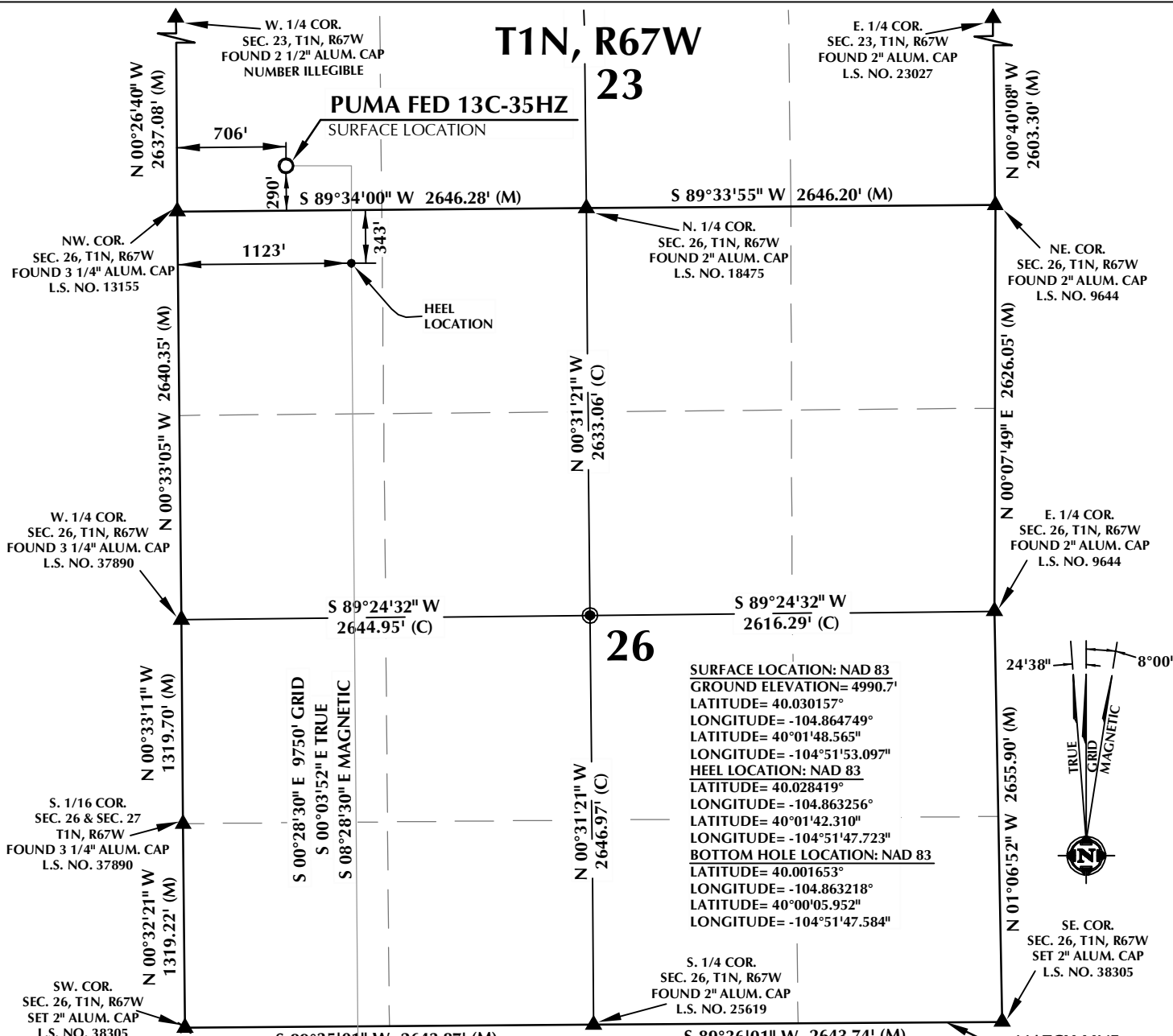


K:\AMDARCO\2015\15_42_FLP_MEISE T1N, R67W_23\PLATS\PUMA\PLATS.dwg, 8/17/2015 4:00:37 PM, lba



T1N, R67W

NW. COR.
SEC. 35, T1N, R67W
SET 2" ALUM. CAP
L.S. NO. 38305

N. 1/4 COR.
SEC. 35, T1N, R67W
FOUND 2" ALUM. CAP
L.S. NO. 25619

MATCH LINE
SEE SHEET 1A

NE. COR.
SEC. 35, T1N, R67W
SET 2" ALUM. CAP
L.S. NO. 38305

SURFACE LOCATION: NAD 83
GROUND ELEVATION= 4990.7'
LATITUDE= 40.030157°
LONGITUDE= -104.864749°
LATITUDE= 40°01'48.565"
LONGITUDE= -104°51'53.097"
HEEL LOCATION: NAD 83
LATITUDE= 40.028419°
LONGITUDE= -104.863256°
LATITUDE= 40°01'42.310"
LONGITUDE= -104°51'47.723"
BOTTOM HOLE LOCATION: NAD 83
LATITUDE= 40.001653°
LONGITUDE= -104.863218°
LATITUDE= 40°00'05.952"
LONGITUDE= -104°51'47.584"

35

W. 1/4 COR.
SEC. 35, T1N, R67W
FOUND 2" ALUM. CAP
L.S. NO. 25937

S 00°28'30" E 9750' GRID
S 00°03'52" E TRUE
S 08°28'30" E MAGNETIC

S 89°35'25" W
1318.63' (M)

S 89°33'40" W
1318.62' (C)

S 89°33'40" W
2638.08' (C)

CW. 1/16 COR.
SEC. 35, T1N, R67W
FOUND 2 1/2" ALUM. CAP
L.S. NO. 24307

N 00°46'33" W 2639.14' (M)

N 00°39'46" W 2638.69' (C)

N 00°32'24" W 5275.85' (M)

BOTTOM OF HOLE:
465' FSL & 1090' FWL

1090'

1543'

227'

465'

S. 1/4 COR.
SEC. 35, T1N, R67W
SET 2" ALUM. CAP
L.S. NO. 38305

SE. COR.
SEC. 35, T1N, R67W
FOUND 2 1/2" ALUM. CAP
L.S. NO. 13482

SW. COR.
SEC. 35, T1N, R67W
FOUND ALUM. CAP
NUMBER ILLEGIBLE

W. 1/16 COR.
SEC. 35, T1N, R67W &
SEC. 2, T1S, R67W
FOUND 3 1/4" ALUM. CAP
L.S. NO. 37890

24'38" 8°00'



CERTIFICATE OF SURVEYOR:

THIS IS TO CERTIFY THAT THE ABOVE PLAT WAS PREPARED FROM FIELD NOTES OF ACTUAL SURVEY MADE BY ME OR UNDER MY SUPERVISION AND THAT THE SAME ARE TRUE AND CORRECT TO THE BEST OF MY KNOWLEDGE AND BELIEF. THIS CERTIFICATE DOES NOT REPRESENT A LAND SURVEY PLAT OR IMPROVEMENT SURVEY PLAT AS DEFINED BY C.S. 38-51-102 AND CANNOT BE RELIED UPON TO DETERMINE OWNERSHIP.

Benjamin J. Reenders
BENJAMIN J. REENDERS
PROFESSIONAL LAND SURVEYOR
COLORADO REGISTRATION NUMBER 18306
8/19/15

NOTICE:
ACCORDING TO COLORADO STATE LAW YOU MUST COMMENCE ANY LEGAL ACTION BASED UPON ANY DEFECT IN THIS SURVEY WITHIN THREE YEARS AFTER YOU FIRST DISCOVER SUCH DEFECT. IN NO EVENT MAY ANY ACTION BASED UPON ANY DEFECT IN THIS SURVEY BE COMMENCED MORE THAN TEN YEARS FROM THE DATE ON THE CERTIFICATION SHOWN HEREON.

NOTES:

- ▲ INDICATES FOUND SECTION CORNER
- INDICATES CALCULATED CORNER
- ELEVATION BASED ON NAVD88 (GEOID09)
- BASIS OF BEARING DERIVED FROM COLORADO COORDINATE SYSTEM 1983 NORTH ZONE UNLESS OTHERWISE NOTED.
- ALL MEASURED DISTANCES ARE GRID.
COMBINED SCALE FACTOR: .99972876
- OPERATOR: ROB WILSON / PDOP = 1.2
- SEE ADDENDUM TO WELL LOCATION CERTIFICATE FOR EXISTING IMPROVEMENTS WITHIN 500' OF THE WELL PAD.
- WELL FOOTAGES ARE MEASURED AT RIGHT ANGLES TO THE SECTION LINES.
- THE BOTTOM OF HOLE BEARS S00°28'30"E, 9750' FROM THE HEEL LOCATION.



NOTE:
SCALE: 1" = 1000'
MAGNETIC NORTH IS CURRENT AS OF 8/11/2015.
MAGNETIC NORTH CHANGES WEST 0°06' PER YEAR.

WELL PAD - PUMA 4C-14HZ

PUMA FED T3C-35HZ
WELL LOCATION CERTIFICATE
290' FSL & 706' FWL SWSW (SURFACE)
LOCATED IN SECTION 23
343' FNL & 1123' FWL NWNW (HEEL)
LOCATED IN SECTION 26
465' FSL & 1090' FWL SWSW (BOTTOM)
LOCATED IN SECTION 35
T1N, R67W, 6TH P.M.
WELD COUNTY, COLORADO

**Kerr-McGee Oil &
Gas Onshore L.P.**
1099 18th Street
Denver, Colorado 80202



CONSULTING, LLC

SHERIDAN OFFICE
1095 Saberton Avenue
Sheridan, Wyoming 82801
Phone 307-674-0609

LOVELAND OFFICE
1635 Foxtrail Drive, Suite 204
Loveland, Colorado 80538
Phone 970-776-4331

DRAFTED BY:	LMO	CHECKED BY:	BJR	SHEET NO:
DATE DRAFTED:	8/19/15	DATE SURVEYED:	5/7/15	1B
REVISED:		FILE NAME:	15-42	1B OF 1