

BONANZA CREEK ENERGY INC.

WELD COUNTY, COLORADO (NAD 83)

SE SW SEC. 21 T5N R62W 6th P.M.

STATE ANTELOPE O34-21-16XRLNB

ORIGINAL WELLBORE

13 October, 2015

Plan: PROPOSAL #2





Project: WELD COUNTY, COLORADO (NAD 83)
Site: SE SW SEC. 21 T5N R62W 6th P.M.
Well: STATE ANTELOPE O34-21-16XRLNB
Wellbore: ORIGINAL WELLBORE
Design: PROPOSAL #2

ANNOTATIONS									
TVD	MD	Inc	Azi	+N/-S	+E/-W	VSect	Dep	Annotation	
1800.0	1800.0	0.00	0.00	0.0	0.0	0.0	0.0	START NUDDGE (2°/100ft BUR)	
3008.3	3047.4	24.95	106.16	-74.4	256.7	-48.1	267.3	EOB TO 24.95° INC	
4549.4	4747.0	24.95	106.16	-274.0	945.3	-177.0	984.2	END OF TANGENT	
5757.7	5994.4	0.00	0.00	-348.4	1202.0	-225.1	1251.5	EOD TO VERTICAL	
5787.7	6024.4	0.00	0.00	-348.4	1202.0	-225.1	1251.5	KOP (12°/100ft BUR)	
6248.9	6649.4	75.00	359.56	5.5	1199.3	126.7	1605.4	START OF TANGENT	
6274.8	6749.4	75.00	359.56	102.1	1198.5	222.7	1702.0	END OF TANGENT	
6291.0	6874.4	90.00	359.56	225.6	1197.6	345.5	1825.5	7" ICP *NEW* (P2) - STATE ANTELOPE O34-21-16XRLNB	
6291.0	11652.2	90.00	359.56	5003.3	1161.1	5095.0	6603.3	MID-POINT - ~2275ft FEL of Sec 16	
6291.0	11731.0	90.00	357.99	5082.1	1159.4	5173.3	6682.1	EOT TO 357.99° AZ	
6291.0	16437.2	90.00	357.99	9785.4	994.2	9835.8	11388.4	BHL (P2) - STATE ANTELOPE O34-21-16XRLNB	

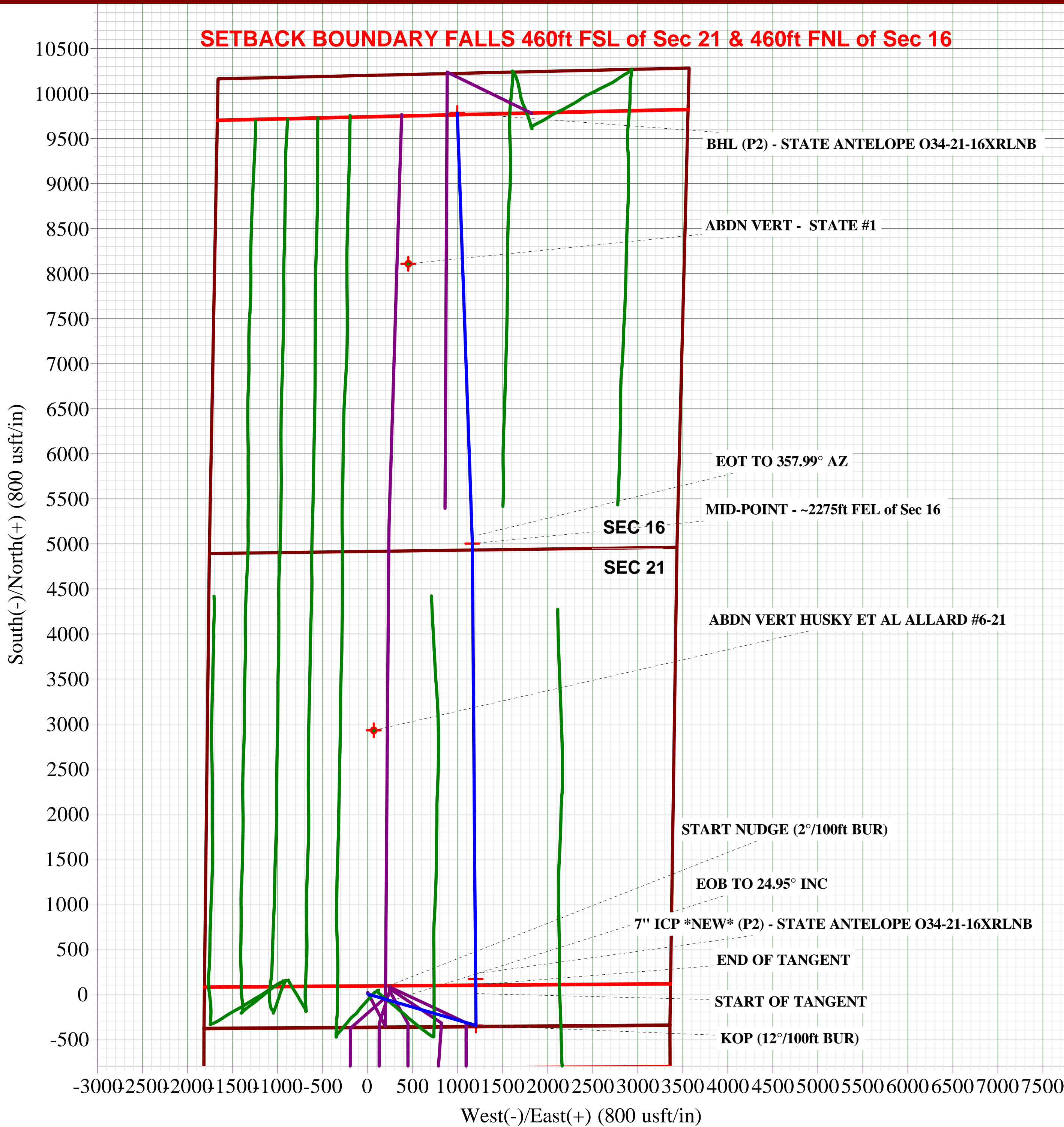
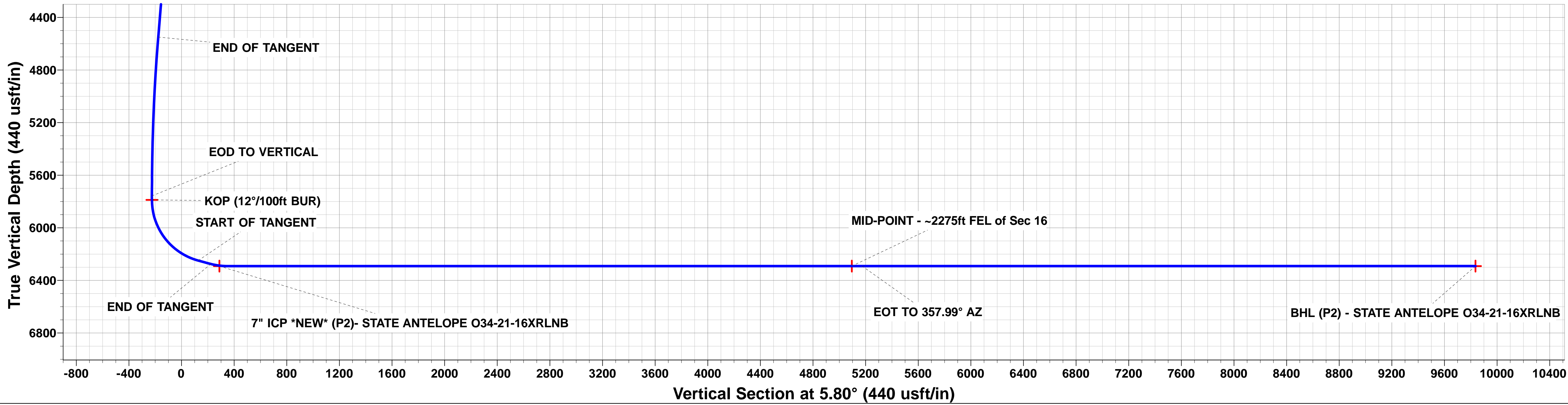
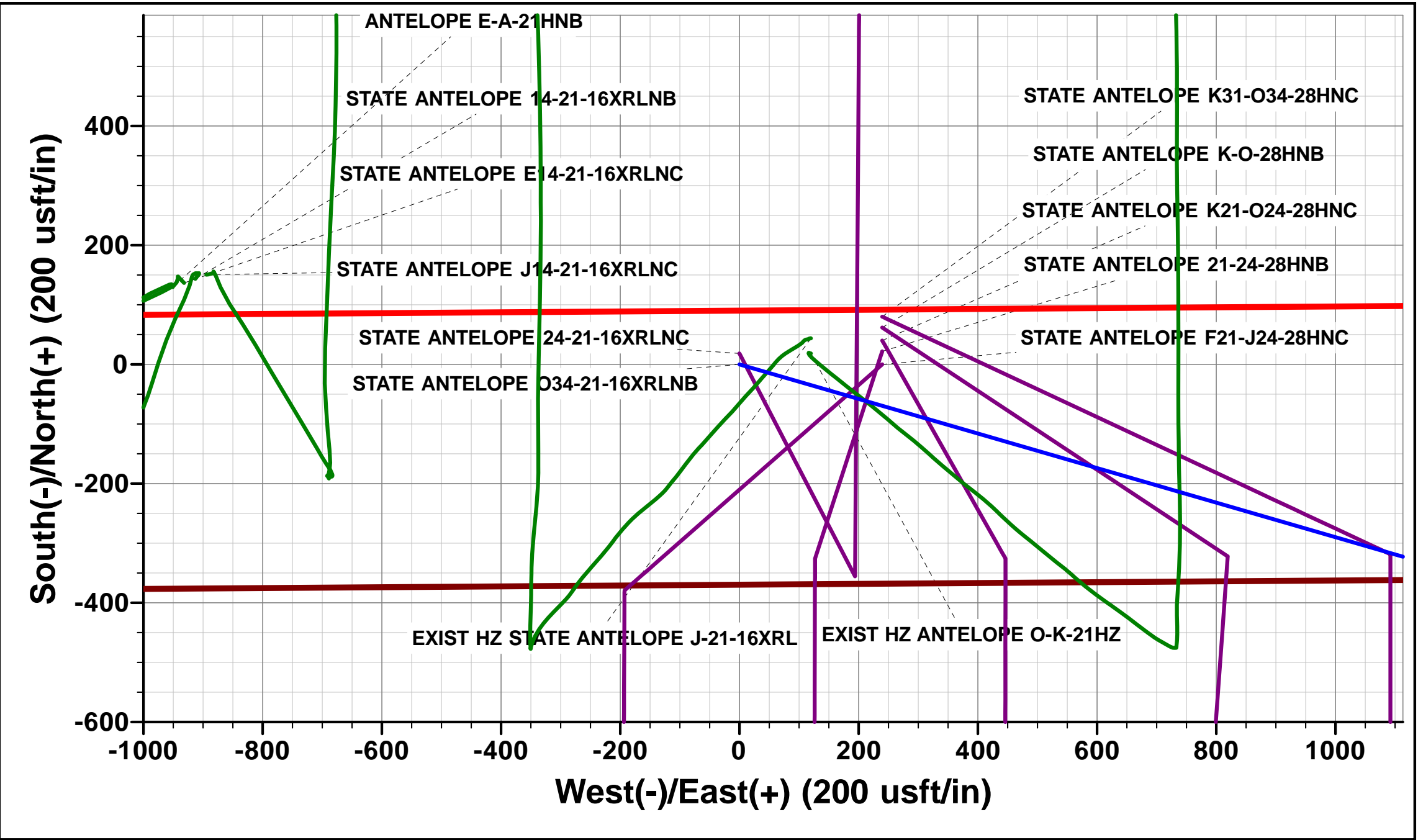
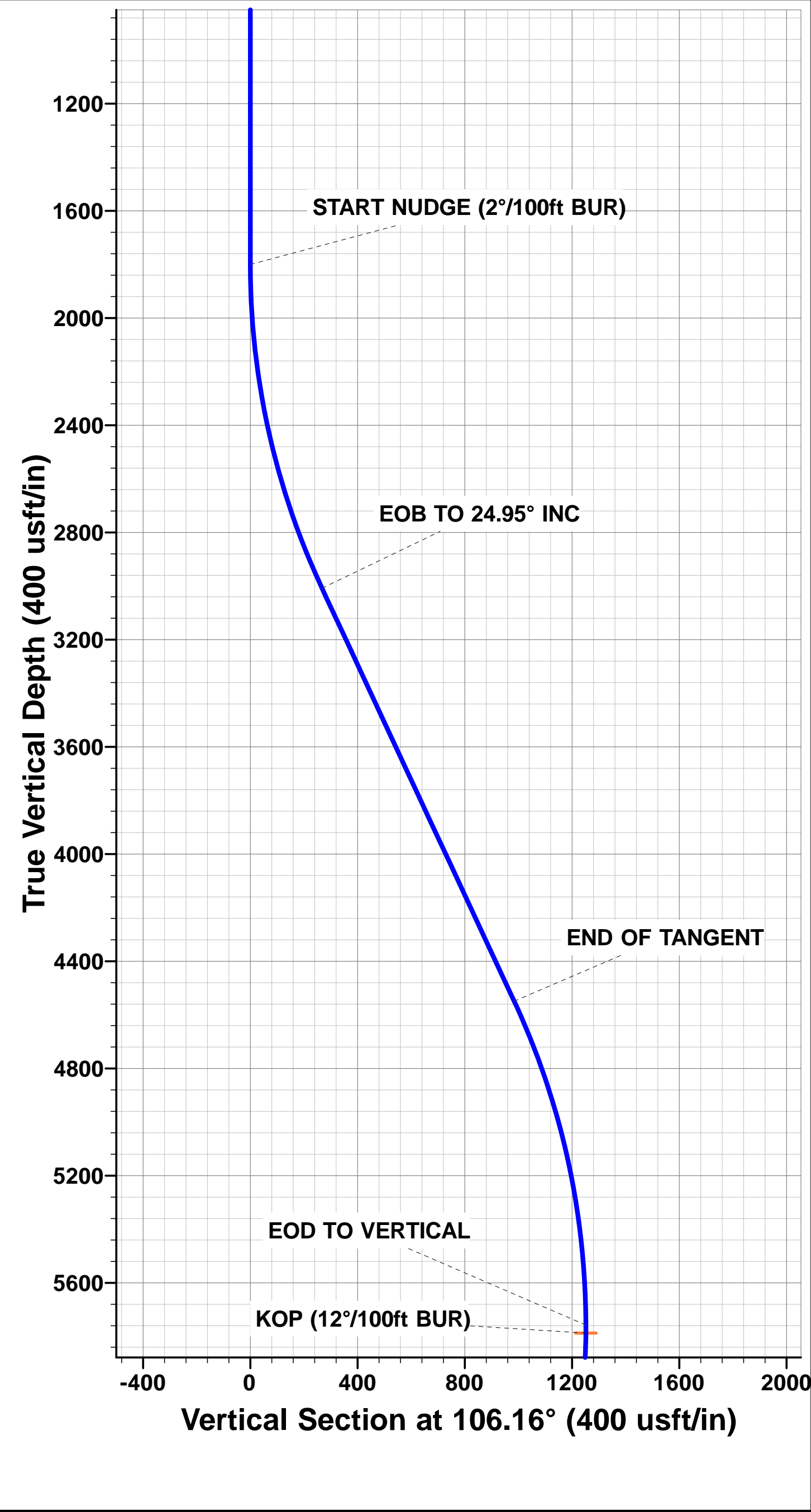
PROPOSED LOCAL COORDINATES:

SHL: 369ft FSL & 1817ft FWL Sec 21

7" ICP *NEW*: 589ft FSL & 2166ft FEL Sec 21

BHL: 470ft FNL & 2564ft FEL Sec 16

WELLBORE TARGET DETAILS (LAT/LONG)					
Name	TVD	+N/-S	+E/-W	Latitude	Longitude
KOP (P2) - STATE ANTELOPE O34-21-16XRLNB	5787.7	-348.4	1202.0	40.378004	-104.327346
7" ICP *NEW* (P2)- STATE ANTELOPE O34-21-16XRLNB	6291.0	167.6	1198.0	40.379420	-104.327360
BHL (P2) - STATE ANTELOPE O34-21-16XRLNB	6291.0	9785.4	994.2	40.405820	-104.328090
MID-PNT (P2) - STATE ANTELOPE O34-21-16XRLNB	6291.0	5003.3	1161.1	40.392694	-104.327492



Database:	EDM 5000.1 Single User Db	Local Co-ordinate Reference:	Well STATE ANTELOPE O34-21-16XRLNB
Company:	BONANZA CREEK ENERGY INC.	TVD Reference:	KB-EST @ 4651.0usft (Original Well Elev)
Project:	WELD COUNTY, COLORADO (NAD 83)	MD Reference:	KB-EST @ 4651.0usft (Original Well Elev)
Site:	SE SW SEC. 21 T5N R62W 6th P.M.	North Reference:	True
Well:	STATE ANTELOPE O34-21-16XRLNB	Survey Calculation Method:	Minimum Curvature
Wellbore:	ORIGINAL WELLBORE		
Design:	PROPOSAL #2		

Project	WELD COUNTY, COLORADO (NAD 83)		
Map System:	US State Plane 1983	System Datum:	Mean Sea Level
Geo Datum:	North American Datum 1983		
Map Zone:	Colorado Northern Zone		Using geodetic scale factor

Site	SE SW SEC. 21 T5N R62W 6th P.M.		
Site Position:		Northing:	1,383,043.02 usft
From:	Lat/Long	Easting:	3,325,725.93 usft
Position Uncertainty:	0.0 usft	Slot Radius:	1.10000ft
		Latitude:	40.378960
		Longitude:	-104.330800
		Grid Convergence:	0.76 °

Well	STATE ANTELOPE O34-21-16XRLNB		
Well Position	+N/-S	0.0 usft	Northing: 1,383,039.86 usft
	+E/-W	-239.6 usft	Easting: 3,325,486.36 usft
Position Uncertainty	0.0 usft	Wellhead Elevation:	usft
		Latitude:	40.378960
		Longitude:	-104.331660
		Ground Level:	4,634.0 usft

Wellbore	ORIGINAL WELLBORE				
Magnetics	Model Name	Sample Date	Declination (°)	Dip Angle (°)	Field Strength (nT)
	IGRF2015	03/07/2015	8.18	66.96	52,652

Design	PROPOSAL #2			
Audit Notes:				
Version:	Phase:	PROTOTYPE	Tie On Depth:	0.0
Vertical Section:	Depth From (TVD) (usft)	+N/-S (usft)	+E/-W (usft)	Direction (°)
	6,291.0	0.0	0.0	5.80

Plan Sections											
MD (usft)	Inc (°)	Azi (°)	Vertical Depth	SS (usft)	+N/-S (usft)	+E/-W (usft)	Dogleg Rate (°/100usft)	Build Rate (°/100usft)	Turn Rate (°/100usft)	TFO (°)	Target
0.0	0.00	0.00	0.0	-4,651.0	0.0	0.0	0.00	0.00	0.00	0.00	
1,800.0	0.00	0.00	1,800.0	-2,851.0	0.0	0.0	0.00	0.00	0.00	0.00	
3,047.4	24.95	106.16	3,008.3	-1,642.7	-74.4	256.7	2.00	2.00	0.00	106.16	
4,747.0	24.95	106.16	4,549.4	-101.6	-274.0	945.3	0.00	0.00	0.00	0.00	
5,994.4	0.00	0.00	5,757.7	1,106.7	-348.4	1,202.0	2.00	-2.00	0.00	180.00	
6,024.4	0.00	0.00	5,787.7	1,136.7	-348.4	1,202.0	0.00	0.00	0.00	0.00	KOP (P2) - STATE
6,649.4	75.00	359.56	6,248.9	1,597.9	5.5	1,199.3	12.00	12.00	0.00	359.56	
6,749.4	75.00	359.56	6,274.8	1,623.8	102.1	1,198.5	0.00	0.00	0.00	0.00	
6,874.4	90.00	359.56	6,291.0	1,640.0	225.6	1,197.6	12.00	12.00	0.00	0.00	
11,652.2	90.00	359.56	6,291.0	1,640.0	5,003.3	1,161.1	0.00	0.00	0.00	76.78	MID-PNT (P2) - ST.
11,731.0	90.00	357.99	6,291.0	1,640.0	5,082.1	1,159.4	2.00	0.00	-2.00	-90.04	
16,437.2	90.00	357.99	6,291.0	1,640.0	9,785.4	994.2	0.00	0.00	0.00	0.00	BHL (P2) - STATE ,

Database:	EDM 5000.1 Single User Db	Local Co-ordinate Reference:	Well STATE ANTELOPE O34-21-16XRLNB
Company:	BONANZA CREEK ENERGY INC.	TVD Reference:	KB-EST @ 4651.0usft (Original Well Elev)
Project:	WELD COUNTY, COLORADO (NAD 83)	MD Reference:	KB-EST @ 4651.0usft (Original Well Elev)
Site:	SE SW SEC. 21 T5N R62W 6th P.M.	North Reference:	True
Well:	STATE ANTELOPE O34-21-16XRLNB	Survey Calculation Method:	Minimum Curvature
Wellbore:	ORIGINAL WELLBORE		
Design:	PROPOSAL #2		

Planned Survey

MD (usft)	Inc (°)	Azi (°)	TVD (usft)	SS (usft)	+N/-S (usft)	+E/-W (usft)	Vertical Section (usft)	Dogleg Rate (°/100usft)	Build Rate (°/100usft)	Turn Rate (°/100usft)
0.0	0.00	0.00	0.0	4,651.00	0.0	0.0	0.0	0.00	0.00	0.00
100.0	0.00	0.00	100.0	4,551.00	0.0	0.0	0.0	0.00	0.00	0.00
200.0	0.00	0.00	200.0	4,451.00	0.0	0.0	0.0	0.00	0.00	0.00
300.0	0.00	0.00	300.0	4,351.00	0.0	0.0	0.0	0.00	0.00	0.00
400.0	0.00	0.00	400.0	4,251.00	0.0	0.0	0.0	0.00	0.00	0.00
500.0	0.00	0.00	500.0	4,151.00	0.0	0.0	0.0	0.00	0.00	0.00
600.0	0.00	0.00	600.0	4,051.00	0.0	0.0	0.0	0.00	0.00	0.00
700.0	0.00	0.00	700.0	3,951.00	0.0	0.0	0.0	0.00	0.00	0.00
800.0	0.00	0.00	800.0	3,851.00	0.0	0.0	0.0	0.00	0.00	0.00
900.0	0.00	0.00	900.0	3,751.00	0.0	0.0	0.0	0.00	0.00	0.00
1,000.0	0.00	0.00	1,000.0	3,651.00	0.0	0.0	0.0	0.00	0.00	0.00
1,100.0	0.00	0.00	1,100.0	3,551.00	0.0	0.0	0.0	0.00	0.00	0.00
1,200.0	0.00	0.00	1,200.0	3,451.00	0.0	0.0	0.0	0.00	0.00	0.00
1,300.0	0.00	0.00	1,300.0	3,351.00	0.0	0.0	0.0	0.00	0.00	0.00
1,400.0	0.00	0.00	1,400.0	3,251.00	0.0	0.0	0.0	0.00	0.00	0.00
1,500.0	0.00	0.00	1,500.0	3,151.00	0.0	0.0	0.0	0.00	0.00	0.00
1,600.0	0.00	0.00	1,600.0	3,051.00	0.0	0.0	0.0	0.00	0.00	0.00
1,700.0	0.00	0.00	1,700.0	2,951.00	0.0	0.0	0.0	0.00	0.00	0.00
START NUDGE (2°/100ft BUR)										
1,800.0	0.00	0.00	1,800.0	2,851.00	0.0	0.0	0.0	0.00	0.00	0.00
1,900.0	2.00	106.16	1,900.0	2,751.02	-0.5	1.7	-0.3	2.00	2.00	0.00
2,000.0	4.00	106.16	1,999.8	2,651.16	-1.9	6.7	-1.3	2.00	2.00	0.00
2,100.0	6.00	106.16	2,099.5	2,551.55	-4.4	15.1	-2.8	2.00	2.00	0.00
2,200.0	8.00	106.16	2,198.7	2,452.30	-7.8	26.8	-5.0	2.00	2.00	0.00
2,300.0	10.00	106.16	2,297.5	2,353.53	-12.1	41.8	-7.8	2.00	2.00	0.00
2,400.0	12.00	106.16	2,395.6	2,255.38	-17.4	60.1	-11.3	2.00	2.00	0.00
2,500.0	14.00	106.16	2,493.1	2,157.94	-23.7	81.7	-15.3	2.00	2.00	0.00
2,600.0	16.00	106.16	2,589.6	2,061.36	-30.9	106.6	-20.0	2.00	2.00	0.00
2,700.0	18.00	106.16	2,685.3	1,965.73	-39.0	134.7	-25.2	2.00	2.00	0.00
2,800.0	20.00	106.16	2,779.8	1,871.18	-48.1	165.9	-31.1	2.00	2.00	0.00
2,900.0	22.00	106.16	2,873.2	1,777.83	-58.1	200.4	-37.5	2.00	2.00	0.00
3,000.0	24.00	106.16	2,965.2	1,685.79	-69.0	237.9	-44.6	2.00	2.00	0.00
EOB TO 24.95° INC										
3,047.4	24.95	106.16	3,008.3	1,642.67	-74.4	256.7	-48.1	2.00	2.00	0.00
3,100.0	24.95	106.16	3,056.0	1,594.95	-80.6	278.1	-52.1	0.00	0.00	0.00
3,200.0	24.95	106.16	3,146.7	1,504.28	-92.3	318.6	-59.7	0.00	0.00	0.00
3,300.0	24.95	106.16	3,237.4	1,413.61	-104.1	359.1	-67.2	0.00	0.00	0.00
3,400.0	24.95	106.16	3,328.1	1,322.94	-115.8	399.6	-74.8	0.00	0.00	0.00
3,500.0	24.95	106.16	3,418.7	1,232.27	-127.6	440.1	-82.4	0.00	0.00	0.00
3,600.0	24.95	106.16	3,509.4	1,141.60	-139.3	480.6	-90.0	0.00	0.00	0.00
3,700.0	24.95	106.16	3,600.1	1,050.94	-151.0	521.1	-97.6	0.00	0.00	0.00
3,800.0	24.95	106.16	3,690.7	960.27	-162.8	561.6	-105.2	0.00	0.00	0.00
3,900.0	24.95	106.16	3,781.4	869.60	-174.5	602.1	-112.8	0.00	0.00	0.00
4,000.0	24.95	106.16	3,872.1	778.93	-186.3	642.7	-120.4	0.00	0.00	0.00
4,100.0	24.95	106.16	3,962.7	688.26	-198.0	683.2	-127.9	0.00	0.00	0.00
4,200.0	24.95	106.16	4,053.4	597.59	-209.8	723.7	-135.5	0.00	0.00	0.00
4,300.0	24.95	106.16	4,144.1	506.92	-221.5	764.2	-143.1	0.00	0.00	0.00
4,400.0	24.95	106.16	4,234.8	416.25	-233.2	804.7	-150.7	0.00	0.00	0.00
4,500.0	24.95	106.16	4,325.4	325.58	-245.0	845.2	-158.3	0.00	0.00	0.00
4,600.0	24.95	106.16	4,416.1	234.91	-256.7	885.7	-165.9	0.00	0.00	0.00
4,700.0	24.95	106.16	4,506.8	144.24	-268.5	926.2	-173.5	0.00	0.00	0.00
END OF TANGENT										
4,747.0	24.95	106.16	4,549.4	101.63	-274.0	945.3	-177.0	0.00	0.00	0.00

Database:	EDM 5000.1 Single User Db	Local Co-ordinate Reference:	Well STATE ANTELOPE O34-21-16XRLNB
Company:	BONANZA CREEK ENERGY INC.	TVD Reference:	KB-EST @ 4651.0usft (Original Well Elev)
Project:	WELD COUNTY, COLORADO (NAD 83)	MD Reference:	KB-EST @ 4651.0usft (Original Well Elev)
Site:	SE SW SEC. 21 T5N R62W 6th P.M.	North Reference:	True
Well:	STATE ANTELOPE O34-21-16XRLNB	Survey Calculation Method:	Minimum Curvature
Wellbore:	ORIGINAL WELLBORE		
Design:	PROPOSAL #2		

Planned Survey

MD (usft)	Inc (°)	Azi (°)	TVD (usft)	SS (usft)	+N/-S (usft)	+E/-W (usft)	Vertical Section (usft)	Dogleg Rate (°/100usft)	Build Rate (°/100usft)	Turn Rate (°/100usft)
4,800.0	23.89	106.16	4,597.6	53.37	-280.1	966.3	-181.0	2.00	-2.00	0.00
4,900.0	21.89	106.16	4,689.8	-38.76	-290.9	1,003.7	-188.0	2.00	-2.00	0.00
5,000.0	19.89	106.16	4,783.2	-132.18	-300.8	1,037.9	-194.4	2.00	-2.00	0.00
5,100.0	17.89	106.16	4,877.8	-226.79	-309.8	1,069.0	-200.2	2.00	-2.00	0.00
5,200.0	15.89	106.16	4,973.5	-322.47	-317.9	1,096.9	-205.4	2.00	-2.00	0.00
5,300.0	13.89	106.16	5,070.1	-419.11	-325.1	1,121.6	-210.1	2.00	-2.00	0.00
5,400.0	11.89	106.16	5,167.6	-516.59	-331.3	1,143.0	-214.1	2.00	-2.00	0.00
5,500.0	9.89	106.16	5,265.8	-614.78	-336.6	1,161.1	-217.5	2.00	-2.00	0.00
5,600.0	7.89	106.16	5,364.6	-713.58	-340.9	1,176.0	-220.2	2.00	-2.00	0.00
5,700.0	5.89	106.16	5,463.9	-812.85	-344.2	1,187.5	-222.4	2.00	-2.00	0.00
5,800.0	3.89	106.16	5,563.5	-912.48	-346.6	1,195.7	-223.9	2.00	-2.00	0.00
5,900.0	1.89	106.16	5,663.4	-1,012.35	-348.0	1,200.5	-224.8	2.00	-2.00	0.00
EOD TO VERTICAL										
5,994.4	0.00	0.00	5,757.7	-1,106.70	-348.4	1,202.0	-225.1	2.00	-2.00	0.00
6,000.0	0.00	0.00	5,763.3	-1,112.33	-348.4	1,202.0	-225.1	0.00	0.00	0.00
KOP (12°/100ft BUR)										
6,024.4	0.00	0.00	5,787.7	-1,136.70	-348.4	1,202.0	-225.1	0.00	0.00	0.00
6,100.0	9.08	359.56	5,863.0	-1,212.02	-342.4	1,202.0	-219.2	12.00	12.00	0.00
6,200.0	21.08	359.56	5,959.4	-1,308.40	-316.5	1,201.8	-193.4	12.00	12.00	0.00
6,300.0	33.08	359.56	6,048.3	-1,397.28	-271.0	1,201.4	-148.2	12.00	12.00	0.00
6,400.0	45.08	359.56	6,125.8	-1,474.77	-208.1	1,200.9	-85.7	12.00	12.00	0.00
6,500.0	57.08	359.56	6,188.5	-1,537.48	-130.5	1,200.3	-8.5	12.00	12.00	0.00
6,600.0	69.08	359.56	6,233.7	-1,582.68	-41.5	1,199.6	80.0	12.00	12.00	0.00
START OF TANGENT										
6,649.4	75.00	359.56	6,248.9	-1,597.90	5.5	1,199.3	126.7	12.00	12.00	0.00
6,700.0	75.00	359.56	6,262.0	-1,611.00	54.4	1,198.9	175.3	0.00	0.00	0.00
END OF TANGENT										
6,749.4	75.00	359.56	6,274.8	-1,623.78	102.1	1,198.5	222.7	0.00	0.00	0.00
6,800.0	81.08	359.56	6,285.3	-1,634.27	151.6	1,198.2	271.9	12.00	12.00	0.00
7" ICP *NEW* (P2) - STATE ANTELOPE O34-21-16XRLNB										
6,874.4	90.00	359.56	6,291.0	-1,640.05	225.6	1,197.6	345.5	12.00	12.00	0.00
6,900.0	90.00	359.56	6,291.0	-1,640.05	251.3	1,197.4	371.0	0.00	0.00	0.00
7,000.0	90.00	359.56	6,291.0	-1,640.05	351.3	1,196.6	470.4	0.00	0.00	0.00
7,100.0	90.00	359.56	6,291.0	-1,640.05	451.3	1,195.9	569.8	0.00	0.00	0.00
7,200.0	90.00	359.56	6,291.0	-1,640.05	551.3	1,195.1	669.2	0.00	0.00	0.00
7,300.0	90.00	359.56	6,291.0	-1,640.05	651.3	1,194.3	768.7	0.00	0.00	0.00
7,400.0	90.00	359.56	6,291.0	-1,640.05	751.3	1,193.6	868.1	0.00	0.00	0.00
7,500.0	90.00	359.56	6,291.0	-1,640.05	851.3	1,192.8	967.5	0.00	0.00	0.00
7,600.0	90.00	359.56	6,291.0	-1,640.05	951.3	1,192.0	1,066.9	0.00	0.00	0.00
7,700.0	90.00	359.56	6,291.0	-1,640.05	1,051.2	1,191.3	1,166.3	0.00	0.00	0.00
7,800.0	90.00	359.56	6,291.0	-1,640.04	1,151.2	1,190.5	1,265.7	0.00	0.00	0.00
7,900.0	90.00	359.56	6,291.0	-1,640.04	1,251.2	1,189.7	1,365.1	0.00	0.00	0.00
8,000.0	90.00	359.56	6,291.0	-1,640.04	1,351.2	1,189.0	1,464.5	0.00	0.00	0.00
8,100.0	90.00	359.56	6,291.0	-1,640.04	1,451.2	1,188.2	1,563.9	0.00	0.00	0.00
8,200.0	90.00	359.56	6,291.0	-1,640.04	1,551.2	1,187.4	1,663.3	0.00	0.00	0.00
8,300.0	90.00	359.56	6,291.0	-1,640.04	1,651.2	1,186.7	1,762.7	0.00	0.00	0.00
8,400.0	90.00	359.56	6,291.0	-1,640.04	1,751.2	1,185.9	1,862.1	0.00	0.00	0.00
8,500.0	90.00	359.56	6,291.0	-1,640.04	1,851.2	1,185.1	1,961.5	0.00	0.00	0.00
8,600.0	90.00	359.56	6,291.0	-1,640.04	1,951.2	1,184.4	2,060.9	0.00	0.00	0.00
8,700.0	90.00	359.56	6,291.0	-1,640.04	2,051.2	1,183.6	2,160.4	0.00	0.00	0.00
8,800.0	90.00	359.56	6,291.0	-1,640.04	2,151.2	1,182.8	2,259.8	0.00	0.00	0.00
8,900.0	90.00	359.56	6,291.0	-1,640.04	2,251.2	1,182.1	2,359.2	0.00	0.00	0.00
9,000.0	90.00	359.56	6,291.0	-1,640.04	2,351.2	1,181.3	2,458.6	0.00	0.00	0.00
9,100.0	90.00	359.56	6,291.0	-1,640.04	2,451.2	1,180.5	2,558.0	0.00	0.00	0.00

Database:	EDM 5000.1 Single User Db	Local Co-ordinate Reference:	Well STATE ANTELOPE O34-21-16XRLNB
Company:	BONANZA CREEK ENERGY INC.	TVD Reference:	KB-EST @ 4651.0usft (Original Well Elev)
Project:	WELD COUNTY, COLORADO (NAD 83)	MD Reference:	KB-EST @ 4651.0usft (Original Well Elev)
Site:	SE SW SEC. 21 T5N R62W 6th P.M.	North Reference:	True
Well:	STATE ANTELOPE O34-21-16XRLNB	Survey Calculation Method:	Minimum Curvature
Wellbore:	ORIGINAL WELLBORE		
Design:	PROPOSAL #2		

Planned Survey

MD (usft)	Inc (°)	Azi (°)	TVD (usft)	SS (usft)	+N/-S (usft)	+E/-W (usft)	Vertical Section (usft)	Dogleg Rate (°/100usft)	Build Rate (°/100usft)	Turn Rate (°/100usft)
9,200.0	90.00	359.56	6,291.0	-1,640.04	2,551.2	1,179.8	2,657.4	0.00	0.00	0.00
9,300.0	90.00	359.56	6,291.0	-1,640.03	2,651.2	1,179.0	2,756.8	0.00	0.00	0.00
9,400.0	90.00	359.56	6,291.0	-1,640.03	2,751.2	1,178.3	2,856.2	0.00	0.00	0.00
9,500.0	90.00	359.56	6,291.0	-1,640.03	2,851.2	1,177.5	2,955.6	0.00	0.00	0.00
9,600.0	90.00	359.56	6,291.0	-1,640.03	2,951.2	1,176.7	3,055.0	0.00	0.00	0.00
9,700.0	90.00	359.56	6,291.0	-1,640.03	3,051.2	1,176.0	3,154.4	0.00	0.00	0.00
9,800.0	90.00	359.56	6,291.0	-1,640.03	3,151.2	1,175.2	3,253.8	0.00	0.00	0.00
9,900.0	90.00	359.56	6,291.0	-1,640.03	3,251.2	1,174.4	3,353.2	0.00	0.00	0.00
10,000.0	90.00	359.56	6,291.0	-1,640.03	3,351.2	1,173.7	3,452.7	0.00	0.00	0.00
10,100.0	90.00	359.56	6,291.0	-1,640.03	3,451.2	1,172.9	3,552.1	0.00	0.00	0.00
10,200.0	90.00	359.56	6,291.0	-1,640.02	3,551.2	1,172.1	3,651.5	0.00	0.00	0.00
10,300.0	90.00	359.56	6,291.0	-1,640.02	3,651.2	1,171.4	3,750.9	0.00	0.00	0.00
10,400.0	90.00	359.56	6,291.0	-1,640.02	3,751.2	1,170.6	3,850.3	0.00	0.00	0.00
10,500.0	90.00	359.56	6,291.0	-1,640.02	3,851.2	1,169.9	3,949.7	0.00	0.00	0.00
10,600.0	90.00	359.56	6,291.0	-1,640.02	3,951.2	1,169.1	4,049.1	0.00	0.00	0.00
10,700.0	90.00	359.56	6,291.0	-1,640.02	4,051.2	1,168.3	4,148.5	0.00	0.00	0.00
10,800.0	90.00	359.56	6,291.0	-1,640.02	4,151.2	1,167.6	4,247.9	0.00	0.00	0.00
10,900.0	90.00	359.56	6,291.0	-1,640.01	4,251.2	1,166.8	4,347.3	0.00	0.00	0.00
11,000.0	90.00	359.56	6,291.0	-1,640.01	4,351.2	1,166.1	4,446.7	0.00	0.00	0.00
11,100.0	90.00	359.56	6,291.0	-1,640.01	4,451.2	1,165.3	4,546.1	0.00	0.00	0.00
11,200.0	90.00	359.56	6,291.0	-1,640.01	4,551.1	1,164.5	4,645.6	0.00	0.00	0.00
11,300.0	90.00	359.56	6,291.0	-1,640.01	4,651.1	1,163.8	4,745.0	0.00	0.00	0.00
11,400.0	90.00	359.56	6,291.0	-1,640.00	4,751.1	1,163.0	4,844.4	0.00	0.00	0.00
11,500.0	90.00	359.56	6,291.0	-1,640.00	4,851.1	1,162.3	4,943.8	0.00	0.00	0.00
11,600.0	90.00	359.56	6,291.0	-1,640.00	4,951.1	1,161.5	5,043.2	0.00	0.00	0.00
MID-POINT - ~2275ft FEL of Sec 16										
11,652.2	90.00	359.56	6,291.0	-1,640.00	5,003.3	1,161.1	5,095.0	0.00	0.00	0.00
11,700.0	90.00	358.61	6,291.0	-1,640.00	5,051.1	1,160.3	5,142.5	2.00	0.00	-2.00
EOT TO 357.99° AZ										
11,731.0	90.00	357.99	6,291.0	-1,640.00	5,082.1	1,159.4	5,173.3	2.00	0.00	-2.00
11,800.0	90.00	357.99	6,291.0	-1,640.00	5,151.1	1,157.0	5,241.6	0.00	0.00	0.00
11,900.0	90.00	357.99	6,291.0	-1,640.00	5,251.0	1,153.5	5,340.7	0.00	0.00	0.00
12,000.0	90.00	357.99	6,291.0	-1,640.00	5,350.9	1,150.0	5,439.8	0.00	0.00	0.00
12,100.0	90.00	357.99	6,291.0	-1,640.00	5,450.9	1,146.5	5,538.9	0.00	0.00	0.00
12,200.0	90.00	357.99	6,291.0	-1,640.00	5,550.8	1,143.0	5,637.9	0.00	0.00	0.00
12,300.0	90.00	357.99	6,291.0	-1,640.00	5,650.8	1,139.4	5,737.0	0.00	0.00	0.00
12,400.0	90.00	357.99	6,291.0	-1,640.00	5,750.7	1,135.9	5,836.1	0.00	0.00	0.00
12,500.0	90.00	357.99	6,291.0	-1,640.00	5,850.6	1,132.4	5,935.1	0.00	0.00	0.00
12,600.0	90.00	357.99	6,291.0	-1,640.00	5,950.6	1,128.9	6,034.2	0.00	0.00	0.00
12,700.0	90.00	357.99	6,291.0	-1,640.00	6,050.5	1,125.4	6,133.3	0.00	0.00	0.00
12,800.0	90.00	357.99	6,291.0	-1,640.00	6,150.5	1,121.9	6,232.4	0.00	0.00	0.00
12,900.0	90.00	357.99	6,291.0	-1,640.00	6,250.4	1,118.4	6,331.4	0.00	0.00	0.00
13,000.0	90.00	357.99	6,291.0	-1,640.00	6,350.3	1,114.9	6,430.5	0.00	0.00	0.00
13,100.0	90.00	357.99	6,291.0	-1,640.00	6,450.3	1,111.4	6,529.6	0.00	0.00	0.00
13,200.0	90.00	357.99	6,291.0	-1,640.00	6,550.2	1,107.9	6,628.6	0.00	0.00	0.00
13,300.0	90.00	357.99	6,291.0	-1,640.00	6,650.1	1,104.3	6,727.7	0.00	0.00	0.00
13,400.0	90.00	357.99	6,291.0	-1,640.00	6,750.1	1,100.8	6,826.8	0.00	0.00	0.00
13,500.0	90.00	357.99	6,291.0	-1,640.00	6,850.0	1,097.3	6,925.9	0.00	0.00	0.00
13,600.0	90.00	357.99	6,291.0	-1,640.00	6,950.0	1,093.8	7,024.9	0.00	0.00	0.00
13,700.0	90.00	357.99	6,291.0	-1,640.00	7,049.9	1,090.3	7,124.0	0.00	0.00	0.00
13,800.0	90.00	357.99	6,291.0	-1,640.00	7,149.8	1,086.8	7,223.1	0.00	0.00	0.00
13,900.0	90.00	357.99	6,291.0	-1,640.00	7,249.8	1,083.3	7,322.1	0.00	0.00	0.00
14,000.0	90.00	357.99	6,291.0	-1,640.00	7,349.7	1,079.8	7,421.2	0.00	0.00	0.00

Database:	EDM 5000.1 Single User Db	Local Co-ordinate Reference:	Well STATE ANTELOPE O34-21-16XRLNB
Company:	BONANZA CREEK ENERGY INC.	TVD Reference:	KB-EST @ 4651.0usft (Original Well Elev)
Project:	WELD COUNTY, COLORADO (NAD 83)	MD Reference:	KB-EST @ 4651.0usft (Original Well Elev)
Site:	SE SW SEC. 21 T5N R62W 6th P.M.	North Reference:	True
Well:	STATE ANTELOPE O34-21-16XRLNB	Survey Calculation Method:	Minimum Curvature
Wellbore:	ORIGINAL WELLBORE		
Design:	PROPOSAL #2		

Planned Survey

MD (usft)	Inc (°)	Azi (°)	TVD (usft)	SS (usft)	+N/-S (usft)	+E/-W (usft)	Vertical Section (usft)	Dogleg Rate (°/100usft)	Build Rate (°/100usft)	Turn Rate (°/100usft)
14,100.0	90.00	357.99	6,291.0	-1,640.00	7,449.7	1,076.3	7,520.3	0.00	0.00	0.00
14,200.0	90.00	357.99	6,291.0	-1,640.00	7,549.6	1,072.8	7,619.4	0.00	0.00	0.00
14,300.0	90.00	357.99	6,291.0	-1,640.00	7,649.5	1,069.2	7,718.4	0.00	0.00	0.00
14,400.0	90.00	357.99	6,291.0	-1,640.00	7,749.5	1,065.7	7,817.5	0.00	0.00	0.00
14,500.0	90.00	357.99	6,291.0	-1,640.00	7,849.4	1,062.2	7,916.6	0.00	0.00	0.00
14,600.0	90.00	357.99	6,291.0	-1,640.00	7,949.3	1,058.7	8,015.6	0.00	0.00	0.00
14,700.0	90.00	357.99	6,291.0	-1,640.00	8,049.3	1,055.2	8,114.7	0.00	0.00	0.00
14,800.0	90.00	357.99	6,291.0	-1,640.00	8,149.2	1,051.7	8,213.8	0.00	0.00	0.00
14,900.0	90.00	357.99	6,291.0	-1,640.00	8,249.2	1,048.2	8,312.9	0.00	0.00	0.00
15,000.0	90.00	357.99	6,291.0	-1,640.00	8,349.1	1,044.7	8,411.9	0.00	0.00	0.00
15,100.0	90.00	357.99	6,291.0	-1,640.00	8,449.0	1,041.2	8,511.0	0.00	0.00	0.00
15,200.0	90.00	357.99	6,291.0	-1,640.00	8,549.0	1,037.7	8,610.1	0.00	0.00	0.00
15,300.0	90.00	357.99	6,291.0	-1,640.00	8,648.9	1,034.2	8,709.2	0.00	0.00	0.00
15,400.0	90.00	357.99	6,291.0	-1,640.00	8,748.9	1,030.6	8,808.2	0.00	0.00	0.00
15,500.0	90.00	357.99	6,291.0	-1,640.00	8,848.8	1,027.1	8,907.3	0.00	0.00	0.00
15,600.0	90.00	357.99	6,291.0	-1,640.00	8,948.7	1,023.6	9,006.4	0.00	0.00	0.00
15,700.0	90.00	357.99	6,291.0	-1,640.00	9,048.7	1,020.1	9,105.4	0.00	0.00	0.00
15,800.0	90.00	357.99	6,291.0	-1,640.00	9,148.6	1,016.6	9,204.5	0.00	0.00	0.00
15,900.0	90.00	357.99	6,291.0	-1,640.00	9,248.5	1,013.1	9,303.6	0.00	0.00	0.00
16,000.0	90.00	357.99	6,291.0	-1,640.00	9,348.5	1,009.6	9,402.7	0.00	0.00	0.00
16,100.0	90.00	357.99	6,291.0	-1,640.00	9,448.4	1,006.1	9,501.7	0.00	0.00	0.00
16,200.0	90.00	357.99	6,291.0	-1,640.00	9,548.4	1,002.6	9,600.8	0.00	0.00	0.00
16,300.0	90.00	357.99	6,291.0	-1,640.00	9,648.3	999.1	9,699.9	0.00	0.00	0.00
16,400.0	90.00	357.99	6,291.0	-1,640.00	9,748.2	995.5	9,798.9	0.00	0.00	0.00
BHL (P2) - STATE ANTELOPE O34-21-16XRLNB										
16,437.2	90.00	357.99	6,291.0	-1,640.00	9,785.4	994.2	9,835.8	0.00	0.00	0.00

Plan Annotations

MD (usft)	TVD (usft)	Local Coordinates		Comment
		+N/-S (usft)	+E/-W (usft)	
1,800.0	1,800.0	0.0	0.0	START NUDGE (2°/100ft BUR)
3,047.4	3,008.3	-74.4	256.7	EOB TO 24.95° INC
4,747.0	4,549.4	-274.0	945.3	END OF TANGENT
5,994.4	5,757.7	-348.4	1,202.0	EOD TO VERTICAL
6,024.4	5,787.7	-348.4	1,202.0	KOP (12°/100ft BUR)
6,649.4	6,248.9	5.5	1,199.3	START OF TANGENT
6,749.4	6,274.8	102.1	1,198.5	END OF TANGENT
6,874.4	6,291.0	225.6	1,197.6	7" ICP *NEW* (P2) - STATE ANTELOPE O34-21-16XRLNB
11,652.2	6,291.0	5,003.3	1,161.1	MID-POINT - ~2275ft FEL of Sec 16
11,731.0	6,291.0	5,082.1	1,159.4	EOT TO 357.99° AZ
16,437.2	6,291.0	9,785.4	994.2	BHL (P2) - STATE ANTELOPE O34-21-16XRLNB