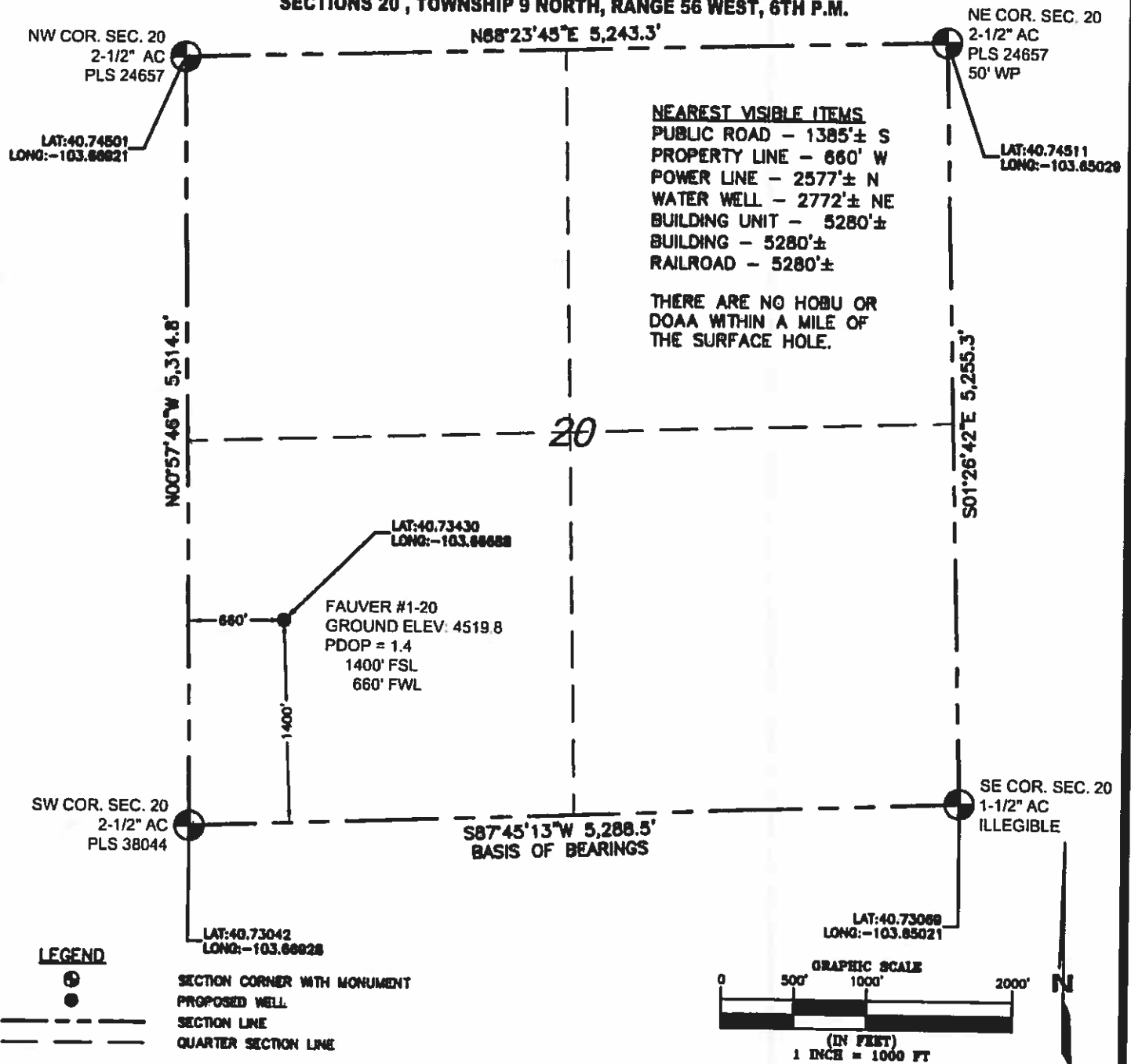
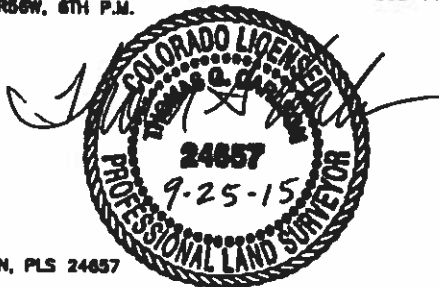


WELL LOCATION CERTIFICATE

SECTIONS 20, TOWNSHIP 9 NORTH, RANGE 56 WEST, 6TH P.M.



I HEREBY STATE TO NEWPEX, LLC THAT THE SURFACE LOCATION FOR THE PROPOSED WELL FAUVER #1-20 IS LOCATED 1400' FSL AND 660' FWL, SECTION 20, T9N, R56W, 6TH P.M.



NOTES:

1. THIS A VERTICAL DRILLED WELL.
2. SEE LOCATION DRAWING FOR IMPROVEMENTS
3. ELEVATION SOURCE: USGS QUAD MAP CONTOURS, 7.5 MINUTE SERIES, NQVD 1929 DATUM.
4. SECTION DIMENSIONS SHOWN ARE FIELD MEASURED. EXTERIOR SECTION LINES ARE DRAWN TO SCALE. DISTANCES TO WELL LOCATION ARE PERPENDICULAR TO SECTION LINES.
5. THIS IS NOT A MONUMENTED BOUNDARY. THIS IS INTENDED ONLY TO DEPICT THE PROPOSED WELL LOCATION AND SECTION LINES.



SURVEYING AND MAPPING LLC (SAM)
 555 Zang St., Suite 210
 Lakewood CO 80228
 Ph: (303) 988-5852
 Fax: (303) 988-2195
 EMAIL: SAM@SAM.BIZ

FAUVER #1-20 (VERTICAL)

LOCATION:

SEC. 20, T9N, R56W, 6TH P.M.
 WELD COUNTY, COLORADO

DRAWN BY:
 JAH

CHECKED BY:
 T. CARLSON

SHEET No.
 1 OF 1

THOMAS G. CARLSON, PLS 24657
 SAM, LLC

FIELD DATE
 09/16/15

EXHIBIT DATE
 09/22/2015

SCALE:
 1" = 1000'

PROJ. No.
 35209

Dwg. No.
 FAUVER #1-20 WELL CERTIFICATE.dwg