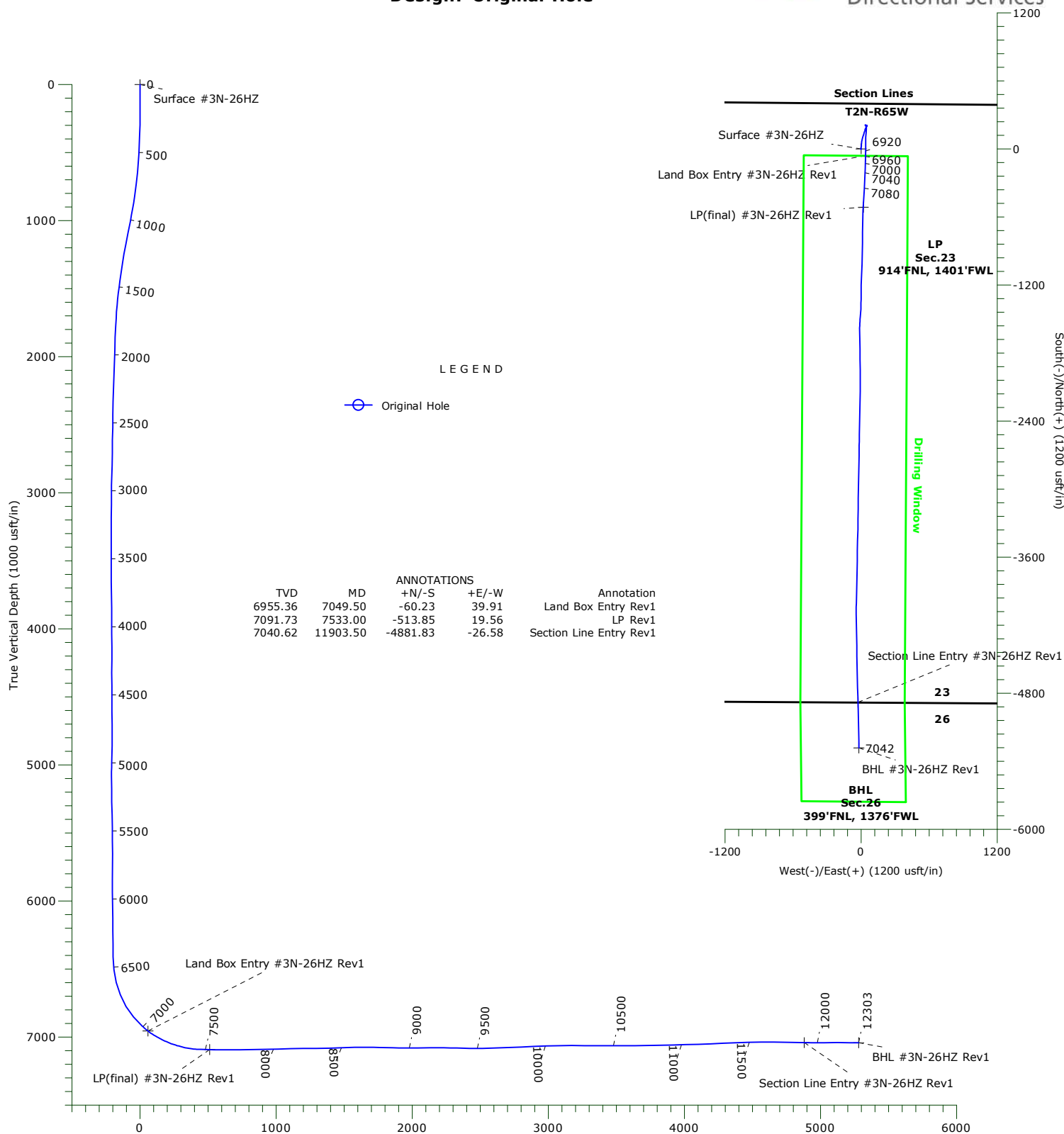




# US ROCKIES WATTENBERG PLANNING

Project: WELD-NAD83-UTMFT13N  
Site: GE Powers Pad  
Well: #3N-26HZ  
Wellbore: Original Hole  
Design: Original Hole



Name	TVD	+N/-S	+E/-W	Northing	Easting	Latitude	Longitude	Shape
Surface #3N-26HZ	0.00	0.00	0.00	14574369.00	1742242.14	40.130242°N	104.635711°W	Point
Land Box Entry #3N-26HZ Rev1	6955.36	-60.23	39.91	14574308.93	1742282.30	40.130077°N	104.635568°W	Point
Section Line Entry #3N-26HZ Rev1	7040.61	-4881.33	-26.59	14569487.61	1742235.56	40.116837°N	104.635806°W	Point
BHL #3N-26HZ Rev1	7041.66	-5281.25	-19.43	14569087.72	1742244.36	40.115739°N	104.635781°W	Point
LP(final) #3N-26HZ Rev1	7091.73	-513.85	19.56	14573855.24	1742263.80	40.128831°N	104.635641°W	Point

# Precision Drilling Corporation

## Survey Report

<b>Company:</b>	US ROCKIES WATTENBERG PLANNING	<b>Local Co-ordinate Reference:</b>	Well #3N-26HZ
<b>Project:</b>	WELD-NAD83-UTMFT13N	<b>TVD Reference:</b>	4890'GL+20'KB @ 4910.00usft (PD460)
<b>Site:</b>	GE Powers Pad	<b>MD Reference:</b>	4890'GL+20'KB @ 4910.00usft (PD460)
<b>Well:</b>	#3N-26HZ	<b>North Reference:</b>	True
<b>Wellbore:</b>	Original Hole	<b>Survey Calculation Method:</b>	Minimum Curvature
<b>Design:</b>	Original Hole	<b>Database:</b>	Compass_US

<b>Project</b>	WELD-NAD83-UTMFT13N		
<b>Map System:</b>	Universal Transverse Mercator (US Survey Feet)	<b>System Datum:</b>	Mean Sea Level
<b>Geo Datum:</b>	North American Datum 1983		
<b>Map Zone:</b>	Zone 13N (108 W to 102 W)		

Site	GE Powers Pad				
Site Position:		Northing:	14,574,369.28 usft	Latitude:	40.130243°N
From:	Lat/Long	Easting:	1,742,212.01 usft	Longitude:	104.635819°W
Position Uncertainty:	0.00 usft	Slot Radius:	13.20 in	Grid Convergence:	0.23 °

Well	#3N-26HZ					
Well Position	+N-S	0.00 usft	Northing:	14,574,369.00 usft	Latitude:	40.130242°N
	+E-W	0.00 usft	Easting:	1,742,242.14 usft	Longitude:	104.635711°W
Position Uncertainty		3.28 usft	Wellhead Elevation:	0.00 usft	Ground Level:	4,890.00 usft

<b>Wellbore</b>	Original Hole				
<b>Magnetics</b>	<b>Model Name</b>	<b>Sample Date</b>	<b>Declination (°)</b>	<b>Dip Angle (°)</b>	<b>Field Strength (nT)</b>
	IGRF2015	09/01/15	8.31	66.70	52,469

<b>Design</b>	Original Hole				
<b>Audit Notes:</b>					
<b>Version:</b>	1.0	<b>Phase:</b>	ACTUAL	<b>Tie On Depth:</b>	0.00
<b>Vertical Section:</b>	<b>Depth From (TVD) (usft)</b>	<b>+N-S (usft)</b>	<b>+E-W (usft)</b>	<b>Direction (°)</b>	
	0.00	0.00	0.00	180.41	

<b>Survey Program</b>	<b>Date</b>	11/03/15			
<b>From (usft)</b>	<b>To (usft)</b>	<b>Survey (Wellbore)</b>	<b>Tool Name</b>	<b>Description</b>	
117.00	1,840.00	Survey #1 (Original Hole)	APC_ISCWSA REV 2 MV Fixed:v2:standard declination		
1,870.00	12,238.00	Survey #4 (Original Hole)	APC_ISCWSA REV 2 MV Fixed:v2:crustal field declination		
12,303.00	12,303.00	Survey #5 (Original Hole)	APC_BLIND	OWSG BLIND	

<b>Survey</b>									
<b>Measured Depth (usft)</b>	<b>Inclination (°)</b>	<b>Azimuth (°)</b>	<b>Vertical Depth (usft)</b>	<b>+N-S (usft)</b>	<b>+E-W (usft)</b>	<b>Vertical Section (usft)</b>	<b>Dogleg Rate (°/100usft)</b>	<b>Build Rate (°/100usft)</b>	<b>Turn Rate (°/100usft)</b>
0.00	0.00	0.00	0.00	0.00	0.00	0.00	0.00	0.00	0.00
<b>Surface #3N-26HZ</b>									
117.00	0.93	187.13	116.99	-0.94	-0.12	0.94	0.79	0.79	0.00
206.00	0.48	296.99	205.99	-1.49	-0.54	1.49	1.33	-0.51	123.44
297.00	1.38	351.97	296.98	-0.23	-1.03	0.24	1.29	0.99	60.42
375.00	1.74	8.54	374.95	1.87	-0.99	-1.86	0.74	0.46	21.24
465.00	2.53	2.54	464.89	5.21	-0.70	-5.20	0.91	0.88	-6.67
555.00	3.83	9.10	554.75	10.16	-0.13	-10.16	1.50	1.44	7.29
735.00	7.16	7.86	733.89	27.21	2.35	-27.23	1.85	1.85	-0.69

# Precision Drilling Corporation

## Survey Report

<b>Company:</b>	US ROCKIES WATTENBERG PLANNING	<b>Local Co-ordinate Reference:</b>	Well #3N-26HZ
<b>Project:</b>	WELD-NAD83-UTMFT13N	<b>TVD Reference:</b>	4890'GL+20'KB @ 4910.00usft (PD460)
<b>Site:</b>	GE Powers Pad	<b>MD Reference:</b>	4890'GL+20'KB @ 4910.00usft (PD460)
<b>Well:</b>	#3N-26HZ	<b>North Reference:</b>	True
<b>Wellbore:</b>	Original Hole	<b>Survey Calculation Method:</b>	Minimum Curvature
<b>Design:</b>	Original Hole	<b>Database:</b>	Compass_US

### Survey

Measured Depth (usft)	Inclination (°)	Azimuth (°)	Vertical Depth (usft)	+N/-S (usft)	+E/-W (usft)	Vertical Section (usft)	Dogleg Rate (°/100usft)	Build Rate (°/100usft)	Turn Rate (°/100usft)
825.00	8.02	4.34	823.11	39.03	3.59	-39.05	1.09	0.96	-3.91
919.00	9.88	4.98	915.96	53.60	4.79	-53.63	1.98	1.98	0.68
1,006.00	11.04	10.25	1,001.51	69.24	6.92	-69.28	1.73	1.33	6.06
1,096.00	11.64	11.28	1,089.75	86.62	10.23	-86.69	0.70	0.67	1.14
1,186.00	11.28	17.18	1,177.96	103.93	14.61	-104.04	1.36	-0.40	6.56
1,321.00	9.60	20.03	1,310.72	127.13	22.36	-127.28	1.30	-1.24	2.11
1,411.00	8.75	18.92	1,399.57	140.65	27.15	-140.84	0.96	-0.94	-1.23
1,546.00	6.71	14.60	1,533.34	158.00	32.47	-158.23	1.57	-1.51	-3.20
1,636.00	5.29	11.51	1,622.84	167.15	34.62	-167.40	1.62	-1.58	-3.43
1,781.00	3.21	23.54	1,767.44	177.43	37.58	-177.69	1.55	-1.43	8.30
1,840.00	2.05	23.54	1,826.38	179.91	38.66	-180.18	1.97	-1.97	0.00
1,870.00	1.85	32.31	1,856.36	180.81	39.13	-181.09	1.20	-0.67	29.23
1,965.00	2.20	25.46	1,951.30	183.75	40.74	-184.04	0.45	0.37	-7.21
2,058.00	2.29	24.58	2,044.23	187.05	42.28	-187.35	0.10	0.10	-0.95
2,153.00	2.20	10.16	2,139.16	190.57	43.39	-190.88	0.60	-0.09	-15.18
2,248.00	1.67	8.58	2,234.10	193.74	43.92	-194.05	0.56	-0.56	-1.66
2,344.00	1.14	12.80	2,330.07	196.05	44.34	-196.36	0.56	-0.55	4.40
2,439.00	0.97	9.28	2,425.06	197.77	44.68	-198.08	0.19	-0.18	-3.71
2,534.00	1.23	326.04	2,520.04	199.41	44.24	-199.72	0.89	0.27	-45.52
2,627.00	1.23	309.69	2,613.02	200.87	42.91	-201.17	0.38	0.00	-17.58
2,721.00	0.97	320.42	2,707.00	202.13	41.63	-202.42	0.35	-0.28	11.41
2,816.00	1.41	352.06	2,801.98	203.91	40.95	-204.20	0.82	0.46	33.31
2,911.00	2.20	342.74	2,896.94	206.81	40.25	-207.09	0.88	0.83	-9.81
3,006.00	1.06	278.93	2,991.90	208.68	38.84	-208.96	2.08	-1.20	-67.17
3,101.00	0.97	315.14	3,086.89	209.39	37.41	-209.65	0.67	-0.09	38.12
3,196.00	0.09	290.89	3,181.88	209.99	36.77	-210.24	0.94	-0.93	-25.53
3,291.00	0.26	148.86	3,276.88	209.83	36.81	-210.09	0.35	0.18	-149.51
3,386.00	0.88	44.62	3,371.88	210.16	37.44	-210.43	1.03	0.65	-109.73
3,481.00	0.26	144.64	3,466.88	210.51	38.07	-210.77	1.01	-0.65	105.28
3,576.00	0.70	83.29	3,561.87	210.40	38.77	-210.67	0.65	0.46	-64.58
3,671.00	1.32	103.15	3,656.86	210.22	40.42	-210.50	0.74	0.65	20.91
3,766.00	1.76	133.39	3,751.82	208.97	42.54	-209.27	0.96	0.46	31.83
3,860.00	1.23	120.55	3,845.79	207.46	44.46	-207.78	0.66	-0.56	-13.66
3,956.00	1.23	97.53	3,941.77	206.80	46.37	-207.13	0.51	0.00	-23.98
4,051.00	0.97	100.69	4,036.75	206.52	48.17	-206.86	0.28	-0.27	3.33
4,147.00	0.97	159.75	4,132.74	205.61	49.25	-205.96	1.00	0.00	61.52
4,241.00	0.70	70.98	4,226.73	205.05	50.07	-205.40	1.26	-0.29	-94.44
4,337.00	0.97	53.23	4,322.72	205.73	51.27	-206.09	0.39	0.28	-18.49
4,432.00	0.79	189.28	4,417.72	205.56	51.81	-205.93	1.72	-0.19	143.21
4,527.00	0.35	28.80	4,512.72	205.17	51.85	-205.54	1.19	-0.46	-168.93
4,622.00	1.23	268.74	4,607.71	205.40	50.97	-205.76	1.51	0.93	-126.38
4,717.00	1.93	235.34	4,702.68	204.47	48.63	-204.81	1.19	0.74	-35.16
4,812.00	0.88	265.05	4,797.65	203.50	46.59	-203.82	1.31	-1.11	31.27

# Precision Drilling Corporation

## Survey Report

<b>Company:</b>	US ROCKIES WATTENBERG PLANNING	<b>Local Co-ordinate Reference:</b>	Well #3N-26HZ
<b>Project:</b>	WELD-NAD83-UTMFT13N	<b>TVD Reference:</b>	4890'GL+20'KB @ 4910.00usft (PD460)
<b>Site:</b>	GE Powers Pad	<b>MD Reference:</b>	4890'GL+20'KB @ 4910.00usft (PD460)
<b>Well:</b>	#3N-26HZ	<b>North Reference:</b>	True
<b>Wellbore:</b>	Original Hole	<b>Survey Calculation Method:</b>	Minimum Curvature
<b>Design:</b>	Original Hole	<b>Database:</b>	Compass_US

### Survey

Measured Depth (usft)	Inclination (°)	Azimuth (°)	Vertical Depth (usft)	+N/-S (usft)	+E/-W (usft)	Vertical Section (usft)	Dogleg Rate (°/100usft)	Build Rate (°/100usft)	Turn Rate (°/100usft)
5,002.00	2.11	20.71	4,987.60	206.64	46.37	-206.97	1.38	0.65	60.87
5,096.00	0.53	99.28	5,081.58	208.19	47.41	-208.53	2.20	-1.68	83.59
5,191.00	1.14	184.71	5,176.57	207.18	47.77	-207.52	1.28	0.64	89.93
5,286.00	0.44	193.68	5,271.56	205.88	47.60	-206.22	0.75	-0.74	9.44
5,381.00	1.85	192.98	5,366.54	204.03	47.17	-204.37	1.48	1.48	-0.74
5,476.00	0.97	185.42	5,461.51	201.74	46.75	-202.07	0.94	-0.93	-7.96
5,571.00	0.26	175.75	5,556.51	200.72	46.69	-201.05	0.75	-0.75	-10.18
5,666.00	0.44	92.25	5,651.50	200.49	47.07	-200.83	0.51	0.19	-87.89
5,856.00	0.88	29.68	5,841.49	201.73	48.52	-202.07	0.41	0.23	-32.93
5,951.00	1.14	150.09	5,936.49	201.55	49.36	-201.90	1.85	0.27	126.75
6,141.00	0.70	205.81	6,126.46	198.86	49.79	-199.22	0.50	-0.23	29.33
6,234.00	0.70	232.70	6,219.46	198.01	49.10	-198.35	0.35	0.00	28.91
6,329.00	0.53	207.92	6,314.45	197.27	48.43	-197.61	0.33	-0.18	-26.08
6,425.00	0.88	230.07	6,410.44	196.40	47.65	-196.74	0.46	0.36	23.07
6,519.00	6.95	182.61	6,504.19	190.25	46.84	-190.58	6.80	6.46	-50.49
6,614.00	14.16	179.44	6,597.52	172.87	46.69	-173.20	7.61	7.59	-3.34
6,710.00	21.46	185.24	6,688.87	143.60	45.20	-143.92	7.82	7.60	6.04
6,805.00	30.78	183.84	6,774.07	101.95	41.98	-102.24	9.83	9.81	-1.47
6,900.00	40.71	179.97	6,851.09	46.57	40.36	-46.85	10.72	10.45	-4.07
6,995.00	46.43	180.14	6,919.89	-18.88	40.30	18.60	6.02	6.02	0.18
7,049.51	52.33	180.89	6,955.36	-60.24	39.91	59.95	10.88	10.83	1.37
<b>Land Box Entry #3N-26HZ Rev1</b>									
7,090.00	56.72	181.37	6,978.86	-93.20	39.26	92.92	10.88	10.84	1.19
7,183.00	64.98	182.43	7,024.12	-174.30	36.54	174.04	8.94	8.88	1.14
7,278.00	72.11	182.78	7,058.84	-262.57	32.52	262.33	7.51	7.51	0.37
7,373.00	80.11	182.78	7,081.63	-354.61	28.05	354.40	8.42	8.42	0.00
7,468.00	88.90	183.13	7,090.72	-448.96	23.17	448.78	9.26	9.25	0.37
7,533.00	89.32	183.25	7,091.73	-513.85	19.56	513.69	0.68	0.65	0.19
<b>LP(final) #3N-26HZ Rev1</b>									
7,563.00	89.52	183.31	7,092.03	-543.80	17.84	543.65	0.68	0.65	0.19
7,659.00	89.78	181.55	7,092.61	-639.70	13.77	639.59	1.85	0.27	-1.83
7,754.00	90.66	180.32	7,092.25	-734.69	12.22	734.58	1.59	0.93	-1.29
7,847.00	90.48	179.79	7,091.32	-827.68	12.13	827.57	0.60	-0.19	-0.57
7,942.00	90.92	181.37	7,090.16	-922.67	11.17	922.56	1.73	0.46	1.66
8,035.00	91.45	182.43	7,088.24	-1,015.59	8.09	1,015.51	1.27	0.57	1.14
8,127.00	91.71	182.61	7,085.70	-1,107.47	4.04	1,107.41	0.34	0.28	0.20
8,220.00	91.10	181.20	7,083.42	-1,200.39	0.95	1,200.35	1.65	-0.66	-1.52
8,316.00	90.40	179.62	7,082.17	-1,296.37	0.26	1,296.34	1.80	-0.73	-1.65
8,410.00	91.01	182.25	7,081.01	-1,390.35	-1.27	1,390.32	2.87	0.65	2.80
8,504.00	92.24	185.24	7,078.34	-1,484.09	-7.40	1,484.11	3.44	1.31	3.18
8,598.00	90.66	180.67	7,075.96	-1,577.91	-12.25	1,577.96	5.14	-1.68	-4.86
8,690.00	90.04	178.74	7,075.40	-1,669.90	-11.77	1,669.95	2.20	-0.67	-2.10
8,783.00	88.81	179.27	7,076.34	-1,762.88	-10.16	1,762.91	1.44	-1.32	0.57
8,877.00	88.55	178.74	7,078.50	-1,856.84	-8.53	1,856.86	0.63	-0.28	-0.56

# Precision Drilling Corporation

## Survey Report

<b>Company:</b>	US ROCKIES WATTENBERG PLANNING	<b>Local Co-ordinate Reference:</b>	Well #3N-26HZ
<b>Project:</b>	WELD-NAD83-UTMFT13N	<b>TVD Reference:</b>	4890'GL+20'KB @ 4910.00usft (PD460)
<b>Site:</b>	GE Powers Pad	<b>MD Reference:</b>	4890'GL+20'KB @ 4910.00usft (PD460)
<b>Well:</b>	#3N-26HZ	<b>North Reference:</b>	True
<b>Wellbore:</b>	Original Hole	<b>Survey Calculation Method:</b>	Minimum Curvature
<b>Design:</b>	Original Hole	<b>Database:</b>	Compass_US

### Survey

Measured Depth (usft)	Inclination (°)	Azimuth (°)	Vertical Depth (usft)	+N/S (usft)	+E/W (usft)	Vertical Section (usft)	Dogleg Rate (°/100usft)	Build Rate (°/100usft)	Turn Rate (°/100usft)
8,969.00	89.60	179.79	7,079.99	-1,948.82	-7.35	1,948.82	1.61	1.14	1.14
9,064.00	90.48	180.14	7,079.92	-2,043.82	-7.29	2,043.82	1.00	0.93	0.37
9,158.00	90.75	181.02	7,078.91	-2,137.81	-8.24	2,137.81	0.98	0.29	0.94
9,254.00	89.52	181.02	7,078.68	-2,233.79	-9.95	2,233.81	1.28	-1.28	0.00
9,349.00	88.11	180.85	7,080.65	-2,328.76	-11.50	2,328.78	1.49	-1.48	-0.18
9,444.00	89.16	181.20	7,082.91	-2,423.71	-13.20	2,423.75	1.17	1.11	0.37
9,539.00	90.40	181.55	7,083.28	-2,518.68	-15.48	2,518.73	1.36	1.31	0.37
9,634.00	92.51	180.14	7,080.86	-2,613.63	-16.88	2,613.69	2.67	2.22	-1.48
9,728.00	92.77	181.20	7,076.54	-2,707.53	-17.98	2,707.59	1.16	0.28	1.13
9,823.00	92.24	181.55	7,072.38	-2,802.41	-20.25	2,802.48	0.67	-0.56	0.37
9,916.00	92.42	181.02	7,068.60	-2,895.31	-22.34	2,895.39	0.60	0.19	-0.57
10,009.00	92.24	180.85	7,064.82	-2,988.22	-23.85	2,988.31	0.27	-0.19	-0.18
10,101.00	91.01	180.32	7,062.21	-3,080.17	-24.79	3,080.27	1.46	-1.34	-0.58
10,194.00	89.87	180.50	7,061.50	-3,173.17	-25.46	3,173.27	1.24	-1.23	0.19
10,286.00	89.34	181.20	7,062.13	-3,265.15	-26.82	3,265.26	0.95	-0.58	0.76
10,378.00	90.22	181.02	7,062.49	-3,357.14	-28.60	3,357.25	0.98	0.96	-0.20
10,472.00	89.87	181.20	7,062.41	-3,451.12	-30.43	3,451.25	0.42	-0.37	0.19
10,564.00	89.52	181.55	7,062.90	-3,543.09	-32.63	3,543.23	0.54	-0.38	0.38
10,658.00	90.22	180.50	7,063.11	-3,637.07	-34.31	3,637.22	1.34	0.74	-1.12
10,752.00	91.63	180.85	7,061.60	-3,731.05	-35.42	3,731.21	1.55	1.50	0.37
10,845.00	91.36	181.02	7,059.17	-3,824.01	-36.94	3,824.17	0.34	-0.29	0.18
10,938.00	90.84	181.20	7,057.39	-3,916.97	-38.74	3,917.15	0.59	-0.56	0.19
11,030.00	91.45	182.08	7,055.55	-4,008.91	-41.37	4,009.11	1.16	0.66	0.96
11,123.00	92.15	179.62	7,052.63	-4,101.85	-42.75	4,102.05	2.75	0.75	-2.65
11,215.00	92.33	179.27	7,049.03	-4,193.78	-41.86	4,193.97	0.43	0.20	-0.38
11,309.00	92.51	178.74	7,045.06	-4,287.68	-40.23	4,287.86	0.59	0.19	-0.56
11,401.00	92.42	178.74	7,041.10	-4,379.57	-38.21	4,379.73	0.10	-0.10	0.00
11,494.00	91.54	179.44	7,037.89	-4,472.50	-36.73	4,472.65	1.21	-0.95	0.75
11,586.00	90.04	178.39	7,036.62	-4,564.47	-34.99	4,564.61	1.99	-1.63	-1.14
11,679.00	89.60	178.56	7,036.91	-4,657.44	-32.52	4,657.55	0.51	-0.47	0.18
11,772.00	88.72	178.39	7,038.28	-4,750.39	-30.04	4,750.49	0.96	-0.95	-0.18
11,865.00	89.08	178.56	7,040.06	-4,843.34	-27.57	4,843.42	0.43	0.39	0.18
11,903.00	89.26	178.49	7,040.61	-4,881.33	-26.59	4,881.39	0.50	0.47	-0.18
<b>Section Line Entry #3N-26HZ Rev1</b>									
11,959.00	89.52	178.39	7,041.21	-4,937.30	-25.07	4,937.36	0.50	0.47	-0.18
12,051.00	90.31	178.91	7,041.35	-5,029.28	-22.90	5,029.31	1.03	0.86	0.57
12,145.00	90.13	179.09	7,040.99	-5,123.26	-21.26	5,123.28	0.27	-0.19	0.19
12,238.00	89.60	179.44	7,041.21	-5,216.25	-20.06	5,216.26	0.68	-0.57	0.38
12,303.00	89.60	179.44	7,041.66	-5,281.25	-19.43	5,281.25	0.00	0.00	0.00
<b>BHL #3N-26HZ Rev1</b>									

# Precision Drilling Corporation

## Survey Report

<b>Company:</b>	US ROCKIES WATTENBERG PLANNING	<b>Local Co-ordinate Reference:</b>	Well #3N-26HZ
<b>Project:</b>	WELD-NAD83-UTMFT13N	<b>TVD Reference:</b>	4890'GL+20'KB @ 4910.00usft (PD460)
<b>Site:</b>	GE Powers Pad	<b>MD Reference:</b>	4890'GL+20'KB @ 4910.00usft (PD460)
<b>Well:</b>	#3N-26HZ	<b>North Reference:</b>	True
<b>Wellbore:</b>	Original Hole	<b>Survey Calculation Method:</b>	Minimum Curvature
<b>Design:</b>	Original Hole	<b>Database:</b>	Compass_US

### Design Targets

Target Name - hit/miss target - Shape	Dip Angle (°)	Dip Dir. (°)	TVD (usft)	+N/-S (usft)	+E/-W (usft)	Northing (usft)	Easting (usft)	Latitude	Longitude
Surface #3N-26HZ - actual wellpath hits target center - Point	0.00	0.00	0.00	0.00	0.00	14,574,369.00	1,742,242.14	40.130242°N	104.635711°W
Land Box Entry #3N-2 - actual wellpath hits target center - Point	0.00	0.00	6,955.36	-60.23	39.91	14,574,308.93	1,742,282.30	40.130077°N	104.635569°W
Section Line Entry #3l - actual wellpath hits target center - Point	0.00	0.00	7,040.61	-4,881.33	-26.59	14,569,487.60	1,742,235.56	40.116837°N	104.635806°W
BHL #3N-26HZ Rev1 - actual wellpath hits target center - Point	0.00	0.00	7,041.66	-5,281.25	-19.43	14,569,087.71	1,742,244.36	40.115739°N	104.635781°W
LP(final) #3N-26HZ R - actual wellpath hits target center - Point	0.00	0.00	7,091.73	-513.85	19.56	14,573,855.24	1,742,263.80	40.128831°N	104.635641°W

### Design Annotations

Measured Depth (usft)	Vertical Depth (usft)	Local Coordinates		Comment
		+N/-S (usft)	+E/-W (usft)	
7,049.50	6,955.36	-60.23	39.91	Land Box Entry Rev1
7,533.00	7,091.73	-513.85	19.56	LP Rev1
11,903.50	7,040.62	-4,881.83	-26.58	Section Line Entry Rev1