

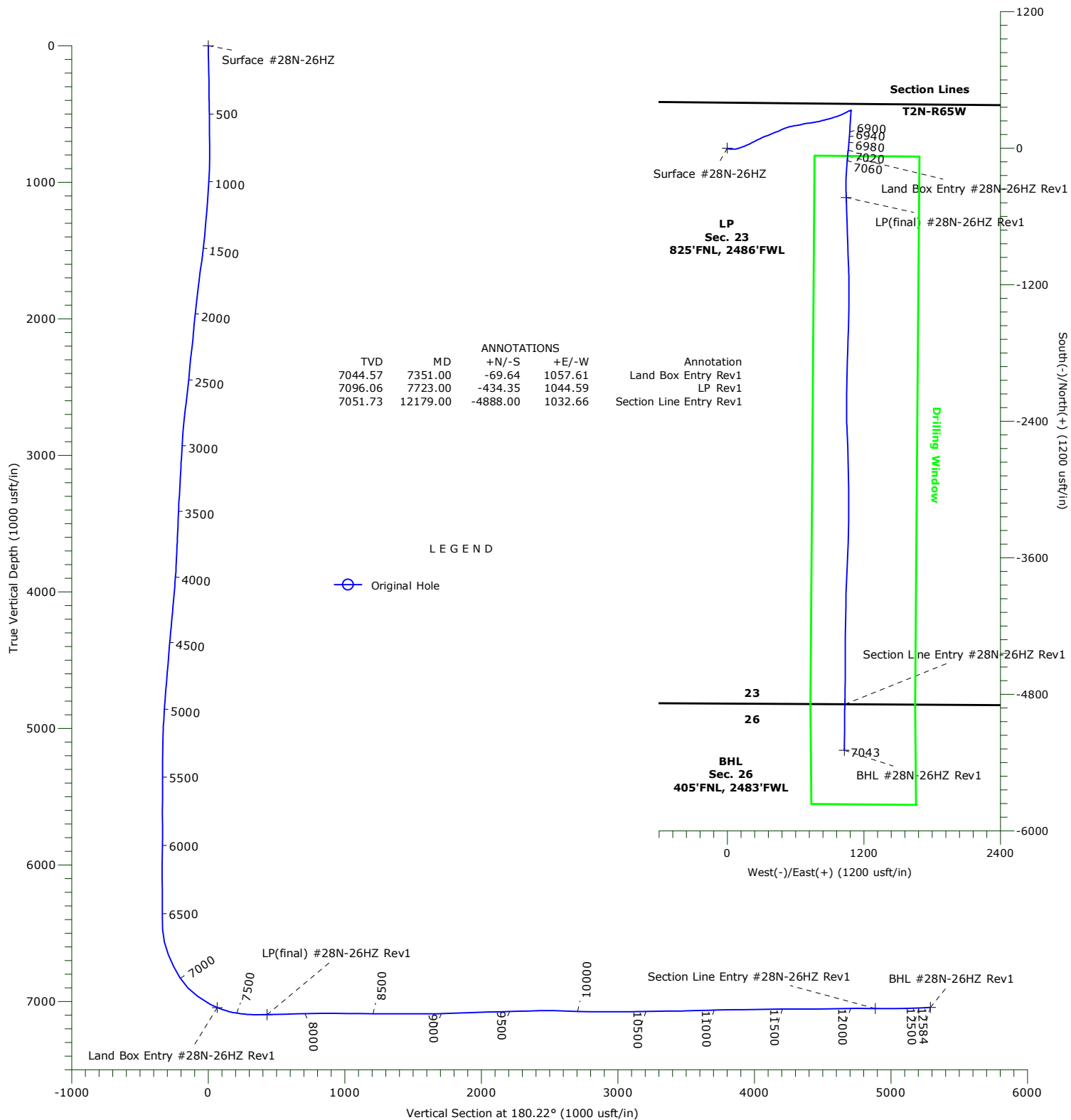


US ROCKIES WATTENBERG PLANNING

Project: WELD-NAD83-UTMFT13N
Site: GE Powers Pad
Well: #28N-26HZ
Wellbore: Original Hole
Design: Original Hole



Precision
Directional Services



WELLBORE TARGET DETAILS

Name	TVD	+N/-S	+E/-W	Northing	Easting	Latitude	Longitude	Shape
Surface #28N-26HZ	0.00	0.00	0.00	14574368.94	1742302.01	40.130241°N	104.635497°W	Point
BHL #28N-26HZ Rev1	7043.23	-5292.83	1027.81	14569080.37	1743351.51	40.115706°N	104.631821°W	Point
Land Box Entry #28N-26HZ Rev1	7044.57	-69.64	1057.61	14574303.64	1743359.90	40.130050°N	104.631713°W	Point
Section Line Entry #28N-26HZ Rev1	7051.73	-4888.00	1032.66	14569485.22	1743354.70	40.116818°N	104.631803°W	Point
LP(final) #28N-26HZ Rev1	7096.06	-434.35	1044.59	14573938.88	1743348.37	40.129048°N	104.631760°W	Point

Precision Drilling Corporation

Survey Report

Company:	US ROCKIES WATTENBERG PLANNING	Local Co-ordinate Reference:	Well #28N-26HZ
Project:	WELD-NAD83-UTMFT13N	TVD Reference:	4890'GL+20'KB @ 4910.00usft (PD460)
Site:	GE Powers Pad	MD Reference:	4890'GL+20'KB @ 4910.00usft (PD460)
Well:	#28N-26HZ	North Reference:	True
Wellbore:	Original Hole	Survey Calculation Method:	Minimum Curvature
Design:	Original Hole	Database:	Compass_US

Project	WELD-NAD83-UTMFT13N		
Map System:	Universal Transverse Mercator (US Survey Feet)	System Datum:	Mean Sea Level
Geo Datum:	North American Datum 1983		
Map Zone:	Zone 13N (108 W to 102 W)		

Site	GE Powers Pad				
Site Position:		Northing:	14,574,369.28 usft	Latitude:	40.130243°N
From:	Lat/Long	Easting:	1,742,212.01 usft	Longitude:	104.635819°W
Position Uncertainty:	0.00 usft	Slot Radius:	13.20 in	Grid Convergence:	0.23 °

Well		#28N-26HZ				
Well Position	+N-S	0.00 usft	Northing:	14,574,368.94 usft	Latitude:	40.130241°N
	+E-W	0.00 usft	Easting:	1,742,302.01 usft	Longitude:	104.635497°W
Position Uncertainty		3.28 usft	Wellhead Elevation:	0.00 usft	Ground Level:	4,890.00 usft

Wellbore	Original Hole				
Magnetics	Model Name	Sample Date	Declination (°)	Dip Angle (°)	Field Strength (nT)
	IGRF2015	09/01/15	8.31	66.70	52,469

Design	Original Hole				
Audit Notes:					
Version:	1.0	Phase:	ACTUAL	Tie On Depth:	0.00
Vertical Section:	Depth From (TVD) (usft)	+N-S (usft)	+E-W (usft)	Direction (°)	
	0.00	0.00	0.00	180.22	

Survey Program	Date	11/04/15			
From (usft)	To (usft)	Survey (Wellbore)	Tool Name	Description	
117.00	1,809.00	Survey #1 (Original Hole)	APC_ISCWSA REV 2 MV Fixed:v2:standard declination		
1,964.00	12,519.00	Survey #4 (Original Hole)	APC_ISCWSA REV 2 MV Fixed:v2:crustal field declination		
12,584.00	12,584.00	Survey #5 (Original Hole)	APC_BLIND	OWSG BLIND	

Survey										
Measured Depth (usft)	Inclination (°)	Azimuth (°)	Vertical Depth (usft)	+N-S (usft)	+E-W (usft)	Vertical Section (usft)	Dogleg Rate (°/100usft)	Build Rate (°/100usft)	Turn Rate (°/100usft)	
0.00	0.00	0.00	0.00	0.00	0.00	0.00	0.00	0.00	0.00	
Surface #28N-26HZ										
117.00	1.23	157.80	116.99	-1.16	0.47	1.16	1.05	1.05	0.00	
206.00	1.52	152.66	205.97	-3.10	1.38	3.09	0.35	0.33	-5.78	
300.00	2.65	109.06	299.91	-4.91	4.00	4.90	1.99	1.20	-46.38	
420.00	4.77	96.44	419.65	-6.38	11.59	6.33	1.88	1.77	-10.52	
510.00	6.01	97.52	509.25	-7.42	19.97	7.34	1.38	1.38	1.20	
645.00	7.76	92.39	643.27	-8.72	36.09	8.58	1.37	1.30	-3.80	
735.00	7.73	93.15	732.45	-9.31	48.20	9.12	0.12	-0.03	0.84	

Precision Drilling Corporation

Survey Report

Company:	US ROCKIES WATTENBERG PLANNING	Local Co-ordinate Reference:	Well #28N-26HZ
Project:	WELD-NAD83-UTMFT13N	TVD Reference:	4890'GL+20'KB @ 4910.00usft (PD460)
Site:	GE Powers Pad	MD Reference:	4890'GL+20'KB @ 4910.00usft (PD460)
Well:	#28N-26HZ	North Reference:	True
Wellbore:	Original Hole	Survey Calculation Method:	Minimum Curvature
Design:	Original Hole	Database:	Compass_US

Survey

Measured Depth (usft)	Inclination (°)	Azimuth (°)	Vertical Depth (usft)	+N/-S (usft)	+E/-W (usft)	Vertical Section (usft)	Dogleg Rate (°/100usft)	Build Rate (°/100usft)	Turn Rate (°/100usft)
825.00	8.46	86.52	821.56	-9.24	60.86	9.00	1.32	0.81	-7.37
915.00	9.31	78.72	910.48	-7.41	74.60	7.12	1.64	0.94	-8.67
1,006.00	10.33	75.03	1,000.15	-3.86	89.71	3.52	1.32	1.12	-4.05
1,141.00	12.62	68.06	1,132.44	4.78	115.08	-5.22	1.98	1.70	-5.16
1,231.00	13.05	70.71	1,220.20	11.81	133.79	-12.32	0.81	0.48	2.94
1,321.00	13.88	70.23	1,307.72	18.81	153.54	-19.40	0.93	0.92	-0.53
1,411.00	14.18	67.18	1,395.04	26.74	173.86	-27.41	0.89	0.33	-3.39
1,501.00	14.75	62.39	1,482.19	36.33	194.18	-37.07	1.47	0.63	-5.32
1,591.00	15.12	62.32	1,569.15	47.09	214.72	-47.91	0.41	0.41	-0.08
1,681.00	15.97	62.69	1,655.85	58.22	236.12	-59.13	0.95	0.94	0.41
1,771.00	15.75	64.21	1,742.43	69.22	258.12	-70.21	0.52	-0.24	1.69
1,809.00	15.57	64.39	1,779.02	73.66	267.36	-74.69	0.49	-0.47	0.47
1,964.00	14.16	62.37	1,928.83	91.45	302.92	-92.61	0.97	-0.91	-1.30
2,059.00	14.51	68.70	2,020.88	101.16	324.30	-102.41	1.69	0.37	6.66
2,152.00	16.18	74.68	2,110.56	108.82	347.66	-110.15	2.47	1.80	6.43
2,247.00	14.86	65.53	2,202.11	117.36	371.52	-118.79	2.92	-1.39	-9.63
2,343.00	14.25	64.66	2,295.03	127.52	393.40	-129.03	0.67	-0.64	-0.91
2,438.00	15.12	69.40	2,386.93	136.88	415.57	-138.48	1.56	0.92	4.99
2,533.00	16.44	71.51	2,478.35	145.51	439.91	-147.19	1.51	1.39	2.22
2,626.00	15.04	62.55	2,567.87	155.24	463.11	-157.02	3.01	-1.51	-9.63
2,720.00	16.18	65.71	2,658.40	166.25	485.87	-168.12	1.51	1.21	3.36
2,815.00	15.12	69.40	2,749.88	176.06	509.53	-178.01	1.53	-1.12	3.88
2,910.00	14.86	70.81	2,841.65	184.42	532.63	-186.47	0.47	-0.27	1.48
3,005.00	15.83	81.35	2,933.28	190.38	556.95	-192.51	3.10	1.02	11.09
3,100.00	15.39	77.31	3,024.78	195.10	582.06	-197.33	1.23	-0.46	-4.25
3,195.00	17.15	82.06	3,115.98	199.80	608.24	-202.13	2.32	1.85	5.00
3,290.00	16.09	78.72	3,207.01	204.31	635.02	-206.75	1.50	-1.12	-3.52
3,385.00	14.33	74.15	3,298.68	210.10	659.24	-212.63	2.24	-1.85	-4.81
3,480.00	16.44	81.53	3,390.28	215.29	683.85	-217.91	3.03	2.22	7.77
3,575.00	16.97	83.82	3,481.27	218.76	710.93	-221.49	0.89	0.56	2.41
3,670.00	14.68	80.48	3,572.67	222.25	736.59	-225.07	2.59	-2.41	-3.52
3,765.00	12.22	78.19	3,665.05	226.29	758.31	-229.20	2.65	-2.59	-2.41
3,860.00	14.25	81.00	3,757.53	230.18	779.70	-233.17	2.24	2.14	2.96
3,955.00	17.06	78.02	3,848.99	234.90	804.89	-237.99	3.08	2.96	-3.14
4,050.00	15.83	74.68	3,940.11	241.22	831.02	-244.41	1.63	-1.29	-3.52
4,145.00	19.96	75.91	4,030.49	248.59	859.25	-251.89	4.37	4.35	1.29
4,240.00	19.35	74.85	4,119.96	256.66	890.17	-260.07	0.74	-0.64	-1.12
4,336.00	16.97	72.92	4,211.17	264.93	918.92	-268.45	2.56	-2.48	-2.01
4,431.00	15.30	72.39	4,302.43	272.79	944.12	-276.42	1.76	-1.76	-0.56
4,526.00	14.07	70.46	4,394.32	280.45	966.95	-284.16	1.39	-1.29	-2.03
4,621.00	12.84	68.72	4,486.71	288.14	987.67	-291.93	1.36	-1.29	-1.83
4,716.00	11.78	67.12	4,579.53	295.74	1,006.44	-299.60	1.17	-1.12	-1.68
4,811.00	11.26	64.30	4,672.61	303.53	1,023.73	-307.46	0.81	-0.55	-2.97

Precision Drilling Corporation

Survey Report

Company:	US ROCKIES WATTENBERG PLANNING	Local Co-ordinate Reference:	Well #28N-26HZ
Project:	WELD-NAD83-UTMFT13N	TVD Reference:	4890'GL+20'KB @ 4910.00usft (PD460)
Site:	GE Powers Pad	MD Reference:	4890'GL+20'KB @ 4910.00usft (PD460)
Well:	#28N-26HZ	North Reference:	True
Wellbore:	Original Hole	Survey Calculation Method:	Minimum Curvature
Design:	Original Hole	Database:	Compass_US

Survey

Measured Depth (usft)	Inclination (°)	Azimuth (°)	Vertical Depth (usft)	+N/-S (usft)	+E/-W (usft)	Vertical Section (usft)	Dogleg Rate (°/100usft)	Build Rate (°/100usft)	Turn Rate (°/100usft)
4,907.00	9.94	62.02	4,766.97	311.49	1,039.50	-315.48	1.44	-1.38	-2.38
5,001.00	7.83	63.43	4,859.84	318.16	1,052.39	-322.20	2.26	-2.24	1.50
5,095.00	6.86	61.14	4,953.07	323.73	1,063.03	-327.81	1.08	-1.03	-2.44
5,190.00	4.22	71.51	5,047.62	327.58	1,071.32	-331.69	2.96	-2.78	10.92
5,285.00	3.25	79.42	5,142.42	329.18	1,077.28	-333.32	1.15	-1.02	8.33
5,380.00	3.17	69.58	5,237.27	330.59	1,082.39	-334.75	0.59	-0.08	-10.36
5,475.00	0.79	148.68	5,332.21	330.95	1,085.19	-335.11	3.28	-2.51	83.26
5,570.00	0.88	75.55	5,427.21	330.57	1,086.24	-334.74	1.05	0.09	-76.98
5,665.00	0.88	53.23	5,522.20	331.19	1,087.53	-335.37	0.36	0.00	-23.49
5,760.00	0.53	56.75	5,617.19	331.87	1,088.48	-336.05	0.37	-0.37	3.71
5,855.00	1.06	221.80	5,712.18	331.46	1,088.26	-335.63	1.66	0.56	173.74
5,950.00	0.53	5.07	5,807.18	331.24	1,087.72	-335.41	1.60	-0.56	150.81
6,140.00	1.23	27.21	5,997.16	333.93	1,088.73	-338.10	0.40	0.37	11.65
6,235.00	0.79	234.64	6,092.15	334.45	1,088.66	-338.63	2.07	-0.46	-160.60
6,329.00	0.53	232.70	6,186.14	333.82	1,087.79	-337.99	0.28	-0.28	-2.06
6,424.00	0.62	230.24	6,281.14	333.22	1,087.04	-337.39	0.10	0.09	-2.59
6,518.00	0.53	219.69	6,375.13	332.56	1,086.37	-336.73	0.15	-0.10	-11.22
6,613.00	2.73	177.68	6,470.09	329.96	1,086.18	-334.13	2.49	2.32	-44.22
6,709.00	12.84	180.67	6,565.08	316.98	1,086.15	-321.15	10.54	10.53	3.11
6,804.00	20.66	181.55	6,655.98	289.63	1,085.57	-293.79	8.24	8.23	0.93
6,899.00	26.64	184.71	6,742.97	251.61	1,083.37	-255.77	6.43	6.29	3.33
6,994.00	33.24	185.42	6,825.24	204.41	1,079.16	-208.56	6.96	6.95	0.75
7,089.00	43.70	182.25	6,899.53	145.53	1,075.40	-149.66	11.20	11.01	-3.34
7,184.00	53.20	185.07	6,962.47	74.68	1,070.74	-78.79	10.24	10.00	2.97
7,277.00	61.38	185.24	7,012.69	-3.18	1,063.71	-0.90	8.80	8.80	0.18
7,351.01	67.54	185.24	7,044.58	-69.66	1,057.61	65.59	8.33	8.33	0.00
Land Box Entry #28N-26HZ Rev1									
7,372.00	69.29	185.24	7,052.30	-89.09	1,055.83	85.03	8.33	8.33	0.00
7,467.00	78.00	184.89	7,079.03	-179.80	1,047.79	175.78	9.18	9.17	-0.37
7,562.00	85.12	182.08	7,092.96	-273.53	1,042.11	269.53	8.04	7.49	-2.96
7,658.00	90.40	177.86	7,096.72	-369.40	1,042.16	365.40	7.04	5.50	-4.40
7,723.00	90.76	177.86	7,096.06	-434.35	1,044.59	430.34	0.55	0.55	0.00
LP(final) #28N-26HZ Rev1									
7,753.00	90.92	177.86	7,095.62	-464.33	1,045.71	460.31	0.55	0.55	0.00
7,847.00	92.15	177.86	7,093.10	-558.23	1,049.22	554.19	1.31	1.31	0.00
7,942.00	90.84	178.74	7,090.62	-653.15	1,052.04	649.11	1.66	-1.38	0.93
8,035.00	91.45	178.21	7,088.77	-746.10	1,054.51	742.04	0.87	0.66	-0.57
8,127.00	89.96	177.51	7,087.63	-838.02	1,057.95	833.95	1.79	-1.62	-0.76
8,220.00	89.60	178.21	7,087.99	-930.96	1,061.42	926.87	0.85	-0.39	0.75
8,314.00	90.13	177.16	7,088.21	-1,024.88	1,065.22	1,020.78	1.25	0.56	-1.12
8,409.00	89.08	179.44	7,088.87	-1,119.83	1,068.03	1,115.72	2.64	-1.11	2.40
8,503.00	89.16	179.62	7,090.31	-1,213.81	1,068.81	1,209.70	0.21	0.09	0.19
8,598.00	90.04	180.14	7,090.97	-1,308.81	1,069.00	1,304.69	1.08	0.93	0.55
8,690.00	90.04	180.67	7,090.91	-1,400.81	1,068.35	1,396.69	0.58	0.00	0.58

Precision Drilling Corporation

Survey Report

Company:	US ROCKIES WATTENBERG PLANNING	Local Co-ordinate Reference:	Well #28N-26HZ
Project:	WELD-NAD83-UTMFT13N	TVD Reference:	4890'GL+20'KB @ 4910.00usft (PD460)
Site:	GE Powers Pad	MD Reference:	4890'GL+20'KB @ 4910.00usft (PD460)
Well:	#28N-26HZ	North Reference:	True
Wellbore:	Original Hole	Survey Calculation Method:	Minimum Curvature
Design:	Original Hole	Database:	Compass_US

Survey

Measured Depth (usft)	Inclination (°)	Azimuth (°)	Vertical Depth (usft)	+N/S (usft)	+E/W (usft)	Vertical Section (usft)	Dogleg Rate (°/100usft)	Build Rate (°/100usft)	Turn Rate (°/100usft)
8,783.00	89.96	181.55	7,090.91	-1,493.79	1,066.55	1,489.68	0.95	-0.09	0.95
8,876.00	90.13	182.25	7,090.84	-1,586.74	1,063.47	1,582.64	0.77	0.18	0.75
8,969.00	91.80	181.73	7,089.27	-1,679.66	1,060.24	1,675.58	1.88	1.80	-0.56
9,063.00	92.07	181.90	7,086.10	-1,773.56	1,057.26	1,769.49	0.34	0.29	0.18
9,158.00	91.54	181.02	7,083.10	-1,868.48	1,054.85	1,864.42	1.08	-0.56	-0.93
9,253.00	91.71	181.20	7,080.41	-1,963.43	1,053.01	1,959.37	0.26	0.18	0.19
9,348.00	92.15	181.55	7,077.21	-2,058.35	1,050.73	2,054.30	0.59	0.46	0.37
9,443.00	91.19	179.97	7,074.44	-2,153.29	1,049.47	2,149.25	1.95	-1.01	-1.66
9,538.00	91.71	180.50	7,072.04	-2,248.26	1,049.08	2,244.22	0.78	0.55	0.56
9,633.00	91.89	180.32	7,069.05	-2,343.21	1,048.40	2,339.17	0.27	0.19	-0.19
9,727.00	90.57	176.98	7,067.04	-2,437.15	1,050.61	2,433.10	3.82	-1.40	-3.55
9,822.00	88.64	178.21	7,067.69	-2,532.06	1,054.60	2,527.99	2.41	-2.03	1.29
9,915.00	88.02	178.21	7,070.40	-2,624.97	1,057.50	2,620.89	0.67	-0.67	0.00
10,009.00	88.72	178.21	7,073.08	-2,718.89	1,060.44	2,714.79	0.74	0.74	0.00
10,101.00	89.69	178.56	7,074.35	-2,810.84	1,063.03	2,806.74	1.12	1.05	0.38
10,194.00	90.57	178.74	7,074.14	-2,903.81	1,065.22	2,899.70	0.97	0.95	0.19
10,286.00	89.52	179.27	7,074.07	-2,995.80	1,066.82	2,991.68	1.28	-1.14	0.58
10,379.00	90.04	179.79	7,074.43	-3,088.79	1,067.58	3,084.67	0.79	0.56	0.56
10,471.00	90.57	180.14	7,073.94	-3,180.79	1,067.64	3,176.67	0.69	0.58	0.38
10,564.00	91.63	180.50	7,072.15	-3,273.77	1,067.12	3,269.65	1.20	1.14	0.39
10,658.00	90.04	181.55	7,070.78	-3,367.74	1,065.44	3,363.63	2.03	-1.69	1.12
10,752.00	91.01	181.90	7,069.92	-3,461.69	1,062.61	3,457.59	1.10	1.03	0.37
10,845.00	91.63	182.43	7,067.78	-3,554.60	1,059.10	3,550.51	0.88	0.67	0.57
10,938.00	91.89	182.78	7,064.92	-3,647.46	1,054.87	3,643.38	0.47	0.28	0.38
11,030.00	91.01	182.43	7,062.59	-3,739.34	1,050.69	3,735.27	1.03	-0.96	-0.38
11,123.00	91.28	182.61	7,060.73	-3,832.23	1,046.60	3,828.18	0.35	0.29	0.19
11,215.00	90.40	180.85	7,059.39	-3,924.17	1,043.83	3,920.13	2.14	-0.96	-1.91
11,308.00	90.66	181.20	7,058.53	-4,017.15	1,042.16	4,013.12	0.47	0.28	0.38
11,401.00	90.66	181.02	7,057.45	-4,110.13	1,040.36	4,106.10	0.19	0.00	-0.19
11,494.00	91.28	181.02	7,055.88	-4,203.10	1,038.71	4,199.08	0.67	0.67	0.00
11,586.00	89.69	180.32	7,055.10	-4,295.09	1,037.63	4,291.07	1.89	-1.73	-0.76
11,679.00	90.22	179.79	7,055.17	-4,388.09	1,037.54	4,384.07	0.81	0.57	-0.57
11,772.00	90.57	180.50	7,054.53	-4,481.08	1,037.31	4,477.07	0.85	0.38	0.76
11,865.00	90.75	180.50	7,053.46	-4,574.07	1,036.49	4,570.06	0.19	0.19	0.00
11,958.00	91.71	180.32	7,051.46	-4,667.05	1,035.83	4,663.04	1.05	1.03	-0.19
12,051.00	89.16	180.50	7,050.76	-4,760.03	1,035.16	4,756.03	2.75	-2.74	0.19
12,145.00	89.78	181.55	7,051.63	-4,854.01	1,033.48	4,850.01	1.30	0.66	1.12
12,179.00	89.88	181.23	7,051.73	-4,888.00	1,032.66	4,884.00	0.99	0.28	-0.95
Section Line Entry #28N-26HZ Rev1									
12,238.00	90.04	180.67	7,051.77	-4,947.00	1,031.68	4,943.00	0.99	0.28	-0.95
12,332.00	90.75	180.14	7,051.13	-5,040.99	1,031.02	5,036.99	0.94	0.76	-0.56
12,424.00	91.45	180.67	7,049.36	-5,132.97	1,030.37	5,128.98	0.95	0.76	0.58
12,519.00	92.51	181.02	7,046.08	-5,227.90	1,028.97	5,223.91	1.17	1.12	0.37

Precision Drilling Corporation

Survey Report

Company:	US ROCKIES WATTENBERG PLANNING	Local Co-ordinate Reference:	Well #28N-26HZ
Project:	WELD-NAD83-UTMFT13N	TVD Reference:	4890'GL+20'KB @ 4910.00usft (PD460)
Site:	GE Powers Pad	MD Reference:	4890'GL+20'KB @ 4910.00usft (PD460)
Well:	#28N-26HZ	North Reference:	True
Wellbore:	Original Hole	Survey Calculation Method:	Minimum Curvature
Design:	Original Hole	Database:	Compass_US

Survey

Measured Depth (usft)	Inclination (°)	Azimuth (°)	Vertical Depth (usft)	+N/-S (usft)	+E/-W (usft)	Vertical Section (usft)	Dogleg Rate (°/100usft)	Build Rate (°/100usft)	Turn Rate (°/100usft)
12,584.00	92.51	181.02	7,043.23	-5,292.83	1,027.81	5,288.84	0.00	0.00	0.00
BHL #28N-26HZ Rev1									

Design Targets

Target Name	Dip Angle (°)	Dip Dir. (°)	TVD (usft)	+N/-S (usft)	+E/-W (usft)	Northing (usft)	Easting (usft)	Latitude	Longitude
Surface #28N-26HZ - hit/miss target - Shape - actual wellpath hits target center - Point	0.00	0.00	0.00	0.00	0.00	14,574,368.94	1,742,302.01	40.130241°N	104.635497°W
BHL #28N-26HZ Rev1 - actual wellpath hits target center - Point	0.00	0.00	7,043.23	-5,292.83	1,027.81	14,569,080.37	1,743,351.51	40.115707°N	104.631821°W
Land Box Entry #28N - actual wellpath hits target center - Point	0.00	0.00	7,044.58	-69.64	1,057.61	14,574,303.63	1,743,359.90	40.130050°N	104.631714°W
Section Line Entry #2 - actual wellpath hits target center - Point	0.00	0.00	7,051.73	-4,888.00	1,032.66	14,569,485.21	1,743,354.70	40.116818°N	104.631804°W
LP(final) #28N-26HZ I - actual wellpath hits target center - Point	0.00	0.00	7,096.06	-434.35	1,044.59	14,573,938.88	1,743,348.37	40.129048°N	104.631760°W

Design Annotations

Measured Depth (usft)	Vertical Depth (usft)	Local Coordinates +N/-S (usft)	+E/-W (usft)	Comment
7,351.00	7,044.58	-69.64	1,057.61	Land Box Entry Rev1
7,723.00	7,096.06	-434.35	1,044.59	LP Rev1
12,179.00	7,051.73	-4,888.00	1,032.66	Section Line Entry Rev1