



**Photo 1.** Photo taken from southwest location, facing East. Note the Kochia (*Kochia sp.*) and Russian thistle (*Salsola sp.*) in the photo. This is weed debris and will break off and encroach upon adjacent lands. When interim reclamation starts, this area shall be reclaimed and minimized where production or facilities are no longer necessary.



**Photo 2.** Photo taken from southwest location, facing North. Note the Kochia (*Kochia sp.*), Russian thistle (*Salsola sp.*) and Canada thistle (*Cirsium arvense*) in the photo. Weed maintenance is needed to prevent invasion of undesirable species and noxious weeds upon adjacent lands.



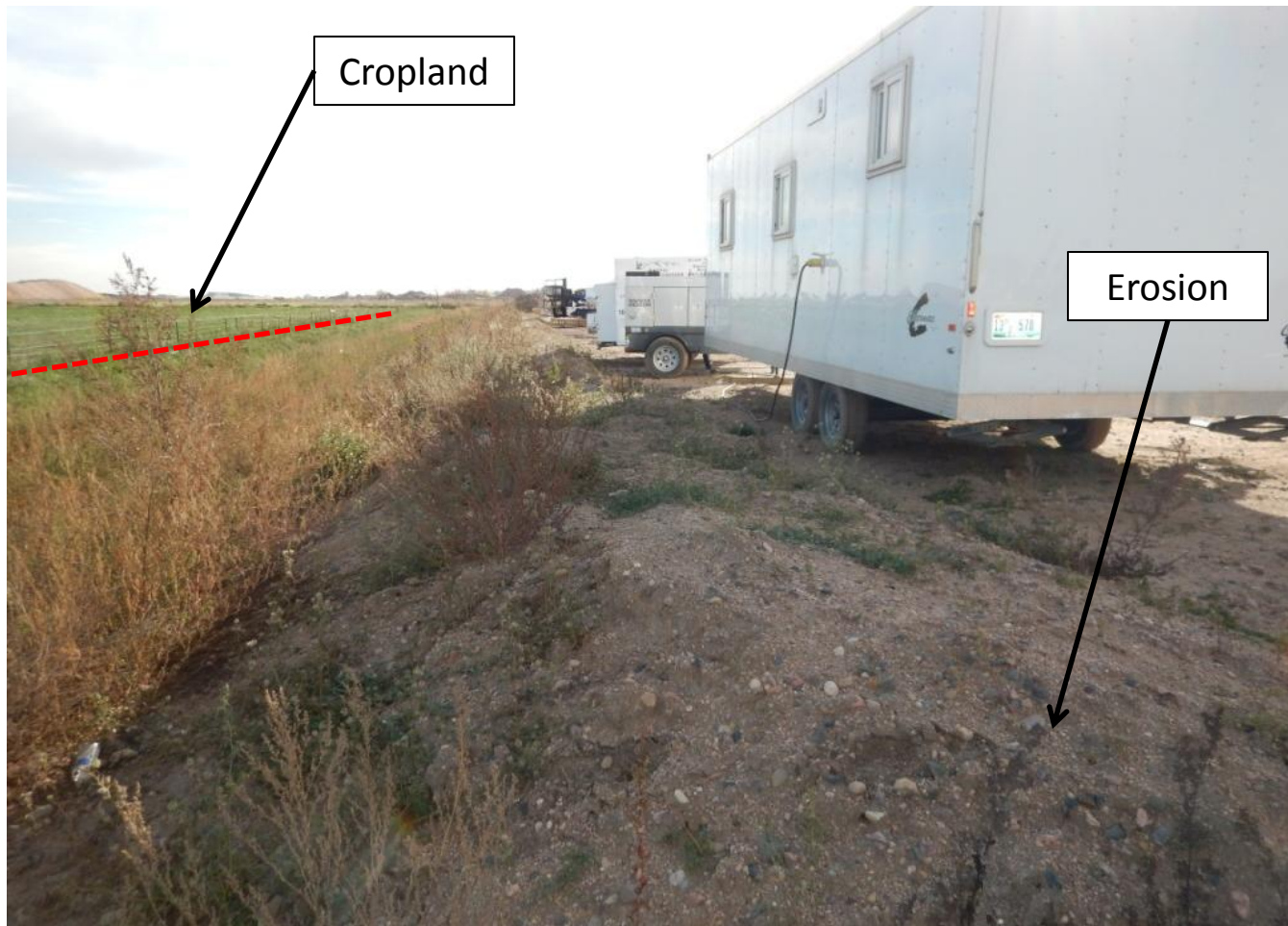


**Photo 3.** Photo taken from southeast location, facing West. Note the Kochia (*Kochia sp.*), Russian thistle (*Salsola sp.*) and Canada thistle (*Cirsium arvense*) in the photo. Weed maintenance is needed.



**Photo 4.** Photo taken from southeast location, facing West. Note the Kochia (*Kochia sp.*), Russian thistle (*Salsola sp.*) and Canada thistle (*Cirsium arvense*) in the photo. Weed maintenance is needed to prevent invasion of undesirable species and noxious weeds upon adjacent lands.





**Photo 5.** Photo taken from northeast location, facing South. Note the Kochia (*Kochia sp.*), Russian thistle (*Salsola sp.*) and Canada thistle (*Cirsium arvense*) in the photo. Weed maintenance is needed to prevent invasion of undesirable species and noxious weeds upon adjacent lands. Production areas need to be stabilized; sediment movement and erosion needs to be controlled.



**Photo 6.** Photo taken from northeast location, facing West. Note the Kochia (*Kochia sp.*) and Russian thistle (*Salsola sp.*) in the photo. Weed maintenance is needed to prevent invasion of undesirable species and noxious weeds upon adjacent lands.





**Photo 7.** Photo taken from northeast location, facing West. Note the Kochia (*Kochia sp.*) and Russian thistle (*Salsola sp.*) in the photo. Weed maintenance is needed to prevent invasion of undesirable species and noxious weeds upon adjacent lands.



**Photo 8.** Photo taken from northeast location, facing West. Note the Kochia (*Kochia* sp.) and Russian thistle (*Salsola* sp.) in the photo. Weed maintenance is needed.





**Photo 9.** Photo taken from central location, facing Southeast. Road base soil pile needs to be removed after drilling completion.

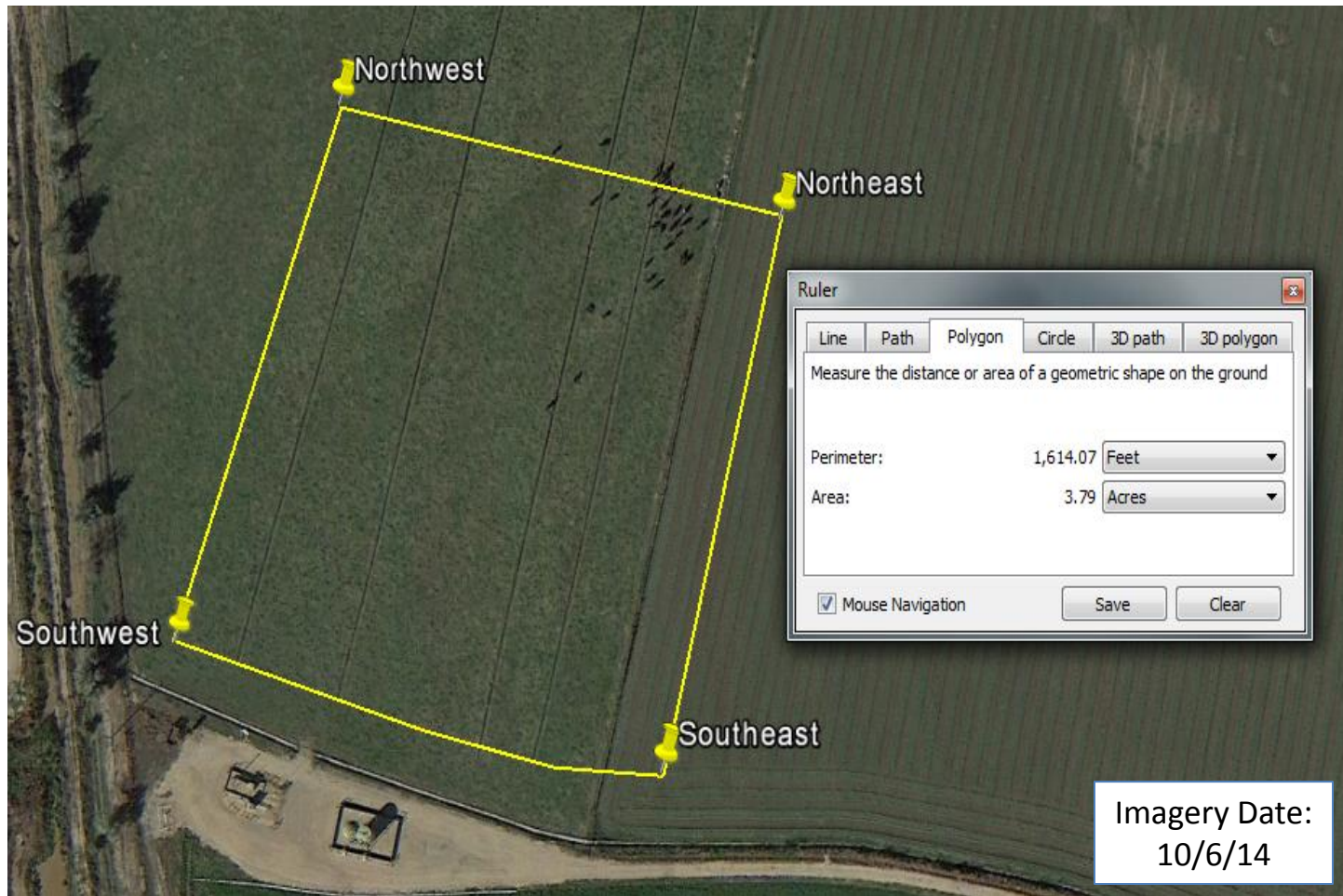


**Photo 10.** Photo taken from south entrance, facing North. When interim reclamation starts, this area shall be reclaimed and minimized where production or facilities are no longer necessary.





**Photo 11.** Musk thistle (*Carduus nutans*) observed throughout location. Weed maintenance is needed to prevent invasion of undesirable species and noxious weeds upon adjacent lands.



**Photo 12.** The perimeter, in yellow, illustrates the disturbance boundary as of 10/29/15. Total disturbance equals 3.79 acres.