

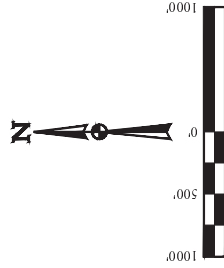
T6N, R67W, 6th P.M.

GREAT WESTERN OPERATING COMPANY
KODAK NORTH FD 27-179HN
SE 1/4 NW 1/4, SECTION 26, 16N, R67W, 6th P.M.
WELD COUNTY, COLORADO

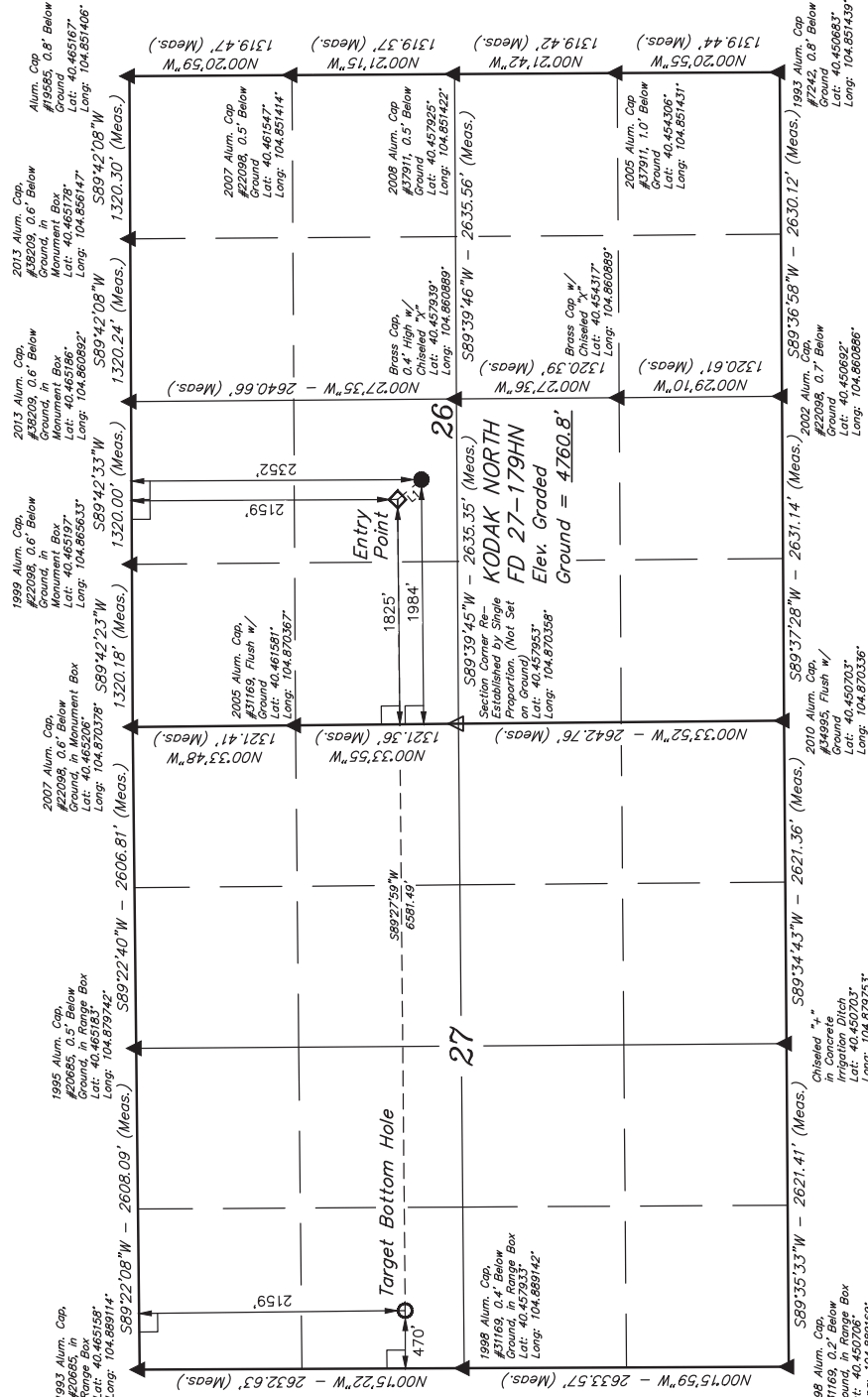
USGS COOPERATIVE BASE NETWORK CONTROL STATION;
DESIGNATION 'VERMILYEA'; NGS DATA SHEET LISTS THE
NAVD 88 ELEVATION AS BEING 3036 FEET

USGS COOPERATIVE BASE NETWORK CONTROL STATION;
DESIGNATION 'VERMILYEA'; NGS DATA SHEET LISTS THE
NAVD 88 ELEVATION AS BEING 3036 FEET

USGS COOPERATIVE BASE NETWORK CONTROL STATION;
DESIGNATION 'VERMILYEA'; NGS DATA SHEET LISTS THE
NAVD 88 ELEVATION AS BEING 3036 FEET



LINE TABLE		
LINE	DIRECTION	LENGTH
L1	N39°52'03"W	250.98'



LEGEND:

- 90° SYMBOL
- PROPOSED WELLHEAD.
- ENTRY POINT.
- TARGET BOTTOM HOLE.
- SECTION CORNERS LOCATED. (NAD 83)
- SECTION CORNERS RE-ESTABLISHED. (Not Set on Ground). (NAD 83)

PDOP = 1.1

NAD 83 (TARGET BOTTOM HOLE)	NAD 83 (ENTRY POINT)	NAD 83 (SURFACE LOCATION)
LATITUDE = 40°27'33.25" (40.459256) LONGITUDE = 104°53'14.81" (104.887447)	LATITUDE = 40°27'33.36" (40.459267) LONGITUDE = 104°51'49.70" (104.863806)	LATITUDE = 40°27'31.45" (40.458736) LONGITUDE = 104°51'47.65" (104.863231)
NAD 27 (TARGET BOTTOM HOLE)	NAD 27 (ENTRY POINT)	NAD 27 (SURFACE LOCATION)
LATITUDE = 40°27'33.32" (40.459256) LONGITUDE = 104°53'12.91" (104.886919)	LATITUDE = 40°27'33.43" (40.459286) LONGITUDE = 104°51'47.80" (104.863278)	LATITUDE = 40°27'31.57" (40.458753) LONGITUDE = 104°51'45.74" (104.862706)



UEL, LLC
Corporate Office # 85 South 200 East
Vernal, UT 84078 • (435) 789-1017

SURVEYED BY: ZANE BULLARD, C.M.	DATE: 10-16-15
DRAWN BY: J.W.	DATE DRAWN: 10-30-13
SCALE: 1" = 1000'	REVISED: 10-20-15 K.B.

WELL LOCATION PLAT



THIS IS TO CERTIFY THAT THE ABOVE SURVEY WAS MADE BY THE SURVEYOR AND THAT THE SAME ARE TRUE AND CORRECT TO THE BEST OF HIS KNOWLEDGE AND BELIEF.

REGISTERED LAND SURVEYOR
STATE OF UTAH
NO. 2838
J.W. BULLARD