



Photo 1. Photo taken from northeast location, facing South. When interim reclamation starts, this area shall be reclaimed and minimized where production or facilities are no longer necessary.



Photo 2. Photo taken from northeast location, facing Southwest. When interim reclamation starts, this area shall be reclaimed and minimized where production or facilities are no longer necessary.



Photo 3. Photo taken from northeast location, facing West. When interim reclamation starts, this area shall be reclaimed and minimized where production or facilities are no longer necessary.



Photo 4. Photo taken from northeast location, facing West. When interim reclamation starts, this area shall be reclaimed and minimized where production or facilities are no longer necessary.



Photo 5. Photo taken from east-facing northwest location, facing South. Perennial vegetation is required for topsoil stabilization.

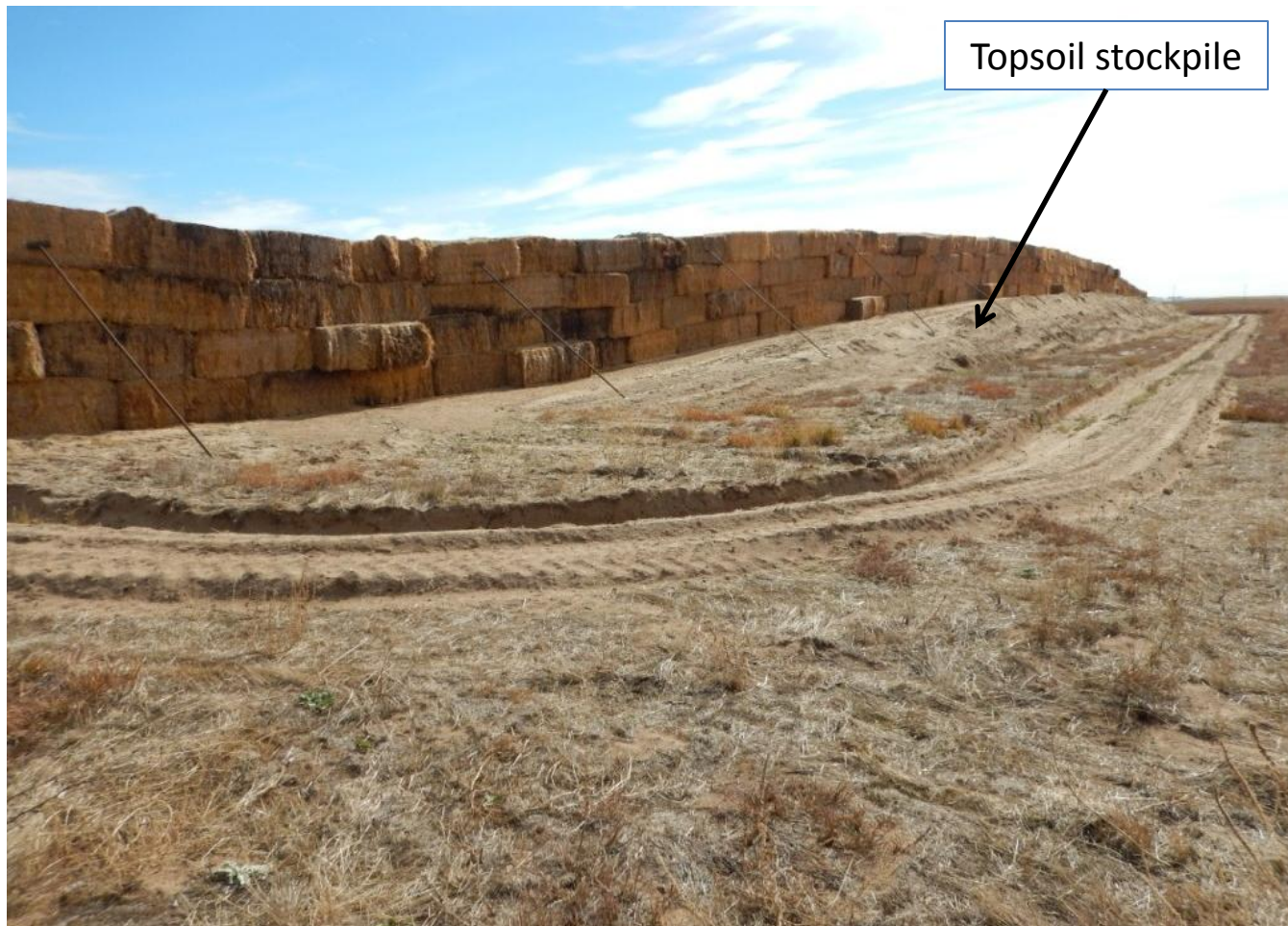


Photo 6. Photo taken from west-facing northwest location, facing South. Perennial vegetation is required for topsoil stabilization.



Photo 7. Photo taken from northwest location, facing East.



Photo 8. Photo taken from southwest location, facing North towards topsoil stockpile.



Photo 9. Photo taken from southwest location, facing East.



Photo 10. Photo taken from southeast location, facing Northwest. When interim reclamation starts, this area shall be reclaimed and minimized where production or facilities are no longer necessary.



Photo 11. Photo taken from southeast location, facing North towards east access entrance.



Photo 12. Photo taken from east location, facing East towards access entrance.



Photo 13. Photo taken from central location, facing North. Road base soil pile needs to be removed.



Photo 14. Photo taken from east location, facing North. Straw pile needs to be removed if no longer being used for operations.

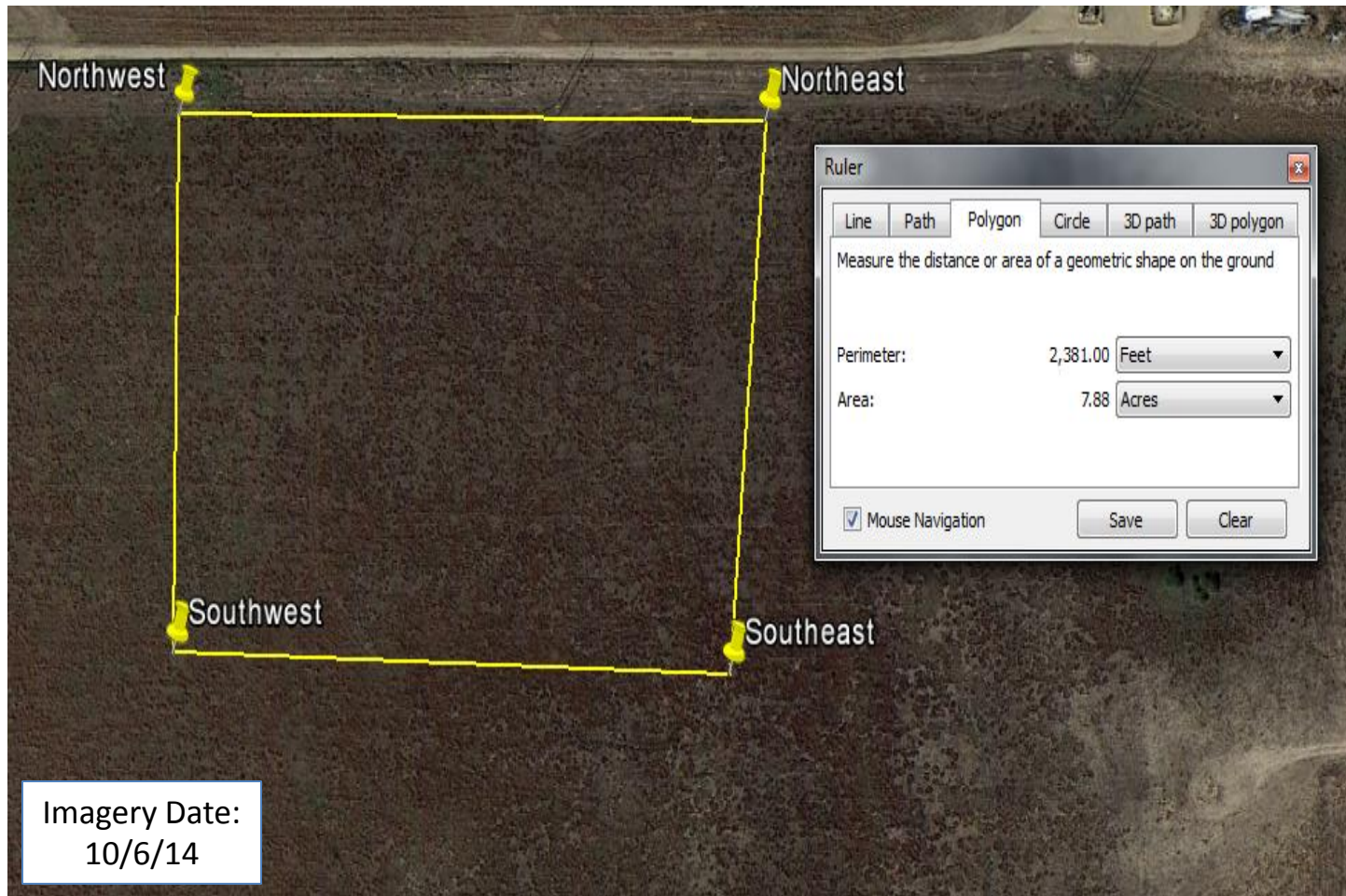


Photo 15. The perimeter, in yellow, illustrates the disturbance boundary as of 10/29/15. Total disturbance equals 7.9 acres which is greater than 5.7 acres stated in the 2A (Doc. #400834427) permitted area.