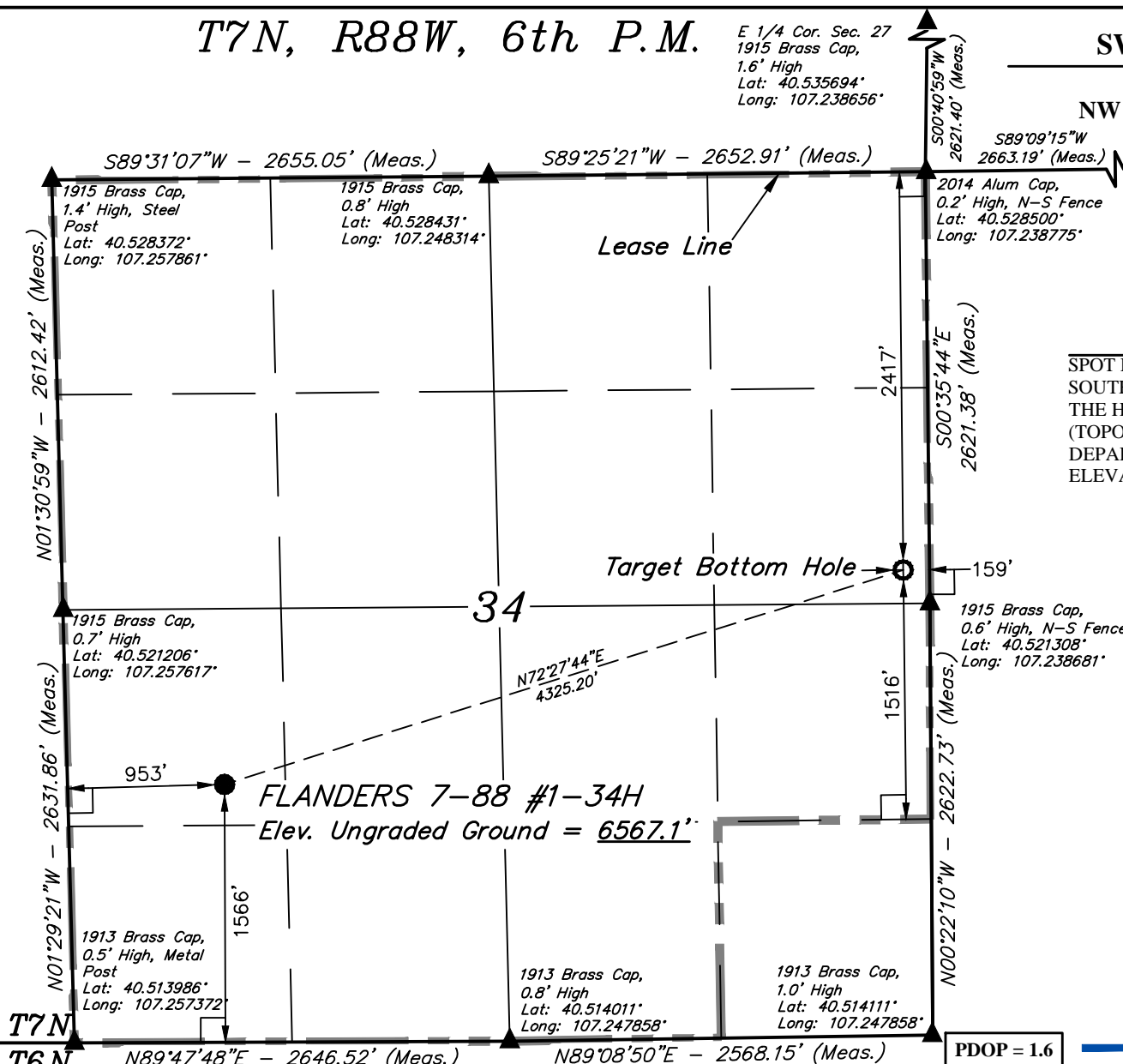


T7N, R88W, 6th P.M.

E 1/4 Cor. Sec. 27
1915 Brass Cap,
1.6' High
Lat: 40.535694°
Long: 107.238656°

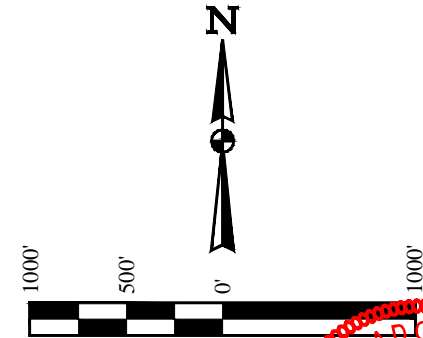
SWN PRODUCTION COMPANY, LLC

FLANDERS 7-88 #1-34H
NW 1/4 SW 1/4 SECTION 34, T7N, R88W, 6th P.M.
ROUTT COUNTY, COLORADO



BASIS OF BEARINGS
BASIS OF BEARINGS IS A G.P.S. OBSERVATION
BASIS OF ELEVATION

SPOT ELEVATION AT A ROAD INTERSECTION LOCATED IN THE SOUTHWEST 1/4 OF SECTION 20, T6N, R88W, 6th P.M. TAKEN FROM THE HAYDEN, QUADRANGLE, COLORADO, 7.5 MINUTE SERIES (TOPOGRAPHIC MAP) PUBLISHED BY THE UNITED STATES DEPARTMENT OF THE INTERIOR, GEOLOGICAL SURVEY. SAID ELEVATION IS MARKED AS BEING 6445 FEET.



CERTIFICATE
THIS IS TO CERTIFY THAT THE ABOVE PLAT WAS PREPARED FROM FIELD NOTES OF ACTUAL SURVEYS MADE BY ME OR UNDER MY SUPERVISION AND THAT THE SAME ARE TRUE AND CORRECT TO THE BEST OF MY KNOWLEDGE AND BELIEF.

Handwritten signature: Harold Marshall
REGISTERED LAND SURVEYOR
REGISTRATION NO. 38130
STATE OF COLORADO
07-16-15

T7N
T6N
PDOP = 1.6

LEGEND:
= 90° SYMBOL
● = PROPOSED WELLHEAD.
○ = TARGET BOTTOM HOLE.
▲ = SECTION CORNERS LOCATED.

NAD 83 (TARGET BOTTOM HOLE)	NAD 83 (SURFACE LOCATION)
LATITUDE = 40°31'18.71" (40.521864)	LATITUDE = 40°31'05.85" (40.518292)
LONGITUDE = 107°14'21.34" (107.239261)	LONGITUDE = 107°15'14.73" (107.254092)
NAD 27 (TARGET BOTTOM HOLE)	NAD 27 (SURFACE LOCATION)
LATITUDE = 40°31'18.81" (40.521892)	LATITUDE = 40°31'05.95" (40.518319)
LONGITUDE = 107°14'19.13" (107.238647)	LONGITUDE = 107°15'12.52" (107.253478)
STATE PLANE NAD 83 (COLO. NORTH)	STATE PLANE NAD 83 (COLO. NORTH)
N: 1437697.51 E: 2516499.71	N: 1436478.00 E: 2512351.51
STATE PLANE NAD 27 (COLO. NORTH)	STATE PLANE NAD 27 (COLO. NORTH)
N: 437696.20 E: 1516657.60	N: 436476.71 E: 1512509.40



UELS, LLC
Corporate Office * 85 South 200 East
Vernal, UT 84078 * (435) 789-1017

SURVEYED BY: NATHAN FISHER, B.O.	DATE: 10-29-14
DRAWN BY: A.R.	DATE DRAWN: 12-22-14
SCALE: 1" = 1000'	REVISED: 07-16-15 C.D.L.

WELL LOCATION PLAT