



Photo 1. Photo taken from south entrance, facing North.



Photo 2. Photo taken from southeast location, facing West. Need to reclaim and minimize areas where production or facilities are no longer necessary.



Photo 3. Photo taken from southeast location, facing North. Need to reclaim and minimize areas where production or facilities are no longer necessary.



Photo 4. Photo taken from southeast corner of well pad, facing North. Need to reclaim and minimize areas where production or facilities are no longer necessary.



Photo 5. Photo taken from southeast corner of well pad, facing West. Need to reclaim and minimize areas where production or facilities are no longer necessary.

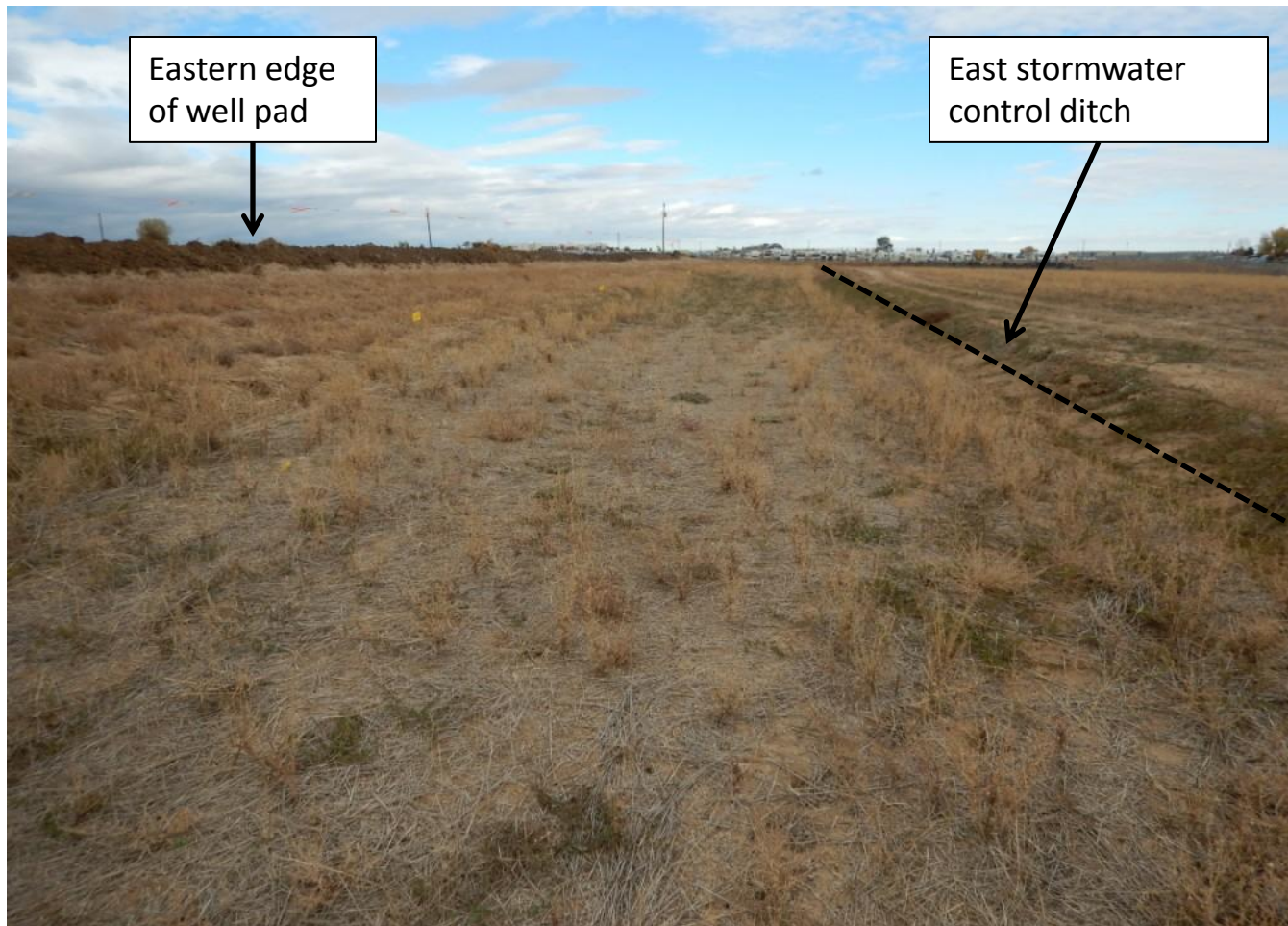


Photo 6. Photo taken from east location, facing North. Need to reclaim and minimize areas where production or facilities are no longer necessary.



Photo 7. Photo taken from northeast corner of well pad, facing West. Need to reclaim and minimize areas where production or facilities are no longer necessary.



Photo 8. Photo taken from northeast corner of well pad, facing South. Need to reclaim and minimize areas where production or facilities are no longer necessary.



Photo 9. Photo taken from northeast location, facing West. Need to reclaim and minimize areas where production or facilities are no longer necessary.



Photo 10. Photo taken from northwest corner of well pad, facing South. Perennial vegetation is required for topsoil stabilization. Need to reclaim and minimize areas where production or facilities are no longer necessary.



Photo 11. Photo taken from northwest corner of well pad, facing East. Need to reclaim and minimize areas where production or facilities are no longer necessary.



Photo 12. Photo taken from southwest corner of well pad, facing East. Need to reclaim and minimize areas where production or facilities are no longer necessary.



Photo 13. Photo taken from northwest corner of well pad, facing Southeast. Note the pooling of water in central well pad area.



Photo 14. Photo taken from southwest corner of well pad, facing North. Perennial vegetation needs to be seeded on all berms and topsoil stockpiles. Topsoil stockpile lacks vegetative growth and cover at time of this current inspection.



Photo 15. Musk thistle (*Carduus nutans*) observed throughout location. Weed maintenance is needed.



Photo 16. Canada thistle (*Cirsium arvense*) observed throughout location. Weed maintenance is needed.



Photo 17. Photo taken from northwest location. Debris leftover needs to be removed.

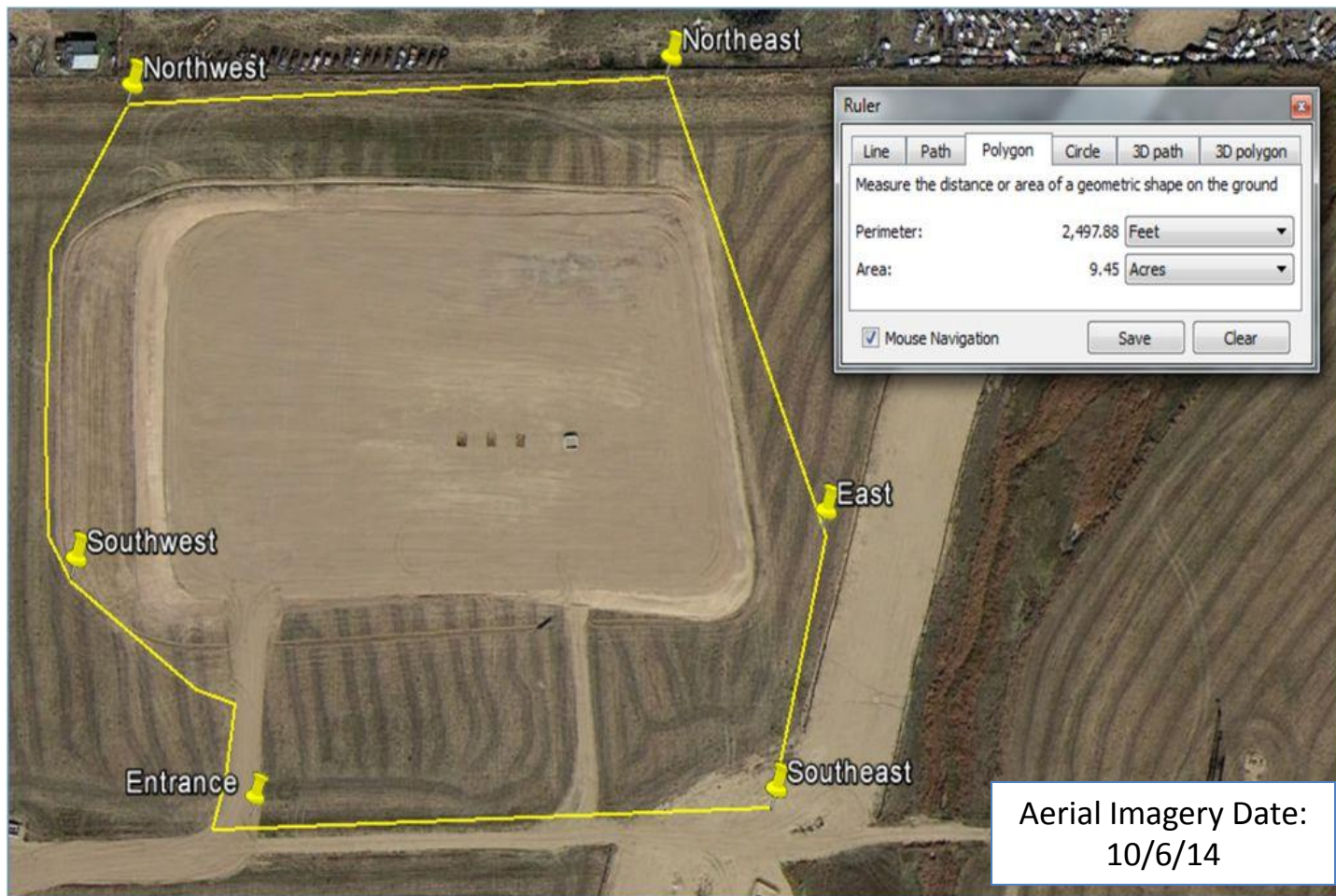


Photo 18. The perimeter, in yellow, illustrates the disturbance boundary as of 10/30/15. Total disturbance equals 9.45 acres.