



H & H Wireline Service Inc

05-067-06894

P.O. Box 899
Flora Vista NM 87415

Phone: 505-327-2364
Fax: 505-334-5438
E-mail: h-wireline@gobrainstorm.net

Pressure Test Report

COMPANY INFORMATION

Company Name	CHEVRON
Representative	DANNY MONTOYA
Phone	
Fax	
Address	

E-Mail Address	
Service Company	H & H WIRELINE SERVICE INC.

WELL INFORMATION

Well Name	DAY-V-RANCH # 1-35
Well Location	
Field and Pool	FRUITLAND COAL
Status (Oil, Gas, Water, Injection)	GAS
Perforated Intervals	
Mid-point of Perforated Intervals (MPP)	
Drilling Rig Number	
Elevations	
Kelly Bushing (KB)	
Casing Flange (CF)	
KB-CF	
Ground Level	
Plug Back Total Depth	
Total Depth	
Production Casing	
Production Tubing	2.875

TEST INFORMATION

Type of Test	STATIC GRADIENT
Date(s) of Test	07/03/2014
Dead-weight Gauge Tubing Pressure	726
Dead-weight Gauge Casing Pressure	
Shut-in Date (Duration)	
Date / Time on Bottom	07/03/2014 @ 9:49 AM
Date / Time off Bottom	07/03/2014 @ 9:54 AM

Probe Serial Number	
Probe Offset from End of Tool String	
Run Depth at Probe Pressure Port	1969'GL

PRESSURE TEST RESULTS

Maximum Recorded Probe Pressure	757.8 psig
Maximum Recorded Probe Temperature	92.4 deg F
Final Buildup Pressure	757.8
Gradient Survey Information	
Extrapolated Pressure to MPP	
Final Gradient at Depth	1969'GL
Job Number	

Pressure Test Report

COMPANY INFORMATION

Company Name	CHEVRON
Representative	DANNY MONTOYA
Phone	
Fax	
Address	

E-Mail Address	
Service Company	H & H WIRELINE SERVICE INC.

WELL INFORMATION

Well Name	DAY-V-RANCH # 1-35
Well Location	
Field and Pool	FRUITLAND COAL
Status (Oil, Gas, Water, Injection)	GAS
Perforated Intervals	
Mid-point of Perforated Intervals (MPP)	
Drilling Rig Number	
Elevations	
Kelly Bushing (KB)	
Casing Flange (CF)	
KB-CF	
Ground Level	
Plug Back Total Depth	
Total Depth	
Production Casing	
Production Tubing	2.875

TEST INFORMATION

Type of Test	STATIC GRADIENT
Date(s) of Test	07/03/2014
Dead-weight Gauge Tubing Pressure	726
Dead-weight Gauge Casing Pressure	
Shut-in Date (Duration)	
Date / Time on Bottom	07/03/2014 @ 9:49 AM
Date / Time off Bottom	07/03/2014 @ 9:54 AM

Probe Serial Number	
Probe Offset from End of Tool String	
Run Depth at Probe Pressure Port	1969'GL

PRESSURE TEST RESULTS

Maximum Recorded Probe Pressure	757.8 psig
Maximum Recorded Probe Temperature	92.4 deg F
Final Buildup Pressure	757.8
Gradient Survey Information	
Extrapolated Pressure to MPP	
Final Gradient at Depth	1969'GL
Job Number	



Company Name CHEVRON
Well Name DAY-V-RANCH # 1-35
Type of Test STATIC GRADIENT
Date(s) of Test 07/03/2014

PROBE INFORMATION

Probe Serial Number

Model

Pressure

Calibrated Pressure Range

Accuracy

Resolution

Temperature

Calibrated Temperature Range

Accuracy

Resolution

Calibration File Used for Reports

PROGRAMMING DETAILS

<u>Step</u>	<u>Sample Mode</u>	<u>Period</u>	<u>Duration</u>	<u>Comment</u>
-------------	--------------------	---------------	-----------------	----------------

Program Start Time

Program End Time

Total Samples Taken

Usage for this Test

Generic Data File Name



Company Name	CHEVRON
Well Name	DAY-V-RANCH # 1-35
Type of Test	STATIC GRADIENT
Date(s) of Test	07/03/2014

COMMENTS

Reported By

H & H WIRELINE SERVICE INC.

RUN BHP SURVEY TO 1969'GL, POOH RIG DOWN DRIVE TO NEXT LOCATION.



Company Name CHEVRON
Well Name DAY-V-RANCH # 1-35
Type of Test STATIC GRADIENT
Date(s) of Test 07/03/2014

Pressure vs. Depth

Probe Serial Number

Stop Time From	Stop Time To	Depth (ft)	Pressure (psig)	Gradient (psi/ft)	(deg F)	(deg F/ft)
9:30	9:35	0.000	726.066	-	82.598	-
9:37	9:42	1000.000	743.672	0.0176	69.494	-0.0131
9:43	9:48	1500.000	750.506	0.0137	75.776	0.0126
9:49	9:54	1969.000	757.549	0.0150	84.056	0.0177

Extrapolated to MPP:

Depth
(ft)

Pressure
(psig)

(deg F)

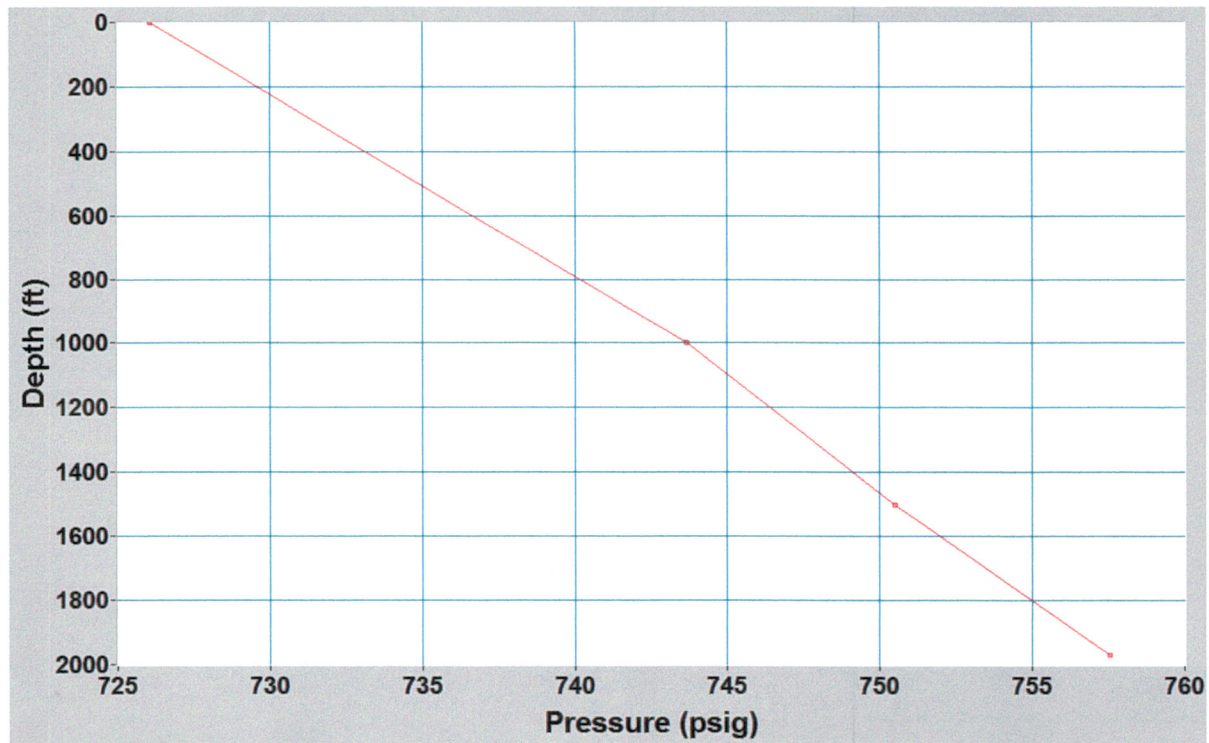
0.000



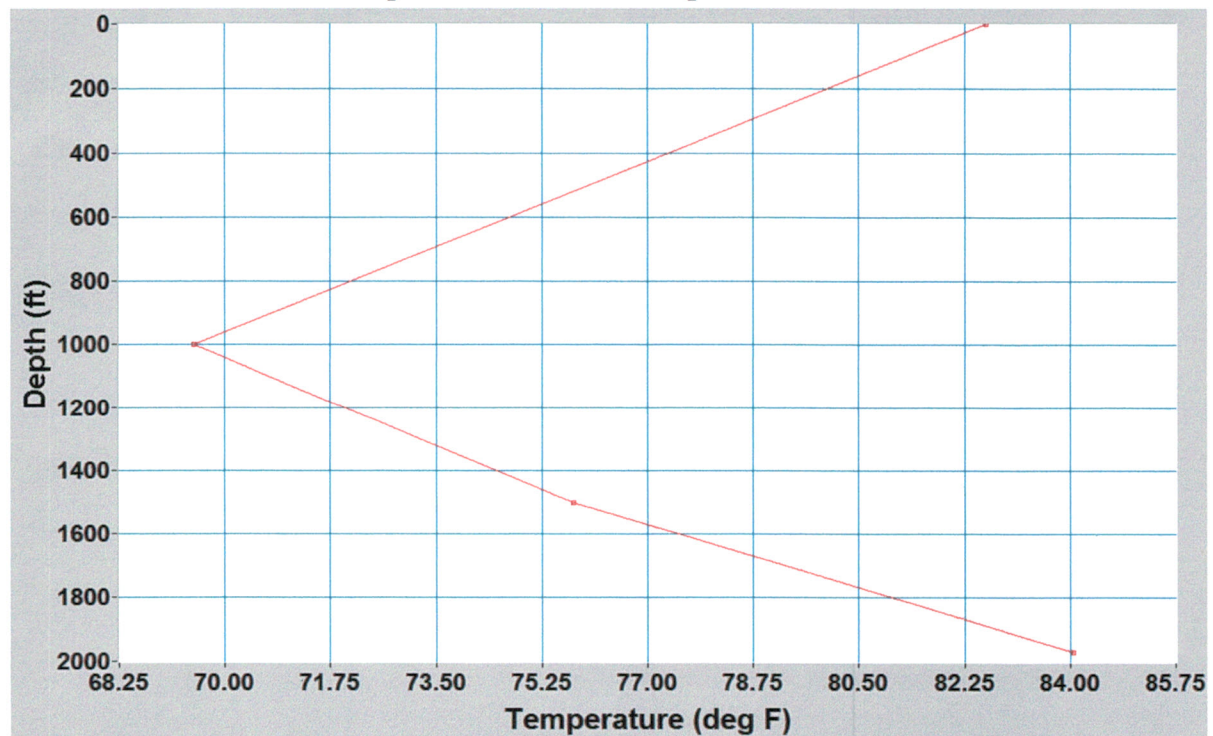
Company Name CHEVRON
Well Name DAY-V-RANCH # 1-35
Type of Test STATIC GRADIENT
Date(s) of Test 07/03/2014

Probe Serial Number

Depth vs. Pressure



Depth vs. Temperature

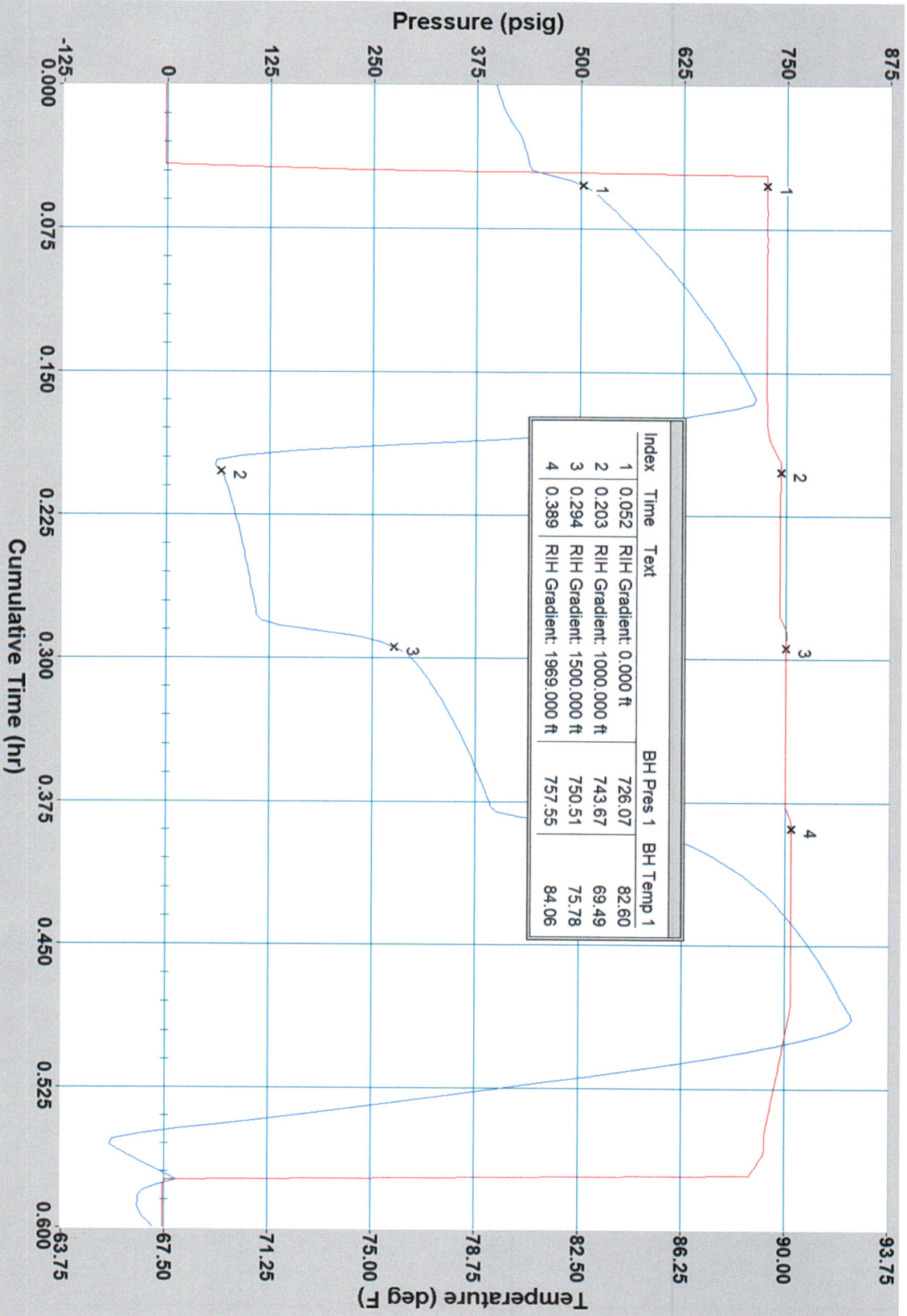




Company Name
Well Name
Type of Test
Date(s) of Test

CHEVRON
DAY-V-RANCH # 1-35
STATIC GRADIENT
07/03/2014

DAY-V-RANCH # 1-35



BH Pres 1
BH Temp 1



Company Name CHEVRON
Well Name DAY-V-RANCH # 1-35
Type of Test STATIC GRADIENT
Date(s) of Test 07/03/2014

Date	Time	Cum.Time BH1	BH Pres 1	BH Temp 1
		hr	psig	deg F
2012/06/27	14:10:00	0.0000	-1.955	79.448
2012/06/27	14:10:39	0.0108	-1.946	79.682
2012/06/27	14:11:09	0.0192	-1.939	79.988
2012/06/27	14:11:29	0.0247	-2.057	80.240
2012/06/27	14:12:09	0.0358	-2.045	80.546
2012/06/27	14:12:39	0.0442	233.518	80.726
2012/06/27	14:12:59	0.0497	726.072	82.112
RIH Gradient: 0.000 ft				
2012/06/27	14:13:09	0.0525	726.066	82.598
2012/06/27	14:13:29	0.0581	726.169	83.174
2012/06/27	14:14:09	0.0692	726.316	84.002
2012/06/27	14:14:39	0.0775	726.289	84.578
2012/06/27	14:15:09	0.0858	726.358	85.136
2012/06/27	14:15:39	0.0942	726.307	85.640
2012/06/27	14:15:59	0.0997	726.307	85.982
2012/06/27	14:16:39	0.1108	726.291	86.612
2012/06/27	14:17:09	0.1192	726.234	87.026
2012/06/27	14:17:29	0.1247	726.275	87.314
2012/06/27	14:17:59	0.1331	726.266	87.710
2012/06/27	14:18:39	0.1442	726.214	88.178
2012/06/27	14:19:09	0.1525	726.175	88.484
2012/06/27	14:19:39	0.1608	726.131	88.790
2012/06/27	14:20:09	0.1692	726.459	88.070
2012/06/27	14:20:29	0.1747	726.883	85.964
2012/06/27	14:21:09	0.1858	730.300	79.340
2012/06/27	14:21:39	0.1942	740.229	70.268
2012/06/27	14:21:59	0.1997	744.029	69.296
RIH Gradient: 1000.000 ft				
2012/06/27	14:22:09	0.2025	743.672	69.494
2012/06/27	14:22:29	0.2081	743.286	69.656
2012/06/27	14:23:09	0.2192	743.030	69.908
2012/06/27	14:23:39	0.2275	742.949	70.052
2012/06/27	14:23:59	0.2331	742.878	70.160
2012/06/27	14:24:39	0.2442	742.828	70.340
2012/06/27	14:25:09	0.2525	742.767	70.448
2012/06/27	14:25:29	0.2581	742.716	70.538
2012/06/27	14:25:59	0.2664	742.682	70.646
2012/06/27	14:26:39	0.2775	743.070	70.772
2012/06/27	14:27:09	0.2858	750.949	73.094
2012/06/27	14:27:29	0.2914	750.512	75.308
RIH Gradient: 1500.000 ft				
2012/06/27	14:27:39	0.2942	750.506	75.776
2012/06/27	14:28:09	0.3025	750.530	76.550
2012/06/27	14:28:39	0.3108	750.553	77.018
2012/06/27	14:29:09	0.3192	750.518	77.396
2012/06/27	14:29:39	0.3275	750.524	77.738
2012/06/27	14:29:59	0.3331	750.498	77.954
2012/06/27	14:30:29	0.3414	750.473	78.260
2012/06/27	14:31:09	0.3525	750.430	78.620
2012/06/27	14:31:39	0.3608	750.392	78.854
2012/06/27	14:31:59	0.3664	750.393	79.016
2012/06/27	14:32:39	0.3775	750.469	79.304
2012/06/27	14:33:09	0.3858	757.812	82.220
RIH Gradient: 1969.000 ft				

Date	Time	Cum.Time BH1	BH Pres 1	BH Temp 1
		hr	psig	deg F
2012/06/27	14:33:19	0.3886	757.549	84.056
2012/06/27	14:33:39	0.3942	757.374	85.874
2012/06/27	14:34:09	0.4025	757.435	87.242
2012/06/27	14:34:29	0.4081	757.462	87.890
2012/06/27	14:34:59	0.4164	757.471	88.718
2012/06/27	14:35:39	0.4275	757.444	89.582
2012/06/27	14:36:09	0.4358	757.455	90.086
2012/06/27	14:36:29	0.4414	757.423	90.410
2012/06/27	14:37:09	0.4525	757.383	90.986
2012/06/27	14:37:39	0.4608	757.367	91.382
2012/06/27	14:38:09	0.4692	757.361	91.742
2012/06/27	14:38:39	0.4775	757.323	92.030
2012/06/27	14:38:59	0.4831	756.598	92.264
2012/06/27	14:39:29	0.4914	752.708	92.246
2012/06/27	14:40:09	0.5025	747.713	89.654
2012/06/27	14:40:39	0.5108	743.923	86.486
2012/06/27	14:40:59	0.5164	741.402	83.984
2012/06/27	14:41:39	0.5275	736.048	78.512
2012/06/27	14:42:09	0.5358	732.014	74.192
2012/06/27	14:42:29	0.5414	729.192	71.168
2012/06/27	14:42:59	0.5497	726.218	66.578
2012/06/27	14:43:39	0.5608	723.734	66.092
2012/06/27	14:44:09	0.5692	711.352	67.208
2012/06/27	14:44:29	0.5747	1.038	67.928
2012/06/27	14:45:09	0.5858	-1.842	66.542
2012/06/27	14:45:39	0.5942	-1.801	66.722