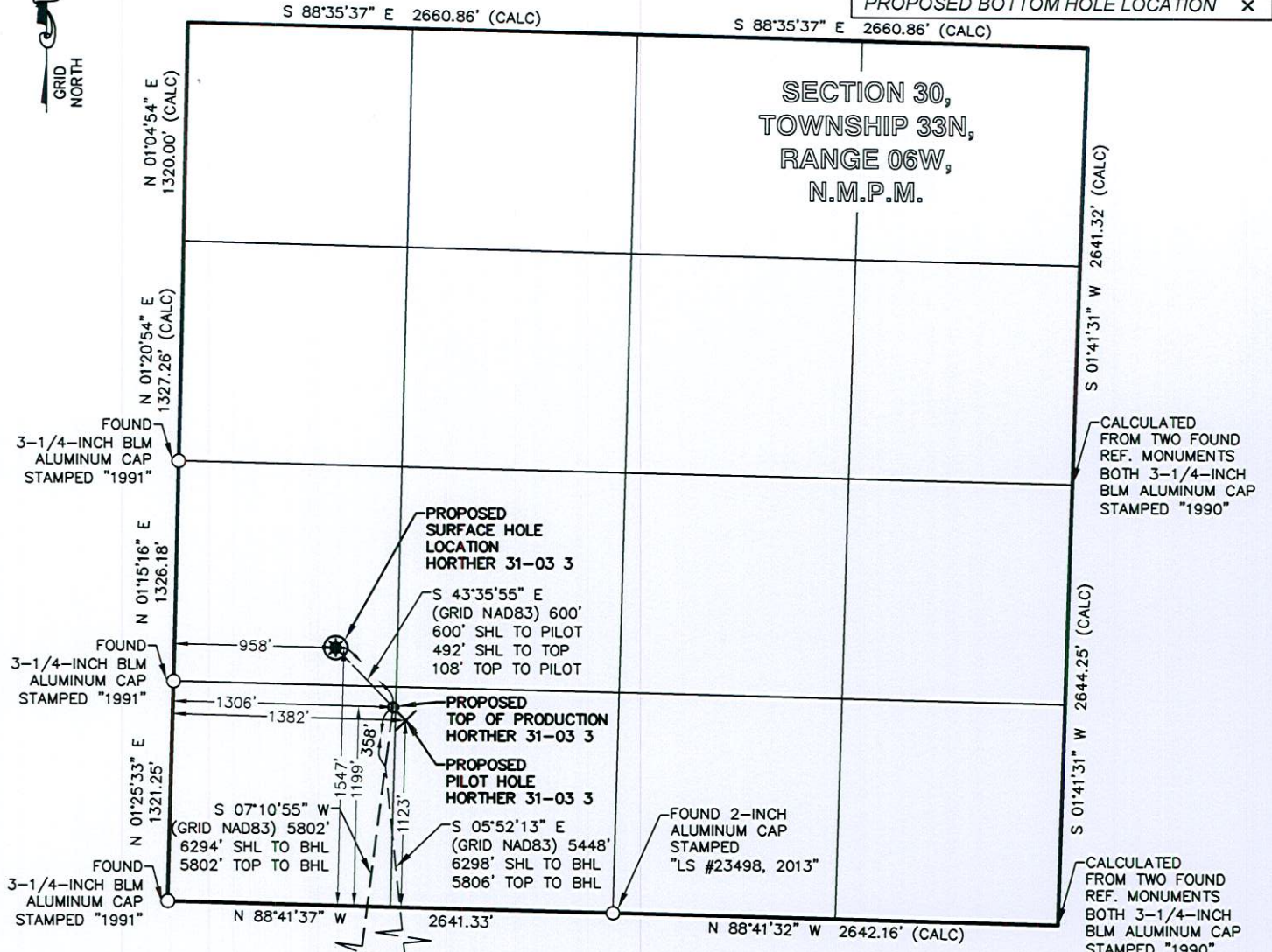


**LEGEND**  
FOUND MONUMENT O  
PROPOSED SURFACE HOLE LOCATION \*  
PROPOSED BOTTOM HOLE LOCATION x



HORTNER 31-03 3	CSZ NAD'83	NAD'83	TIES	ELEVATION
PROPOSED SURFACE HOLE LOCATION (SHL)	N (Y) = 1,154,134.88' E (X) = 2,402,640.03'	LAT. = 37.07198980°N LON. = 107.54755380°W	FSL = 1547' FWL = 958'	EXISTING GROUND 6469.36'
PROPOSED TOP OF PRODUCTION (TOP)	N (Y) = 1,153,778.67' E (X) = 2,402,979.23'	LAT. = 37.07103216°N LON. = 107.54636477°W	FSL = 1199' FWL = 1306'	PROPOSED GRADE 6469.21'
PROPOSED PILOT HOLE	N (Y) = 1,153,700.37' E (X) = 2,403,053.79'	LAT. = 37.07082166°N LON. = 107.54610341°W	FSL = 1123' FWL = 1382'	
PROPOSED BOTTOM HOLE LOCATION (BHL) LAT 1	N (Y) = 1,148,021.92' E (X) = 2,402,253.81'	LAT. = 37.05518208°N LON. = 107.54841780°W	FSL = 718' FWL = 715'	
PROPOSED BOTTOM HOLE LOCATION (BHL) LAT 1 ST 1	N (Y) = 1,148,003.70' E (X) = 2,403,491.76'	LAT. = 37.05520653°N LON. = 107.54417546°W	FSL = 713' FWL = 1954'	
PROPOSED BOTTOM HOLE LOCATION (BHL) LAT 2	N (Y) = 1,148,021.92' E (X) = 2,402,253.81'	LAT. = 37.05518208°N LON. = 107.54841780°W	FSL = 718' FWL = 715'	
PROPOSED BOTTOM HOLE LOCATION (BHL) LAT 2 ST 1	N (Y) = 1,148,003.70' E (X) = 2,403,491.76'	LAT. = 37.05520653°N LON. = 107.54417546°W	FSL = 713' FWL = 1954'	

**SURVEY NOTES**


1. BEARING BASIS FOR THIS SURVEY IS BASED ON THE NORTH AMERICAN DATUM OF 1983, COLORADO STATE PLANE COORDINATE SYSTEM, COLORADO SOUTH, ZONE 0503.
2. ELEVATION BASIS FOR THIS SURVEY IS BASED ON THE NORTH AMERICAN VERTICAL DATUM OF 1988 (GEOID12A).
3. SURVEYED IN THE FIELD ON 08/12/2015.
4. BEARINGS AND DISTANCE SHOWN ARE MEASURED IN THE FIELD UNLESS OTHERWISE NOTED.
5. ALL MEASURED DISTANCES SHOWN ARE GRID USING A COMBINED SCALE FACTOR 0.99972724.
6. GPS INSTRUMENT OPERATOR: RYAN BARTHEL
7. GPS PDOP VALUE: 1.5

**SURVEYOR'S CERTIFICATE**

I, ROBERT L. TRUDEAUX, A PROFESSIONAL LAND SURVEYOR IN THE STATE OF COLORADO, DO HEREBY CERTIFY THAT THIS PLAT WAS PREPARED FROM AN ACTUAL SURVEY PERFORMED BY ME OR UNDER MY DIRECT RESPONSIBILITY, SUPERVISION AND CHECKING, AND IS TRUE AND CORRECT TO THE BEST OF MY KNOWLEDGE AND BELIEF BASED ON THE STANDARDS OF CARE OF PROFESSIONAL LAND SURVEYORS PRACTICING IN THE STATE OF COLORADO. THIS DOES NOT REPRESENT A LAND SURVEY PLAT, IMPROVEMENT SURVEY PLAT, OR MONUMENT PLAT. A LAND SURVEY AS DEFINED BY COLORADO REVISED STATUTES 38-51-102 AND CANNOT BE RELIED UPON TO DETERMINE OWNERSHIP. THIS SURVEY IS NOT A GUARANTY OR WARRANTY, EITHER EXPRESSED OR IMPLIED.



DRAWN BY CFW/RLM	CHECKED BY RLT	SCALE 1"=1000'	DATE 10/05/2015	1 OF 2	REVISION
---------------------	-------------------	-------------------	--------------------	--------	----------

 **BP AMERICA**  
PRODUCTION COMPANY  
US LOWER 48 ONSHORE

**WELL LOCATION PLAT**

**HORTNER 31-03 3**  
PART OF  
SECTION 30 AND 31, TOWNSHIP 33N, RANGE  
06W, N.M.P.M.  
LA PLATA COUNTY, COLORADO

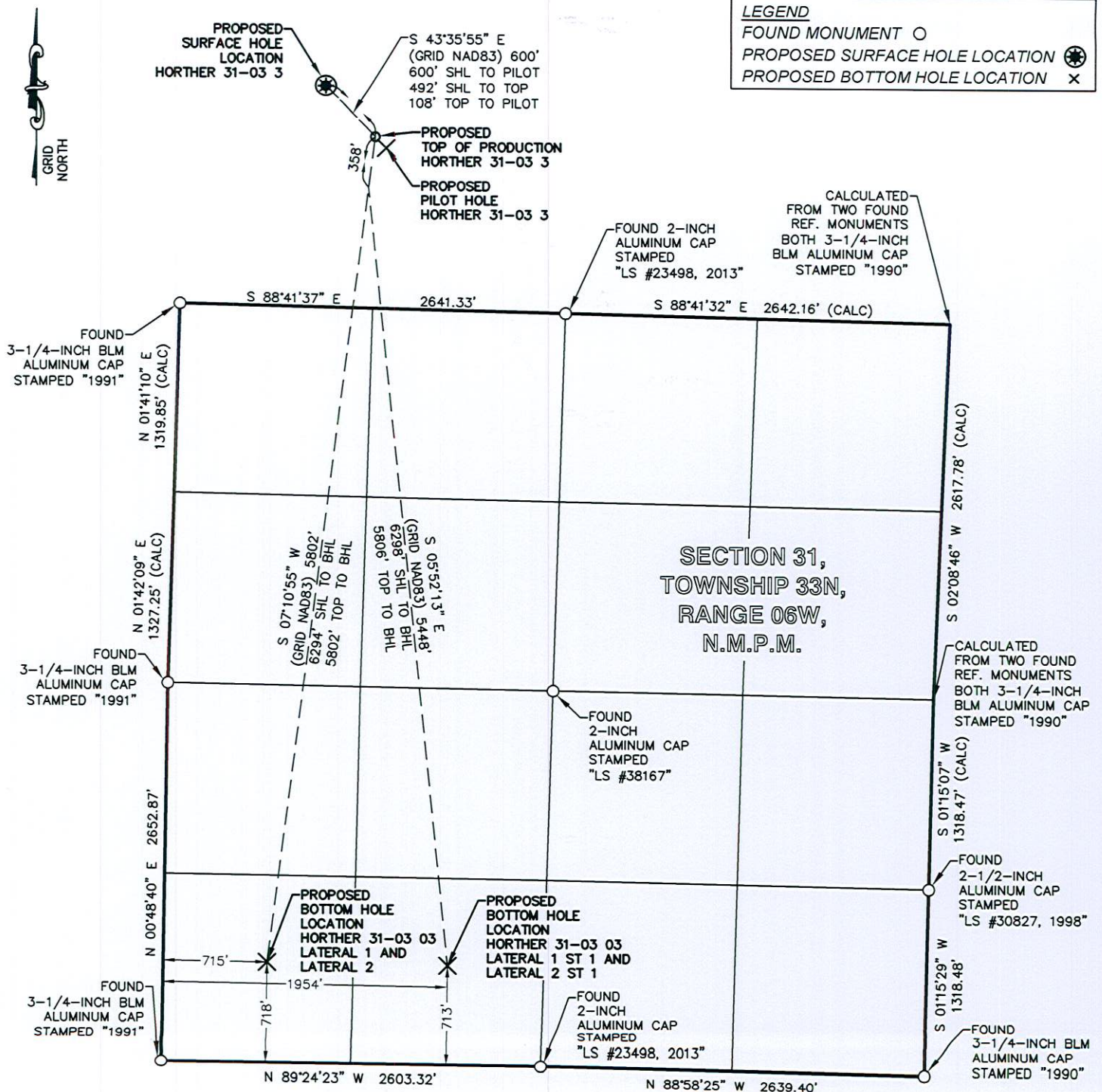


# LEGEND

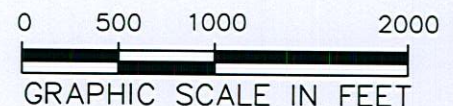
FOUND MONUMENT O

PROPOSED SURFACE HOLE LOCATION \*

PROPOSED BOTTOM HOLE LOCATION x



HORTHER 31-03 3	CSZ NAD'83	NAD'83	TIES	ELEVATION
PROPOSED SURFACE HOLE LOCATION (SHL)	N (Y) = 1,154,134.88' E (X) = 2,402,640.03'	LAT. = 37.07198980°N LON. = 107.54755380°W	FSL = 1547' FWL = 958'	EXISTING GROUND 6469.36'
PROPOSED TOP OF PRODUCTION (TOP)	N (Y) = 1,153,778.67' E (X) = 2,402,979.23'	LAT. = 37.07103216°N LON. = 107.54636477°W	FSL = 1199' FWL = 1306'	PROPOSED GRADE 6469.21'
PROPOSED PILOT HOLE	N (Y) = 1,153,700.37' E (X) = 2,403,053.79'	LAT. = 37.07082166°N LON. = 107.54610341°W	FSL = 1123' FWL = 1382'	
PROPOSED BOTTOM HOLE LOCATION (BHL) LAT 1	N (Y) = 1,148,021.92' E (X) = 2,402,253.81'	LAT. = 37.05518208°N LON. = 107.54841780°W	FSL = 718' FWL = 715'	
PROPOSED BOTTOM HOLE LOCATION (BHL) LAT 1 ST 1	N (Y) = 1,148,003.70' E (X) = 2,403,491.76'	LAT. = 37.05520653°N LON. = 107.54417546°W	FSL = 713' FWL = 1954'	
PROPOSED BOTTOM HOLE LOCATION (BHL) LAT 2	N (Y) = 1,148,021.92' E (X) = 2,402,253.81'	LAT. = 37.05518208°N LON. = 107.54841780°W	FSL = 718' FWL = 715'	
PROPOSED BOTTOM HOLE LOCATION (BHL) LAT 2 ST 1	N (Y) = 1,148,003.70' E (X) = 2,403,491.76'	LAT. = 37.05520653°N LON. = 107.54417546°W	FSL = 713' FWL = 1954'	



BP AMERICA  
PRODUCTION COMPANY  
US LOWER 48 ONSHORE

**WELL LOCATION PLAT**

**HORTHER 31-03 3**

PART OF  
SECTION 30 AND 31, TOWNSHIP 33N, RANGE  
06W, N.M.P.M.  
LA PLATA COUNTY, COLORADO

DRAWN BY CFW/RLM	CHECKED BY RLT	SCALE 1"=1000'	DATE 10/05/2015	SHEET 2 OF 2	REVISION
---------------------	-------------------	-------------------	--------------------	-----------------	----------