

Bayswater Exploration & Production, LLC

Well Name: **Walton G-25HN**

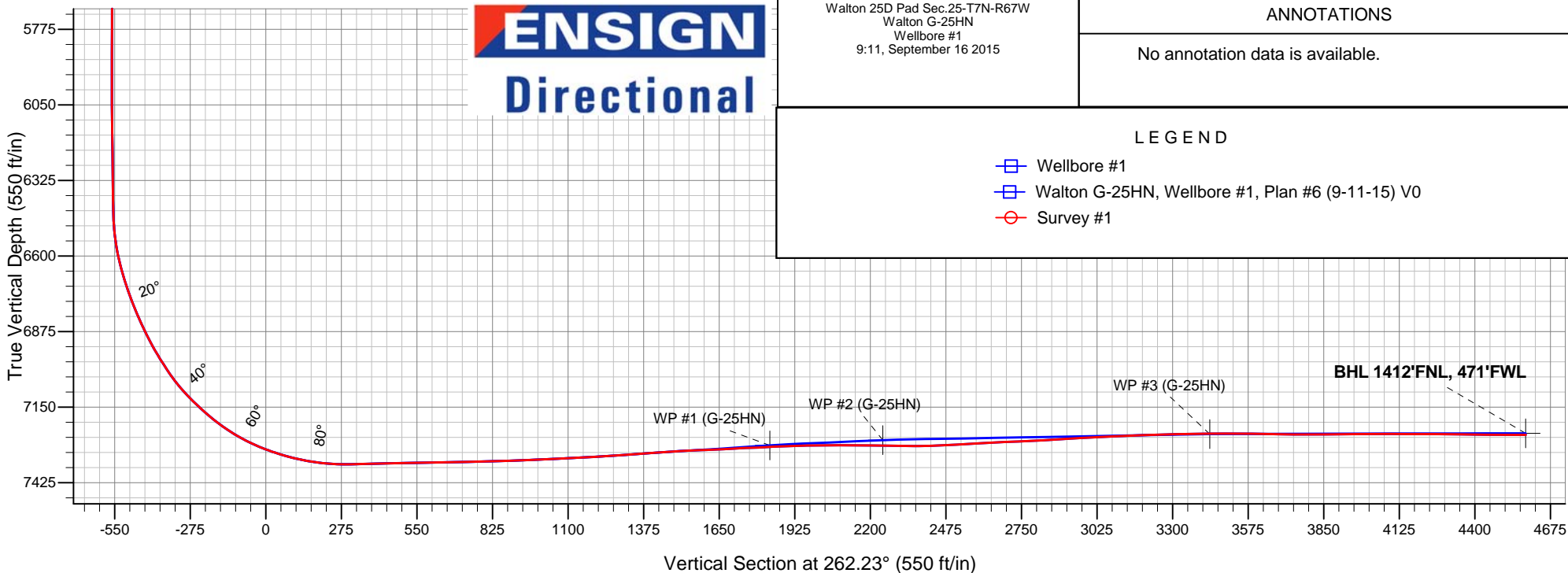
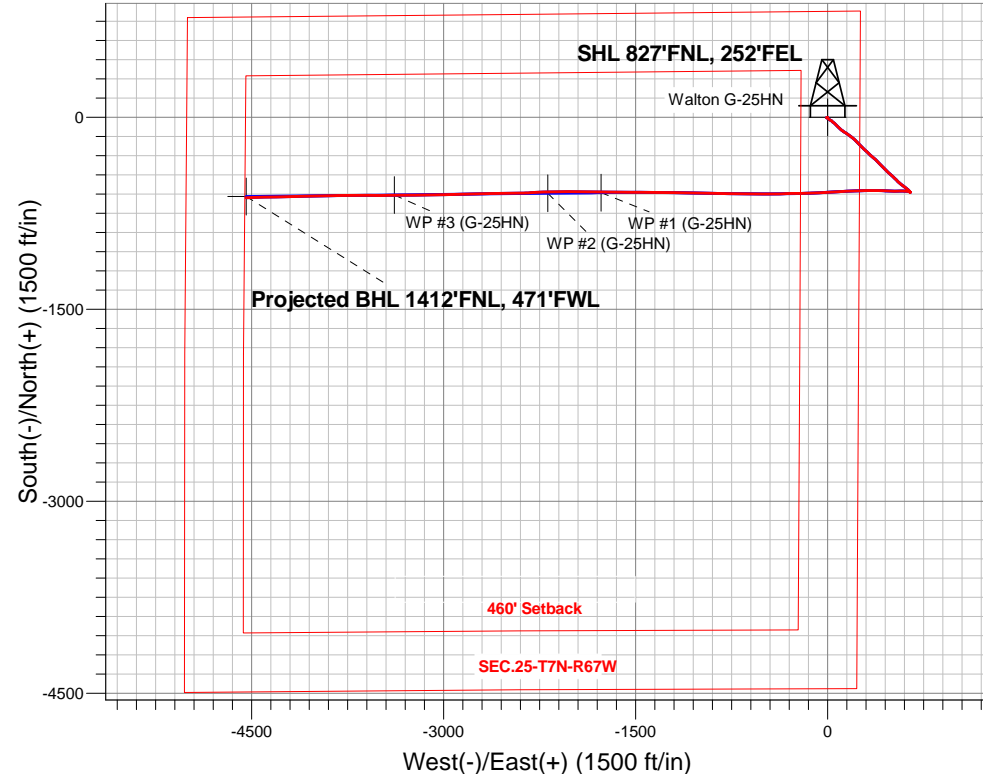
Surface Location: Walton 25D Pad Sec.25-T7N-R67W
North American Datum 1983 , US State Plane 1983 , Colorado Northern Zone

Ground Elevation: 4979.0

+N/-S	+E/-W	Northing	Easting	Latitude	Longitude	Slot
0.0	0.0	1443985.92	3185386.63	40.550227	-104.832879	
RKB - 22.5' WELL @ 5001.5ft (RKB - 22.5')						

FINAL SURVEY

Projected Bottom Hole Location
12253'MD 7251'TVD 629'S & 4542'W of SHL
90.0 degree Incl @ 267.8 degree AZM



ANNOTATIONS

No annotation data is available.

LEGEND

- Wellbore #1
- Walton G-25HN, Wellbore #1, Plan #6 (9-11-15) V0
- Survey #1



Bayswater Exploration & Production, LLC

SEC.25-T7N-R67W

Walton 25D Pad Sec.25-T7N-R67W

Walton G-25HN

Wellbore #1

Survey: Survey #1

Standard Survey Report

16 September, 2015



BAYSWATER
EXPLORATION & PRODUCTION, LLC

Company:	Bayswater Exploration & Production, LLC	Local Co-ordinate Reference:	Well Walton G-25HN
Project:	SEC.25-T7N-R67W	TVD Reference:	WELL @ 5001.5ft (RKB - 22.5')
Site:	Walton 25D Pad Sec.25-T7N-R67W	MD Reference:	WELL @ 5001.5ft (RKB - 22.5')
Well:	Walton G-25HN	North Reference:	True
Wellbore:	Wellbore #1	Survey Calculation Method:	Minimum Curvature
Design:	Wellbore #1	Database:	EDMNEW

Project	SEC.25-T7N-R67W, Weld County, Colorado		
Map System:	US State Plane 1983	System Datum:	Mean Sea Level
Geo Datum:	North American Datum 1983		Using Well Reference Point
Map Zone:	Colorado Northern Zone		Using geodetic scale factor

Site	Walton 25D Pad Sec.25-T7N-R67W		
Site Position:		Northing:	1,444,075.92 ft
From:	Lat/Long	Easting:	3,185,386.51 ft
Position Uncertainty:	0.0 ft	Slot Radius:	"
		Latitude:	40.550474
		Longitude:	-104.832877
		Grid Convergence:	0.43 °

Well	Walton G-25HN		
Well Position	+N/-S	0.0 ft	Northing: 1,443,985.92 ft
	+E/-W	0.0 ft	Easting: 3,185,386.63 ft
Position Uncertainty	0.0 ft	Wellhead Elevation:	ft
		Latitude:	40.550227
		Longitude:	-104.832879
		Ground Level:	4,979.0 ft

Wellbore	Wellbore #1		
Magnetics	Model Name	Sample Date	Declination (°)
	IGRF2010	6/30/2015	8.37
			Dip Angle (°) 67.02
			Field Strength (nT) 52,776

Design	Wellbore #1		
Audit Notes:			
Version:	1.0	Phase:	ACTUAL
		Tie On Depth:	0.0
Vertical Section:	Depth From (TVD) (ft)	+N/-S (ft)	+E/-W (ft)
	0.0	0.0	0.0
			Direction (°) 262.23

Survey Program	Date 9/16/2015		
From (ft)	To (ft)	Survey (Wellbore)	Tool Name
161.0	12,253.0	Survey #1 (Wellbore #1)	MWD
			Description MWD - Standard

Survey									
Measured Depth (ft)	Inclination (°)	Azimuth (°)	Vertical Depth (ft)	+N/-S (ft)	+E/-W (ft)	Vertical Section (ft)	Dogleg Rate (°/100ft)	Build Rate (°/100ft)	Turn Rate (°/100ft)
0.0	0.00	0.00	0.0	0.0	0.0	0.0	0.00	0.00	0.00
1.0	0.00	180.50	1.0	0.0	0.0	0.0	0.43	0.43	0.00
SHL 827°FNL, 252°FEL									
161.0	0.70	180.50	161.0	-1.0	0.0	0.1	0.43	0.43	0.00
253.0	0.60	203.70	253.0	-2.0	-0.2	0.5	0.30	-0.11	25.22
345.0	0.50	243.00	345.0	-2.6	-0.8	1.1	0.41	-0.11	42.72
437.0	0.40	271.20	437.0	-2.8	-1.4	1.8	0.26	-0.11	30.65
529.0	0.40	269.40	529.0	-2.8	-2.1	2.4	0.01	0.00	-1.96
620.0	0.30	288.40	620.0	-2.7	-2.6	3.0	0.17	-0.11	20.88
712.0	0.40	294.00	712.0	-2.5	-3.1	3.5	0.11	0.11	6.09
804.0	0.40	292.30	804.0	-2.3	-3.7	4.0	0.01	0.00	-1.85
896.0	0.50	288.20	896.0	-2.0	-4.4	4.6	0.11	0.11	-4.46
988.0	0.50	287.30	988.0	-1.8	-5.2	5.4	0.01	0.00	-0.98

Company:	Bayswater Exploration & Production, LLC	Local Co-ordinate Reference:	Well Walton G-25HN
Project:	SEC.25-T7N-R67W	TVD Reference:	WELL @ 5001.5ft (RKB - 22.5')
Site:	Walton 25D Pad Sec.25-T7N-R67W	MD Reference:	WELL @ 5001.5ft (RKB - 22.5')
Well:	Walton G-25HN	North Reference:	True
Wellbore:	Wellbore #1	Survey Calculation Method:	Minimum Curvature
Design:	Wellbore #1	Database:	EDMNEW

Survey

Measured Depth (ft)	Inclination (°)	Azimuth (°)	Vertical Depth (ft)	+N/-S (ft)	+E/-W (ft)	Vertical Section (ft)	Dogleg Rate (°/100ft)	Build Rate (°/100ft)	Turn Rate (°/100ft)
1,080.0	0.90	277.70	1,080.0	-1.5	-6.3	6.4	0.45	0.43	-10.43
1,172.0	0.90	175.20	1,172.0	-2.2	-6.9	7.2	1.53	0.00	-111.41
1,264.0	0.60	129.80	1,263.9	-3.2	-6.5	6.9	0.70	-0.33	-49.35
1,354.0	3.80	120.30	1,353.9	-5.0	-3.6	4.2	3.57	3.56	-10.56
1,449.0	5.60	123.50	1,448.5	-9.1	3.0	-1.8	1.91	1.89	3.37
1,490.0	5.50	124.20	1,489.4	-11.4	6.3	-4.7	0.29	-0.24	1.71
1,564.0	6.30	124.70	1,563.0	-15.7	12.6	-10.4	1.08	1.08	0.68
1,656.0	7.10	120.70	1,654.3	-21.4	21.6	-18.5	1.01	0.87	-4.35
1,748.0	7.80	132.60	1,745.6	-28.6	31.1	-27.0	1.84	0.76	12.93
1,839.0	8.60	126.50	1,835.6	-36.8	41.1	-35.8	1.30	0.88	-6.70
1,931.0	9.30	130.70	1,926.5	-45.7	52.3	-45.6	1.04	0.76	4.57
2,023.0	9.90	137.60	2,017.2	-56.4	63.3	-55.1	1.41	0.65	7.50
2,115.0	12.40	136.00	2,107.5	-69.4	75.5	-65.4	2.74	2.72	-1.74
2,207.0	13.50	132.10	2,197.1	-83.7	90.3	-78.1	1.53	1.20	-4.24
2,299.0	14.40	131.10	2,286.4	-98.4	106.9	-92.6	1.01	0.98	-1.09
2,390.0	12.40	120.70	2,375.0	-110.8	123.8	-107.7	3.43	-2.20	-11.43
2,483.0	12.80	125.60	2,465.7	-121.9	140.8	-123.0	1.23	0.43	5.27
2,577.0	13.30	122.80	2,557.3	-133.8	158.3	-138.8	0.86	0.53	-2.98
2,671.0	14.90	127.20	2,648.5	-147.0	177.0	-155.5	2.05	1.70	4.68
2,765.0	14.00	129.10	2,739.5	-161.5	195.5	-171.9	1.08	-0.96	2.02
2,859.0	15.20	132.10	2,830.5	-176.9	213.5	-187.6	1.51	1.28	3.19
2,953.0	14.20	136.50	2,921.4	-193.5	230.5	-202.3	1.59	-1.06	4.68
3,047.0	13.70	134.20	3,012.6	-209.7	246.5	-215.9	0.79	-0.53	-2.45
3,140.0	12.80	135.80	3,103.1	-224.7	261.5	-228.8	1.04	-0.97	1.72
3,234.0	14.10	136.50	3,194.6	-240.5	276.7	-241.6	1.39	1.38	0.74
3,327.0	14.60	134.00	3,284.7	-256.9	292.9	-255.5	0.86	0.54	-2.69
3,421.0	14.20	133.20	3,375.7	-273.0	309.8	-270.1	0.48	-0.43	-0.85
3,516.0	14.20	134.60	3,467.8	-289.1	326.6	-284.5	0.36	0.00	1.47
3,608.0	13.80	130.20	3,557.1	-304.1	343.0	-298.8	1.24	-0.43	-4.78
3,703.0	12.90	131.10	3,649.5	-318.4	359.7	-313.3	0.97	-0.95	0.95
3,796.0	12.60	128.40	3,740.2	-331.6	375.5	-327.2	0.72	-0.32	-2.90
3,890.0	13.30	138.40	3,831.8	-346.0	390.7	-340.3	2.49	0.74	10.64
3,984.0	14.00	139.50	3,923.2	-362.7	405.2	-352.5	0.79	0.74	1.17
4,078.0	14.00	130.70	4,014.4	-378.8	421.2	-366.2	2.26	0.00	-9.36
4,172.0	12.90	137.00	4,105.8	-393.9	437.0	-379.8	1.95	-1.17	6.70
4,267.0	12.30	136.30	4,198.5	-409.0	451.2	-391.8	0.65	-0.63	-0.74
4,360.0	11.20	135.30	4,289.6	-422.5	464.4	-403.1	1.20	-1.18	-1.08
4,453.0	11.90	130.50	4,380.7	-435.2	478.1	-414.9	1.28	0.75	-5.16
4,546.0	12.50	130.50	4,471.6	-448.0	493.0	-428.0	0.65	0.65	0.00
4,640.0	13.20	133.90	4,563.2	-462.0	508.5	-441.4	1.10	0.74	3.62
4,734.0	12.80	133.90	4,654.8	-476.7	523.7	-454.5	0.43	-0.43	0.00
4,828.0	11.30	133.70	4,746.8	-490.3	537.9	-466.7	1.60	-1.60	-0.21
4,922.0	11.00	135.30	4,839.0	-503.0	550.9	-477.8	0.46	-0.32	1.70
5,017.0	12.30	132.30	4,932.0	-516.2	564.7	-489.8	1.51	1.37	-3.16
5,110.0	13.90	126.50	5,022.6	-529.6	581.0	-504.1	2.22	1.72	-6.24
5,203.0	13.50	125.80	5,113.0	-542.6	598.8	-520.0	0.47	-0.43	-0.75
5,298.0	11.50	128.60	5,205.7	-554.9	615.2	-534.6	2.20	-2.11	2.95
5,392.0	9.80	131.90	5,298.1	-566.1	628.5	-546.2	1.92	-1.81	3.51
5,484.0	6.20	138.10	5,389.2	-575.1	637.6	-554.1	4.02	-3.91	6.74
5,579.0	2.80	139.50	5,483.9	-580.7	642.6	-558.2	3.58	-3.58	1.47
5,673.0	1.40	178.90	5,577.8	-583.5	644.1	-559.3	2.06	-1.49	41.91
5,768.0	0.70	155.70	5,672.8	-585.2	644.3	-559.3	0.85	-0.74	-24.42
5,862.0	0.30	94.10	5,766.8	-585.8	644.8	-559.7	0.66	-0.43	-65.53
5,957.0	0.10	299.80	5,861.8	-585.8	645.0	-559.9	0.41	-0.21	-162.42

Company:	Bayswater Exploration & Production, LLC	Local Co-ordinate Reference:	Well Walton G-25HN
Project:	SEC.25-T7N-R67W	TVD Reference:	WELL @ 5001.5ft (RKB - 22.5')
Site:	Walton 25D Pad Sec.25-T7N-R67W	MD Reference:	WELL @ 5001.5ft (RKB - 22.5')
Well:	Walton G-25HN	North Reference:	True
Wellbore:	Wellbore #1	Survey Calculation Method:	Minimum Curvature
Design:	Wellbore #1	Database:	EDMNEW

Survey

Measured Depth (ft)	Inclination (°)	Azimuth (°)	Vertical Depth (ft)	+N/-S (ft)	+E/-W (ft)	Vertical Section (ft)	Dogleg Rate (°/100ft)	Build Rate (°/100ft)	Turn Rate (°/100ft)
6,051.0	0.20	24.00	5,955.8	-585.6	645.0	-559.9	0.23	0.11	89.57
6,144.0	0.40	315.30	6,048.8	-585.2	644.8	-559.8	0.41	0.22	-73.87
6,238.0	1.10	311.60	6,142.8	-584.4	643.9	-559.0	0.75	0.74	-3.94
6,331.0	1.00	310.00	6,235.8	-583.2	642.6	-557.9	0.11	-0.11	-1.72
6,424.0	0.90	308.20	6,328.7	-582.3	641.4	-556.9	0.11	-0.11	-1.94
6,520.0	1.00	298.00	6,424.7	-581.4	640.1	-555.7	0.20	0.10	-10.63
6,614.0	6.20	282.40	6,518.5	-579.9	634.4	-550.2	5.58	5.53	-16.60
6,707.0	13.40	275.40	6,610.1	-577.8	618.8	-535.0	7.83	7.74	-7.53
6,801.0	18.10	272.40	6,700.5	-576.2	593.3	-510.0	5.07	5.00	-3.19
6,895.0	22.50	269.20	6,788.7	-575.8	560.7	-477.8	4.83	4.68	-3.40
6,989.0	25.70	269.00	6,874.5	-576.4	522.4	-439.7	3.41	3.40	-0.21
7,083.0	31.40	272.70	6,957.0	-575.6	477.5	-395.3	6.35	6.06	3.94
7,176.0	35.20	272.20	7,034.7	-573.5	426.5	-345.1	4.10	4.09	-0.54
7,269.0	44.00	269.40	7,106.3	-572.8	367.3	-286.5	9.65	9.46	-3.01
7,363.0	49.10	269.90	7,171.0	-573.2	299.1	-218.8	5.44	5.43	0.53
7,457.0	55.40	267.10	7,228.5	-575.2	224.8	-145.0	7.10	6.70	-2.98
7,550.0	63.80	267.50	7,275.5	-579.0	144.8	-65.2	9.04	9.03	0.43
7,644.0	71.10	268.00	7,311.5	-582.4	58.1	21.2	7.78	7.77	0.53
7,738.0	76.80	265.50	7,337.5	-587.5	-32.1	111.2	6.58	6.06	-2.66
7,832.0	83.70	268.00	7,353.4	-592.7	-124.5	203.5	7.79	7.34	2.66
7,925.0	90.60	269.40	7,358.0	-594.8	-217.3	295.7	7.57	7.42	1.51
7,928.5	90.65	269.40	7,358.0	-594.9	-220.8	299.1	1.54	1.54	0.00
LANDING PT. 1403'FNL, 470'FEL									
7,938.0	90.80	269.40	7,357.9	-595.0	-230.3	308.6	1.54	1.54	0.00
7,983.0	91.30	269.10	7,357.1	-595.6	-275.3	353.3	1.30	1.11	-0.67
8,031.0	91.40	268.50	7,355.9	-596.6	-323.3	400.9	1.27	0.21	-1.25
8,124.0	91.40	269.90	7,353.7	-597.9	-416.2	493.2	1.50	0.00	1.51
8,218.0	90.90	269.80	7,351.8	-598.1	-510.2	586.4	0.54	-0.53	-0.11
8,312.0	90.90	269.80	7,350.3	-598.4	-604.2	679.5	0.00	0.00	0.00
8,405.0	91.20	270.80	7,348.6	-598.0	-697.2	771.6	1.12	0.32	1.08
8,499.0	91.80	271.30	7,346.1	-596.2	-791.1	864.5	0.83	0.64	0.53
8,593.0	92.50	271.00	7,342.6	-594.3	-885.0	957.3	0.81	0.74	-0.32
8,686.0	92.70	271.00	7,338.4	-592.7	-977.9	1,049.1	0.22	0.22	0.00
8,779.0	93.00	271.30	7,333.8	-590.9	-1,070.8	1,140.8	0.46	0.32	0.32
8,874.0	93.30	270.50	7,328.5	-589.4	-1,165.6	1,234.6	0.90	0.32	-0.84
8,939.0	93.70	270.50	7,324.6	-588.8	-1,230.5	1,298.8	0.62	0.62	0.00
9,033.0	94.30	270.30	7,318.0	-588.2	-1,324.3	1,391.6	0.67	0.64	-0.21
9,049.8	94.25	270.30	7,316.8	-588.1	-1,341.1	1,408.2	0.31	-0.31	0.00
WP1 (G-25HN)									
9,097.0	94.10	270.30	7,313.3	-587.8	-1,388.1	1,454.8	0.31	-0.31	0.00
9,152.0	93.30	271.30	7,309.8	-587.1	-1,443.0	1,509.1	2.33	-1.45	1.82
9,247.0	91.70	269.60	7,305.6	-586.3	-1,537.9	1,603.0	2.46	-1.68	-1.79
9,343.0	93.40	270.80	7,301.4	-586.0	-1,633.8	1,698.0	2.17	1.77	1.25
9,439.0	92.20	271.50	7,296.7	-584.0	-1,729.7	1,792.7	1.45	-1.25	0.73
9,480.1	92.42	271.20	7,295.0	-583.1	-1,770.7	1,833.3	0.90	0.53	-0.74
WP #1 (G-25HN)									
9,534.0	92.70	270.80	7,292.6	-582.1	-1,824.6	1,886.5	0.90	0.53	-0.74
9,628.0	91.20	269.90	7,289.4	-581.6	-1,918.5	1,979.5	1.86	-1.60	-0.96
9,724.0	89.80	270.60	7,288.6	-581.2	-2,014.5	2,074.5	1.63	-1.46	0.73
9,819.0	89.40	268.40	7,289.2	-582.0	-2,109.5	2,168.8	2.35	-0.42	-2.32
9,895.1	89.32	268.64	7,290.1	-583.9	-2,185.5	2,244.4	0.33	-0.10	0.31
WP #2 (G-25HN)									
9,915.0	89.30	268.70	7,290.3	-584.4	-2,205.4	2,264.2	0.33	-0.10	0.31
10,010.0	89.40	266.60	7,291.4	-588.3	-2,300.3	2,358.8	2.21	0.11	-2.21

Company:	Bayswater Exploration & Production, LLC	Local Co-ordinate Reference:	Well Walton G-25HN
Project:	SEC.25-T7N-R67W	TVD Reference:	WELL @ 5001.5ft (RKB - 22.5')
Site:	Walton 25D Pad Sec.25-T7N-R67W	MD Reference:	WELL @ 5001.5ft (RKB - 22.5')
Well:	Walton G-25HN	North Reference:	True
Wellbore:	Wellbore #1	Survey Calculation Method:	Minimum Curvature
Design:	Wellbore #1	Database:	EDMNEW

Survey

Measured Depth (ft)	Inclination (°)	Azimuth (°)	Vertical Depth (ft)	+N/-S (ft)	+E/-W (ft)	Vertical Section (ft)	Dogleg Rate (°/100ft)	Build Rate (°/100ft)	Turn Rate (°/100ft)
10,105.0	93.00	269.20	7,289.4	-591.8	-2,395.2	2,453.2	4.67	3.79	2.74
10,201.0	93.10	270.10	7,284.3	-592.4	-2,491.1	2,548.3	0.94	0.10	0.94
10,296.0	92.70	268.40	7,279.5	-593.6	-2,586.0	2,642.5	1.84	-0.42	-1.79
10,391.0	92.50	267.30	7,275.2	-597.2	-2,680.8	2,736.9	1.18	-0.21	-1.16
10,487.0	93.30	267.50	7,270.3	-601.5	-2,776.6	2,832.4	0.86	0.83	0.21
10,582.0	93.60	269.90	7,264.6	-603.7	-2,871.4	2,926.6	2.54	0.32	2.53
10,677.0	92.40	269.80	7,259.6	-603.9	-2,966.2	3,020.6	1.27	-1.26	-0.11
10,773.0	93.00	269.10	7,255.1	-604.8	-3,062.1	3,115.8	0.96	0.63	-0.73
10,868.0	91.40	269.40	7,251.5	-606.1	-3,157.0	3,210.0	1.71	-1.68	0.32
10,964.0	91.40	269.10	7,249.1	-607.3	-3,253.0	3,305.2	0.31	0.00	-0.31
11,059.0	91.00	269.10	7,247.1	-608.8	-3,348.0	3,399.5	0.42	-0.42	0.00
11,095.3	90.62	269.02	7,246.6	-609.4	-3,384.2	3,435.6	1.07	-1.05	-0.21
WP #3 (G-25HN)									
11,154.0	90.00	268.90	7,246.3	-610.5	-3,443.0	3,493.9	1.07	-1.05	-0.21
11,250.0	89.10	270.10	7,247.1	-611.3	-3,538.9	3,589.1	1.56	-0.94	1.25
11,345.0	89.00	271.20	7,248.6	-610.3	-3,633.9	3,683.1	1.16	-0.11	1.16
11,441.0	90.00	268.90	7,249.5	-610.2	-3,729.9	3,778.2	2.61	1.04	-2.40
11,537.0	90.40	269.80	7,249.1	-611.3	-3,825.9	3,873.4	1.03	0.42	0.94
11,632.0	90.80	268.40	7,248.2	-612.7	-3,920.9	3,967.7	1.53	0.42	-1.47
11,727.0	89.90	269.10	7,247.6	-614.8	-4,015.9	4,062.1	1.20	-0.95	0.74
11,823.0	89.90	267.60	7,247.7	-617.6	-4,111.8	4,157.6	1.56	0.00	-1.56
11,919.0	89.70	268.70	7,248.1	-620.7	-4,207.8	4,253.0	1.16	-0.21	1.15
12,014.0	89.30	269.10	7,248.9	-622.5	-4,302.7	4,347.4	0.60	-0.42	0.42
12,109.0	89.30	268.90	7,250.1	-624.2	-4,397.7	4,441.7	0.21	0.00	-0.21
12,195.0	90.00	267.80	7,250.6	-626.6	-4,483.7	4,527.2	1.52	0.81	-1.28
12,253.0	90.00	267.80	7,250.6	-628.9	-4,541.6	4,585.0	0.00	0.00	0.00
BHL 1403'FNL, 470'FWL									

Design Targets

Target Name

- hit/miss target - Shape	Dip Angle (°)	Dip Dir. (°)	TVD (ft)	+N/-S (ft)	+E/-W (ft)	Northing (ft)	Easting (ft)	Latitude	Longitude
SHL 827'FNL, 252'FE - survey hits target center - Point	0.00	0.00	1.0	0.0	0.0	1,443,985.94	3,185,386.63	40.550227	-104.832879
BHL 1403'FNL, 470'F' - survey misses target center by 10.8ft at 12253.0ft MD (7250.6 TVD, -628.9 N, -4541.6 E) - Point	0.00	0.00	7,245.0	-619.6	-4,542.4	1,443,332.15	3,180,849.14	40.548525	-104.849224
WP #3 (G-25HN) - survey misses target center by 3.0ft at 11095.3ft MD (7246.6 TVD, -609.4 N, -3384.2 E) - Point	0.00	0.00	7,248.0	-606.8	-3,384.3	1,443,353.70	3,182,007.09	40.548561	-104.845057
WP #2 (G-25HN) - survey misses target center by 22.3ft at 9895.1ft MD (7290.1 TVD, -583.9 N, -2185.5 E) - Point	0.00	0.00	7,270.0	-593.6	-2,185.5	1,443,375.92	3,183,205.72	40.548597	-104.840743
WP #1 (G-25HN) - survey misses target center by 8.4ft at 9480.1ft MD (7295.0 TVD, -583.1 N, -1770.7 E) - Point	0.00	0.00	7,289.0	-589.0	-1,770.6	1,443,383.64	3,183,620.56	40.548610	-104.839250

Checked By: _____ Approved By: _____ Date: _____