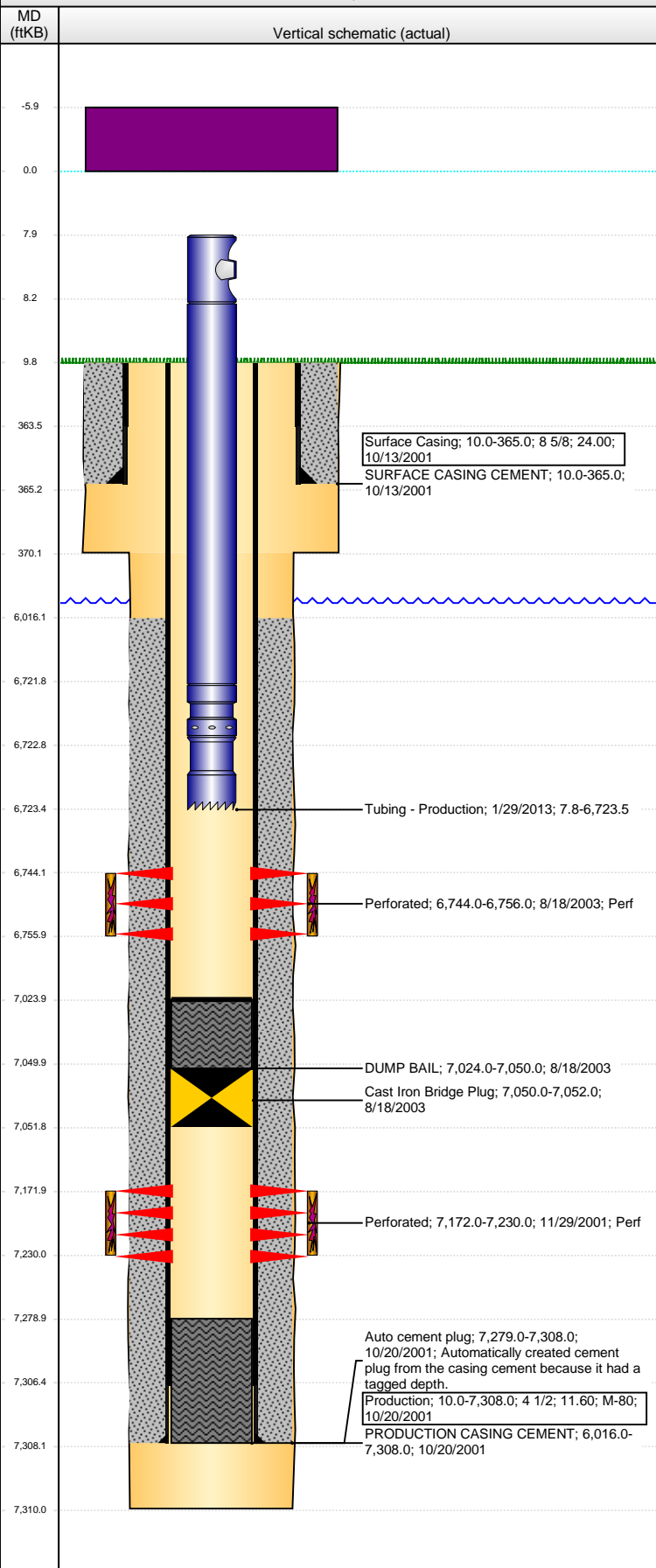


**Well Name: HOSHIKO C02-08**

VERTICAL - ORIGINAL HOLE, 11/2/2015 10:14:30 AM



## Well Header

API	Business Unit	District	Well Config
05-123-20167	DJ BASIN	15	VERTICAL
Original KB Elevation (ft)	KB - GL / MSL (ftKB)	Spud Date	P & A Date
4,622.00	10.00	10/13/2001	
Comment			

## Directions To Well

CR 59 & CR 50 1/2 MILE SOUTH WEST TO TANK BTRY NORTH INTO

## Congressional Location

Quarter 1	Quarter 2	Quarter 3	Quarter 4	Section	Township	Twnshp N...	Range	Rng E/W Dir
		SE	NE	2	4	N	64	W

## Bottom Hole Location

North-South Distance (ft)	From N or S Line	East-West Distance (ft)	From E or W Line

## Plug Back Total Depths

Date	Depth (ftKB)	Method	Com
10/10/2001	7,276.0	CASING TALLY	FLOAT COLLAR
11/29/2001	7,279.0	CASED HOLE LOG	DEPTH LOGGER
8/19/2003	7,024.0	TAG	CIBP UNDER 2 SKS CEMENT

## Wellbore Sections

Section Des	Size (in)	Act Top, MD (ftKB)	Act Btm, MD (ftKB)
SURFACE	12 1/4	10.0	370.0
PRODUCTION	7 7/8	370.0	7,310.0

## Zone Statuses

Zone Name	Status Date	Status	Fluid Type	Job	Prod Method
J SAND	10/13/2001	PR		DRILLING/CO...	
J SAND	8/18/2003	AB		RECOMPLETI...	
CODELL	8/30/2003	PR		RECOMPLETI...	
CODELL	2/21/2006	PR		RE-FRAC, 1/26...	

## Casing Strings

### Surface Casing, 365.0ftKB

Casing Description	Run Date	OD (in)	Wt/Len (l...	Grade	Top, MD (ft...	MD (ftKB)
Surface Casing	10/13/2001	8 5/8	24.00		10.0	365.0

### Production, 7,308.0ftKB

Casing Description	Run Date	OD (in)	Wt/Len (l...	Grade	Top, MD (ft...	MD (ftKB)
Production	10/20/2001	4 1/2	11.60	M-80	10.0	7,308.0

## Cement

Description	Top Depth (ftKB)	Bottom Depth (ftKB)
SURFACE CASING CEMENT	10.0	365.0
Description	Top Depth (ftKB)	Bottom Depth (ftKB)
PRODUCTION CASING CEMENT	6,016.0	7,308.0
Description	Top Depth (ftKB)	Bottom Depth (ftKB)
DUMP BAIL	7,024.0	7,050.0

## Tubing Strings

Tubing Description	Run Date	String...	ID (in)	Wt (lb/ft)	Grade	Len (ft)	Set De...
Tubing	11/29/2001	2 3/8	1.995	4.70	J-55	7,143.00	
Tubing Description	Run Date	String...	ID (in)	Wt (lb/ft)	Grade	Len (ft)	Set De...
Tubing	8/19/2003	2 3/8	1.995	4.70	J-55	6,712.00	
Tubing Description	Run Date	String...	ID (in)	Wt (lb/ft)	Grade	Len (ft)	Set De...
Tubing - Production	1/29/2013	2 3/8	1.995	4.70	J-55	6,715.65	

## Tubing Components

Item Des	OD (in)	Wt (lb/ft)	Grade	Jts	Len (ft)	Btm (ftKB)	Btm (TVD) (ftKB)
Mandrel	2 3/8	4.70	N-80	1	0.55	8.4	
Tubing	2 3/8	4.70	J-55	205	6,713.45	6,721.8	
Pump Seating Nipple	2 3/8	1.10	N-80	1	0.85	6,722.7	
Notched collar	2 3/8	1.10	N-80	1	0.80	6,723.5	

## Perforation Data

Zone	Bnch/St g	Entered Shot Total	Top (ftKB)	Btm (ftKB)	Date
CODELL, ORIGINAL HOLE		48	6,744.00	6,756.00	8/18/2003
J SAND, ORIGINAL HOLE		104	7,172.00	7,230.00	11/29/2001

**Well Name: HOSHIKO C02-08**

VERTICAL - ORIGINAL HOLE, 11/2/2015 10:14:33 AM

## Stimulations & Treatments

Date	Zone	Primary Job Type
11/30/2001	J SAND, ORIGINAL HOLE	DRILLING/COMPLETION - ORIGINAL

Technical Result	Tech Result Details	Tech Result Note

Comment  
**TRIPLE ENTRY**

Date	Zone	Primary Job Type
8/29/2003	CODELL, ORIGINAL HOLE	RECOMPLETION

Technical Result	Tech Result Details	Tech Result Note

Comment  
**DEADSTRING CONFIGURATION**

Date	Zone	Primary Job Type
2/17/2006	CODELL, ORIGINAL HOLE	RE-FRAC

Technical Result	Tech Result Details	Tech Result Note

Comment  
**2 3/8" DEADSTRING CONFIGURATION**

## Other In Hole

Run Date	Des	OD (in)	Top (ftKB)	Btm (ftKB)
8/18/2003	Cast Iron Bridge Plug	3.99	7,050.0	7,052.0

## Logs

Date	Type	Top, MD (ftKB)	Btm, MD (ftKB)
10/20/2001	COMPENSATED DENSITY	4,100.0	7,291.0
10/20/2001	INDUCTION	350.0	7,311.0
11/29/2001	CBL/CCL/GR	5,900.0	7,275.0
10/4/2011	GYRO	10.0	6,700.0

