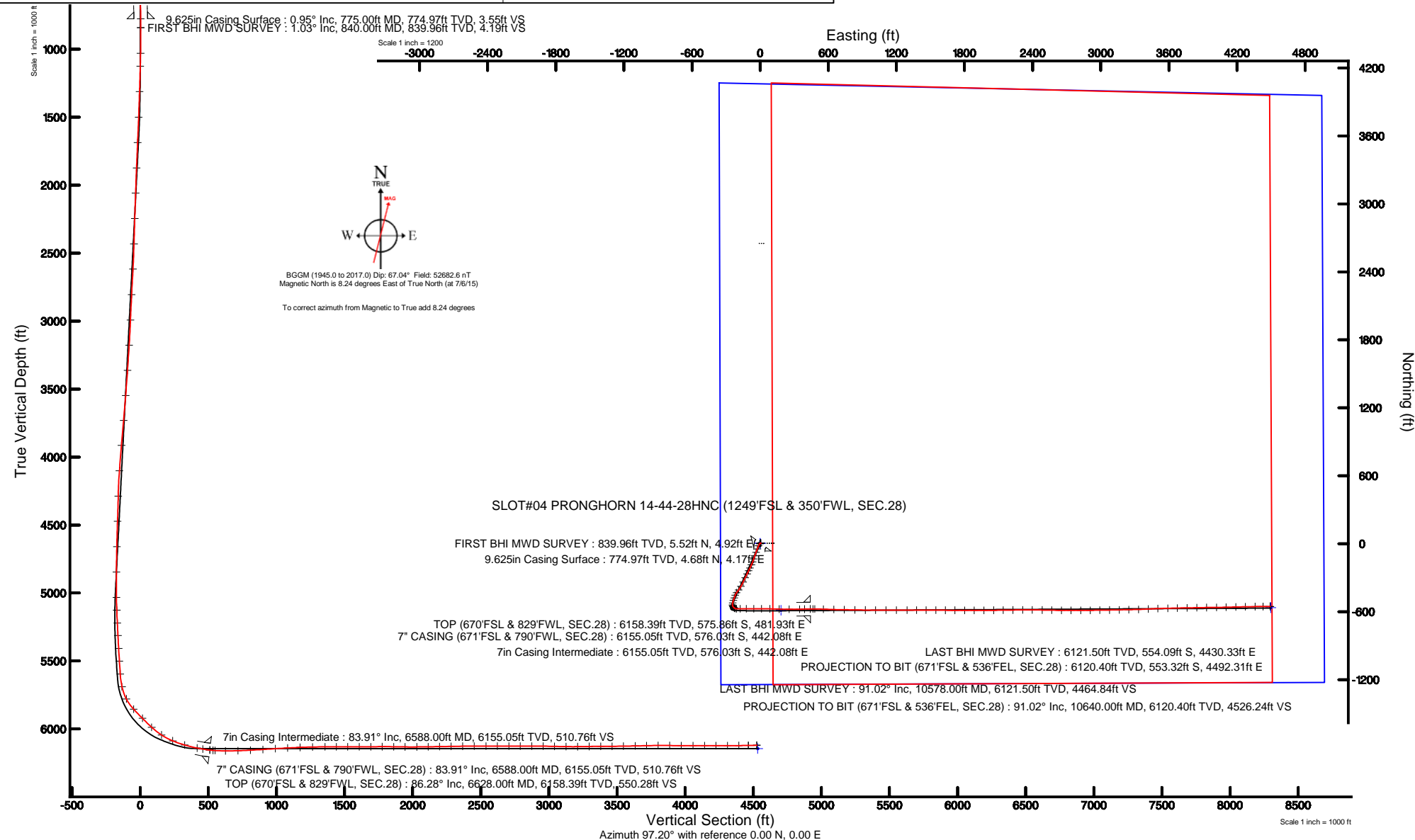


# BONANZA CREEK OIL COMPANY

Location: COLORADO Slot: SLOT#04 PRONGHORN 14-44-28HNC (1249'FSL & 350'FWL, SEC.28)  
Field: WELD COUNTY Well: PRONGHORN 14-44-28HNC  
Facility: SEC.28-T5N-R61W Wellbore: PRONGHORN 14-44-28HNC PWB



Plot reference wellpath is PRONGHORN 14-44-28HNC PWP (REV-A.0)	
True vertical depths are referenced to XTREME 20 (17.2KB) (RKB)	Grid System: NAD83 / Lambert Colorado SP, Northern Zone (501), US feet
Measured depths are referenced to XTREME 20 (17.2KB) (RKB)	North Reference: True north
XTREME 20 (17.2KB) (RKB) to Mean Sea Level: 4612.2 feet	Scale: True distance
Mean Sea Level to Mud line (At Slot: SLOT#04 PRONGHORN 14-44-28HNC (1249'FSL & 350'FWL, SEC.28)): 0 feet	Depths are in feet
Coordinates are in feet referenced to Slot	Created by: cookdanm on 10/30/15





# Actual Wellpath Report

PRONGHORN 14-44-28HNC AWP

Page 1 of 7



## REFERENCE WELLPATH IDENTIFICATION

Operator	BONANZA CREEK OIL COMPANY	Slot	SLOT#04 PRONGHORN 14-44-28HNC (1249'FSL & 350'FWL, SEC.28)
Area	COLORADO	Well	PRONGHORN 14-44-28HNC
Field	WELD COUNTY	Wellbore	PRONGHORN 14-44-28HNC AWB
Facility	SEC.28-T5N-R61W		

## REPORT SETUP INFORMATION

Projection System	NAD83 / Lambert Colorado SP, Northern Zone (501), US feet	Software System	WellArchitect® 4.1.1
North Reference	True	User	Cookdanm
Scale	0.999959	Report Generated	10/30/15 at 10:24:33 AM
Convergence at slot	0.83° East	Database/Source file	WA_DEN_Denver_Defn/PRONGHORN_14-44-28HNC_AWB.xml

## WELLPATH LOCATION

	Local coordinates		Grid coordinates		Geographic coordinates	
	North[ft]	East[ft]	Easting[US ft]	Northing[US ft]	Latitude	Longitude
Slot Location	-2652.18	-33.44	3355997.19	1379467.64	40°22'04.800"N	104°13'20.424"W
Facility Reference Pt			3355992.41	1382119.92	40°22'31.008"N	104°13'19.992"W
Field Reference Pt			3335925.10	1457282.25	40°34'56.460"N	104°17'26.016"W

## WELLPATH DATUM

Calculation method	Minimum curvature	XTREME 20 (17.2'KB) (RKB) to Facility Vertical Datum	4612.20ft
Horizontal Reference Pt	Slot	XTREME 20 (17.2'KB) (RKB) to Mean Sea Level	4612.20ft
Vertical Reference Pt	XTREME 20 (17.2'KB) (RKB)	XTREME 20 (17.2'KB) (RKB) to Mud Line at Slot (SLOT#04 PRONGHORN 14-44-28HNC (1249'FSL & 350'FWL, SEC.28))	4612.20ft
MD Reference Pt	XTREME 20 (17.2'KB) (RKB)	Section Origin	N 0.00, E 0.00 ft
Field Vertical Reference	Mean Sea Level	Section Azimuth	97.20°



# Actual Wellpath Report

PRONGHORN 14-44-28HNC AWP

Page 2 of 7



## REFERENCE WELLPATH IDENTIFICATION

Operator	BONANZA CREEK OIL COMPANY	Slot	SLOT#04 PRONGHORN 14-44-28HNC (1249'FSL & 350'FWL, SEC.28)
Area	COLORADO	Well	PRONGHORN 14-44-28HNC
Field	WELD COUNTY	Wellbore	PRONGHORN 14-44-28HNC AWB
Facility	SEC.28-T5N-R61W		

## WELLPATH DATA (92 stations) † = interpolated/extrapolated station

MD [ft]	Inclination [°]	Azimuth [°]	TVD [ft]	Vert Sect [ft]	North [ft]	East [ft]	DLS [°/100ft]	Comments
0.00†	0.000	41.700	0.00	0.00	0.00	0.00	0.00	
17.20	0.000	41.700	17.20	0.00	0.00	0.00	0.00	
840.00	1.030	41.700	839.96	4.19	5.52	4.92	0.13	FIRST BHI MWD SURVEY
1029.00	1.300	265.740	1028.94	3.05	6.63	3.91	1.14	
1124.00	1.660	268.500	1123.91	0.63	6.51	1.46	0.39	
1312.00	4.050	210.450	1311.69	-4.68	0.72	-4.63	1.85	
1501.00	8.320	203.690	1499.55	-11.20	-17.57	-13.51	2.29	
1690.00	10.200	200.430	1686.08	-18.91	-45.77	-24.84	1.03	
1880.00	9.780	201.090	1873.20	-26.64	-76.59	-36.52	0.23	
2068.00	9.260	199.050	2058.61	-33.58	-105.79	-47.21	0.33	
2257.00	8.660	199.910	2245.30	-39.84	-133.54	-57.02	0.33	
2445.00	7.990	198.500	2431.32	-45.51	-159.24	-65.98	0.37	
2633.00	9.680	205.290	2617.09	-52.98	-185.92	-76.88	1.05	
2823.00	9.020	205.660	2804.56	-62.66	-213.79	-90.15	0.35	
3012.00	7.700	204.850	2991.55	-71.19	-238.64	-101.89	0.70	
3200.00	10.690	206.810	3177.11	-80.87	-265.64	-115.05	1.60	
3389.00	12.290	205.720	3362.32	-93.14	-299.40	-131.69	0.85	
3578.00	13.390	205.850	3546.59	-106.53	-337.22	-149.96	0.58	
3766.00	13.240	208.060	3729.54	-121.16	-375.81	-169.58	0.28	
3954.00	10.010	216.630	3913.67	-136.86	-407.93	-189.46	1.94	
4143.00	8.720	217.460	4100.15	-152.16	-432.49	-207.98	0.69	
4331.00	7.080	196.700	4286.39	-161.25	-454.90	-219.98	1.74	
4519.00	7.990	201.090	4472.77	-166.31	-478.19	-228.01	0.57	
4707.00	6.650	198.270	4659.24	-171.53	-500.72	-236.12	0.74	
4895.00	6.310	192.310	4846.04	-174.55	-521.15	-241.74	0.40	
5083.00	5.620	179.590	5033.03	-174.25	-540.45	-243.87	0.79	
5177.00	4.010	153.380	5126.70	-171.81	-547.99	-242.37	2.86	
5271.00	4.190	148.170	5220.46	-167.82	-553.85	-239.08	0.44	
5364.00	4.140	145.570	5313.22	-163.45	-559.51	-235.39	0.21	
5459.00	4.380	128.810	5407.96	-158.08	-564.61	-230.63	1.33	



# Actual Wellpath Report

PRONGHORN 14-44-28HNC AWP

Page 3 of 7



## REFERENCE WELLPATH IDENTIFICATION

Operator	BONANZA CREEK OIL COMPANY	Slot	SLOT#04 PRONGHORN 14-44-28HNC (1249'FSL & 350'FWL, SEC.28)
Area	COLORADO	Well	PRONGHORN 14-44-28HNC
Field	WELD COUNTY	Wellbore	PRONGHORN 14-44-28HNC AWB
Facility	SEC.28-T5N-R61W		

## WELLPATH DATA (92 stations) † = interpolated/extrapolated station

MD [ft]	Inclination [°]	Azimuth [°]	TVD [ft]	Vert Sect [ft]	North [ft]	East [ft]	DLS [°/100ft]	Comments
5553.00	3.950	123.570	5501.71	-152.12	-568.65	-225.13	0.61	
5648.00	3.800	116.450	5596.49	-146.22	-571.86	-219.59	0.53	
5742.00	11.850	95.100	5689.55	-133.61	-574.11	-207.17	8.96	
5837.00	27.720	89.190	5778.67	-101.78	-574.67	-175.15	16.82	
5930.00	43.410	89.810	5854.08	-48.33	-574.25	-121.23	16.88	
6024.00	44.620	90.770	5921.69	16.51	-574.59	-55.92	1.47	
6119.00	47.420	89.370	5987.65	84.33	-574.65	12.43	3.13	
6211.00	57.000	90.870	6043.96	156.40	-574.87	85.05	10.49	
6305.00	68.040	92.090	6087.27	239.25	-577.06	168.28	11.80	
6398.00	73.200	90.060	6118.12	326.44	-578.68	255.96	5.92	
6493.00	79.630	88.810	6140.43	417.89	-577.76	348.25	6.89	
6536.00	80.320	88.730	6147.91	459.77	-576.85	390.58	1.62	
6588.00†	83.905	89.444	6155.05	510.76	-576.03	442.08	7.03	7" CASING (671'FSL & 790'FWL, SEC.28)
6612.00	85.560	89.770	6157.25	534.44	-575.87	465.97	7.03	
6628.00†	86.278	90.199	6158.39	550.28	-575.86	481.93	5.22	TOP (670'FSL & 829'FWL, SEC.28)
6704.00	89.690	92.230	6161.06	625.80	-577.47	557.85	5.22	
6796.00	91.860	91.760	6159.82	717.41	-580.68	649.78	2.41	
6888.00	92.900	90.700	6156.00	808.83	-582.65	741.68	1.61	
6981.00	93.580	91.070	6150.74	901.12	-584.08	834.52	0.83	
7073.00	93.430	90.290	6145.12	992.35	-585.17	926.34	0.86	
7164.00	93.070	90.330	6139.96	1082.55	-585.66	1017.19	0.40	
7256.00	92.620	90.020	6135.39	1173.75	-585.95	1109.08	0.59	
7348.00	90.710	90.120	6132.72	1264.99	-586.06	1201.04	2.08	
7440.00	91.230	90.230	6131.16	1356.29	-586.34	1293.02	0.58	
7525.00	89.350	90.100	6130.73	1440.64	-586.58	1378.02	2.22	
7609.00	90.120	90.070	6131.12	1524.00	-586.71	1462.01	0.92	
7694.00	89.940	90.020	6131.07	1608.34	-586.78	1547.01	0.22	
7779.00	90.460	90.300	6130.78	1692.69	-587.01	1632.01	0.69	
7863.00	90.190	89.940	6130.30	1776.05	-587.19	1716.01	0.54	
7948.00	89.230	90.600	6130.73	1860.43	-587.59	1801.01	1.37	



# Actual Wellpath Report

PRONGHORN 14-44-28HNC AWP

Page 4 of 7



## REFERENCE WELLPATH IDENTIFICATION

Operator	BONANZA CREEK OIL COMPANY	Slot	SLOT#04 PRONGHORN 14-44-28HNC (1249'FSL & 350'FWL, SEC.28)
Area	COLORADO	Well	PRONGHORN 14-44-28HNC
Field	WELD COUNTY	Wellbore	PRONGHORN 14-44-28HNC AWB
Facility	SEC.28-T5N-R61W		

## WELLPATH DATA (92 stations)

MD [ft]	Inclination [°]	Azimuth [°]	TVD [ft]	Vert Sect [ft]	North [ft]	East [ft]	DLS [°/100ft]	Comments
8033.00	89.170	89.940	6131.92	1944.80	-587.99	1886.00	0.78	
8119.00	90.550	89.770	6132.13	2030.09	-587.77	1972.00	1.62	
8203.00	90.770	89.500	6131.16	2113.36	-587.24	2055.99	0.41	
8288.00	90.930	89.100	6129.90	2197.54	-586.20	2140.97	0.51	
8373.00	91.110	89.440	6128.39	2281.72	-585.12	2225.95	0.45	
8459.00	90.740	89.390	6127.00	2366.91	-584.24	2311.94	0.43	
8544.00	89.840	90.400	6126.57	2451.22	-584.08	2396.93	1.59	
8631.00	90.090	90.990	6126.62	2537.66	-585.14	2483.93	0.74	
8716.00	90.090	91.060	6126.49	2622.17	-586.66	2568.91	0.08	
8801.00	90.060	90.180	6126.38	2706.61	-587.58	2653.91	1.04	
8885.00	90.150	90.060	6126.22	2789.97	-587.75	2737.91	0.18	
8970.00	90.370	89.990	6125.84	2874.30	-587.79	2822.90	0.27	
9054.00	88.700	89.550	6126.52	2957.59	-587.45	2906.90	2.06	
9139.00	88.920	89.050	6128.28	3041.77	-586.42	2991.87	0.64	
9224.00	88.790	89.180	6129.98	3125.91	-585.10	3076.85	0.22	
9310.00	90.740	88.710	6130.33	3211.01	-583.52	3162.83	2.33	
9395.00	91.050	88.740	6129.01	3295.07	-581.63	3247.79	0.37	
9481.00	90.620	88.670	6127.75	3380.12	-579.68	3333.76	0.51	
9566.00	89.880	86.470	6127.38	3463.92	-576.08	3418.68	2.73	
9651.00	91.260	88.050	6126.54	3547.63	-572.02	3503.57	2.47	
9738.00	91.080	88.800	6124.76	3633.60	-569.63	3590.52	0.89	
9823.00	91.420	88.470	6122.91	3717.63	-567.60	3675.48	0.56	
9908.00	89.940	89.270	6121.90	3801.72	-565.93	3760.45	1.98	
9993.00	89.780	88.940	6122.10	3885.88	-564.60	3845.44	0.43	
10080.00	89.720	88.920	6122.48	3971.97	-562.97	3932.43	0.07	
10167.00	90.190	89.780	6122.55	4058.16	-561.99	4019.42	1.13	
10252.00	89.540	88.180	6122.75	4142.28	-560.47	4104.40	2.03	
10337.00	90.160	88.590	6122.98	4226.28	-558.08	4189.37	0.87	
10422.00	90.150	89.080	6122.75	4310.37	-556.35	4274.35	0.58	
10507.00	90.370	89.160	6122.36	4394.53	-555.05	4359.34	0.28	



# Actual Wellpath Report

PRONGHORN 14-44-28HNC AWP

Page 5 of 7



## REFERENCE WELLPATH IDENTIFICATION

Operator	BONANZA CREEK OIL COMPANY	Slot	SLOT#04 PRONGHORN 14-44-28HNC (1249'FSL & 350'FWL, SEC.28)
Area	COLORADO	Well	PRONGHORN 14-44-28HNC
Field	WELD COUNTY	Wellbore	PRONGHORN 14-44-28HNC AWB
Facility	SEC.28-T5N-R61W		

## WELLPATH DATA (92 stations)

MD [ft]	Inclination [°]	Azimuth [°]	TVD [ft]	Vert Sect [ft]	North [ft]	East [ft]	DLS [°/100ft]	Comments
10578.00	91.020	89.290	6121.50	4464.84	-554.09	4430.33	0.93	LAST BHI MWD SURVEY
10640.00	91.020	89.290	6120.40	4526.24	-553.32	4492.31	0.00	PROJECTION TO BIT (671'FSL & 536'FEL, SEC.28)

## HOLE & CASING SECTIONS - Ref Wellbore: PRONGHORN 14-44-28HNC AWB Ref Wellpath: PRONGHORN 14-44-28HNC AWP

String/Diameter	Start MD [ft]	End MD [ft]	Interval [ft]	Start TVD [ft]	End TVD [ft]	Start N/S [ft]	Start E/W [ft]	End N/S [ft]	End E/W [ft]
9.625in Casing Surface	17.20	775.00	757.80	17.20	774.97	0.00	0.00	4.68	4.17
8.75in Open Hole	775.00	6588.00	5813.00	774.97	6155.05	4.68	4.17	-576.03	442.08
7in Casing Intermediate	17.20	6588.00	6570.80	17.20	6155.05	0.00	0.00	-576.03	442.08
6.125in Open Hole	6588.00	10640.00	4052.00	6155.05	6120.40	-576.03	442.08	-553.32	4492.31

## TARGETS

Name	TVD [ft]	North [ft]	East [ft]	Grid East [US ft]	Grid North [US ft]	Latitude	Longitude	Shape
SEC.28-T05N-R61W	0.00	3.64	0.00	3355997.14	1379471.29	40°22'04.836"N	104°13'20.424"W	polygon
PRONGHORN 14-44-28HNC BHL ON PLAT (660'FSL & 460'FEL, SEC.28)	6144.20	-564.27	4497.58	3360502.23	1378968.25	40°21'59.220"N	104°12'22.320"W	point
PRONGHORN 14-44-28HNC ENTRY POINT	6144.20	-586.54	183.92	3356189.53	1378883.84	40°21'59.004"N	104°13'18.048"W	point
SEC.28-T05N-R61W (460' SETBACK)	6145.00	3.64	0.00	3355997.14	1379471.29	40°22'04.836"N	104°13'20.424"W	polygon



# Actual Wellpath Report

PRONGHORN 14-44-28HNC AWP

Page 6 of 7



REFERENCE WELLPATH IDENTIFICATION			
Operator	BONANZA CREEK OIL COMPANY	Slot	SLOT#04 PRONGHORN 14-44-28HNC (1249'FSL & 350'FWL, SEC.28)
Area	COLORADO	Well	PRONGHORN 14-44-28HNC
Field	WELD COUNTY	Wellbore	PRONGHORN 14-44-28HNC AWB
Facility	SEC.28-T5N-R61W		

WELLPATH COMPOSITION - Ref Wellbore: PRONGHORN 14-44-28HNC AWB    Ref Wellpath: PRONGHORN 14-44-28HNC AWP				
Start MD [ft]	End MD [ft]	Positional Uncertainty Model	Log Name/Comment	Wellbore
17.20	6536.00	NaviTrak (Standard)	BHI MWD/NAVITRAK (STD) 7.875" HOLE <840-6536>	PRONGHORN 14-44-28HNC AWB
6536.00	10578.00	NaviTrak (Standard)	BHI MWD/NAVITRAK (STD) 6.125" HOLE <6612-10578>	PRONGHORN 14-44-28HNC AWB
10578.00	10640.00	Blind Drilling (std)	Projection to bit	PRONGHORN 14-44-28HNC AWB



# Actual Wellpath Report

PRONGHORN 14-44-28HNC AWP

Page 7 of 7



REFERENCE WELLPATH IDENTIFICATION				
Operator	BONANZA CREEK OIL COMPANY	Slot	SLOT#04 PRONGHORN 14-44-28HNC (1249'FSL & 350'FWL, SEC.28)	
Area	COLORADO	Well	PRONGHORN 14-44-28HNC	
Field	WELD COUNTY	Wellbore	PRONGHORN 14-44-28HNC AWB	
Facility	SEC.28-T5N-R61W			

WELLPATH COMMENTS				
MD [ft]	Inclination [°]	Azimuth [°]	TVD [ft]	Comment
840.00	1.030	41.700	839.96	FIRST BHI MWD SURVEY
6588.00	83.905	89.444	6155.05	7" CASING (671'FSL & 790'FWL, SEC.28)
6628.00	86.278	90.199	6158.39	TOP (670'FSL & 829'FWL, SEC.28)
10578.00	91.020	89.290	6121.50	LAST BHI MWD SURVEY
10640.00	91.020	89.290	6120.40	PROJECTION TO BIT (671'FSL & 536'FEL, SEC.28)