



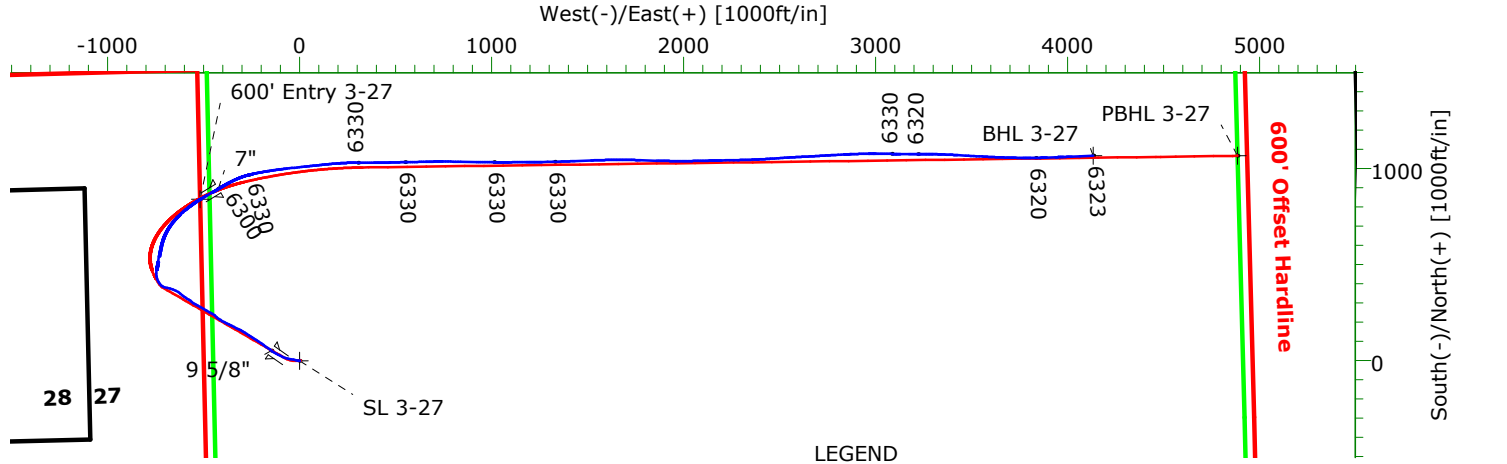
CARRIZO

CARRIZO OIL & GAS, INC.

Field: Niobrara CONZ'83
Site: Nelson Ranches 1-27-10-59 Pad
Well: 3-27-10-59
Wellpath: Original Hole
Plan: Plan #3



Precision
Directional Services



LEGEND

3-27-10-59, Original Hole, Plan #3
Original Hole



Azimuths to Grid North
True North: -0.99°
Magnetic North: 7.09°

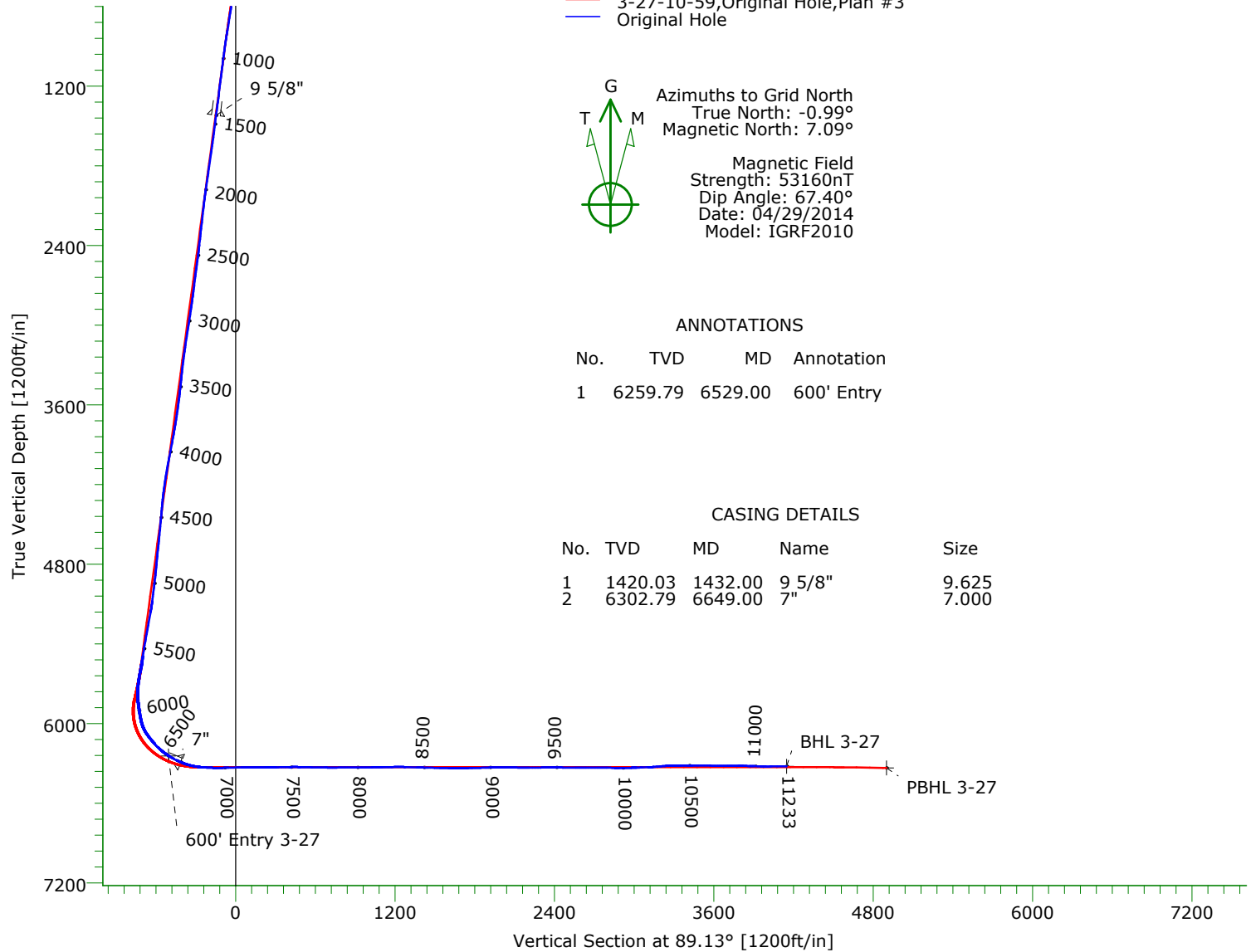
Magnetic Field
Strength: 53160nT
Dip Angle: 67.40°
Date: 04/29/2014
Model: IGRF2010

ANNOTATIONS

No.	TVD	MD	Annotation
1	6259.79	6529.00	600' Entry

CASING DETAILS

No.	TVD	MD	Name	Size
1	1420.03	1432.00	9 5/8"	9.625
2	6302.79	6649.00	7"	7.000



TARGET DETAILS

Name	TVD	+N/-S	+E/-W	Northing	Easting	Latitude	Longitude	Shape
SL 3-27	0.00	0.00	0.00	1541558.11	3421935.55	40°48'35.986N103°58'32.731W		Point
600' Entry 3-27	6244.16	840.94	-517.66	1542399.05	3421417.89	40°48'44.382N103°58'39.274W		Point
BHL 3-27	6322.51	1068.00	4132.75	1542626.11	3426068.30	40°48'45.832N103°57'38.754W		Point
PBHL 3-27	6335.00	1066.68	4884.90	1542624.79	3426820.45	40°48'45.689N103°57'28.974W		Point

Wellpath: (3-27-10-59/Original Hole)

Created By: Tony LoRicca

Date: 05/09/2014

PRECISION DIRECTIONAL SERVICES, INC.

713.435.6250

Precision Directional Services, Inc.

Survey Report

Company: CARRIZO OIL & GAS, INC. Field: Niobrara CONZ'83 Site: Nelson Ranches 1-27-10-59 Pad Well: 3-27-10-59 Wellpath: Original Hole	Date: 05/09/2014 Co-ordinate(NE) Reference: Well: 3-27-10-59, Grid North Vertical (TVD) Reference: 5167'GL+17'KB 5184.0 Section (VS) Reference: Well (0.00N,0.00E,89.13Azi) Survey Calculation Method: Minimum Curvature	Time: 08:55:19 Page: 1 Db: Adapti
--	---	--

Field: Niobrara CONZ'83 Map System: US State Plane Coordinate System 1983 Geo Datum: GRS 1980 Sys Datum: Mean Sea Level	Map Zone: Colorado, Northern Zone Coordinate System: Well Centre Geomagnetic Model: IGRF2010
--	---

Site: Nelson Ranches 1-27-10-59 Pad Weld County, CO			
Site Position: From: Map Position Uncertainty: 0.00 ft Ground Level: 5167.00 ft	Northing: 1541002.63 ft Easting: 3422535.10 ft	Latitude: 40 48 30.396 N Longitude: 103 58 25.060 W North Reference: Grid Grid Convergence: 0.99 deg	

Well: 3-27-10-59 Well Position: +N/-S 555.48 ft +E/-W -599.55 ft Position Uncertainty: 0.00 ft	Slot Name: 3-27 Northing: 1541558.11 ft Easting : 3421935.55 ft Latitude: 40 48 35.986 N Longitude: 103 58 32.731 W
--	--

Wellpath: Original Hole Current Datum: 5167'GL+17'KB Magnetic Data: 04/29/2014 Field Strength: 53160 nT Vertical Section: Depth From (TVD) ft	Drilled From: Surface Tie-on Depth: 0.00 ft Above System Datum: Mean Sea Level Declination: 8.08 deg Mag Dip Angle: 67.40 deg +N/-S ft +E/-W ft Direction bearing
0.00	0.00

Survey Program for Definitive Wellpath Date: 05/08/2014 Validated: No Version: 3			
Actual From	To	Survey	Toolcode Tool Name
ft	ft		
139.00	11163.00	Survey #1 (139.00-11163.00)	MWD Std MWD
11233.00	11233.00	Survey #2 (11233.00-11233.00)	Project Projection

Survey										
MD	Incl	Azim	TVD	+N/-S	+E/-W	VS	DLS	Build	Turn	Tool/Comment
ft	deg	bearing	ft	ft	ft	ft	deg/100ft	deg/100ft	deg/100ft	
0.00	0.00	0.00	0.00	0.00	0.00	0.00	0.00	0.00	0.00	TIE LINE
139.00	0.40	204.70	139.00	-0.44	-0.20	-0.21	0.29	0.29	0.00	MWD
233.00	2.10	265.80	232.98	-0.87	-2.06	-2.07	2.06	1.81	65.00	MWD
325.00	3.10	279.90	324.88	-0.56	-6.19	-6.20	1.28	1.09	15.33	MWD
416.00	4.80	281.50	415.66	0.62	-12.34	-12.33	1.87	1.87	1.76	MWD
508.00	5.70	284.10	507.27	2.50	-20.55	-20.51	1.01	0.98	2.83	MWD
599.00	8.90	282.90	597.52	5.17	-31.80	-31.71	3.52	3.52	-1.32	MWD
691.00	9.60	281.00	688.33	8.23	-46.26	-46.13	0.83	0.76	-2.07	MWD
782.00	9.40	280.10	778.08	10.98	-61.03	-60.85	0.27	-0.22	-0.99	MWD
874.00	9.00	289.70	868.90	14.72	-75.20	-74.97	1.72	-0.43	10.43	MWD
965.00	8.40	295.00	958.86	19.93	-87.93	-87.61	1.10	-0.66	5.82	MWD
1057.00	7.90	292.00	1049.93	25.14	-99.88	-99.48	0.71	-0.54	-3.26	MWD
1148.00	8.10	298.20	1140.04	30.51	-111.33	-110.85	0.97	0.22	6.81	MWD
1240.00	8.40	301.70	1231.09	37.11	-122.76	-122.18	0.64	0.33	3.80	MWD
1331.00	8.90	302.10	1321.06	44.34	-134.37	-133.69	0.55	0.55	0.44	MWD
1394.00	9.10	305.40	1383.28	49.81	-142.56	-141.79	0.88	0.32	5.24	MWD
1483.00	8.80	304.00	1471.20	57.70	-153.94	-153.05	0.42	-0.34	-1.57	MWD
1568.00	9.10	305.60	1555.16	65.25	-164.80	-163.79	0.46	0.35	1.88	MWD
1653.00	9.80	305.20	1639.01	73.33	-176.18	-175.04	0.83	0.82	-0.47	MWD
1738.00	10.30	306.60	1722.70	82.03	-188.19	-186.92	0.65	0.59	1.65	MWD
1823.00	10.20	305.90	1806.35	90.97	-200.39	-198.98	0.19	-0.12	-0.82	MWD
1908.00	9.80	303.10	1890.06	99.34	-212.54	-211.01	0.74	-0.47	-3.29	MWD

Precision Directional Services, Inc.

Survey Report

Company: CARRIZO OIL & GAS, INC.	Date: 05/09/2014	Time: 08:55:19	Page: 2
Field: Niobrara CONZ'83	Co-ordinate(NE) Reference: Well: 3-27-10-59, Grid North		
Site: Nelson Ranches 1-27-10-59 Pad	Vertical (TVD) Reference: 5167'GL+17'KB 5184.0		
Well: 3-27-10-59	Section (VS) Reference: Well (0.00N,0.00E,89.13Azi)		
Wellpath: Original Hole	Survey Calculation Method: Minimum Curvature		Db: Adapti

Survey

MD ft	Incl deg	Azim bearing	TVD ft	+N/-S ft	+E/-W ft	VS ft	DLS deg/100ft	Build deg/100ft	Turn deg/100ft	Tool/Comment
1993.00	10.00	303.50	1973.79	107.36	-224.76	-223.10	0.25	0.24	0.47	MWD
2078.00	8.50	302.80	2057.68	114.84	-236.19	-234.42	1.77	-1.76	-0.82	MWD
2163.00	7.50	301.50	2141.85	121.14	-246.20	-244.34	1.20	-1.18	-1.53	MWD
2248.00	7.70	299.40	2226.11	126.83	-255.89	-253.94	0.40	0.24	-2.47	MWD
2333.00	7.30	302.90	2310.38	132.56	-265.39	-263.35	0.71	-0.47	4.12	MWD
2418.00	7.60	304.50	2394.66	138.68	-274.56	-272.42	0.43	0.35	1.88	MWD
2503.00	9.10	303.80	2478.76	145.60	-284.77	-282.53	1.77	1.76	-0.82	MWD
2588.00	9.20	298.40	2562.68	152.57	-296.34	-293.99	1.02	0.12	-6.35	MWD
2673.00	7.80	298.20	2646.74	158.53	-307.40	-304.96	1.65	-1.65	-0.24	MWD
2759.00	7.90	294.50	2731.94	163.74	-317.92	-315.40	0.60	0.12	-4.30	MWD
2844.00	8.90	294.70	2816.03	168.91	-329.21	-326.61	1.18	1.18	0.24	MWD
2929.00	9.90	298.50	2899.88	175.15	-341.60	-338.91	1.38	1.18	4.47	MWD
3013.00	10.30	297.00	2982.58	182.00	-354.64	-351.84	0.57	0.48	-1.79	MWD
3098.00	9.70	296.30	3066.29	188.62	-367.83	-364.93	0.72	-0.71	-0.82	MWD
3183.00	9.30	297.70	3150.13	194.99	-380.33	-377.33	0.54	-0.47	1.65	MWD
3268.00	8.50	296.80	3234.10	201.01	-392.02	-388.92	0.96	-0.94	-1.06	MWD
3353.00	7.70	297.50	3318.25	206.48	-402.68	-399.50	0.95	-0.94	0.82	MWD
3438.00	6.90	302.60	3402.56	211.86	-412.03	-408.77	1.21	-0.94	6.00	MWD
3523.00	8.00	308.90	3486.85	218.32	-420.94	-417.57	1.61	1.29	7.41	MWD
3607.00	9.70	310.30	3569.84	226.57	-430.88	-427.39	2.04	2.02	1.67	MWD
3692.00	10.00	304.30	3653.59	235.36	-442.44	-438.82	1.26	0.35	-7.06	MWD
3777.00	10.80	301.90	3737.20	243.73	-455.30	-451.55	1.07	0.94	-2.82	MWD
3862.00	11.90	300.60	3820.53	252.40	-469.60	-465.72	1.33	1.29	-1.53	MWD
3947.00	12.70	299.80	3903.58	261.50	-485.26	-481.23	0.96	0.94	-0.94	MWD
4032.00	12.80	300.30	3986.48	270.90	-501.49	-497.32	0.18	0.12	0.59	MWD
4116.00	11.60	299.80	4068.59	279.79	-516.86	-512.55	1.43	-1.43	-0.60	MWD
4201.00	10.20	296.60	4152.05	287.41	-531.00	-526.58	1.79	-1.65	-3.76	MWD
4286.00	8.80	295.90	4235.88	293.62	-543.58	-539.06	1.65	-1.65	-0.82	MWD
4371.00	7.10	303.30	4320.07	299.34	-553.82	-549.21	2.33	-2.00	8.71	MWD
4456.00	6.50	313.50	4404.47	305.54	-561.70	-557.00	1.58	-0.71	12.00	MWD
4541.00	6.70	307.00	4488.91	311.83	-569.15	-564.35	0.91	0.24	-7.65	MWD
4626.00	6.80	304.70	4573.32	317.68	-577.25	-572.36	0.34	0.12	-2.71	MWD
4711.00	7.30	300.60	4657.68	323.29	-586.04	-581.06	0.83	0.59	-4.82	MWD
4796.00	6.40	302.90	4742.07	328.62	-594.66	-589.60	1.11	-1.06	2.71	MWD
4881.00	7.10	306.80	4826.48	334.34	-602.85	-597.70	0.98	0.82	4.59	MWD
4966.00	8.40	308.20	4910.70	341.32	-611.93	-606.68	1.55	1.53	1.65	MWD
5051.00	9.00	310.00	4994.72	349.44	-621.90	-616.53	0.78	0.71	2.12	MWD
5136.00	8.80	307.50	5078.70	357.67	-632.16	-626.65	0.51	-0.24	-2.94	MWD
5219.00	11.20	292.90	5160.45	364.67	-644.62	-639.01	4.18	2.89	-17.59	MWD
5304.00	11.20	287.60	5243.83	370.38	-660.09	-654.39	1.21	0.00	-6.24	MWD
5389.00	10.80	286.40	5327.27	375.13	-675.60	-669.83	0.54	-0.47	-1.41	MWD
5474.00	10.30	285.40	5410.83	379.39	-690.57	-684.73	0.63	-0.59	-1.18	MWD
5559.00	9.60	283.60	5494.55	383.08	-704.78	-698.89	0.90	-0.82	-2.12	MWD
5602.00	10.90	296.60	5536.87	385.74	-711.91	-705.97	6.15	3.02	30.23	MWD
5644.00	14.90	312.80	5577.82	391.19	-719.42	-713.40	12.75	9.52	38.57	MWD
5687.00	17.90	322.40	5619.07	400.19	-727.52	-721.36	9.38	6.98	22.33	MWD
5729.00	19.20	329.80	5658.89	411.27	-734.93	-728.60	6.40	3.10	17.62	MWD
5771.00	20.90	340.00	5698.36	424.28	-740.97	-734.44	9.24	4.05	24.29	MWD
5814.00	22.20	349.50	5738.36	439.48	-745.07	-738.31	8.65	3.02	22.09	MWD
5857.00	22.80	359.90	5778.11	455.81	-746.57	-739.56	9.35	1.40	24.19	MWD
5899.00	25.80	6.70	5816.39	473.03	-745.52	-738.25	9.76	7.14	16.19	MWD
5942.00	31.40	11.80	5854.13	493.31	-742.13	-734.55	14.20	13.02	11.86	MWD
5984.00	35.60	11.30	5889.15	516.02	-737.50	-729.57	10.02	10.00	-1.19	MWD

Precision Directional Services, Inc.

Survey Report

Company: CARRIZO OIL & GAS, INC. Field: Niobrara CONZ'83 Site: Nelson Ranches 1-27-10-59 Pad Well: 3-27-10-59 Wellpath: Original Hole	Date: 05/09/2014 Time: 08:55:19 Page: 3 Co-ordinate(NE) Reference: Well: 3-27-10-59, Grid North Vertical (TVD) Reference: 5167'GL+17'KB 5184.0 Section (VS) Reference: Well (0.00N,0.00E,89.13Azi) Survey Calculation Method: Minimum Curvature Db: Adapti
--	--

Survey

MD ft	Incl deg	Azim bearing	TVD ft	+N/-S ft	+E/-W ft	VS ft	DLS deg/100ft	Build deg/100ft	Turn deg/100ft	Tool/Comment
6026.00	39.00	11.30	5922.55	540.97	-732.51	-724.21	8.10	8.10	0.00	MWD
6069.00	42.00	10.60	5955.25	568.39	-727.21	-718.50	7.06	6.98	-1.63	MWD
6111.00	45.40	12.50	5985.61	596.81	-721.39	-712.24	8.68	8.10	4.52	MWD
6154.00	46.70	17.50	6015.46	626.69	-713.37	-703.77	8.90	3.02	11.63	MWD
6196.00	49.20	24.80	6043.61	655.72	-702.09	-692.05	14.21	5.95	17.38	MWD
6239.00	50.80	30.80	6071.26	684.82	-686.72	-676.25	11.32	3.72	13.95	MWD
6281.00	50.60	37.70	6097.88	711.66	-668.45	-657.57	12.72	-0.48	16.43	MWD
6323.00	50.40	42.40	6124.61	736.46	-647.61	-636.36	8.65	-0.48	11.19	MWD
6366.00	50.80	48.00	6151.92	759.85	-624.05	-612.44	10.10	0.93	13.02	MWD
6409.00	52.00	49.80	6178.74	781.94	-598.73	-586.78	4.30	2.79	4.19	MWD
6451.00	55.00	51.60	6203.72	803.31	-572.60	-560.33	7.93	7.14	4.29	MWD
6493.00	59.20	56.00	6226.54	824.10	-544.14	-531.56	13.31	10.00	10.48	MWD
6529.00	62.21	59.03	6244.16	840.94	-517.66	-504.83	11.12	8.35	8.42	600' Entry
6536.00	62.80	59.60	6247.39	844.11	-512.32	-499.44	11.12	8.46	8.13	MWD
6579.00	64.70	60.90	6266.41	863.25	-478.83	-465.67	5.18	4.42	3.02	MWD
6603.00	65.50	60.90	6276.51	873.83	-459.81	-446.49	3.33	3.33	0.00	MWD
6669.00	72.00	57.90	6300.42	905.15	-406.92	-393.13	10.72	9.85	-4.55	MWD
6714.00	77.00	62.60	6312.45	926.64	-369.29	-355.17	14.99	11.11	10.44	MWD
6761.00	80.00	66.30	6321.82	946.49	-327.74	-313.33	10.01	6.38	7.87	MWD
6804.00	84.10	72.70	6327.78	961.38	-287.88	-273.25	17.55	9.53	14.88	MWD
6849.00	86.40	78.50	6331.51	972.53	-244.46	-229.67	13.82	5.11	12.89	MWD
6940.00	90.00	81.10	6334.36	988.63	-154.97	-139.94	4.88	3.96	2.86	MWD
7030.00	91.50	83.60	6333.19	1000.61	-65.79	-50.59	3.24	1.67	2.78	MWD
7121.00	91.10	84.10	6331.12	1010.35	24.67	40.00	0.70	-0.44	0.55	MWD
7211.00	89.40	83.90	6330.73	1019.76	114.17	129.64	1.90	-1.89	-0.22	MWD
7302.00	90.30	86.00	6330.97	1027.77	204.81	220.39	2.51	0.99	2.31	MWD
7392.00	90.70	90.10	6330.18	1030.83	294.73	310.35	4.58	0.44	4.56	MWD
7483.00	91.50	90.20	6328.43	1030.59	385.72	401.32	0.89	0.88	0.11	MWD
7573.00	88.50	88.10	6328.43	1031.93	475.69	491.30	4.07	-3.33	-2.33	MWD
7663.00	89.20	89.20	6330.24	1034.05	565.65	581.28	1.45	0.78	1.22	MWD
7754.00	88.90	88.50	6331.75	1035.87	656.61	672.27	0.84	-0.33	-0.77	MWD
7844.00	90.70	90.20	6332.06	1036.89	746.60	762.26	2.75	2.00	1.89	MWD
7936.00	90.60	90.80	6331.02	1036.09	838.59	854.23	0.66	-0.11	0.65	MWD
8021.00	90.00	90.80	6330.58	1034.90	923.58	939.19	0.71	-0.71	0.00	MWD
8105.00	90.70	91.30	6330.06	1033.37	1007.57	1023.14	1.02	0.83	0.60	MWD
8190.00	90.60	89.00	6329.10	1033.14	1092.55	1108.11	2.71	-0.12	-2.71	MWD
8276.00	91.00	89.90	6327.90	1033.97	1178.54	1194.10	1.15	0.47	1.05	MWD
8361.00	88.50	89.00	6328.27	1034.78	1263.53	1279.09	3.13	-2.94	-1.06	MWD
8446.00	88.50	88.70	6330.49	1036.49	1348.48	1364.06	0.35	0.00	-0.35	MWD
8531.00	88.40	87.60	6332.79	1039.23	1433.40	1449.02	1.30	-0.12	-1.29	MWD
8616.00	88.90	87.60	6334.79	1042.79	1518.31	1533.97	0.59	0.59	0.00	MWD
8701.00	89.00	89.20	6336.35	1045.16	1603.26	1618.94	1.89	0.12	1.88	MWD
8786.00	90.60	90.10	6336.65	1045.68	1688.25	1703.93	2.16	1.88	1.06	MWD
8871.00	91.10	91.80	6335.39	1044.27	1773.23	1788.88	2.08	0.59	2.00	MWD
8956.00	92.00	91.80	6333.09	1041.60	1858.15	1873.75	1.06	1.06	0.00	MWD
9041.00	90.70	90.60	6331.09	1039.83	1943.11	1958.67	2.08	-1.53	-1.41	MWD
9126.00	89.60	89.50	6330.86	1039.75	2028.10	2043.66	1.83	-1.29	-1.29	MWD
9211.00	88.50	88.50	6332.27	1041.23	2113.08	2128.64	1.75	-1.29	-1.18	MWD
9296.00	90.50	88.80	6333.01	1043.24	2198.05	2213.63	2.38	2.35	0.35	MWD
9381.00	90.80	89.00	6332.05	1044.87	2283.02	2298.63	0.42	0.35	0.24	MWD
9466.00	90.00	87.90	6331.46	1047.17	2367.99	2383.62	1.60	-0.94	-1.29	MWD
9551.00	89.10	86.00	6332.12	1051.69	2452.86	2468.55	2.47	-1.06	-2.24	MWD
9636.00	89.80	86.20	6332.94	1057.47	2537.66	2553.42	0.86	0.82	0.24	MWD
9720.00	90.40	87.60	6332.79	1062.01	2621.53	2637.36	1.81	0.71	1.67	MWD

Precision Directional Services, Inc.

Survey Report

Company: CARRIZO OIL & GAS, INC. Field: Niobrara CONZ'83 Site: Nelson Ranches 1-27-10-59 Pad Well: 3-27-10-59 Wellpath: Original Hole	Date: 05/09/2014 Time: 08:55:19 Page: 4 Co-ordinate(NE) Reference: Well: 3-27-10-59, Grid North Vertical (TVD) Reference: 5167'GL+17'KB 5184.0 Section (VS) Reference: Well (0.00N,0.00E,89.13Azi) Survey Calculation Method: Minimum Curvature Db: Adapti
--	--

Survey

MD ft	Incl deg	Azim bearing	TVD ft	+N/-S ft	+E/-W ft	VS ft	DLS deg/100ft	Build deg/100ft	Turn deg/100ft	Tool/Comment
9805.00	90.00	86.40	6332.50	1066.46	2706.42	2722.30	1.49	-0.47	-1.41	MWD
9890.00	88.70	87.10	6333.46	1071.28	2791.27	2807.22	1.74	-1.53	0.82	MWD
9933.00	88.80	86.90	6334.40	1073.53	2834.20	2850.18	0.52	0.23	-0.47	MWD
9975.00	90.50	87.80	6334.66	1075.47	2876.15	2892.15	4.58	4.05	2.14	MWD
10018.00	90.30	88.50	6334.36	1076.86	2919.13	2935.14	1.69	-0.47	1.63	MWD
10060.00	90.60	88.80	6334.03	1077.85	2961.12	2977.14	1.01	0.71	0.71	MWD
10102.00	92.40	90.80	6332.93	1078.00	3003.10	3019.12	6.41	4.29	4.76	MWD
10145.00	91.90	91.10	6331.31	1077.28	3046.06	3062.07	1.36	-1.16	0.70	MWD
10187.00	91.90	90.60	6329.92	1076.66	3088.03	3104.03	1.19	0.00	-1.19	MWD
10229.00	94.40	90.20	6327.61	1076.37	3129.97	3145.95	6.03	5.95	-0.95	MWD
10272.00	95.20	90.20	6324.02	1076.22	3172.82	3188.79	1.86	1.86	0.00	MWD
10315.00	94.50	89.70	6320.38	1076.26	3215.66	3231.63	2.00	-1.63	-1.16	MWD
10357.00	92.80	90.40	6317.71	1076.22	3257.57	3273.54	4.38	-4.05	1.67	MWD
10400.00	90.70	91.30	6316.39	1075.58	3300.55	3316.50	5.31	-4.88	2.09	MWD
10442.00	89.80	92.30	6316.21	1074.26	3342.52	3358.45	3.20	-2.14	2.38	MWD
10484.00	90.40	92.50	6316.14	1072.50	3384.49	3400.38	1.51	1.43	0.48	MWD
10527.00	89.50	93.20	6316.17	1070.37	3427.43	3443.29	2.65	-2.09	1.63	MWD
10569.00	89.10	93.20	6316.69	1068.02	3469.36	3485.18	0.95	-0.95	0.00	MWD
10611.00	89.20	93.00	6317.31	1065.75	3511.30	3527.08	0.53	0.24	-0.48	MWD
10654.00	89.30	93.20	6317.87	1063.42	3554.23	3569.97	0.52	0.23	0.47	MWD
10696.00	89.60	92.70	6318.28	1061.26	3596.17	3611.87	1.39	0.71	-1.19	MWD
10739.00	89.80	92.20	6318.50	1059.43	3639.13	3654.80	1.25	0.47	-1.16	MWD
10781.00	90.20	91.80	6318.50	1057.96	3681.11	3696.75	1.35	0.95	-0.95	MWD
10824.00	90.00	91.10	6318.43	1056.87	3724.09	3739.71	1.69	-0.47	-1.63	MWD
10866.00	89.60	90.60	6318.57	1056.25	3766.09	3781.69	1.52	-0.95	-1.19	MWD
10909.00	88.50	89.70	6319.29	1056.14	3809.08	3824.68	3.31	-2.56	-2.09	MWD
10951.00	88.10	89.20	6320.53	1056.54	3851.06	3866.66	1.52	-0.95	-1.19	MWD
10993.00	87.90	87.60	6322.00	1057.71	3893.02	3908.63	3.84	-0.48	-3.81	MWD
11036.00	88.10	87.60	6323.50	1059.51	3935.95	3951.59	0.47	0.47	0.00	MWD
11079.00	90.20	87.90	6324.14	1061.20	3978.91	3994.57	4.93	4.88	0.70	MWD
11121.00	90.60	87.40	6323.84	1062.92	4020.88	4036.55	1.52	0.95	-1.19	MWD
11163.00	90.70	87.40	6323.37	1064.83	4062.83	4078.53	0.24	0.24	0.00	MWD
11233.00	90.70	87.40	6322.51	1068.00	4132.75	4148.49	0.00	0.00	0.00	Project

Annotation

MD ft	TVD ft	
6529.00	6244.16	600' Entry