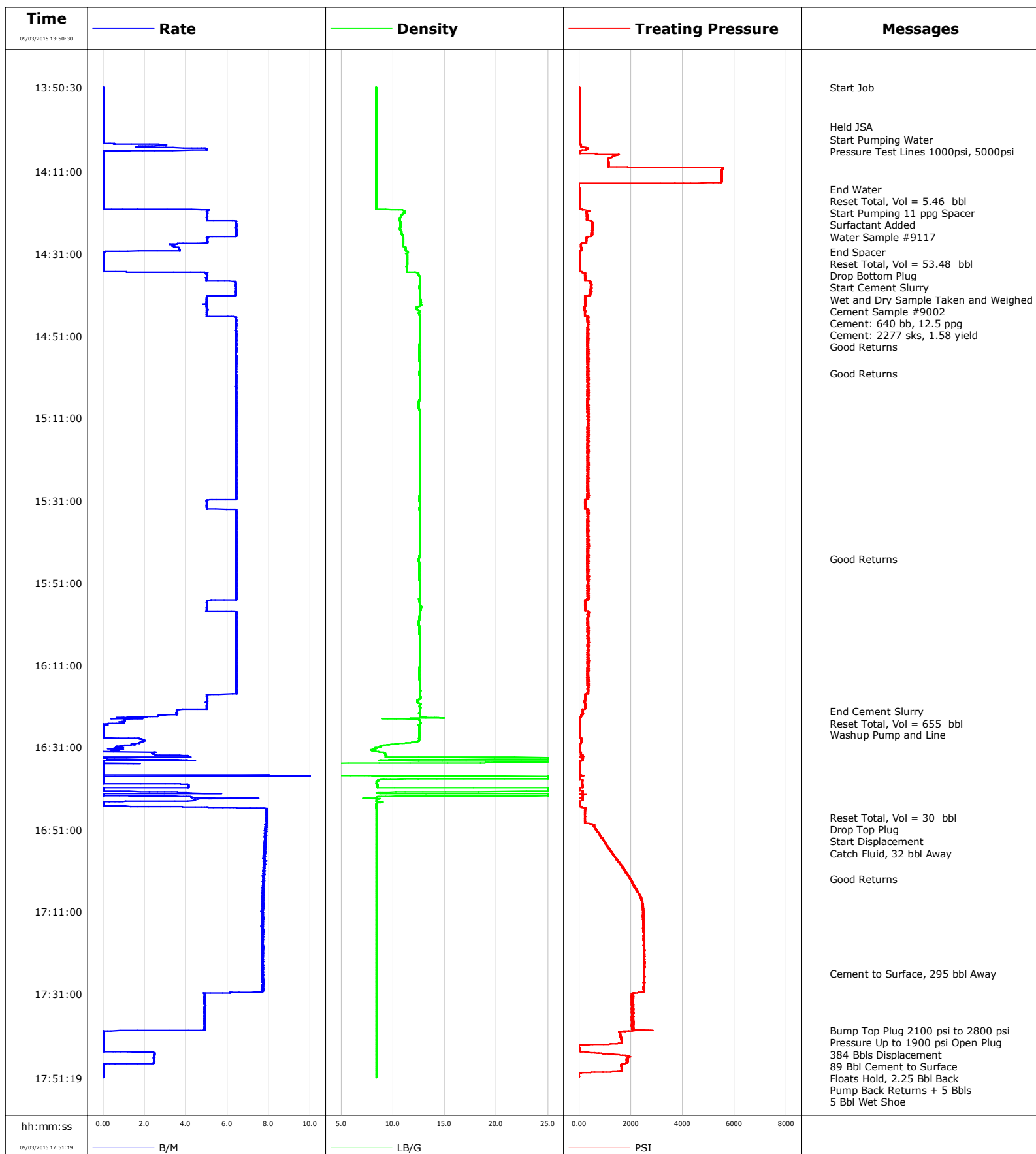


Well Troudt 3
Field Wattenberg
Engineer Ryan Drilling/Ken Sovereign
Country United States

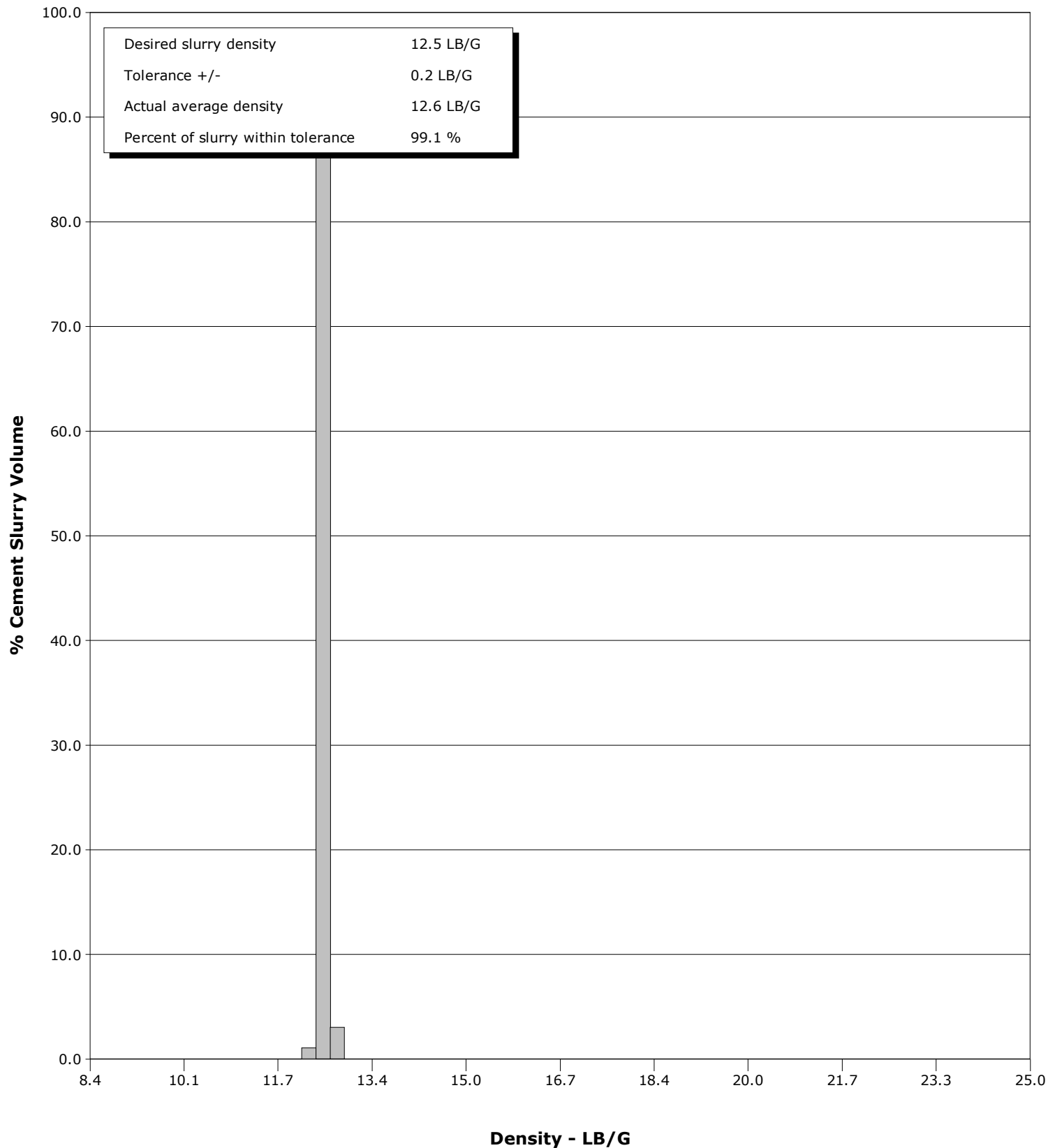
Client Extraction
SIR No. D5VO-00803
Job Type 5.5" Production
Job Date 09-03-2015



Well Troudt 3
Field Wattenberg
Engineer Ryan Drilling/Ken Sovereign
Country United States

Client Extraction
SIR No. D5VO-00803
Job Type 5.5" Production
Job Date 09-03-2015

Cement Slurry - 09/03/2015 14:35:42 to 09/03/2015 16:22:14



Cementing Service Report

					Customer Extraction			Job Number D5VO-00803	
Well Troudtt 3 3			Location (legal) CWY			Schlumberger Location Cheyenne		Job Start Sep/03/2015	
Field Wattenberg		Formation Name/Type Shale		Deviation 90 deg		Bit Size 7.9 in		Well MD 17360.0 ft	
County Weld		State/Province Colorado		BHP psi		BHST 214 degF		BHCT 214 degF	
Well Master 0631646506		API/UWI						Pore Press. Gradient lb/gal	
Rig Name Savanna 802		Drilled For Oil		Service Via Land		Casing/Liner			
						Depth, ft		Size, in	
						Weight, lb/ft		Grade	
Offshore Zone		Well Class New		Well Type Development		1500.0		9.6	
						17355.0		5.5	
						36.0		h40	
						20.0		p110	
Drilling Fluid Type OBM		Max. Density 9.80 lb/gal		Plastic Viscosity cP		Tubing/Drill Pipe			
						T/D		Depth, ft	
						Size, in		Weight, lb/ft	
						Grade		Thread	
Service Line Cementing		Job Type 5.5" Production							
Max. Allowed Tub. Press psi		Max. Allowed Ann. Press psi		WH Connection Single Cement head		Perforations/Open Hole			
						Top, ft		Bottom, ft	
						shot/ft		No. of Shots	
								Total Interval ft	
						ft		ft	
						ft		ft	
						ft		ft	
						Treat Down Casing		Displacement 384.0 bbl	
						Packer Type		Packer Depth ft	
						Tubing Vol. bbl		Casing Vol. 386.0 bbl	
						Annular Vol. 72.0 bbl		Openhole Vol. 482.0 bbl	
Casing/Tubing Secured <input checked="" type="checkbox"/>		1 Hole Vol. Circulated prior to Cement <input checked="" type="checkbox"/>				Casing Tools		Squeeze Job	
Lift Pressure 2100 psi						Shoe Type Float		Squeeze Type	
Pipe Rotated <input type="checkbox"/>		Pipe Reciprocated <input type="checkbox"/>				Shoe Depth 17355.0 ft		Tool Type	
No. Centralizers		Top Plugs 1		Bottom Plugs 1		Stage Tool Type		Tool Depth ft	
Cement Head Type Single						Stage Tool Depth ft		Tail Pipe Size in	
Job Scheduled For Sep/03/2015 10:30		Arrived on Location Sep/03/2015 11:30		Leave Location Sep/03/2015 19:00		Collar Type Float		Tail Pipe Depth ft	
						Collar Depth 17300.0 ft		Sqz. Total Vol. bbl	
Date	Time 24-hr clock	Treating Pressure PSI	Flow Rate B/M	Density LB/G	Volume BBL	Mix Density LB/G	Message		
09/03/2015	13:50:30	5	0.0	8.39	0.0	8.35	Started Acquisition		
09/03/2015	13:50:31	5	0.0	8.39	0.0	8.36	Start Job		
09/03/2015	13:51:30	5	0.0	8.39	0.0	8.35			
09/03/2015	13:52:30	4	0.0	8.39	0.0	8.36			
09/03/2015	13:53:30	4	0.0	8.39	0.0	8.35			
09/03/2015	13:54:30	4	0.0	8.39	0.0	8.36			
09/03/2015	13:55:30	4	0.0	8.39	0.0	8.36			
09/03/2015	13:56:30	4	0.0	8.39	0.0	8.36			
09/03/2015	13:57:30	4	0.0	8.39	0.0	8.36			
09/03/2015	13:58:30	4	0.0	8.39	0.0	8.35			
09/03/2015	13:59:30	4	0.0	8.39	0.0	8.35			
09/03/2015	14:00:05	5	0.0	8.39	0.0	8.35	Held JSA		
09/03/2015	14:00:30	5	0.0	8.39	0.0	8.36			
09/03/2015	14:01:30	5	0.0	8.39	0.0	8.35			
09/03/2015	14:02:30	5	0.0	8.39	0.0	8.36			
09/03/2015	14:03:21	5	0.0	8.39	0.0	8.36	Start Pumping Water		
09/03/2015	14:03:30	5	0.0	8.39	0.0	8.36			
09/03/2015	14:04:30	63	3.0	8.39	0.3	8.36			
09/03/2015	14:05:26	326	5.0	8.39	3.0	8.34	Pressure Test Lines 1000psi, 5000psi		
09/03/2015	14:05:30	332	5.0	8.39	3.3	8.36			
09/03/2015	14:06:30	37	0.0	8.40	5.5	8.36			

Well			Field		Job Start		Customer		Job Number
Troudts 3 3			Wattenberg		Sep/03/2015		Extraction		D5VO-00803
Date	Time 24-hr clock	Treating Pressure PSI	Flow Rate B/M	Density LB/G	Volume BBL	Mix Density LB/G	Message		
09/03/2015	14:08:30	1128	0.0	8.39	5.5	8.36			
09/03/2015	14:09:30	1135	0.0	8.39	5.5	8.35			
09/03/2015	14:10:30	5519	0.0	8.39	5.5	8.35			
09/03/2015	14:11:30	5501	0.0	8.39	5.5	8.35			
09/03/2015	14:12:30	5503	0.0	8.39	5.5	8.35			
09/03/2015	14:13:30	5508	0.0	8.39	5.5	8.35			
09/03/2015	14:14:30	-9	0.0	8.39	5.5	8.35			
09/03/2015	14:15:22	3	0.0	8.39	0.0	8.37	End Water		
09/03/2015	14:15:24	3	0.0	8.39	0.0	8.37	Reset Total, Vol = 5.46 bbl		
09/03/2015	14:15:30	4	0.0	8.39	0.0	8.37			
09/03/2015	14:16:30	10	0.0	8.39	0.0	11.27			
09/03/2015	14:17:30	12	0.0	8.40	0.0	13.35			
09/03/2015	14:18:30	13	0.0	8.39	0.0	11.24			
09/03/2015	14:19:30	14	0.0	8.39	0.0	10.99			
09/03/2015	14:20:21	133	5.1	10.51	0.4	10.99	Start Pumping 11 ppg Spacer		
09/03/2015	14:20:23	160	5.1	10.70	0.6	10.98	Surfactant Added		
09/03/2015	14:20:30	380	5.0	11.06	1.2	10.96			
09/03/2015	14:21:30	322	5.0	10.87	6.2	10.88			
09/03/2015	14:22:30	304	5.0	10.68	11.2	11.12			
09/03/2015	14:22:45	305	5.0	10.64	12.5	11.13	Water Sample #9117		
09/03/2015	14:23:30	515	6.4	10.73	16.9	11.30			
09/03/2015	14:24:30	511	6.4	10.70	23.4	11.19			
09/03/2015	14:25:30	500	6.4	10.78	29.8	11.24			
09/03/2015	14:26:30	517	6.4	10.90	36.2	11.14			
09/03/2015	14:27:30	273	5.0	10.99	41.7	11.13			
09/03/2015	14:28:30	154	4.0	10.98	46.8	11.11			
09/03/2015	14:29:30	94	3.6	11.22	50.2	11.11			
09/03/2015	14:30:30	-1	0.1	11.42	53.5	11.31			
09/03/2015	14:30:38	1	0.0	11.43	53.5	11.13	End Spacer		
09/03/2015	14:30:40	1	0.0	11.43	53.5	11.12	Reset Total, Vol = 53.48 bbl		
09/03/2015	14:31:00	2	0.0	11.28	53.5	11.11	Drop Bottom Plug		
09/03/2015	14:31:30	4	0.0	11.39	53.5	9.34			
09/03/2015	14:32:30	4	0.0	11.39	53.5	9.47			
09/03/2015	14:33:30	4	0.0	11.38	53.5	12.45			
09/03/2015	14:34:30	4	0.0	11.34	53.5	12.57			
09/03/2015	14:35:30	123	4.2	11.87	53.7	12.34			
09/03/2015	14:35:42	232	5.0	12.46	54.6	12.08	Start Cement Slurry		
09/03/2015	14:35:50	212	5.0	12.45	55.3	12.02	Wet and Dry Sample Taken and Weighed		
09/03/2015	14:35:51	202	5.0	12.45	55.4	12.05	Cement Sample #9002		
09/03/2015	14:35:52	229	4.9	12.45	55.5	12.05	Cement: 640 bb, 12.5 ppg		
09/03/2015	14:35:53	234	4.9	12.45	55.6	12.10	Cement: 2277 sks, 1.58 yield		
09/03/2015	14:36:30	233	5.0	12.56	58.6	12.81			
09/03/2015	14:37:22	247	5.0	12.57	63.0	12.52	Good Returns		
09/03/2015	14:37:30	254	5.0	12.58	63.7	12.51			
09/03/2015	14:38:30	451	6.4	12.58	69.8	12.39			
09/03/2015	14:39:30	486	6.4	12.56	76.2	12.44			
09/03/2015	14:40:30	457	6.4	12.58	82.6	12.40			
09/03/2015	14:41:30	232	5.0	12.63	88.6	12.60			
09/03/2015	14:42:30	232	5.0	12.69	93.6	12.64			
09/03/2015	14:43:30	230	5.0	12.72	98.6	12.62			
09/03/2015	14:44:30	209	5.0	12.29	103.6	12.75			
09/03/2015	14:45:30	223	5.0	12.50	108.6	12.36			
09/03/2015	14:46:30	381	6.4	12.59	113.9	12.44			
09/03/2015	14:47:30	336	6.4	12.60	120.3	12.52			

Well			Field		Job Start		Customer		Job Number
Troudts 3 3			Wattenberg		Sep/03/2015		Extraction		D5VO-00803
Date	Time 24-hr clock	Treating Pressure PSI	Flow Rate B/M	Density LB/G	Volume BBL	Mix Density LB/G	Message		
09/03/2015	14:49:30	354	6.4	12.59	133.2	12.42			
09/03/2015	14:50:30	381	6.4	12.58	139.6	12.48			
09/03/2015	14:51:30	332	6.4	12.59	146.0	12.48			
09/03/2015	14:52:30	325	6.4	12.57	152.4	12.38			
09/03/2015	14:53:30	325	6.4	12.56	158.8	12.41			
09/03/2015	14:54:30	338	6.4	12.55	165.2	12.41			
09/03/2015	14:55:30	358	6.4	12.53	171.7	12.42			
09/03/2015	14:56:30	337	6.4	12.54	178.1	12.44			
09/03/2015	14:57:30	333	6.4	12.57	184.5	12.50			
09/03/2015	14:58:30	325	6.4	12.58	190.9	12.42			
09/03/2015	14:59:30	337	6.4	12.56	197.3	12.42			
09/03/2015	15:00:06	316	6.4	12.56	201.2	12.42	Good Returns		
09/03/2015	15:00:30	365	6.4	12.56	203.8	12.45			
09/03/2015	15:01:30	364	6.4	12.56	210.2	12.42			
09/03/2015	15:02:30	335	6.4	12.58	216.6	12.39			
09/03/2015	15:03:30	329	6.4	12.58	223.0	12.49			
09/03/2015	15:04:30	330	6.4	12.59	229.4	12.48			
09/03/2015	15:05:30	333	6.4	12.60	235.9	12.34			
09/03/2015	15:06:30	346	6.4	12.56	242.3	12.23			
09/03/2015	15:07:30	362	6.4	12.46	248.7	12.34			
09/03/2015	15:08:30	321	6.4	12.48	255.1	12.45			
09/03/2015	15:09:30	342	6.4	12.57	261.6	12.50			
09/03/2015	15:10:30	326	6.4	12.58	268.0	12.52			
09/03/2015	15:11:30	355	6.4	12.60	274.4	12.44			
09/03/2015	15:12:30	362	6.4	12.60	280.8	12.39			
09/03/2015	15:13:30	352	6.4	12.58	287.2	12.43			
09/03/2015	15:14:30	322	6.4	12.57	293.7	12.44			
09/03/2015	15:15:30	315	6.4	12.57	300.1	12.46			
09/03/2015	15:16:30	337	6.4	12.58	306.5	12.46			
09/03/2015	15:17:30	341	6.4	12.58	312.9	12.49			
09/03/2015	15:18:30	378	6.4	12.58	319.3	12.48			
09/03/2015	15:19:30	328	6.4	12.58	325.8	12.44			
09/03/2015	15:20:30	316	6.4	12.58	332.2	12.39			
09/03/2015	15:21:30	350	6.4	12.57	338.6	12.42			
09/03/2015	15:22:30	337	6.4	12.57	345.0	12.42			
09/03/2015	15:23:30	383	6.4	12.57	351.5	12.46			
09/03/2015	15:24:30	335	6.4	12.59	357.9	12.48			
09/03/2015	15:25:30	332	6.4	12.59	364.3	12.44			
09/03/2015	15:26:30	327	6.4	12.57	370.7	12.43			
09/03/2015	15:27:30	322	6.4	12.56	377.2	12.47			
09/03/2015	15:28:30	367	6.4	12.57	383.6	12.46			
09/03/2015	15:29:30	353	6.4	12.57	390.0	12.40			
09/03/2015	15:30:30	334	6.4	12.56	396.4	12.31			
09/03/2015	15:31:30	248	5.0	12.58	401.8	12.53			
09/03/2015	15:32:30	239	5.0	12.65	406.9	12.57			
09/03/2015	15:33:30	333	6.4	12.57	412.4	12.50			
09/03/2015	15:34:30	327	6.4	12.58	418.8	12.44			
09/03/2015	15:35:30	336	6.4	12.56	425.2	12.44			
09/03/2015	15:36:30	352	6.4	12.57	431.7	12.45			
09/03/2015	15:37:30	333	6.4	12.57	438.1	12.44			
09/03/2015	15:38:30	326	6.4	12.57	444.5	12.46			
09/03/2015	15:39:30	367	6.4	12.57	451.0	12.46			
09/03/2015	15:40:30	336	6.4	12.58	457.4	12.46			
09/03/2015	15:41:30	336	6.4	12.58	463.8	12.47			

Well			Field		Job Start		Customer		Job Number
Troud 3 3			Wattenberg		Sep/03/2015		Extraction		D5VO-00803
Date	Time 24-hr clock	Treating Pressure PSI	Flow Rate B/M	Density LB/G	Volume BBL	Mix Density LB/G	Message		
09/03/2015	15:43:30	367	6.4	12.57	476.7	12.46			
09/03/2015	15:44:30	360	6.4	12.56	483.1	12.44			
09/03/2015	15:45:10	347	6.4	12.51	487.4	12.52	Good Returns		
09/03/2015	15:45:30	338	6.4	12.50	489.5	12.52			
09/03/2015	15:46:30	321	6.4	12.52	496.0	12.44			
09/03/2015	15:47:30	335	6.4	12.54	502.4	12.44			
09/03/2015	15:48:30	374	6.4	12.54	508.8	12.46			
09/03/2015	15:49:30	330	6.4	12.55	515.3	12.45			
09/03/2015	15:50:30	328	6.4	12.57	521.7	12.53			
09/03/2015	15:51:30	329	6.4	12.59	528.1	12.50			
09/03/2015	15:52:30	364	6.4	12.59	534.6	12.48			
09/03/2015	15:53:30	340	6.4	12.60	541.0	12.48			
09/03/2015	15:54:30	328	6.4	12.59	547.4	12.40			
09/03/2015	15:55:30	226	5.0	12.54	553.4	12.50			
09/03/2015	15:56:30	235	5.0	12.63	558.4	12.76			
09/03/2015	15:57:30	241	5.0	12.69	563.4	12.56			
09/03/2015	15:58:30	360	6.4	12.62	569.3	12.40			
09/03/2015	15:59:30	329	6.4	12.54	575.7	12.31			
09/03/2015	16:00:30	334	6.4	12.51	582.1	12.27			
09/03/2015	16:01:30	332	6.4	12.52	588.6	12.44			
09/03/2015	16:02:30	354	6.4	12.54	595.0	12.46			
09/03/2015	16:03:30	326	6.4	12.56	601.4	12.50			
09/03/2015	16:04:30	352	6.4	12.57	607.9	12.50			
09/03/2015	16:05:30	334	6.4	12.58	614.3	12.46			
09/03/2015	16:06:30	335	6.4	12.58	620.6	12.46			
09/03/2015	16:07:30	392	6.4	12.57	627.1	12.44			
09/03/2015	16:08:30	342	6.4	12.58	633.6	12.51			
09/03/2015	16:09:30	329	6.4	12.59	640.0	12.47			
09/03/2015	16:10:30	346	6.4	12.59	646.4	12.46			
09/03/2015	16:11:30	316	6.4	12.56	652.9	12.55			
09/03/2015	16:12:30	374	6.4	12.54	659.3	12.43			
09/03/2015	16:13:30	333	6.4	12.55	665.7	12.43			
09/03/2015	16:14:30	344	6.4	12.56	672.2	12.48			
09/03/2015	16:15:30	355	6.4	12.56	678.6	12.46			
09/03/2015	16:16:30	344	6.4	12.60	685.0	12.52			
09/03/2015	16:17:30	343	6.4	12.57	691.5	12.36			
09/03/2015	16:18:30	236	5.0	12.64	697.3	12.57			
09/03/2015	16:19:30	215	5.0	12.43	702.3	11.74			
09/03/2015	16:20:30	237	5.0	12.69	707.3	12.88			
09/03/2015	16:21:30	243	5.0	12.65	712.3	12.47			
09/03/2015	16:22:14	155	3.6	12.61	715.3	12.75	End Cement Slurry		
09/03/2015	16:22:30	147	3.6	12.65	716.3	12.39			
09/03/2015	16:23:30	65	2.6	12.59	719.5	12.27			
09/03/2015	16:24:15	31	1.0	12.54	720.5	12.38	Reset Total, Vol = 655 bbl		
09/03/2015	16:24:30	30	1.0	12.57	720.8	12.38			
09/03/2015	16:25:30	5	0.0	12.61	721.5	12.62			
09/03/2015	16:26:30	14	0.0	12.53	721.5	12.41			
09/03/2015	16:26:57	13	0.0	12.53	721.5	12.40	Washup Pump and Line		
09/03/2015	16:27:30	10	0.0	12.53	721.5	9.42			
09/03/2015	16:28:30	14	0.0	12.53	721.5	9.34			
09/03/2015	16:29:30	89	2.0	12.50	722.9	9.27			
09/03/2015	16:30:30	25	1.3	9.14	724.5	9.27			
09/03/2015	16:31:30	15	0.7	8.28	725.3	9.27			
09/03/2015	16:32:30	63	2.4	9.23	726.6	9.23			

Well			Field		Job Start		Customer		Job Number
Troutd 3 3			Wattenberg		Sep/03/2015		Extraction		D5VO-00803
Date	Time 24-hr clock	Treating Pressure PSI	Flow Rate B/M	Density LB/G	Volume BBL	Mix Density LB/G	Message		
09/03/2015	16:34:30	14	0.0	25.00	730.9	9.14			
09/03/2015	16:35:30	11	0.0	0.01	731.0	9.05			
09/03/2015	16:36:30	13	0.0	0.01	731.0	8.52			
09/03/2015	16:37:30	15	0.0	0.01	731.0	8.51			
09/03/2015	16:38:30	13	0.0	25.00	732.5	8.49			
09/03/2015	16:39:30	116	0.0	8.40	732.5	8.49			
09/03/2015	16:40:30	135	4.1	8.52	735.0	8.48			
09/03/2015	16:41:30	140	0.0	25.00	736.3	8.46			
09/03/2015	16:42:30	9	0.0	25.00	738.4	7.64			
09/03/2015	16:43:30	135	5.1	8.80	741.4	1.42			
09/03/2015	16:44:30	9	0.0	8.47	0.0	0.01			
09/03/2015	16:45:30	104	4.7	8.41	0.5	0.01			
09/03/2015	16:46:30	226	7.9	8.40	7.8	0.01			
09/03/2015	16:47:30	220	7.9	8.40	15.7	0.01			
09/03/2015	16:48:00	230	7.9	8.40	19.6	0.01	Reset Total, Vol = 30 bbl		
09/03/2015	16:48:01	222	7.9	8.40	19.8	0.01	Drop Top Plug		
09/03/2015	16:48:02	227	7.9	8.40	19.9	0.01	Start Displacement		
09/03/2015	16:48:30	228	7.9	8.40	23.6	0.01			
09/03/2015	16:49:30	228	7.9	8.40	31.5	0.01			
09/03/2015	16:50:19	583	7.8	8.40	37.9	0.01	Catch Fluid, 32 bbl Away		
09/03/2015	16:50:30	610	7.9	8.40	39.3	0.01			
09/03/2015	16:51:30	720	7.9	8.40	47.2	0.01			
09/03/2015	16:52:30	815	7.8	8.40	55.0	0.01			
09/03/2015	16:53:30	939	7.8	8.40	62.9	0.01			
09/03/2015	16:54:30	1031	7.8	8.40	70.7	0.01			
09/03/2015	16:55:30	1144	7.8	8.40	78.5	0.01			
09/03/2015	16:56:30	1272	7.8	8.40	86.3	0.01			
09/03/2015	16:57:30	1353	7.8	8.40	94.1	0.01			
09/03/2015	16:58:30	1475	7.8	8.40	101.9	0.01			
09/03/2015	16:59:30	1618	7.8	8.40	109.6	0.01			
09/03/2015	17:00:30	1713	7.8	8.41	117.4	0.01			
09/03/2015	17:01:30	1821	7.8	8.40	125.2	0.01			
09/03/2015	17:02:30	1935	7.8	8.40	132.9	0.01			
09/03/2015	17:02:57	1979	7.7	8.40	136.4	0.01	Good Returns		
09/03/2015	17:03:30	2024	7.8	8.40	140.7	0.01			
09/03/2015	17:04:30	2113	7.7	8.40	148.4	0.01			
09/03/2015	17:05:30	2196	7.8	8.41	156.1	0.01			
09/03/2015	17:06:30	2313	7.7	8.40	163.9	0.01			
09/03/2015	17:07:30	2382	7.7	8.41	171.6	0.01			
09/03/2015	17:08:30	2420	7.7	8.40	179.3	0.01			
09/03/2015	17:09:30	2442	7.7	8.40	187.0	0.01			
09/03/2015	17:10:30	2475	7.7	8.40	194.7	0.01			
09/03/2015	17:11:30	2490	7.7	8.40	202.4	0.01			
09/03/2015	17:12:30	2465	7.7	8.40	210.1	0.01			
09/03/2015	17:13:30	2498	7.7	8.40	217.8	0.01			
09/03/2015	17:14:30	2503	7.7	8.40	225.5	0.01			
09/03/2015	17:15:30	2490	7.7	8.40	233.2	0.01			
09/03/2015	17:16:30	2515	7.7	8.40	240.9	0.01			
09/03/2015	17:17:30	2517	7.7	8.40	248.6	0.01			
09/03/2015	17:18:30	2511	7.7	8.40	256.3	0.01			
09/03/2015	17:19:30	2512	7.8	8.40	264.0	0.01			
09/03/2015	17:20:30	2515	7.7	8.40	271.7	0.01			
09/03/2015	17:21:30	2513	7.7	8.40	279.4	0.01			
09/03/2015	17:22:30	2512	7.7	8.40	287.1	0.01			

Well			Field		Job Start		Customer		Job Number	
Troudtt 3 3			Wattenberg		Sep/03/2015		Extraction		D5VO-00803	
Date	Time 24-hr clock	Treating Pressure PSI	Flow Rate B/M	Density LB/G	Volume BBL	Mix Density LB/G	Message			
09/03/2015	17:24:30	2524	7.7	8.40	302.5	0.01				
09/03/2015	17:25:30	2517	7.7	8.40	310.2	0.01				
09/03/2015	17:25:51	2526	7.7	8.40	312.9	0.01	Cement to Surface, 295 bbl Away			
09/03/2015	17:26:30	2519	7.7	8.40	317.9	0.01				
09/03/2015	17:27:30	2525	7.7	8.40	325.6	0.01				
09/03/2015	17:28:30	2523	7.7	8.40	333.3	0.01				
09/03/2015	17:29:30	2509	7.7	8.40	341.0	0.01				
09/03/2015	17:30:30	2449	7.5	8.40	348.7	0.01				
09/03/2015	17:31:30	2067	4.9	8.40	354.0	0.01				
09/03/2015	17:32:30	2067	4.9	8.40	358.9	0.01				
09/03/2015	17:33:30	2054	4.9	8.40	363.8	0.01				
09/03/2015	17:34:30	2021	4.9	8.40	368.7	0.01				
09/03/2015	17:35:30	2108	4.9	8.40	373.6	0.01				
09/03/2015	17:36:30	2050	4.9	8.40	378.5	0.01				
09/03/2015	17:37:30	2091	4.9	8.40	383.4	0.01				
09/03/2015	17:38:30	2083	4.9	8.40	388.3	0.01				
09/03/2015	17:39:30	2119	4.9	8.40	393.2	0.01				
09/03/2015	17:39:49	2763	4.7	8.40	394.8	0.01	Bump Top Plug 2100 psi to 2800 psi			
09/03/2015	17:39:50	2687	4.1	8.40	394.9	0.01	Pressure Up to 1900 psi Open Plug			
09/03/2015	17:40:14	1574	0.0	8.41	395.0	0.01	384 Bbls Displacement			
09/03/2015	17:40:30	1585	0.0	8.41	395.0	0.01				
09/03/2015	17:40:45	1575	0.0	8.41	395.0	0.01	89 Bbl Cement to Surface			
09/03/2015	17:41:30	1608	0.0	8.41	395.0	0.01				
09/03/2015	17:42:30	1651	0.0	8.41	395.0	0.01				
09/03/2015	17:43:30	-9	0.0	8.41	395.0	0.01				
09/03/2015	17:43:38	-6	0.0	8.41	395.0	0.01	Floats Hold, 2.25 Bbl Back			
09/03/2015	17:44:30	16	0.0	8.41	395.0	0.01				
09/03/2015	17:44:59	63	0.0	8.41	395.0	0.01	Pump Back Returns + 5 Bbls			
09/03/2015	17:45:17	597	2.5	8.41	395.6	0.01	5 Bbl Wet Shoe			
09/03/2015	17:45:30	1020	2.5	8.40	396.1	0.01				
09/03/2015	17:46:30	1893	2.5	8.40	398.6	0.01				
09/03/2015	17:47:30	1837	2.5	8.40	401.0	0.01				
09/03/2015	17:48:30	1623	0.0	8.41	402.0	0.01				
09/03/2015	17:49:30	1653	0.0	8.41	402.0	0.01				
09/03/2015	17:50:25	-6	0.0	8.40	402.0	0.01	End Displacement			
09/03/2015	17:50:27	-4	0.0	8.40	402.0	0.01	Floats Hold, 2.25 Bbl Back			
09/03/2015	17:50:30	-4	0.0	8.41	402.0	0.01				

Post Job Summary

Average Pump Rates, bbl/min					Volume of Fluid Injected, bbl				
Slurry 6.1	N2	Mud	Maximum Rate 10.6	Total Slurry 655.0	Mud 0.0	Spacer 53.0	N2		
Treating Pressure Summary, psi					Breakdown Fluid				
Maximum 5544	Final -1	Average 769	Bump Plug to 2800	Breakdown	Type	Volume bbl	Density lb/gal		
Avg. N2 Percent %		Designed Slurry Volume 639.8 bbl		Displacement 384.0 bbl	Mix Water Temp 75 degF	Cement Circulated to Surface? <input checked="" type="checkbox"/>	Volume 89.0 bbl		
						Washed Thru Perfs <input type="checkbox"/>	To ft		
Customer or Authorized Representative Sean McIntyre			Schlumberger Supervisor Ryan Drilling/Ken Sovereign			Circulation Lost <input type="checkbox"/>	Job Completed <input checked="" type="checkbox"/>		
						-	-		