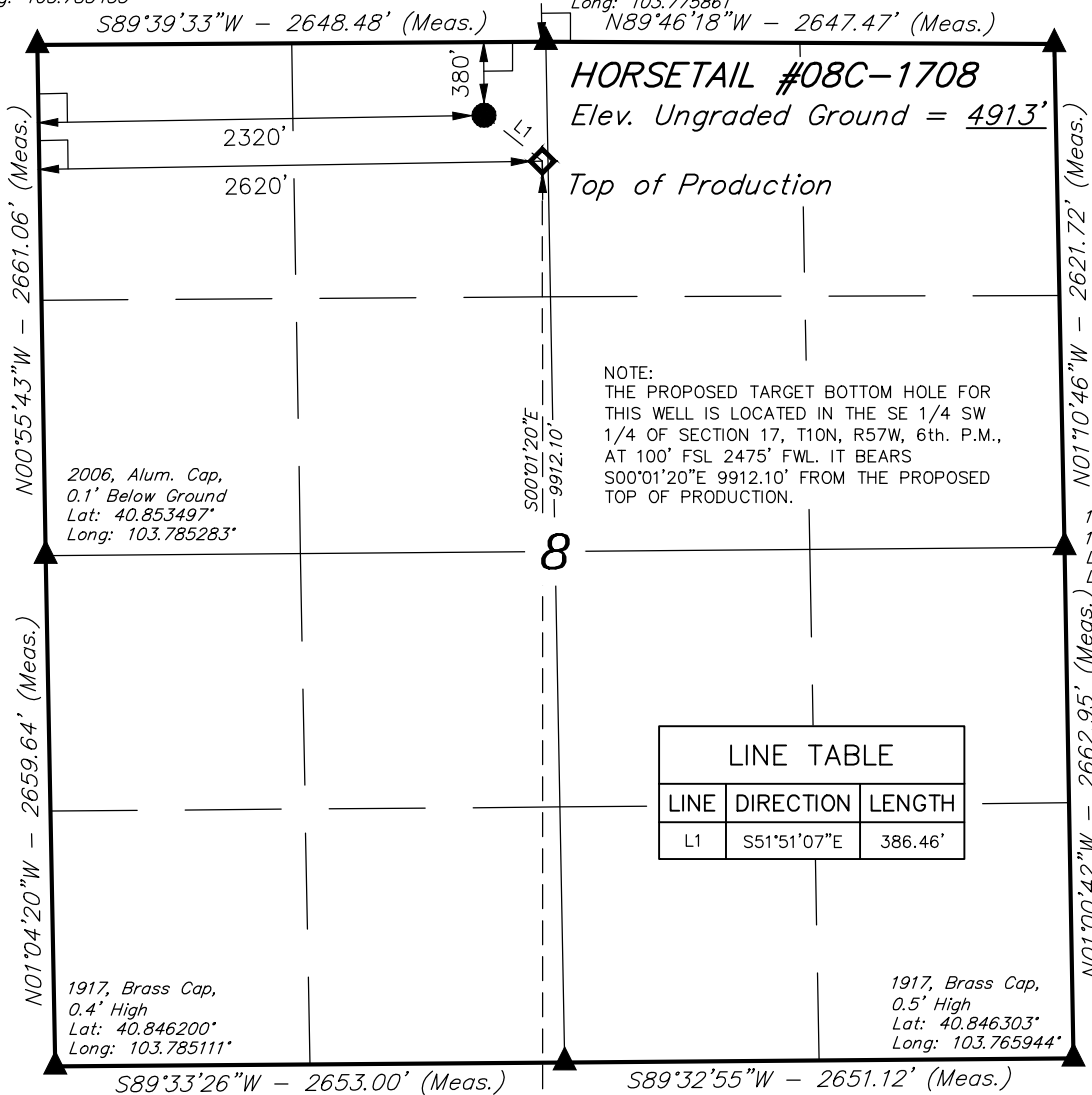


T10N, R57W, 6th. P.M.

2006, Alum. Cap,  
0.9' Below Ground  
Lat: 40.860797°  
Long: 103.785433°

2006, Alum. Cap,  
0.8' Below Ground  
Lat: 40.860836°  
Long: 103.775861°

1917, Brass Cap,  
1.2' High  
Lat: 40.860800°  
Long: 103.766292°



NOTE:  
THE PROPOSED TARGET BOTTOM HOLE FOR  
THIS WELL IS LOCATED IN THE SE 1/4 SW  
1/4 OF SECTION 17, T10N, R57W, 6th. P.M.,  
AT 100' FSL 2475' FWL. IT BEARS  
S00°01'20"E 9912.10' FROM THE PROPOSED  
TOP OF PRODUCTION.

WHITING OIL & GAS CORP.

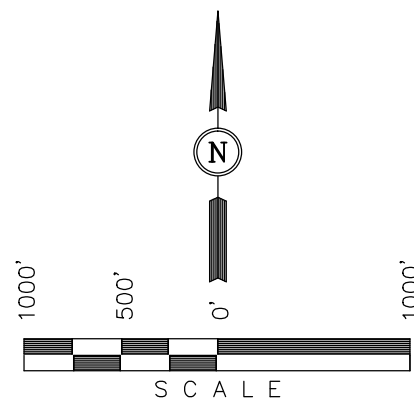
Well location, HORSETAIL #08C-1708, (SURFACE  
LOCATION), located as shown in the NE 1/4 NW  
1/4 of Section 8, T10N, R57W, 6th. P.M., Weld  
County, Colorado.

BASIS OF ELEVATION

SPOT ELEVATION LOCATED AT THE NORTHEAST CORNER OF  
SECTION 15, T9N, R58W, 6th P.M. TAKEN FROM THE  
GATEHOOK SPRING, QUADRANGLE, COLORADO, WELD COUNTY,  
7.5 MINUTE QUAD (TOPOGRAPHIC MAP) PUBLISHED BY THE  
UNITED STATES DEPARTMENT OF THE INTERIOR, GEOLOGICAL  
SURVEY. SAID ELEVATION IS MARKED AS BEING 4679 FEET.

BASIS OF BEARINGS

BASIS OF BEARINGS IS A G.P.S. OBSERVATION.



CERTIFICATION

THIS IS TO CERTIFY THAT THE ABOVE PLAT WAS PREPARED FROM  
FIELD NOTES OF ACTUAL SURVEYS MADE BY ME OR UNDER MY  
SUPERVISION AND THAT THE SAME ARE TRUE AND CORRECT TO THE  
BEST OF MY KNOWLEDGE AND BELIEF.

REGISTERED LAND SURVEYOR  
REGISTRATION NO. 28285  
STATE OF COLORADO

REV: 10-21-15 M.O.E.

**UINTAH ENGINEERING & LAND SURVEYING**  
85 SOUTH 200 EAST - VERNAL, UTAH 84078  
(435) 789-1017

LEGEND:

- = 90° SYMBOL
- = PROPOSED WELLHEAD.
- ◆ = TOP OF PRODUCTION.
- = TARGET BOTTOM HOLE.
- ▲ = SECTION CORNERS LOCATED.

Target Bottom Hole

PDOP = 1.6

NAD 83 (TOP OF PRODUCTION)	NAD 83 (SURFACE LOCATION)
LATITUDE = 40°51'32.87" (40.859131)	LATITUDE = 40°51'35.23" (40.859786)
LONGITUDE = 103°46'33.34" (103.775928)	LONGITUDE = 103°46'37.30" (103.777028)
NAD 27 (TOP OF PRODUCTION)	NAD 27 (SURFACE LOCATION)
LATITUDE = 40°51'32.93" (40.859147)	LATITUDE = 40°51'35.29" (40.859803)
LONGITUDE = 103°46'31.54" (103.775428)	LONGITUDE = 103°46'35.49" (103.776525)

SCALE 1" = 1000'	DATE SURVEYED: 11-25-13	DATE DRAWN: 12-17-13
PARTY DALLAS NIELSEN G.W. S.F.	REFERENCES G.L.O. PLAT	
WEATHER COLD	FILE WHITING OIL & GAS CORP.	

T10N, R57W, 6th. P.M.

WHITING OIL & GAS CORP.

1917, Brass Cap,  
0.5' High  
Lat: 40.846303°  
Long: 103.765944°

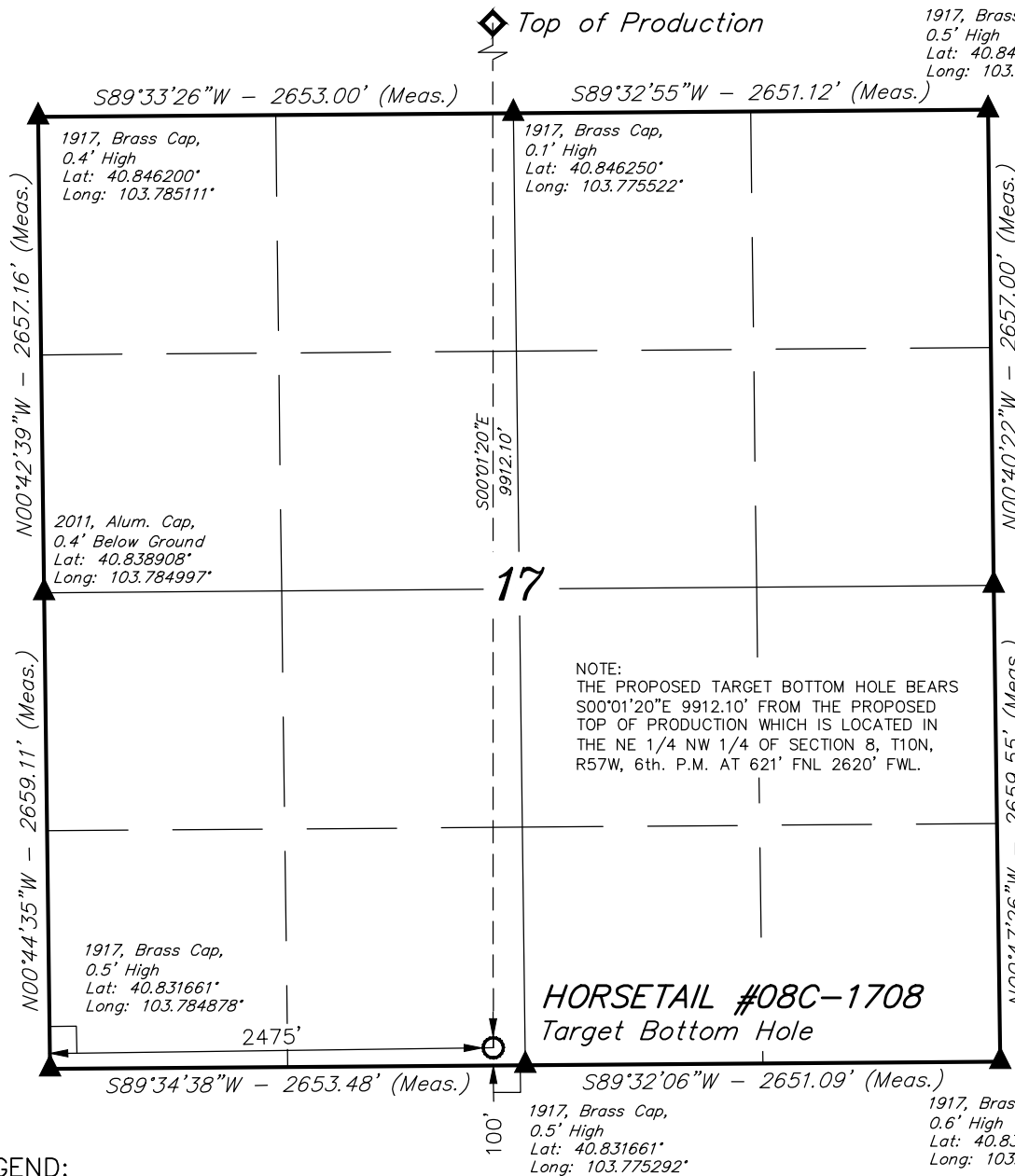
Well location, HORSETAIL #08C-1708 (TARGET BOTTOM HOLE), located as shown in the SE 1/4 SW 1/4 of Section 17, T10N, R57W, 6th. P.M., Weld County, Colorado.

BASIS OF ELEVATION

SPOT ELEVATION LOCATED AT THE NORTHEAST CORNER OF SECTION 15, T9N, R58W, 6th P.M. TAKEN FROM THE GATEHOOK SPRING, QUADRANGLE, COLORADO, WELD COUNTY, 7.5 MINUTE QUAD (TOPOGRAPHIC MAP) PUBLISHED BY THE UNITED STATES DEPARTMENT OF THE INTERIOR, GEOLOGICAL SURVEY. SAID ELEVATION IS MARKED AS BEING 4679 FEET.

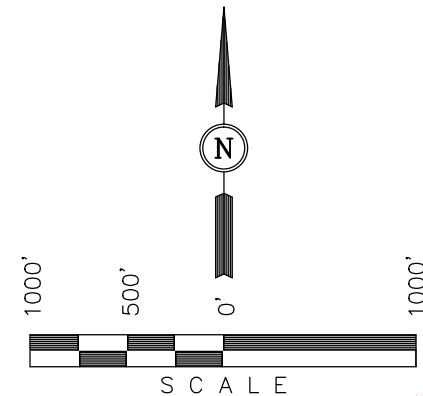
BASIS OF BEARINGS

BASIS OF BEARINGS IS A G.P.S. OBSERVATION.



NOTE:  
THE PROPOSED TARGET BOTTOM HOLE BEARS  
S00°01'20"E 9912.10' FROM THE PROPOSED  
TOP OF PRODUCTION WHICH IS LOCATED IN  
THE NE 1/4 NW 1/4 OF SECTION 8, T10N,  
R57W, 6th. P.M. AT 621' FNL 2620' FWL.

**HORSETAIL #08C-1708**  
Target Bottom Hole



CERTIFICATION

THIS IS TO CERTIFY THAT THE ABOVE PLAT WAS PREPARED FROM  
FIELD NOTES OF ACTUAL SURVEYS MADE BY ME OR UNDER MY  
SUPERVISION AND THAT THE SAME ARE TRUE AND CORRECT TO THE  
BEST OF MY KNOWLEDGE AND BELIEF.

REGISTERED LAND SURVEYOR  
REGISTRATION NO. 28285  
STATE OF COLORADO

REV: 10-21-15 M.O.E.

**UINTAH ENGINEERING & LAND SURVEYING**  
85 SOUTH 200 EAST - VERNAL, UTAH 84078  
(435) 789-1017

LEGEND:

- └─┘ = 90° SYMBOL
- = PROPOSED WELLHEAD.
- ◆ = TOP OF PRODUCTION.
- = TARGET BOTTOM HOLE.
- ▲ = SECTION CORNERS LOCATED.

<b>NAD 83 (TARGET BOTTOM HOLE)</b>	
LATITUDE = 40°49'54.95" (40.831931)	
LONGITUDE = 103°46'33.39" (103.775942)	
<b>NAD 27 (TARGET BOTTOM HOLE)</b>	
LATITUDE = 40°49'55.01" (40.831947)	
LONGITUDE = 103°46'31.58" (103.775439)	

SCALE 1" = 1000'	DATE SURVEYED: 11-25-13	DATE DRAWN: 12-17-13
PARTY DALLAS NIELSEN G.W. S.F.	REFERENCES G.L.O. PLAT	
WEATHER COLD	FILE WHITING OIL & GAS CORP.	