



FILE NO: US091647	COMPANY WPX ENERGY ROCKY MTN LLC
API NO: 05045223390000	WELL FEDERAL PA 444-27
	FIELD PARACHUTE
	COUNTY GARFIELD
	STATE CO
Ver. 3.87 S27 T6S R95W PAD: DOE 2-W-27 NABORS 576	LOCATION: SHL: 2405' FNL: 649' FEL BHL: 1128' FSL: 1168' FEL SEC 27 TWP 6S RGE 95W
PERMANENT DATUM LOG MEASURED FROM DRILL. MEAS. FROM	OTHER SERVICES BOND LOG ELEVATIONS: KB 5882 FT DF GL 5856 FT
GL KB KB	ELEVATION 5856 FT 26 FT ABOVE P.D.

DATE		07-Jan-2015		
RUN	TRIP	1	1	
SERVICE ORDER		US091647		
DEPTH DRILLER		8571 FT		
DEPTH LOGGER		8474 FT		
BOTTOM LOGGED INTERVAL		8464 FT		
TOP LOGGED INTERVAL		4749 FT		
TIME STARTED		11:30		
TIME FINISHED		21:30		
OPERATOR RIG TIME		9.5		
TYPE OF FLUID IN HOLE		WATER		
FLUID DENSITY		NA		
FLUID SALINITY		NA		
FLUID LEVEL		80 FT		
LOGGED CEMENT TOP		NA		
WELLHEAD PRESSURE		0 PSI		
MAXIMUM HOLE DEVIATION		NA		
NOMINAL LOGGING SPEED		15 F/MN		
MAX. RECORDED TEMP.		240 DEGF		
REFERENCE LOG		NA		
REFERENCE LOG DATE		NA		
EQUIP. NO.	LOCATION	6670	GRAND JCT	
RECORDED BY		D SMITH		
WITNESSED BY		J DUCY		

IN MAKING INTERPRETATIONS OF LOGS OUR EMPLOYEES WILL GIVE THE CUSTOMER THE BENEFIT OF THEIR BEST JUDGEMENT. BUT SINCE ALL INTERPRETATIONS ARE OPINIONS BASED ON INFERENCES FROM ELECTRICAL OR OTHER MEASUREMENTS, WE CANNOT, AND WE DO NOT GUARANTEE THE ACCURACY OR CORRECTNESS OF ANY INTERPRETATION. WE SHALL NOT BE LIABLE OR RESPONSIBLE FOR ANY LOSS, COST, DAMAGES, OR EXPENSES WHATSOEVER INCURRED OR SUSTAINED BY THE CUSTOMER RESULTING FROM ANY INTERPRETATION MADE BY ANY OF OUR EMPLOYEES.

BOREHOLE RECORD		
BIT SIZE	FROM	TO
13.5 IN	0 FT	2928 FT
8.75 IN	2928 FT	8571 FT

CASING RECORD				
SIZE	WEIGHT	GRADE	FROM	TO
9.625 IN			0 FT	2928 FT
4.5 IN	11.6 LB/F	P-110	0 FT	8571 FT

### REMARKS

RUN 1 TRIP 1: ALL DATA ON THIS LOG IS SHIFTED AND DEPTH MATCHED USING THE GAMMA RAY CURVE TO THE BAKER HUGHES BOND LOG DATED 07/JAN/2015

THE DEPTH MATCHING PROCESS CREATES POTENTIAL FOR COLLER LENGTHS TO VARY FROM THOSE RECORDED ON OTHER CASED HOLE WIRELINE UNITS WITHOUT A GAMMA RAY REFERENCE

AMOUNT OF LINEAR SHIFT: -4.0 FT

Logged with zero PSI at wellhead.

LOGGED IN PNC-3D MODE

BHT = 239 DEGREES

SJ = 5325' TO 5347'

THANK YOU FOR CHOOSING BAKER HUGHES WIRELINE SERVICES

CREW: BAUGHMAN/HOLLER/SMITH

#### EQUIPMENT DATA

RUN	TRIP	TOOL	SERIES NO.	SERIAL NO.	POSITION
1	1	TEMP	8255XA	11774586	FREE
1	1	RPM	8281FA	10191667	FREE
1	1	RPM	8283PA	10169251	FREE
1	1	RPM	8281EA	10191667	FREE
1	1	GR	8262XA	10317216	FREE
1	1	TEL/CCL	8248EA	10387150	FREE

### MAIN LOG 5"/100FT SCALE

ECLIPS 6.2i ECLIPS General Release Rel 6.2i Wed Jun 12 12:21:40 CDT 2013

Updates: 1 Patches: 4

Plotted: Sat Jan 10 14:00:18 2015

#### PARAMETER AND FILTER SUMMARY REPORT

FILE: /dat1a/CH091647/n353h02.prm  
LOGGING MODE: DEPTH DIRECTION: UP  
TOP DEPTH: 6390.000 ft BOTTOM DEPTH: 8482.000 ft

#### SYMMETRIC FILTER

MEASUREMENT TYPE	PARAMETER	VALUE	UNITS	INTERVAL (ft)	
GR	FILTER ()	medium (1)		TOP	BOTTOM

#### RPM PROCESSING

MEASUREMENT TYPE	PARAMETER	VALUE	UNITS	INTERVAL (ft)	
PNC Parameters	BOREHOLE CONTENTS	FLUID		TOP	BOTTOM
	OPEN/CASED HOLE	CASED HOLE		"	"
	BOREHOLE SIZE	8.75	in	"	"
	CASING SIZE	4.50	in	"	"
	MATRIX	SANDSTONE		"	"
	CORRECTION BUFFER	11		"	"

#### PARAMETER AND FILTER SUMMARY REPORT

FILE: /dat1a/CH091647/n353h04.prm  
LOGGING MODE: DEPTH DIRECTION: UP  
TOP DEPTH: 4489.250 ft BOTTOM DEPTH: 6706.000 ft

#### SYMMETRIC FILTER

MEASUREMENT TYPE	PARAMETER	VALUE	UNITS	INTERVAL (ft)	
GR	FILTER ()	medium (1)		TOP	BOTTOM

#### RPM PROCESSING

MEASUREMENT TYPE	PARAMETER	VALUE	UNITS	INTERVAL (ft)	
PNC Parameters	BOREHOLE CONTENTS	FLUID		TOP	BOTTOM
	OPEN/CASED HOLE	CASED HOLE		"	"
	BOREHOLE SIZE	8.75	in	"	"
	CASING SIZE	4.50	in	"	"

## CURVE DESCRIPTION REPORT

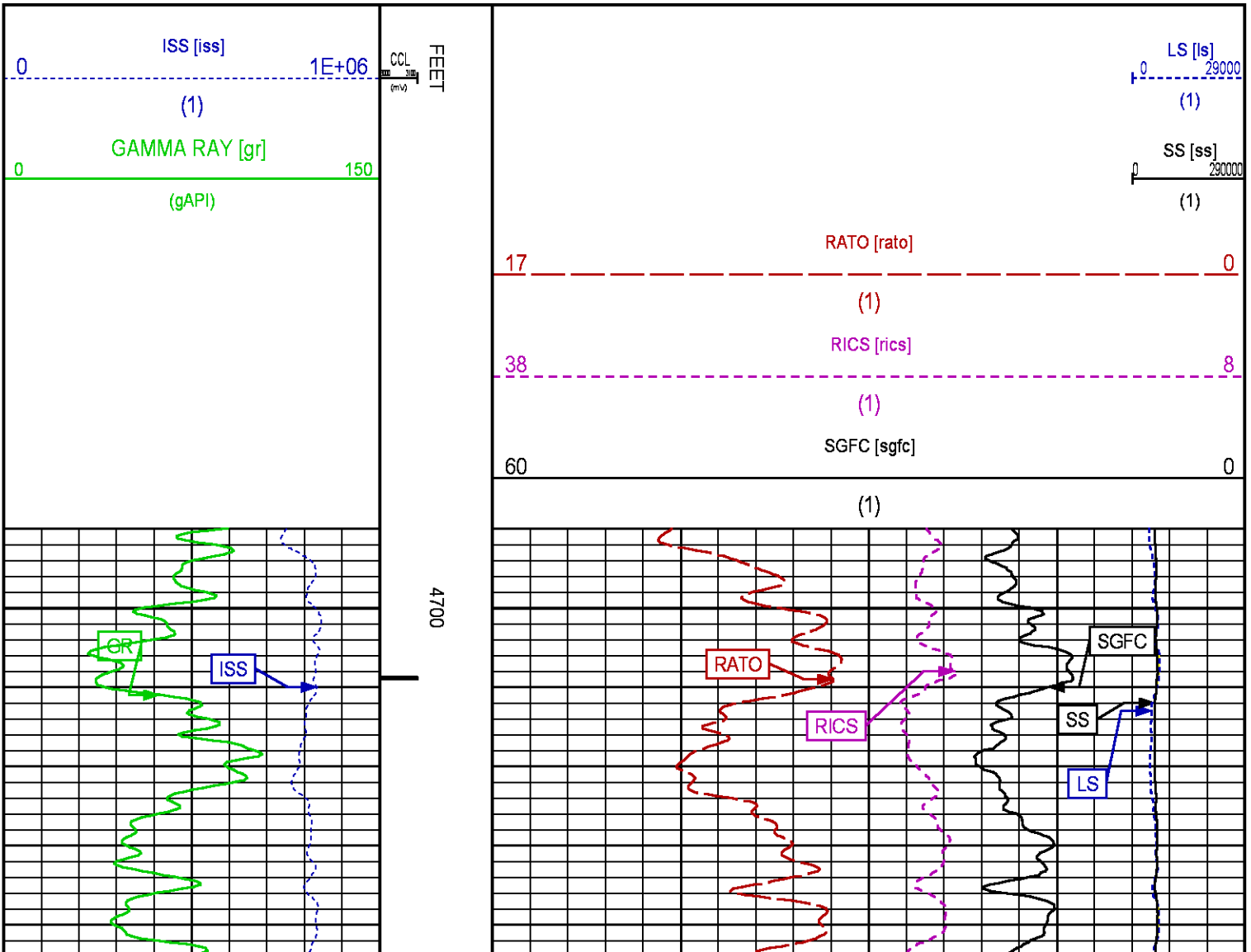
CURVE NAME	CREATION DATE	CURVE DESCRIPTION
F1:CCL	Jan 7 12:53:20 2015	CASING COLLAR LOCATOR
F1:GR	Jan 7 12:53:20 2015	GAMMA RAY
F1:ISS	Jan 7 12:53:20 2015	INELASTIC SHORT SPACE COUNT RATE
F1:LS	Jan 7 12:53:20 2015	LONG SPACE COUNT RATE
F1:RATO	Jan 7 12:53:20 2015	SHORT/LONG SPACE COUNT RATE RATIO
F1:RICS	Jan 7 12:53:20 2015	SHORT SPACE INELASTIC TO CAPTURE COUNT RATE RATIO (ISS/CSS)
F1:SGFC	Jan 7 12:53:20 2015	CORRECTED FORMATION SIGMA
F1:SS	Jan 7 12:53:20 2015	SHORT SPACE COUNT RATE

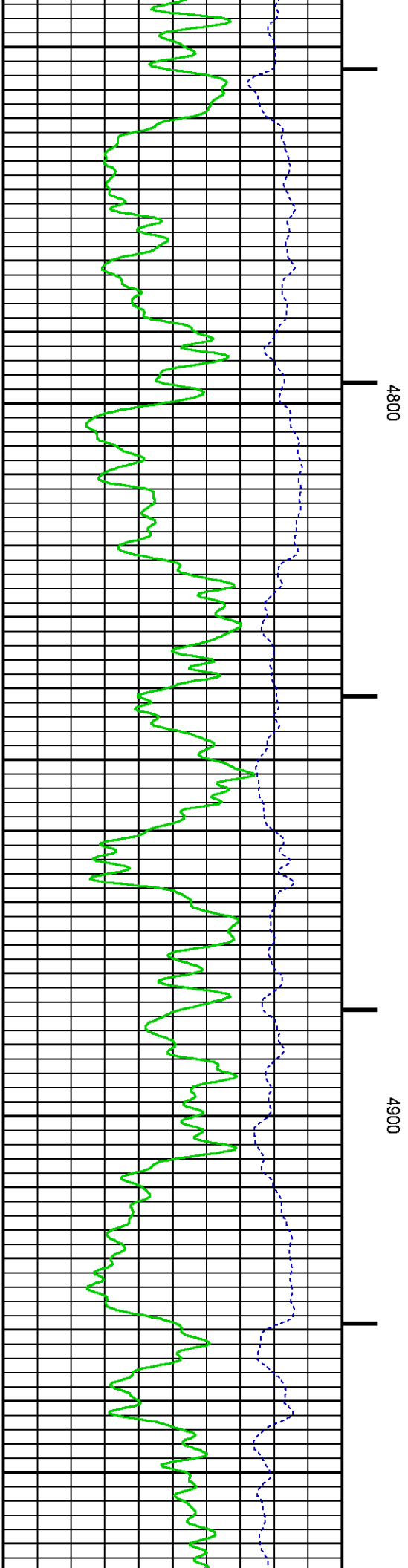
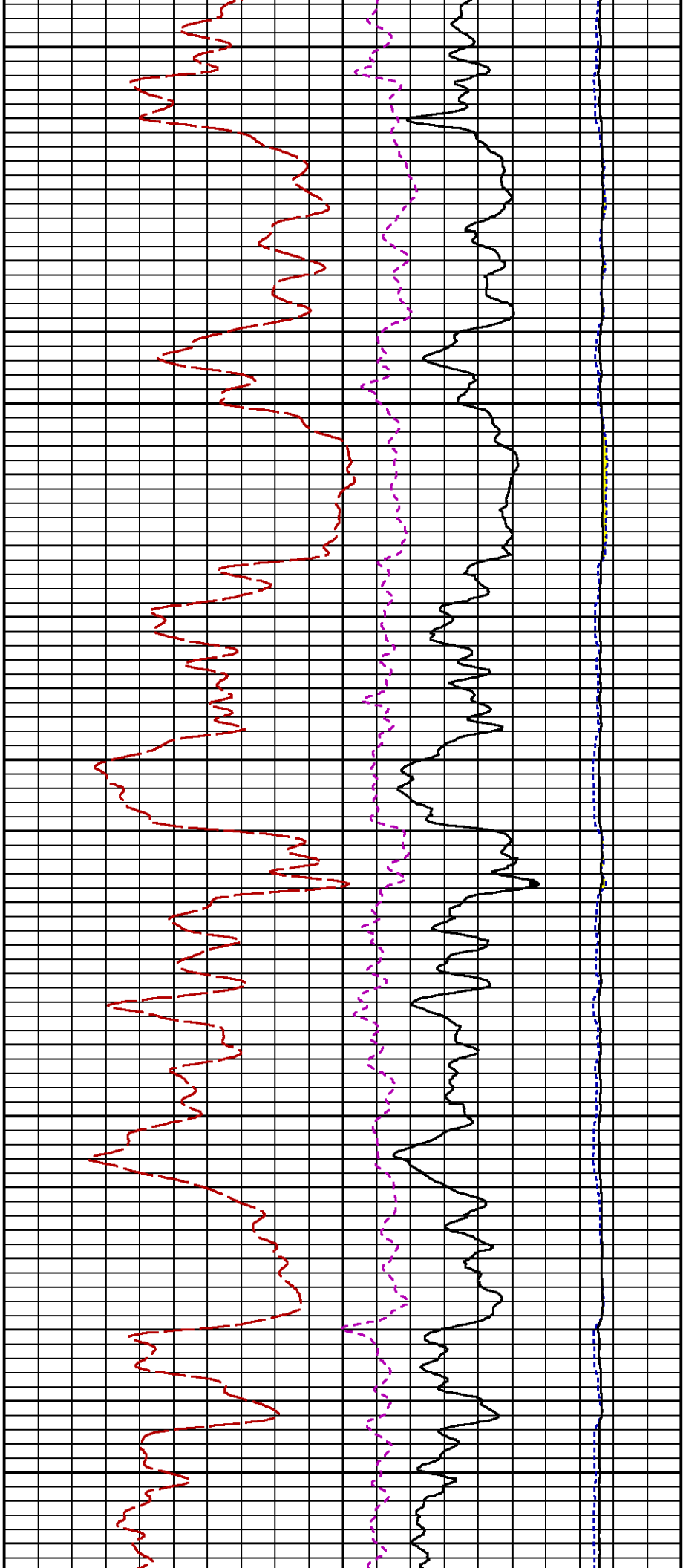
## CURVE MEASURE POINT OFFSET

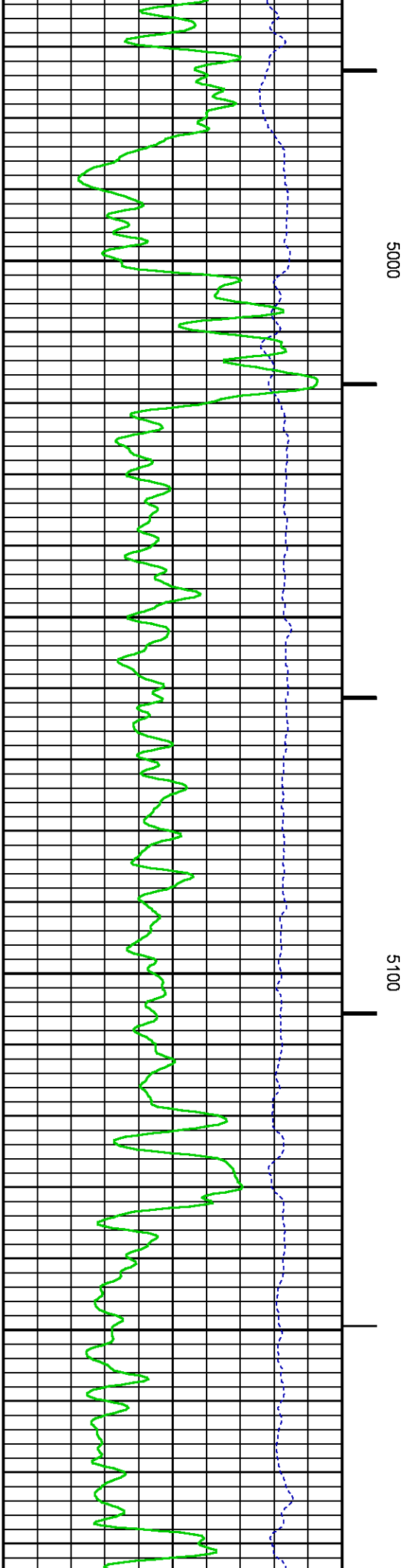
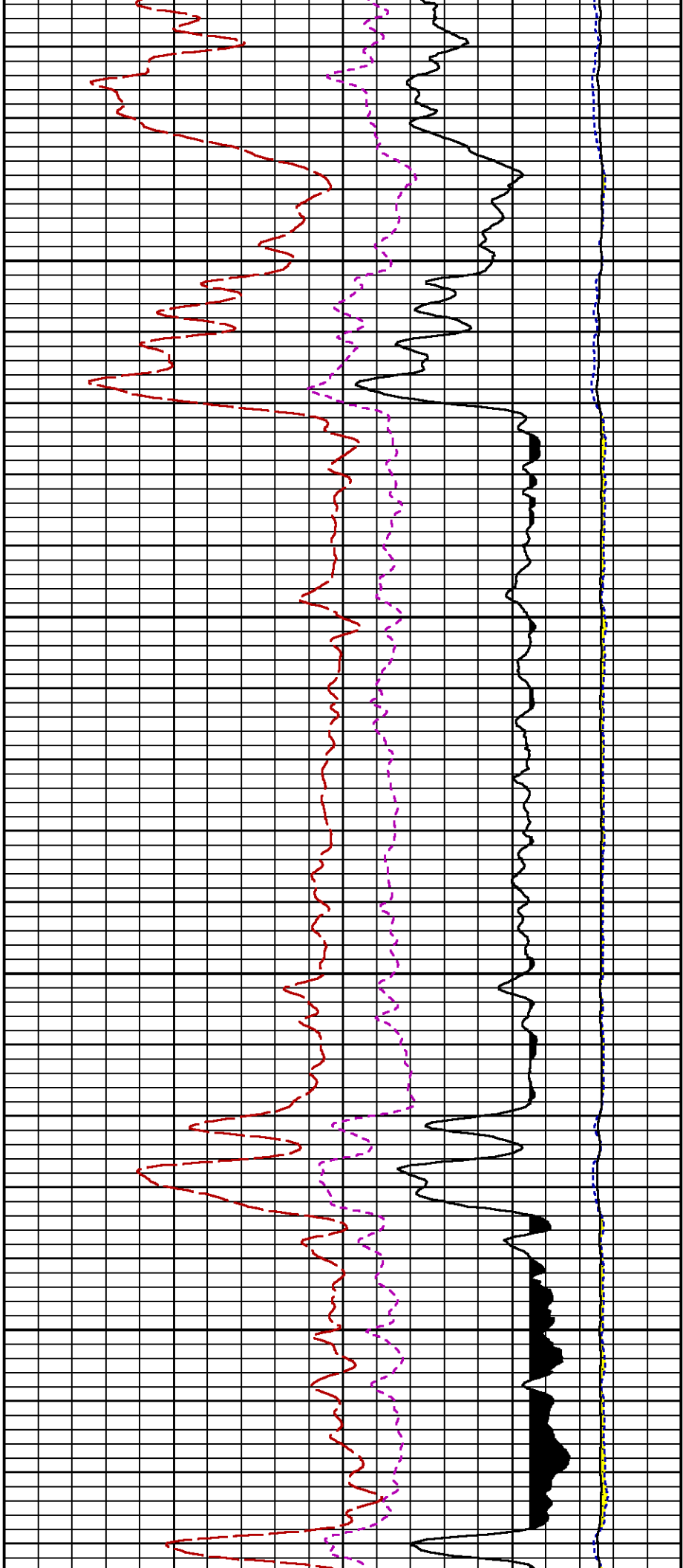
CURVE	OFFSET (ft)	CURVE	OFFSET (ft)	CURVE	OFFSET (ft)	CURVE	OFFSET (ft)
CCL	26.00	ISS	12.75	RATO	12.75	SGFC	12.75
GR	23.00	LS	12.75	RICS	12.75	SS	12.75

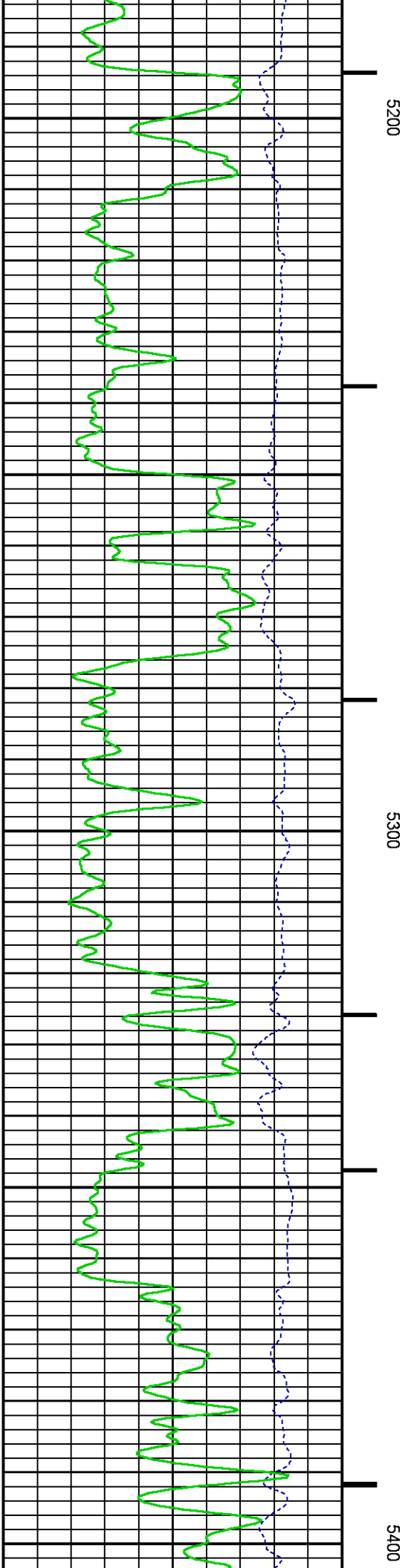
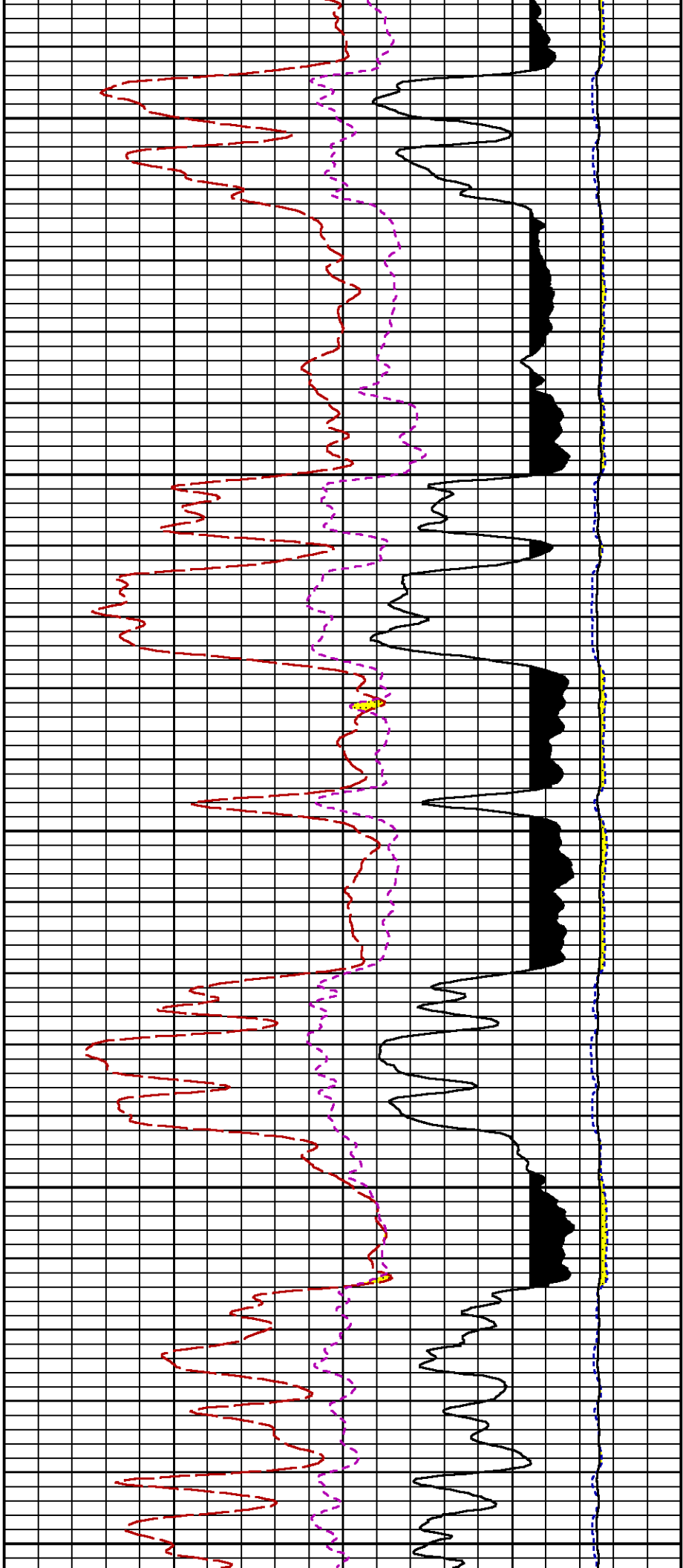
Presentation : HL6670:RPM\_MAIN.fvpdf [5"/100' Scale]  
Plot Interval : 4690 - 8487 Feet

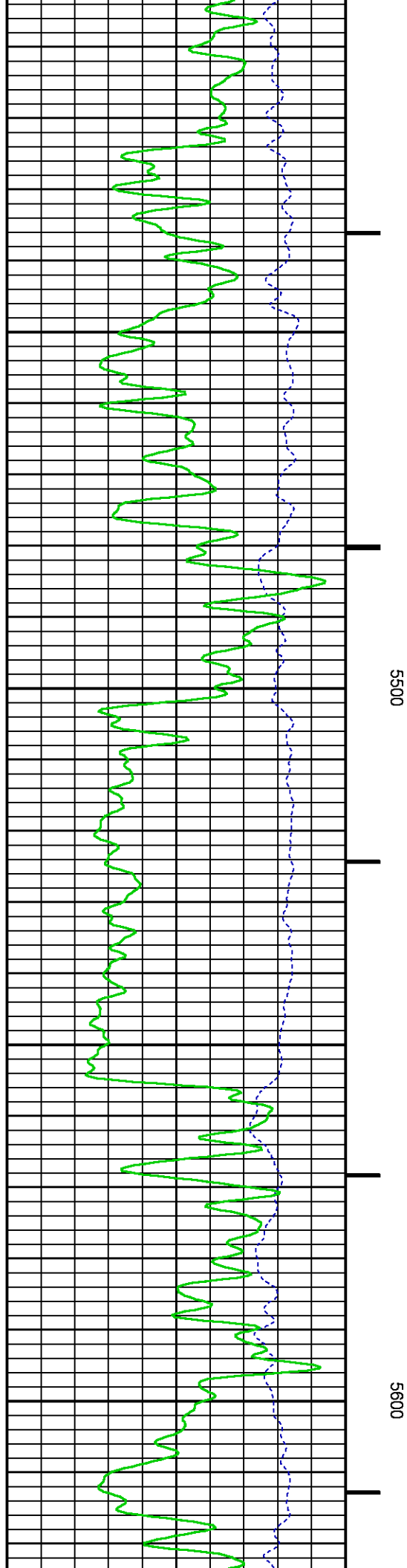
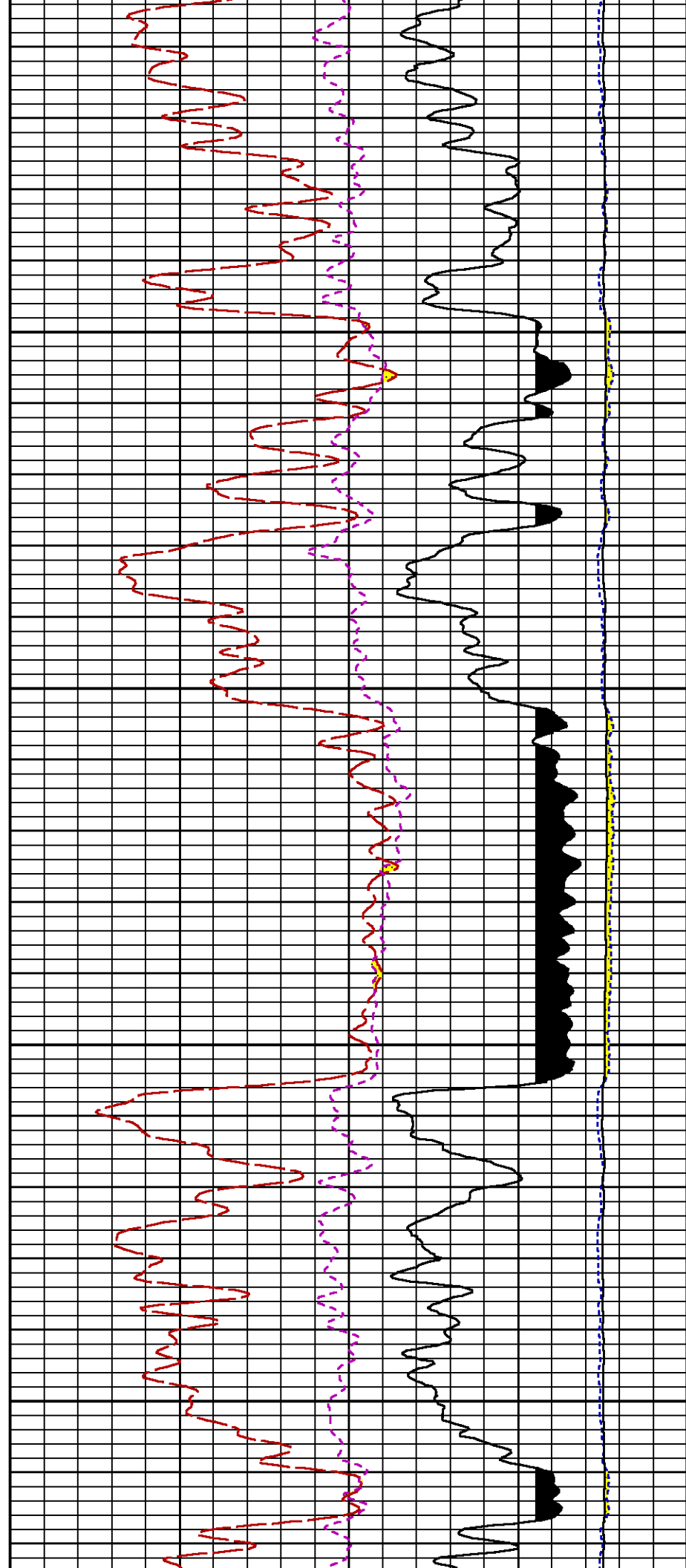
Data File 1 : F1 : HL6670:/dat1a/CH091647/n353hs2.xtf  
Created On : Jan 7 12:53:20 2015  
Company : WPX ENERGY ROCKY MTN LLC  
Well : FEDERAL PA 444-27  
Field : PARACHUTE  
File Interval : 17.5 - 8487 Feet  
OCT : n353h

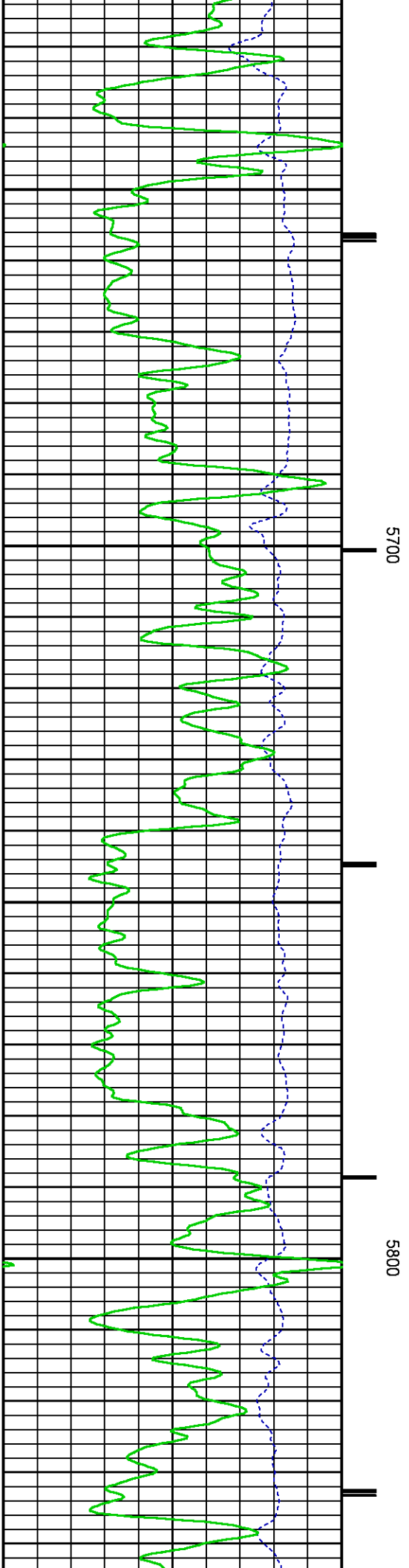
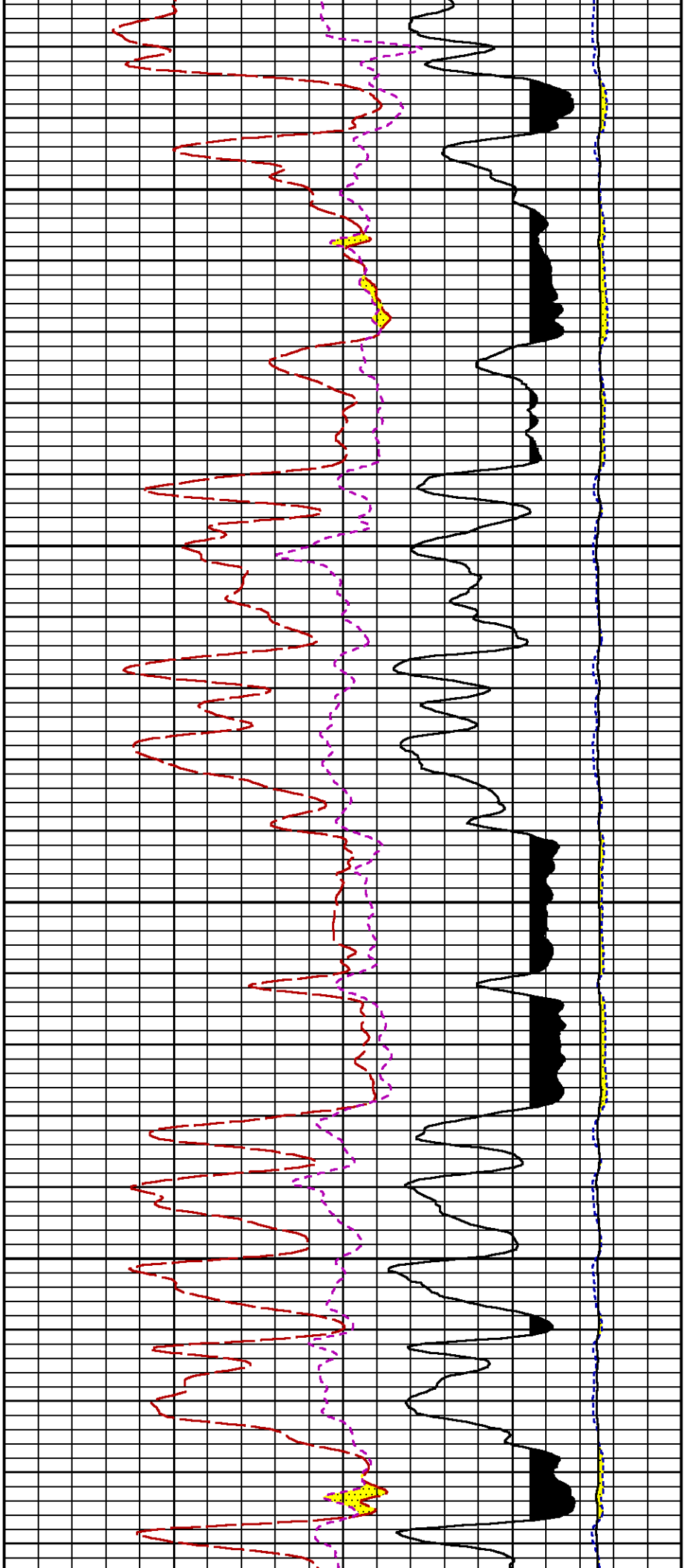




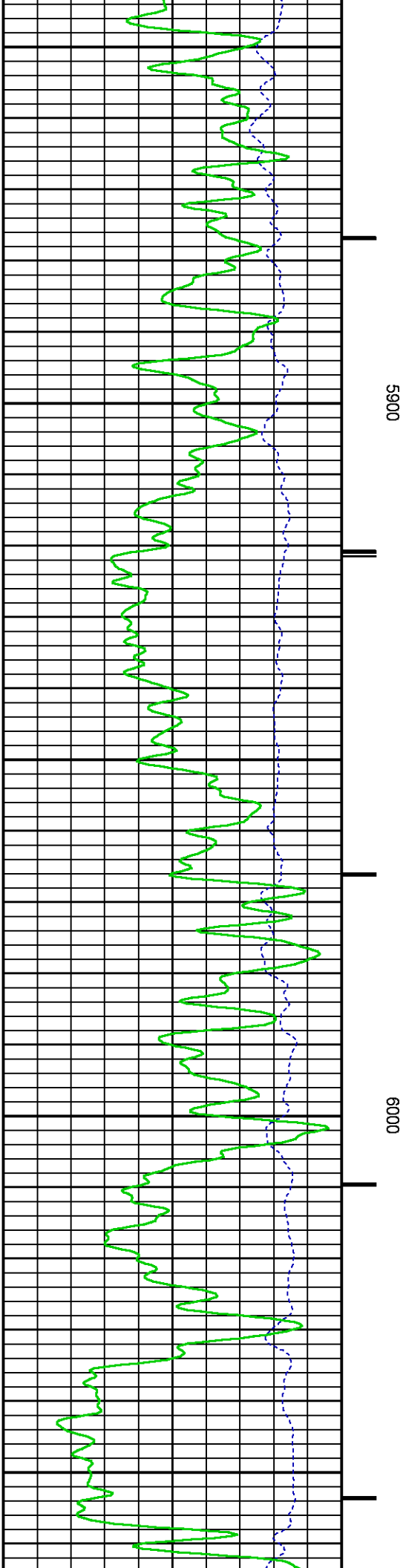
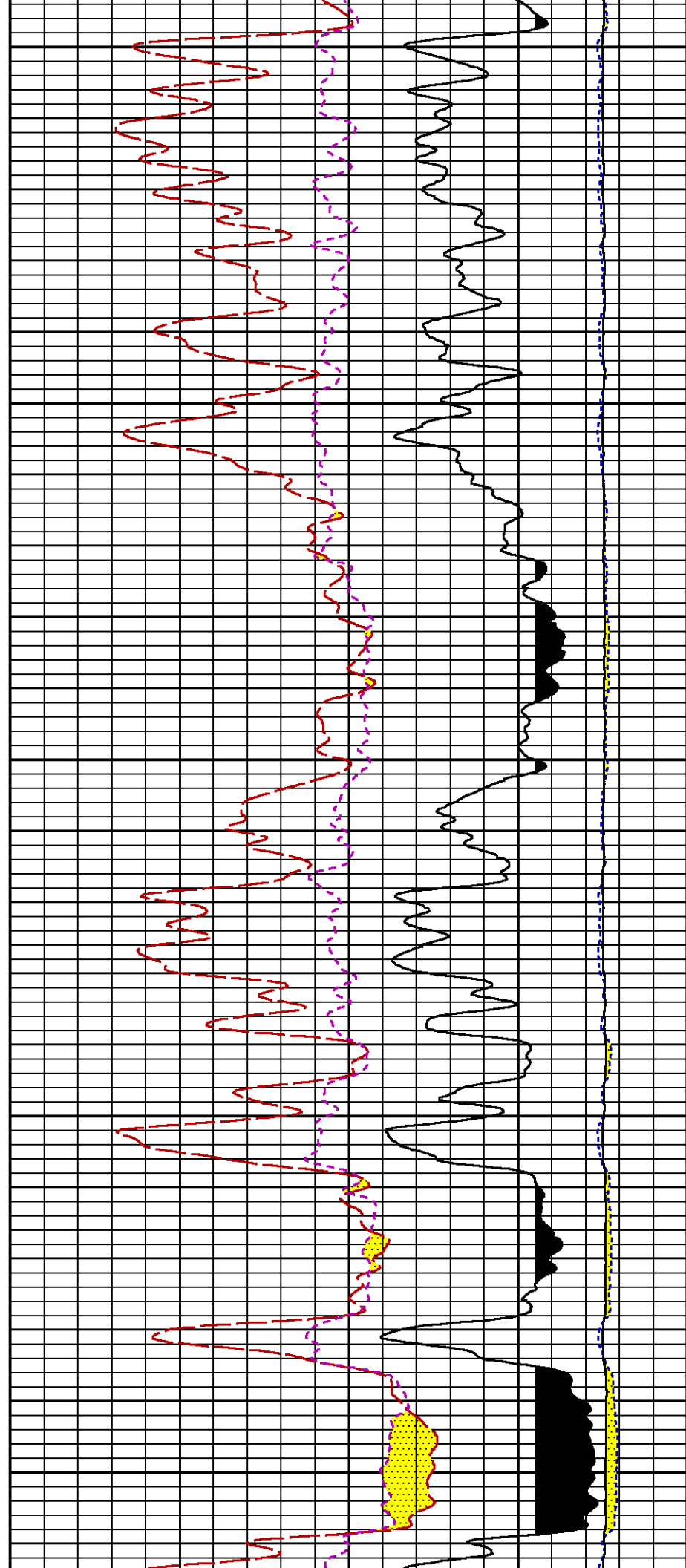


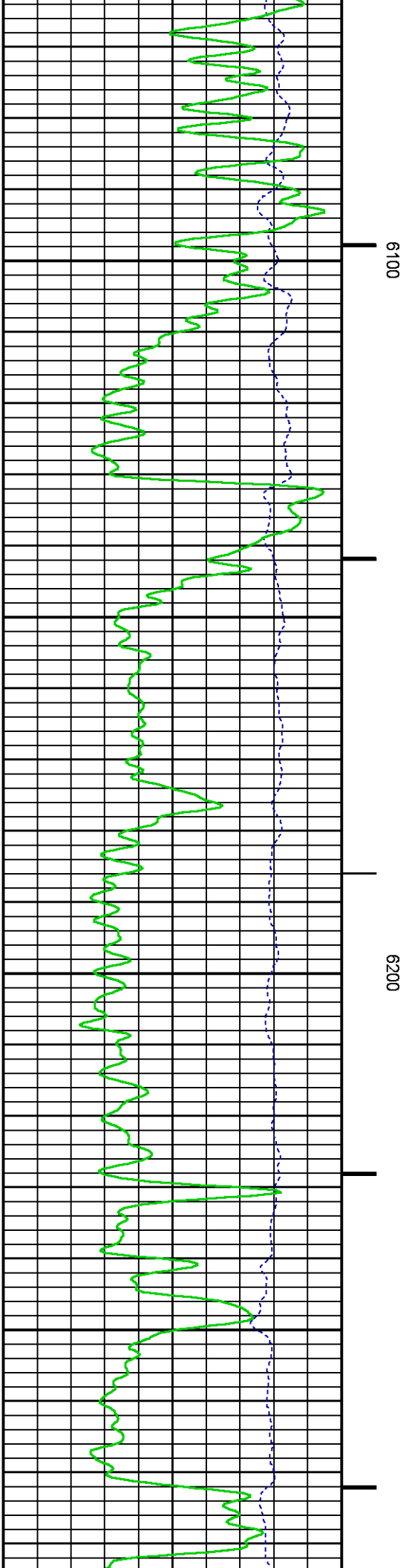
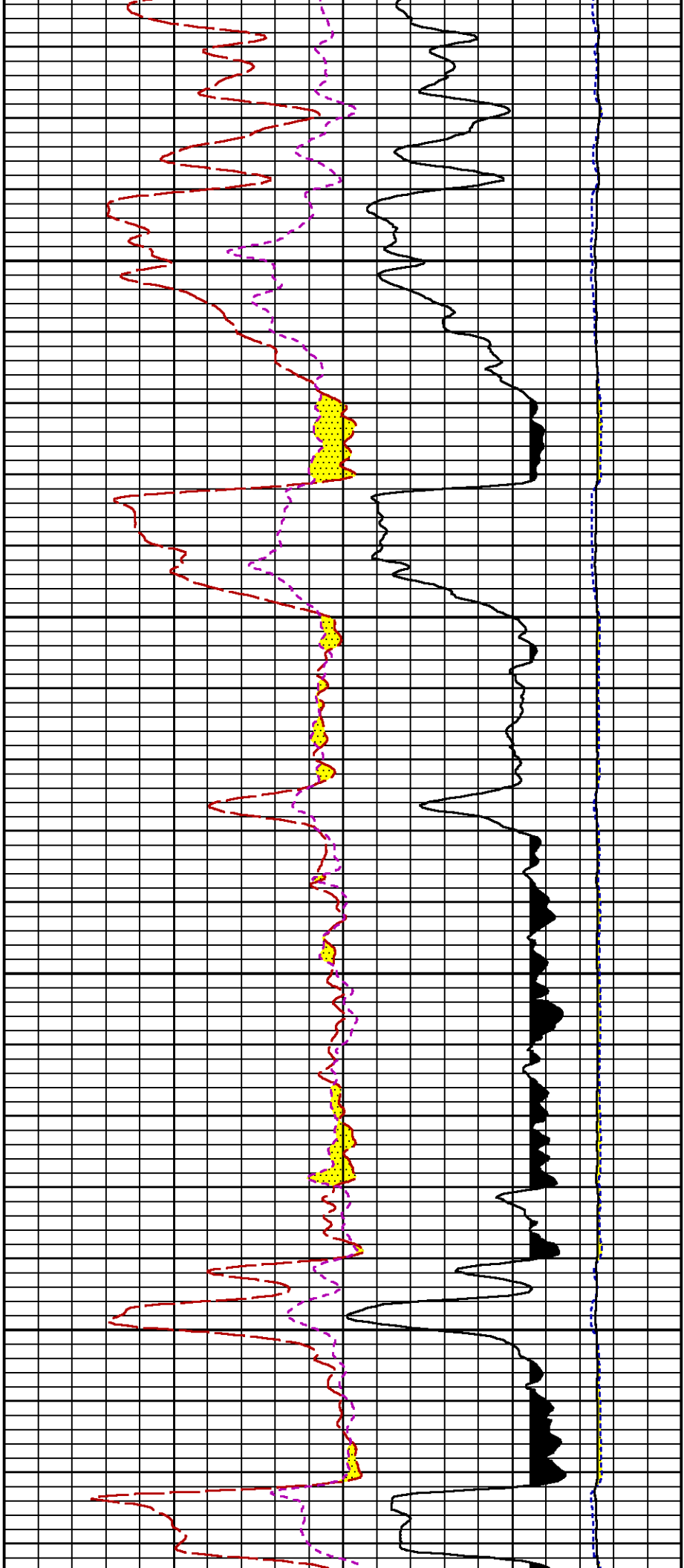


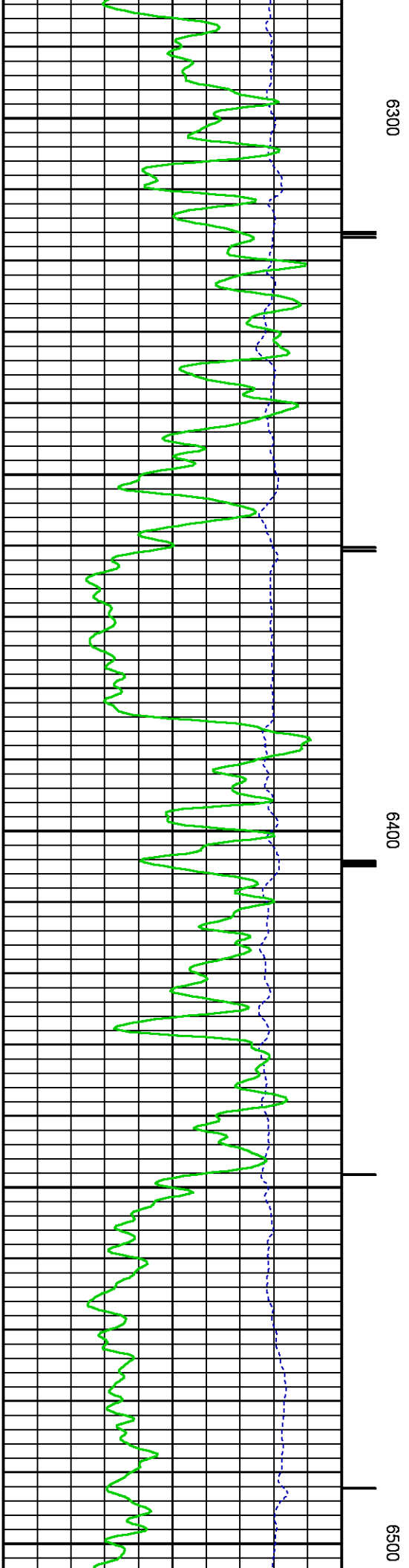
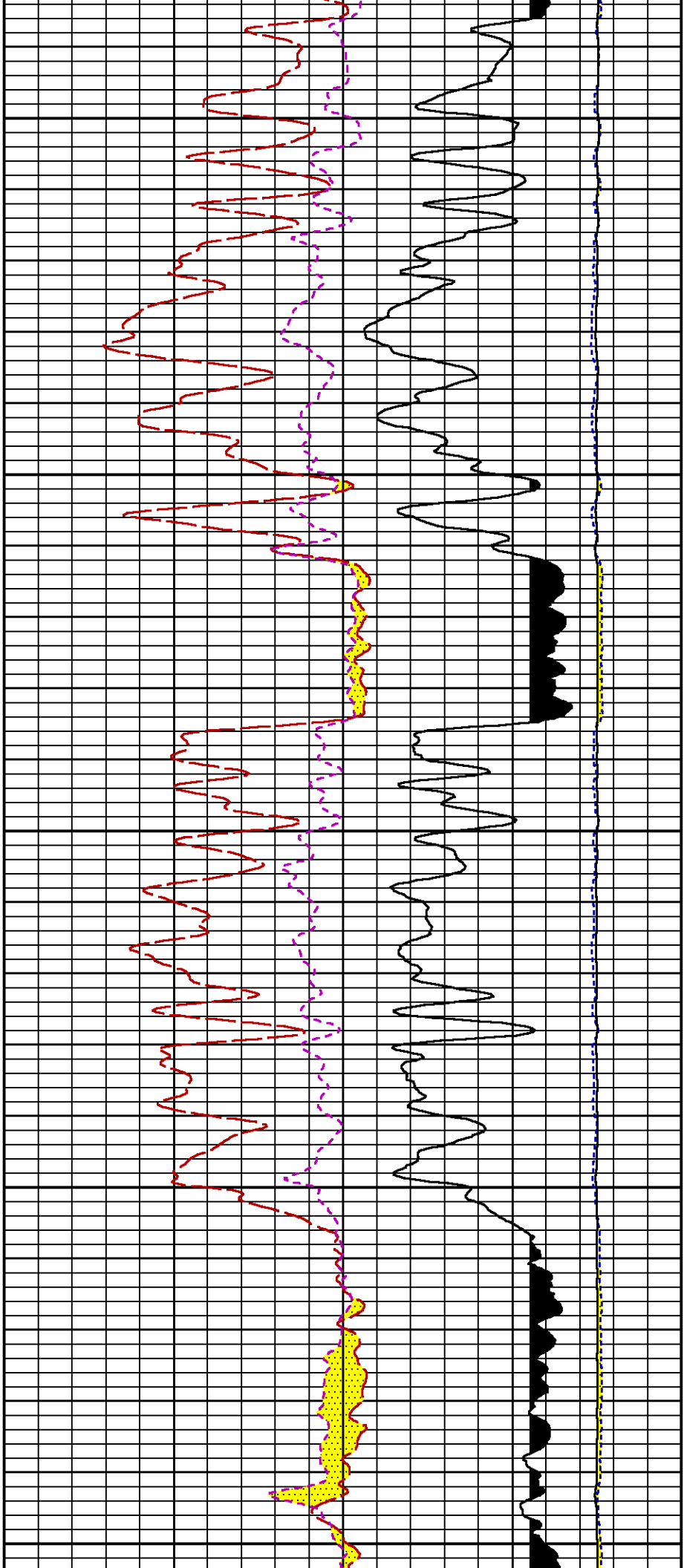


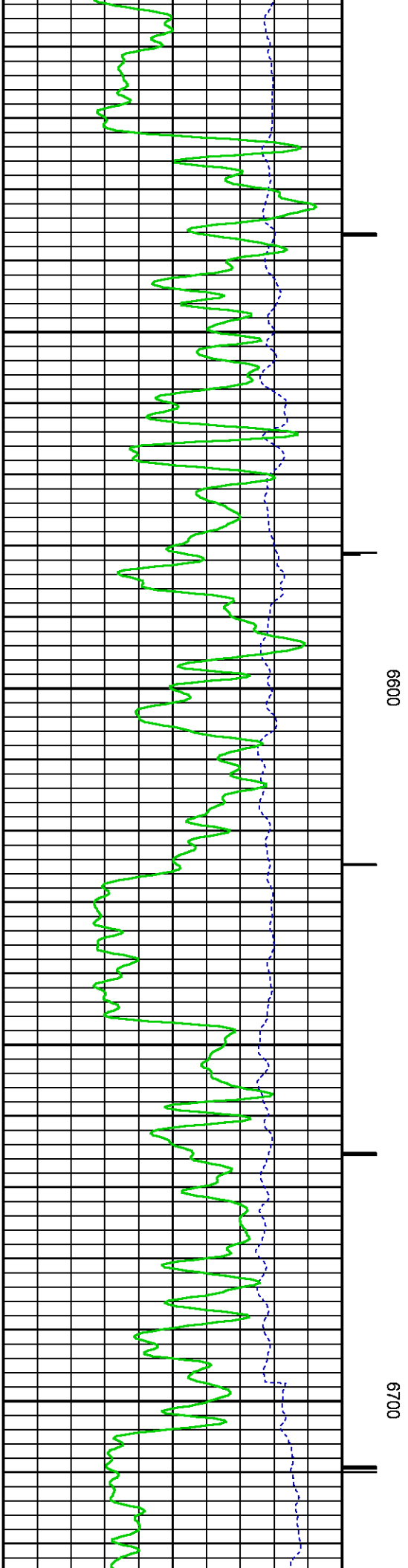
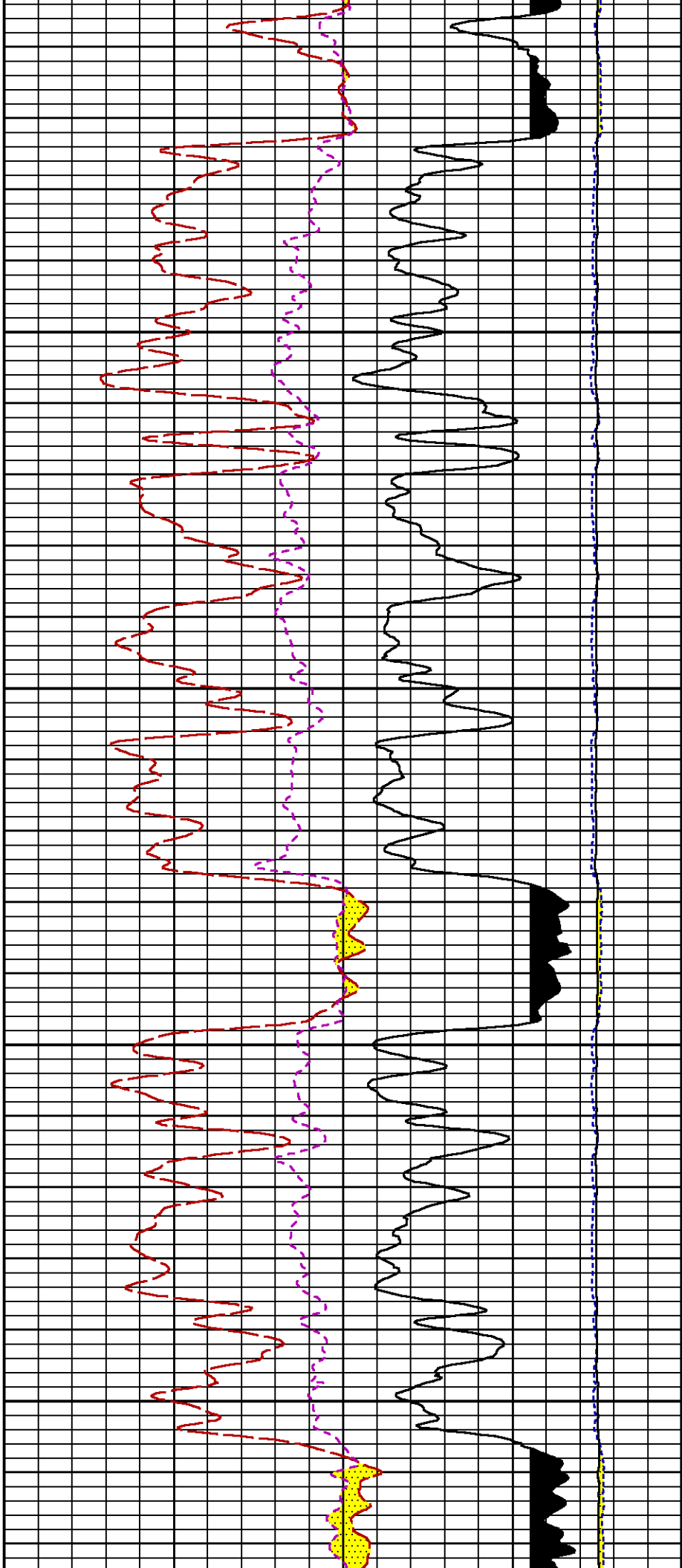


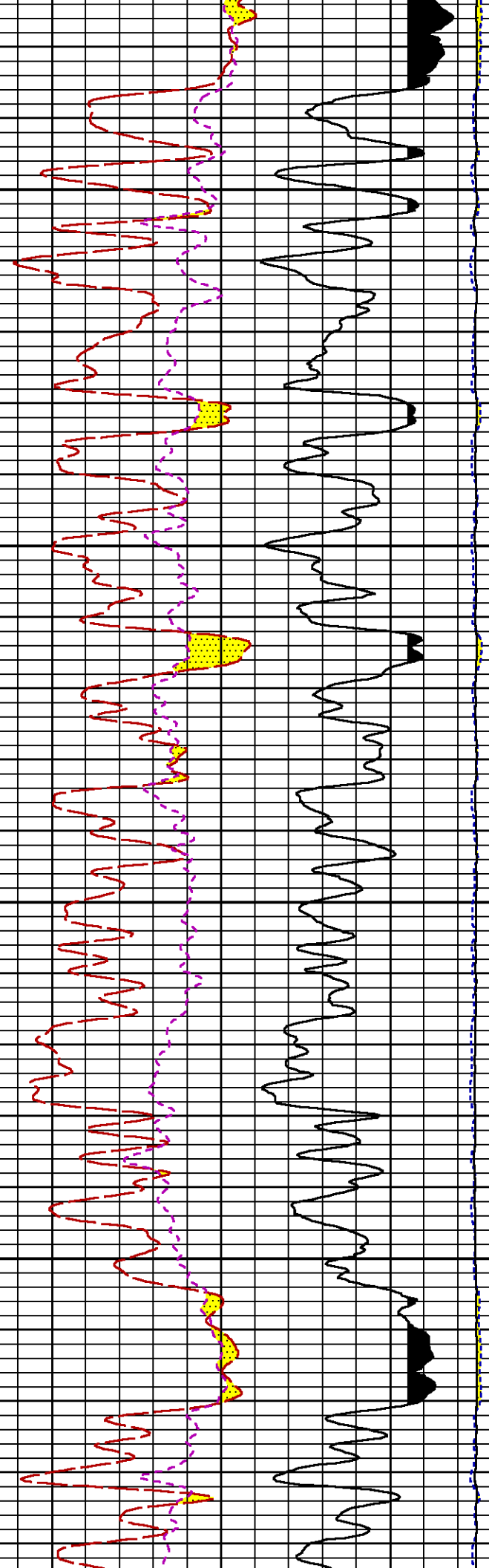
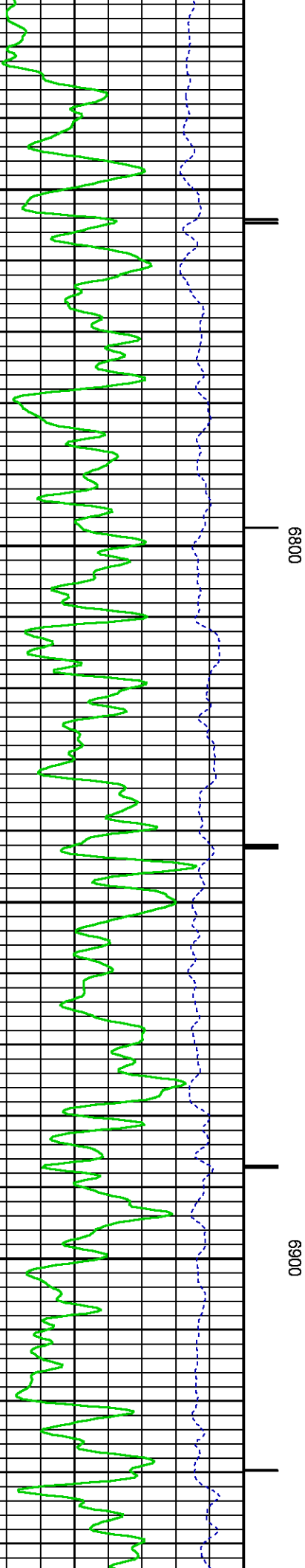


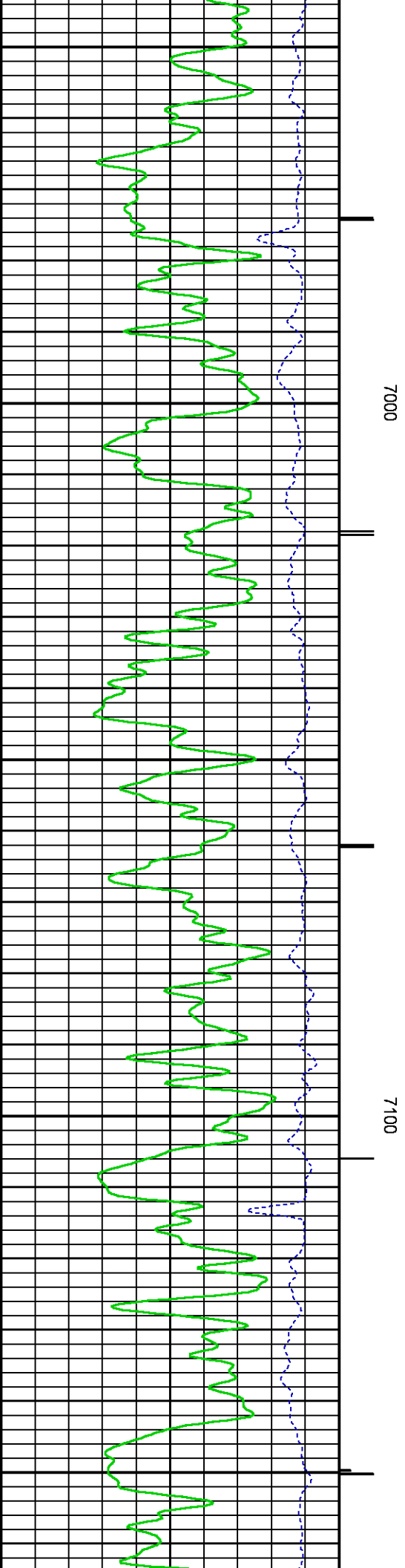
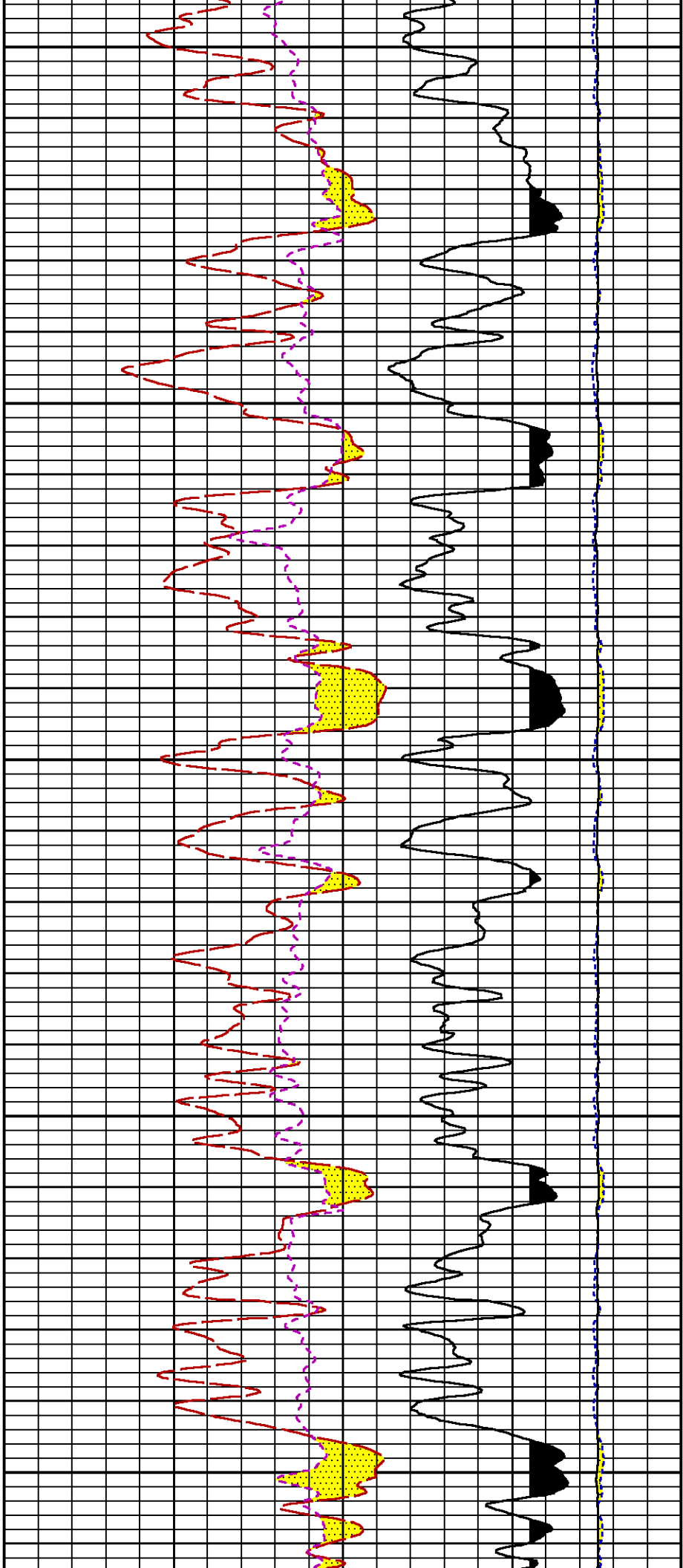


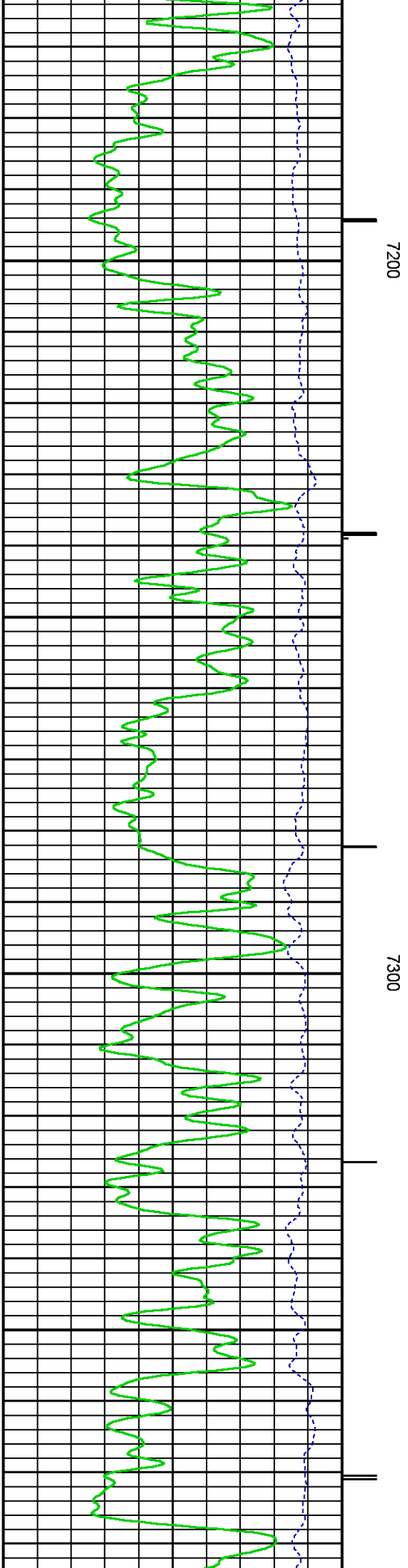
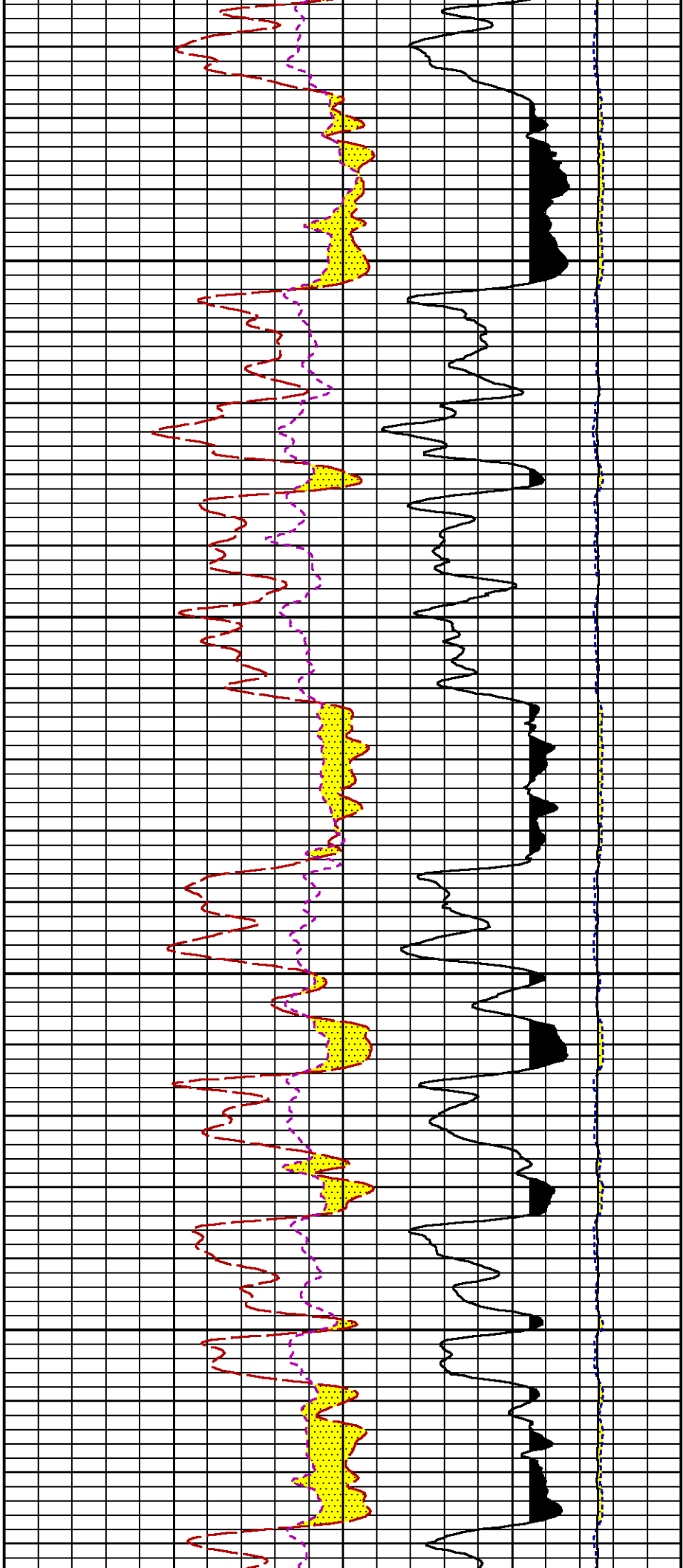


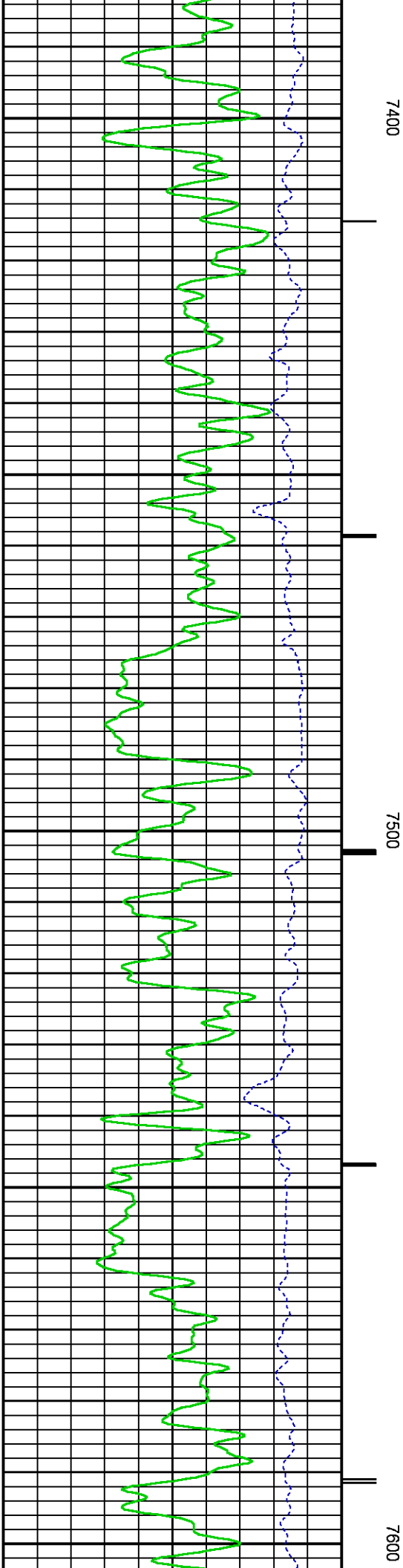
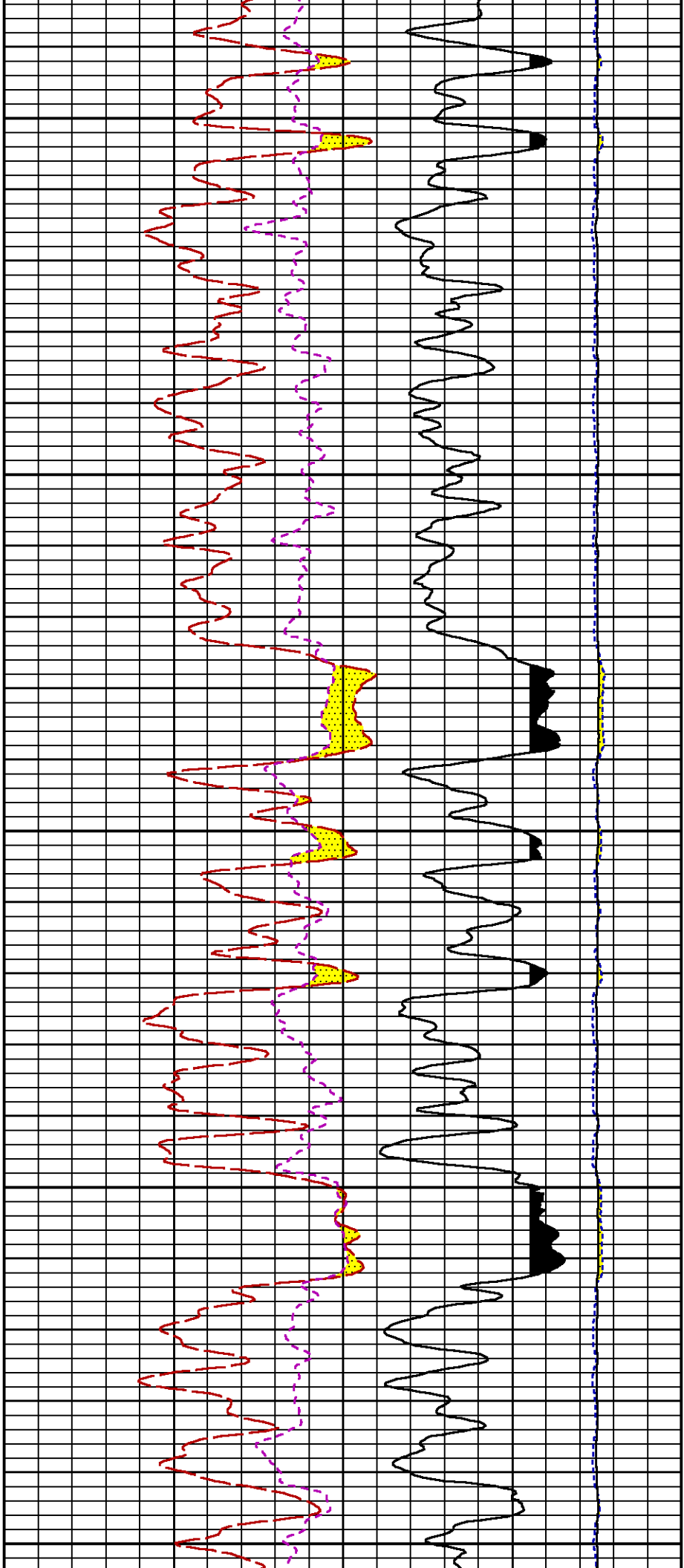




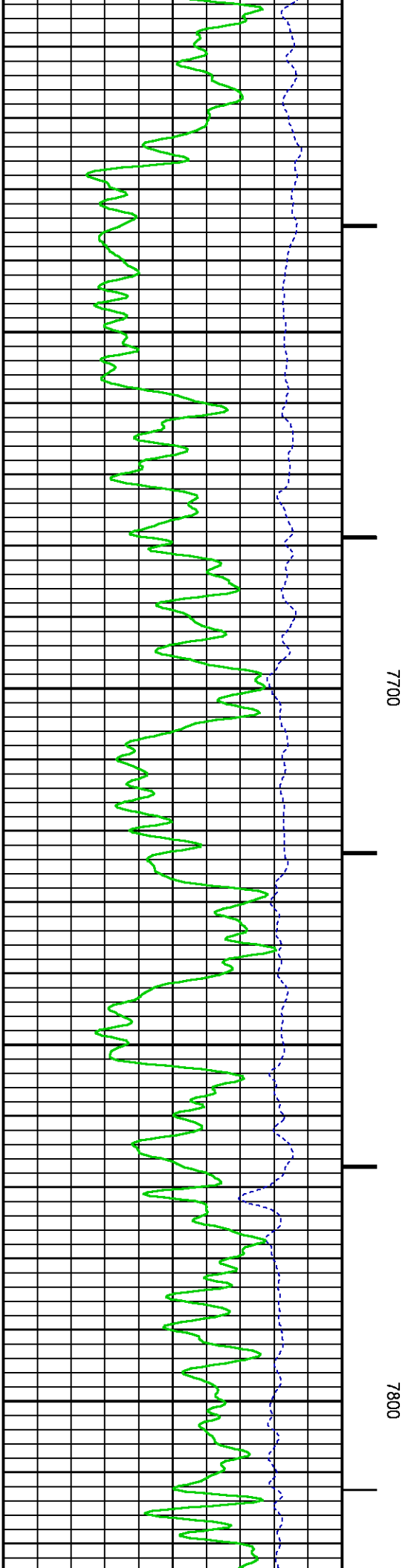
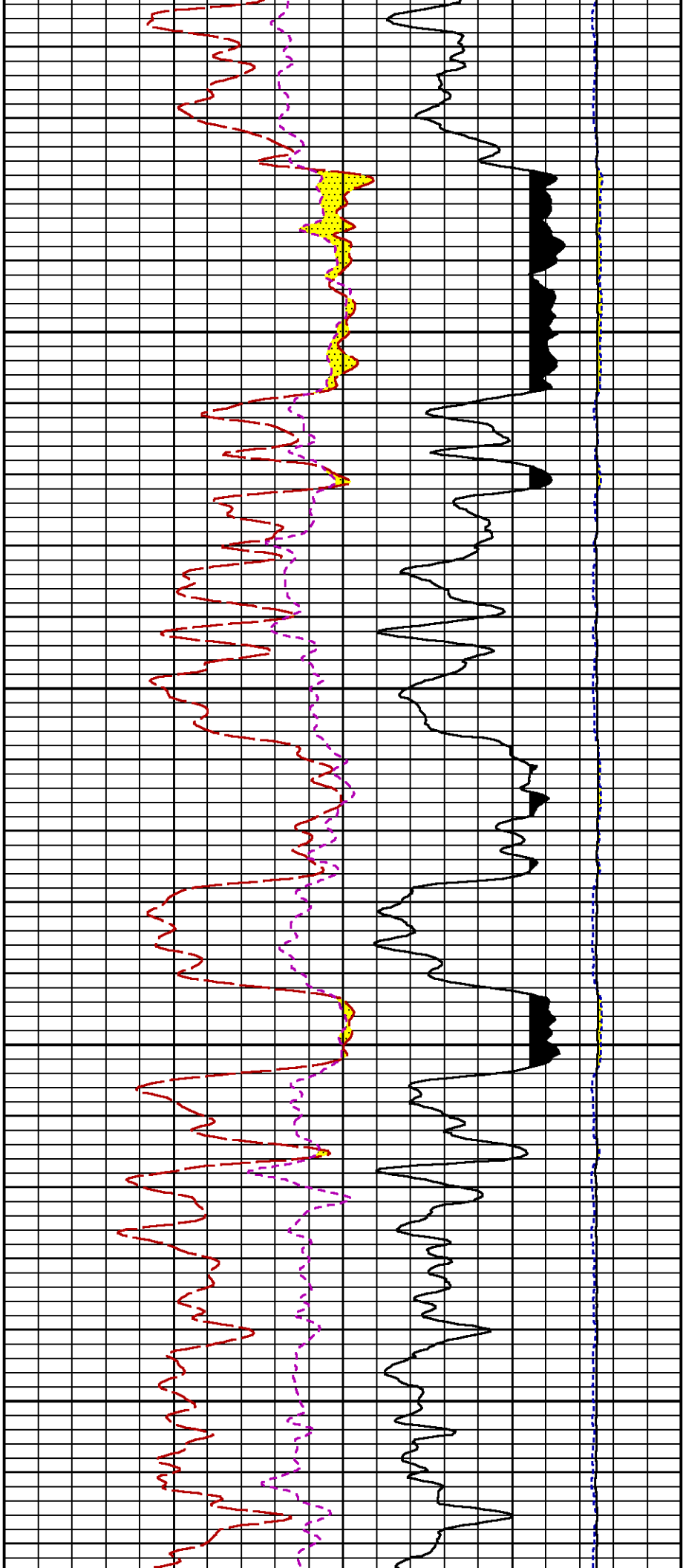


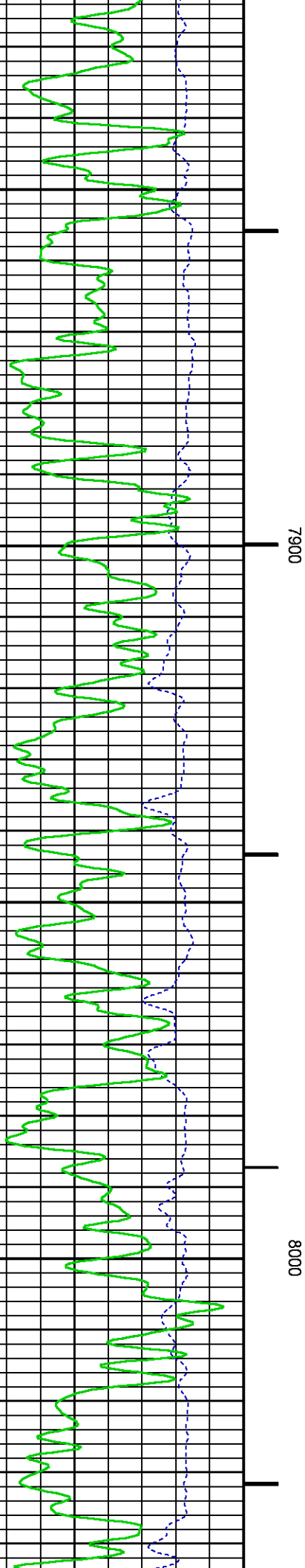
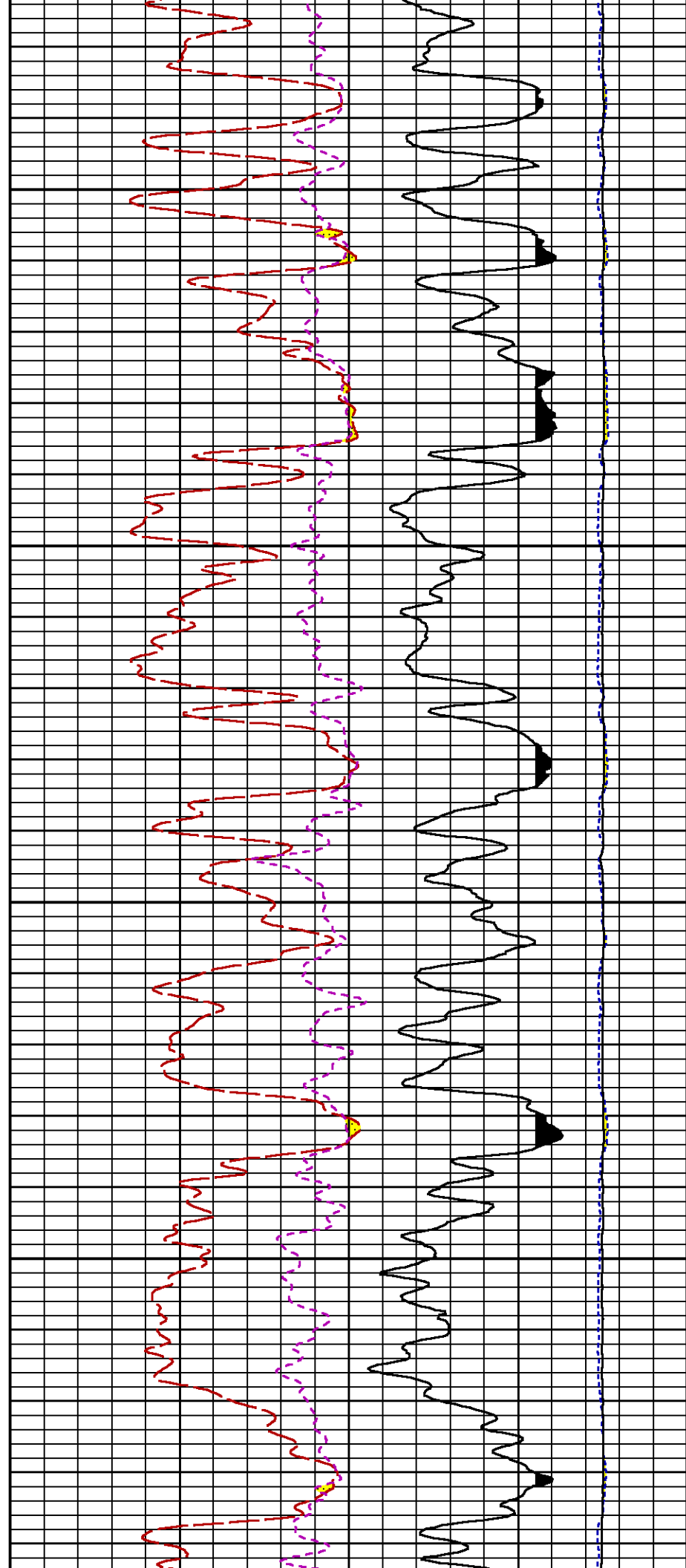


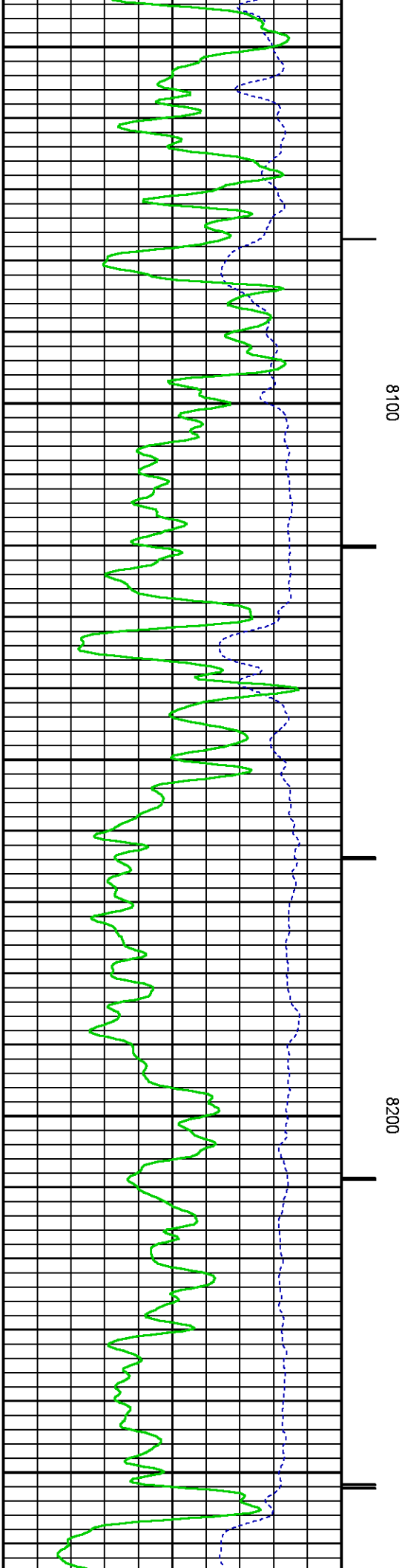
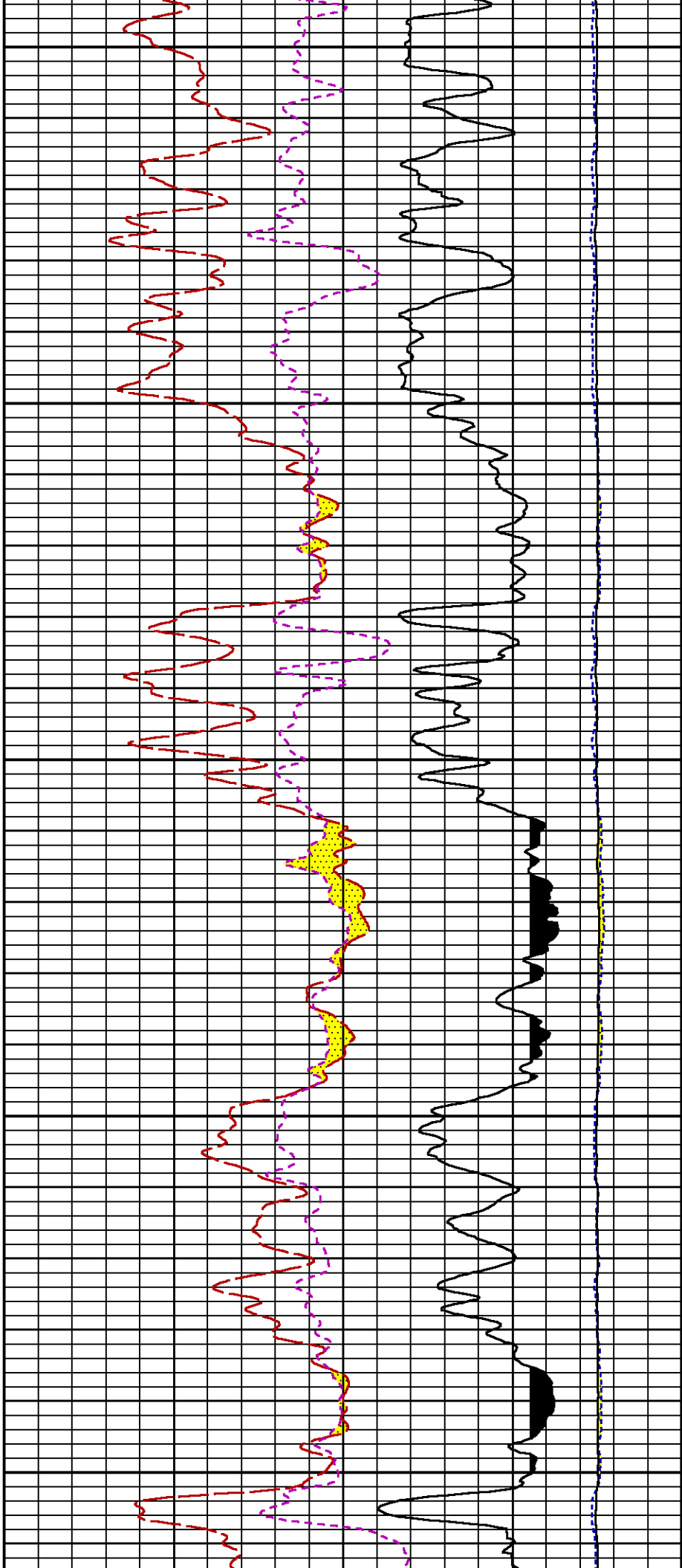












8300

8400

TD

GR

ISS

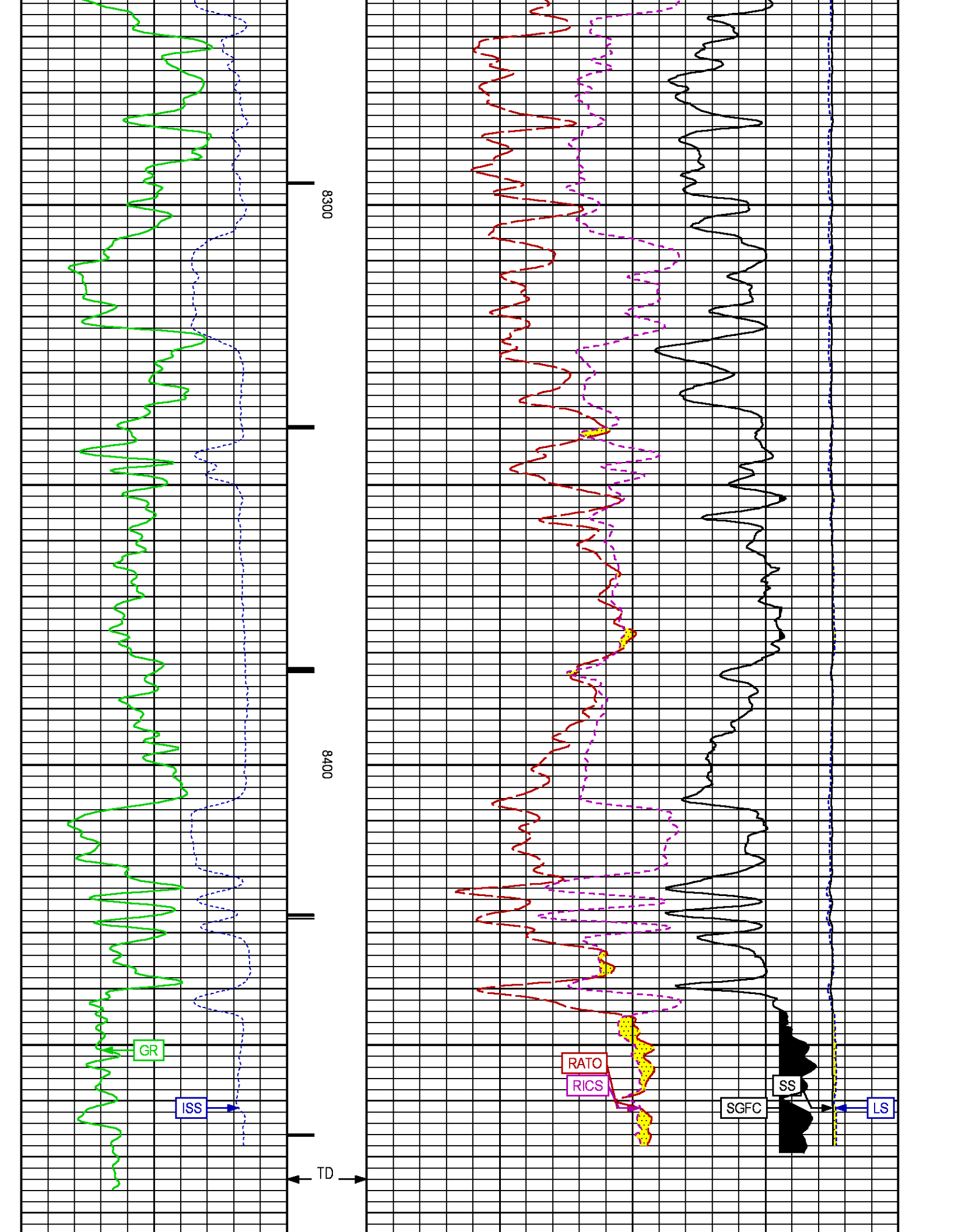
RATO

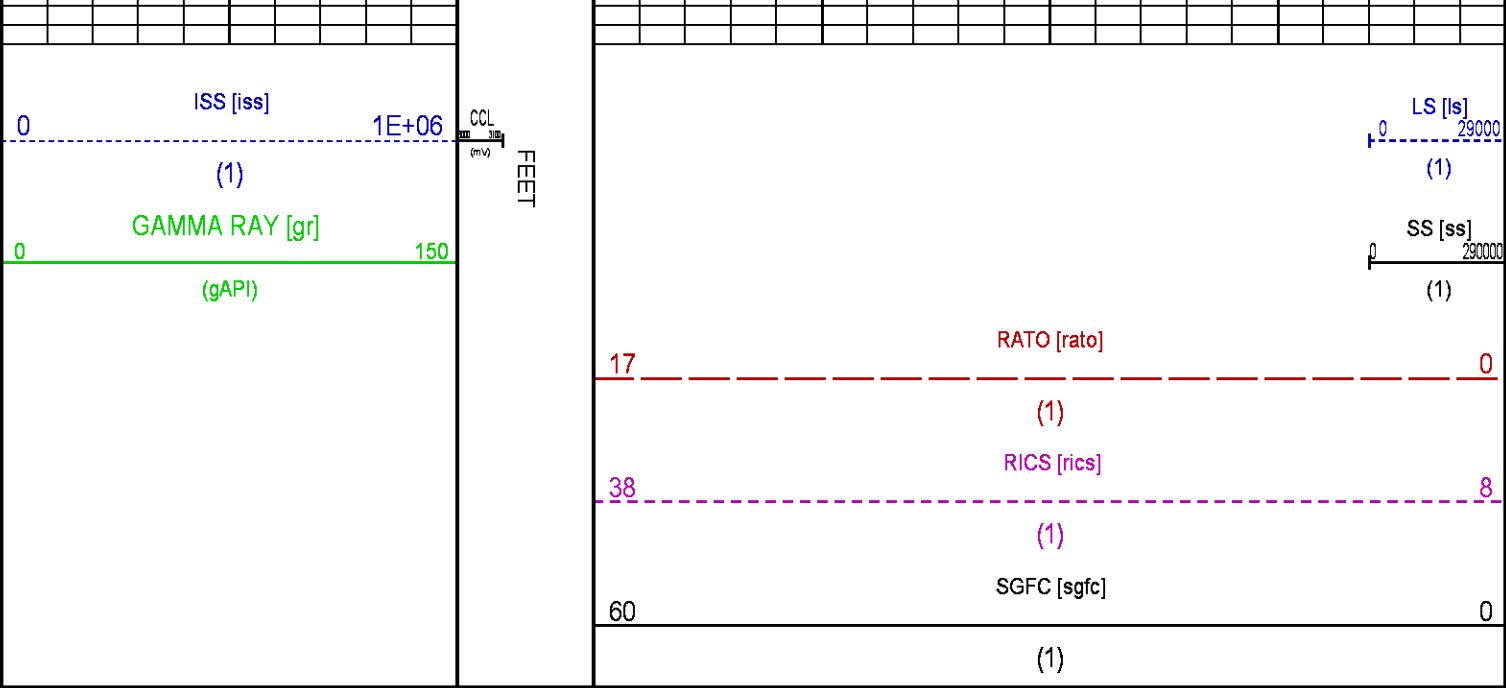
RICS

SGFC

SS

LS





REPEAT SECTION PNC-3D MODE

ECLIPS 6.2i ECLIPS General Release Rel 6.2i Wed Jun 12 12:21:40 CDT 2013  
Updates: 1 Patches: 4

Plotted: Thu Jan 8 11:01:00 2015

PARAMETER AND FILTER SUMMARY REPORT

FILE: /dat1a/CH091647/n353h01.prm  
LOGGING MODE: DEPTH DIRECTION: UP  
TOP DEPTH: 7576.500 ft BOTTOM DEPTH: 7965.750 ft

SYMMETRIC FILTER

MEASUREMENT TYPE	PARAMETER	VALUE	UNITS	INTERVAL (ft)
GR	FILTER ()	medium (1)		TOP BOTTOM

RPM PROCESSING

MEASUREMENT TYPE	PARAMETER	VALUE	UNITS	INTERVAL (ft)
PNC Parameters	BOREHOLE CONTENTS	FLUID		TOP BOTTOM
	OPEN/CASED HOLE	CASED HOLE		" "
	BOREHOLE SIZE	8.75	in	" "
	CASING SIZE	4.50	in	" "
	MATRIX	SANDSTONE		" "
	CORRECTION BUFFER	11		" "

CURVE DESCRIPTION REPORT

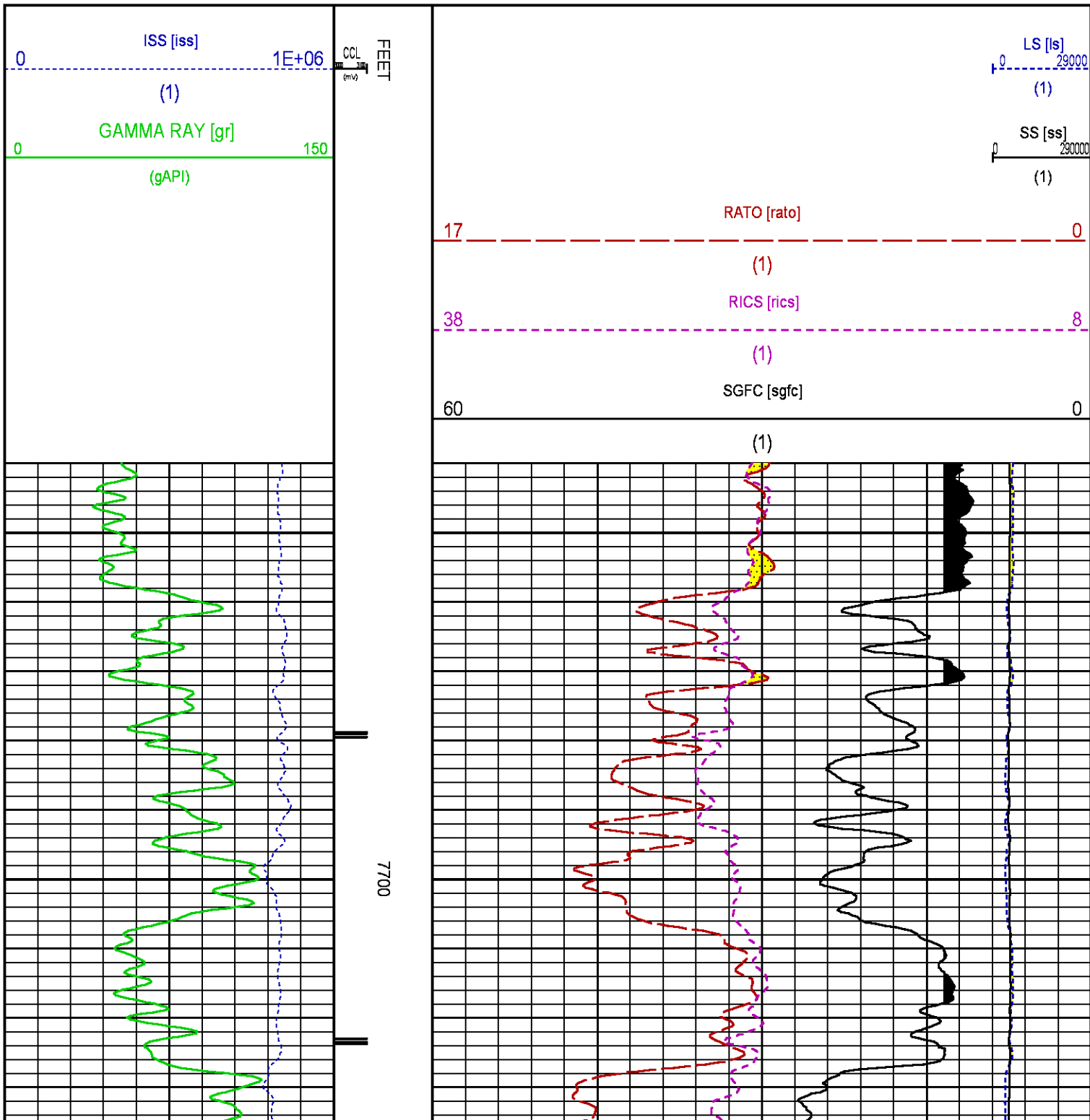
CURVE NAME	CREATION DATE	CURVE DESCRIPTION
F1:CCL	Jan 7 12:22:46 2015	CASING COLLAR LOCATOR
F1:GR	Jan 7 12:22:46 2015	GAMMA RAY
F1:ISS	Jan 7 12:22:46 2015	INELASTIC SHORT SPACE COUNT RATE
F1:LS	Jan 7 12:22:46 2015	LONG SPACE COUNT RATE
F1:RATO	Jan 7 12:22:46 2015	SHORT/LONG SPACE COUNT RATE RATIO
F1:RICS	Jan 7 12:22:46 2015	SHORT SPACE INELASTIC TO CAPTURE COUNT RATE RATIO (ISS/CSS)
F1:SGFC	Jan 7 12:22:46 2015	CORRECTED FORMATION SIGMA

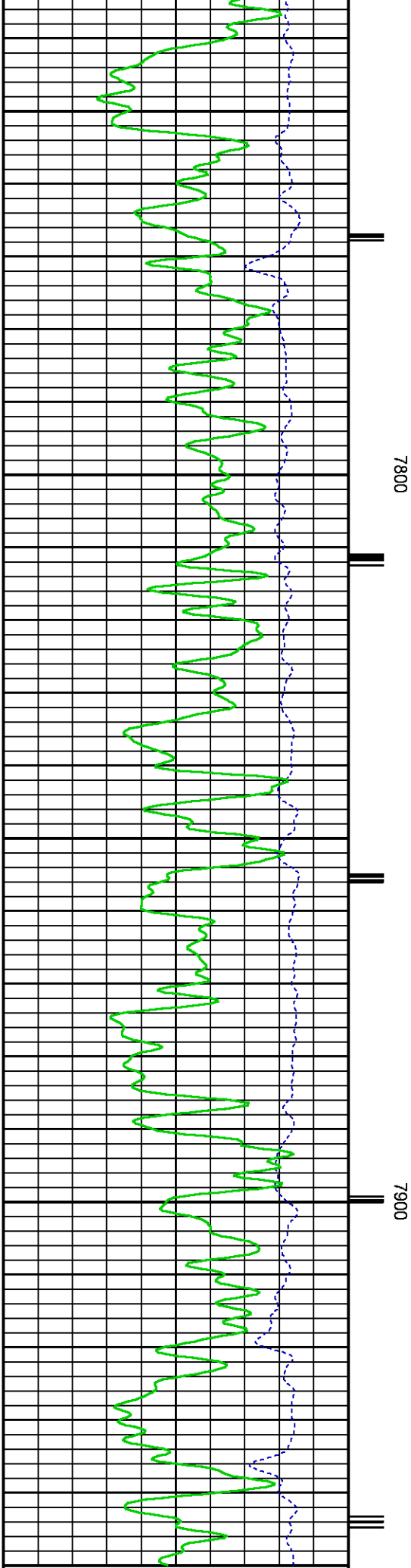
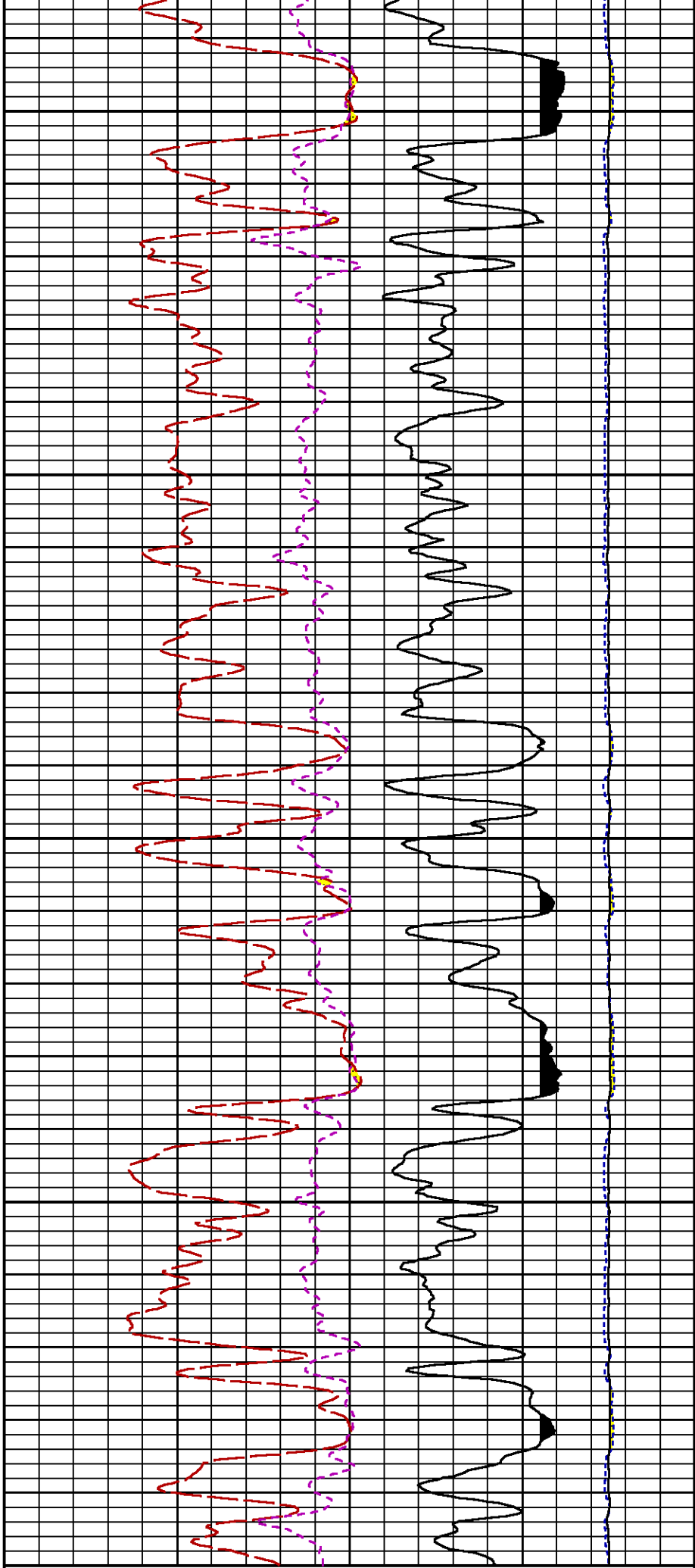
# CURVE MEASURE POINT OFFSET

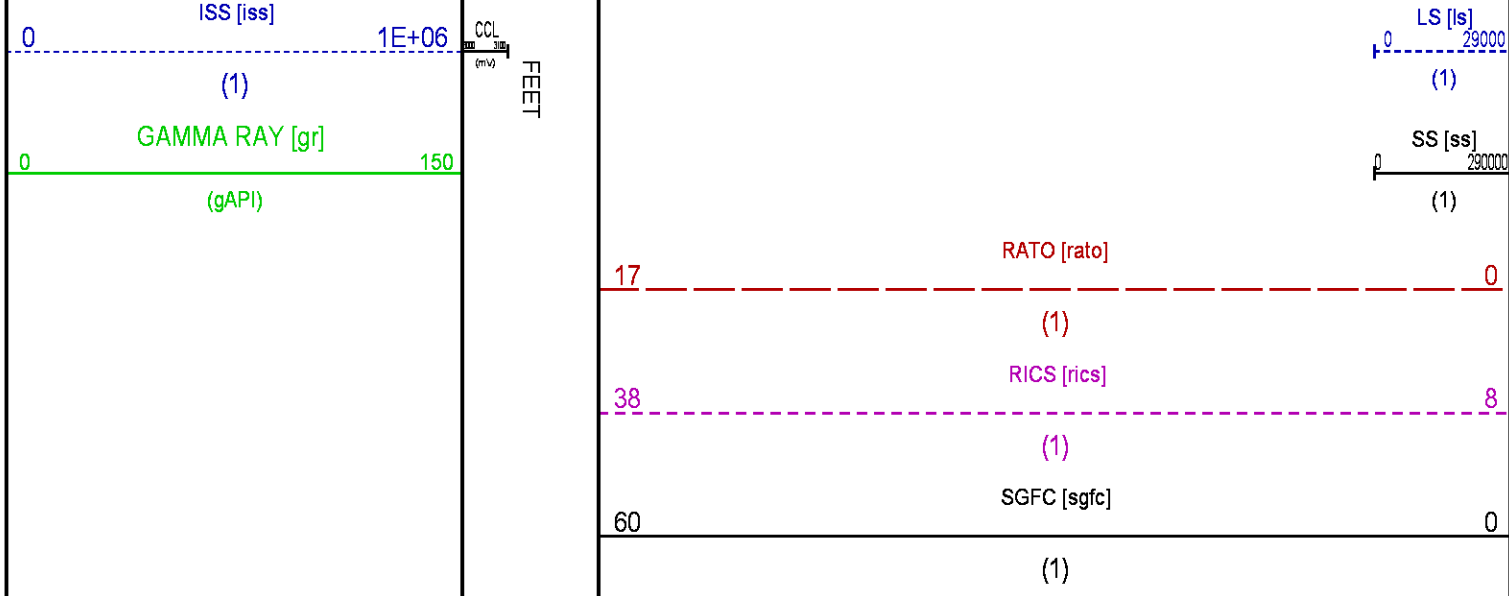
CURVE	OFFSET (ft)	CURVE	OFFSET (ft)	CURVE	OFFSET (ft)	CURVE	OFFSET (ft)
CCL	26.00	ISS	12.75	RATO	12.75	SGFC	12.75
GR	23.00	LS	12.75	RICS	12.75	SS	12.75

Presentation : HL6670:RPM\_REPEAT.fvpdf [5"/100' Scale]  
 Plot Interval : 7640 - 7950 Feet

Data File 1 : F1 : HL6670:/dat1a/CH091647/REPEAT\_RPM.xtf  
 Created On : Jan 7 12:22:46 2015  
 Company : WPX ENERGY ROCKY MTN LLC  
 Well : FEDERAL PA 444-27  
 Field : PARACHUTE  
 File Interval : 17.5 - 8487 Feet  
 OCT : n353h







CALIBRATION / VERIFICATION SUMMARY

Source File: /dat1a/CH091647/n353h\_FINAL.lp1

GR PRIMARY CALIBRATION SUMMARY

TOOL #: 8262XA Z151217 DATE/TIME PERFORMED: Wed Dec 31 14:35:02 2014  
UNIT #: 3880TA HL6670 CALB JIG #: 4702NK DA-041

	BACKGROUND CALBRTR ON (cts/s)	CR DIFF (cts/s)	MULT	BACKGROUND CALBRTR ON (gAPI)	CALBRTR (gAPI)
GR	121.47	460.60	0.531	64.47	180

GR PRIMARY VERIFICATION SUMMARY

TOOL #: 8262XA Z151217 DATE/TIME PERFORMED: Wed Dec 31 14:38:03 2014  
UNIT #: 3880TA HL6670 VERI JIG #: 4702NK DA-041

	BACKGROUND CALBRTR ON (cts/s)	MULT	BACKGROUND CALBRTR ON (gAPI)	DIFF. (gAPI)
GR	120.67	453.71	0.531	64.05
				240.81
				176.77
				170.00 190.00

RPM\_PNC\_3D PRIMARY CALIBRATION SUMMARY

TOOL: 8283PA 10203151 DATE/TIME PERFORMED: Wed Dec 31 14:17:26 2014  
UNIT: 3880TA HL6670 CALIBRATOR: 2437XB 112674 SOURCE: 8281AA 11803641 HOURS: 8281AA 216

	ISS	Mtr Vits (V)	SS Gain	LS Gain	XLS Gain	EA Temp (degF)	Sync Delay (usec)	RCAL
Raw Data	810554	124	2261	2371	2443	104	7	0.9721
Interpolated	1300000	148	2242	2362	2425			
	ISS	BKS	BKL	BKX	SGA1	SDA1	SGA2	SDA2
Raw Data	810554	6220	972	135	26.11	0.15	24.12	0.32
					25.35 26.40	0.00 0.20	23.60 24.80	0.00 0.40



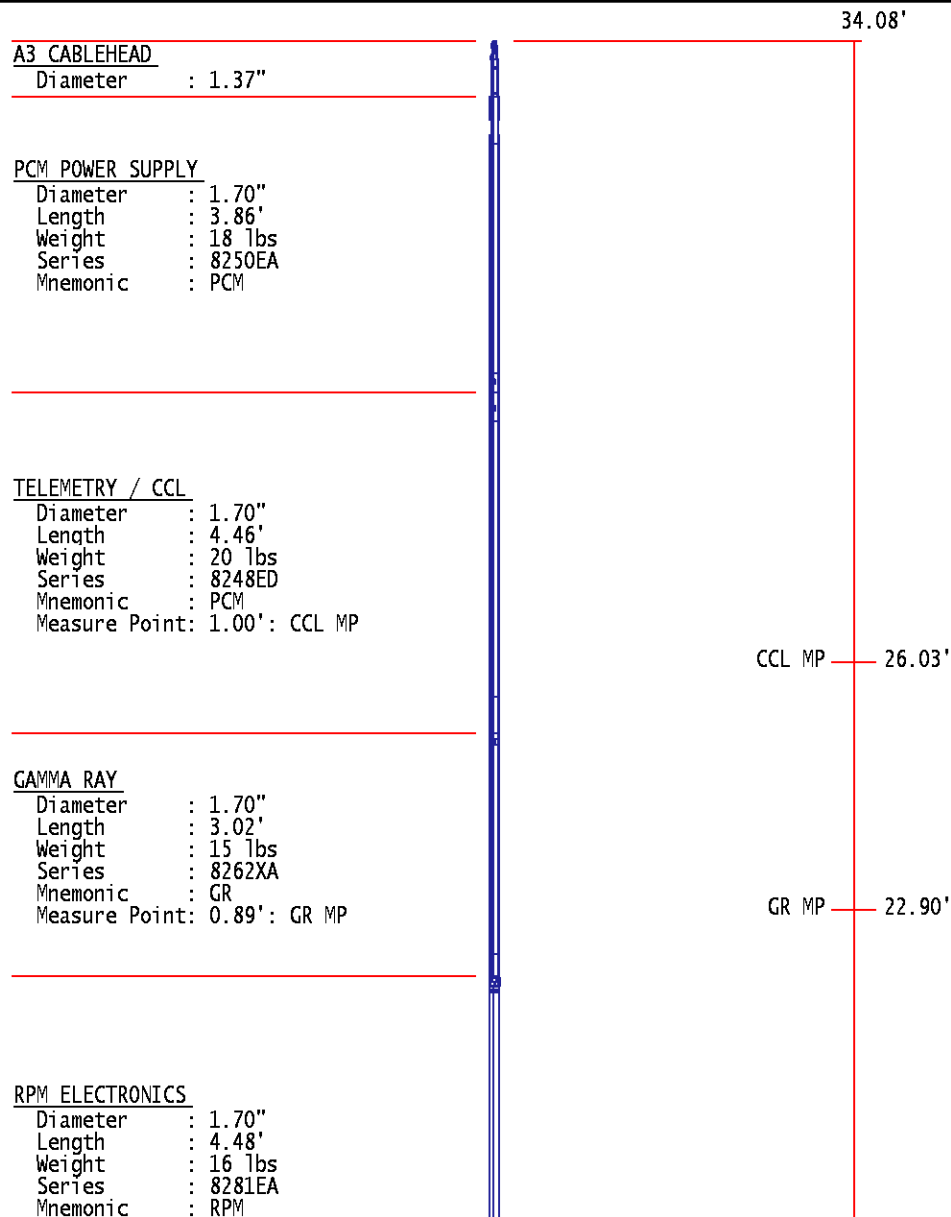
	ISS	ILS	IXS	SS	SS2	LS	CSS	CLS
Raw Data	810554	168008	26262	88979	31657	8212	53866	13125
Fit Quality %		1.005	1.073	1.006	0.963	1.070	0.923	1.075

	ISS	RBOR	RIN	RIN13	RICS	RATO	RTWO	RONE
			ISS/ILS	ISS/IXS	ISS/CSS	SS/LS	SS2/LS	CSS/CLS
Raw Data	810554	1.43	4.82	30.88	15.05	10.84	3.86	4.10
		1.42 1.45	3.55 5.52	22.20 32.70	10.99 16.34	10.06 11.10	3.57 3.95	3.76 4.22
Fit Quality %		0.060	0.116	0.146	0.173	0.107	0.123	0.104
Reduced	1414033	1.43	4.84	30.92	15.08	10.85	3.86	4.11
		1.42 1.45	4.33 5.52	27.60 32.70	13.70 16.34	10.06 11.10	3.57 3.95	3.76 4.22

## INSTRUMENT CONFIGURATION

Source File: /dat1a/CH091647/n353h~FINAL-tdg



RPM C DETECTOR SECTION

Diameter : 1.70"  
Length : 9.40'  
Weight : 41 lbs  
Series : 8283PA  
Mnemonic : RPM  
Measure Point: 5.45': XLS DETECTOR  
Measure Point: 5.04': LS DETECTOR  
Measure Point: 4.79': SS DETECTOR

XLS DETECTOR 13.58'  
LS DETECTOR 13.16'  
SS DETECTOR 12.91'

RPM SOURCE SECTION

Diameter : 1.70"  
Length : 4.70'  
Weight : 18 lbs  
Series : 8281FA  
Mnemonic : RPM

TEMPERATURE / PRESSURE


Diameter : 1.70"  
Length : 3.30'  
Weight : 13 lbs  
Series : 8255XA  
Mnemonic : SRPL  
Measure Point: 1.52': TEMP MP

TEMP MP 1.65'  
PRES MP

BULL PLUG 1 11/16

TOTAL LENGTH: 34.08'  
TOTAL WEIGHT: 144 lbs  
MAX DIAMETER: 0'1.70"

0.00'

	COMPANY	WPX ENERGY ROCKY MTN LLC		FILE NO:	
	WELL	FEDERAL PA 444-27			US091647
	FIELD	PARACHUTE		API NO:	
	COUNTY	GARFIELD	STATE	CO	05045223390000
LOCATION:		ELEVATIONS:		S27 T6S R95W	
SHL: 2405' FNL; 649' FEL		KB 5882 FT		PAD: DOE 2-W-27	
BHL: 1128' FSL; 1168' FEL		DF		NABORS 576	
GL 5856 FT		DATE		07-Jan-2015	
SEC 27 TWP 6S RGE 95W					