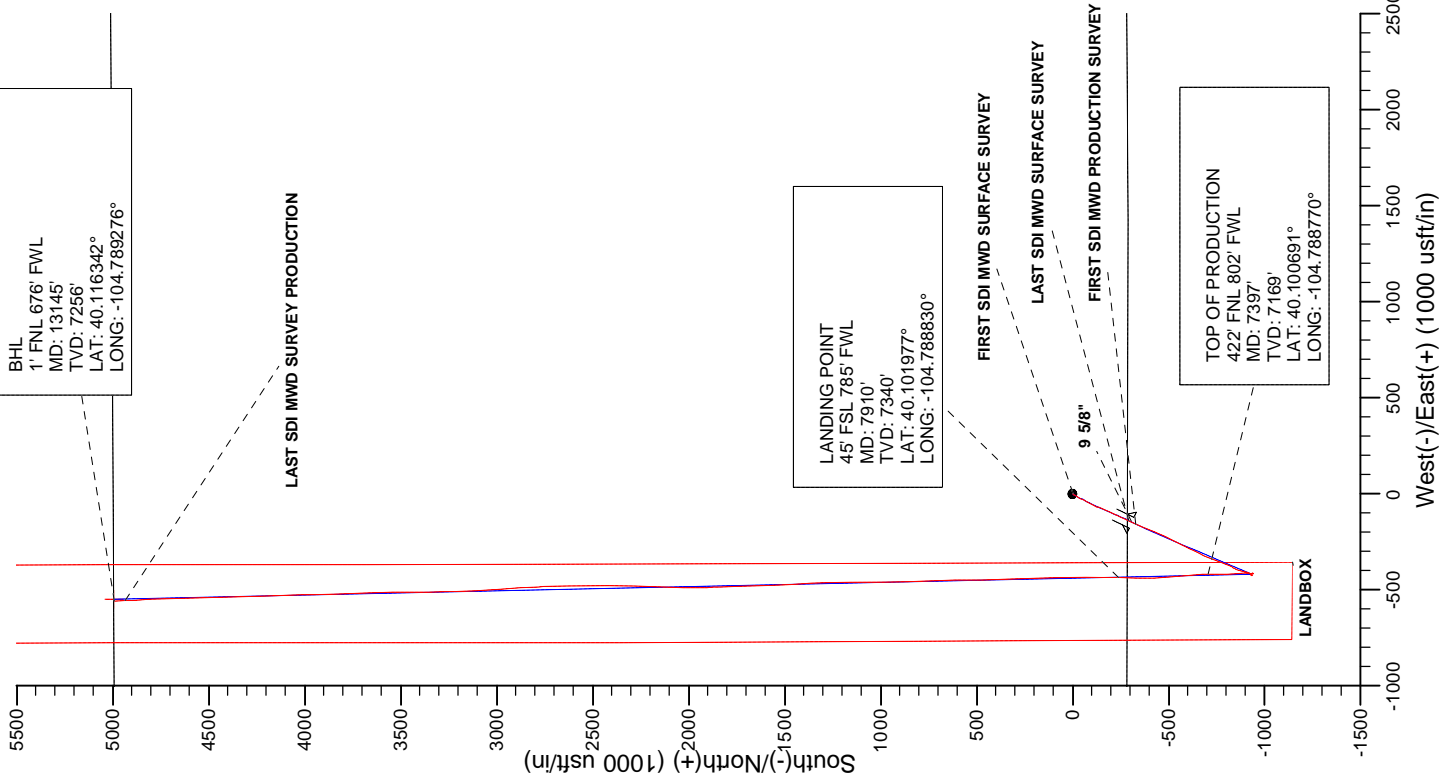
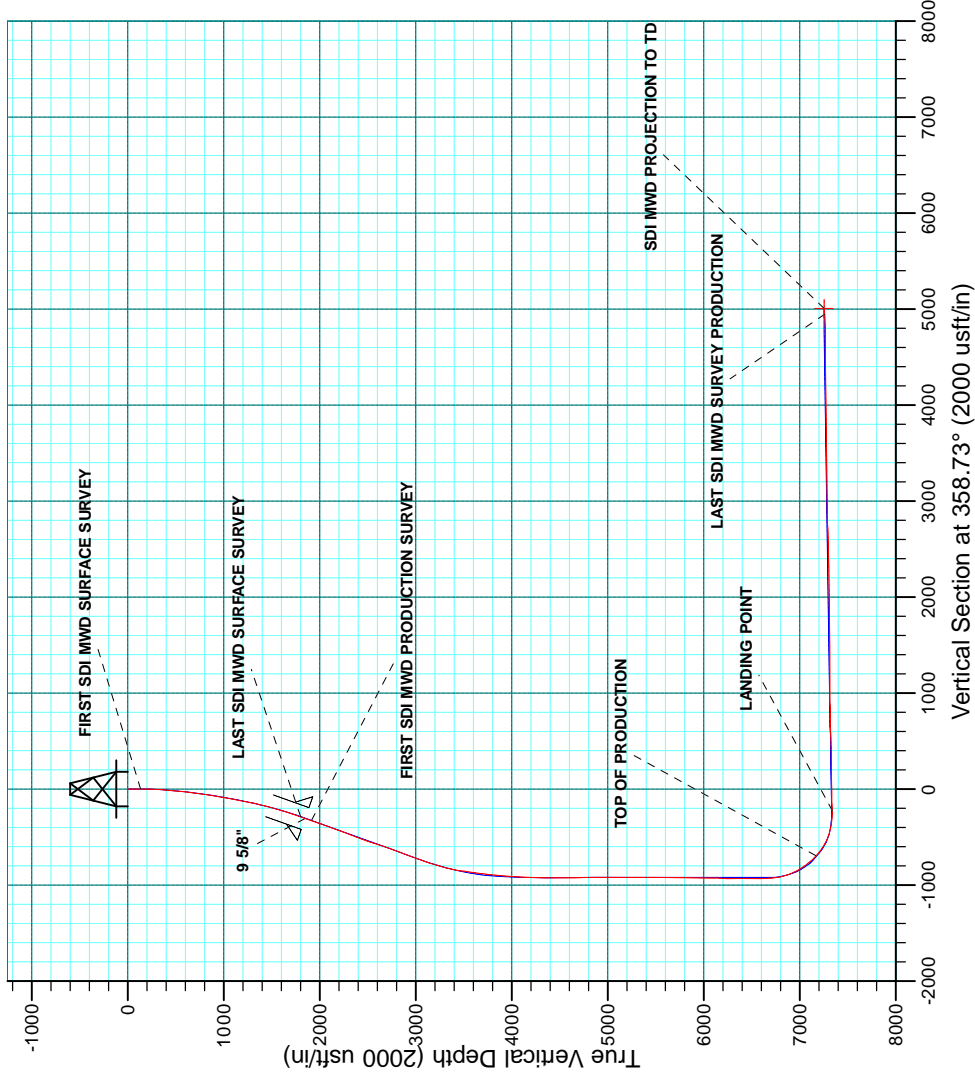


WELL DETAILS: TEDFORD 4N-28HZ				
GL 4965 & KB 25 @ 4990.00usft (HP 307)				
+N/-S 0.00	+E/-W 0.00	Northing 14564177.40	Easting 1699901.52	Latitude 40.102632
				Longitude -104.787274

PROJECT DETAILS: WELD-NAD83-UTMFT13N	
Geodetic System: Universal Transverse Mercator (US Survey Feet)	
Datum: North American Datum 1983	
Ellipsoid: GRS 1980	
Location: Zone: 13N (106 W to 102 W)	
System Datum: Mean Sea Level	



<b>Company:</b>	US ROCKIES WATTENBERG PLANNING	<b>Local Co-ordinate Reference:</b>	Well TEDFORD 4N-28HZ
<b>Project:</b>	WELD-NAD83-UTMFT13N	<b>TVD Reference:</b>	GL 4965 & KB 25 @ 4990.00usft (HP 307)
<b>Site:</b>	2N-66W-28 Tedford Pad	<b>MD Reference:</b>	GL 4965 & KB 25 @ 4990.00usft (HP 307)
<b>Well:</b>	TEDFORD 4N-28HZ	<b>North Reference:</b>	True
<b>Wellbore:</b>	Plan A	<b>Survey Calculation Method:</b>	Minimum Curvature
<b>Design:</b>	OH	<b>Database:</b>	Denver Sales Office

<b>Project</b>	WELD-NAD83-UTMFT13N		
<b>Map System:</b>	Universal Transverse Mercator (US Survey Feet)	<b>System Datum:</b>	Mean Sea Level
<b>Geo Datum:</b>	North American Datum 1983		
<b>Map Zone:</b>	Zone 13N (108 W to 102 W)		

Site		2N-66W-28 Tedford Pad			
Site Position:		Northing:	14,564,177.61 usft	Latitude:	40.102633
From:	Lat/Long	Easting:	1,699,841.68 usft	Longitude:	-104.787488
Position Uncertainty:	0.00 usft	Slot Radius:	13.200 in	Grid Convergence:	0.14 °

Well	TEDFORD 4N-28HZ					
Well Position	+N/-S	0.00 usft	Northing:	14,564,177.39 usft	Latitude:	40.102632
	+E/-W	0.00 usft	Easting:	1,699,901.52 usft	Longitude:	-104.787274
Position Uncertainty		2.68 usft	Wellhead Elevation:	0.00 usft	Ground Level:	4,965.00 usft

<b>Wellbore</b>	Plan A				
<b>Magnetics</b>	<b>Model Name</b>	<b>Sample Date</b>	<b>Declination (°)</b>	<b>Dip Angle (°)</b>	<b>Field Strength (nT)</b>
	HDGM	7/7/2015	8.50	66.62	52,506

<b>Design</b>	OH				
<b>Audit Notes:</b>					
<b>Version:</b>	1.0	<b>Phase:</b>	ACTUAL	<b>Tie On Depth:</b>	0.00
<b>Vertical Section:</b>	<b>Depth From (TVD) (usft)</b>	<b>+N/-S (usft)</b>	<b>+E/-W (usft)</b>	<b>Direction (°)</b>	
	0.00	0.00	0.00	358.73	

<b>Survey Program</b>	<b>Date</b>	9/8/2015			
<b>From (usft)</b>	<b>To (usft)</b>	<b>Survey (Wellbore)</b>	<b>Tool Name</b>	<b>Description</b>	
18.00	1,844.00	Survey #1 SDI MWD SURFACE (Plan A)	APC_ISCWSA REV 2 MWD	Fixed:v2:standard declination	
1,959.00	13,145.00	Survey #2 SDI MWD PRODUCTION (Plan A)	APC_ISCWSA REV 2 MWD+	Fixed:v2:crustal field declination	

<b>Survey</b>										
<b>Measured Depth (usft)</b>	<b>Inclination (°)</b>	<b>Azimuth (°)</b>	<b>Vertical Depth (usft)</b>	<b>+N/-S (usft)</b>	<b>+E/-W (usft)</b>	<b>Vertical Section (usft)</b>	<b>Dogleg Rate (°/100usft)</b>	<b>Build Rate (°/100usft)</b>	<b>Turn Rate (°/100usft)</b>	
0.00	0.00	0.00	0.00	0.00	0.00	0.00	0.00	0.00	0.00	
18.00	0.00	0.00	18.00	0.00	0.00	0.00	0.00	0.00	0.00	
136.00	0.83	163.82	136.00	-0.82	0.24	-0.83	0.70	0.70	0.00	
<b>FIRST SDI MWD SURFACE SURVEY</b>										
227.00	1.88	218.53	226.97	-2.62	-0.51	-2.61	1.71	1.15	60.12	
318.00	3.50	218.41	317.87	-5.97	-3.16	-5.89	1.78	1.78	-0.13	
415.00	4.50	205.55	414.63	-11.72	-6.64	-11.57	1.38	1.03	-13.26	
511.00	6.39	207.54	510.20	-19.85	-10.74	-19.61	1.98	1.97	2.07	
604.00	7.37	210.48	602.53	-29.58	-16.16	-29.22	1.12	1.05	3.16	
700.00	8.29	208.33	697.63	-40.98	-22.57	-40.47	1.01	0.96	-2.24	

<b>Company:</b>	US ROCKIES WATTENBERG PLANNING	<b>Local Co-ordinate Reference:</b>	Well TEDFORD 4N-28HZ
<b>Project:</b>	WELD-NAD83-UTMFT13N	<b>TVD Reference:</b>	GL 4965 & KB 25 @ 4990.00usft (HP 307)
<b>Site:</b>	2N-66W-28 Tedford Pad	<b>MD Reference:</b>	GL 4965 & KB 25 @ 4990.00usft (HP 307)
<b>Well:</b>	TEDFORD 4N-28HZ	<b>North Reference:</b>	True
<b>Wellbore:</b>	Plan A	<b>Survey Calculation Method:</b>	Minimum Curvature
<b>Design:</b>	OH	<b>Database:</b>	Denver Sales Office

Survey									
Measured Depth (usft)	Inclination (°)	Azimuth (°)	Vertical Depth (usft)	+N-S (usft)	+E-W (usft)	Vertical Section (usft)	Dogleg Rate (°/100usft)	Build Rate (°/100usft)	Turn Rate (°/100usft)
795.00	9.62	207.07	791.47	-54.08	-29.43	-53.41	1.42	1.40	-1.33
890.00	10.13	209.26	885.06	-68.44	-37.12	-67.60	0.67	0.54	2.31
984.00	11.40	205.27	977.41	-84.05	-45.13	-83.03	1.57	1.35	-4.24
1,079.00	11.85	207.81	1,070.46	-101.17	-53.69	-99.95	0.72	0.47	2.67
1,174.00	11.72	206.68	1,163.46	-118.42	-62.57	-117.00	0.28	-0.14	-1.19
1,333.00	14.44	200.71	1,318.32	-151.40	-76.84	-149.66	1.91	1.71	-3.75
1,428.00	15.61	201.88	1,410.07	-174.34	-85.79	-172.40	1.27	1.23	1.23
1,523.00	15.97	205.88	1,501.49	-197.96	-96.26	-195.78	1.21	0.38	4.21
1,618.00	17.50	202.97	1,592.47	-222.87	-107.54	-220.43	1.84	1.61	-3.06
1,779.00	20.44	206.44	1,744.71	-270.34	-129.51	-267.41	1.96	1.83	2.16
1,844.00	21.56	205.85	1,805.39	-291.25	-139.77	-288.08	1.75	1.72	-0.91
LAST SDI MWD SURFACE SURVEY									
1,893.20	21.63	204.66	1,851.14	-307.63	-147.49	-304.29	0.90	0.15	-2.42
9 5/8"									
1,959.00	21.74	203.08	1,912.28	-329.86	-157.33	-326.30	0.90	0.17	-2.40
FIRST SDI MWD PRODUCTION SURVEY									
2,054.00	22.27	203.31	2,000.36	-362.58	-171.35	-358.69	0.57	0.56	0.24
2,149.00	21.55	201.68	2,088.50	-395.33	-184.92	-391.13	0.99	-0.76	-1.72
2,243.00	21.99	204.26	2,175.80	-427.41	-198.53	-422.91	1.12	0.47	2.74
2,338.00	21.88	202.91	2,263.92	-459.94	-212.73	-455.11	0.54	-0.12	-1.42
2,432.00	22.06	205.93	2,351.10	-491.95	-227.27	-486.79	1.22	0.19	3.21
2,526.00	22.05	206.97	2,438.22	-523.55	-242.99	-518.03	0.42	-0.01	1.11
2,621.00	22.90	207.06	2,526.00	-555.90	-259.48	-550.01	0.90	0.89	0.09
2,716.00	22.05	206.22	2,613.79	-588.36	-275.77	-582.10	0.96	-0.89	-0.88
2,810.00	21.53	205.32	2,701.07	-619.78	-290.94	-613.18	0.66	-0.55	-0.96
2,905.00	21.49	205.70	2,789.46	-651.22	-305.94	-644.27	0.15	-0.04	0.40
2,999.00	21.51	203.04	2,876.92	-682.59	-320.16	-675.33	1.04	0.02	-2.83
3,093.00	21.61	201.85	2,964.34	-714.51	-333.34	-706.95	0.48	0.11	-1.27
3,188.00	20.74	201.01	3,052.93	-746.45	-345.88	-738.61	0.97	-0.92	-0.88
3,282.00	19.59	201.61	3,141.16	-776.64	-357.66	-768.53	1.24	-1.22	0.64
3,377.00	17.89	202.13	3,231.12	-804.97	-369.02	-796.59	1.80	-1.79	0.55
3,471.00	15.26	205.82	3,321.21	-829.48	-379.85	-820.86	3.01	-2.80	3.93
3,566.00	12.40	208.30	3,413.45	-849.72	-390.13	-840.87	3.07	-3.01	2.61
3,660.00	10.14	200.70	3,505.64	-866.35	-397.84	-857.32	2.87	-2.40	-8.09
3,755.00	8.24	194.30	3,599.41	-880.77	-402.48	-871.64	2.27	-2.00	-6.74
3,849.00	6.81	190.45	3,692.60	-892.78	-405.16	-883.58	1.61	-1.52	-4.10
3,944.00	6.06	190.33	3,787.00	-903.26	-407.08	-894.01	0.79	-0.79	-0.13
4,038.00	4.96	199.82	3,880.57	-911.96	-409.34	-902.66	1.52	-1.17	10.10
4,132.00	4.19	202.70	3,974.27	-918.95	-412.05	-909.59	0.85	-0.82	3.06
4,227.00	3.27	211.85	4,069.07	-924.45	-414.82	-915.03	1.15	-0.97	9.63
4,321.00	2.61	216.86	4,162.94	-928.44	-417.51	-918.96	0.75	-0.70	5.33
4,416.00	2.42	221.10	4,257.85	-931.69	-420.13	-922.15	0.28	-0.20	4.46
4,510.00	1.27	183.47	4,351.81	-934.22	-421.50	-924.65	1.72	-1.22	-40.03
4,605.00	0.50	227.12	4,446.79	-935.55	-421.87	-925.97	1.02	-0.81	45.95

<b>Company:</b>	US ROCKIES WATTENBERG PLANNING	<b>Local Co-ordinate Reference:</b>	Well TEDFORD 4N-28HZ
<b>Project:</b>	WELD-NAD83-UTMFT13N	<b>TVD Reference:</b>	GL 4965 & KB 25 @ 4990.00usft (HP 307)
<b>Site:</b>	2N-66W-28 Tedford Pad	<b>MD Reference:</b>	GL 4965 & KB 25 @ 4990.00usft (HP 307)
<b>Well:</b>	TEDFORD 4N-28HZ	<b>North Reference:</b>	True
<b>Wellbore:</b>	Plan A	<b>Survey Calculation Method:</b>	Minimum Curvature
<b>Design:</b>	OH	<b>Database:</b>	Denver Sales Office

Survey									
Measured Depth (usft)	Inclination (°)	Azimuth (°)	Vertical Depth (usft)	+N-S (usft)	+E-W (usft)	Vertical Section (usft)	Dogleg Rate (°/100usft)	Build Rate (°/100usft)	Turn Rate (°/100usft)
4,794.00	0.96	334.39	4,635.78	-934.69	-423.15	-925.08	0.64	0.24	56.76
4,888.00	1.05	340.67	4,729.77	-933.17	-423.78	-923.54	0.15	0.10	6.68
4,983.00	1.04	348.71	4,824.75	-931.50	-424.24	-921.87	0.15	-0.01	8.46
5,077.00	0.86	20.67	4,918.74	-930.00	-424.15	-920.37	0.59	-0.19	34.00
5,172.00	0.61	108.84	5,013.74	-929.50	-423.42	-919.88	1.09	-0.26	92.81
5,266.00	0.61	93.32	5,107.73	-929.69	-422.45	-920.10	0.18	0.00	-16.51
5,360.00	0.69	75.64	5,201.72	-929.58	-421.40	-920.01	0.23	0.09	-18.81
5,455.00	0.53	75.40	5,296.72	-929.32	-420.42	-919.78	0.17	-0.17	-0.25
5,549.00	1.17	132.96	5,390.71	-929.87	-419.30	-920.35	1.06	0.68	61.23
5,644.00	1.13	128.23	5,485.69	-931.11	-417.86	-921.62	0.11	-0.04	-4.98
5,738.00	1.10	122.98	5,579.67	-932.17	-416.37	-922.72	0.11	-0.03	-5.59
5,832.00	1.02	127.87	5,673.66	-933.18	-414.95	-923.75	0.13	-0.09	5.20
5,927.00	1.00	125.84	5,768.64	-934.18	-413.61	-924.79	0.04	-0.02	-2.14
6,021.00	1.19	173.08	5,862.63	-935.63	-412.83	-926.25	0.95	0.20	50.26
6,116.00	1.06	156.51	5,957.61	-937.42	-412.36	-928.05	0.37	-0.14	-17.44
6,210.00	0.76	246.05	6,051.60	-938.47	-412.59	-929.09	1.38	-0.32	95.26
6,305.00	0.61	229.74	6,146.59	-939.05	-413.55	-929.65	0.26	-0.16	-17.17
6,399.00	0.61	243.68	6,240.59	-939.60	-414.38	-930.18	0.16	0.00	14.83
6,494.00	0.41	221.05	6,335.59	-940.08	-415.05	-930.65	0.29	-0.21	-23.82
6,588.00	0.20	199.38	6,429.58	-940.49	-415.33	-931.05	0.25	-0.22	-23.05
6,683.00	0.10	356.82	6,524.58	-940.56	-415.39	-931.12	0.31	-0.11	165.73
6,777.00	0.20	8.91	6,618.58	-940.31	-415.37	-930.88	0.11	0.11	12.86
6,871.00	2.47	19.76	6,712.55	-938.25	-414.66	-928.83	2.42	2.41	11.54
6,966.00	13.08	4.53	6,806.55	-925.57	-413.11	-916.18	11.28	11.17	-16.03
7,060.00	19.99	358.42	6,896.61	-898.87	-412.71	-889.50	7.57	7.35	-6.50
7,155.00	30.30	356.17	6,982.50	-858.61	-414.77	-849.21	10.90	10.85	-2.37
7,249.00	37.70	357.86	7,060.37	-806.16	-417.43	-796.71	7.94	7.87	1.80
7,344.00	43.45	0.85	7,132.51	-744.41	-418.03	-734.96	6.39	6.05	3.15
7,397.00	47.35	358.88	7,169.72	-706.69	-418.14	-697.24	7.81	7.35	-3.72
TOP OF PRODUCTION (422' FNL & 802' FWL)									
7,438.00	50.38	357.52	7,196.69	-675.83	-419.12	-666.37	7.81	7.40	-3.32
7,533.00	58.01	354.36	7,252.23	-599.06	-424.67	-589.50	8.47	8.03	-3.33
7,627.00	67.83	355.56	7,294.98	-515.78	-431.98	-506.08	10.51	10.45	1.28
7,721.00	77.80	358.76	7,322.72	-426.22	-436.35	-416.44	11.09	10.61	3.40
7,816.00	85.39	0.77	7,336.60	-332.31	-436.72	-322.55	8.26	7.99	2.12
7,910.00	89.50	1.24	7,340.79	-238.44	-435.07	-228.74	4.40	4.37	0.50
LANDING POINT (45' FSL & 785' FWL)									
8,005.00	92.66	0.94	7,339.00	-143.48	-433.27	-133.85	3.34	3.33	-0.32
8,099.00	92.52	359.22	7,334.75	-49.58	-433.13	-39.97	1.83	-0.15	-1.83
8,194.00	91.07	358.70	7,331.77	45.35	-434.86	54.98	1.62	-1.53	-0.55
8,288.00	89.33	358.82	7,331.45	139.32	-436.89	148.97	1.86	-1.85	0.13
8,383.00	90.03	358.22	7,331.98	234.29	-439.35	243.97	0.97	0.74	-0.63
8,477.00	91.51	357.82	7,330.71	328.22	-442.59	337.95	1.63	1.57	-0.43

<b>Company:</b>	US ROCKIES WATTENBERG PLANNING	<b>Local Co-ordinate Reference:</b>	Well TEDFORD 4N-28HZ
<b>Project:</b>	WELD-NAD83-UTMFT13N	<b>TVD Reference:</b>	GL 4965 & KB 25 @ 4990.00usft (HP 307)
<b>Site:</b>	2N-66W-28 Tedford Pad	<b>MD Reference:</b>	GL 4965 & KB 25 @ 4990.00usft (HP 307)
<b>Well:</b>	TEDFORD 4N-28HZ	<b>North Reference:</b>	True
<b>Wellbore:</b>	Plan A	<b>Survey Calculation Method:</b>	Minimum Curvature
<b>Design:</b>	OH	<b>Database:</b>	Denver Sales Office

Survey										
Measured Depth (usft)	Inclination (°)	Azimuth (°)	Vertical Depth (usft)	+N-S (usft)	+E-W (usft)	Vertical Section (usft)	Dogleg Rate (°/100usft)	Build Rate (°/100usft)	Turn Rate (°/100usft)	
8,572.00	91.65	357.75	7,328.09	423.12	-446.26	432.90	0.16	0.15	-0.07	
8,667.00	91.28	359.58	7,325.66	518.05	-448.48	527.87	1.96	-0.39	1.93	
8,761.00	90.91	358.75	7,323.87	612.03	-449.85	621.85	0.97	-0.39	-0.88	
8,856.00	90.54	358.29	7,322.67	706.99	-452.30	716.84	0.62	-0.39	-0.48	
8,950.00	92.08	358.02	7,320.52	800.91	-455.32	810.81	1.66	1.64	-0.29	
9,045.00	92.39	359.14	7,316.81	895.81	-457.68	905.73	1.22	0.33	1.18	
9,139.00	91.18	359.55	7,313.88	989.75	-458.75	999.68	1.36	-1.29	0.44	
9,234.00	90.60	359.83	7,312.41	1,084.74	-459.26	1,094.65	0.68	-0.61	0.29	
9,328.00	89.36	359.74	7,312.44	1,178.74	-459.62	1,188.64	1.32	-1.32	-0.10	
9,423.00	90.60	358.35	7,312.47	1,273.72	-461.20	1,283.63	1.96	1.31	-1.46	
9,518.00	89.40	357.60	7,312.47	1,368.66	-464.56	1,378.62	1.49	-1.26	-0.79	
9,612.00	90.13	356.49	7,312.86	1,462.53	-469.40	1,472.58	1.41	0.78	-1.18	
9,707.00	89.90	357.83	7,312.83	1,557.41	-474.11	1,567.54	1.43	-0.24	1.41	
9,801.00	91.01	357.71	7,312.09	1,651.34	-477.77	1,661.52	1.19	1.18	-0.13	
9,896.00	90.13	358.58	7,311.14	1,746.28	-480.84	1,756.51	1.30	-0.93	0.92	
9,990.00	90.81	357.25	7,310.37	1,840.21	-484.26	1,850.49	1.59	0.72	-1.41	
10,085.00	91.75	359.65	7,308.25	1,935.15	-486.83	1,945.46	2.71	0.99	2.53	
10,179.00	90.60	1.14	7,306.32	2,029.12	-486.18	2,039.40	2.00	-1.22	1.59	
10,274.00	91.41	1.44	7,304.66	2,124.08	-484.05	2,134.29	0.91	0.85	0.32	
10,368.00	90.37	1.18	7,303.20	2,218.04	-481.90	2,228.18	1.14	-1.11	-0.28	
10,463.00	90.54	1.21	7,302.44	2,313.02	-479.92	2,323.09	0.18	0.18	0.03	
10,557.00	90.67	0.93	7,301.45	2,407.00	-478.16	2,417.00	0.33	0.14	-0.30	
10,652.00	91.34	359.27	7,299.78	2,501.98	-477.99	2,511.96	1.88	0.71	-1.75	
10,746.00	92.05	359.37	7,297.00	2,595.93	-479.11	2,605.91	0.76	0.76	0.11	
10,841.00	91.64	359.37	7,293.94	2,690.88	-480.15	2,700.86	0.43	-0.43	0.00	
10,936.00	92.72	356.86	7,290.33	2,785.75	-483.27	2,795.77	2.87	1.14	-2.64	
11,030.00	91.31	356.38	7,287.02	2,879.52	-488.81	2,889.65	1.58	-1.50	-0.51	
11,125.00	89.30	355.38	7,286.52	2,974.27	-495.64	2,984.52	2.36	-2.12	-1.05	
11,219.00	90.20	357.59	7,286.93	3,068.08	-501.40	3,078.44	2.54	0.96	2.35	
11,314.00	91.54	356.97	7,285.49	3,162.96	-505.91	3,173.40	1.55	1.41	-0.65	
11,409.00	90.57	358.66	7,283.74	3,257.87	-509.53	3,268.37	2.05	-1.02	1.78	
11,503.00	91.24	359.01	7,282.25	3,351.84	-511.44	3,362.35	0.80	0.71	0.37	
11,598.00	89.67	359.69	7,281.50	3,446.83	-512.52	3,457.34	1.80	-1.65	0.72	
11,692.00	90.67	0.09	7,281.22	3,540.83	-512.70	3,551.32	1.15	1.06	0.43	
11,787.00	89.83	357.80	7,280.80	3,635.80	-514.45	3,646.31	2.57	-0.88	-2.41	
11,882.00	91.44	358.03	7,279.75	3,730.73	-517.90	3,741.29	1.71	1.69	0.24	
11,976.00	90.70	358.49	7,278.00	3,824.67	-520.76	3,835.27	0.93	-0.79	0.49	
12,071.00	89.46	358.55	7,277.86	3,919.64	-523.21	3,930.27	1.31	-1.31	0.06	
12,165.00	90.40	358.65	7,277.98	4,013.61	-525.51	4,024.27	1.01	1.00	0.11	
12,260.00	91.21	357.90	7,276.64	4,108.55	-528.37	4,119.26	1.16	0.85	-0.79	
12,354.00	90.17	358.66	7,275.51	4,202.50	-531.19	4,213.24	1.37	-1.11	0.81	
12,449.00	91.07	357.97	7,274.48	4,297.45	-533.98	4,308.23	1.19	0.95	-0.73	
12,543.00	91.54	357.98	7,272.34	4,391.37	-537.30	4,402.20	0.50	0.50	0.01	
12,638.00	90.37	359.12	7,270.76	4,486.32	-539.70	4,497.18	1.72	-1.23	1.20	

<b>Company:</b>	US ROCKIES WATTENBERG PLANNING	<b>Local Co-ordinate Reference:</b>	Well TEDFORD 4N-28HZ
<b>Project:</b>	WELD-NAD83-UTMFT13N	<b>TVD Reference:</b>	GL 4965 & KB 25 @ 4990.00usft (HP 307)
<b>Site:</b>	2N-66W-28 Tedford Pad	<b>MD Reference:</b>	GL 4965 & KB 25 @ 4990.00usft (HP 307)
<b>Well:</b>	TEDFORD 4N-28HZ	<b>North Reference:</b>	True
<b>Wellbore:</b>	Plan A	<b>Survey Calculation Method:</b>	Minimum Curvature
<b>Design:</b>	OH	<b>Database:</b>	Denver Sales Office

Survey									
Measured Depth (usft)	Inclination (°)	Azimuth (°)	Vertical Depth (usft)	+N/-S (usft)	+E/-W (usft)	Vertical Section (usft)	Dogleg Rate (°/100usft)	Build Rate (°/100usft)	Turn Rate (°/100usft)
12,732.00	91.11	358.18	7,269.55	4,580.29	-541.92	4,591.18	1.27	0.79	-1.00
12,921.00	90.94	358.30	7,266.16	4,769.17	-547.72	4,780.14	0.11	-0.09	0.06
13,088.00	93.23	356.18	7,260.09	4,935.85	-555.76	4,946.95	1.87	1.37	-1.27
LAST SDI MWD SURVEY PRODUCTION									
13,145.00	93.23	356.18	7,256.88	4,992.63	-559.55	5,003.80	0.00	0.00	0.00
SDI MWD PROJECTION TO TD (1' FNL & 676' FWL)									

Casing Points				
Measured Depth (usft)	Vertical Depth (usft)	Name	Casing Diameter (in)	Hole Diameter (in)
1,893.20	1,851.14	9 5/8"	9.625	13.500

Design Annotations				
Measured Depth (usft)	Vertical Depth (usft)	Local Coordinates		Comment
		+N/-S (usft)	+E/-W (usft)	
136.00	136.00	-0.82	0.24	FIRST SDI MWD SURFACE SURVEY
1,844.00	1,805.39	-291.25	-139.77	LAST SDI MWD SURFACE SURVEY
1,959.00	1,912.28	-329.86	-157.33	FIRST SDI MWD PRODUCTION SURVEY
7,397.00	7,169.72	-706.69	-418.14	TOP OF PRODUCTION (422' FNL & 802' FWL)
7,910.00	7,340.79	-238.44	-435.07	LANDING POINT (45' FSL & 785' FWL)
13,088.00	7,260.09	4,935.85	-555.76	LAST SDI MWD SURVEY PRODUCTION
13,145.00	7,256.88	4,992.63	-559.55	SDI MWD PROJECTION TO TD (1' FNL & 676' FWL)

Checked By: \_\_\_\_\_ Approved By: \_\_\_\_\_ Date: \_\_\_\_\_