

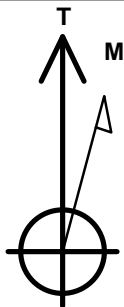
# Bayswater Exploration & Production, LLC

Well Name: **Mojack N-28HN**

Surface Location: Mojack 28-C Pad (East) Sec.28-T7N-R64W  
 North American Datum 1983 , US State Plane 1983 , Colorado Northern Zone  
 Ground Elevation: 4900.0  
 +N/-S +E/-W Northing Easting Latitude Longitude Slot  
 0.0 0.0 1444865.11 3263611.55 40.550684 -104.551368  
 RKB - 22.5' WELL @ 4922.5ft (RKB - 22.5')

## WELLBORE TARGET DETAILS

Name	TVD	+N/-S	+E/-W	Shape
SHL 230'FNL & 1716'FEL, SEC.28	1.0	0.0	0.0	Point
BHL 470'FSL & 833'FEL, SEC.33	7020.5	-9816.2	739.5	Point
WP#1 (N-28HN)	7045.0	-7949.9	766.2	Point
LPL (N-28HN)	7080.5	-300.8	875.7	Point



Azimuths to True North  
 Magnetic North: 8.18°

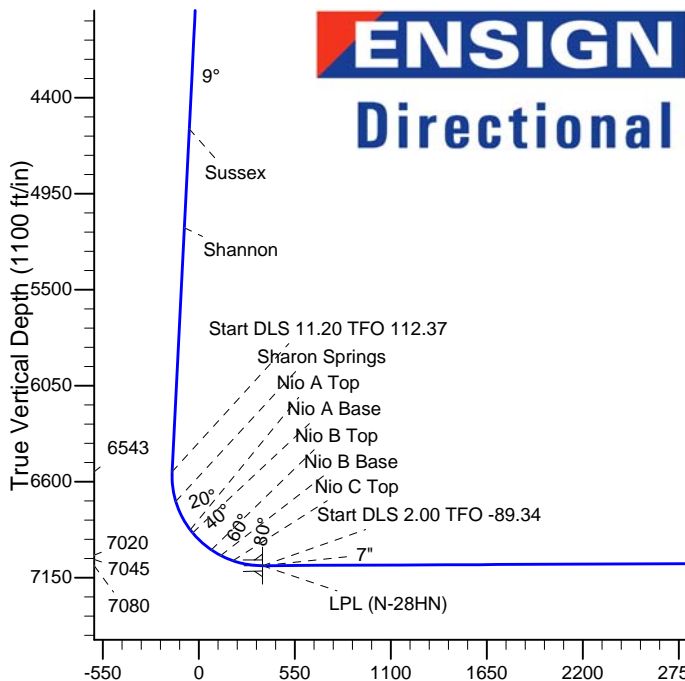
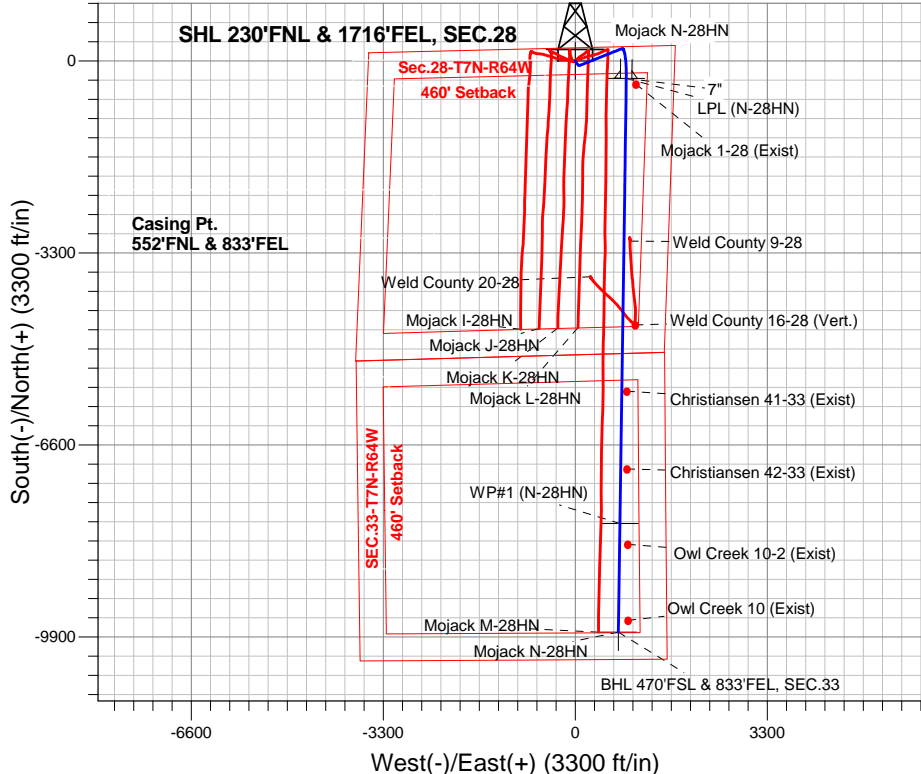
Magnetic Field  
 Strength: 52778.1snT  
 Dip Angle: 67.06°  
 Date: 10/2/2015  
 Model: IGRF2010

Mojack 28-C Pad (East) Sec.28-T7N-R64W  
 Mojack N-28HN  
 Plan #3 (9-30-15)  
 11:35, October 02 2015

## ANNOTATIONS

TVD	MD	Annotation
200.0	200.0	KOP - Start Build 2.00
1497.2	1500.0	Start DLS 2.00 TFO -101.88
6542.9	6611.7	Start DLS 11.20 TFO 112.37
7080.5	7450.1	Start DLS 2.00 TFO -89.34
7045.0	15100.0	Start DLS 2.00 TFO -0.08
7020.5	16966.7	TD at 16966.7

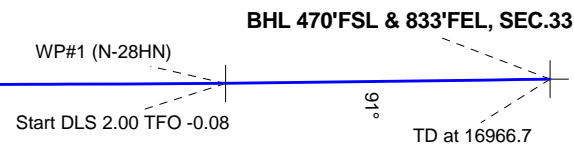
South(-)/North(+) (3300 ft/in)



## SECTION DETAILS

Sec	MD	Inc	Azi	TVD	+N/-S	+E/-W	DLeg	TFace	VSec	Target
1	0.0	0.00	0.00	0.0	0.0	0.0	0.00	0.00	0.0	
2	200.0	0.00	0.00	200.0	0.0	0.0	0.00	0.00	0.0	
3	400.0	4.00	146.00	399.8	-5.8	3.9	2.00	146.00	6.1	
4	1500.0	4.00	146.00	1497.2	-69.4	46.8	0.00	0.00	72.7	
5	1972.8	9.47	68.31	1967.2	-68.7	92.3	2.00	-101.88	75.4	
6	6611.7	9.47	68.31	6542.9	213.4	801.5	0.00	0.00	-152.6	
7	7450.1	90.26	181.00	7080.5	-300.8	875.7	11.20	112.37	365.7	LPL (N-28HN)
8	7459.0	90.27	180.82	7080.5	-309.8	875.6	2.00	-89.34	374.7	
9	15100.0	90.27	180.82	7045.0	-7949.9	766.2	0.00	0.00	7985.0	WP#1 (N-28HN)
10	15124.5	90.76	180.82	7044.8	-7974.4	765.8	2.00	-0.08	8009.4	
11	16966.7	90.76	180.82	7020.5	-9816.2	739.5	0.00	0.00	9844.0	BHL 470'FSL & 833'FEL, SEC.33

Vertical Section at 175.69° (1100 ft/in)





# **Bayswater Exploration & Production, LLC**

**SEC.28-T7N-R64W**

**Mojack 28-C Pad (East) Sec.28-T7N-R64W**

**Mojack N-28HN**

**Wellbore #1**

**Plan: Plan #3 (9-30-15)**

## **Standard Planning Report**

**02 October, 2015**



**BAYSWATER**  
**EXPLORATION & PRODUCTION, LLC**

<b>Database:</b>	EDMNEW	<b>Local Co-ordinate Reference:</b>	Well Mojack N-28HN
<b>Company:</b>	Bayswater Exploration & Production, LLC	<b>TVD Reference:</b>	WELL @ 4922.5ft (RKB - 22.5')
<b>Project:</b>	SEC.28-T7N-R64W	<b>MD Reference:</b>	WELL @ 4922.5ft (RKB - 22.5')
<b>Site:</b>	Mojack 28-C Pad (East) Sec.28-T7N-R64W	<b>North Reference:</b>	True
<b>Well:</b>	Mojack N-28HN	<b>Survey Calculation Method:</b>	Minimum Curvature
<b>Wellbore:</b>	Wellbore #1		
<b>Design:</b>	Plan #3 (9-30-15)		

<b>Project</b>	SEC.28-T7N-R64W, Weld County, Colorado		
<b>Map System:</b>	US State Plane 1983	<b>System Datum:</b>	Mean Sea Level
<b>Geo Datum:</b>	North American Datum 1983		Using Well Reference Point
<b>Map Zone:</b>	Colorado Northern Zone		Using geodetic scale factor

Site		Mojack 28-C Pad (East) Sec.28-T7N-R64W			
Site Position:		Northing:	1,444,862.34 ft	Latitude:	40.550679
From:	Lat/Long	Easting:	3,263,521.54 ft	Longitude:	-104.551692
Position Uncertainty:	0.0 ft	Slot Radius:	"	Grid Convergence:	0.61 °

Well	Mojack N-28HN					
Well Position	+N-S	1.8 ft	Northing:	1,444,865.11 ft	Latitude:	40.550684
	+E-W	90.0 ft	Easting:	3,263,611.55 ft	Longitude:	-104.551368
Position Uncertainty		0.0 ft	Wellhead Elevation:	ft	Ground Level:	4,900.0 ft

<b>Wellbore</b>	Wellbore #1				
<b>Magnetics</b>	<b>Model Name</b>	<b>Sample Date</b>	<b>Declination (°)</b>	<b>Dip Angle (°)</b>	<b>Field Strength (nT)</b>
	IGRF2010	10/2/2015	8.18	67.06	52,778

<b>Design</b>	Plan #3 (9-30-15)			
<b>Audit Notes:</b>				
<b>Version:</b>	<b>Phase:</b>	PROTOTYPE	<b>Tie On Depth:</b>	0.0
<b>Vertical Section:</b>	<b>Depth From (TVD) (ft)</b>	<b>+N/-S (ft)</b>	<b>+E/-W (ft)</b>	<b>Direction (°)</b>
	0.0	0.0	0.0	175.69

<b>Plan Sections</b>										
Measured Depth (ft)	Inclination (°)	Azimuth (°)	Vertical Depth (ft)	+N/-S (ft)	+E/-W (ft)	Dogleg Rate (°/100ft)	Build Rate (°/100ft)	Turn Rate (°/100ft)	TFO (°)	Target
0.0	0.00	0.00	0.0	0.0	0.0	0.00	0.00	0.00	0.00	
200.0	0.00	0.00	200.0	0.0	0.0	0.00	0.00	0.00	0.00	
400.0	4.00	146.00	399.8	-5.8	3.9	2.00	2.00	0.00	146.00	
1,500.0	4.00	146.00	1,497.2	-69.4	46.8	0.00	0.00	0.00	0.00	
1,972.8	9.47	68.31	1,967.2	-68.7	92.3	2.00	1.16	-16.43	-101.88	
6,611.7	9.47	68.31	6,542.9	213.4	801.5	0.00	0.00	0.00	0.00	
7,450.1	90.26	181.00	7,080.5	-300.8	875.7	11.20	9.64	13.44	112.37	LPL (N-28HN)
7,459.0	90.27	180.82	7,080.5	-309.8	875.6	2.00	0.02	-2.00	-89.34	
15,100.0	90.27	180.82	7,045.0	-7,949.9	766.2	0.00	0.00	0.00	0.00	WP#1 (N-28HN)
15,124.5	90.76	180.82	7,044.8	-7,974.4	765.8	2.00	2.00	0.00	-0.08	
16,966.7	90.76	180.82	7,020.5	-9,816.2	739.5	0.00	0.00	0.00	0.00	BHL 470'FSL & 833

<b>Database:</b>	EDMNEW	<b>Local Co-ordinate Reference:</b>	Well Mojack N-28HN
<b>Company:</b>	Bayswater Exploration & Production, LLC	<b>TVD Reference:</b>	WELL @ 4922.5ft (RKB - 22.5')
<b>Project:</b>	SEC.28-T7N-R64W	<b>MD Reference:</b>	WELL @ 4922.5ft (RKB - 22.5')
<b>Site:</b>	Mojack 28-C Pad (East) Sec.28-T7N-R64W	<b>North Reference:</b>	True
<b>Well:</b>	Mojack N-28HN	<b>Survey Calculation Method:</b>	Minimum Curvature
<b>Wellbore:</b>	Wellbore #1		
<b>Design:</b>	Plan #3 (9-30-15)		

Planned Survey									
Measured Depth (ft)	Inclination (°)	Azimuth (°)	Vertical Depth (ft)	+N/-S (ft)	+E/-W (ft)	Vertical Section (ft)	Dogleg Rate (°/100ft)	Build Rate (°/100ft)	Turn Rate (°/100ft)
0.0	0.00	0.00	0.0	0.0	0.0	0.0	0.00	0.00	0.00
100.0	0.00	0.00	100.0	0.0	0.0	0.0	0.00	0.00	0.00
200.0	0.00	0.00	200.0	0.0	0.0	0.0	0.00	0.00	0.00
<b>KOP - Start Build 2.00</b>									
300.0	2.00	146.00	300.0	-1.4	1.0	1.5	2.00	2.00	0.00
400.0	4.00	146.00	399.8	-5.8	3.9	6.1	2.00	2.00	0.00
500.0	4.00	146.00	499.6	-11.6	7.8	12.1	0.00	0.00	0.00
600.0	4.00	146.00	599.4	-17.4	11.7	18.2	0.00	0.00	0.00
700.0	4.00	146.00	699.1	-23.1	15.6	24.2	0.00	0.00	0.00
800.0	4.00	146.00	798.9	-28.9	19.5	30.3	0.00	0.00	0.00
900.0	4.00	146.00	898.6	-34.7	23.4	36.4	0.00	0.00	0.00
1,000.0	4.00	146.00	998.4	-40.5	27.3	42.4	0.00	0.00	0.00
1,100.0	4.00	146.00	1,098.1	-46.3	31.2	48.5	0.00	0.00	0.00
1,200.0	4.00	146.00	1,197.9	-52.1	35.1	54.5	0.00	0.00	0.00
1,300.0	4.00	146.00	1,297.6	-57.8	39.0	60.6	0.00	0.00	0.00
1,400.0	4.00	146.00	1,397.4	-63.6	42.9	66.7	0.00	0.00	0.00
1,500.0	4.00	146.00	1,497.2	-69.4	46.8	72.7	0.00	0.00	0.00
<b>Start DLS 2.00 TFO -101.88</b>									
1,600.0	4.09	117.36	1,596.9	-73.9	51.9	77.6	2.00	0.09	-28.64
1,700.0	5.04	94.99	1,696.6	-75.9	59.5	80.2	2.00	0.95	-22.37
1,800.0	6.49	81.10	1,796.1	-75.5	69.4	80.5	2.00	1.45	-13.89
1,900.0	8.17	72.56	1,895.3	-72.5	81.8	78.4	2.00	1.68	-8.54
1,972.8	9.47	68.31	1,967.2	-68.7	92.3	75.4	2.00	1.79	-5.84
2,000.0	9.47	68.31	1,994.1	-67.0	96.4	74.1	0.00	0.00	0.00
2,100.0	9.47	68.31	2,092.7	-61.0	111.7	69.2	0.00	0.00	0.00
2,200.0	9.47	68.31	2,191.3	-54.9	127.0	64.3	0.00	0.00	0.00
2,300.0	9.47	68.31	2,290.0	-48.8	142.3	59.3	0.00	0.00	0.00
2,400.0	9.47	68.31	2,388.6	-42.7	157.6	54.4	0.00	0.00	0.00
2,500.0	9.47	68.31	2,487.2	-36.6	172.9	49.5	0.00	0.00	0.00
2,600.0	9.47	68.31	2,585.9	-30.5	188.2	44.6	0.00	0.00	0.00
2,700.0	9.47	68.31	2,684.5	-24.5	203.5	39.7	0.00	0.00	0.00
2,800.0	9.47	68.31	2,783.2	-18.4	218.8	34.8	0.00	0.00	0.00
2,900.0	9.47	68.31	2,881.8	-12.3	234.0	29.8	0.00	0.00	0.00
3,000.0	9.47	68.31	2,980.4	-6.2	249.3	24.9	0.00	0.00	0.00
3,100.0	9.47	68.31	3,079.1	-0.1	264.6	20.0	0.00	0.00	0.00
3,200.0	9.47	68.31	3,177.7	5.9	279.9	15.1	0.00	0.00	0.00
3,300.0	9.47	68.31	3,276.3	12.0	295.2	10.2	0.00	0.00	0.00
3,400.0	9.47	68.31	3,375.0	18.1	310.5	5.3	0.00	0.00	0.00
3,500.0	9.47	68.31	3,473.6	24.2	325.8	0.3	0.00	0.00	0.00
3,600.0	9.47	68.31	3,572.2	30.3	341.1	-4.6	0.00	0.00	0.00
3,700.0	9.47	68.31	3,670.9	36.4	356.4	-9.5	0.00	0.00	0.00
3,800.0	9.47	68.31	3,769.5	42.4	371.6	-14.4	0.00	0.00	0.00
3,848.6	9.47	68.31	3,817.5	45.4	379.1	-16.8	0.00	0.00	0.00
<b>Parkman</b>									
3,900.0	9.47	68.31	3,868.2	48.5	386.9	-19.3	0.00	0.00	0.00
4,000.0	9.47	68.31	3,966.8	54.6	402.2	-24.2	0.00	0.00	0.00
4,100.0	9.47	68.31	4,065.4	60.7	417.5	-29.1	0.00	0.00	0.00
4,200.0	9.47	68.31	4,164.1	66.8	432.8	-34.1	0.00	0.00	0.00
4,300.0	9.47	68.31	4,262.7	72.8	448.1	-39.0	0.00	0.00	0.00
4,400.0	9.47	68.31	4,361.3	78.9	463.4	-43.9	0.00	0.00	0.00
4,500.0	9.47	68.31	4,460.0	85.0	478.7	-48.8	0.00	0.00	0.00
4,600.0	9.47	68.31	4,558.6	91.1	494.0	-53.7	0.00	0.00	0.00
4,620.2	9.47	68.31	4,578.5	92.3	497.0	-54.7	0.00	0.00	0.00
<b>Sussex</b>									

<b>Database:</b>	EDMNEW	<b>Local Co-ordinate Reference:</b>	Well Mojack N-28HN
<b>Company:</b>	Bayswater Exploration & Production, LLC	<b>TVD Reference:</b>	WELL @ 4922.5ft (RKB - 22.5')
<b>Project:</b>	SEC.28-T7N-R64W	<b>MD Reference:</b>	WELL @ 4922.5ft (RKB - 22.5')
<b>Site:</b>	Mojack 28-C Pad (East) Sec.28-T7N-R64W	<b>North Reference:</b>	True
<b>Well:</b>	Mojack N-28HN	<b>Survey Calculation Method:</b>	Minimum Curvature
<b>Wellbore:</b>	Wellbore #1		
<b>Design:</b>	Plan #3 (9-30-15)		

Planned Survey									
Measured Depth (ft)	Inclination (°)	Azimuth (°)	Vertical Depth (ft)	+N/-S (ft)	+E/-W (ft)	Vertical Section (ft)	Dogleg Rate (°/100ft)	Build Rate (°/100ft)	Turn Rate (°/100ft)
4,700.0	9.47	68.31	4,657.3	97.2	509.2	-58.6	0.00	0.00	0.00
4,800.0	9.47	68.31	4,755.9	103.3	524.5	-63.6	0.00	0.00	0.00
4,900.0	9.47	68.31	4,854.5	109.3	539.8	-68.5	0.00	0.00	0.00
5,000.0	9.47	68.31	4,953.2	115.4	555.1	-73.4	0.00	0.00	0.00
5,100.0	9.47	68.31	5,051.8	121.5	570.4	-78.3	0.00	0.00	0.00
5,194.0	9.47	68.31	5,144.5	127.2	584.8	-82.9	0.00	0.00	0.00
<b>Shannon</b>									
5,200.0	9.47	68.31	5,150.4	127.6	585.7	-83.2	0.00	0.00	0.00
5,300.0	9.47	68.31	5,249.1	133.7	601.0	-88.1	0.00	0.00	0.00
5,400.0	9.47	68.31	5,347.7	139.7	616.3	-93.1	0.00	0.00	0.00
5,500.0	9.47	68.31	5,446.3	145.8	631.6	-98.0	0.00	0.00	0.00
5,600.0	9.47	68.31	5,545.0	151.9	646.9	-102.9	0.00	0.00	0.00
5,700.0	9.47	68.31	5,643.6	158.0	662.1	-107.8	0.00	0.00	0.00
5,800.0	9.47	68.31	5,742.3	164.1	677.4	-112.7	0.00	0.00	0.00
5,900.0	9.47	68.31	5,840.9	170.2	692.7	-117.6	0.00	0.00	0.00
6,000.0	9.47	68.31	5,939.5	176.2	708.0	-122.6	0.00	0.00	0.00
6,100.0	9.47	68.31	6,038.2	182.3	723.3	-127.5	0.00	0.00	0.00
6,200.0	9.47	68.31	6,136.8	188.4	738.6	-132.4	0.00	0.00	0.00
6,300.0	9.47	68.31	6,235.4	194.5	753.9	-137.3	0.00	0.00	0.00
6,400.0	9.47	68.31	6,334.1	200.6	769.2	-142.2	0.00	0.00	0.00
6,500.0	9.47	68.31	6,432.7	206.6	784.5	-147.1	0.00	0.00	0.00
6,600.0	9.47	68.31	6,531.4	212.7	799.7	-152.1	0.00	0.00	0.00
6,611.7	9.47	68.31	6,542.9	213.4	801.5	-152.6	0.00	0.00	0.00
<b>Start DLS 11.20 TFO 112.37</b>									
6,700.0	10.75	126.75	6,630.0	211.2	814.9	-149.4	11.21	1.45	66.19
6,785.1	18.00	152.68	6,712.5	194.7	827.3	-132.0	11.20	8.52	30.46
<b>Sharon Springs</b>									
6,800.0	19.47	155.15	6,726.6	190.4	829.4	-127.6	11.20	9.86	16.55
6,900.0	29.86	165.40	6,817.4	151.1	842.8	-87.3	11.20	10.39	10.26
6,969.8	37.37	169.33	6,875.5	113.4	851.1	-49.1	11.20	10.76	5.63
<b>Nio A Top</b>									
6,991.5	39.73	170.29	6,892.5	100.1	853.5	-35.7	11.20	10.86	4.39
<b>Nio A Base</b>									
7,000.0	40.65	170.63	6,899.0	94.7	854.4	-30.2	11.20	10.88	4.09
7,100.0	51.60	173.95	6,968.2	23.3	863.8	41.6	11.20	10.94	3.32
7,137.7	55.75	174.94	6,990.5	-6.9	866.8	72.0	11.20	11.00	2.63
<b>Nio B Top</b>									
7,200.0	62.61	176.38	7,022.4	-60.2	870.8	125.4	11.20	11.02	2.32
7,200.2	62.61	176.38	7,022.5	-60.4	870.8	125.6	0.00	0.00	0.00
<b>Nio B Base</b>									
7,276.6	71.07	177.93	7,052.5	-130.5	874.2	195.8	11.23	11.08	2.03
<b>Nio C Top</b>									
7,300.0	73.66	178.37	7,059.6	-152.8	875.0	218.1	11.20	11.06	1.88
7,400.0	84.72	180.14	7,078.3	-250.8	876.2	315.9	11.20	11.06	1.77
7,450.1	90.26	181.00	7,080.5	-300.8	875.7	365.8	11.19	11.06	1.71
<b>Start DLS 2.00 TFO -89.34 - 7"</b>									
7,459.0	90.27	180.82	7,080.5	-309.8	875.6	374.7	2.01	0.02	-2.01
7,500.0	90.27	180.82	7,080.3	-350.7	875.0	415.5	0.00	0.00	0.00
7,600.0	90.27	180.82	7,079.8	-450.7	873.5	515.1	0.00	0.00	0.00
7,700.0	90.27	180.82	7,079.3	-550.7	872.1	614.7	0.00	0.00	0.00
7,800.0	90.27	180.82	7,078.9	-650.7	870.7	714.3	0.00	0.00	0.00
7,900.0	90.27	180.82	7,078.4	-750.7	869.2	813.9	0.00	0.00	0.00
8,000.0	90.27	180.82	7,077.9	-850.7	867.8	913.5	0.00	0.00	0.00

<b>Database:</b>	EDMNEW	<b>Local Co-ordinate Reference:</b>	Well Mojack N-28HN
<b>Company:</b>	Bayswater Exploration & Production, LLC	<b>TVD Reference:</b>	WELL @ 4922.5ft (RKB - 22.5')
<b>Project:</b>	SEC.28-T7N-R64W	<b>MD Reference:</b>	WELL @ 4922.5ft (RKB - 22.5')
<b>Site:</b>	Mojack 28-C Pad (East) Sec.28-T7N-R64W	<b>North Reference:</b>	True
<b>Well:</b>	Mojack N-28HN	<b>Survey Calculation Method:</b>	Minimum Curvature
<b>Wellbore:</b>	Wellbore #1		
<b>Design:</b>	Plan #3 (9-30-15)		

Planned Survey									
Measured Depth (ft)	Inclination (°)	Azimuth (°)	Vertical Depth (ft)	+N/-S (ft)	+E/-W (ft)	Vertical Section (ft)	Dogleg Rate (°/100ft)	Build Rate (°/100ft)	Turn Rate (°/100ft)
8,100.0	90.27	180.82	7,077.5	-950.7	866.4	1,013.1	0.00	0.00	0.00
8,200.0	90.27	180.82	7,077.0	-1,050.7	865.0	1,112.7	0.00	0.00	0.00
8,300.0	90.27	180.82	7,076.6	-1,150.7	863.5	1,212.3	0.00	0.00	0.00
8,400.0	90.27	180.82	7,076.1	-1,250.6	862.1	1,311.9	0.00	0.00	0.00
8,500.0	90.27	180.82	7,075.6	-1,350.6	860.7	1,411.5	0.00	0.00	0.00
8,600.0	90.27	180.82	7,075.2	-1,450.6	859.2	1,511.1	0.00	0.00	0.00
8,700.0	90.27	180.82	7,074.7	-1,550.6	857.8	1,610.7	0.00	0.00	0.00
8,800.0	90.27	180.82	7,074.2	-1,650.6	856.4	1,710.3	0.00	0.00	0.00
8,900.0	90.27	180.82	7,073.8	-1,750.6	854.9	1,809.9	0.00	0.00	0.00
9,000.0	90.27	180.82	7,073.3	-1,850.6	853.5	1,909.5	0.00	0.00	0.00
9,100.0	90.27	180.82	7,072.8	-1,950.6	852.1	2,009.1	0.00	0.00	0.00
9,200.0	90.27	180.82	7,072.4	-2,050.6	850.6	2,108.7	0.00	0.00	0.00
9,300.0	90.27	180.82	7,071.9	-2,150.5	849.2	2,208.3	0.00	0.00	0.00
9,400.0	90.27	180.82	7,071.5	-2,250.5	847.8	2,307.9	0.00	0.00	0.00
9,500.0	90.27	180.82	7,071.0	-2,350.5	846.3	2,407.5	0.00	0.00	0.00
9,600.0	90.27	180.82	7,070.5	-2,450.5	844.9	2,507.1	0.00	0.00	0.00
9,700.0	90.27	180.82	7,070.1	-2,550.5	843.5	2,606.7	0.00	0.00	0.00
9,800.0	90.27	180.82	7,069.6	-2,650.5	842.1	2,706.3	0.00	0.00	0.00
9,900.0	90.27	180.82	7,069.1	-2,750.5	840.6	2,805.9	0.00	0.00	0.00
10,000.0	90.27	180.82	7,068.7	-2,850.5	839.2	2,905.4	0.00	0.00	0.00
10,100.0	90.27	180.82	7,068.2	-2,950.4	837.8	3,005.0	0.00	0.00	0.00
10,200.0	90.27	180.82	7,067.7	-3,050.4	836.3	3,104.6	0.00	0.00	0.00
10,300.0	90.27	180.82	7,067.3	-3,150.4	834.9	3,204.2	0.00	0.00	0.00
10,400.0	90.27	180.82	7,066.8	-3,250.4	833.5	3,303.8	0.00	0.00	0.00
10,500.0	90.27	180.82	7,066.3	-3,350.4	832.0	3,403.4	0.00	0.00	0.00
10,600.0	90.27	180.82	7,065.9	-3,450.4	830.6	3,503.0	0.00	0.00	0.00
10,700.0	90.27	180.82	7,065.4	-3,550.4	829.2	3,602.6	0.00	0.00	0.00
10,800.0	90.27	180.82	7,065.0	-3,650.4	827.7	3,702.2	0.00	0.00	0.00
10,900.0	90.27	180.82	7,064.5	-3,750.4	826.3	3,801.8	0.00	0.00	0.00
11,000.0	90.27	180.82	7,064.0	-3,850.3	824.9	3,901.4	0.00	0.00	0.00
11,100.0	90.27	180.82	7,063.6	-3,950.3	823.4	4,001.0	0.00	0.00	0.00
11,200.0	90.27	180.82	7,063.1	-4,050.3	822.0	4,100.6	0.00	0.00	0.00
11,300.0	90.27	180.82	7,062.6	-4,150.3	820.6	4,200.2	0.00	0.00	0.00
11,400.0	90.27	180.82	7,062.2	-4,250.3	819.2	4,299.8	0.00	0.00	0.00
11,500.0	90.27	180.82	7,061.7	-4,350.3	817.7	4,399.4	0.00	0.00	0.00
11,600.0	90.27	180.82	7,061.2	-4,450.3	816.3	4,499.0	0.00	0.00	0.00
11,700.0	90.27	180.82	7,060.8	-4,550.3	814.9	4,598.6	0.00	0.00	0.00
11,800.0	90.27	180.82	7,060.3	-4,650.3	813.4	4,698.2	0.00	0.00	0.00
11,900.0	90.27	180.82	7,059.8	-4,750.2	812.0	4,797.8	0.00	0.00	0.00
12,000.0	90.27	180.82	7,059.4	-4,850.2	810.6	4,897.4	0.00	0.00	0.00
12,100.0	90.27	180.82	7,058.9	-4,950.2	809.1	4,997.0	0.00	0.00	0.00
12,200.0	90.27	180.82	7,058.5	-5,050.2	807.7	5,096.6	0.00	0.00	0.00
12,300.0	90.27	180.82	7,058.0	-5,150.2	806.3	5,196.2	0.00	0.00	0.00
12,400.0	90.27	180.82	7,057.5	-5,250.2	804.8	5,295.8	0.00	0.00	0.00
12,500.0	90.27	180.82	7,057.1	-5,350.2	803.4	5,395.4	0.00	0.00	0.00
12,600.0	90.27	180.82	7,056.6	-5,450.2	802.0	5,495.0	0.00	0.00	0.00
12,700.0	90.27	180.82	7,056.1	-5,550.2	800.5	5,594.6	0.00	0.00	0.00
12,800.0	90.27	180.82	7,055.7	-5,650.1	799.1	5,694.2	0.00	0.00	0.00
12,900.0	90.27	180.82	7,055.2	-5,750.1	797.7	5,793.8	0.00	0.00	0.00
13,000.0	90.27	180.82	7,054.7	-5,850.1	796.3	5,893.4	0.00	0.00	0.00
13,100.0	90.27	180.82	7,054.3	-5,950.1	794.8	5,993.0	0.00	0.00	0.00
13,200.0	90.27	180.82	7,053.8	-6,050.1	793.4	6,092.6	0.00	0.00	0.00
13,300.0	90.27	180.82	7,053.4	-6,150.1	792.0	6,192.2	0.00	0.00	0.00
13,400.0	90.27	180.82	7,052.9	-6,250.1	790.5	6,291.8	0.00	0.00	0.00

<b>Database:</b>	EDMNEW	<b>Local Co-ordinate Reference:</b>	Well Mojack N-28HN
<b>Company:</b>	Bayswater Exploration & Production, LLC	<b>TVD Reference:</b>	WELL @ 4922.5ft (RKB - 22.5')
<b>Project:</b>	SEC.28-T7N-R64W	<b>MD Reference:</b>	WELL @ 4922.5ft (RKB - 22.5')
<b>Site:</b>	Mojack 28-C Pad (East) Sec.28-T7N-R64W	<b>North Reference:</b>	True
<b>Well:</b>	Mojack N-28HN	<b>Survey Calculation Method:</b>	Minimum Curvature
<b>Wellbore:</b>	Wellbore #1		
<b>Design:</b>	Plan #3 (9-30-15)		

Planned Survey									
Measured Depth (ft)	Inclination (°)	Azimuth (°)	Vertical Depth (ft)	+N/-S (ft)	+E/-W (ft)	Vertical Section (ft)	Dogleg Rate (°/100ft)	Build Rate (°/100ft)	Turn Rate (°/100ft)
13,500.0	90.27	180.82	7,052.4	-6,350.1	789.1	6,391.4	0.00	0.00	0.00
13,600.0	90.27	180.82	7,052.0	-6,450.1	787.7	6,491.0	0.00	0.00	0.00
13,700.0	90.27	180.82	7,051.5	-6,550.0	786.2	6,590.6	0.00	0.00	0.00
13,800.0	90.27	180.82	7,051.0	-6,650.0	784.8	6,690.2	0.00	0.00	0.00
13,900.0	90.27	180.82	7,050.6	-6,750.0	783.4	6,789.8	0.00	0.00	0.00
14,000.0	90.27	180.82	7,050.1	-6,850.0	781.9	6,889.4	0.00	0.00	0.00
14,100.0	90.27	180.82	7,049.6	-6,950.0	780.5	6,989.0	0.00	0.00	0.00
14,200.0	90.27	180.82	7,049.2	-7,050.0	779.1	7,088.6	0.00	0.00	0.00
14,300.0	90.27	180.82	7,048.7	-7,150.0	777.6	7,188.2	0.00	0.00	0.00
14,400.0	90.27	180.82	7,048.2	-7,250.0	776.2	7,287.8	0.00	0.00	0.00
14,500.0	90.27	180.82	7,047.8	-7,350.0	774.8	7,387.4	0.00	0.00	0.00
14,600.0	90.27	180.82	7,047.3	-7,449.9	773.4	7,487.0	0.00	0.00	0.00
14,700.0	90.27	180.82	7,046.9	-7,549.9	771.9	7,586.6	0.00	0.00	0.00
14,800.0	90.27	180.82	7,046.4	-7,649.9	770.5	7,686.2	0.00	0.00	0.00
14,900.0	90.27	180.82	7,045.9	-7,749.9	769.1	7,785.8	0.00	0.00	0.00
15,000.0	90.27	180.82	7,045.5	-7,849.9	767.6	7,885.4	0.00	0.00	0.00
15,100.0	90.27	180.82	7,045.0	-7,949.9	766.2	7,985.0	0.00	0.00	0.00
Start DLS 2.00 TFO -0.08									
15,124.5	90.76	180.82	7,044.8	-7,974.4	765.8	8,009.4	2.00	2.00	0.00
15,200.0	90.76	180.82	7,043.8	-8,049.9	764.8	8,084.6	0.00	0.00	0.00
15,300.0	90.76	180.82	7,042.5	-8,149.8	763.3	8,184.2	0.00	0.00	0.00
15,400.0	90.76	180.82	7,041.2	-8,249.8	761.9	8,283.8	0.00	0.00	0.00
15,500.0	90.76	180.82	7,039.8	-8,349.8	760.5	8,383.3	0.00	0.00	0.00
15,600.0	90.76	180.82	7,038.5	-8,449.8	759.1	8,482.9	0.00	0.00	0.00
15,700.0	90.76	180.82	7,037.2	-8,549.8	757.6	8,582.5	0.00	0.00	0.00
15,800.0	90.76	180.82	7,035.9	-8,649.8	756.2	8,682.1	0.00	0.00	0.00
15,900.0	90.76	180.82	7,034.6	-8,749.7	754.8	8,781.7	0.00	0.00	0.00
16,000.0	90.76	180.82	7,033.2	-8,849.7	753.3	8,881.3	0.00	0.00	0.00
16,100.0	90.76	180.82	7,031.9	-8,949.7	751.9	8,980.9	0.00	0.00	0.00
16,200.0	90.76	180.82	7,030.6	-9,049.7	750.5	9,080.5	0.00	0.00	0.00
16,300.0	90.76	180.82	7,029.3	-9,149.7	749.0	9,180.1	0.00	0.00	0.00
16,400.0	90.76	180.82	7,028.0	-9,249.6	747.6	9,279.7	0.00	0.00	0.00
16,500.0	90.76	180.82	7,026.7	-9,349.6	746.2	9,379.3	0.00	0.00	0.00
16,600.0	90.76	180.82	7,025.3	-9,449.6	744.8	9,478.8	0.00	0.00	0.00
16,700.0	90.76	180.82	7,024.0	-9,549.6	743.3	9,578.4	0.00	0.00	0.00
16,800.0	90.76	180.82	7,022.7	-9,649.6	741.9	9,678.0	0.00	0.00	0.00
16,900.0	90.76	180.82	7,021.4	-9,749.5	740.5	9,777.6	0.00	0.00	0.00
16,966.7	90.76	180.82	7,020.5	-9,816.2	739.5	9,844.0	0.00	0.00	0.00



<b>Database:</b>	EDMNEW	<b>Local Co-ordinate Reference:</b>	Well Mojack N-28HN
<b>Company:</b>	Bayswater Exploration & Production, LLC	<b>TVD Reference:</b>	WELL @ 4922.5ft (RKB - 22.5')
<b>Project:</b>	SEC.28-T7N-R64W	<b>MD Reference:</b>	WELL @ 4922.5ft (RKB - 22.5')
<b>Site:</b>	Mojack 28-C Pad (East) Sec.28-T7N-R64W	<b>North Reference:</b>	True
<b>Well:</b>	Mojack N-28HN	<b>Survey Calculation Method:</b>	Minimum Curvature
<b>Wellbore:</b>	Wellbore #1		
<b>Design:</b>	Plan #3 (9-30-15)		

Targets									
Target Name - hit/miss target - Shape	Dip Angle (°)	Dip Dir. (°)	TVD (ft)	+N/-S (ft)	+E/-W (ft)	Northing (ft)	Easting (ft)	Latitude	Longitude
SHL 230'FNL & 1716' - plan hits target center - Point	0.00	0.00	1.0	0.0	0.0	1,444,865.13	3,263,611.55	40.550684	-104.551368
LPL (N-28HN) - plan hits target center - Point	0.00	0.00	7,080.5	-300.8	875.7	1,444,573.71	3,264,490.39	40.549858	-104.548217
BHL 470'FSL & 833'F - plan hits target center - Point	0.00	0.00	7,020.5	-9,816.2	739.5	1,435,057.67	3,264,456.00	40.523740	-104.548708
WP#1 (N-28HN) - plan hits target center - Point	0.00	0.00	7,045.0	-7,949.9	766.2	1,436,924.12	3,264,462.73	40.528863	-104.548612

Casing Points					
Measured Depth (ft)	Vertical Depth (ft)	Name	Casing Diameter (")	Hole Diameter (")	
7,450.1	7,080.5	7"	7	7-1/2	

Formations						
Measured Depth (ft)	Vertical Depth (ft)	Name	Lithology	Dip (°)	Dip Direction (°)	
3,848.6	3,817.5	Parkman				
4,620.2	4,578.5	Sussex				
5,194.0	5,144.5	Shannon				
6,785.1	6,712.5	Sharon Springs				
6,969.8	6,875.5	Nio A Top				
6,991.5	6,892.5	Nio A Base				
7,137.7	6,990.5	Nio B Top				
7,200.2	7,022.5	Nio B Base				
7,276.6	7,052.5	Nio C Top				
	7,092.5	Nio C Base				
	7,120.5	Fort Hays				
	7,164.5	Codell				
	7,180.5	Base of Codell				

Plan Annotations					
Measured Depth (ft)	Vertical Depth (ft)	Local Coordinates			
		+N/-S (ft)	+E/-W (ft)	Comment	
200.0	200.0	0.0	0.0	KOP - Start Build 2.00	
1,500.0	1,497.2	-5.8	3.9	Start DLS 2.00 TFO -101.88	
6,611.7	6,542.9	-69.4	46.8	Start DLS 11.20 TFO 112.37	
7,450.1	7,080.5	-68.7	92.3	Start DLS 2.00 TFO -89.34	
15,100.0	7,045.0	213.4	801.5	Start DLS 2.00 TFO -0.08	
16,966.7	7,020.5	-300.8	875.7	TD at 16966.7	