

0297175

GO INTERNATIONAL

CEMENT BOND LOG
WITH WAVE TRAIN DISPLAY

FILING NO.

ZI 432848

ORIGINAL

COMPANY TAIGA ENERGYWELL FEDERAL 3L-20FIELD WILDCATCOUNTY RIO BLANCO STATE COLORADOLOCATION NW/SW 05-103-08049-0000

Other Services

TOC @ 3700'

SEC 20 TWP 4S RGE 102W

gamma ray log

jet perforate

Permanent Datum GL Elev. 8477
 Log Measured from KB, 9 Ft. Above Permanent Datum
 Drilling Measured from KB

Elevations:
 KB 8486
 DF
 GL 8477

Date	7-27-77		Type Fluid in Hole		WATER	
Run No.	ONE		Dens.	Visc.		
Depth-Driller	N/A		Max. Rec. Temp.			
Depth-Logger	5159		Est. Cement Top		3700	
Btm. Log Interval	5153		Equip.	Location	6033	25-78
Top Log Interval	3600		Recorded By		HUSKEY	
Open Hole Size			Witnessed By		MR. BRANDLY	
CASING REC.	Size	Wt/Ft	Grade	Type Joint	Top	Bottom
Surface String						
Prot. String						
Prod. String	5 1/2	15.50				
Liner						

PRIMARY CEMENTING DATA

STRING	Surface	Protection	Production	Liner
Vol. of cement				
Type of cement				
Additive				
Additive by %				
Retarder				
Retarder by %				
Wt. of slurry				
Water Loss				
Drill. mud type				
Drilling mud wt.				

COMPRESSIVE STRENGTH (p.s.i. Curing Temp.)

Time Elapsed	Surface	°F	Protective	°F	Production	°F	Liner	°F
24 hrs.		°F		°F		°F		°F
48 hrs.		°F		°F		°F		°F
72 hrs.		°F		°F		°F		°F

PRIMARY CEMENTING PROCEDURE

BOND EQUIPMENT DATA

Hour — Date	HOURS FROM START OF OPERATION	RUN NO.	STAND OFF	TOOL TYPE
Started pumping cement			centralized	sonic
Plug on bottom			LOGGING SPEED 30 foot per minute	
Release pressure			BIAS: MAX.	SPACING foot
Start Cement Bond Log			CARTRIDGE NO.	TOOL NO. CB-160
Finish Cement Bond Log			RECORDER I. D.	
Preceding fluid	Volume	bbls.	Pipe reciprocated during Pumping: Yes	No
Returns: Full	Partial	None	Pipe reciprocated after plug down: Yes	min., No

Run No. Gamma-Ray	Run No. Neutron
Tool Model No.	Tool Serial No.
Diameter	Tool Model No. ; Type
Detector Model No.	Diameter ; Spacing
Type ; Length	Detector Mod. No. ; Type
Distance to N. Source	Source Type ; Strength
	Source Serial No.

GENERAL

GAMMA - RAY

NEUTRON

Run No.	DEPTHS	Speed Ft./Min.	T.C. Sec.	Bkg. Cps.	Cal. Cps.	Sens. Settings	Zero Div. L or R	API GR Units Per Log Div.	T.C. Sec.	Bkg. Cps.	Cal. Cps.	Sens. Settings	Zero Div. L or R	API N. Units Per Log Div.
	TO FROM													

REMARKS:

SIGNATURE CURVE RECORDING

DEPTH

AMPLITUDE CURVE

SINGLE RECEIVER TRAVEL TIME

0 MICRO SECONDS 1000

MILLIVOLTS

MICRO SECONDS / FT.

SEISMIC SPECTRUM RECORDING

0 ← BONDING INCREASES 50 ← TRAVEL TIME INCREASES

MICRO SECONDS

140 TRAVEL TIME 40

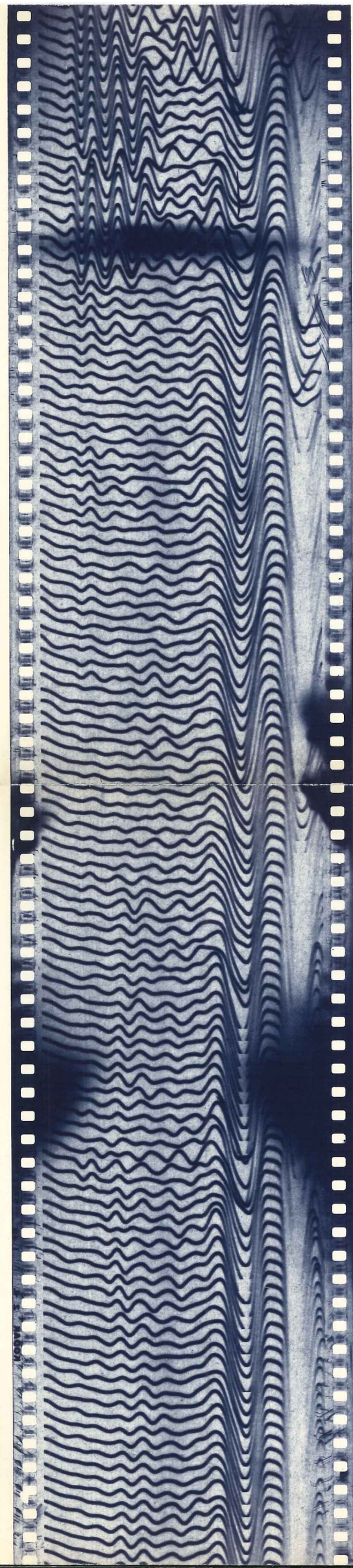
100 PERCENTAGE BONDING 0 CASING COLLAR

3600

MICRO SECONDS PER FOOT

40

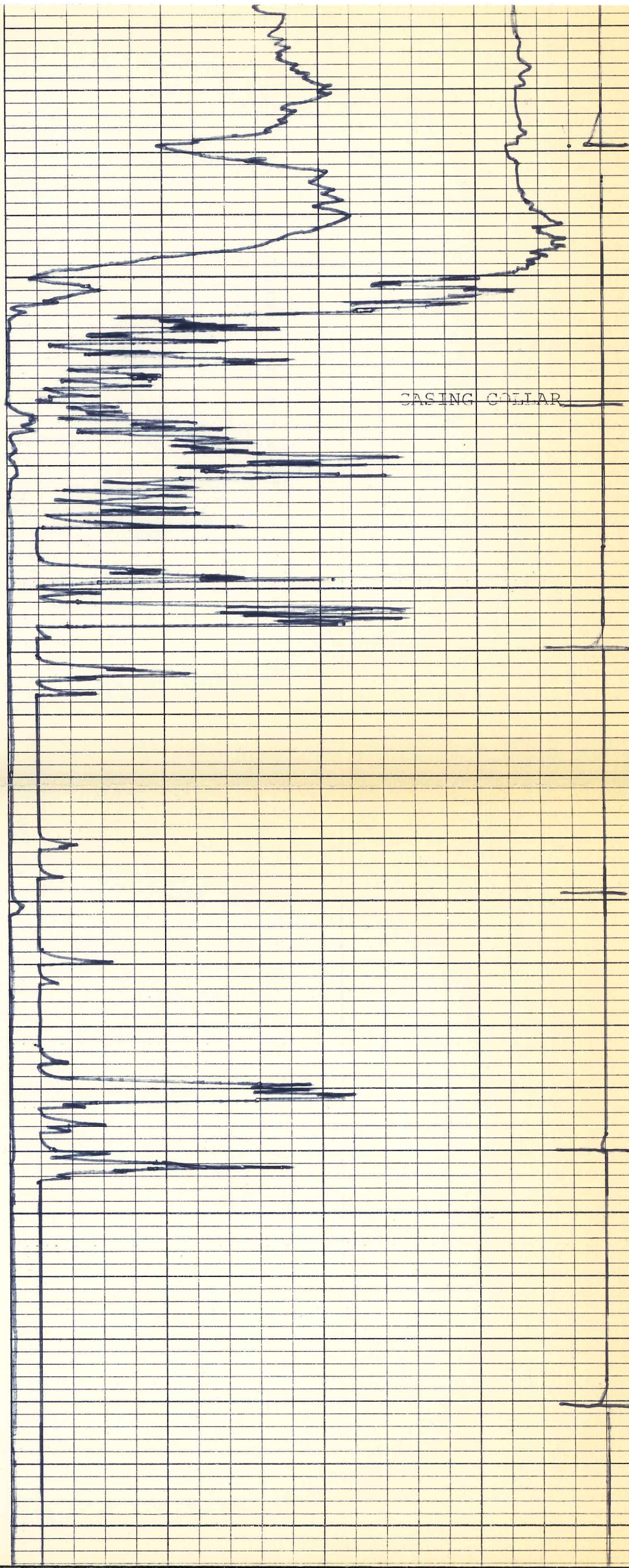
100 PERCENTAGE BONDED 0

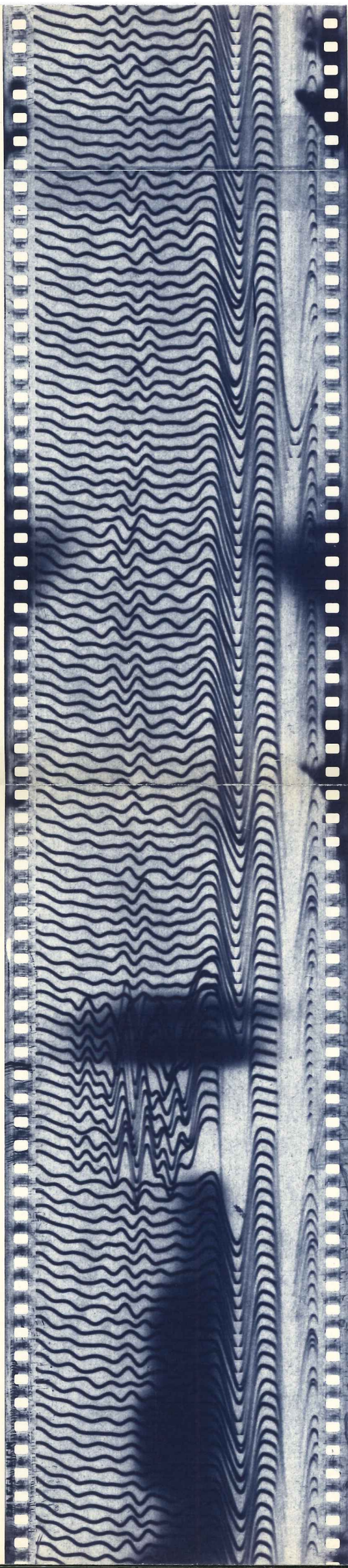


3700

3800

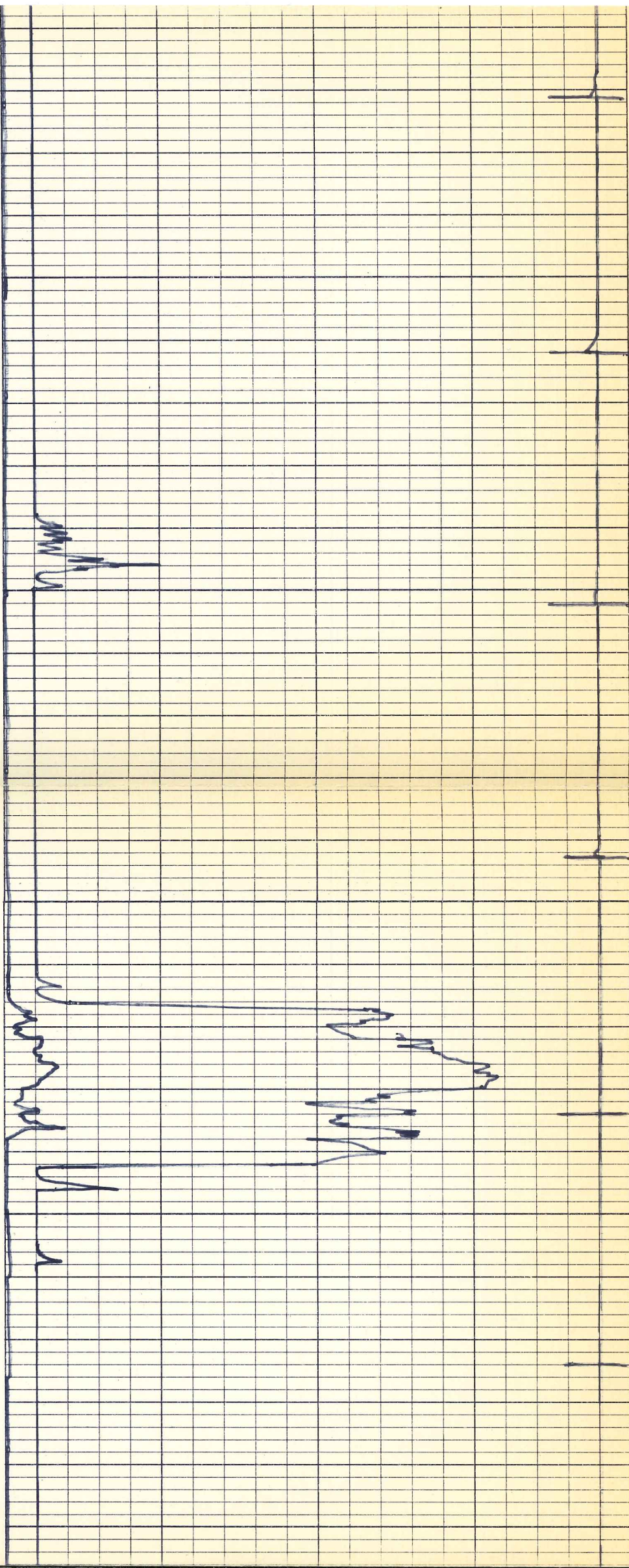
3900

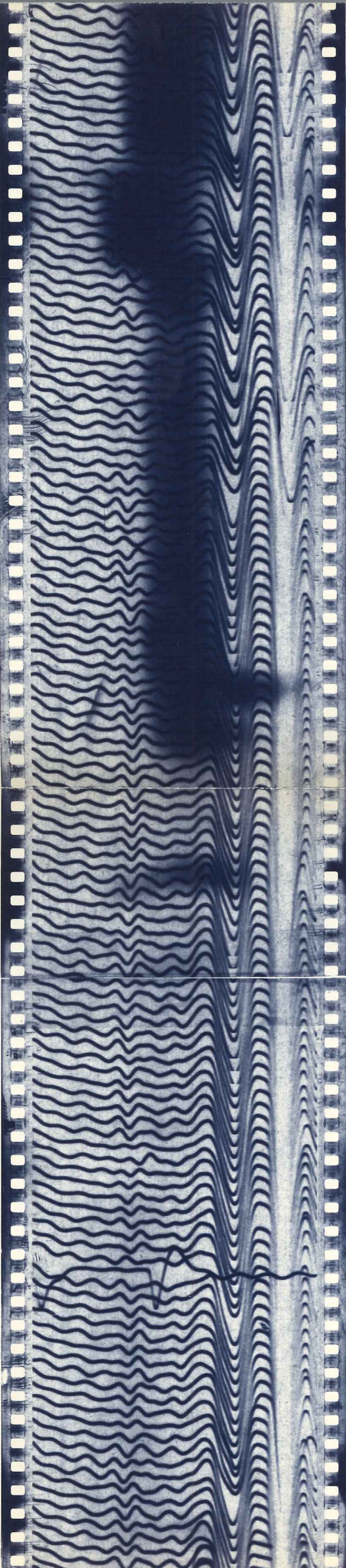




4000

4100

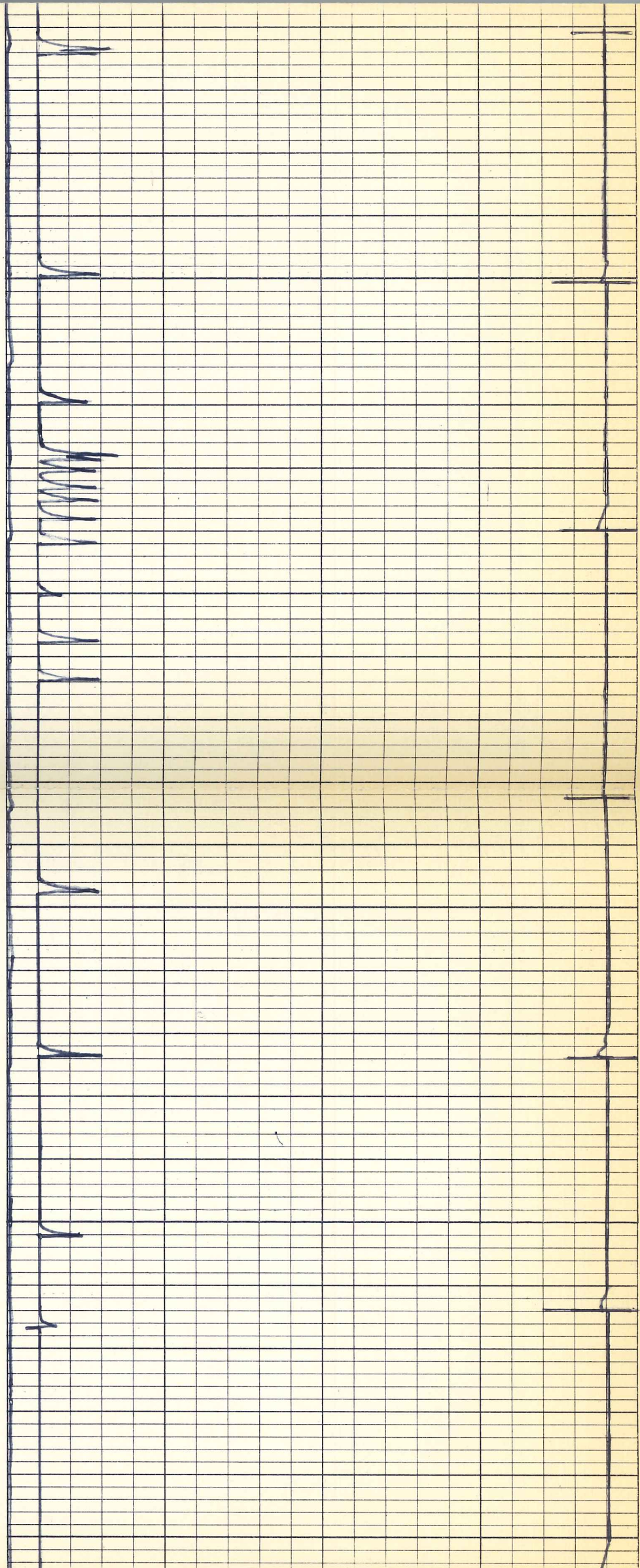


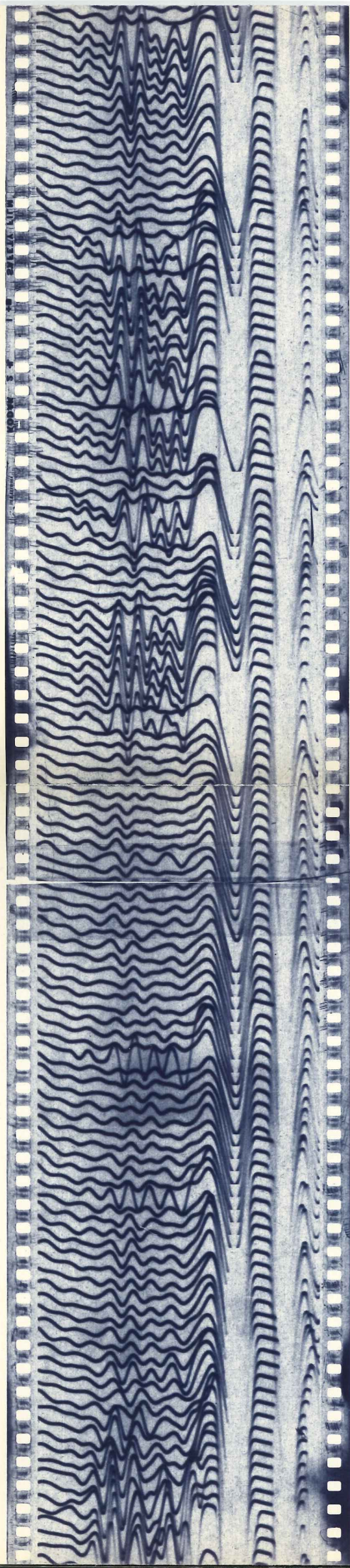


4200

4300

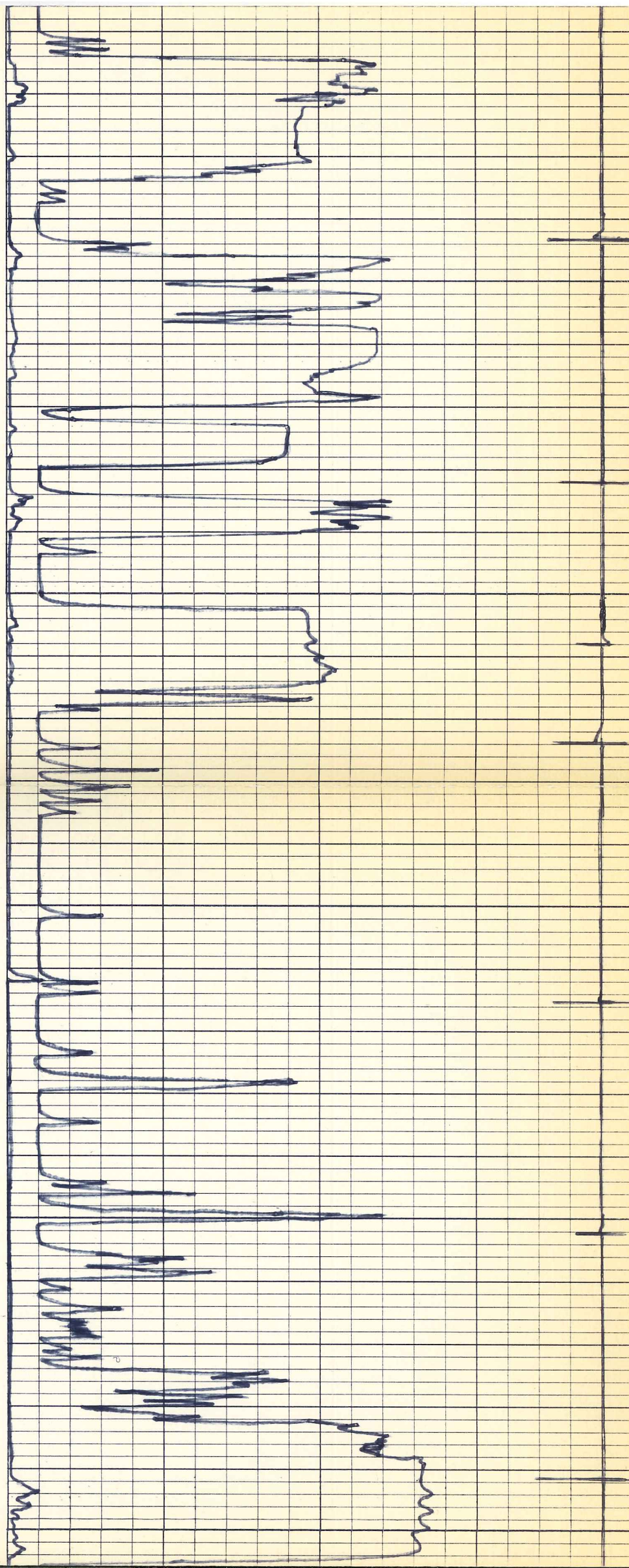
4400

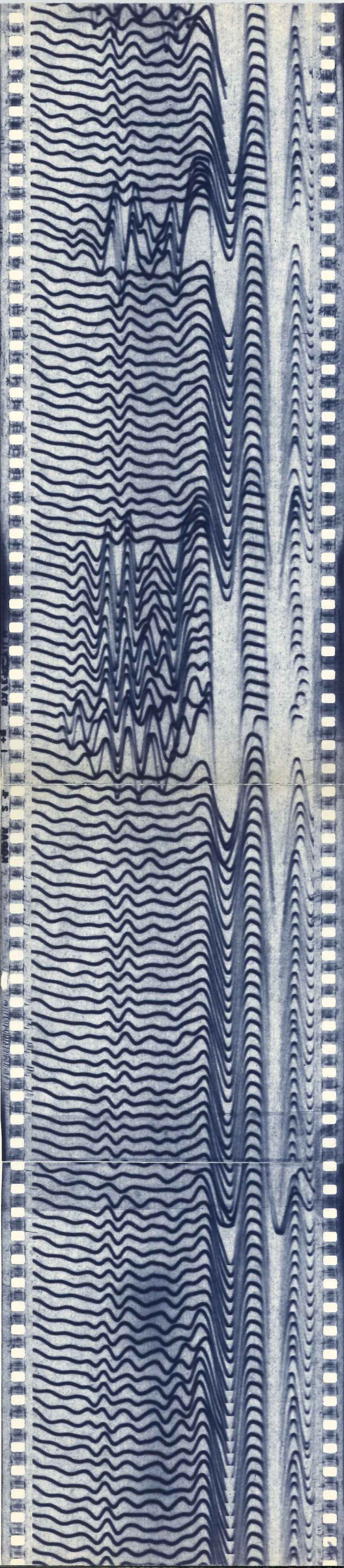




4500

4600

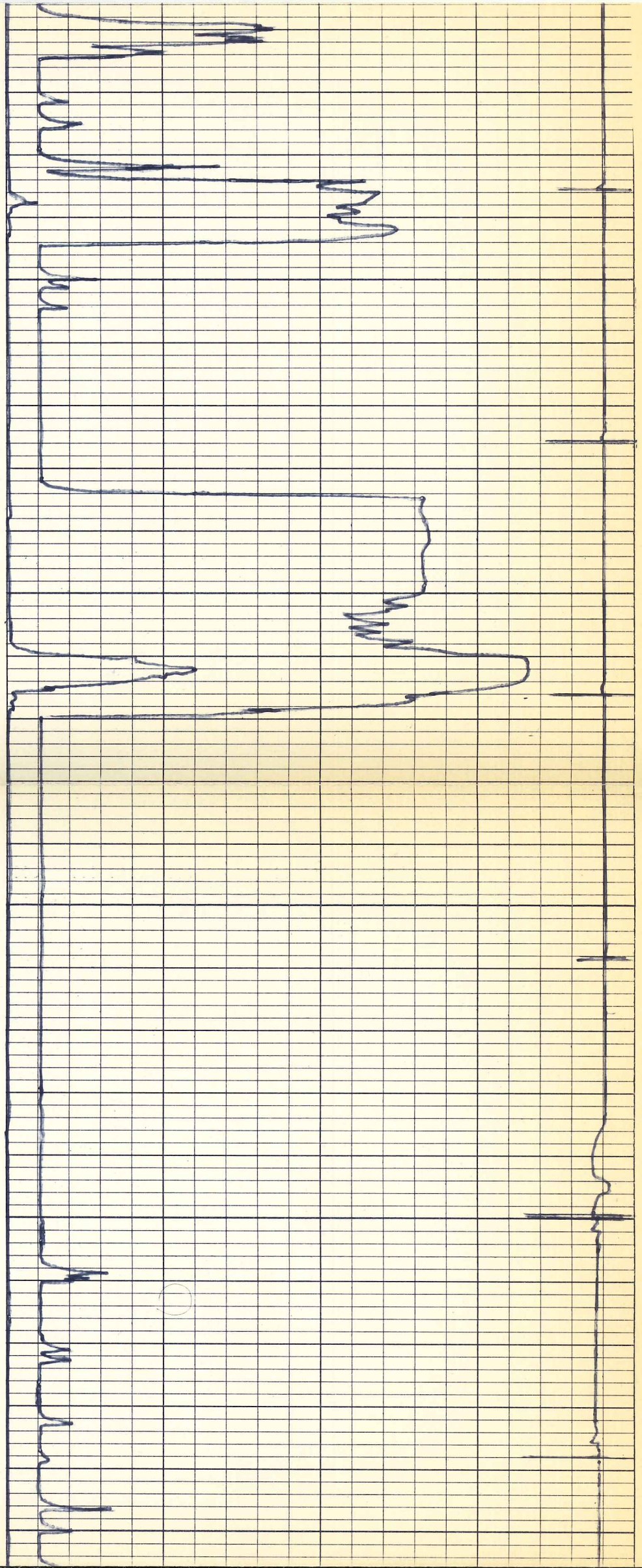


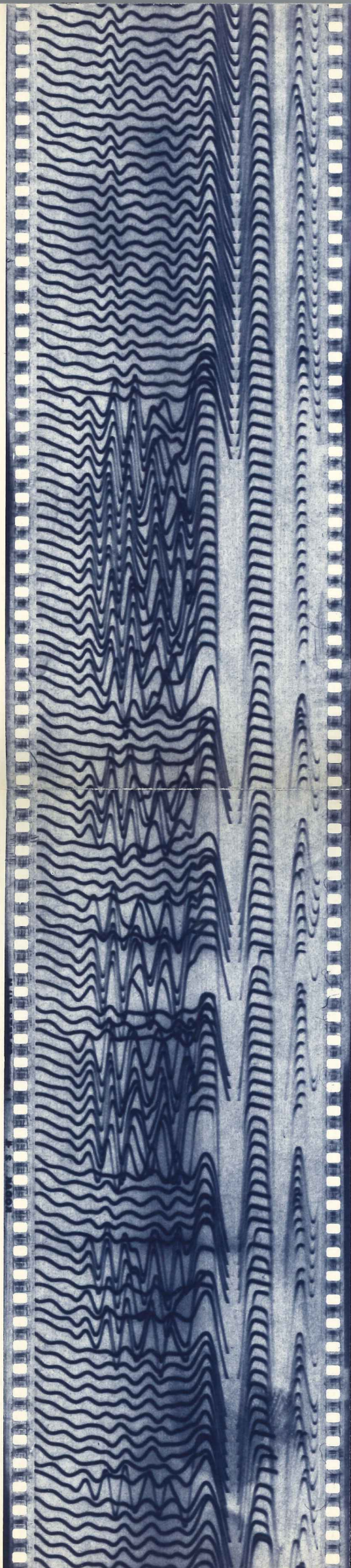


4700

4800

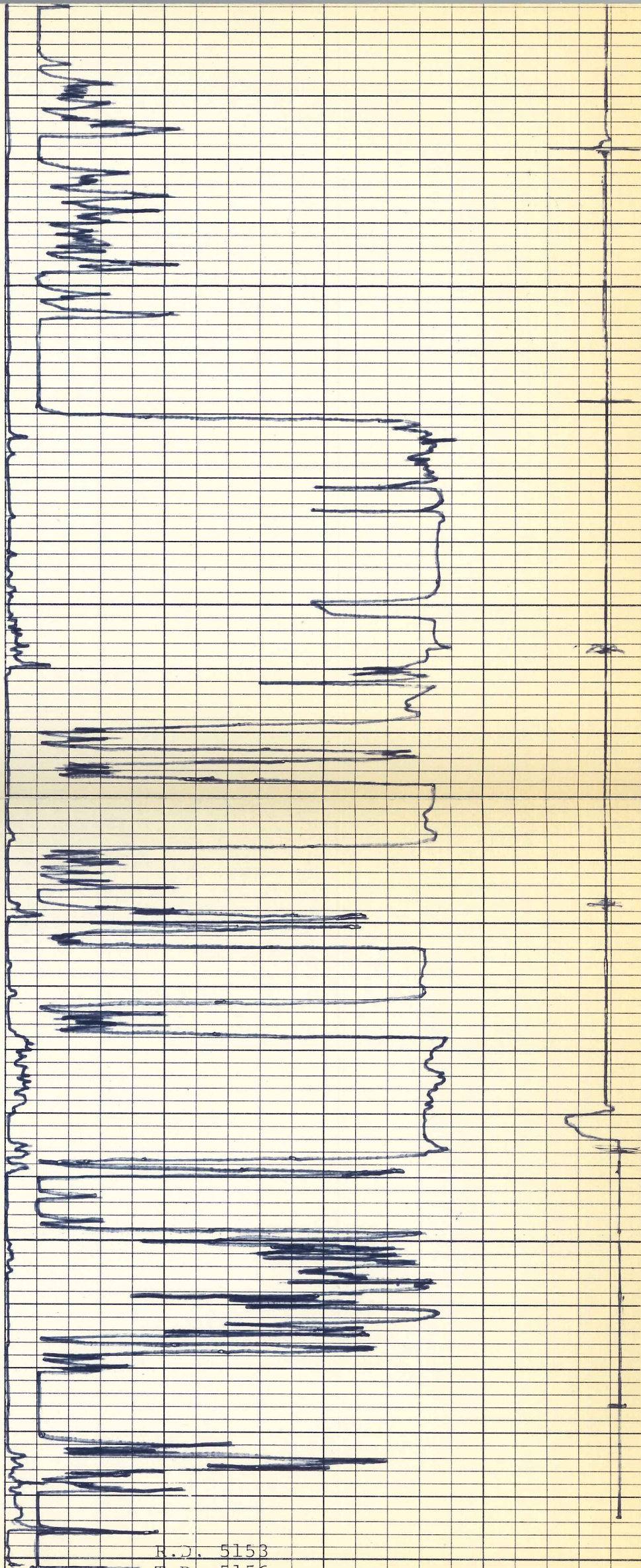
4900



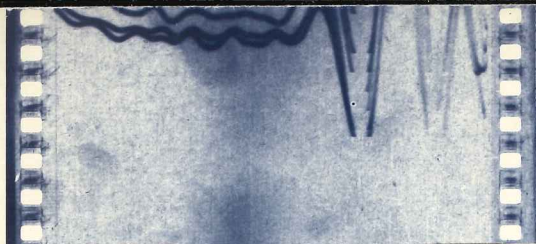


5000

5100



R.D. 5153
T.D. 5156

[illegible]