



Digital Cement Bond Log Gamma Ray CCL

Company	KERR MCGEE OIL AND GAS	Company	KERR MCGEE OIL AND GAS
Well	ODENBAUGH CULL UT 1	Well	ODENBAUGH CULL UT 1
Field	WATTENBERG	Field	WATTENBERG
County	WELD	County	WELD
State	COLORADO	State	COLORADO
Location:		API # : 05-123-07825	Other Services
LAT : 40.23500 LONG:-104.84530 SW/SW			
Permanent Datum	GL	Elevation	4772'
Log Measured From	KB 10'		
Drilling Measured From	KB		
SEC 12 TWP 3N RGE 67W			
Date	9-22-2015		
Run Number	ONE		
Depth Driller	7963'		
Depth Logger	146'		
Bottom Logged Interval	138'		
Top Log Interval	SURFACE		
Open Hole Size	4.5		
Type Fluid	WATER		
Density / Viscosity	1.0		
Max. Recorded Temp.	58 DEG F		
Estimated Cement Top	34'		
Time Well Ready	N/A		
Time Logger on Bottom	N/A		
Equipment Number	3812		
Location	GREELEY		
Recorded By	N.POLLOCK		
Witnessed By	RIGO C.		
Borehole Record			
Run Number	Bit	From	To
ONE			
TWO			
Casing Record	Size	Wgt/Ft	Top
Surface String	8.63	24#	SURFACE
Prot. String			
Production String	4.5	11.6 #10.5#	SURFACE
Liner			

<<< Fold Here >>>

All interpretations are opinions based on inferences from electrical or other measurements and we cannot and do not guarantee the accuracy or correctness of any interpretation, and we shall not, except in the case of gross or willful negligence on our part, be liable or responsible for any loss, costs, damages, or expenses incurred or sustained by anyone resulting from any interpretation made by any of our officers, agents or employees. These interpretations are also subject to our general terms and conditions set out in our current Price Schedule.

Comments

CORRELATED 2' UPHOLE TO CUTTER LOG RAN ON 8-25-2015

RAN C.B.L. TO VERIFY CEMENTN TOP.

THANK YOU FOR USING WARRIOR ENERGY SERVICES!

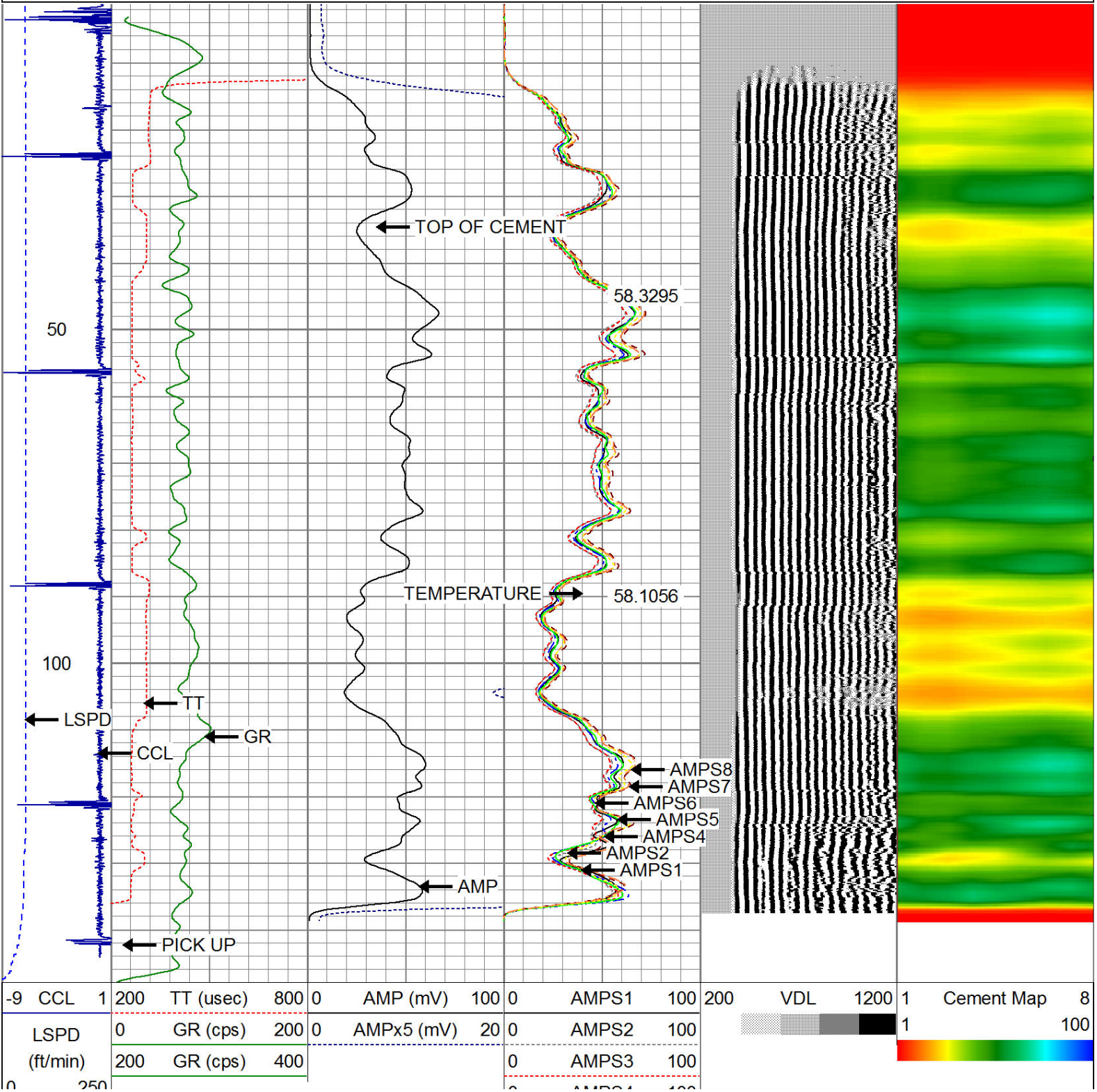
Sensor	Offset (ft)	Schematic	Description	Len (ft)	OD (in)	Wt (lb)
CENT	19.08					

Tool Joint	Tool Joint Length (ft)	Tool Joint Weight (lb)	Tool Joint O.D. (in)	Tool Joint Description	Tool Joint Length (ft)	Tool Joint Weight (lb)	Tool Joint O.D. (in)	Tool Joint Description
HEADVOLT	16.25				PTS275	2.83	2.75	
RBT	16.25							
IntTemp	14.83							
WVFS3FT	11.58				RBT-Probe (Base)	8.92	2.75	90.00
WVFCAL	11.58				Probe Radii Bond Tool with Digital Telemetry			
WVFS1	11.58							
WVFS2	11.58							
WVFS3	11.58							
WVFS4	11.58							
WVFS5	11.58							
WVFS6	11.58							
WVFS7	11.58							
WVFS8	11.58							
WVF5FT	10.58							
CNLSC	6.00				CNT-Probe_B (275)	3.00	2.75	40.00
CNSSC	5.17				6 bow centralizer			
GR	4.33							
CCL	3.64							
					GR-Probe (275)	4.33	2.75	30.00
					Probe 2.75"			
GR	0.90							

Dataset:
Total Length:
Total Weight:
O.D.

odenbaugh cull ut 1.db: field/well/run1/pass4
19.08 ft
160.00 lb
2.75 in

Dataset Creation: Tue Sep 22 07:42:08 2015 by Log 7.0 B1																															
Charted by: Depth in Feet scaled 1:240																															
-9	CCL	1	200	TT (usec)	800	0	AMP (mV)	100	0	AMPS1	100	200	VDL	1200	1	Cement Map	8														
LSPD (ft/min)	0		0	GR (cps)	200	0	AMPx5 (mV)	20	0	AMPS2	100					1100															
	200		200	GR (cps)	400			0	AMPS3	100																					
	0		0					0	AMPS4	100																					
		250							0	AMPS5	100																				
									0	AMPS6	100																				
									0	AMPS7	100																				
									0	AMPS8	100																				
										IntTemp																					
										(degF)																					



0 230

0	AMPS4	100
0	AMPS5	100
0	AMPS6	100
0	AMPS7	100
0	AMPS8	100

IntTemp
(degF)



WARRIOR
ENERGY SERVICES

CompanyKERR MCGEE OIL AND GAS
Well ODENBAUGH CULL UT 1
Field WATTENBERG
County WELD
State COLORADO