



Lat40°, Inc. 6250 W. 10th St, Unit 2 Greeley, CO 970-515-5294

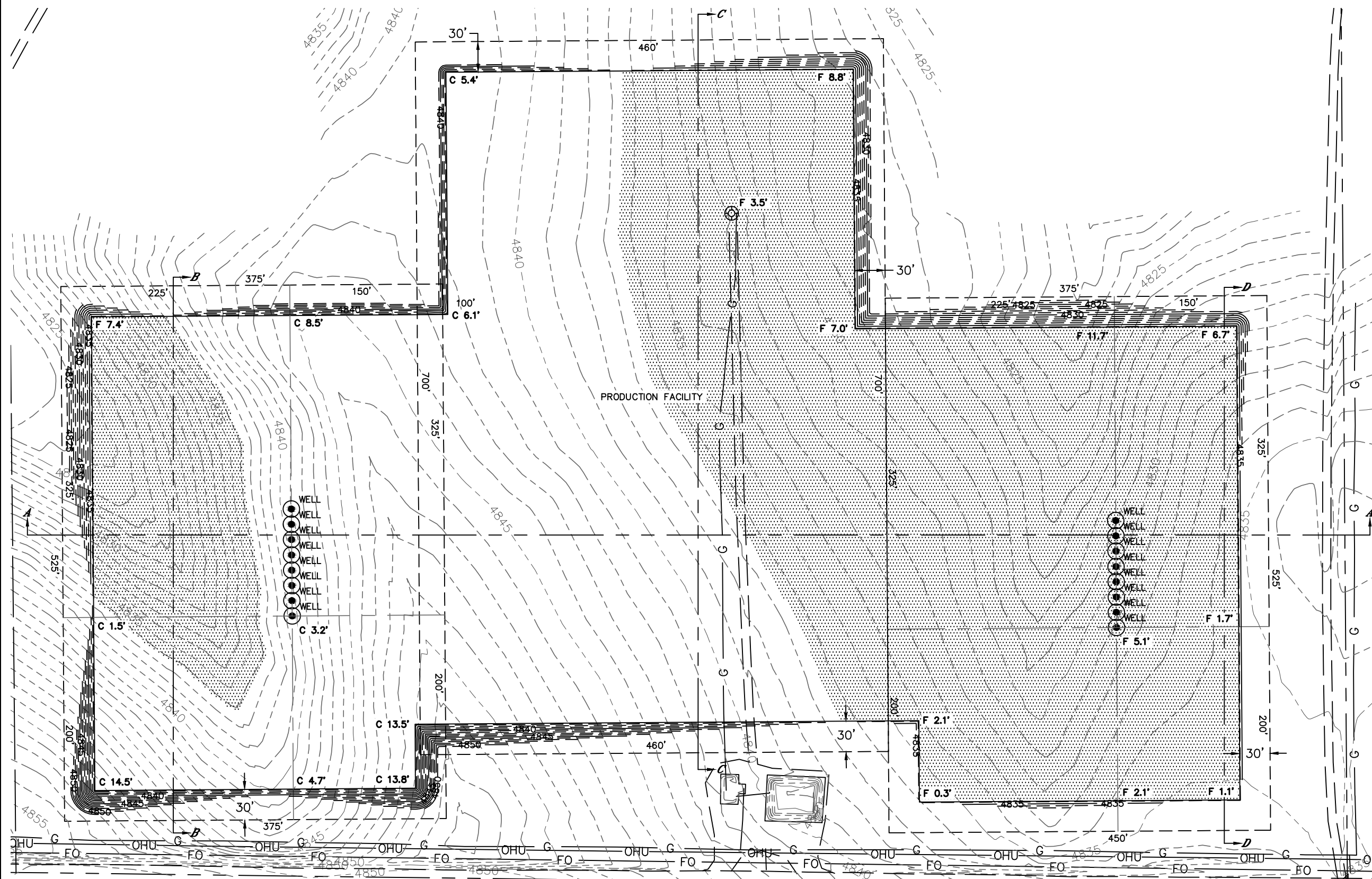
CUT FILL DIAGRAM

SPAUR 4N67W10LQ PAD

SECTION: 10
TOWNSHIP: 4N
RANGE: 67W
6TH P.M.
WELD COUNTY, CO

OPERATOR: PDC ENERGY
LOCATION: 255' FSL, 1583' FWL
EXISTING ELEV= 4839.5'
PROPOSED ELEV= 4836.3'
DISTURBANCE= 14.5 ACRES

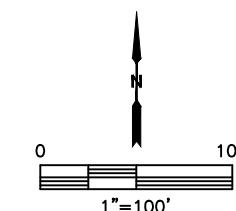
ESTIMATED EARTHWORK:
TOPSOIL= 23,312 CY
CUT= 61,730 CY
FILL= 61,720 CY
EXCESS= 10 CY



- NOTE:
- 1) Ground elevations are based on an observed GPS elevation (NAVD 1988 DATUM).
 - 2) No allowance has been made for soil expansion or compaction.
 - 3) Proposed elevation does not account for top soil removal.
 - 4) Top soil volume assumes 12" depth across entire location.
 - 5) Fill slopes 2:1
 - 6) Cut slopes 1.5:1

LEGEND

EX. CONTOUR	---
PRO. CONTOUR	---
FILL AREA	Stippled pattern



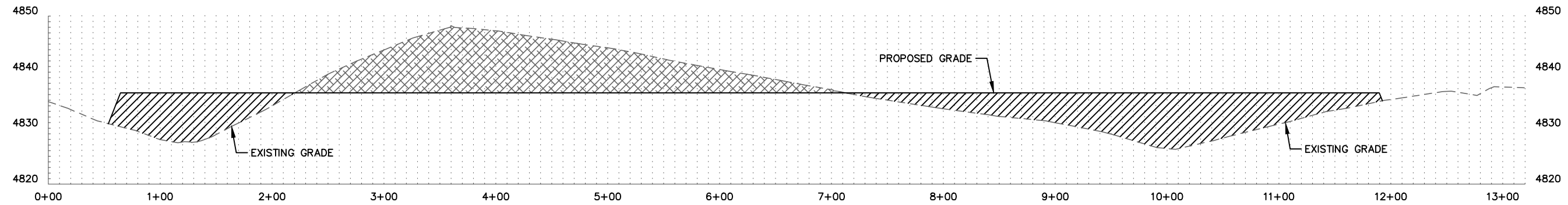


Lat40°, Inc. 6250 W. 10th St, Unit 2 Greeley, CO 970-515-5294

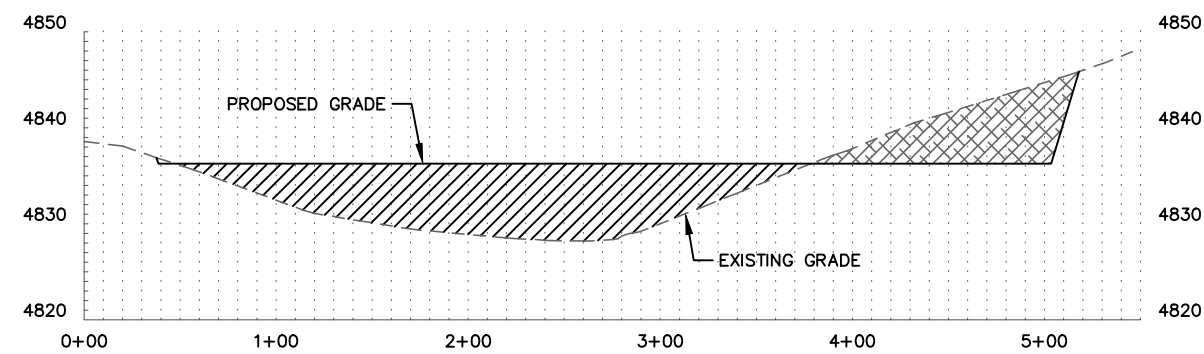
CROSS SECTION DIAGRAM

SPAUR 4N67W10LQ PAD

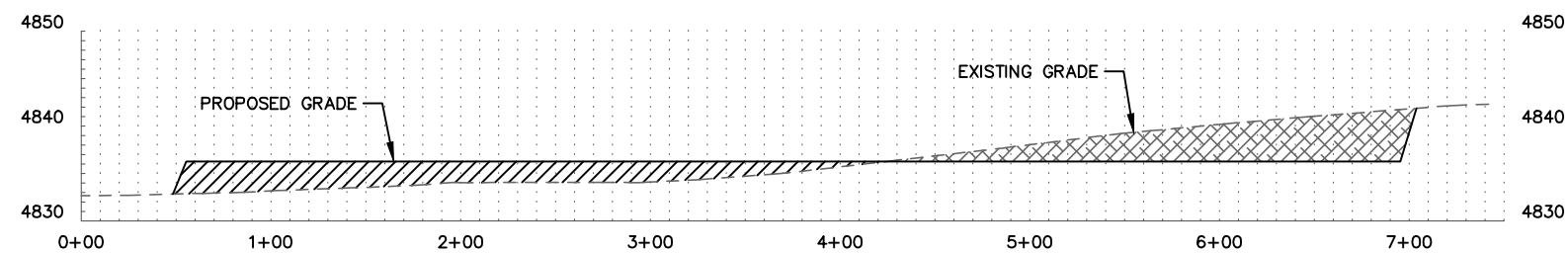
SECTION: 10
TOWNSHIP: 4N
RANGE: 67W
6TH P.M.
WELD COUNTY, CO



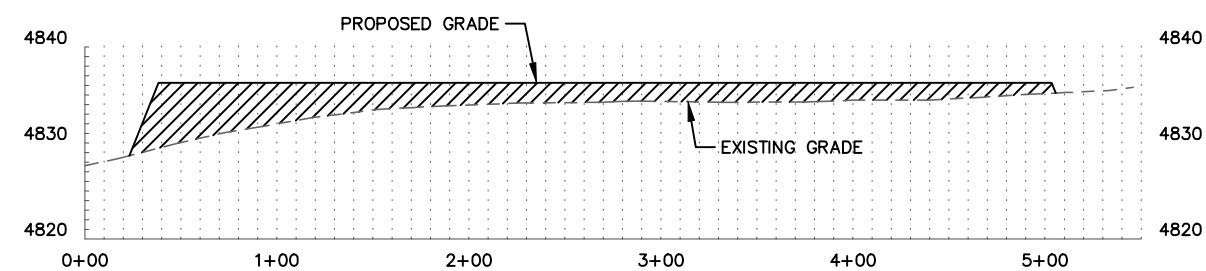
A-A



B-B



C-C



D-D

HORIZONTAL SCALE: 1"=100', VERTICAL SCALE: 1"=20'