

T10N, R58W, 6th P.M.

WHITING OIL & GAS CORP.

Well location, RAZOR #12H-0116B (SURFACE LOCATION), located as shown in the SE 1/4 NE 1/4 of Section 12, T10N, R58W, 6th P.M., Weld County, Colorado.

BASIS OF ELEVATION

SPOT ELEVATION LOCATED AT THE NORTHEAST CORNER OF SECTION 15, T9N, R58W, 6th P.M. TAKEN FROM THE GATEHOOK SPRING, QUADRANGLE, COLORADO, WELD COUNTY, 7.5 MINUTE QUAD (TOPOGRAPHIC MAP) PUBLISHED BY THE UNITED STATES DEPARTMENT OF THE INTERIOR, GEOLOGICAL SURVEY. SAID ELEVATION IS MARKED AS BEING 4679 FEET.

BASIS OF BEARINGS

BASIS OF BEARINGS IS A G.P.S. OBSERVATION.

2012 Alum. Cap,
#28285, 0.3' High
Lat: 40.860647°
Long: 103.823292°

Target Bottom Hole

2006 Alum. Cap, #24949,
0.6' Below Ground
Lat: 40.860678°
Long: 103.804117°

R
58
W
R
57
W

N89°51'36"E - 2652.47' (Meas.)

N89°51'36"E - 2652.47' (Meas.)

2012 Alum. Cap,
#28285, 0.3' High
Lat: 40.860664°
Long: 103.813706°

N00°28'29"W - 2650.08' (Meas.)

N00°28'29"W - 2650.08' (Meas.)

2012 Alum. Cap,
#28285, 0.3' High
Lat: 40.853375°
Long: 103.823214°

RAZOR #12H-0116B

Elev. Graded Ground = 4947'

12

Top of Production

NOTE:
THE PROPOSED TARGET BOTTOM HOLE FOR
THIS WELL IS LOCATED IN LOT 1 OF SECTION
1, T10N, R58W, 6th P.M., AT 600' FNL 165'
FEL. IT BEARS N00°01'29"W 7269.23' FROM
THE PROPOSED TOP OF PRODUCTION.

2010 Alum. Cap,
Flush With Ground,
T-Post, Large Stones
Lat: 40.846106°
Long: 103.823136°

2012 Alum. Cap,
#28285, 0.3' High
Lat: 40.846125°
Long: 103.813489°

1917 Brass Cap,
Fence
Lat: 40.846147°
Long: 103.803839°

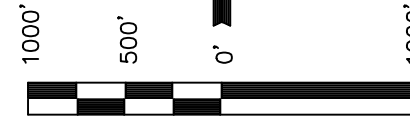
N00°01'29"W
7269.23'

N00°31'10"W - 2647.68' (Meas.)

2006 Alum. Cap,
#24949,
0.6' Below Ground
Lat: 40.853414°
Long: 103.804036°



LINE TABLE		
LINE	DIRECTION	LENGTH
L1	S78°29'57"E	482.59'



SCALE

CERTIFICATION

THIS IS TO CERTIFY THAT THE ABOVE PLAT WAS PREPARED FROM
FIELD NOTES OF ACTUAL SURVEYS MADE BY ME OR UNDER MY
SUPERVISION AND THAT THE SAME ARE TRUE AND CORRECT TO THE
BEST OF MY KNOWLEDGE AND BELIEF.

REGISTERED LAND SURVEYOR
REGISTRATION NO. 28285
STATE OF COLORADO
10-19-15

REVISED: 10-19-15 K.B.
REVISED: 07-12-13

UINTAH ENGINEERING & LAND SURVEYING
85 SOUTH 200 EAST - VERNAL, UTAH 84078
(435) 789-1017

LEGEND:

- └─┘ = 90° SYMBOL
- = PROPOSED WELLHEAD.
- ◆ = TOP OF PRODUCTION.
- = TARGET BOTTOM HOLE.
- ▲ = SECTION CORNERS LOCATED.

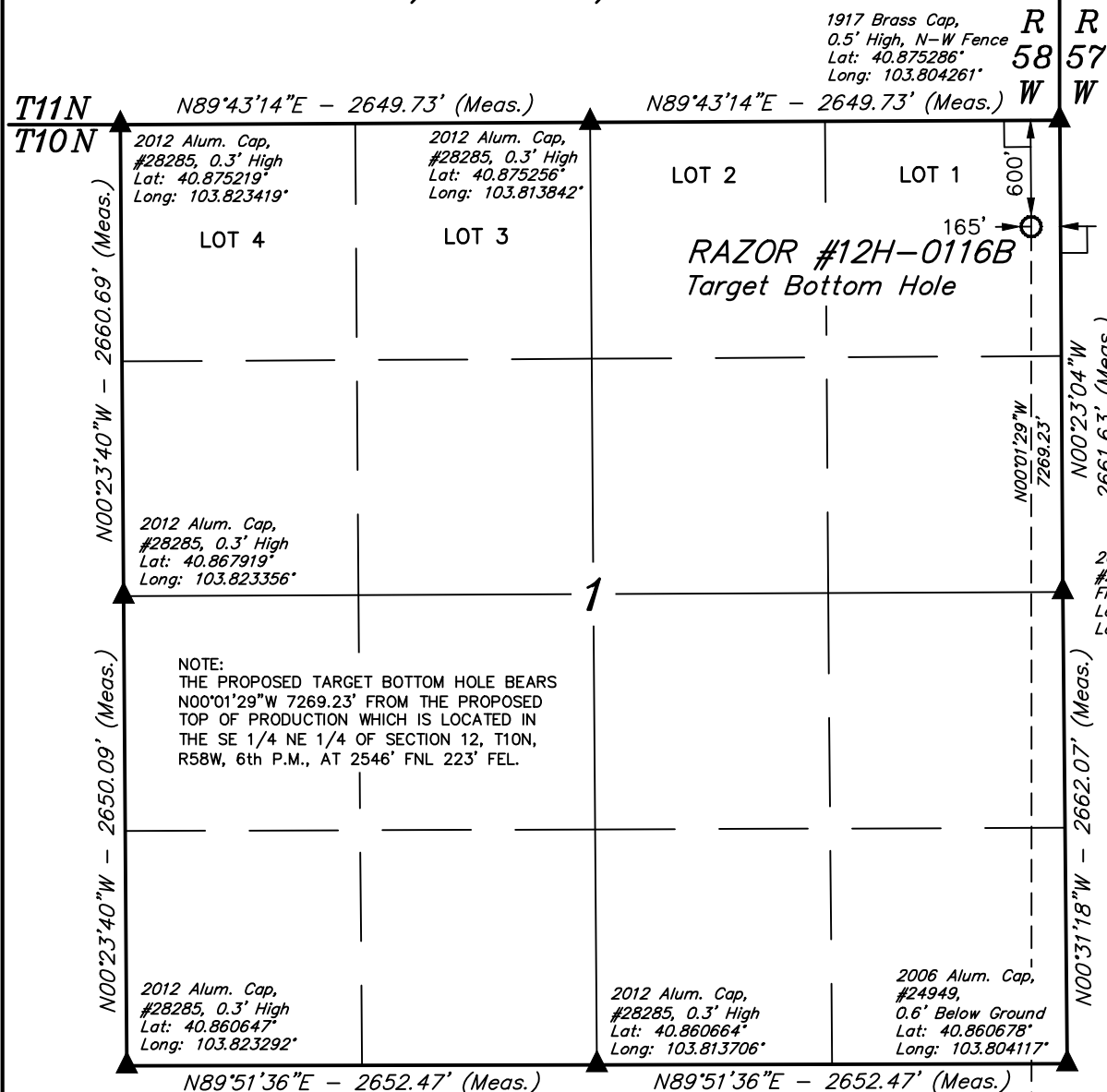
PDOP = 1.3

NAD 83 (TOP OF PRODUCTION)	NAD 83 (SURFACE LOCATION)
LATITUDE = 40°51'13.29" (40.853692)	LATITUDE = 40°51'14.24" (40.853956)
LONGITUDE = 103°48'17.44" (103.804844)	LONGITUDE = 103°48'23.59" (103.806553)
NAD 27 (TOP OF PRODUCTION)	NAD 27 (SURFACE LOCATION)
LATITUDE = 40°51'13.34" (40.853706)	LATITUDE = 40°51'14.29" (40.853969)
LONGITUDE = 103°48'15.63" (103.804342)	LONGITUDE = 103°48'21.79" (103.806053)

SCALE 1" = 1000'	DATE SURVEYED: 05-10-13	DATE DRAWN: 05-15-13
PARTY J.H. C.M. A.D.	REFERENCES G.L.O. PLAT	
WEATHER WARM	FILE WHITING OIL & GAS CORP.	

T10N, R58W, 6th P.M.

WHITING OIL & GAS CORP.



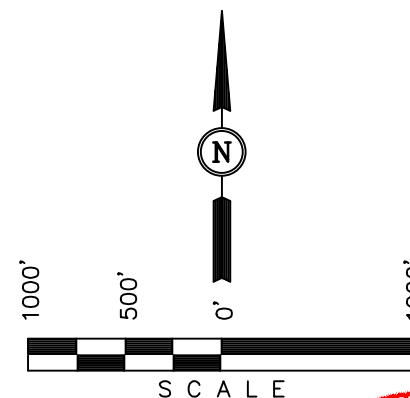
Well location, RAZOR #12H-0116B (TARGET BOTTOM HOLE), located as shown in LOT 1 of Section 1, T10N, R58W, 6th P.M., Weld County, Colorado.

BASIS OF ELEVATION

SPOT ELEVATION LOCATED AT THE NORTHEAST CORNER OF SECTION 15, T9N, R58W, 6th P.M. TAKEN FROM THE GATEHOOK SPRING, QUADRANGLE, COLORADO, WELD COUNTY, 7.5 MINUTE QUAD (TOPOGRAPHIC MAP) PUBLISHED BY THE UNITED STATES DEPARTMENT OF THE INTERIOR, GEOLOGICAL SURVEY. SAID ELEVATION IS MARKED AS BEING 4679 FEET.

BASIS OF BEARINGS

BASIS OF BEARINGS IS A G.P.S. OBSERVATION.



CERTIFICATION

THIS IS TO CERTIFY THAT THE ABOVE PLAT WAS PREPARED FROM FIELD NOTES OF ACTUAL SURVEYS MADE BY ME OR UNDER MY SUPERVISION AND THAT THE SAME ARE TRUE AND CORRECT TO THE BEST OF MY KNOWLEDGE AND BELIEF.

REGISTERED LAND SURVEYOR
REGISTRATION NO. 28285
STATE OF COLORADO

REVISED: 10-19-15 K.B.
REVISED: 07-12-13

UINTAH ENGINEERING & LAND SURVEYING
85 SOUTH 200 EAST - VERNAL, UTAH 84078
(435) 789-1017

LEGEND:

- └─┘ = 90° SYMBOL
- = PROPOSED WELLHEAD.
- ◆ = TOP OF PRODUCTION.
- = TARGET BOTTOM HOLE.
- ▲ = SECTION CORNERS LOCATED.

Top of Production ◆

NAD 83 (TARGET BOTTOM HOLE)	
LATITUDE	= 40°52'25.10" (40.873639)
LONGITUDE	= 103°48'17.44" (103.804844)
NAD 27 (TARGET BOTTOM HOLE)	
LATITUDE	= 40°52'25.15" (40.873653)
LONGITUDE	= 103°48'15.64" (103.804344)

SCALE 1" = 1000'	DATE SURVEYED: 05-10-13	DATE DRAWN: 05-15-13
PARTY J.H. C.M. A.D.	REFERENCES G.L.O. PLAT	
WEATHER WARM	FILE WHITING OIL & GAS CORP.	