



FILE NO: US093867		COMPANY WPX ENERGY ROCKY MTN LLC	
API NO: 0504522400000		WELL FEDERAL PA 332-27	
Ver. 3.87 S27 T6S R95W PAD: DOE 2-W-27 RIG: NABORS 576		FIELD PARACHUTE	
LOCATION: SHL: 2360' FNL: 648' FEL BHL: 2170' FNL: 1594' FEL		COUNTY GARFIELD	
SEC 27 TWP 6S RGE 95W		STATE CO	
OTHER SERVICES RAL CBL			
PERMANENT DATUM LOG MEASURED FROM DRILL. MEAS. FROM		ELEVATIONS: GL 5856 FT KB 5882 FT DF GL 5856 FT	
DATE 09-Jan-2015			
RUN TRIP 1 1			
SERVICE ORDER CH093867			
DEPTH DRILLER 8488 FT			
DEPTH LOGGER 8412 FT			
BOTTOM LOGGED INTERVAL 8402 FT			
TOP LOGGED INTERVAL 4600 FT			
TIME STARTED 11:30			
TIME FINISHED 18:00			
OPERATOR RIG TIME 6.5 HR			
TYPE OF FLUID IN HOLE WATER			
FLUID DENSITY NA			
FLUID SALINITY NA			
FLUID LEVEL 80 FT			
LOGGED CEMENT TOP NA			
WELLHEAD PRESSURE 0 PSI			
MAXIMUM HOLE DEVIATION NA			
NOMINAL LOGGING SPEED 15 FMN			
MAX. RECORDED TEMP. 220 DEGF			
REFERENCE LOG NA			
REFERENCE LOG DATE NA			
EQUIP. NO. LOCATION 6670 GRAND JCT			
RECORDED BY D SMITH			
WITNESSED BY J DUCY			

IN MAKING INTERPRETATIONS OF LOGS OUR EMPLOYEES WILL GIVE THE CUSTOMER THE BENEFIT OF THEIR BEST JUDGEMENT. BUT SINCE ALL INTERPRETATIONS ARE OPINIONS BASED ON INFERENCES FROM ELECTRICAL OR OTHER MEASUREMENTS, WE CANNOT, AND WE DO NOT GUARANTEE THE ACCURACY OR CORRECTNESS OF ANY INTERPRETATION. WE SHALL NOT BE LIABLE OR RESPONSIBLE FOR ANY LOSS, COST, DAMAGES, OR EXPENSES WHATSOEVER INCURRED OR SUSTAINED BY THE CUSTOMER RESULTING FROM ANY INTERPRETATION MADE BY ANY OF OUR EMPLOYEES.

BOREHOLE RECORD		
BIT SIZE	FROM	TO
13.5 IN	0 FT	2777 FT
8.75 IN	2777 FT	8488 FT

CASING RECORD				
SIZE	WEIGHT	GRADE	FROM	TO
9.625 IN	36 LB/F		0 FT	2777 FT
4.5 IN	11.6 LB/F	P-110	0 FT	8488 FT

REMARKS

RUN 1 TRIP 1: All data on this log is shifted and depth matched using the Gamma Ray curve to the Baker Hughes bond log dated 09/JAN/2015 at the client's request.

The depth matching process creates potential for collar lengths to vary from those recorded on other cased hole wireline units without a Gamma Ray reference.

Logged in PNC-3D mode.

The amount of linear shift is -2.0 FT

Logged with zero PSI at wellhead.

BHT = 220 DEG

THANK YOU FOR CHOOSING BAKER HUGHES WIRELINE SERVICES

CREW: BAUGHMAN/HOLLER/SMITH

EQUIPMENT DATA

RUN	TRIP	TOOL	SERIES NO.	SERIAL NO.	POSITION
1	1	TEMP	8255XA	11774586	FREE
1	1	RPM	8281FA	10191667	FREE
1	1	RPM	8283PA	10203151	FREE
1	1	RPM	8281EA	10191667	FREE
1	1	GR	8262XA	10317216	FREE
1	1	TEL/CCL	8248EA	10387150	FREE

MAIN LOG 5"/100FT SCALE

ECLIPS 6.2i ECLIPS General Release Rel 6.2i Wed Jun 12 12:21:40 CDT 2013

Updates: 1 Patches: 4

Plotted: Sat Jan 10 09:04:37 2015

PARAMETER AND FILTER SUMMARY REPORT

FILE: /dat1a/CH093867/n353h04.prm
LOGGING MODE: DEPTH DIRECTION: UP
TOP DEPTH: 4574.000 ft BOTTOM DEPTH: 8436.080 ft

SYMMETRIC FILTER

MEASUREMENT TYPE	PARAMETER	VALUE	UNITS	INTERVAL (ft)
GR	FILTER ()	medium (1)		TOP BOTTOM

RPM PROCESSING

MEASUREMENT TYPE	PARAMETER	VALUE	UNITS	INTERVAL (ft)
PNC Parameters	BOREHOLE CONTENTS	FLUID		TOP BOTTOM
	OPEN/CASED HOLE	CASED HOLE		" "
	BOREHOLE SIZE	8.75	in	" "
	CASING SIZE	4.50	in	" "
	MATRIX	SANDSTONE		" "
	CORRECTION BUFFER	11		" "

CURVE DESCRIPTION REPORT

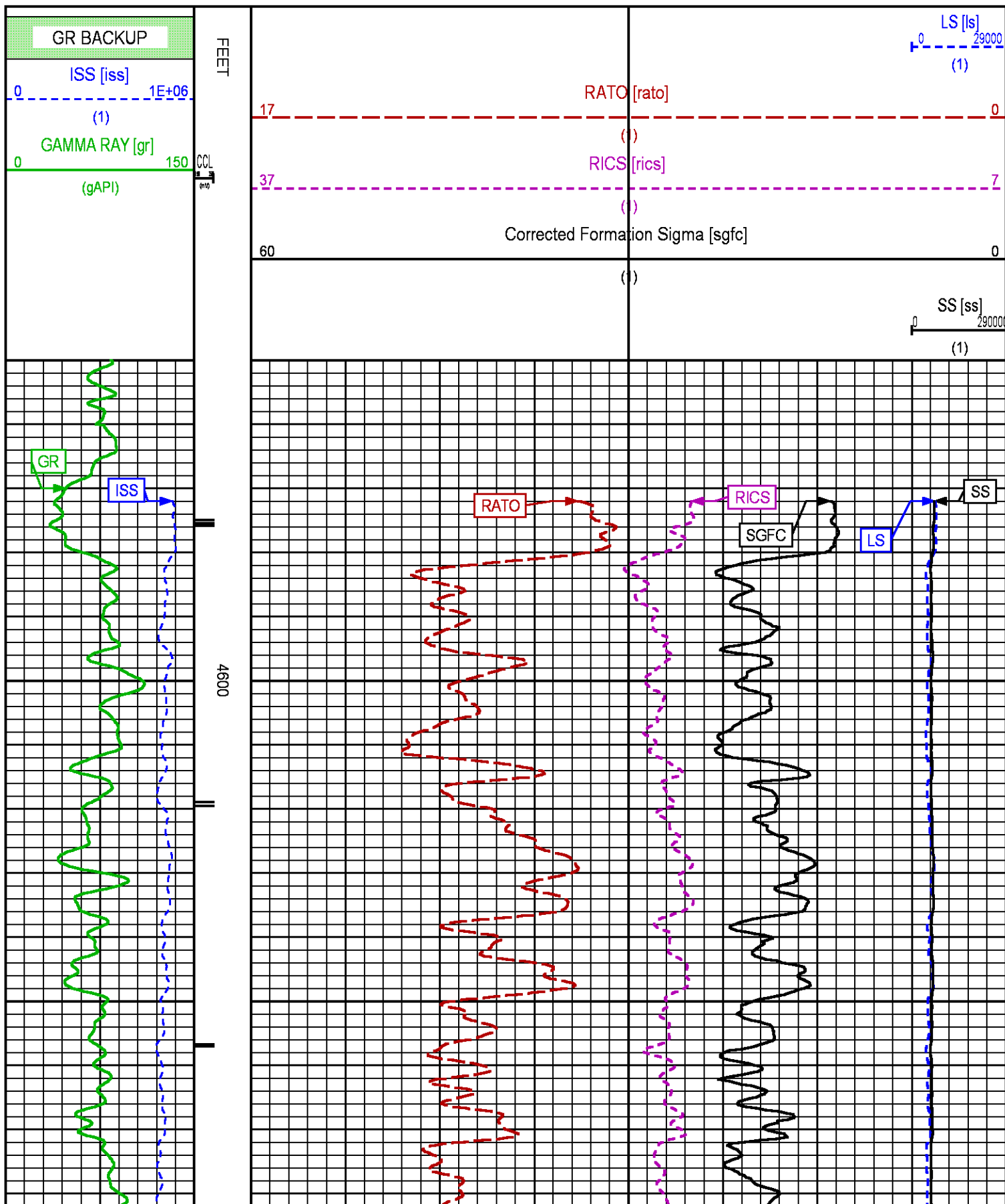
CURVE NAME	CREATION DATE	CURVE DESCRIPTION
F1:CCL	Jan 9 13:36:48 2015	CASING COLLAR LOCATOR
F1:GR	Jan 9 13:36:48 2015	GAMMA RAY
F1:ISS	Jan 9 13:36:48 2015	INELASTIC SHORT SPACE COUNT RATE
F1:LS	Jan 9 13:36:48 2015	LONG SPACE COUNT RATE
F1:RATO	Jan 9 13:36:48 2015	SHORT/LONG SPACE COUNT RATE RATIO
F1:RICS	Jan 9 13:36:48 2015	SHORT SPACE INELASTIC TO CAPTURE COUNT RATE RATIO (ISS/CSS)
F1:SGFC	Jan 9 13:36:48 2015	CORRECTED FORMATION SIGMA
F1:SS	Jan 9 13:36:48 2015	SHORT SPACE COUNT RATE

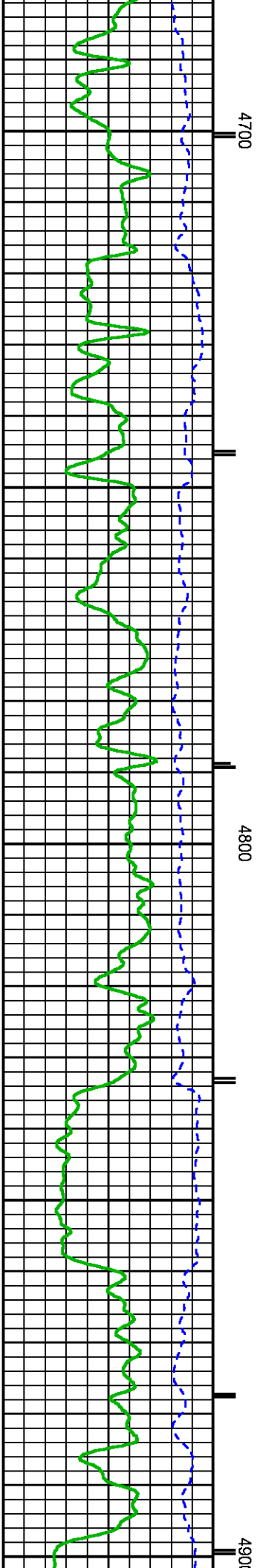
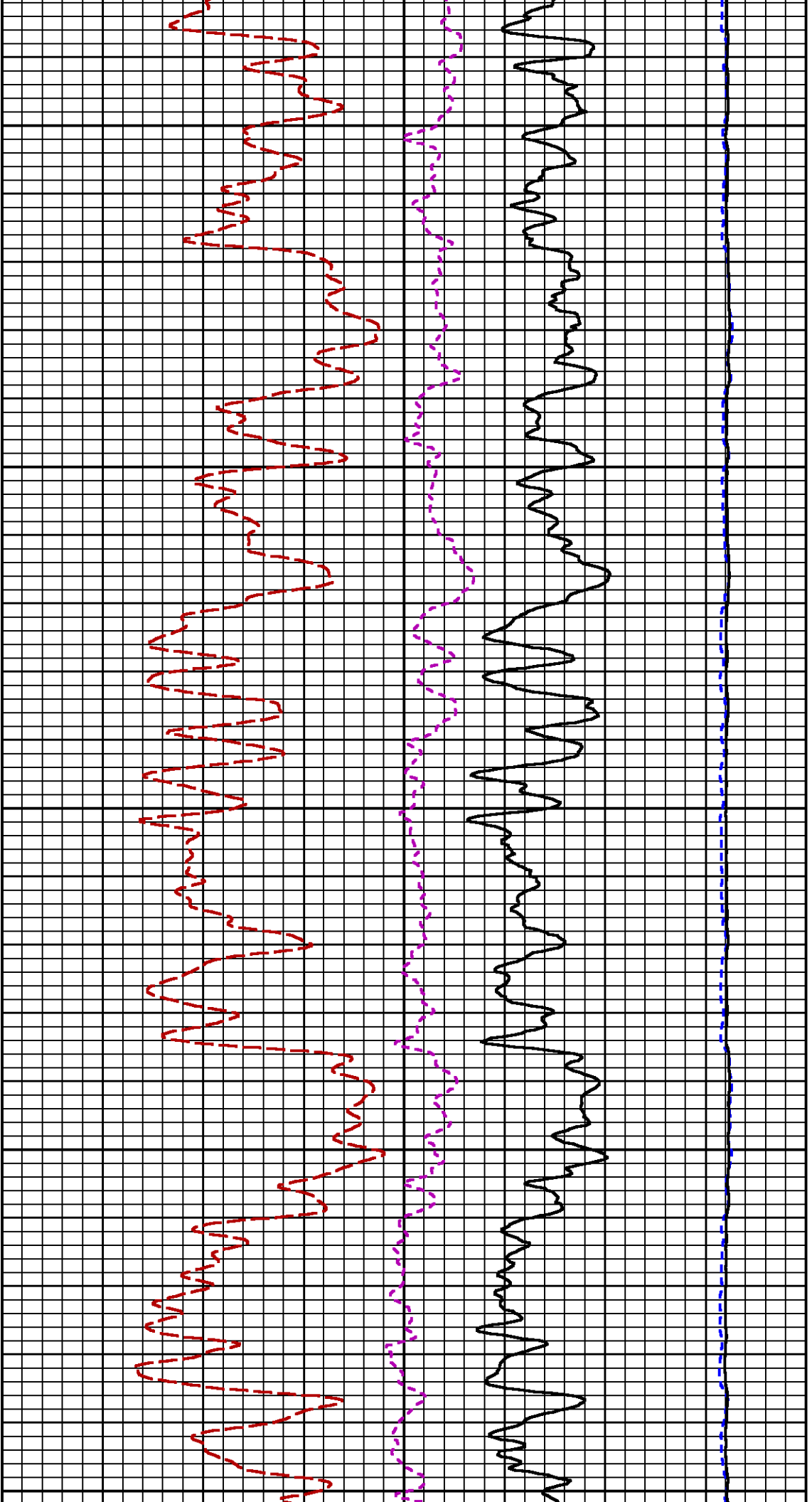
CURVE MEASURE POINT OFFSET

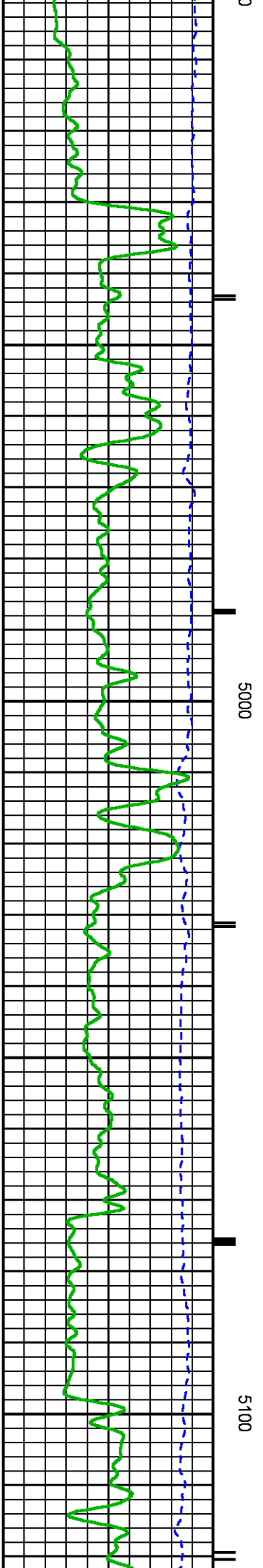
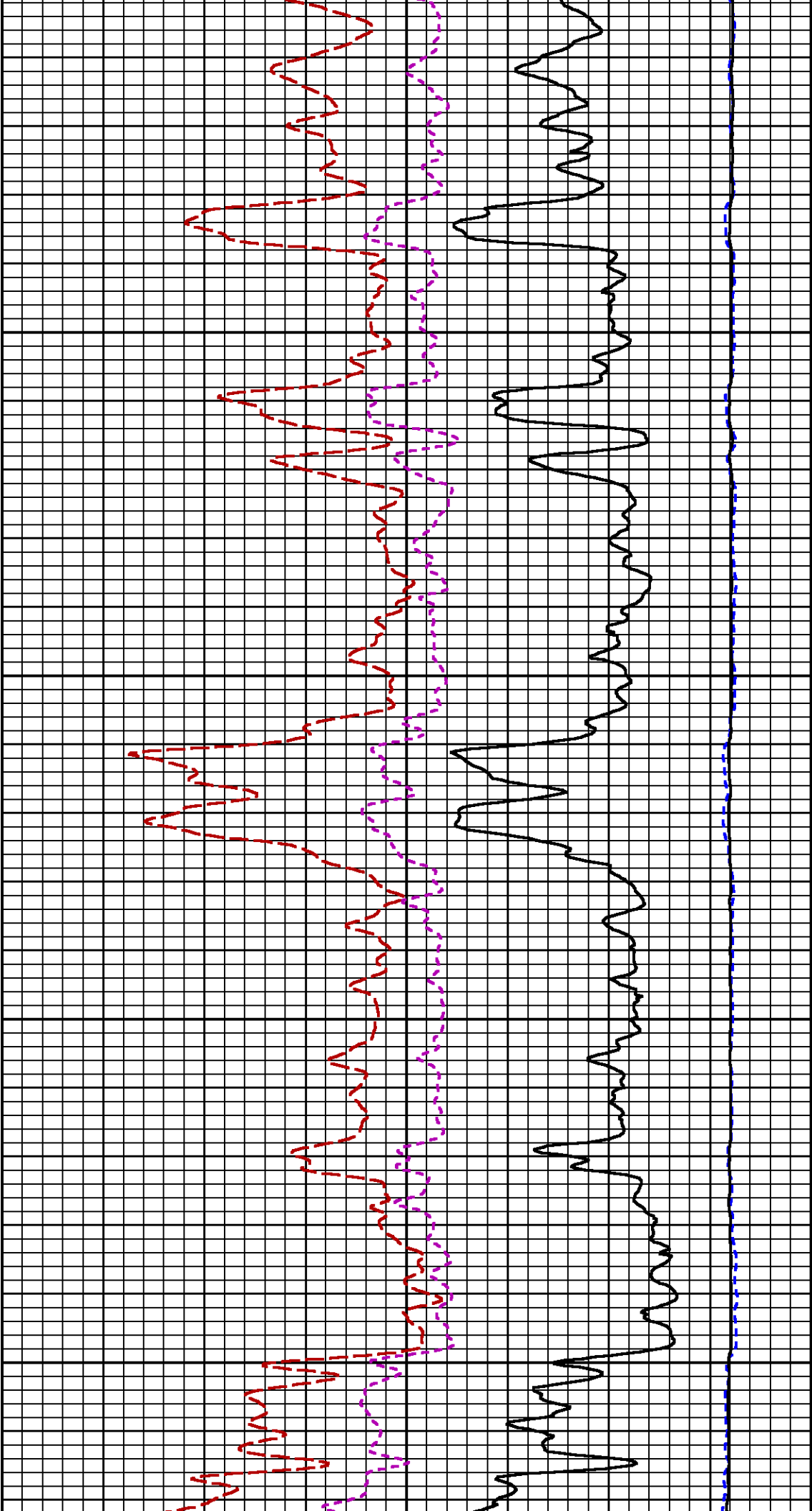
CURVE	OFFSET (ft)	CURVE	OFFSET (ft)	CURVE	OFFSET (ft)	CURVE	OFFSET (ft)
CCL	26.00	ISS	12.75	RATO	12.75	SGFC	12.75
GR	23.00	LS	12.75	RICS	12.75	SS	12.75

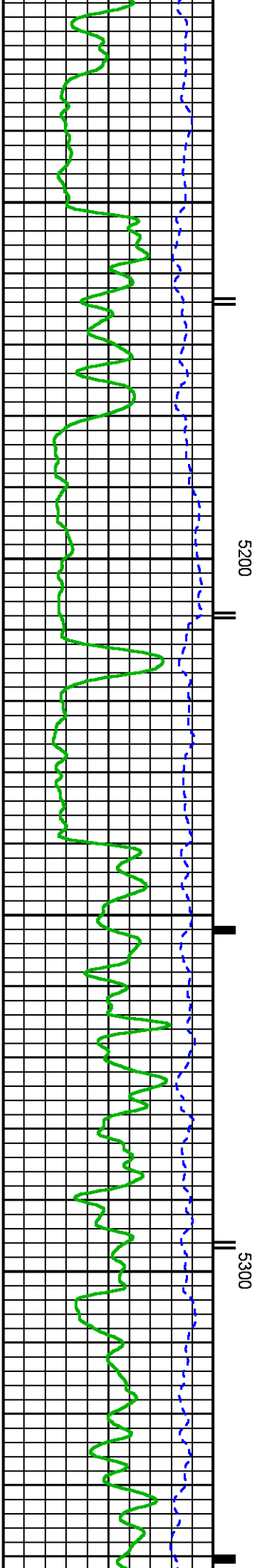
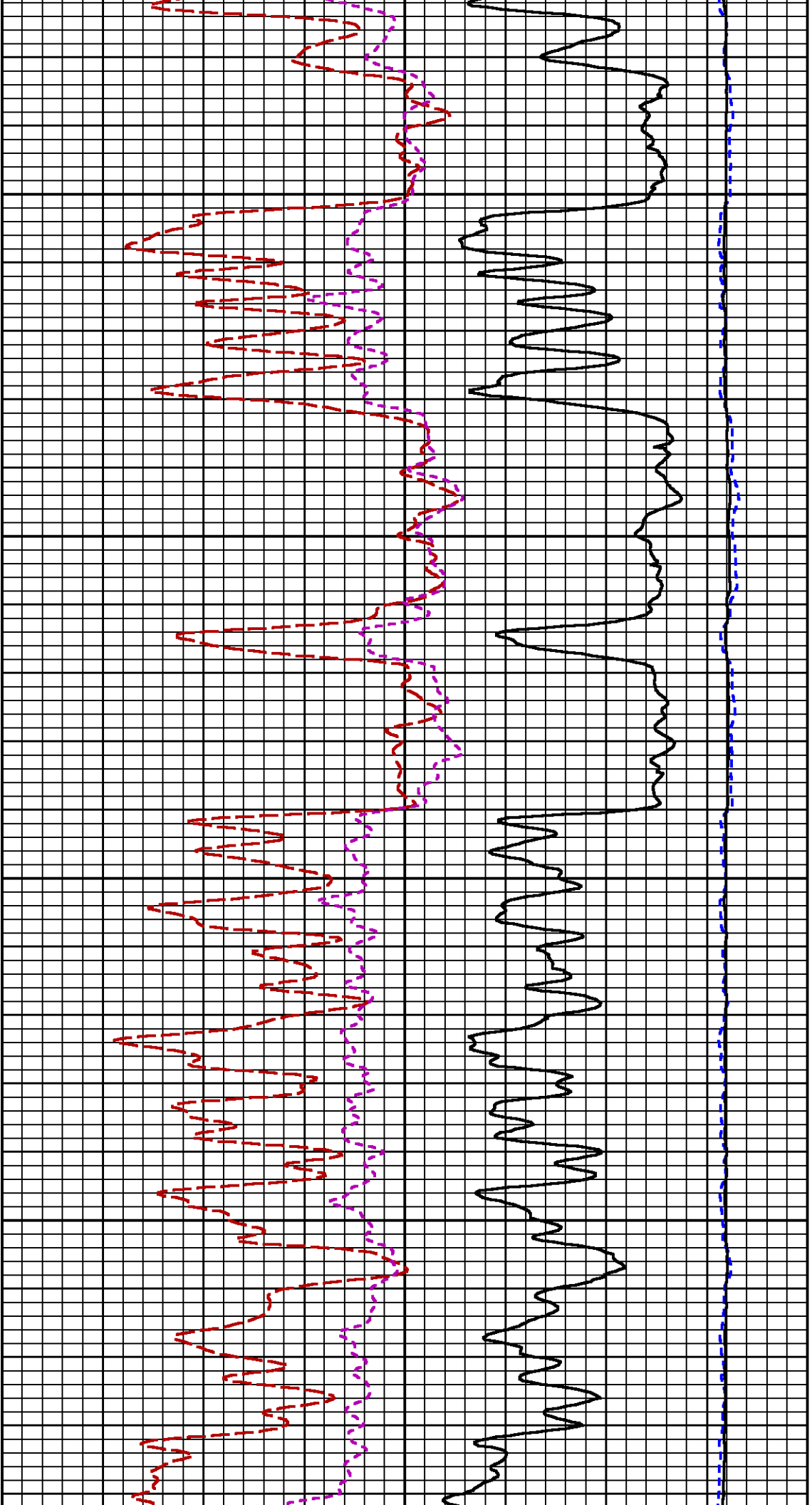
Presentation : HL6670:WPX RPM_PNC3D_MAIN.fvpdf [5"/100' Scale]
Plot Interval : 4550 - 8431.75 Feet

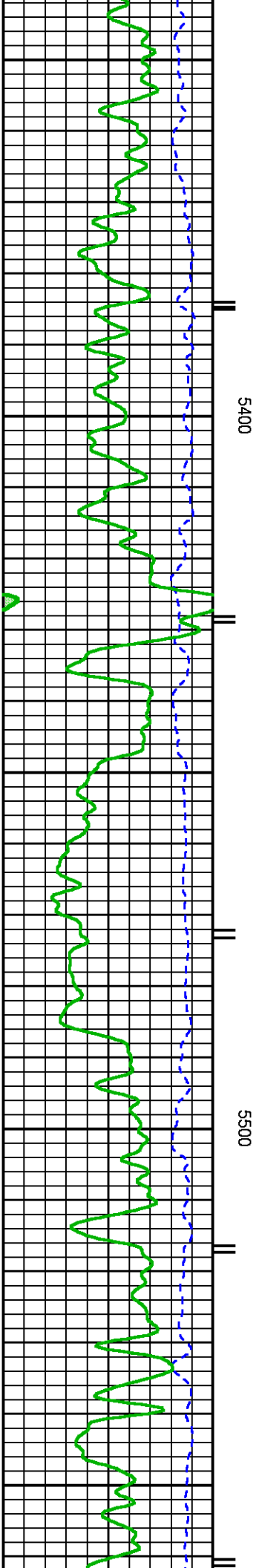
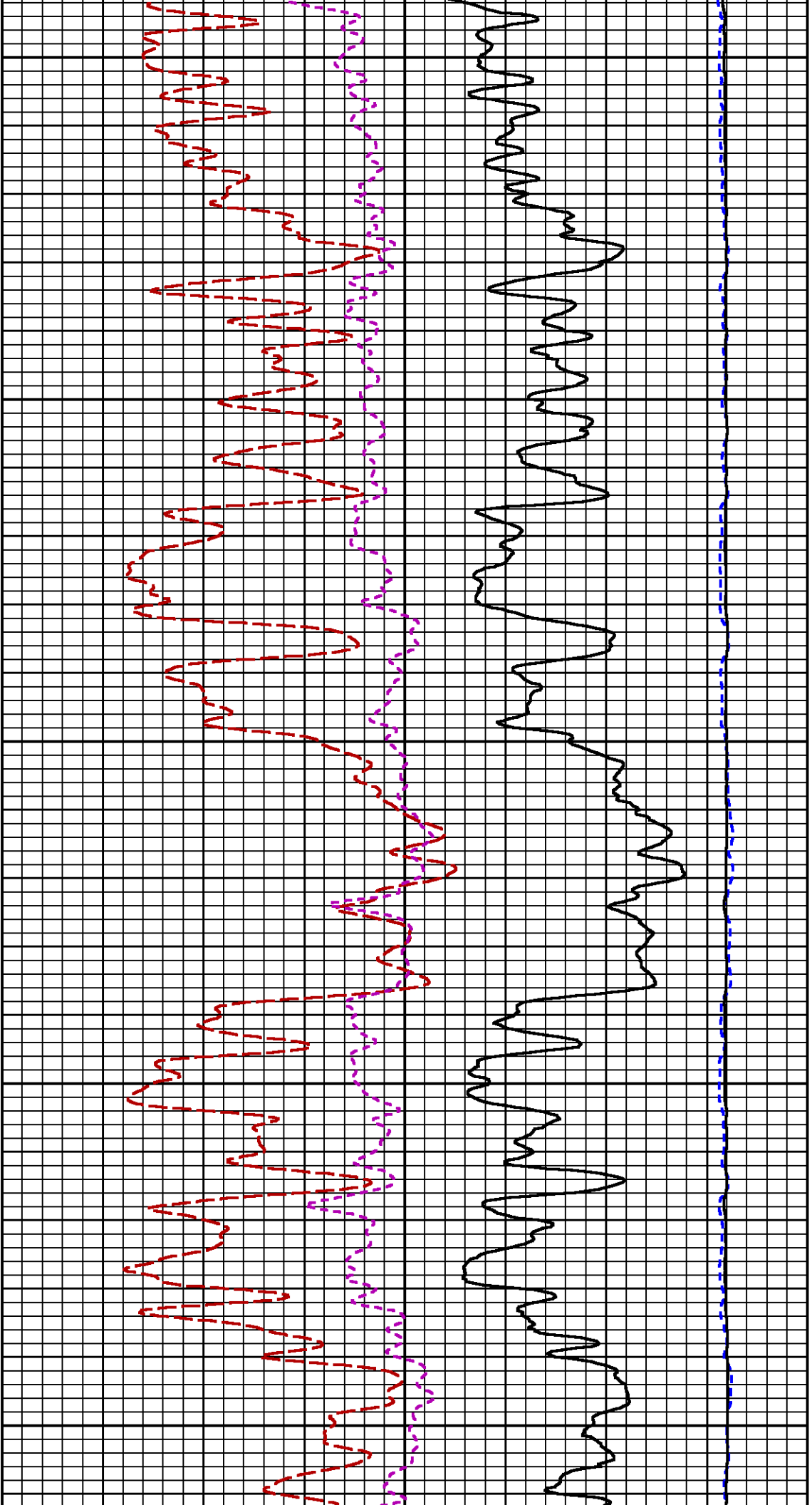
Data File 1 : F1 : HL6670:/dat1a/CH093867/RPM_FINAL.xtf
Created On : Jan 9 13:36:48 2015
Company : WPX ENERGY ROCKY MTN LLC
Well : FEDERAL PA 332-27
Field : PARACHUTE
File Interval : 26 - 8431.75 Feet
OCT : n353h

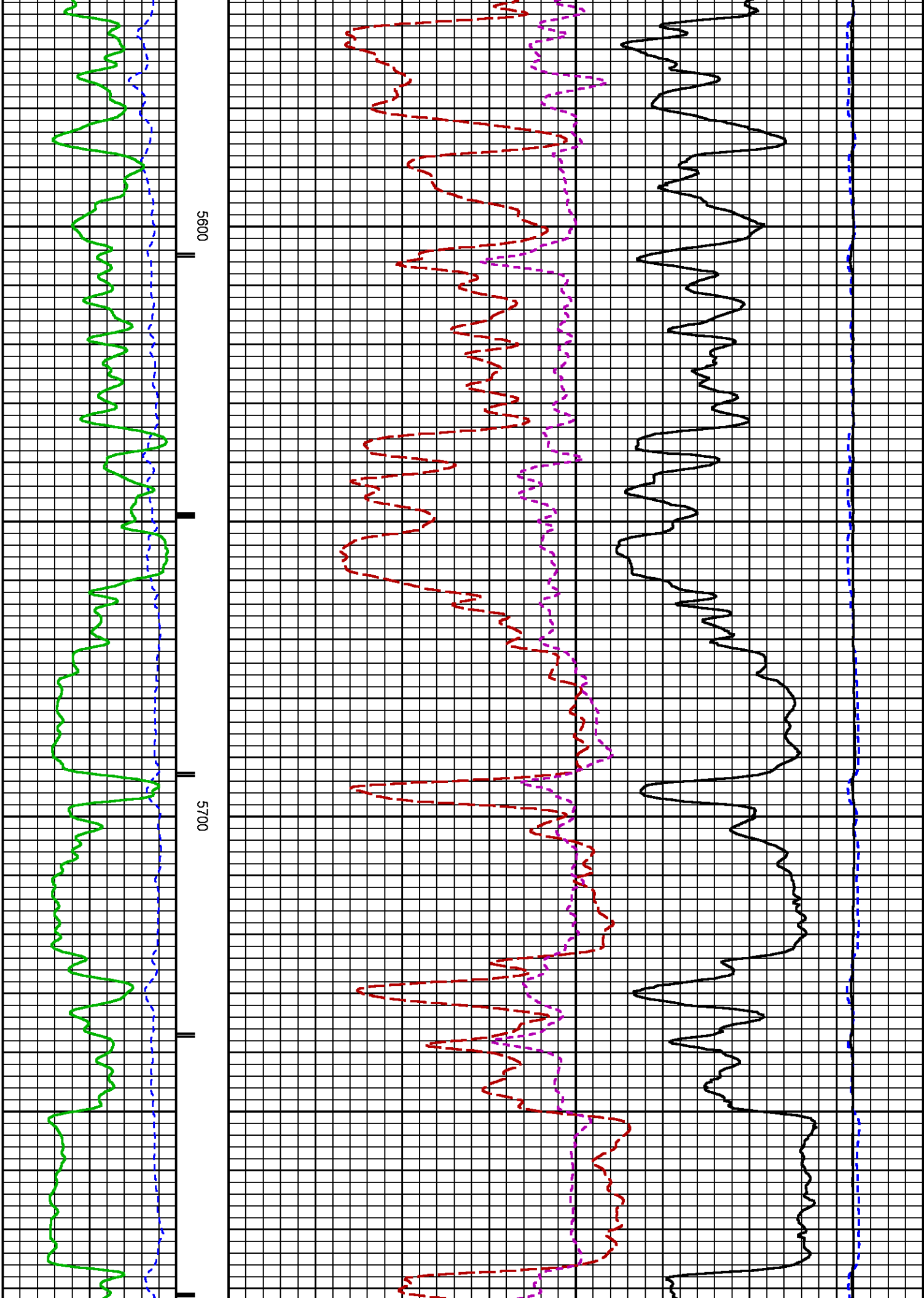


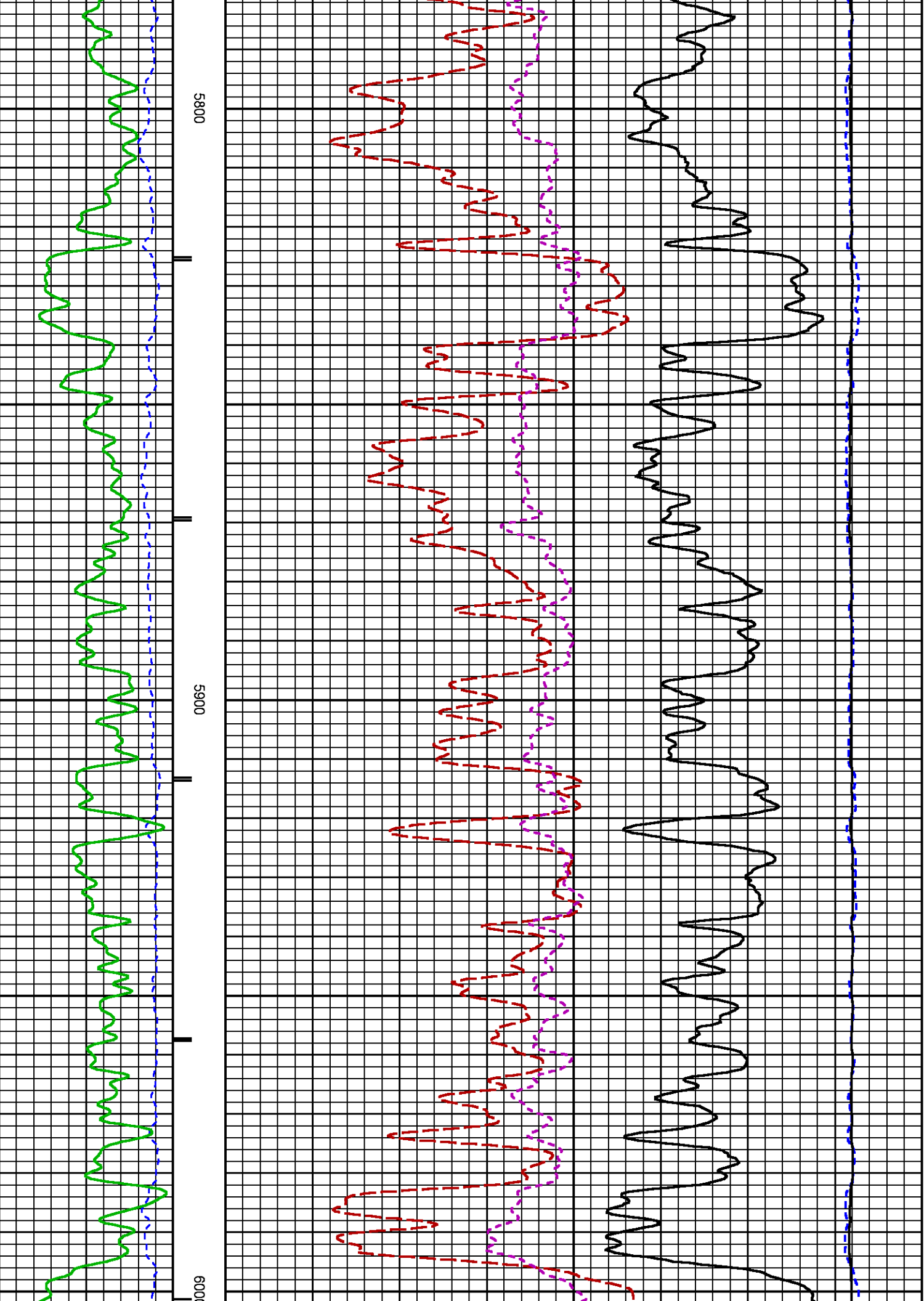


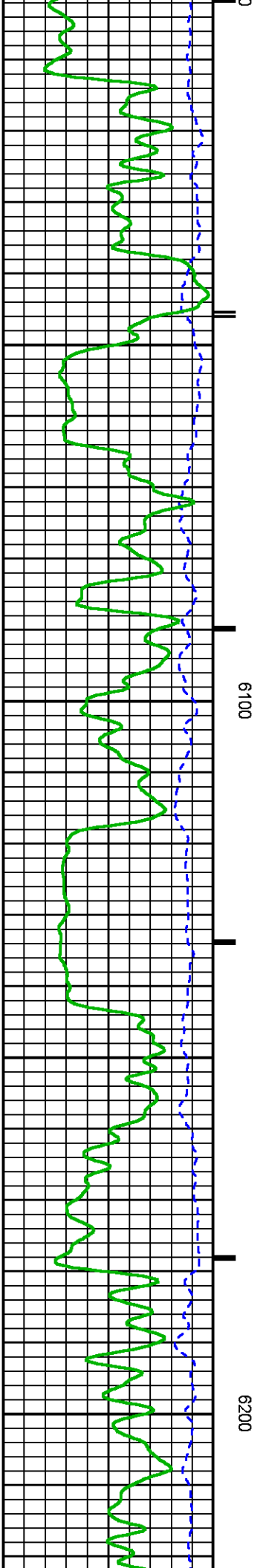
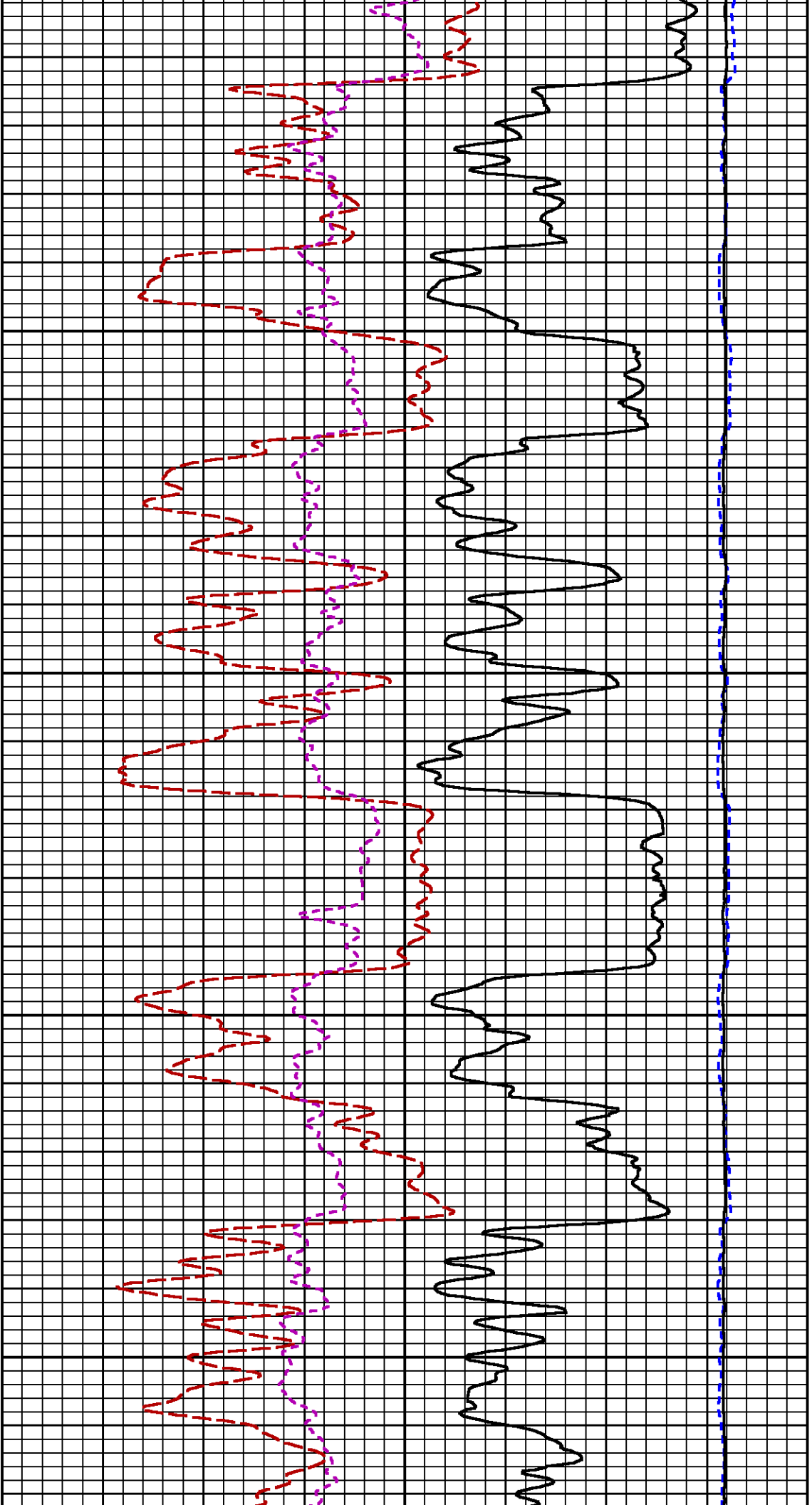


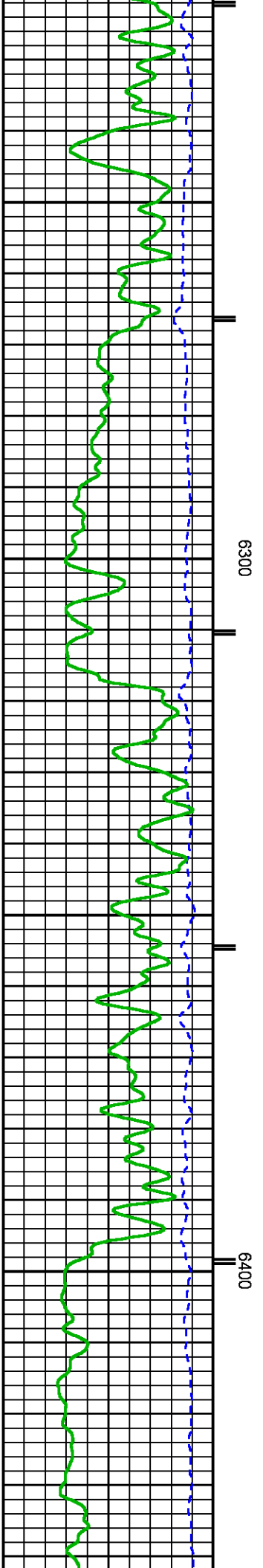
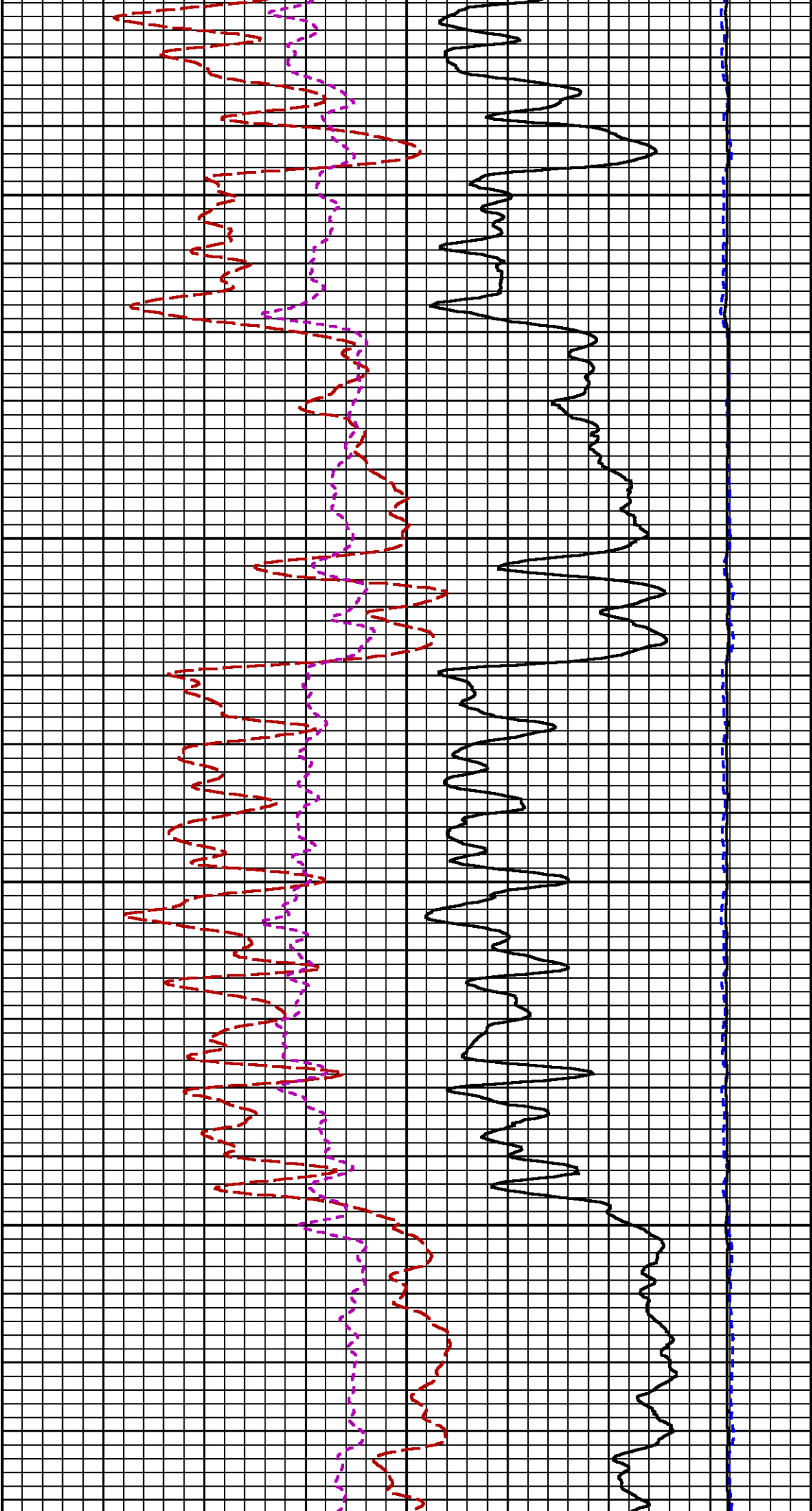


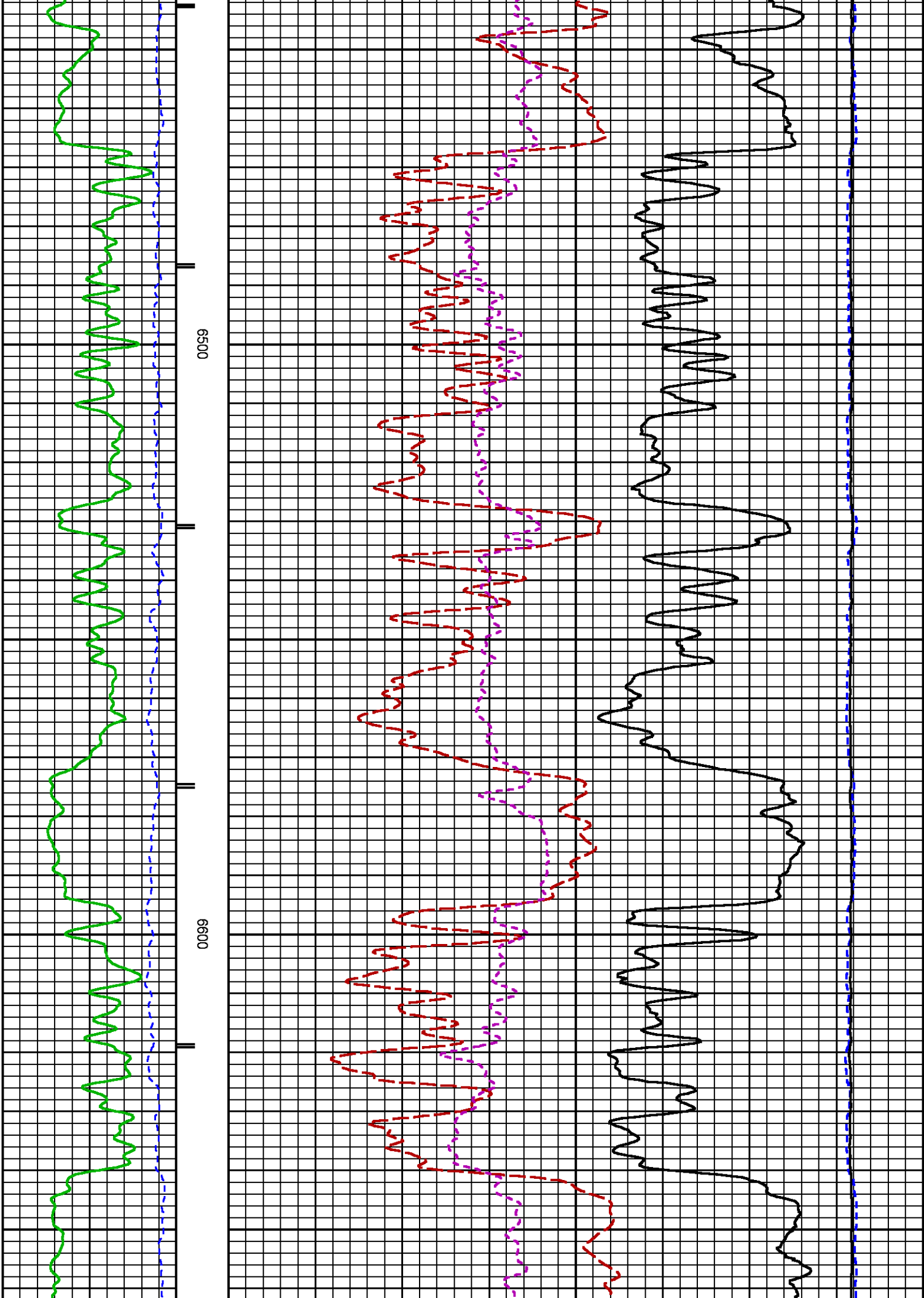


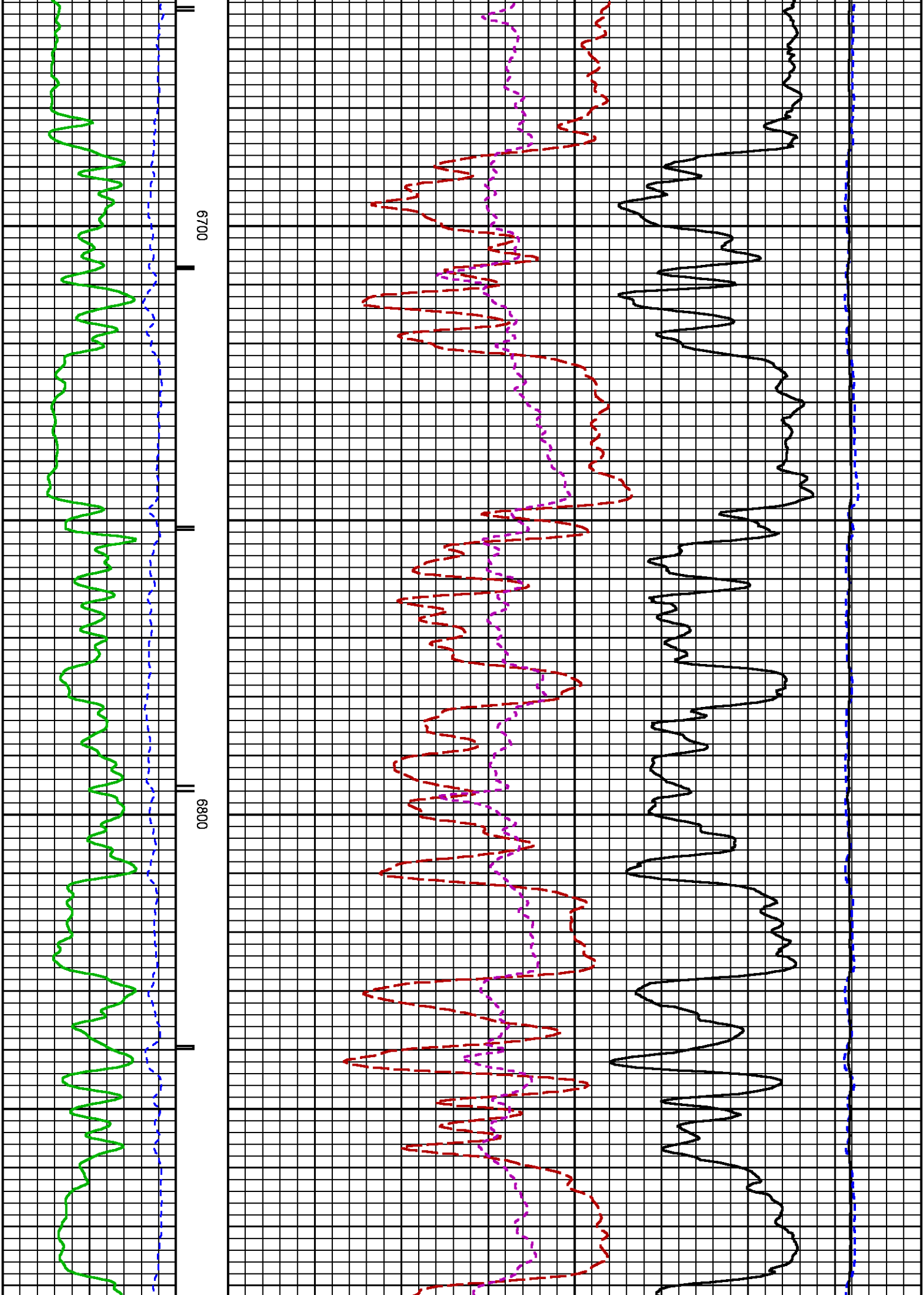


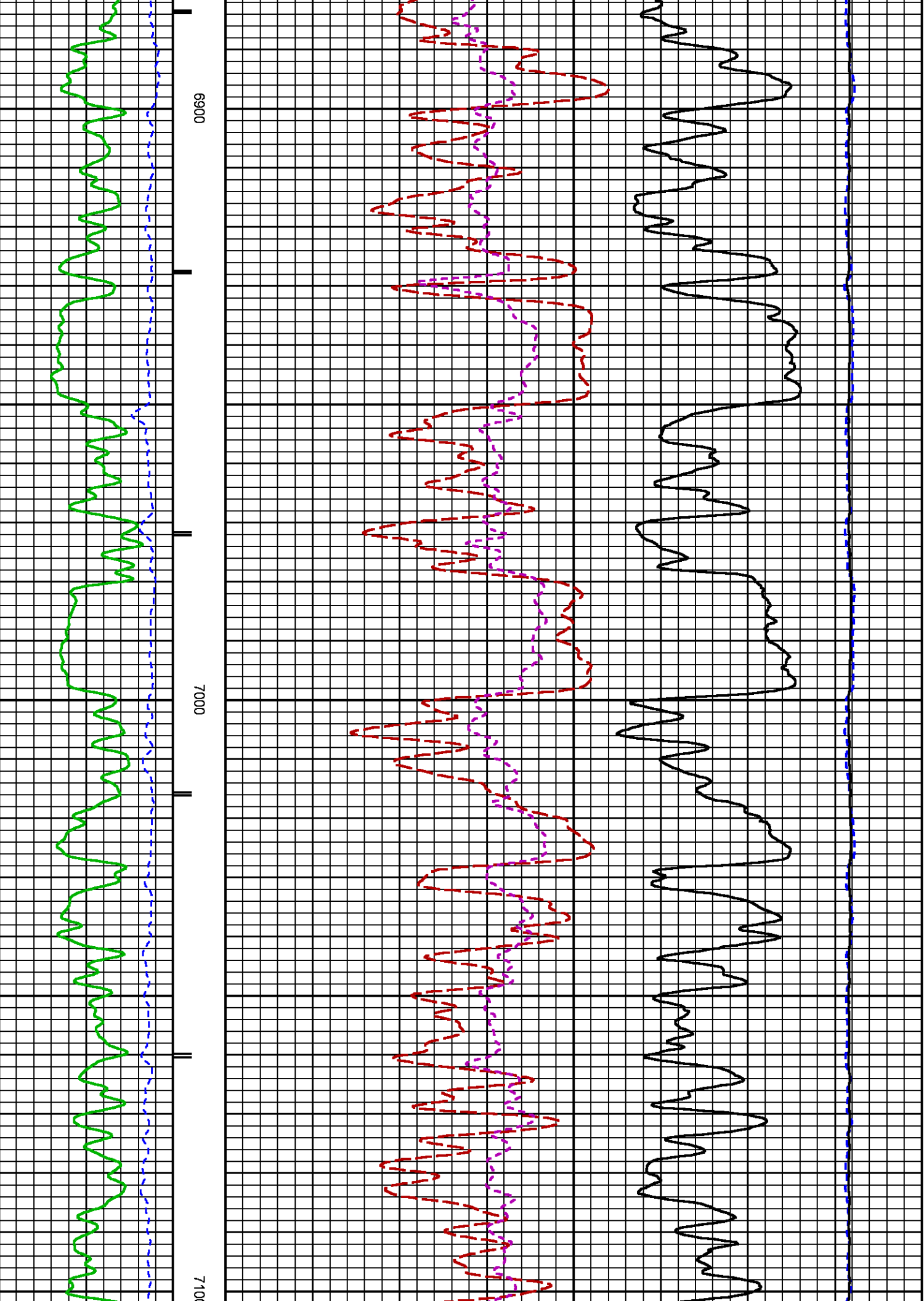


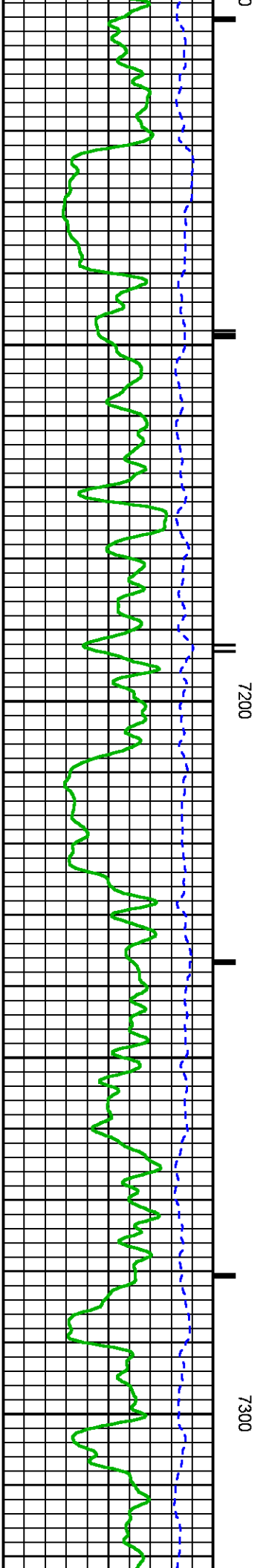
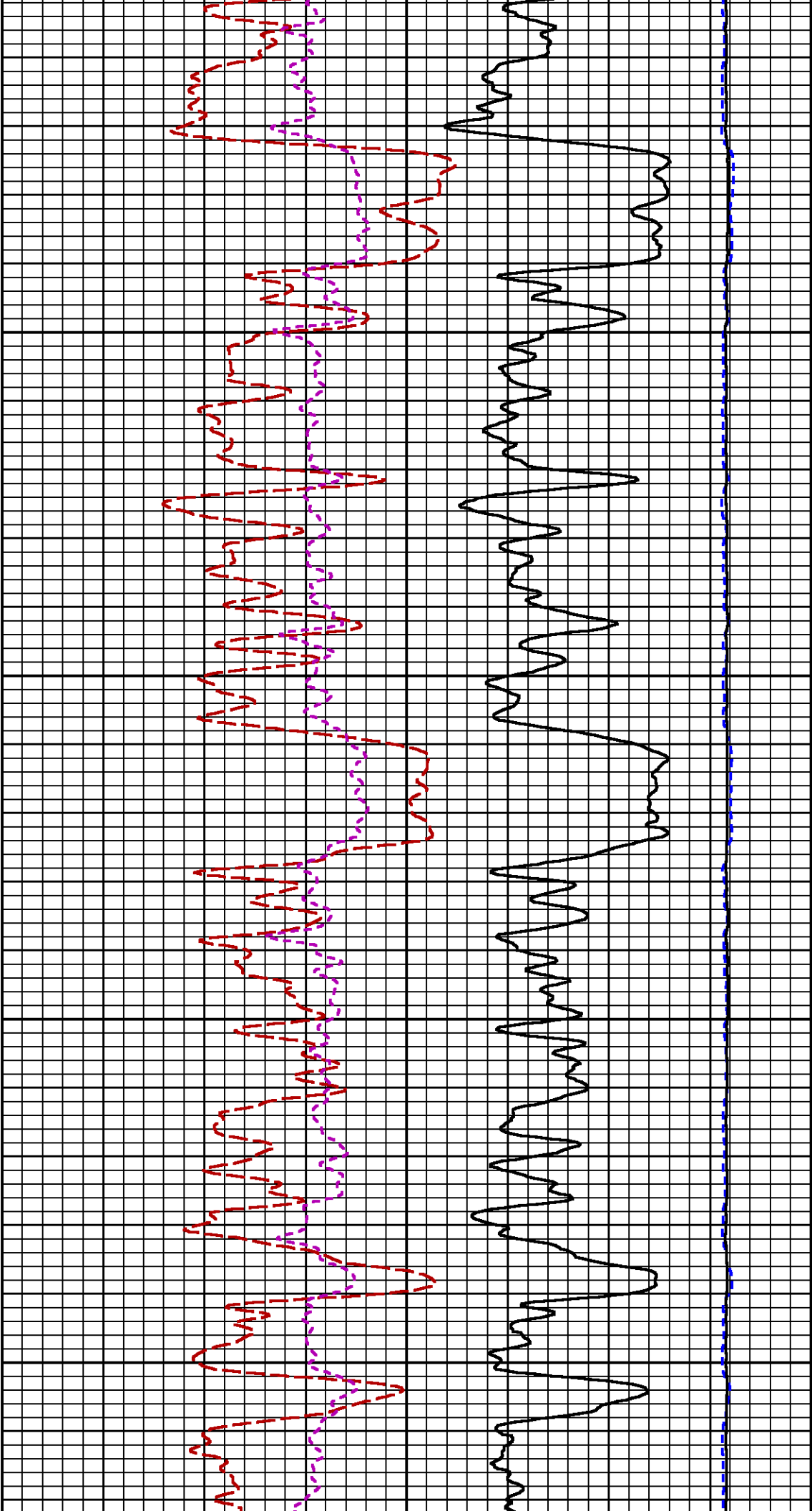


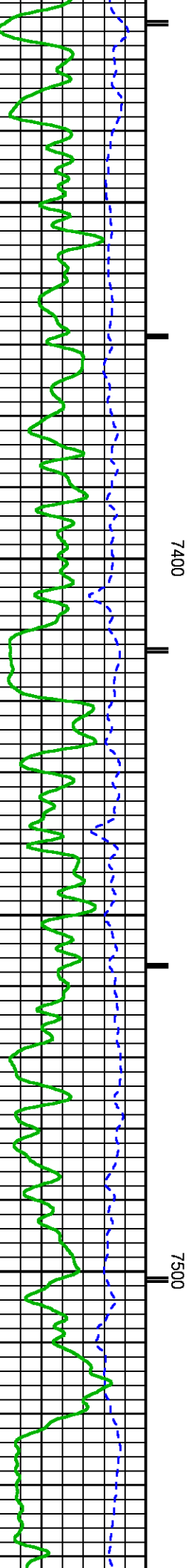
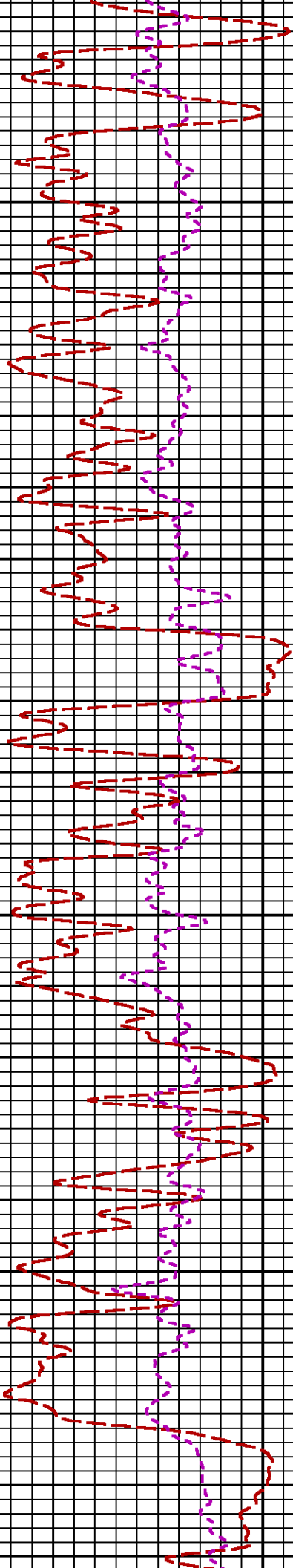
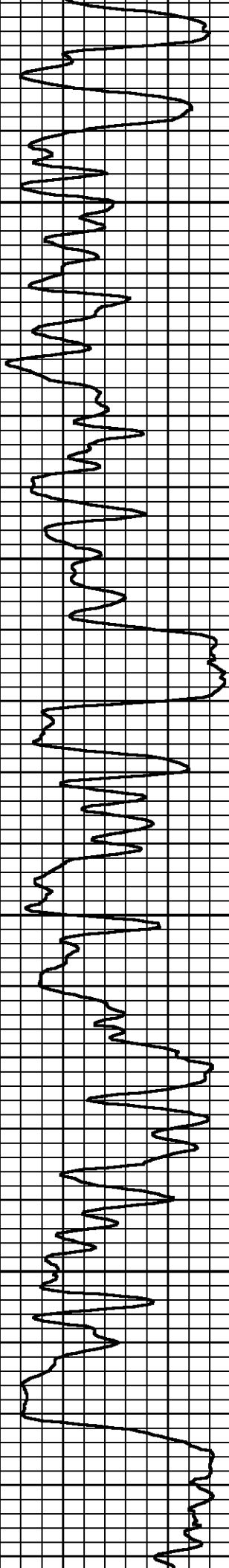






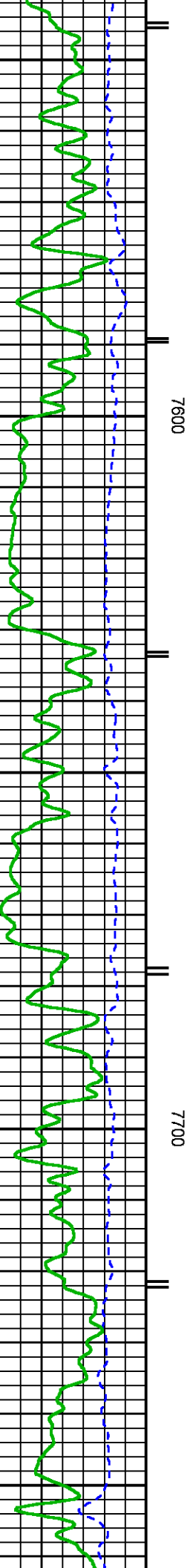
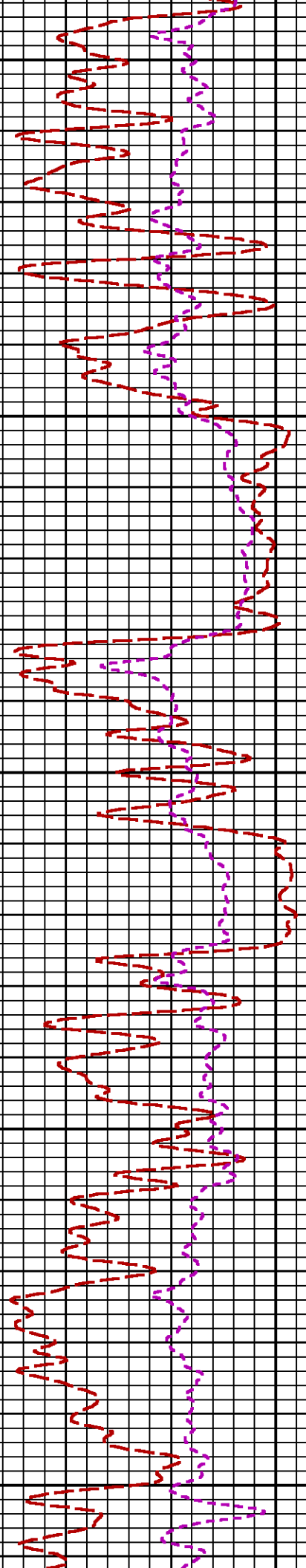
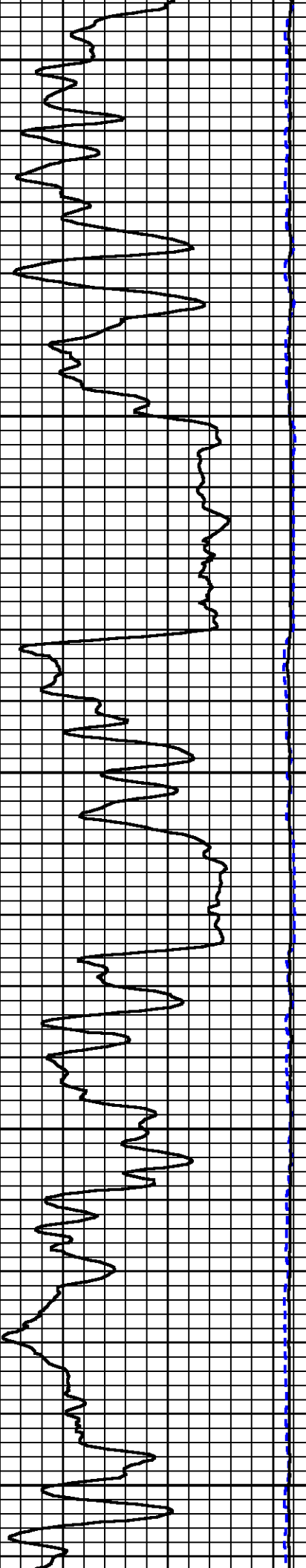


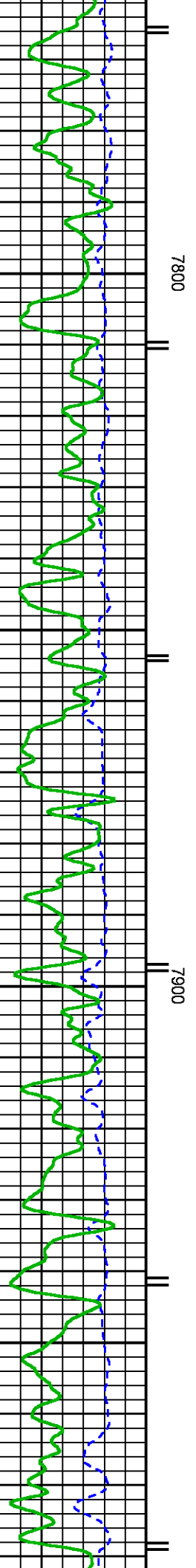
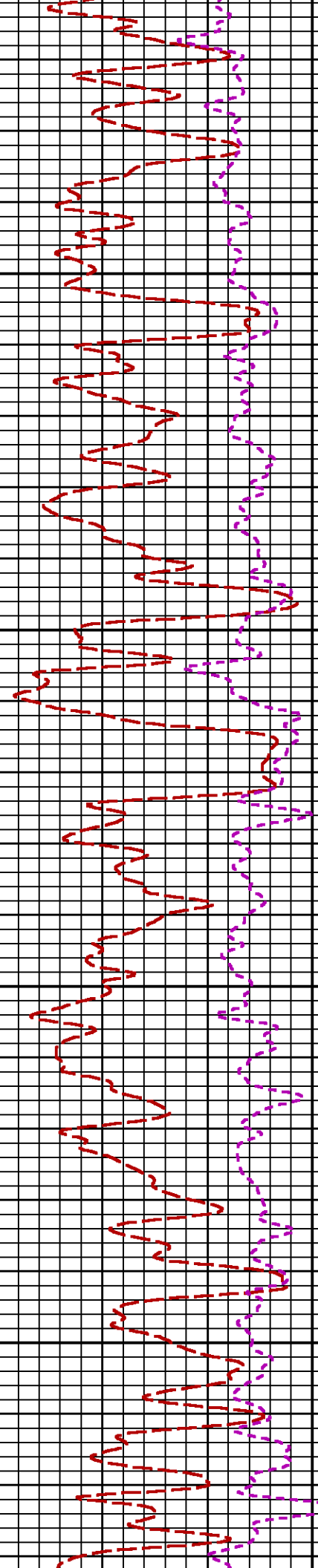
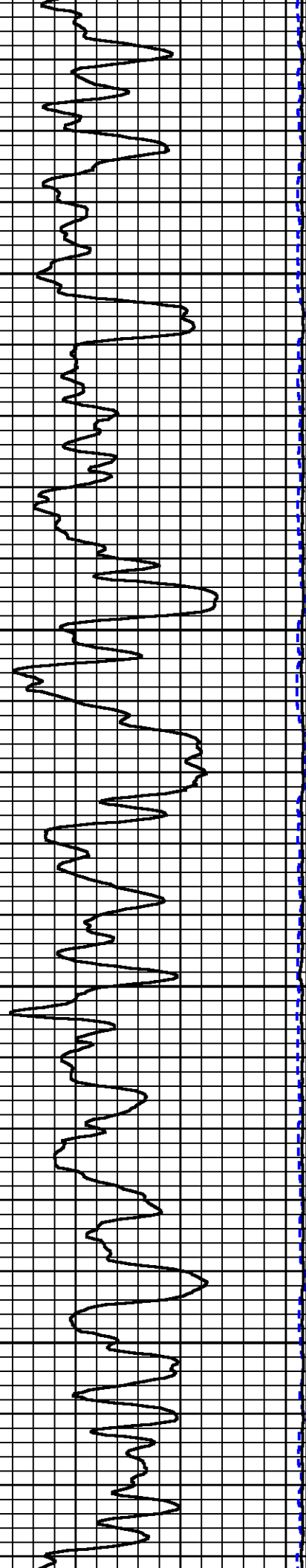


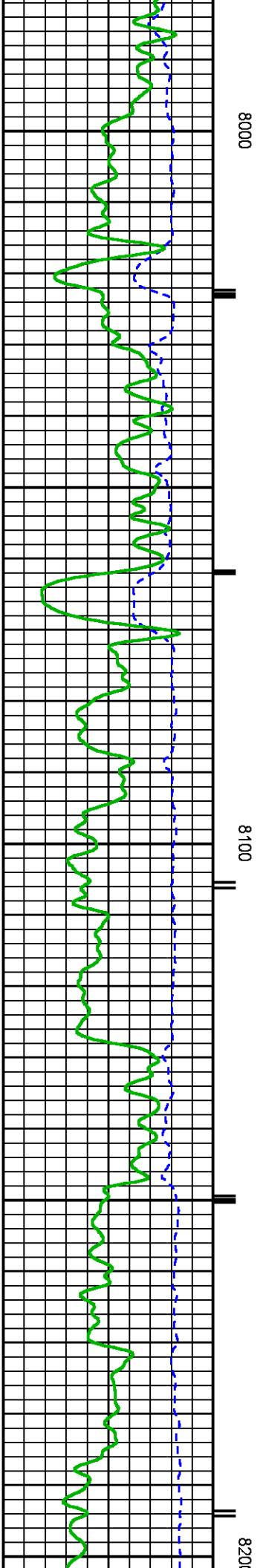
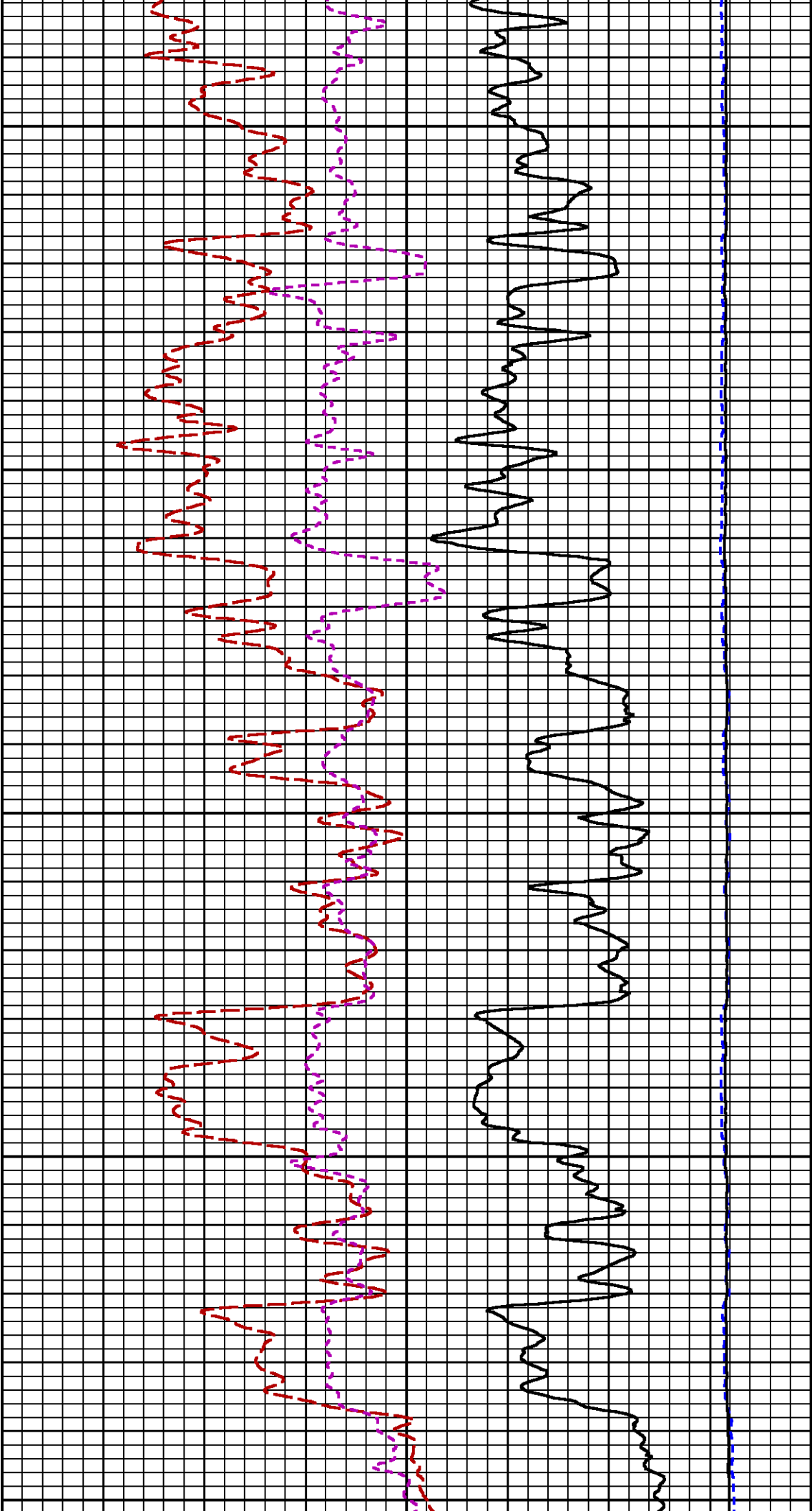


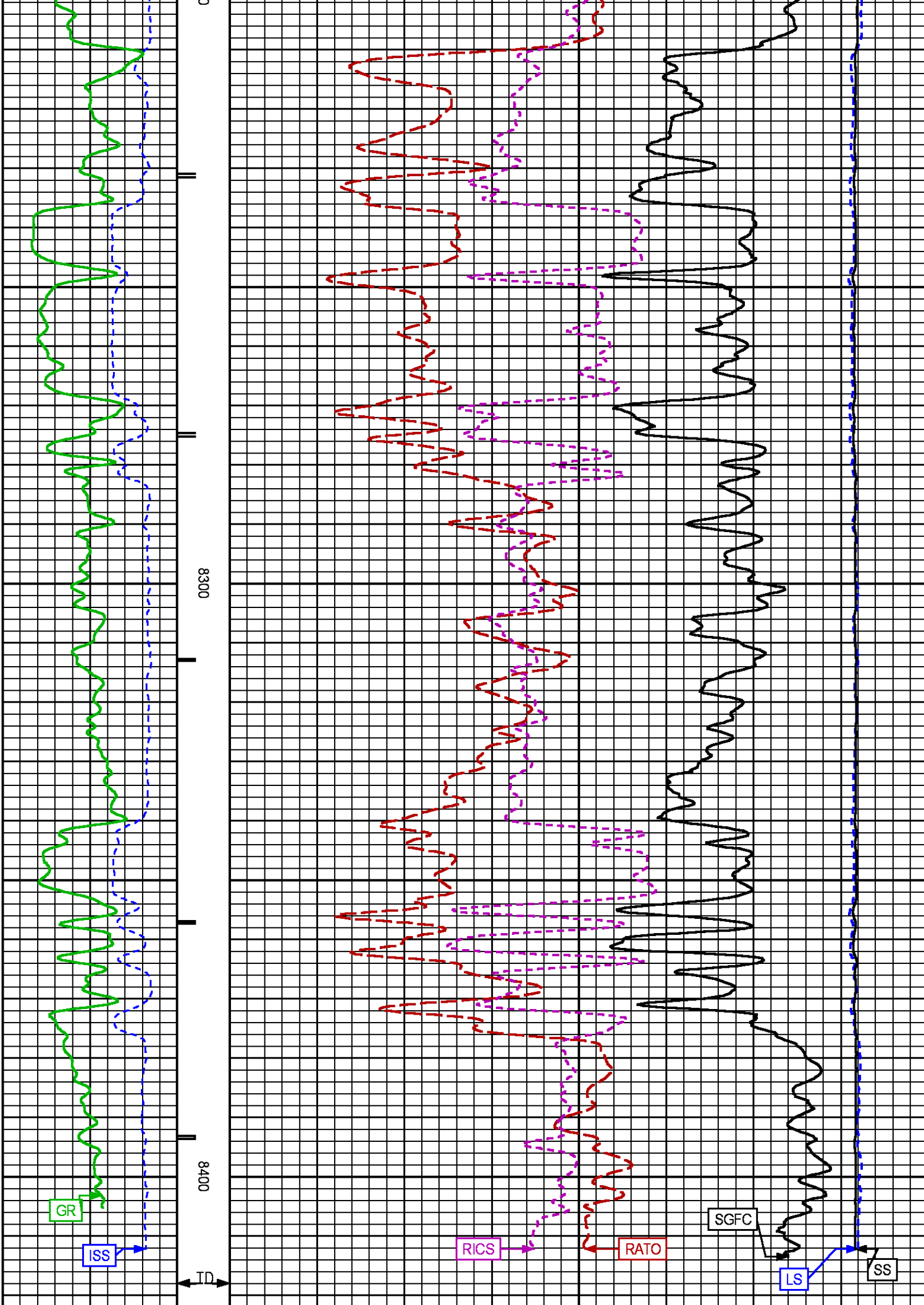
7400

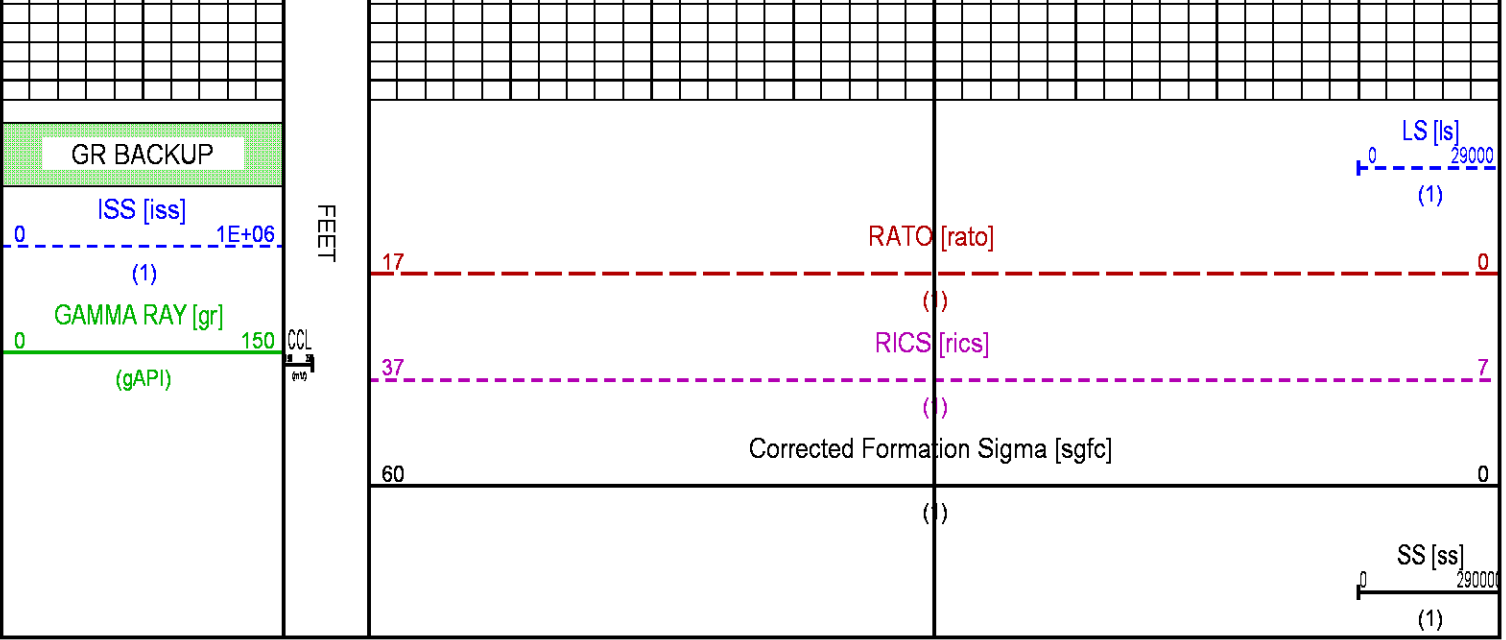
7500











REPEAT LOG

ECLIPS 6.2i ECLIPS General Release Rel 6.2i Wed Jun 12 12:21:40 CDT 2013
Updates: 1 Patches: 4

Plotted: Sat Jan 10 08:53:43 2015

PARAMETER AND FILTER SUMMARY REPORT				
FILE: /dat1a/CH093867/n353h03.prm				
LOGGING MODE: DEPTH DIRECTION: UP				
TOP DEPTH: 7419.250 ft BOTTOM DEPTH: 7926.500 ft				
SYMMETRIC FILTER				
MEASUREMENT TYPE	PARAMETER	VALUE	UNITS	INTERVAL (ft)
GR	FILTER ()	medium (1)		TOP BOTTOM
RPM PROCESSING				
MEASUREMENT TYPE	PARAMETER	VALUE	UNITS	INTERVAL (ft)
PNC Parameters	BOREHOLE CONTENTS	FLUID		TOP BOTTOM
	OPEN/CASED HOLE	CASED HOLE		" "
	BOREHOLE SIZE	8.75	in	" "
	CASING SIZE	4.50	in	" "
	MATRIX	SANDSTONE		" "
	CORRECTION BUFFER	11		" "

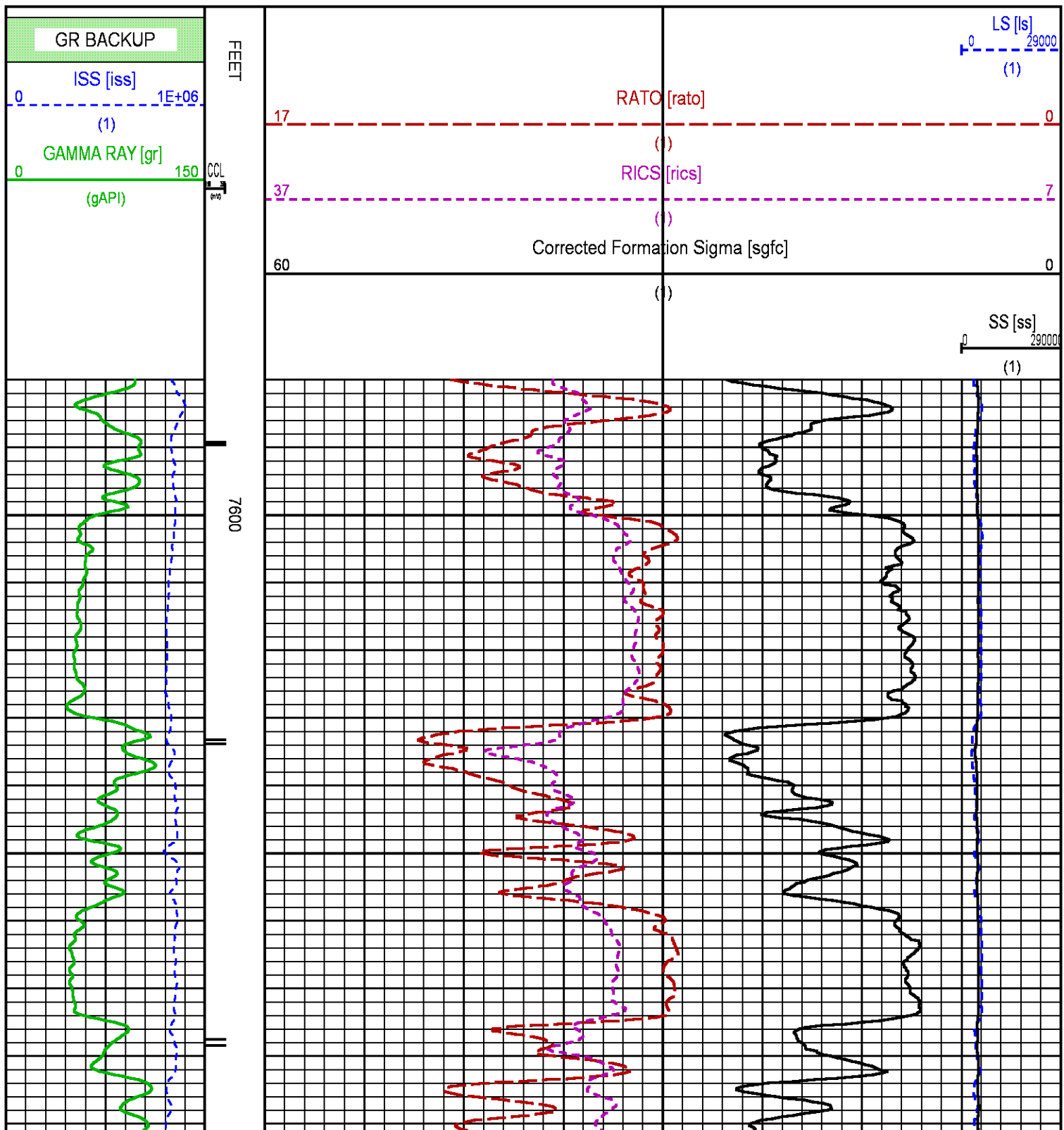
CURVE DESCRIPTION REPORT		
CURVE NAME	CREATION DATE	CURVE DESCRIPTION
F1:CCL	Jan 9 12:59:12 2015	CASING COLLAR LOCATOR
F1:GR	Jan 9 12:59:12 2015	GAMMA RAY
F1:ISS	Jan 9 12:59:12 2015	INELASTIC SHORT SPACE COUNT RATE
F1:LS	Jan 9 12:59:12 2015	LONG SPACE COUNT RATE
F1:RATO	Jan 9 12:59:12 2015	SHORT/LONG SPACE COUNT RATE RATIO
F1:RICS	Jan 9 12:59:12 2015	SHORT SPACE INELASTIC TO CAPTURE COUNT RATE RATIO (ISS/CSS)
F1:SGFC	Jan 9 12:59:12 2015	CORRECTED FORMATION SIGMA
F1:SS	Jan 9 12:59:12 2015	SHORT SPACE COUNT RATE

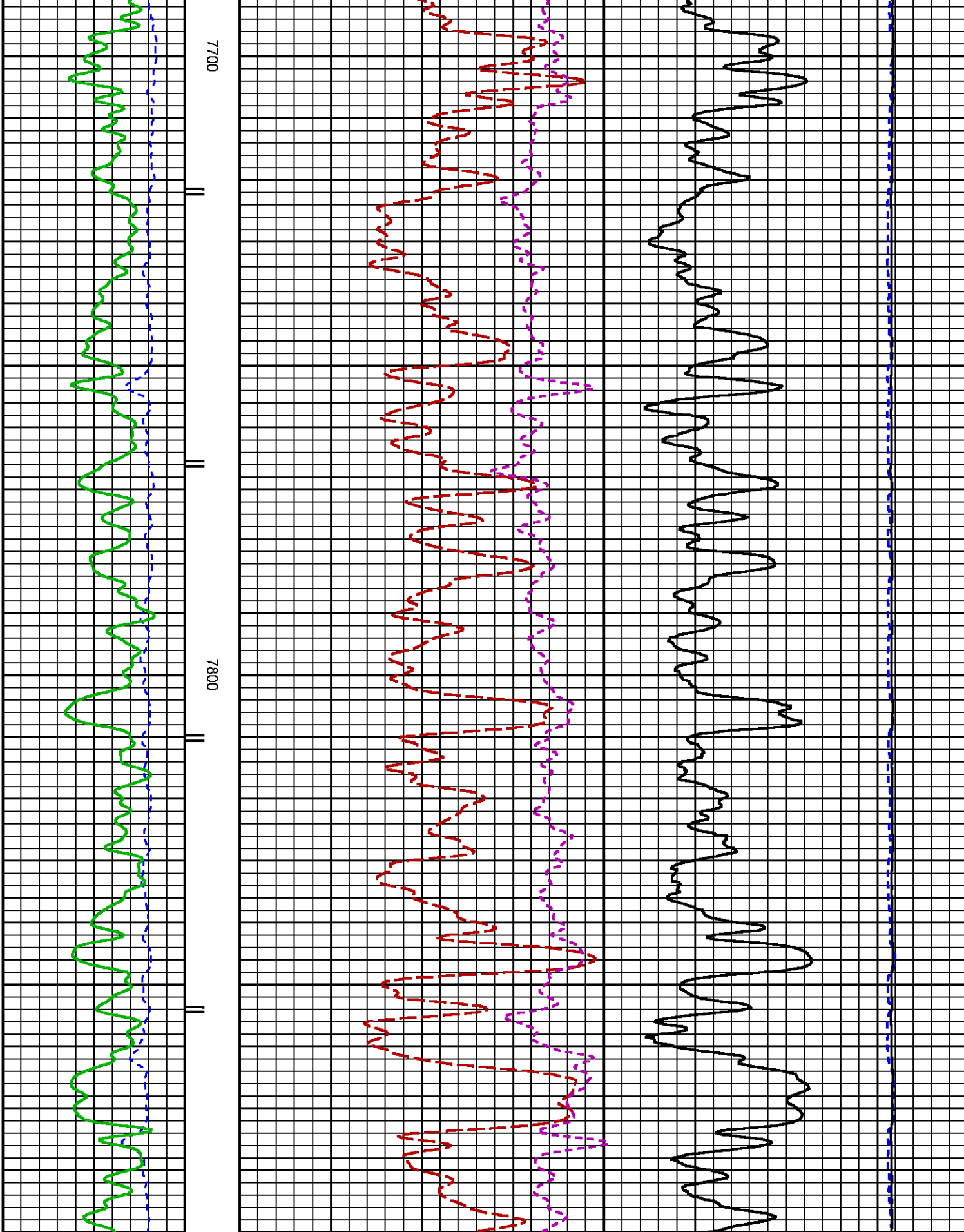
CURVE MEASURE POINT OFFSET

CURVE	OFFSET (ft)	CURVE	OFFSET (ft)	CURVE	OFFSET (ft)	CURVE	OFFSET (ft)
CCL	26.00	ISS	12.75	RATO	12.75	SGFC	12.75
GR	23.00	LS	12.75	RICS	12.75	SS	12.75

Presentation : HL6670:WPX_RPM_PNC_3D_REPEAT.fvpdf [5"/100' Scale]
 Plot Interval : 7580 - 7890 Feet

Data File 1 : F1 : HL6670:/dat1a/CH093867/REPEAT_FINAL.xtf
 Created On : Jan 9 12:59:12 2015
 Company : WPX ENERGY ROCKY MTN LLC
 Well : FEDERAL PA 332-27
 Field : PARACHUTE
 File Interval : 23.75 - 8417.5 Feet
 OCT : n353h





CALIBRATION / VERIFICATION SUMMARY

	ISS	ILS	IXS	SS	SS2	LS	CSS	CLS
Raw Data	810554	168008	26262	88979	31657	8212	53866	13125
Fit Quality %		1.005	1.073	1.006	0.963	1.070	0.923	1.075

Raw Data	810554	1.43	4.82	30.88	15.05	10.84	3.86	4.10
		1.421.45	3.555.52	22.2032.70	10.9916.34	10.0611.10	3.573.95	3.764.22
Fit Quality %		0.060	0.116	0.146	0.173	0.107	0.123	0.104
Reduced	1414033	1.43	4.84	30.92	15.08	10.85	3.86	4.11
		1.421.45	4.335.52	27.6032.70	13.7016.34	10.0611.10	3.573.95	3.764.22

TPSETEMP PRIMARY CALIBRATION SUMMARY

TOOL #: 8255XA 11774568

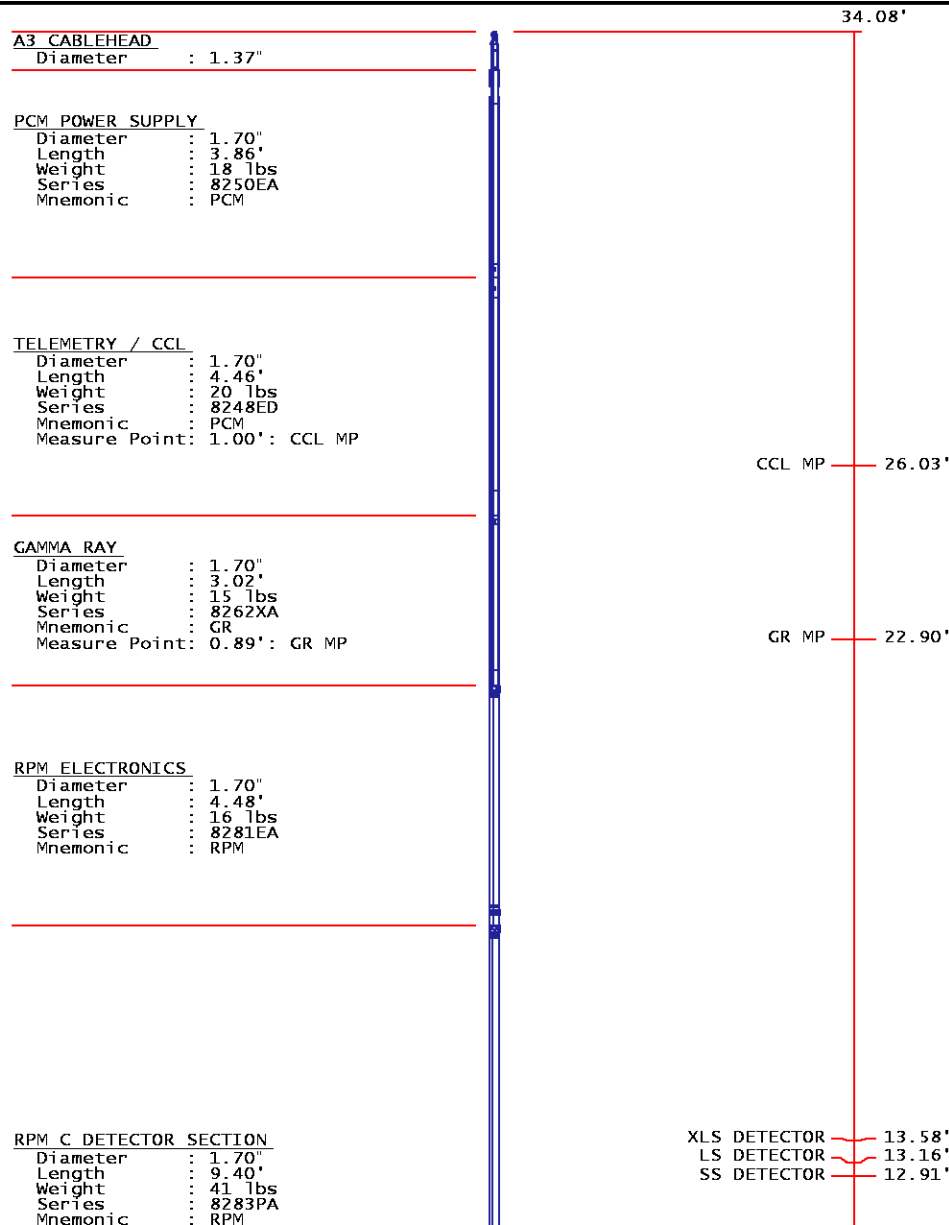
DATE/TIME PERFORMED: Wed May 14 12:39:45 2014

UNIT #: 3880TA HL6670

	T(0)	T(1)	T(2)	T(3)
Corr Coeff for Temp	-9.274653E+00	1.055639E-01	2.143764E-06	-2.782846E-10

INSTRUMENT CONFIGURATION

Source File: /dat1a/CH093867/n353h~tdg



Measure Point: 5.45': XLS DETECTOR
Measure Point: 5.04': LS DETECTOR
Measure Point: 4.79': SS DETECTOR

RPM SOURCE SECTION

Diameter : 1.70"
Length : 4.70'
Weight : 18 lbs
Series : 8281FA
Mnemonic : RPM

TEMPERATURE / PRESSURE

Diameter : 1.70"
Length : 3.30'
Weight : 13 lbs
Series : 8255XA
Mnemonic : SRPL
Measure Point: 1.52': TEMP MP

TEMP MP
PRES MP

1.65'

BULL PLUG 1 11/16

0.00'

TOTAL LENGTH: 34.08'
TOTAL WEIGHT: 144 lbs
MAX DIAMETER: 0'1.70"





WELL	FEDERAL PA 332-27		US093867
FIELD	PARACHUTE		API NO:
COUNTY	GARFIELD	STATE CO	0504522400000
LOCATION:		ELEVATIONS:	S27 T6S R95W
SHL: 2360' FNL; 648' FEL		KB 5882 FT	PAD: DOE 2-W-27
BHL: 2170' FNL; 1594' FEL		DF	RIG: NABORS 576
SEC 27 TWP 6S RGE 95W		GL 5856 FT	
		DATE	09-Jan-2015