



FILE NO: MD11429 COMPANY COACHMAN ENERGY OPERATING COMPANY

API NO: 05-103-12274 WELL SHAVETAIL FEDERAL 28-44

Ver. 4.01 LOCATION: 1381' FSL & 380' FEL OTHER SERVICES  
ZDLCN/GR  
HDIL  
XMAC

FINAL PRINT SEC 28 TWP 1N RGE 103W

PERMANENT DATUM GL ELEVATION 5690 FT ELEVATIONS:  
LOG MEASURED FROM KB 11 FT ABOVE P.D. KB 5601 FT  
DRILL. MEAS. FROM KELLY BUSHING DF 5600 FT  
GL 5690 FT

DATE 26-AUG-2015

RUN 1 TRIP 1

SERVICE ORDER 098516

DEPTH DRILLER 4730 FT

DEPTH LOGGER 4721 FT

BOTTOM LOGGED INTERVAL 4686 FT

TOP LOGGED INTERVAL 531 FT

CASING DRILLER 8.625 IN @ 529 FT

CASING LOGGER 531 FT

BIT SIZE 7.875 IN

TYPE OF FLUID IN HOLE FRESH

DENSITY 9.2 LB/G 14 CP

PH 8.9 7.6 C3

SOURCE OF SAMPLE MEASURED

RM AT MEAS. TEMP. 1.2 OHMM @ 87 DEGF

RMF AT MEAS. TEMP. 0.9 OHMM @ 87 DEGF

RMC AT MEAS. TEMP. 1.5 OHMM @ 87 DEGF

SOURCE OF RMF CALCULATED CALCULATED

RM AT BHT 1.39 OHMM @ 123 DEGF

TIME SINCE CIRCULATION 8 HOURS

MAX. RECORDED TEMP. 123 DEGF

EQUIP. NO. HL6713 LOCATION ODESSA

RECORDED BY W. LOUSTALOT

WITNESSED BY P. BLACKMER

IN MAKING INTERPRETATIONS OF LOGS OUR EMPLOYEES WILL GIVE THE CUSTOMER THE BENEFIT OF THEIR BEST JUDGEMENT. BUT SINCE ALL INTERPRETATIONS ARE OPINIONS BASED ON INFERENCES FROM ELECTRICAL OR OTHER MEASUREMENTS, WE CANNOT, AND WE DO NOT GUARANTEE THE ACCURACY OR CORRECTNESS OF ANY INTERPRETATION. WE SHALL NOT BE LIABLE OR RESPONSIBLE FOR ANY LOSS, COST, DAMAGES, OR EXPENSES WHATSOEVER INCURRED OR SUSTAINED BY THE CUSTOMER RESULTING FROM ANY INTERPRETATION MADE BY ANY OF OUR EMPLOYEES.

### BOREHOLE RECORD

BIT SIZE	FROM	TO
12.25 IN	0 FT	529 FT
7.875 IN	529 FT	4730 FT

### CASING RECORD

SIZE	WEIGHT	GRADE	FROM	TO
8.625 IN	24 LB/F		0 FT	529 FT
4.5 IN	11.6 LB/F			

### REMARKS

RUN 1 TRIP 1: NACL: 3879 PPM  
CL: 2358 PPM

BOREHOLE & CEMENT VOLUME PRESENTED (TOTAL VOLUME LESS 4.5 CSG)

1 SMALL TICK = 10 CU. FT.  
1 MEDIUM TICK = 100 CU. FT.  
1 LARGE TICK = 1000 CU. FT.

BVOL AT CSG SHOE: 1623.764 CU. FT.  
CVOL AT CSG SHOE: 1159.054 CU. FT.

CREW: J. ORONA, J. BERNARD, J. ESPINOZA  
RIG: CAPSTAR 314

## EQUIPMENT DATA

RUN	TRIP	TOOL	SERIES NO.	SERIAL NO.	POSITION
1	1	TTRM	3981XA	10295914	FREE
1	1	COMN REMT	3514XB	10391229	FREE
1	1	DSL	1329XA	Z177857	DECENTRALIZED
1	1	CN	2446XA	Z179989	DECENTRALIZED
1	1	ZDL	2234XA	10495292	PAD DEVICE
1	1	KNUCKLE	3939XA	12949575	FREE
1	1	HDIL EA	1515EA	12096519	CENTRALIZED
1	1	HDIL	1515MA	12128131	CENTRALIZED

## CEMENT VOLUME LOG WITH 4.5" CASING

ECLIPS 6.2i ECLIPS General Release Rel 6.2i Wed Jun 12 12:21:40 CDT 2013

Updates: 1 Patches: 7

Plotted: Wed Aug 26 13:11:08 2015

## PARAMETER AND FILTER SUMMARY REPORT

File: /dat1a/md11429/CYNO02.prm  
 LOGGING MODE: DEPTH DIRECTION: UP  
 TOP DEPTH: 78.000 ft BOTTOM DEPTH: 4744.000 ft

## SYMMETRIC FILTER

MEASUREMENT TYPE	PARAMETER	VALUE	UNITS	INTERVAL (ft)	
CHT	FILTER ( )	medium (1)		TOP	BOTTOM
Y AXIS CALIPER	FILTER ( )	medium (1)		"	"
GR	FILTER ( )	medium (1)		"	"
CALIPER	FILTER ( )	medium (1)		"	"
	FILTER (.h)	medium (1)		"	"
	FILTER (.i)	medium (1)		"	"

## BOREHOLE &amp; CEMENT

MEASUREMENT TYPE	PARAMETER	VALUE	UNITS	INTERVAL (ft)	
CASING - BOREHOLE & CEMENT VOLUME	CASING O.D.	4.500	in	TOP	BOTTOM
BIT SIZE	BIT SIZE	7.875	in	"	"

## CURVE DESCRIPTION REPORT

CURVE NAME	CREATION DATE	CURVE DESCRIPTION
F1:BIT	Aug 26 07:47:17 2015	BIT SIZE
F1:BVOL	Aug 26 07:47:17 2015	BOREHOLE VOLUME
F1:CALX	Aug 26 07:47:17 2015	CALIPER FROM X-AXIS OF XY CALIPER(S)
F1:CHT	Aug 26 07:47:17 2015	CABLE HEAD TENSION
F1:CVOL	Aug 26 07:47:17 2015	CEMENT VOLUME
F1:GR	Aug 26 07:47:17 2015	GAMMA RAY

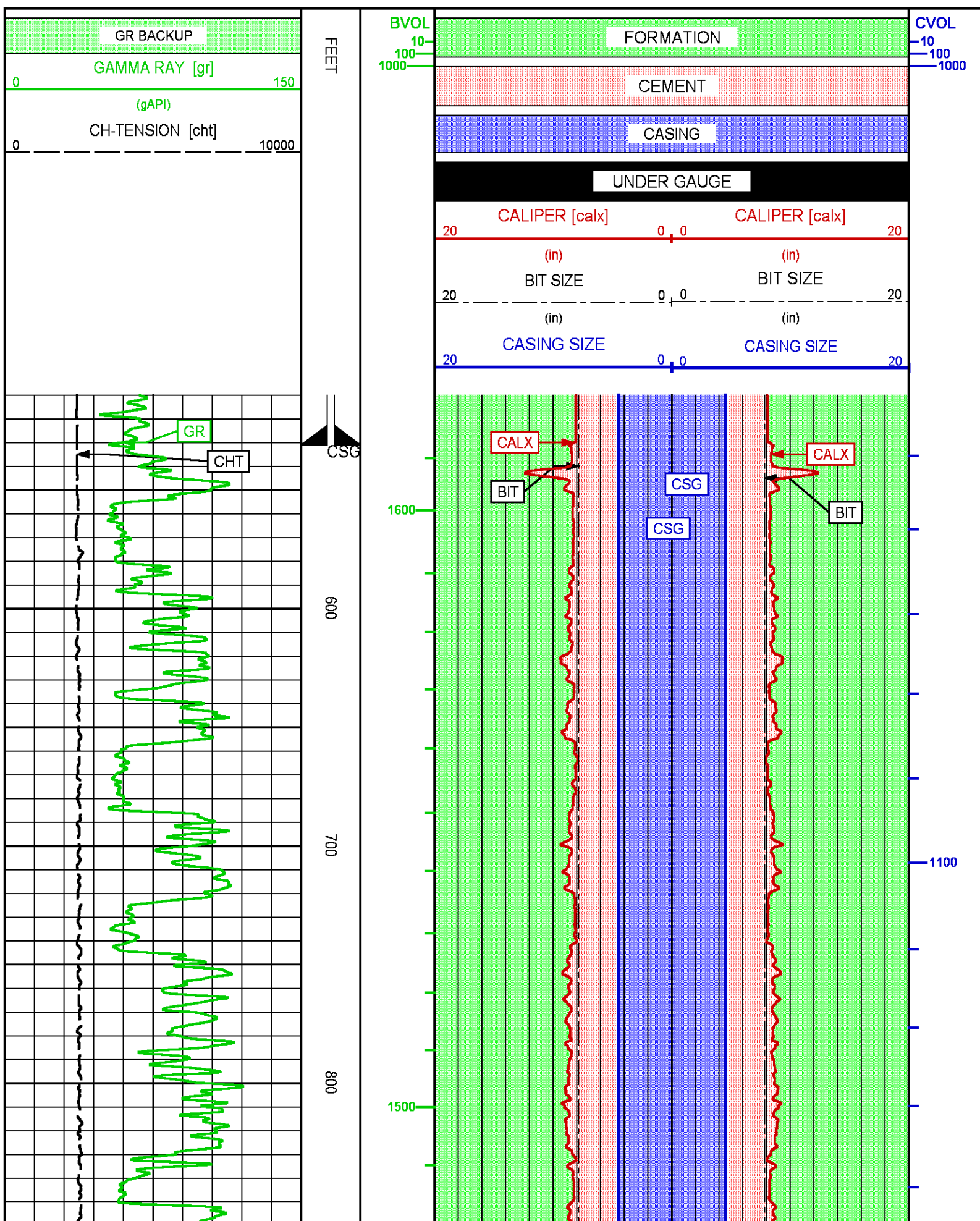
## CURVE MEASURE POINT OFFSET

CURVE	OFFSET (ft)	CURVE	OFFSET (ft)	CURVE	OFFSET (ft)	CURVE	OFFSET (ft)
BIT	0.00	CALX	35.00	CHT	0.00	GR	52.25

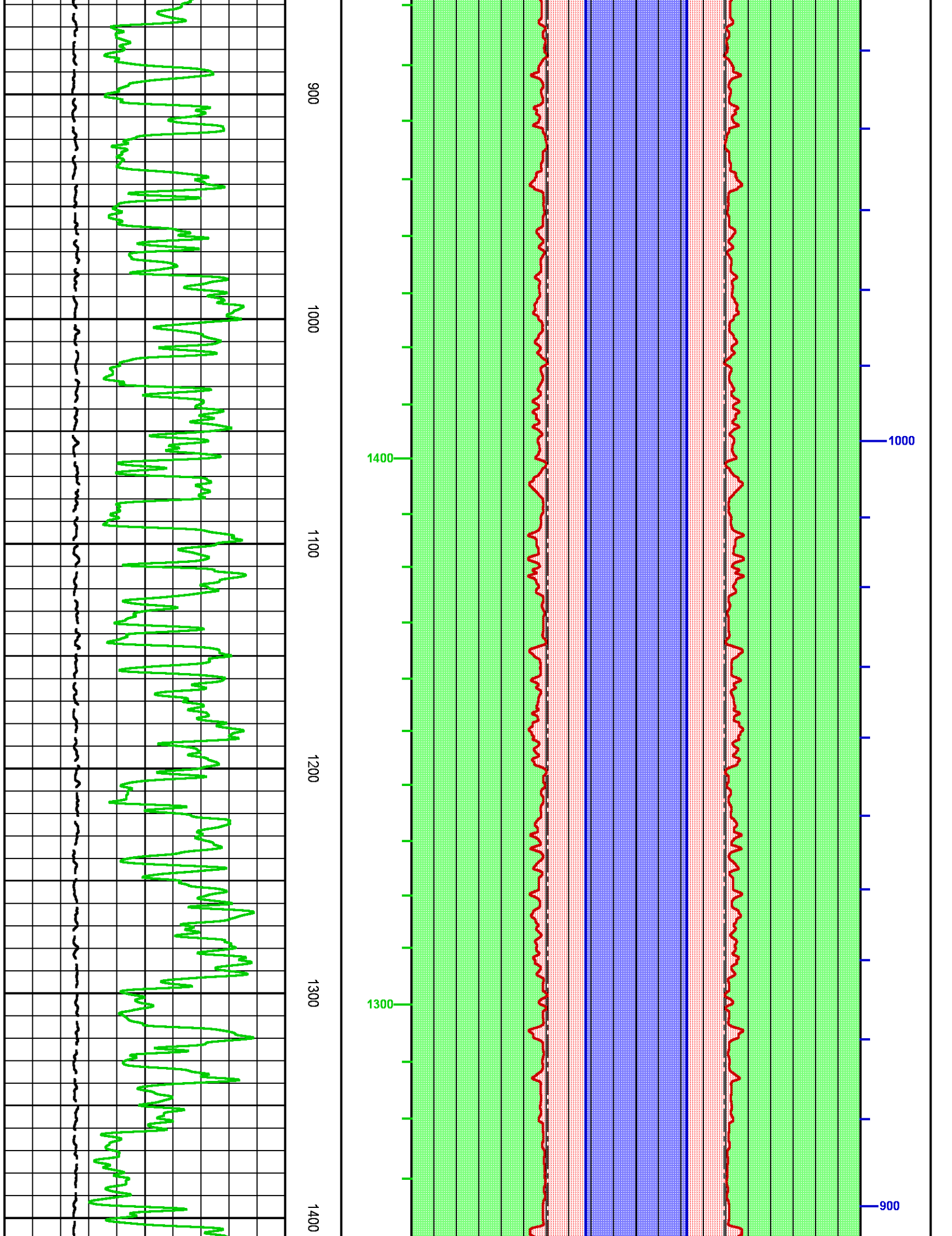
Presentation : sys1:/dat1a/md11429/CAL.fvpdfr [2"/100' Scale]  
 Plot Interval : 510 - 4744 Feet

Data File 1 : F1 : sys1:/dat1a/md11429/MAIN.xtf  
 Created On : Aug 26 07:47:17 2015  
 Company : COACHMAN ENERGY OPERATING COMPANY

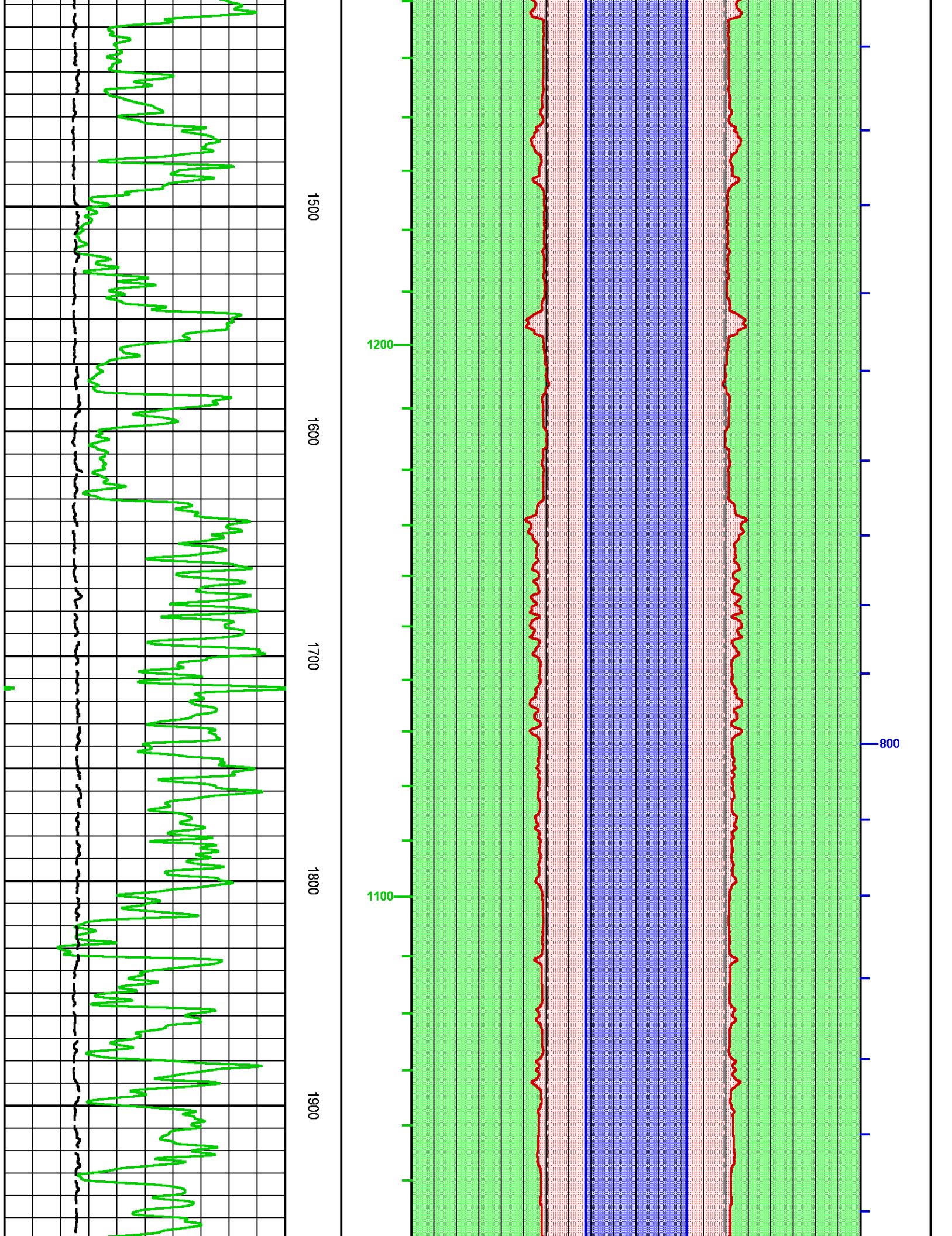
Well : SHAVETAIL FEDERAL 28-44  
Field : WILDCAT  
File Interval : 190 - 4744 Feet  
OCT : CYNO



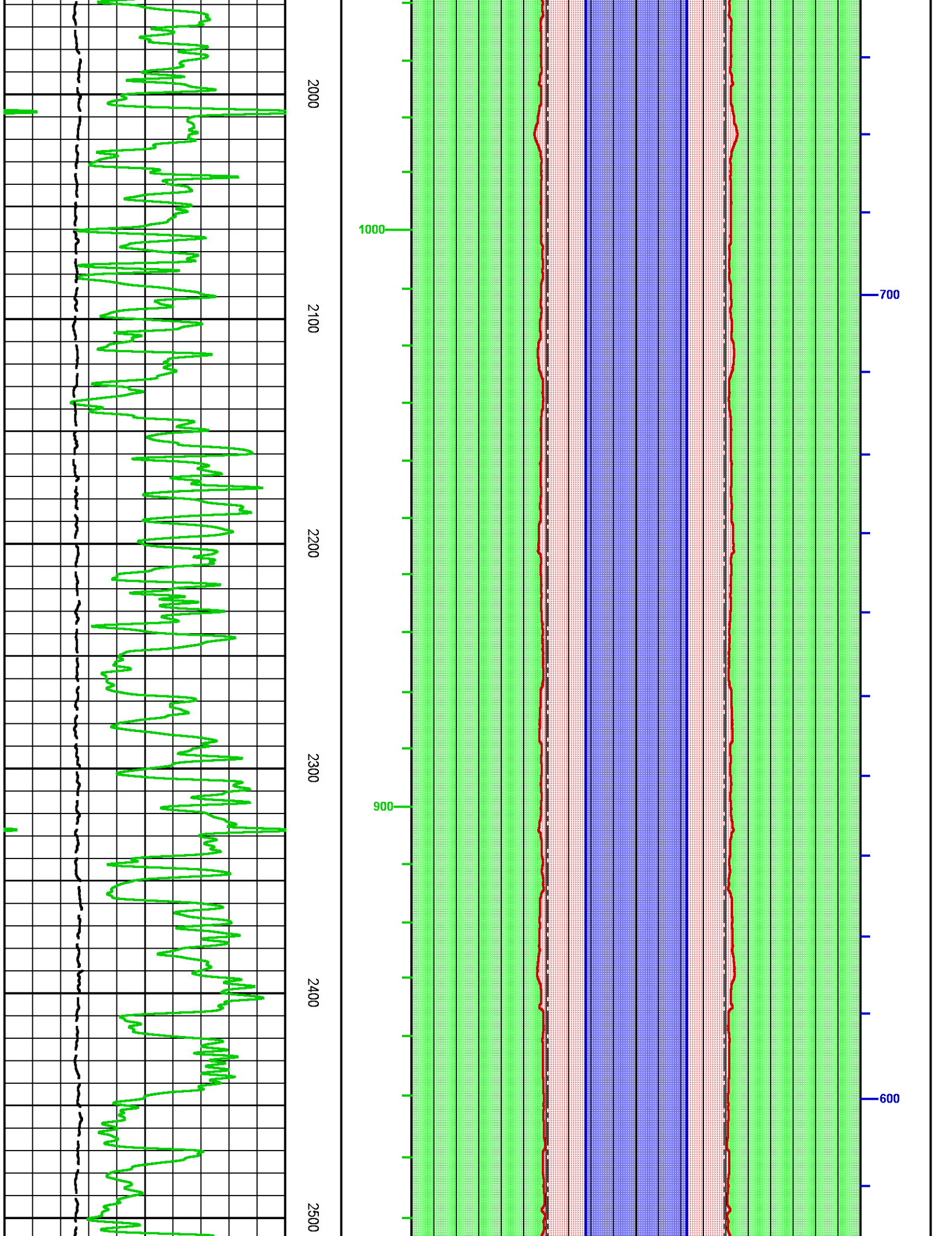




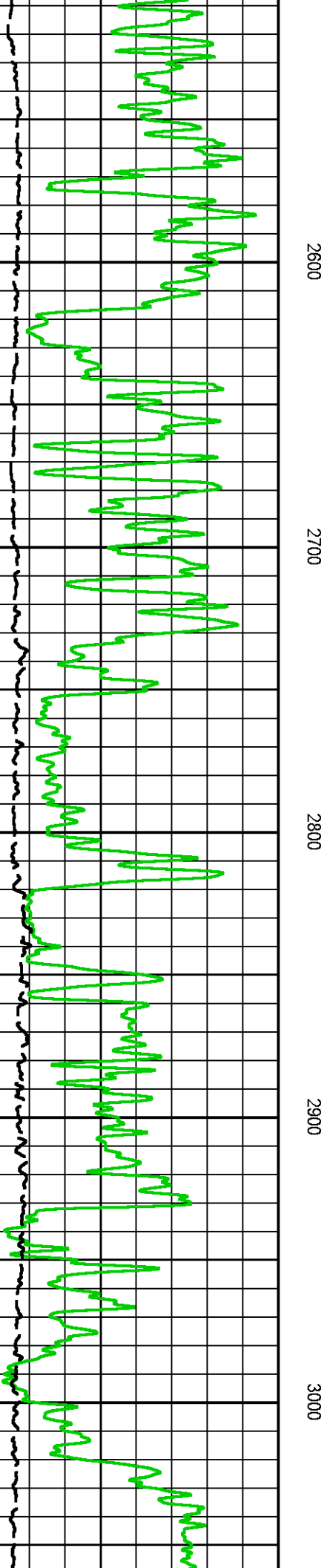
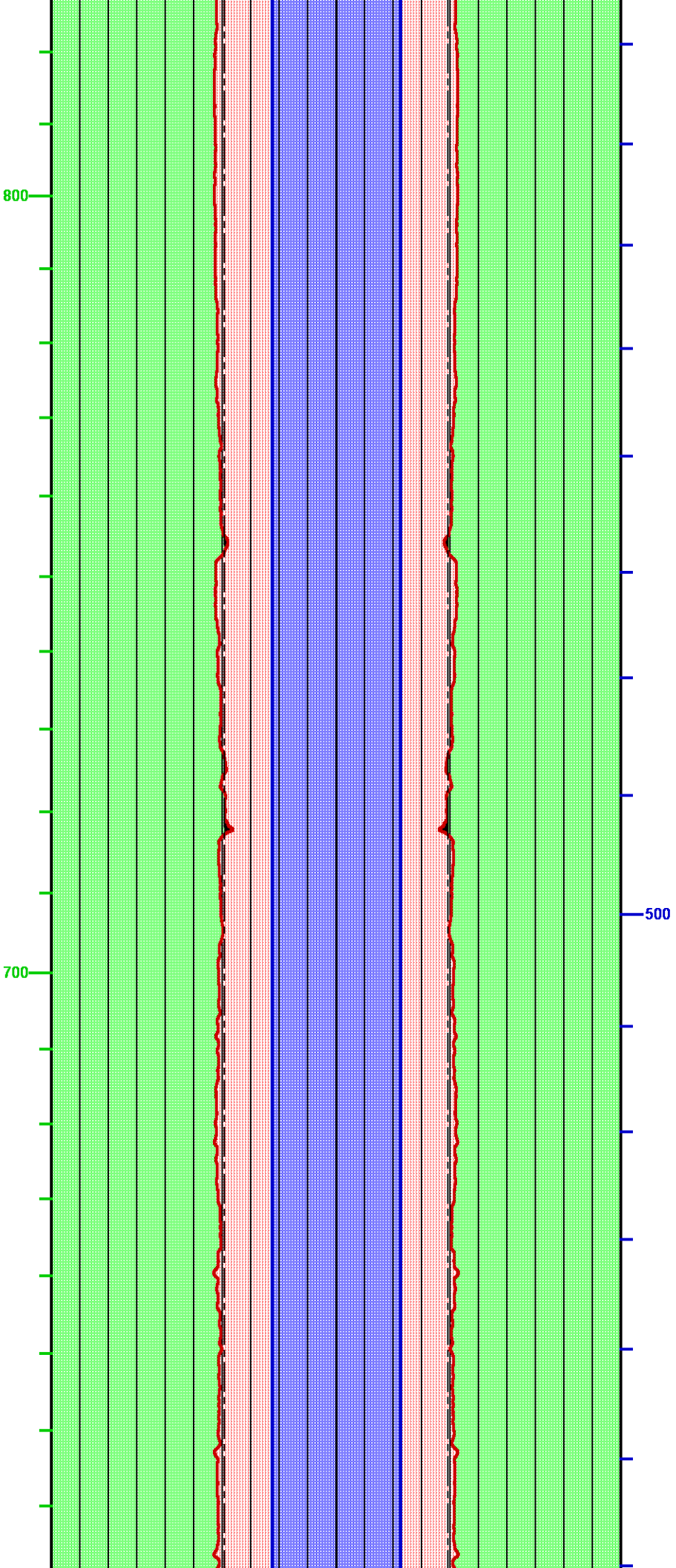




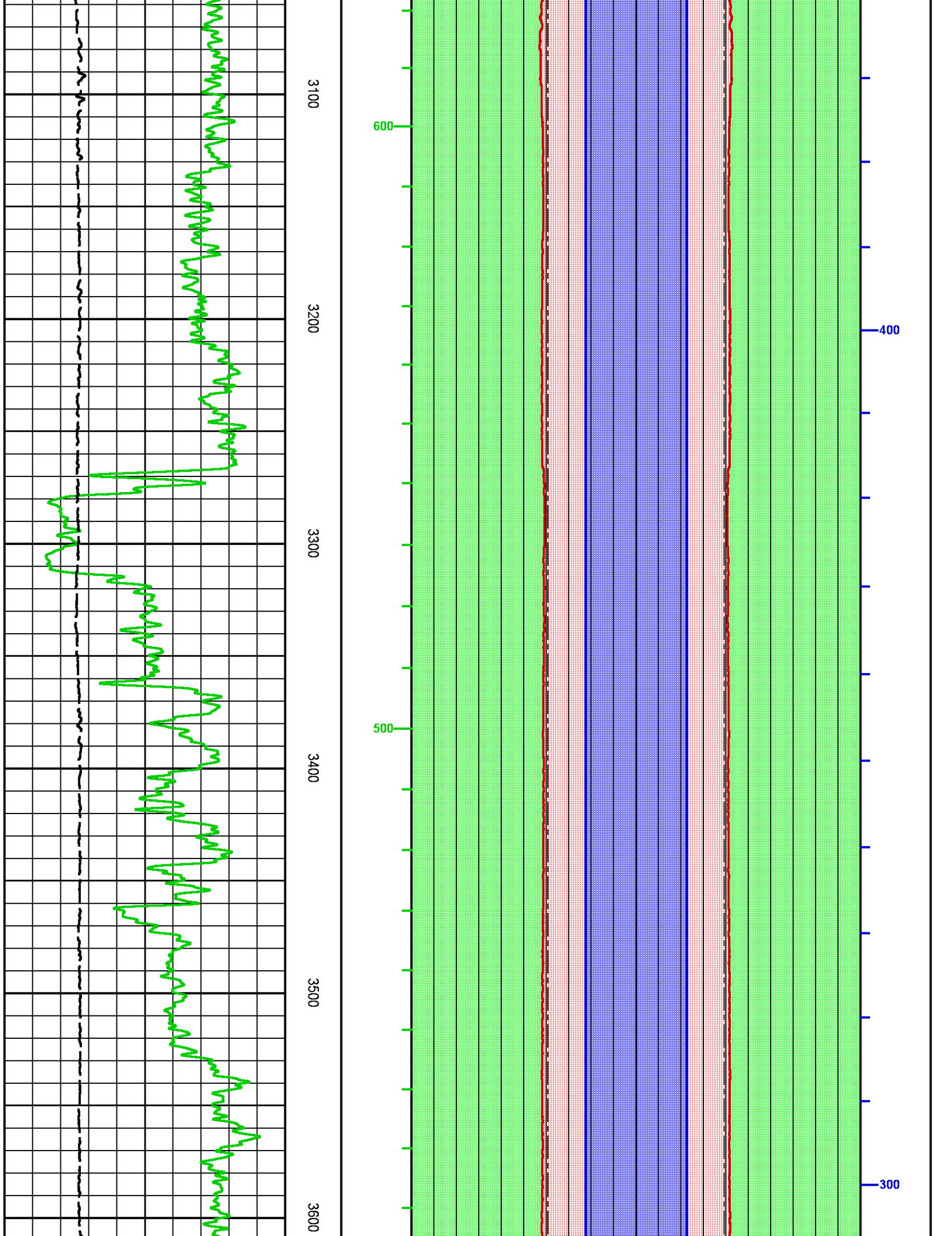




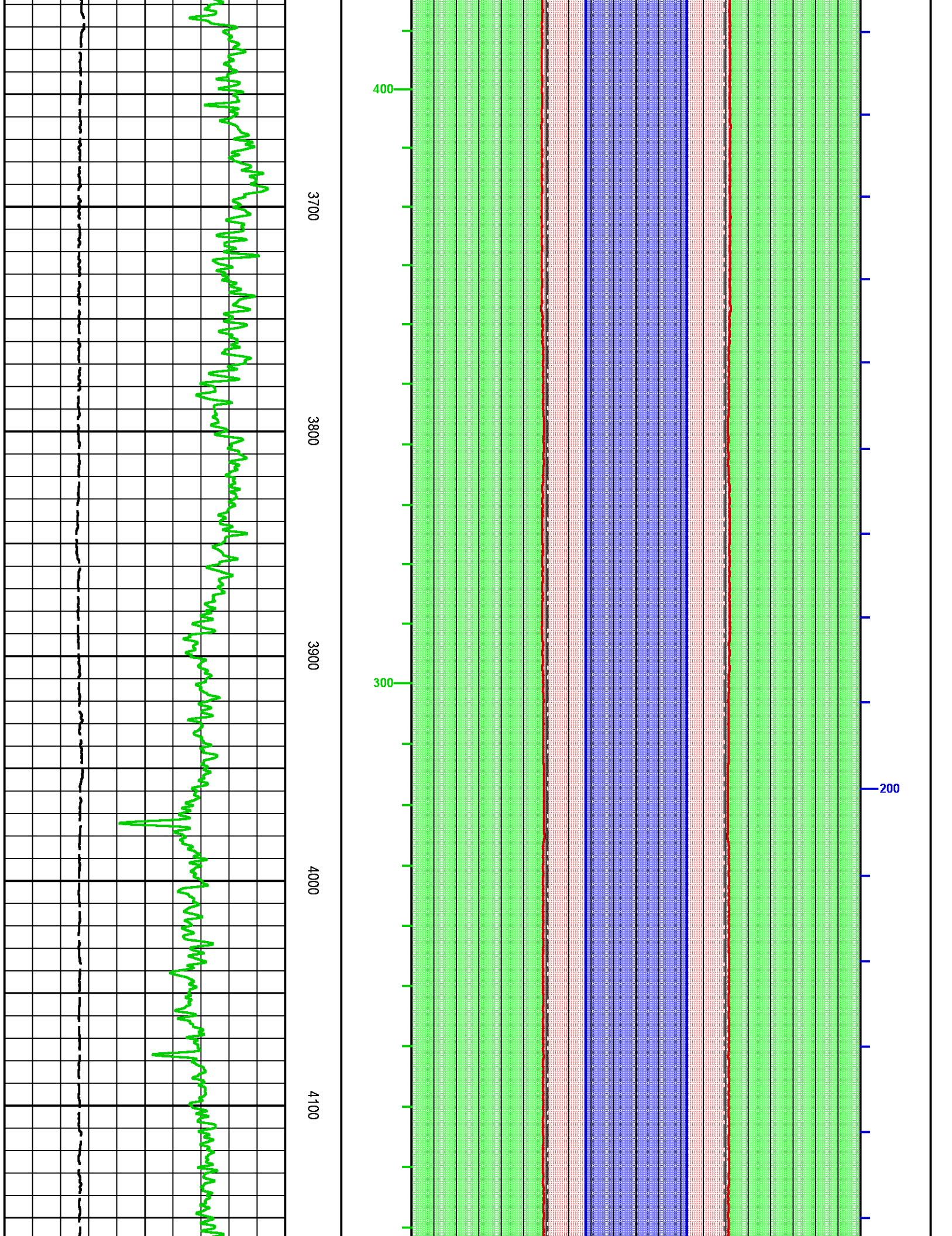




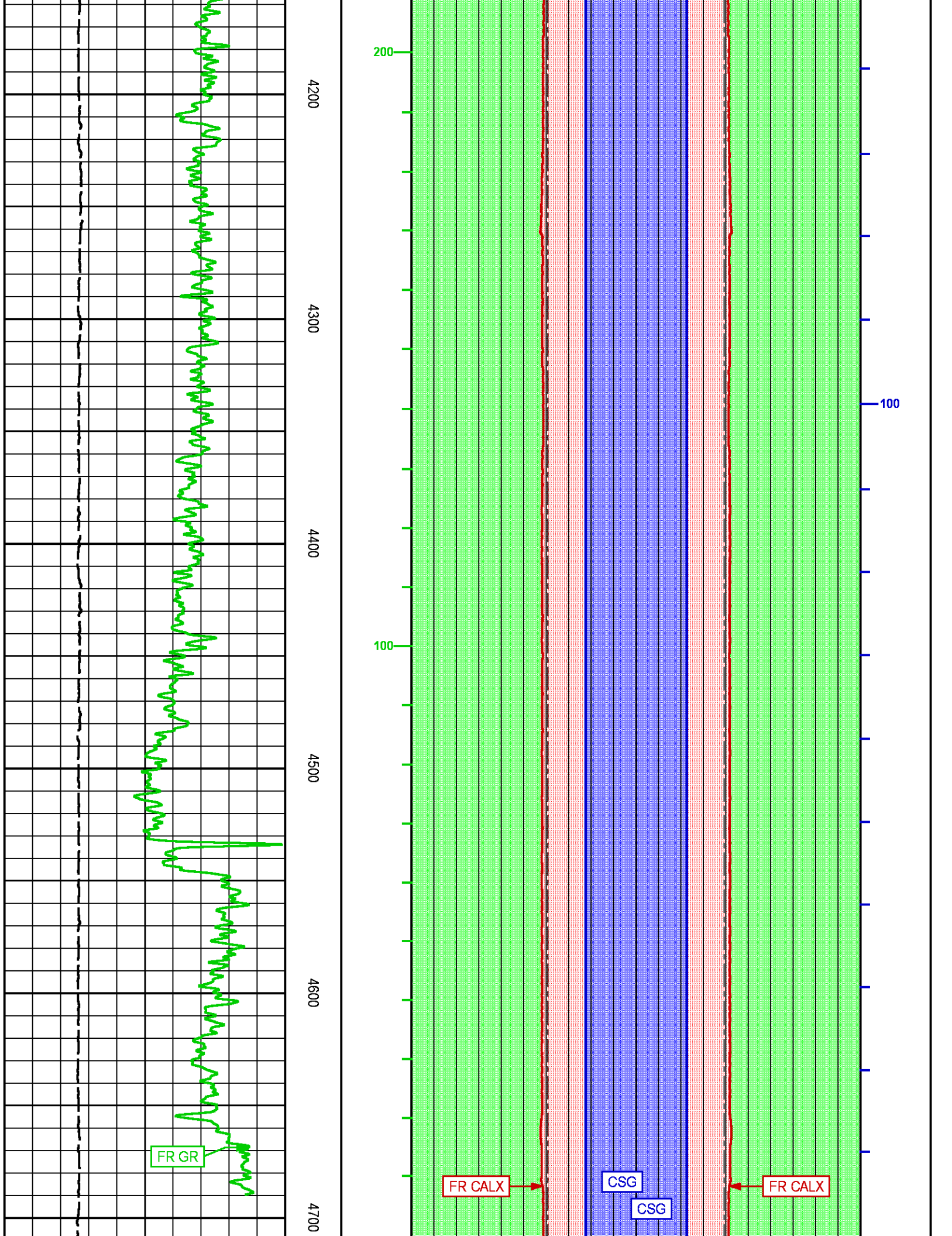




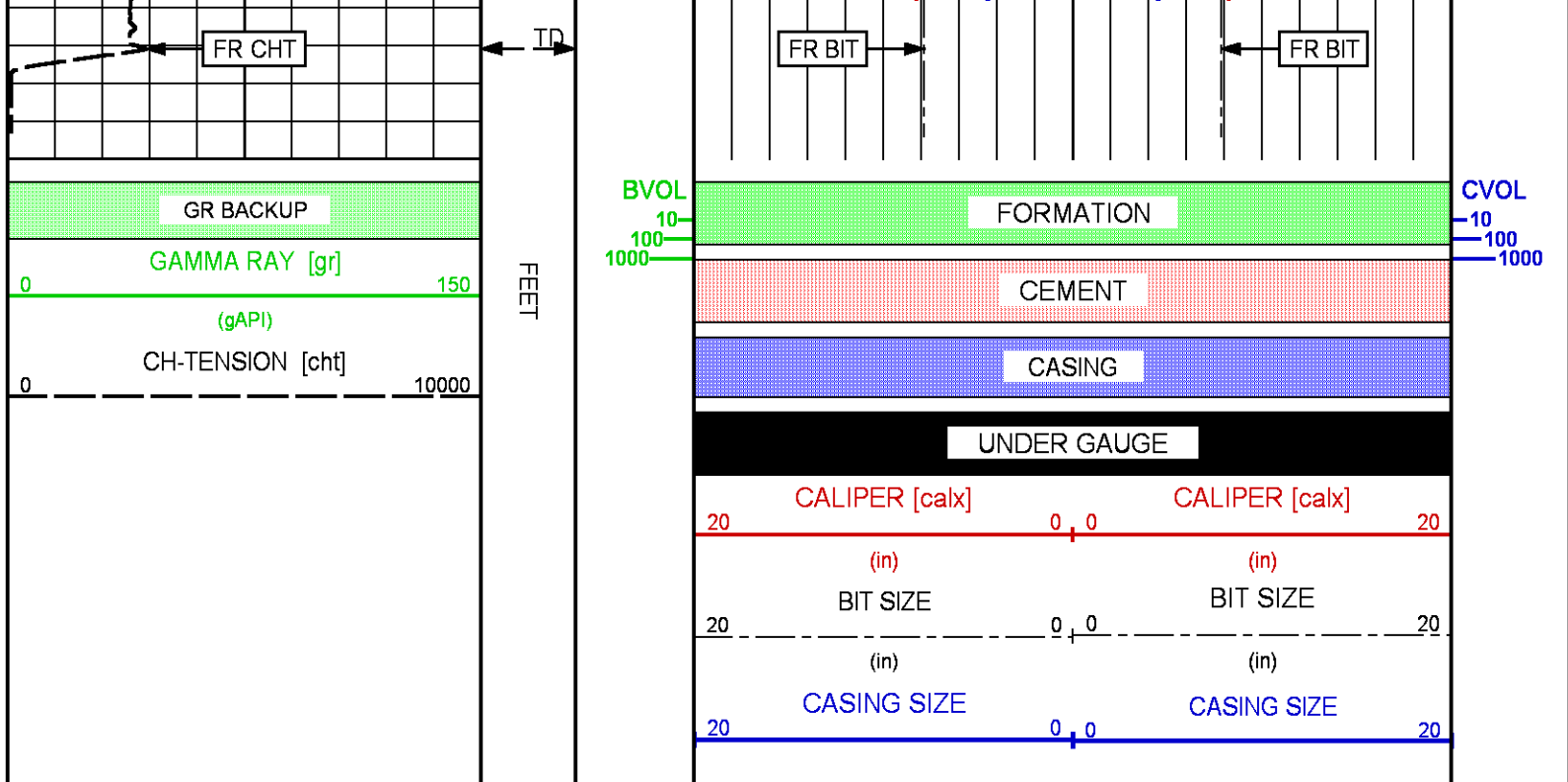













	<b>COMPANY</b> <u>COACHMAN ENERGY OPERATING COMPANY</u> <b>WELL</b> <u>SHAVETAIL FEDERAL 28-44</u> <b>FIELD</b> <u>WILDCAT</u> <b>COUNTY</b> <u>RIO BLANCO</u> <b>STATE</b> <u>COLORADO</u>	<b>FILE NO:</b> <u>MD11429</u> <b>API NO:</b> <u>05-103-12274</u>	
	<b>LOCATION:</b> <u>1381' FSL &amp; 380' FEL</u>	<b>ELEVATIONS:</b> KB <u>5601 FT</u> DF <u>5600 FT</u> GL <u>5590 FT</u>	<b>FINAL PRINT</b>
	<b>SEC</b> <u>28</u> <b>TWP</b> <u>1N</u> <b>RGE</b> <u>103W</u>	<b>DATE</b> <u>26-AUG-2015</u>	