

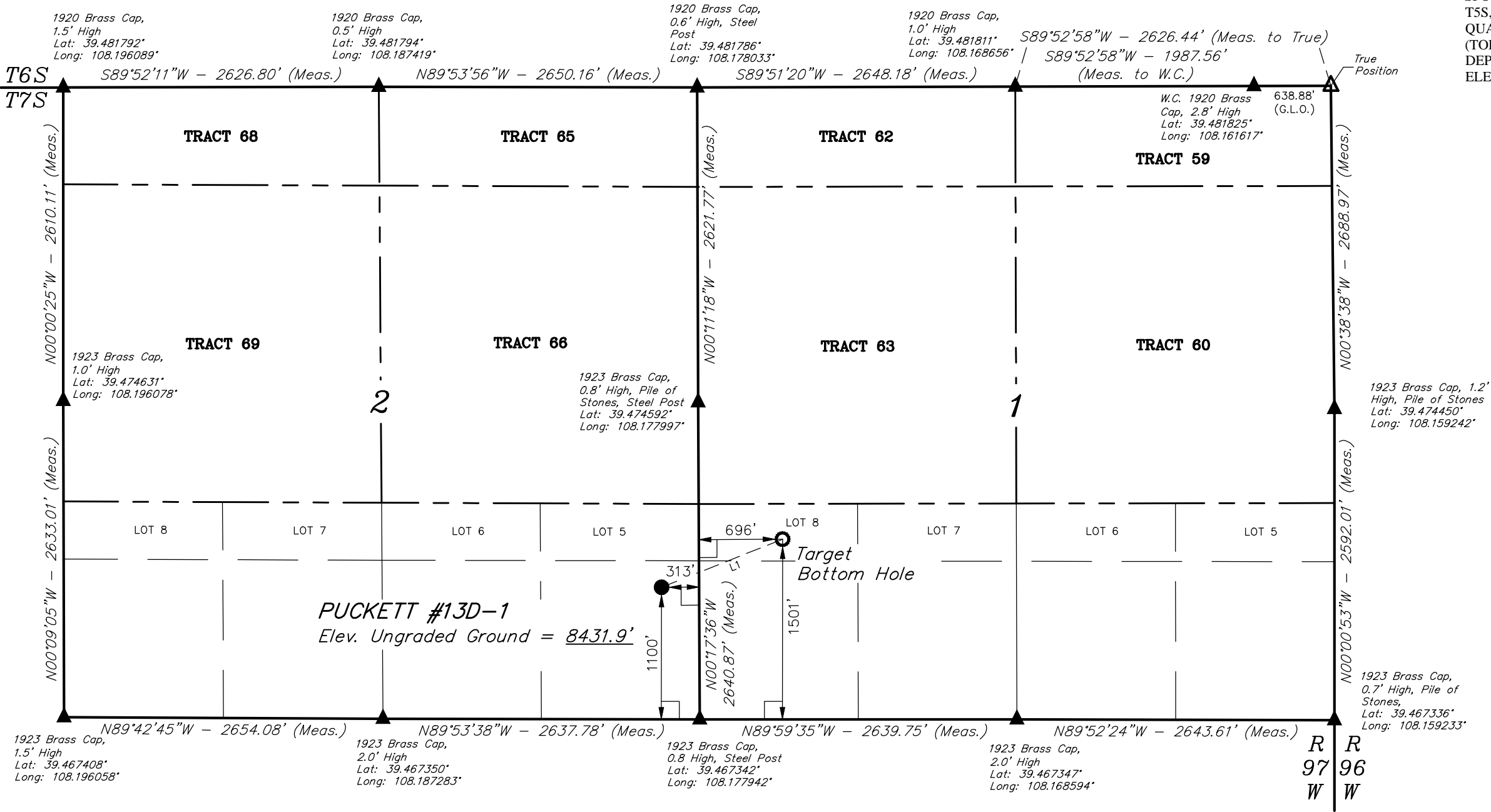
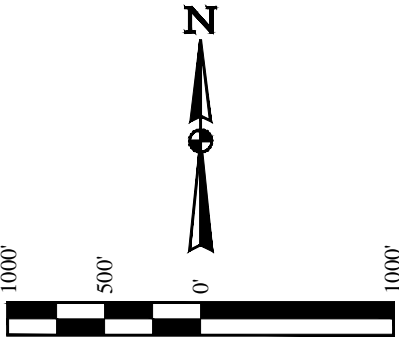
T7S, R97W, 6th P.M.

Caerus Oil & Gas LLC

PUCKETT #13D-1  
SE 1/4 SE 1/4, SECTION 2, T7S, R97W, 6th P.M.  
GARFIELD COUNTY, COLORADO

BASIS OF BEARINGS  
BASIS OF ELEVATION

SPOT ELEVATION AT THE NORTHWEST CORNER OF SECTION 30, T5S, R95W, 6th P.M. TAKEN FROM THE FORKED GULCH QUADRANGLE, COLORADO, GARFIELD COUNTY, 7.5 MINUTE SERIES (TOPOGRAPHICAL MAP) PUBLISHED BY THE UNITED STATES DEPARTMENT OF THE INTERIOR, GEOLOGICAL SURVEY. SAID ELEVATION IS MARKED AS BEING 5966 FEET.



LINE TABLE		
LINE	DIRECTION	LENGTH
L1	N68°18'25"E	1083.72'

- LEGEND:
- 90° SYMBOL
  - PROPOSED WELLHEAD.
  - TARGET BOTTOM HOLE.
  - SECTION CORNERS LOCATED.
  - SECTION CORNERS RE-ESTABLISHED.  
(Not Set on Ground.)

PDOP = 1.5

NAD 83 (TARGET BOTTOM HOLE)	NAD 83 (SURFACE LOCATION)
LATITUDE = 39°28'17.27" (39.471464)	LATITUDE = 39°28'13.31" (39.470364)
LONGITUDE = 108°10'31.83" (108.175508)	LONGITUDE = 108°10'44.66" (108.179072)
NAD 27 (TARGET BOTTOM HOLE)	NAD 27 (SURFACE LOCATION)
LATITUDE = 39°28'17.35" (39.470417)	LATITUDE = 39°28'13.38" (39.470383)
LONGITUDE = 108°10'29.54" (108.174872)	LONGITUDE = 108°10'42.37" (108.178436)
UTM NAD 27 ZONE 12	UTM NAD 27 ZONE 12
N: 14346105.00 E: 2437745.80	N: 14345672.29 E: 2436752.17



UELS, LLC  
Corporate Office \* 85 South 200 East  
Vernal, UT 84078 \* (435) 789-1017

SURVEYED BY: BRADEN BOX, J.C.		DATE: 08-21-14
DRAWN BY: M.D.		DATE DRAWN: 09-16-14
SCALE: 1" = 1000'		REVISED: 10-15-15 M.O.E.

WELL LOCATION PLAT