



October 14, 2015

VIA ELECTRONIC TRANSMITTAL

Director Matt Lepore
Colorado Oil and Gas Conservation Commission
1120 Lincoln Street Suite 801
Denver, Colorado 80203

RE: Rule 318.A.e.
TC Hiland Knolls 1-9-11
TC Hiland Knolls C6-9-11
TC Hiland Knolls 2-9-11
TC Hiland Knolls 3-9-11
TC Hiland Knolls C7-9-11
TC Hiland Knolls 4-9-11

Surface Location: SENE & NESE, Section 8, Township 5 North, Range 66 West, Weld County, CO

Dear Mr. Lepore,

Extraction Oil and Gas is planning to drill the captioned horizontal wells in accordance with the provision of COGCC Rule 318A.e.

The proposed wellbore spacing unit consists of:

Sec.9-5N-66W: S/2
Sec.10-5N-66W: S/2
Sec.11-5N-66W: SW/4

The spacing unit is an 800-acre wellbore spacing unit for the Niobrara and Codell formations.

Extraction Oil and Gas hereby certifies to the Director that all Owners within the proposed spacing unit above were notified and 30 days have passed without objection.

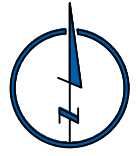
If you have any questions or issues regarding this permit, please contact Alyssa Andrews at 720-420-5749.

Respectfully,

Alyssa Andrews
Agent for Extraction Oil and Gas

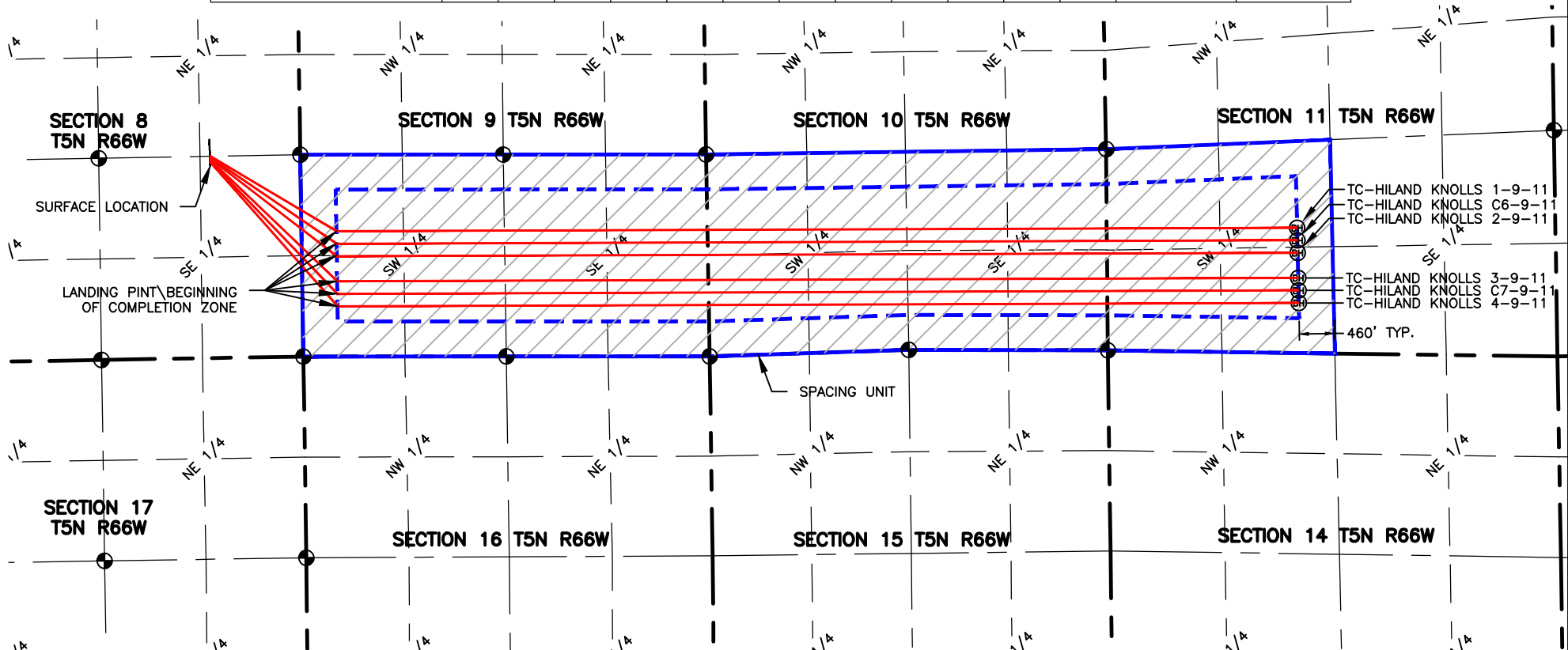
P:\Engineering\0213054.01\DRAWINGS\EXHIBITS\0213054-01PSUE-HIK.dwg, 8/5/2015 2:08:46 PM, KELVIN WIESE, LAMP RYNEARSON & ASSOCIATES

NAME: HILAND KNOLLS
SPACING UNIT: S/2 SEC 9; S/2 SEC 10; SW/4 SEC 11; T5N, R66W;
UNIT ACREAGE: 800



2000 0
SCALE: 1"= 2000'
U.S. SURVEY FEET

| WELL NAME | SURFACE LOCATION | | | | LANDING POINT\BEGIN HORIZONTAL COMPLETION ZONE | | | | BOTTOM HOLE\END HORIZONTAL COMPLETION ZONE | | | | COMPLETION ZONE BEARING | COMPLETION ZONE LENGTH |
|--------------------------|------------------|------|-------|------|--|------|-------|------|--|------|-------|------|-------------------------|------------------------|
| | DIST. | DIR. | DIST. | DIR. | DIST. | DIR. | DIST. | DIR. | DIST. | DIR. | DIST. | DIR. | | |
| TC-HILAND KNOLLS 1-9-11 | 2638' | FNL | 1191' | FEL | 1650' | FSL | 460' | FWL | 1649' | FSL | 2505' | FWL | N89°47'44"E | 12650.43' |
| TC-HILAND KNOLLS C6-9-11 | 2648' | FSL | 1190' | FEL | 1485' | FSL | 460' | FWL | 1484' | FSL | 2507' | FWL | N89°47'44"E | 12651.63' |
| TC-HILAND KNOLLS 2-9-11 | 2632' | FSL | 1190' | FEL | 1320' | FSL | 460' | FWL | 1319' | FSL | 2509' | FWL | N89°47'44"E | 12652.83' |
| TC-HILAND KNOLLS 3-9-11 | 2616' | FSL | 1190' | FEL | 990' | FSL | 460' | FWL | 989' | FSL | 2514' | FWL | N89°47'44"E | 12655.23' |
| TC-HILAND KNOLLS C7-9-11 | 2600' | FSL | 1189' | FEL | 825' | FSL | 460' | FWL | 825' | FSL | 2516' | FWL | N89°47'44"E | 12656.43' |
| TC-HILAND KNOLLS 4-9-11 | 2584' | FSL | 1189' | FEL | 660' | FSL | 460' | FWL | 660' | FSL | 2519' | FWL | N89°47'44"E | 12657.63' |



LAMP RYNEARSON
& ASSOCIATES

4715 Innovation Drive 970.226.0342 | P
Fort Collins, CO 80525 970.226.0879 | F
www.LRA-Inc.com

Proposed Spacing Unit Exhibit
Triple Creek Directional
Hiland Knolls

- LEGEND**
- ALIQUOT CORNER
 - BOTTOM HOLE
 - COMPUTED ALIQUOT CORNER
 - SECTION LINE
 - QUARTER SECTION LINE
 - SIXTEENTH LINE

| | | | | |
|-----------------|----------------|--------------------|-------------------------------------|---------------|
| drawn by KJW | date 8/5/15 | cogcc id 436824 | project - task number 0213054.01 | book and page |
|-----------------|----------------|--------------------|-------------------------------------|---------------|

surface - location
SE/4, NE/4 & NE/4, SE/4,
SEC 8 T5N R66W