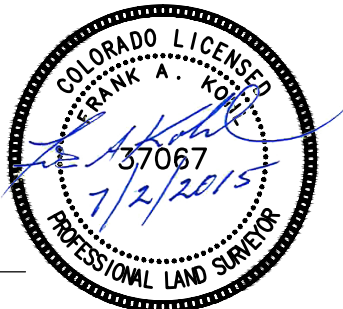


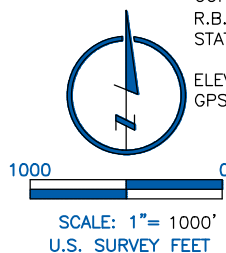
#### LAND SURVEYOR'S CERTIFICATION

LAMP, RYNEARSON & ASSOCIATES, INC., OF FT. COLLINS, COLORADO HAS, IN ACCORDANCE WITH A REQUEST FROM DUSTIN DYK AT EXTRACTION OIL & GAS, DETERMINED THE SURFACE LOCATION OF THE WELL DESIGNATED AS TC-HILAND KNOLLS C7-9-11 TO BE 2600' FROM THE SOUTH LINE AND 1189' FROM THE EAST LINE OF SECTION 8, TOWNSHIP 5 NORTH, RANGE 66 WEST OF THE 6TH P.M., WELD COUNTY, COLORADO.



FRANK A. KOHL  
 COLORADO PLS 37067

DATE OF SURVEY: 9/18/2013 AND 12/10/13 (SECTION CONTROL)  
 DATE OF SURVEY: 2/21/2014 (WELL LOCATION)



#### BASIS OF BEARING:

THE NORTH LINE OF THE NORTHEAST QUARTER OF SECTION 8-T5N-R66W BEARS N89°02'43"E BETWEEN THE NORTH QUARTER CORNER OF SECTION 8 MONUMENTED WITH 3 1/4" A.C. IN R.B. STAMPED "PLS 25381" AND THE NORTHEAST CORNER OF SECTION 8 MONUMENTED WITH A 3 1/4" A.C. IN R.B. "LS 22098" BASED ON THE COLORADO NORTH 0501 STATE PLANE COORDINATE SYSTEM.

ELEVATIONS ARE BASED ON NAVD 88, AS OBSERVED FROM GPS OBSERVATIONS

#### LEGEND

- ALIQUOT CORNER A.C. ALUMINUM CAP
- ⊙ BOTTOM HOLE R.B. RANGE BOX
- PROPOSED WELL



**LAMP RYNEARSON**  
 & ASSOCIATES

4715 Innovation Drive 970.226.0342 | P  
 Fort Collins, CO 80525 970.226.0879 | F  
 www.LRA-Inc.com

Proposed Well Location Exhibit  
 TC-Hiland Knolls C7-9-11  
 1 of 4

drawn by  
 KJW

date  
 07/02/15

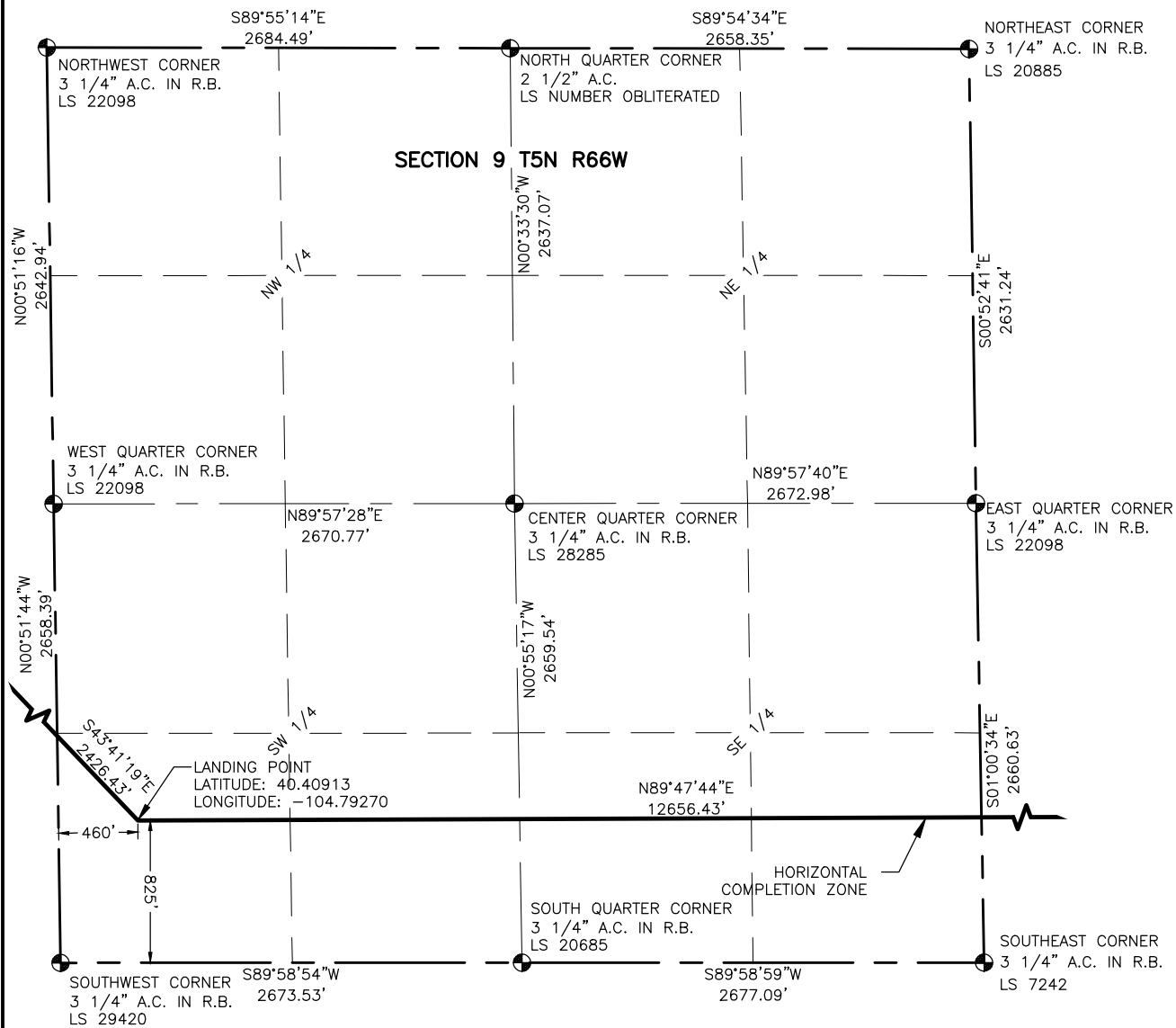
cogcc id  
 436824

project - task number  
 0213054.01

book and page

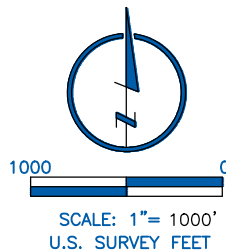
surface - location  
 NE/4, SE/4, SEC 8 T5N R66W

path/filename P:\\_Engineering\0213054.01\DRAWINGS\EXHIBITS\0213054-01EXWPC25.dwg



#### LEGEND

- ALIQUOT CORNER
- BOTTOM HOLE
- PROPOSED WELL
- A.C. ALUMINUM CAP
- R.B. RANGE BOX



#### NOTES:

1. DISTANCES ARE MEASURED PERPENDICULAR TO NEAREST SECTION LINE AND ARE SHOWN ON THE SAME SIDE OF THE SECTION LINE WHERE THE WELL IS LOCATED.
2. THIS MAP DOES NOT REPRESENT A MONUMENTED BOUNDARY SURVEY. SIXTEENTH CORNER LOCATIONS ARE COMPUTED, UNLESS OTHERWISE NOTED.
3. BOTTOM HOLE LOCATIONS AND HORIZONTAL COMPLETION ZONE PROVIDED BY OTHERS.



**LAMP RYNEARSON**  
& ASSOCIATES

4715 Innovation Drive 970.226.0342 | P  
Fort Collins, CO 80525 970.226.0879 | F  
www.LRA-Inc.com

Proposed Well Location Exhibit  
TC-Hiland Knolls C7-9-11  
2 of 4

drawn by

KJW

date

07/02/15

cogcc id

436824

project - task number

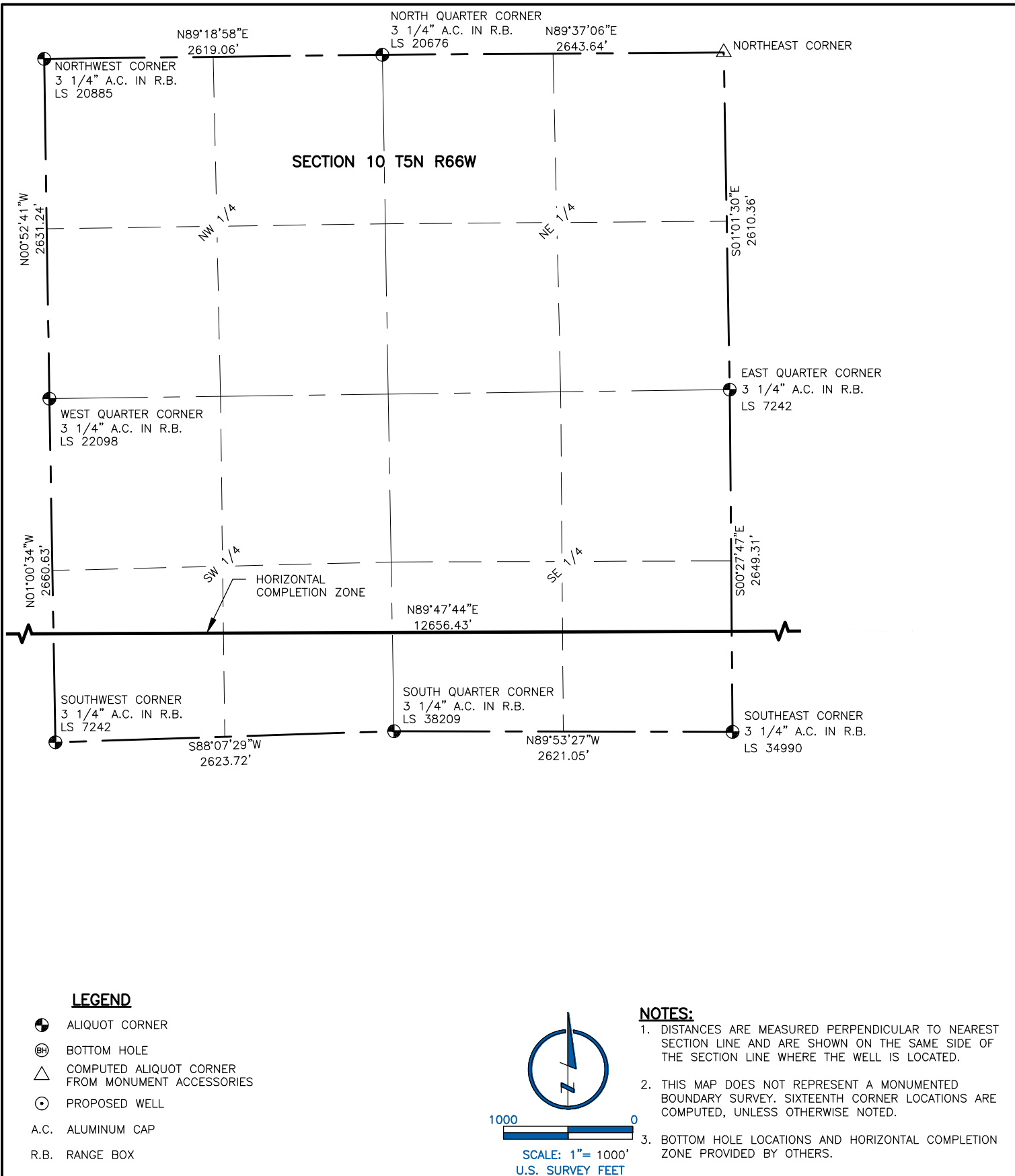
0213054.01

book and page

path/filename P:\\_Engineering\0213054.01\DRAWINGS\EXHIBITS\0213054-01EXWPC26.dwg

surface - location

NE/4, SE/4, SEC 8 T5N R66W



**LAMP RYNEARSON**  
& ASSOCIATES

4715 Innovation Drive 970.226.0342 | P  
Fort Collins, CO 80525 970.226.0879 | F  
www.LRA-Inc.com

Proposed Well Location Exhibit  
TC-Hiland Knolls C7-9-11  
3 of 4

drawn by  
KJW

date  
07/02/15

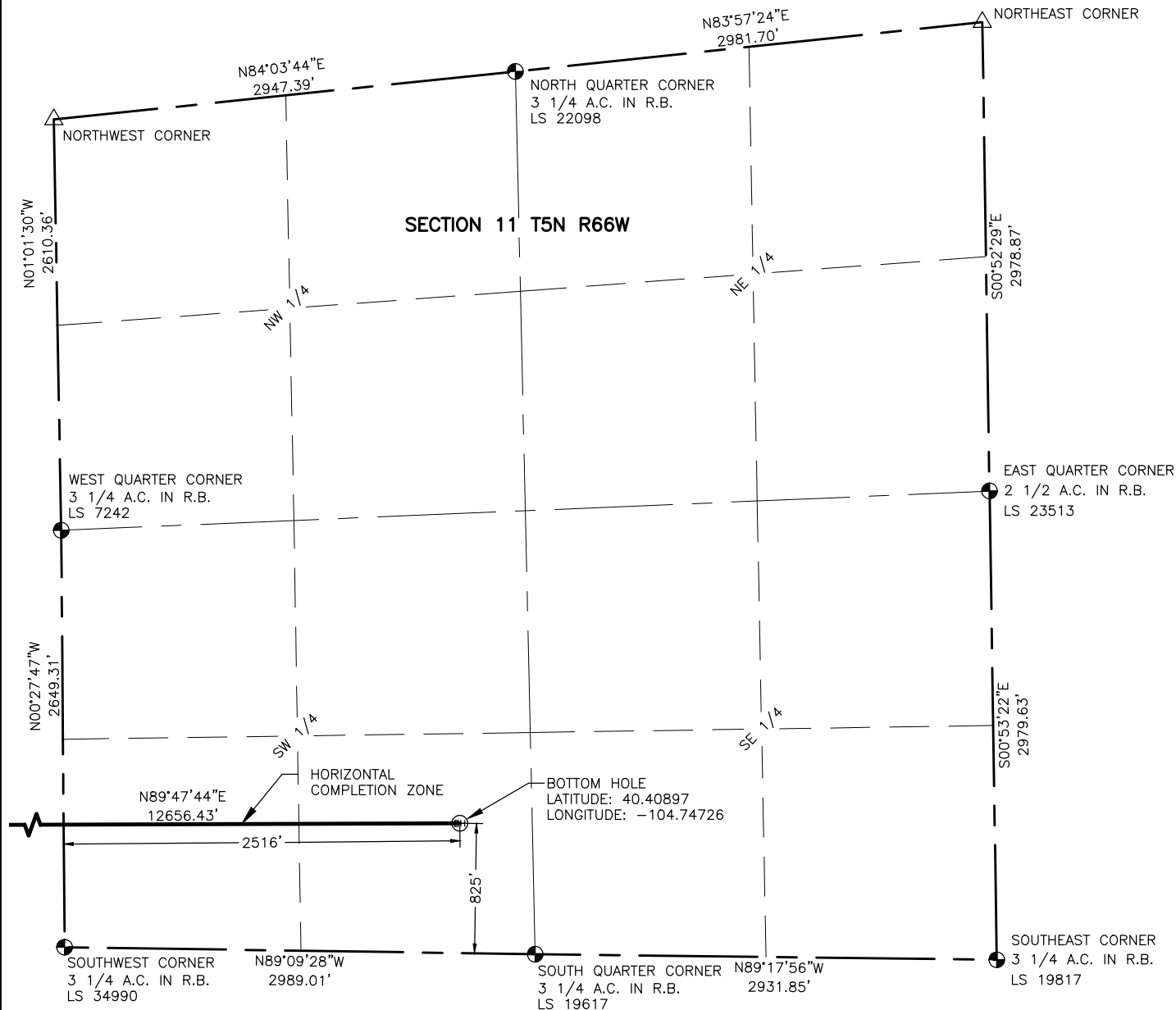
cogcc id  
436824

project - task number  
0213054.01

book and page

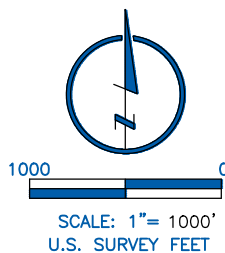
surface - location  
NE/4, SE/4, SEC 8 T5N R66W

path\filename P:\\_Engineering\0213054.01\DRAWINGS\EXHIBITS\0213054-01EXWPC27.dwg



#### LEGEND

- ALIQUOT CORNER
- ⊙ BOTTOM HOLE
- △ COMPUTED ALIQUOT CORNER FROM MONUMENT ACCESSORIES
- PROPOSED WELL
- A.C. ALUMINUM CAP
- R.B. RANGE BOX



#### NOTES:

1. DISTANCES ARE MEASURED PERPENDICULAR TO NEAREST SECTION LINE AND ARE SHOWN ON THE SAME SIDE OF THE SECTION LINE WHERE THE WELL IS LOCATED.
2. THIS MAP DOES NOT REPRESENT A MONUMENTED BOUNDARY SURVEY. SIXTEENTH CORNER LOCATIONS ARE COMPUTED, UNLESS OTHERWISE NOTED.
3. BOTTOM HOLE LOCATIONS AND HORIZONTAL COMPLETION ZONE PROVIDED BY OTHERS.



**LAMP RYNEARSON**  
& ASSOCIATES

4715 Innovation Drive 970.226.0342 | P  
Fort Collins, CO 80525 970.226.0879 | F  
www.LRA-Inc.com

Proposed Well Location Exhibit  
TC-Hiland Knolls C7-9-11  
4 of 4

drawn by

KJW

date

07/02/15

cogcc id

436824

project - task number

0213054.01

book and page

surface - location

NE/4, SE/4, SEC 8 T5N R66W

path\filename P:\\_Engineering\0213054.01\DRAWINGS\EXHIBITS\0213054-01EXWPC27A.dwg