



Bill Barrett Corporation

Bill Barrett Corp.

Weld Co., CO

Sec.9-T4N-R62W

Anschutz Eq Farms 4-62-9-3225D2

Wellbore #1

Plan: Design #1

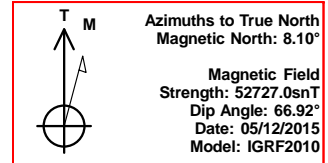
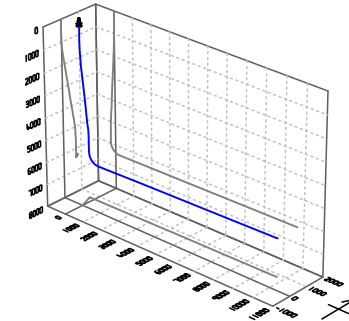
Standard Planning Report

12 May, 2015



Bill Barrett Corp.
Project: Weld Co., CO
Site: Sec.9-T4N-R62W
Well: Anschutz Eq Farms 4-62-9-3225D2
Wellbore: Wellbore #1
Design: Design #1
Lat: 40° 19' 33.229 N
Long: 104° 20' 18.668 W
Pad GL: 4528.00
KB: Well @ 4544.00usft

Archer



SECTION DETAILS

MD	Inc	Azi	TVD	+N/-S	+E/-W	Dleg	TFace	VSec	Annotation
0.00	0.00	0.00	0.00	0.00	0.00	0.00	0.00	0.00	
900.00	0.00	0.00	900.00	0.00	0.00	0.00	0.00	0.00	Start Build 2.00
1432.25	10.64	339.47	1429.19	46.17	-17.29	2.00	339.47	-16.80	Start 3524.82 hold at 1432.25 MD
4957.07	10.64	339.47	4893.35	655.91	-245.68	0.00	0.00	-238.68	Start Drop -2.00
5489.31	0.00	0.00	5422.54	702.08	-262.97	2.00	180.00	-255.48	Start 500.03 hold at 5489.31 MD
5989.34	0.00	0.00	5922.57	702.08	-262.97	0.00	0.00	-255.48	Start Build 12.00
6744.69	90.64	89.39	6400.00	707.19	219.82	12.00	89.39	227.33	Start 9462.00 hold at 6744.69 MD
16206.69	90.64	89.39	6294.00	807.35	9680.69	0.00	0.00	9688.74	TD at 16206.69

WELL DETAILS: Anschutz Eq Farms 4-62-9-3225D2

+N/-S	+E/-W	Northing	Ground Level: Easting	4528.00 Latitude	40° 19' 33.229 N Longitude	104° 20' 18.668 W Slot
0.00	0.00	1363685.921	3323828.817			

PROJECT DETAILS: Weld Co., CO

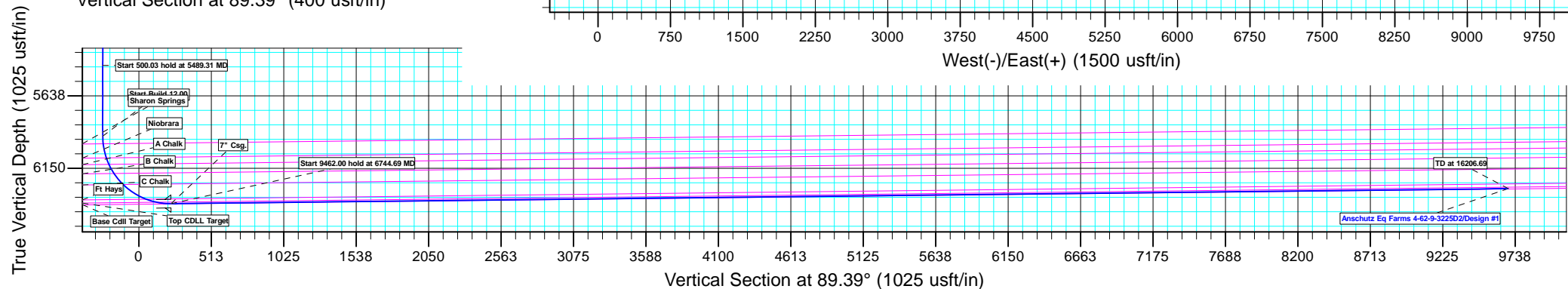
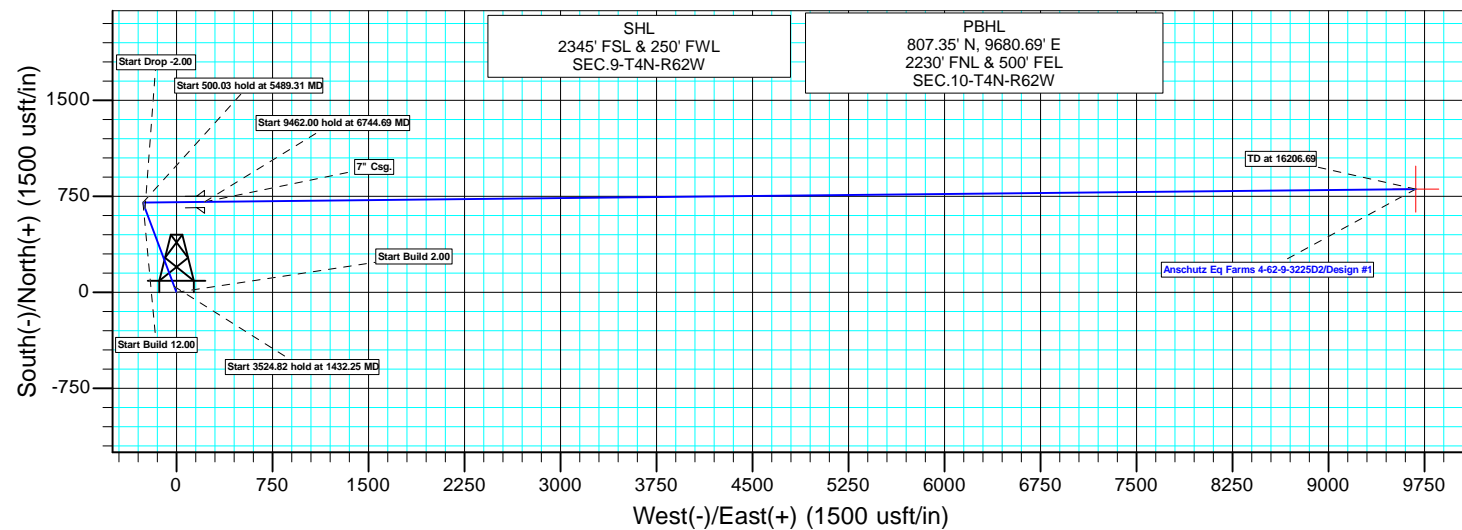
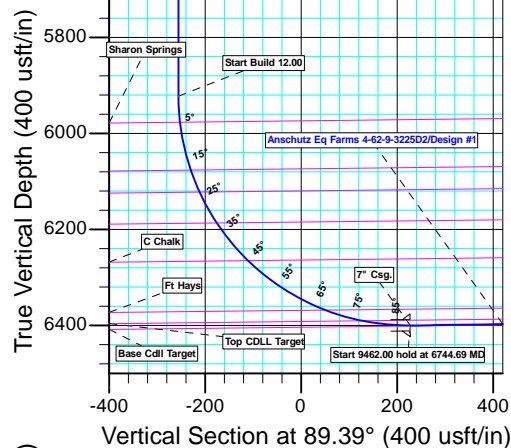
Geodetic System: US State Plane 1983
Datum: North American Datum 1983
Ellipsoid: GRS 1980
Zone: Colorado Northern Zone
System Datum: Mean Sea Level

CASING DETAILS

TVD	MD	Name
6400.00	6744.69	7" Csg.

WELLBORE TARGET DETAILS (LAT/LONG)

Name	TVD	+N/-S	+E/-W	Latitude	Longitude	Shape Point
Anschutz Eq Farms 4-62-9-3225D2 tgt	6294.00	807.35	9680.69	40° 19' 41.189 N	104° 18' 13.669 W	



Plan: Design #1 (Anschutz Eq Farms 4-62-9-3225D2/Wellbore #1)

Created By: Ricky Osburn Date: 14:41, May 12 2015

Database:	EDMDBBW	Local Co-ordinate Reference:	Well Anschutz Eq Farms 4-62-9-3225D2
Company:	Bill Barrett Corp.	TVD Reference:	Well @ 4544.00usft
Project:	Weld Co., CO	MD Reference:	Well @ 4544.00usft
Site:	Sec.9-T4N-R62W	North Reference:	True
Well:	Anschutz Eq Farms 4-62-9-3225D2	Survey Calculation Method:	Minimum Curvature
Wellbore:	Wellbore #1		
Design:	Design #1		

Project	Weld Co., CO		
Map System:	US State Plane 1983	System Datum:	Mean Sea Level
Geo Datum:	North American Datum 1983		
Map Zone:	Colorado Northern Zone		

Site		Sec.9-T4N-R62W			
Site Position:		Northing:	1,361,884.480 usft	Latitude:	40° 19' 15.341 N
From:	Lat/Long	Easting:	3,324,505.224 usft	Longitude:	104° 20' 10.241 W
Position Uncertainty:	0.00 usft	Slot Radius:	13-3/16 "	Grid Convergence:	0.75 °

Well	Anschutz Eq Farms 4-62-9-3225D2					
Well Position	+N/-S	1,810.16 usft	Northing:	1,363,685.921 usft	Latitude:	40° 19' 33.229 N
	+E/-W	-652.71 usft	Easting:	3,323,828.817 usft	Longitude:	104° 20' 18.668 W
Position Uncertainty		0.00 usft	Wellhead Elevation:	0.00 usft	Ground Level:	4,528.00 usft

Wellbore	Wellbore #1				
Magnetics	Model Name	Sample Date	Declination (°)	Dip Angle (°)	Field Strength (nT)
	IGRF2010	2015/05/12	8.10	66.92	52,727

Design	Design #1			
Audit Notes:				
Version:	Phase:	PLAN	Tie On Depth:	0.00
Vertical Section:	Depth From (TVD) (usft)	+N/-S (usft)	+E/-W (usft)	Direction (°)
	0.00	0.00	0.00	89.39

Plan Sections										
Measured Depth (usft)	Inclination (°)	Azimuth (°)	Vertical Depth (usft)	+N/-S (usft)	+E/-W (usft)	Dogleg Rate (°/100usft)	Build Rate (°/100usft)	Turn Rate (°/100usft)	TFO (°)	Target
0.00	0.00	0.00	0.00	0.00	0.00	0.00	0.00	0.00	0.00	
900.00	0.00	0.00	900.00	0.00	0.00	0.00	0.00	0.00	0.00	
1,432.25	10.64	339.47	1,429.19	46.17	-17.29	2.00	2.00	0.00	339.47	
4,957.07	10.64	339.47	4,893.35	655.91	-245.68	0.00	0.00	0.00	0.00	
5,489.31	0.00	0.00	5,422.54	702.08	-262.97	2.00	-2.00	0.00	180.00	
5,989.34	0.00	0.00	5,922.57	702.08	-262.97	0.00	0.00	0.00	0.00	
6,744.69	90.64	89.39	6,400.00	707.19	219.82	12.00	12.00	0.00	89.39	Anschutz Eq Farms 4
16,206.69	90.64	89.39	6,294.00	807.35	9,680.69	0.00	0.00	0.00	0.00	Anschutz Eq Farms 4

Database:	EDMDBBW	Local Co-ordinate Reference:	Well Anschutz Eq Farms 4-62-9-3225D2
Company:	Bill Barrett Corp.	TVD Reference:	Well @ 4544.00usft
Project:	Weld Co., CO	MD Reference:	Well @ 4544.00usft
Site:	Sec.9-T4N-R62W	North Reference:	True
Well:	Anschutz Eq Farms 4-62-9-3225D2	Survey Calculation Method:	Minimum Curvature
Wellbore:	Wellbore #1		
Design:	Design #1		

Planned Survey									
Measured Depth (usft)	Inclination (°)	Azimuth (°)	Vertical Depth (usft)	+N/-S (usft)	+E/-W (usft)	Vertical Section (usft)	Dogleg Rate (°/100usft)	Build Rate (°/100usft)	Turn Rate (°/100usft)
0.00	0.00	0.00	0.00	0.00	0.00	0.00	0.00	0.00	0.00
100.00	0.00	0.00	100.00	0.00	0.00	0.00	0.00	0.00	0.00
200.00	0.00	0.00	200.00	0.00	0.00	0.00	0.00	0.00	0.00
300.00	0.00	0.00	300.00	0.00	0.00	0.00	0.00	0.00	0.00
400.00	0.00	0.00	400.00	0.00	0.00	0.00	0.00	0.00	0.00
500.00	0.00	0.00	500.00	0.00	0.00	0.00	0.00	0.00	0.00
600.00	0.00	0.00	600.00	0.00	0.00	0.00	0.00	0.00	0.00
700.00	0.00	0.00	700.00	0.00	0.00	0.00	0.00	0.00	0.00
800.00	0.00	0.00	800.00	0.00	0.00	0.00	0.00	0.00	0.00
Start Build 2.00									
900.00	0.00	0.00	900.00	0.00	0.00	0.00	0.00	0.00	0.00
1,000.00	2.00	339.47	999.98	1.63	-0.61	-0.59	2.00	2.00	0.00
1,100.00	4.00	339.47	1,099.84	6.54	-2.45	-2.38	2.00	2.00	0.00
1,200.00	6.00	339.47	1,199.45	14.70	-5.50	-5.35	2.00	2.00	0.00
1,300.00	8.00	339.47	1,298.70	26.11	-9.78	-9.50	2.00	2.00	0.00
1,400.00	10.00	339.47	1,397.47	40.76	-15.27	-14.83	2.00	2.00	0.00
Start 3524.82 hold at 1432.25 MD									
1,432.25	10.64	339.47	1,429.19	46.17	-17.29	-16.80	2.00	2.00	0.00
1,500.00	10.64	339.47	1,495.78	57.89	-21.68	-21.07	0.00	0.00	0.00
1,600.00	10.64	339.47	1,594.06	75.19	-28.16	-27.36	0.00	0.00	0.00
1,700.00	10.64	339.47	1,692.34	92.49	-34.64	-33.65	0.00	0.00	0.00
1,800.00	10.64	339.47	1,790.61	109.78	-41.12	-39.95	0.00	0.00	0.00
1,900.00	10.64	339.47	1,888.89	127.08	-47.60	-46.24	0.00	0.00	0.00
2,000.00	10.64	339.47	1,987.17	144.38	-54.08	-52.54	0.00	0.00	0.00
2,100.00	10.64	339.47	2,085.45	161.68	-60.56	-58.83	0.00	0.00	0.00
2,200.00	10.64	339.47	2,183.73	178.98	-67.04	-65.13	0.00	0.00	0.00
2,300.00	10.64	339.47	2,282.01	196.28	-73.52	-71.42	0.00	0.00	0.00
2,400.00	10.64	339.47	2,380.29	213.58	-80.00	-77.72	0.00	0.00	0.00
2,500.00	10.64	339.47	2,478.57	230.87	-86.48	-84.01	0.00	0.00	0.00
2,600.00	10.64	339.47	2,576.85	248.17	-92.96	-90.31	0.00	0.00	0.00
2,700.00	10.64	339.47	2,675.13	265.47	-99.43	-96.60	0.00	0.00	0.00
2,800.00	10.64	339.47	2,773.41	282.77	-105.91	-102.90	0.00	0.00	0.00
2,900.00	10.64	339.47	2,871.68	300.07	-112.39	-109.19	0.00	0.00	0.00
3,000.00	10.64	339.47	2,969.96	317.37	-118.87	-115.49	0.00	0.00	0.00
3,100.00	10.64	339.47	3,068.24	334.67	-125.35	-121.78	0.00	0.00	0.00
3,200.00	10.64	339.47	3,166.52	351.96	-131.83	-128.08	0.00	0.00	0.00
3,300.00	10.64	339.47	3,264.80	369.26	-138.31	-134.37	0.00	0.00	0.00
3,400.00	10.64	339.47	3,363.08	386.56	-144.79	-140.67	0.00	0.00	0.00
3,500.00	10.64	339.47	3,461.36	403.86	-151.27	-146.96	0.00	0.00	0.00
3,600.00	10.64	339.47	3,559.64	421.16	-157.75	-153.26	0.00	0.00	0.00
3,700.00	10.64	339.47	3,657.92	438.46	-164.23	-159.55	0.00	0.00	0.00
3,800.00	10.64	339.47	3,756.20	455.76	-170.71	-165.85	0.00	0.00	0.00
3,900.00	10.64	339.47	3,854.48	473.05	-177.19	-172.14	0.00	0.00	0.00
4,000.00	10.64	339.47	3,952.75	490.35	-183.67	-178.43	0.00	0.00	0.00
4,100.00	10.64	339.47	4,051.03	507.65	-190.15	-184.73	0.00	0.00	0.00
4,200.00	10.64	339.47	4,149.31	524.95	-196.62	-191.02	0.00	0.00	0.00
4,300.00	10.64	339.47	4,247.59	542.25	-203.10	-197.32	0.00	0.00	0.00
4,400.00	10.64	339.47	4,345.87	559.55	-209.58	-203.61	0.00	0.00	0.00
4,500.00	10.64	339.47	4,444.15	576.85	-216.06	-209.91	0.00	0.00	0.00
4,600.00	10.64	339.47	4,542.43	594.14	-222.54	-216.20	0.00	0.00	0.00
4,700.00	10.64	339.47	4,640.71	611.44	-229.02	-222.50	0.00	0.00	0.00
Shannon									
4,754.76	10.64	339.47	4,694.52	620.92	-232.57	-225.95	0.00	0.00	0.00

Database:	EDMDBBW	Local Co-ordinate Reference:	Well Anschutz Eq Farms 4-62-9-3225D2
Company:	Bill Barrett Corp.	TVD Reference:	Well @ 4544.00usft
Project:	Weld Co., CO	MD Reference:	Well @ 4544.00usft
Site:	Sec.9-T4N-R62W	North Reference:	True
Well:	Anschutz Eq Farms 4-62-9-3225D2	Survey Calculation Method:	Minimum Curvature
Wellbore:	Wellbore #1		
Design:	Design #1		

Planned Survey									
Measured Depth (usft)	Inclination (°)	Azimuth (°)	Vertical Depth (usft)	+N/-S (usft)	+E/-W (usft)	Vertical Section (usft)	Dogleg Rate (°/100usft)	Build Rate (°/100usft)	Turn Rate (°/100usft)
4,800.00	10.64	339.47	4,738.99	628.74	-235.50	-228.79	0.00	0.00	0.00
4,900.00	10.64	339.47	4,837.27	646.04	-241.98	-235.09	0.00	0.00	0.00
Start Drop -2.00									
4,957.07	10.64	339.47	4,893.35	655.91	-245.68	-238.68	0.00	0.00	0.00
5,000.00	9.79	339.47	4,935.60	663.04	-248.35	-241.28	2.00	-2.00	0.00
5,100.00	7.79	339.47	5,034.42	677.35	-253.71	-246.48	2.00	-2.00	0.00
5,200.00	5.79	339.47	5,133.72	688.41	-257.85	-250.51	2.00	-2.00	0.00
5,300.00	3.79	339.47	5,233.37	696.22	-260.78	-253.35	2.00	-2.00	0.00
5,400.00	1.79	339.47	5,333.24	700.78	-262.48	-255.01	2.00	-2.00	0.00
Start 500.03 hold at 5489.31 MD									
5,489.31	0.00	0.00	5,422.54	702.08	-262.97	-255.48	2.00	-2.00	0.00
5,500.00	0.00	0.00	5,433.23	702.08	-262.97	-255.48	0.00	0.00	0.00
5,600.00	0.00	0.00	5,533.23	702.08	-262.97	-255.48	0.00	0.00	0.00
5,700.00	0.00	0.00	5,633.23	702.08	-262.97	-255.48	0.00	0.00	0.00
5,800.00	0.00	0.00	5,733.23	702.08	-262.97	-255.48	0.00	0.00	0.00
5,900.00	0.00	0.00	5,833.23	702.08	-262.97	-255.48	0.00	0.00	0.00
Start Build 12.00									
5,989.34	0.00	0.00	5,922.57	702.08	-262.97	-255.48	0.00	0.00	0.00
6,000.00	1.28	89.39	5,933.23	702.08	-262.85	-255.36	12.00	12.00	0.00
6,025.00	4.28	89.39	5,958.19	702.09	-261.64	-254.15	12.00	12.00	0.00
Sharon Springs									
6,043.71	6.52	89.39	5,976.82	702.11	-259.88	-252.39	12.00	12.00	0.00
6,050.00	7.28	89.39	5,983.06	702.12	-259.12	-251.63	12.00	12.00	0.00
6,075.00	10.28	89.39	6,007.77	702.16	-255.31	-247.82	12.00	12.00	0.00
6,100.00	13.28	89.39	6,032.24	702.22	-250.21	-242.71	12.00	12.00	0.00
6,125.00	16.28	89.39	6,056.41	702.28	-243.83	-236.34	12.00	12.00	0.00
Niobrara									
6,146.14	18.82	89.39	6,076.57	702.35	-237.45	-229.96	12.00	12.00	0.00
6,150.00	19.28	89.39	6,080.21	702.36	-236.20	-228.71	12.00	12.00	0.00
6,175.00	22.28	89.39	6,103.58	702.46	-227.33	-219.84	12.00	12.00	0.00
A Chalk									
6,195.48	24.74	89.39	6,122.36	702.54	-219.16	-211.67	12.00	12.00	0.00
6,200.00	25.28	89.39	6,126.46	702.56	-217.25	-209.76	12.00	12.00	0.00
6,225.00	28.28	89.39	6,148.78	702.68	-205.99	-198.50	12.00	12.00	0.00
6,250.00	31.28	89.39	6,170.47	702.81	-193.57	-186.08	12.00	12.00	0.00
B Chalk									
6,269.54	33.62	89.39	6,186.96	702.93	-183.09	-175.60	12.00	12.00	0.00
6,275.00	34.28	89.39	6,191.49	702.96	-180.04	-172.55	12.00	12.00	0.00
6,300.00	37.28	89.39	6,211.77	703.11	-165.43	-157.93	12.00	12.00	0.00
6,325.00	40.28	89.39	6,231.26	703.28	-149.77	-142.28	12.00	12.00	0.00
6,350.00	43.28	89.39	6,249.90	703.45	-133.12	-125.62	12.00	12.00	0.00
C Chalk									
6,371.53	45.86	89.39	6,265.23	703.61	-118.01	-110.51	12.00	12.00	0.00
6,375.00	46.28	89.39	6,267.64	703.64	-115.51	-108.01	12.00	12.00	0.00
6,400.00	49.28	89.39	6,284.44	703.84	-97.00	-89.50	12.00	12.00	0.00
6,425.00	52.28	89.39	6,300.24	704.04	-77.64	-70.14	12.00	12.00	0.00
6,450.00	55.28	89.39	6,315.01	704.26	-57.47	-49.97	12.00	12.00	0.00
6,475.00	58.28	89.39	6,328.71	704.48	-36.56	-29.06	12.00	12.00	0.00
6,500.00	61.28	89.39	6,341.29	704.71	-14.96	-7.46	12.00	12.00	0.00
6,525.00	64.28	89.39	6,352.73	704.94	7.26	14.77	12.00	12.00	0.00
6,550.00	67.28	89.39	6,362.98	705.18	30.06	37.57	12.00	12.00	0.00
Ft Hays									
6,564.64	69.04	89.39	6,368.43	705.33	43.65	51.15	12.00	12.00	0.00

Database:	EDMDBBW	Local Co-ordinate Reference:	Well Anschutz Eq Farms 4-62-9-3225D2
Company:	Bill Barrett Corp.	TVD Reference:	Well @ 4544.00usft
Project:	Weld Co., CO	MD Reference:	Well @ 4544.00usft
Site:	Sec.9-T4N-R62W	North Reference:	True
Well:	Anschutz Eq Farms 4-62-9-3225D2	Survey Calculation Method:	Minimum Curvature
Wellbore:	Wellbore #1		
Design:	Design #1		

Planned Survey									
Measured Depth (usft)	Inclination (°)	Azimuth (°)	Vertical Depth (usft)	+N/-S (usft)	+E/-W (usft)	Vertical Section (usft)	Dogleg Rate (°/100usft)	Build Rate (°/100usft)	Turn Rate (°/100usft)
6,575.00	70.28	89.39	6,372.03	705.43	53.36	60.87	12.00	12.00	0.00
6,600.00	73.28	89.39	6,379.85	705.68	77.10	84.61	12.00	12.00	0.00
6,625.00	76.28	89.39	6,386.41	705.94	101.22	108.73	12.00	12.00	0.00
Top CDLL Target									
6,644.15	78.58	89.39	6,390.58	706.13	119.91	127.42	12.00	12.00	0.00
6,650.00	79.28	89.39	6,391.70	706.19	125.65	133.16	12.00	12.00	0.00
6,675.00	82.28	89.39	6,395.71	706.46	150.32	157.84	12.00	12.00	0.00
6,700.00	85.28	89.39	6,398.41	706.72	175.17	182.69	12.00	12.00	0.00
6,725.00	88.28	89.39	6,399.82	706.98	200.13	207.64	12.00	12.00	0.00
Start 9462.00 hold at 6744.69 MD - 7" Csg.									
6,744.69	90.64	89.39	6,400.00	707.19	219.81	227.33	12.00	12.00	0.00
6,800.00	90.64	89.39	6,399.39	707.78	275.12	282.64	0.00	0.00	0.00
6,900.00	90.64	89.39	6,398.26	708.84	375.11	382.63	0.00	0.00	0.00
7,000.00	90.64	89.39	6,397.14	709.89	475.09	482.63	0.00	0.00	0.00
7,100.00	90.64	89.39	6,396.02	710.95	575.08	582.62	0.00	0.00	0.00
7,200.00	90.64	89.39	6,394.90	712.01	675.07	682.61	0.00	0.00	0.00
7,300.00	90.64	89.39	6,393.78	713.07	775.06	782.61	0.00	0.00	0.00
7,400.00	90.64	89.39	6,392.66	714.13	875.05	882.60	0.00	0.00	0.00
7,500.00	90.64	89.39	6,391.54	715.19	975.04	982.59	0.00	0.00	0.00
7,600.00	90.64	89.39	6,390.42	716.25	1,075.02	1,082.59	0.00	0.00	0.00
7,700.00	90.64	89.39	6,389.30	717.30	1,175.01	1,182.58	0.00	0.00	0.00
7,800.00	90.64	89.39	6,388.18	718.36	1,275.00	1,282.58	0.00	0.00	0.00
7,900.00	90.64	89.39	6,387.06	719.42	1,374.99	1,382.57	0.00	0.00	0.00
8,000.00	90.64	89.39	6,385.94	720.48	1,474.98	1,482.56	0.00	0.00	0.00
8,100.00	90.64	89.39	6,384.82	721.54	1,574.96	1,582.56	0.00	0.00	0.00
8,200.00	90.64	89.39	6,383.70	722.60	1,674.95	1,682.55	0.00	0.00	0.00
8,300.00	90.64	89.39	6,382.58	723.65	1,774.94	1,782.54	0.00	0.00	0.00
8,400.00	90.64	89.39	6,381.46	724.71	1,874.93	1,882.54	0.00	0.00	0.00
8,500.00	90.64	89.39	6,380.34	725.77	1,974.92	1,982.53	0.00	0.00	0.00
8,600.00	90.64	89.39	6,379.22	726.83	2,074.90	2,082.53	0.00	0.00	0.00
8,700.00	90.64	89.39	6,378.10	727.89	2,174.89	2,182.52	0.00	0.00	0.00
8,800.00	90.64	89.39	6,376.98	728.95	2,274.88	2,282.51	0.00	0.00	0.00
8,900.00	90.64	89.39	6,375.86	730.01	2,374.87	2,382.51	0.00	0.00	0.00
9,000.00	90.64	89.39	6,374.74	731.06	2,474.86	2,482.50	0.00	0.00	0.00
9,100.00	90.64	89.39	6,373.62	732.12	2,574.85	2,582.49	0.00	0.00	0.00
9,200.00	90.64	89.39	6,372.50	733.18	2,674.83	2,682.49	0.00	0.00	0.00
9,300.00	90.64	89.39	6,371.38	734.24	2,774.82	2,782.48	0.00	0.00	0.00
9,400.00	90.64	89.39	6,370.26	735.30	2,874.81	2,882.47	0.00	0.00	0.00
9,500.00	90.64	89.39	6,369.14	736.36	2,974.80	2,982.47	0.00	0.00	0.00
9,600.00	90.64	89.39	6,368.02	737.42	3,074.79	3,082.46	0.00	0.00	0.00
9,700.00	90.64	89.39	6,366.89	738.47	3,174.77	3,182.46	0.00	0.00	0.00
9,800.00	90.64	89.39	6,365.77	739.53	3,274.76	3,282.45	0.00	0.00	0.00
9,900.00	90.64	89.39	6,364.65	740.59	3,374.75	3,382.44	0.00	0.00	0.00
10,000.00	90.64	89.39	6,363.53	741.65	3,474.74	3,482.44	0.00	0.00	0.00
10,100.00	90.64	89.39	6,362.41	742.71	3,574.73	3,582.43	0.00	0.00	0.00
10,200.00	90.64	89.39	6,361.29	743.77	3,674.71	3,682.42	0.00	0.00	0.00
10,300.00	90.64	89.39	6,360.17	744.83	3,774.70	3,782.42	0.00	0.00	0.00
10,400.00	90.64	89.39	6,359.05	745.88	3,874.69	3,882.41	0.00	0.00	0.00
10,500.00	90.64	89.39	6,357.93	746.94	3,974.68	3,982.41	0.00	0.00	0.00
10,600.00	90.64	89.39	6,356.81	748.00	4,074.67	4,082.40	0.00	0.00	0.00
10,700.00	90.64	89.39	6,355.69	749.06	4,174.66	4,182.39	0.00	0.00	0.00
10,800.00	90.64	89.39	6,354.57	750.12	4,274.64	4,282.39	0.00	0.00	0.00
10,900.00	90.64	89.39	6,353.45	751.18	4,374.63	4,382.38	0.00	0.00	0.00

Database:	EDMDBBW	Local Co-ordinate Reference:	Well Anschutz Eq Farms 4-62-9-3225D2
Company:	Bill Barrett Corp.	TVD Reference:	Well @ 4544.00usft
Project:	Weld Co., CO	MD Reference:	Well @ 4544.00usft
Site:	Sec.9-T4N-R62W	North Reference:	True
Well:	Anschutz Eq Farms 4-62-9-3225D2	Survey Calculation Method:	Minimum Curvature
Wellbore:	Wellbore #1		
Design:	Design #1		

Planned Survey									
Measured Depth (usft)	Inclination (°)	Azimuth (°)	Vertical Depth (usft)	+N/-S (usft)	+E/-W (usft)	Vertical Section (usft)	Dogleg Rate (°/100usft)	Build Rate (°/100usft)	Turn Rate (°/100usft)
11,000.00	90.64	89.39	6,352.33	752.24	4,474.62	4,482.37	0.00	0.00	0.00
11,100.00	90.64	89.39	6,351.21	753.29	4,574.61	4,582.37	0.00	0.00	0.00
11,200.00	90.64	89.39	6,350.09	754.35	4,674.60	4,682.36	0.00	0.00	0.00
11,300.00	90.64	89.39	6,348.97	755.41	4,774.58	4,782.36	0.00	0.00	0.00
11,400.00	90.64	89.39	6,347.85	756.47	4,874.57	4,882.35	0.00	0.00	0.00
11,500.00	90.64	89.39	6,346.73	757.53	4,974.56	4,982.34	0.00	0.00	0.00
11,600.00	90.64	89.39	6,345.61	758.59	5,074.55	5,082.34	0.00	0.00	0.00
11,700.00	90.64	89.39	6,344.49	759.65	5,174.54	5,182.33	0.00	0.00	0.00
11,800.00	90.64	89.39	6,343.37	760.70	5,274.52	5,282.32	0.00	0.00	0.00
11,900.00	90.64	89.39	6,342.25	761.76	5,374.51	5,382.32	0.00	0.00	0.00
12,000.00	90.64	89.39	6,341.13	762.82	5,474.50	5,482.31	0.00	0.00	0.00
12,100.00	90.64	89.39	6,340.01	763.88	5,574.49	5,582.31	0.00	0.00	0.00
12,200.00	90.64	89.39	6,338.89	764.94	5,674.48	5,682.30	0.00	0.00	0.00
12,300.00	90.64	89.39	6,337.77	766.00	5,774.47	5,782.29	0.00	0.00	0.00
12,400.00	90.64	89.39	6,336.65	767.06	5,874.45	5,882.29	0.00	0.00	0.00
12,500.00	90.64	89.39	6,335.52	768.11	5,974.44	5,982.28	0.00	0.00	0.00
12,600.00	90.64	89.39	6,334.40	769.17	6,074.43	6,082.27	0.00	0.00	0.00
12,700.00	90.64	89.39	6,333.28	770.23	6,174.42	6,182.27	0.00	0.00	0.00
12,800.00	90.64	89.39	6,332.16	771.29	6,274.41	6,282.26	0.00	0.00	0.00
12,900.00	90.64	89.39	6,331.04	772.35	6,374.39	6,382.26	0.00	0.00	0.00
13,000.00	90.64	89.39	6,329.92	773.41	6,474.38	6,482.25	0.00	0.00	0.00
13,100.00	90.64	89.39	6,328.80	774.47	6,574.37	6,582.24	0.00	0.00	0.00
13,200.00	90.64	89.39	6,327.68	775.52	6,674.36	6,682.24	0.00	0.00	0.00
13,300.00	90.64	89.39	6,326.56	776.58	6,774.35	6,782.23	0.00	0.00	0.00
13,400.00	90.64	89.39	6,325.44	777.64	6,874.33	6,882.22	0.00	0.00	0.00
13,500.00	90.64	89.39	6,324.32	778.70	6,974.32	6,982.22	0.00	0.00	0.00
13,600.00	90.64	89.39	6,323.20	779.76	7,074.31	7,082.21	0.00	0.00	0.00
13,700.00	90.64	89.39	6,322.08	780.82	7,174.30	7,182.20	0.00	0.00	0.00
13,800.00	90.64	89.39	6,320.96	781.88	7,274.29	7,282.20	0.00	0.00	0.00
13,900.00	90.64	89.39	6,319.84	782.93	7,374.27	7,382.19	0.00	0.00	0.00
14,000.00	90.64	89.39	6,318.72	783.99	7,474.26	7,482.19	0.00	0.00	0.00
14,100.00	90.64	89.39	6,317.60	785.05	7,574.25	7,582.18	0.00	0.00	0.00
14,200.00	90.64	89.39	6,316.48	786.11	7,674.24	7,682.17	0.00	0.00	0.00
14,300.00	90.64	89.39	6,315.36	787.17	7,774.23	7,782.17	0.00	0.00	0.00
14,400.00	90.64	89.39	6,314.24	788.23	7,874.22	7,882.16	0.00	0.00	0.00
14,500.00	90.64	89.39	6,313.12	789.29	7,974.20	7,982.15	0.00	0.00	0.00
14,600.00	90.64	89.39	6,312.00	790.34	8,074.19	8,082.15	0.00	0.00	0.00
14,700.00	90.64	89.39	6,310.88	791.40	8,174.18	8,182.14	0.00	0.00	0.00
14,800.00	90.64	89.39	6,309.76	792.46	8,274.17	8,282.14	0.00	0.00	0.00
14,900.00	90.64	89.39	6,308.64	793.52	8,374.16	8,382.13	0.00	0.00	0.00
15,000.00	90.64	89.39	6,307.52	794.58	8,474.14	8,482.12	0.00	0.00	0.00
15,100.00	90.64	89.39	6,306.40	795.64	8,574.13	8,582.12	0.00	0.00	0.00
15,200.00	90.64	89.39	6,305.28	796.70	8,674.12	8,682.11	0.00	0.00	0.00
15,300.00	90.64	89.39	6,304.15	797.75	8,774.11	8,782.10	0.00	0.00	0.00
15,400.00	90.64	89.39	6,303.03	798.81	8,874.10	8,882.10	0.00	0.00	0.00
15,500.00	90.64	89.39	6,301.91	799.87	8,974.08	8,982.09	0.00	0.00	0.00
15,600.00	90.64	89.39	6,300.79	800.93	9,074.07	9,082.09	0.00	0.00	0.00
15,700.00	90.64	89.39	6,299.67	801.99	9,174.06	9,182.08	0.00	0.00	0.00
15,800.00	90.64	89.39	6,298.55	803.05	9,274.05	9,282.07	0.00	0.00	0.00
15,900.00	90.64	89.39	6,297.43	804.11	9,374.04	9,382.07	0.00	0.00	0.00
16,000.00	90.64	89.39	6,296.31	805.16	9,474.03	9,482.06	0.00	0.00	0.00
16,100.00	90.64	89.39	6,295.19	806.22	9,574.01	9,582.05	0.00	0.00	0.00
TD at 16206.69									
16,206.69	90.64	89.39	6,294.00	807.35	9,680.69	9,688.74	0.00	0.00	0.00

Database:	EDMDBBW	Local Co-ordinate Reference:	Well Anschutz Eq Farms 4-62-9-3225D2
Company:	Bill Barrett Corp.	TVD Reference:	Well @ 4544.00usft
Project:	Weld Co., CO	MD Reference:	Well @ 4544.00usft
Site:	Sec.9-T4N-R62W	North Reference:	True
Well:	Anschutz Eq Farms 4-62-9-3225D2	Survey Calculation Method:	Minimum Curvature
Wellbore:	Wellbore #1		
Design:	Design #1		

Planned Survey									
Measured Depth (usft)	Inclination (°)	Azimuth (°)	Vertical Depth (usft)	+N/-S (usft)	+E/-W (usft)	Vertical Section (usft)	Dogleg Rate (°/100usft)	Build Rate (°/100usft)	Turn Rate (°/100usft)

Design Targets									
Target Name	Dip Angle (°)	Dip Dir. (°)	TVD (usft)	+N/-S (usft)	+E/-W (usft)	Northing (usft)	Easting (usft)	Latitude	Longitude
- hit/miss target									
- Shape									
Anschutz Eq Farms 4-62	0.00	0.00	6,294.00	807.35	9,680.69	1,364,619.999	3,333,498.104	40° 19' 41.189 N	104° 18' 13.669 W
- plan hits target center									
- Point									

Casing Points					
Measured Depth (usft)	Vertical Depth (usft)	Name	Casing Diameter (")	Hole Diameter (")	
6,744.69	6,400.00	7" Csg.	7	8-3/4	

Formations						
Measured Depth (usft)	Vertical Depth (usft)	Name	Lithology	Dip (°)	Dip Direction (°)	
4,754.76	4,692.00	Shannon		-0.64	89.39	
6,043.71	5,974.00	Sharon Springs		-0.64	89.39	
6,146.14	6,074.00	Niobrara		-0.64	89.39	
6,195.48	6,120.00	A Chalk		-0.64	89.39	
6,269.54	6,185.00	B Chalk		-0.64	89.39	
6,371.53	6,264.00	C Chalk		-0.64	89.39	
6,564.64	6,369.00	Ft Hays		-0.64	89.39	
6,644.15	6,392.00	Top CDLL Target		-0.64	89.39	

Plan Annotations				
Measured Depth (usft)	Vertical Depth (usft)	Local Coordinates		Comment
		+N/-S (usft)	+E/-W (usft)	
900.00	900.00	0.00	0.00	Start Build 2.00
1,432.25	1,429.19	46.17	-17.29	Start 3524.82 hold at 1432.25 MD
4,957.07	4,893.35	655.91	-245.68	Start Drop -2.00
5,489.31	5,422.54	702.08	-262.97	Start 500.03 hold at 5489.31 MD
5,989.34	5,922.57	702.08	-262.97	Start Build 12.00
6,744.69	6,400.00	707.19	219.82	Start 9462.00 hold at 6744.69 MD
16,206.69	6,294.00	807.35	9,680.69	TD at 16206.69