

T4N, R62W, 6th P.M.

BILL BARRETT CORPORATION

ANSCHUTZ EQUUS FARMS 4-62-28\_27 NWNW PAD  
#4-62-28-0108C2  
NW 1/4 NW 1/4, SECTION 28, T4N, R62W, 6th P.M.  
WELD COUNTY, COLORADO

BASIS OF BEARINGS

BASIS OF BEARINGS IS A G.P.S. OBSERVATION

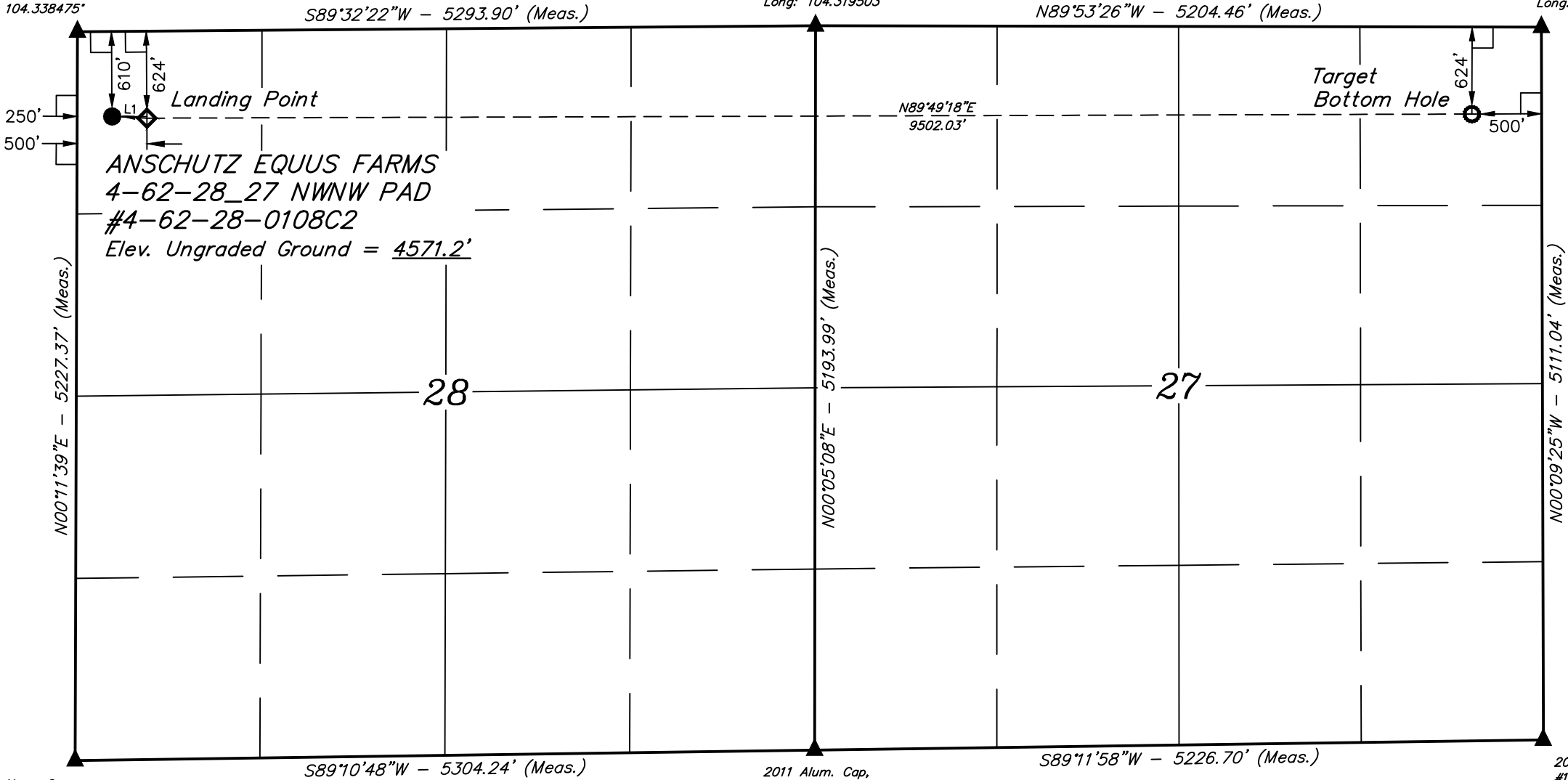
BASIS OF ELEVATION

SPOT ELEVATION LOCATED AT THE NORTHEAST CORNER OF SECTION 24, T5N, R62W, 6th P.M. TAKEN FROM THE POINT OF ROCKS, QUADRANGLE, COLORADO, WELD COUNTY, 7.5 MINUTE QUAD (TOPOGRAPHIC MAP) PUBLISHED BY THE UNITED STATES DEPARTMENT OF THE INTERIOR, GEOLOGICAL SURVEY. SAID ELEVATION IS MARKED AS BEING 4530 FEET.

2011 Alum. Cap,  
0.3' High  
Lat: 40.289986°  
Long: 104.338475°

2011 Alum. Cap,  
#17492, 0.3' High  
Lat: 40.290114°  
Long: 104.319503°

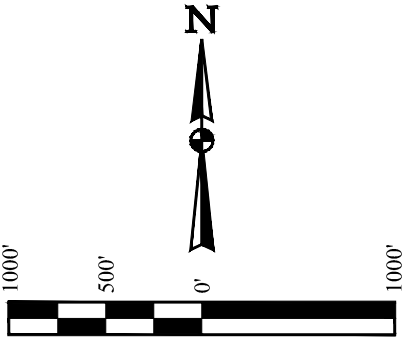
1974 Brass Cap,  
0.8' High  
Lat: 40.290094°  
Long: 104.300850°



2014 Alum. Cap,  
#28285, 0.4' High,  
in Line With East Fence  
Lat: 40.275642°  
Long: 104.338522°

2011 Alum. Cap,  
#17492, 0.4' High  
Lat: 40.275861°  
Long: 104.319517°

2011 Alum. Cap,  
#17492, 0.3' High  
Lat: 40.276069°  
Long: 104.300792°



LINE TABLE		
LINE	DIRECTION	LENGTH
L1	S87°08'54"E	250.29'

CERTIFICATE

THIS IS TO CERTIFY THAT THE ABOVE PLAT WAS PREPARED FROM FIELD NOTES OF ACTUAL SURVEYS MADE BY ME OR UNDER MY SUPERVISION, AND THAT THE SAME ARE TRUE AND CORRECT TO THE BEST OF MY KNOWLEDGE AND BELIEF.

REGISTERED LAND SURVEYOR  
REGISTRATION NO. 28285  
STATE OF COLORADO 09-25-15



PDOP = 1.2

LEGEND:

- 90° SYMBOL
- PROPOSED WELLHEAD.
- TARGET BOTTOM HOLE.
- SECTION CORNERS LOCATED.
- LANDING POINT

NAD 83 (TARGET BOTTOM HOLE)	NAD 83 (LANDING POINT)	NAD 83 (SURFACE LOCATION)
LATITUDE = 40°17'18.18" (40.288383)	LATITUDE = 40°17'17.83" (40.288286)	LATITUDE = 40°17'17.95" (40.288319)
LONGITUDE = 104°18'09.49" (104.302636)	LONGITUDE = 104°20'12.08" (104.336689)	LONGITUDE = 104°20'15.30" (104.337583)
NAD 27 (TARGET BOTTOM HOLE)	NAD 27 (LANDING POINT)	NAD 27 (SURFACE LOCATION)
LATITUDE = 40°17'18.25" (40.288403)	LATITUDE = 40°17'17.90" (40.288306)	LATITUDE = 40°17'18.02" (40.288339)
LONGITUDE = 104°18'07.66" (104.302128)	LONGITUDE = 104°20'10.25" (104.336181)	LONGITUDE = 104°20'13.47" (104.337075)
STATE PLANE NAD 83 (COLORADO NORTH)	STATE PLANE NAD 83 (COLORADO NORTH)	STATE PLANE NAD 83 (COLORADO NORTH)
N: 1350154.77 E: 3334017.31	N: 1349992.54 E: 3324519.15	N: 1350001.50 E: 3324269.09
STATE PLANE NAD 27 (COLORADO NORTH)	STATE PLANE NAD 27 (COLORADO NORTH)	STATE PLANE NAD 27 (COLORADO NORTH)
N: 350157.42 E: 2334167.61	N: 349995.13 E: 2324669.45	N: 350004.09 E: 2324419.39



UELS, LLC  
Corporate Office \* 85 South 200 East  
Vernal, UT 84078 \* (435) 789-1017

SURVEYED BY: ZANE BULLARD, C.J.	DATE: 09-08-15
DRAWN BY: C.C.	DATE DRAWN: 09-23-15
SCALE: 1" = 1000'	REVISED: 09-25-15
WELL LOCATION PLAT	