



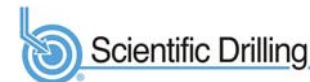
PROJECT DETAILS: Weld County, CO NAD 83

Geodetic System: US State Plane 1983
Datum: North American Datum 1983
Ellipsoid: GRS 1980
Zone: Colorado Northern Zone
System Datum: Mean Sea Level
Local North: True

Project: Weld County, CO NAD 83
Site: Anschuts Equus Farms 4-62-28 NWNW Pad
Well: Anschuts Equus Farms 4-62-28-0108C2
Wellbore: OH
Design: Plan 1



Azimuths to True North
Magnetic North: 8.28°



Magnetic Field
Strength: 52599.4snT
Dip Angle: 66.95°
Date: 10/5/2015
Model: BGGM2015

Plan: Plan 1 (Anschuts Equus Farms 4-62-28-0108C2/OH)

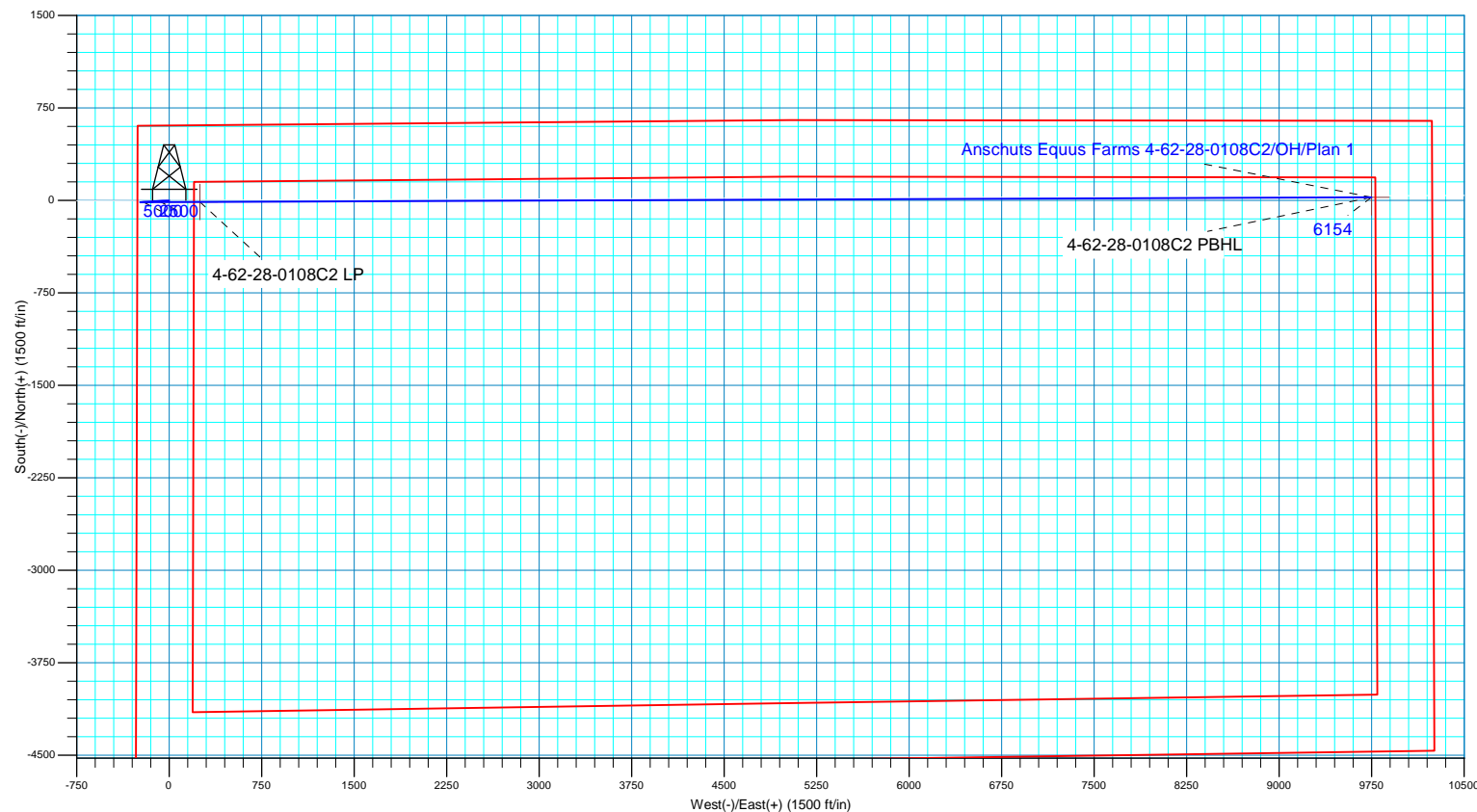
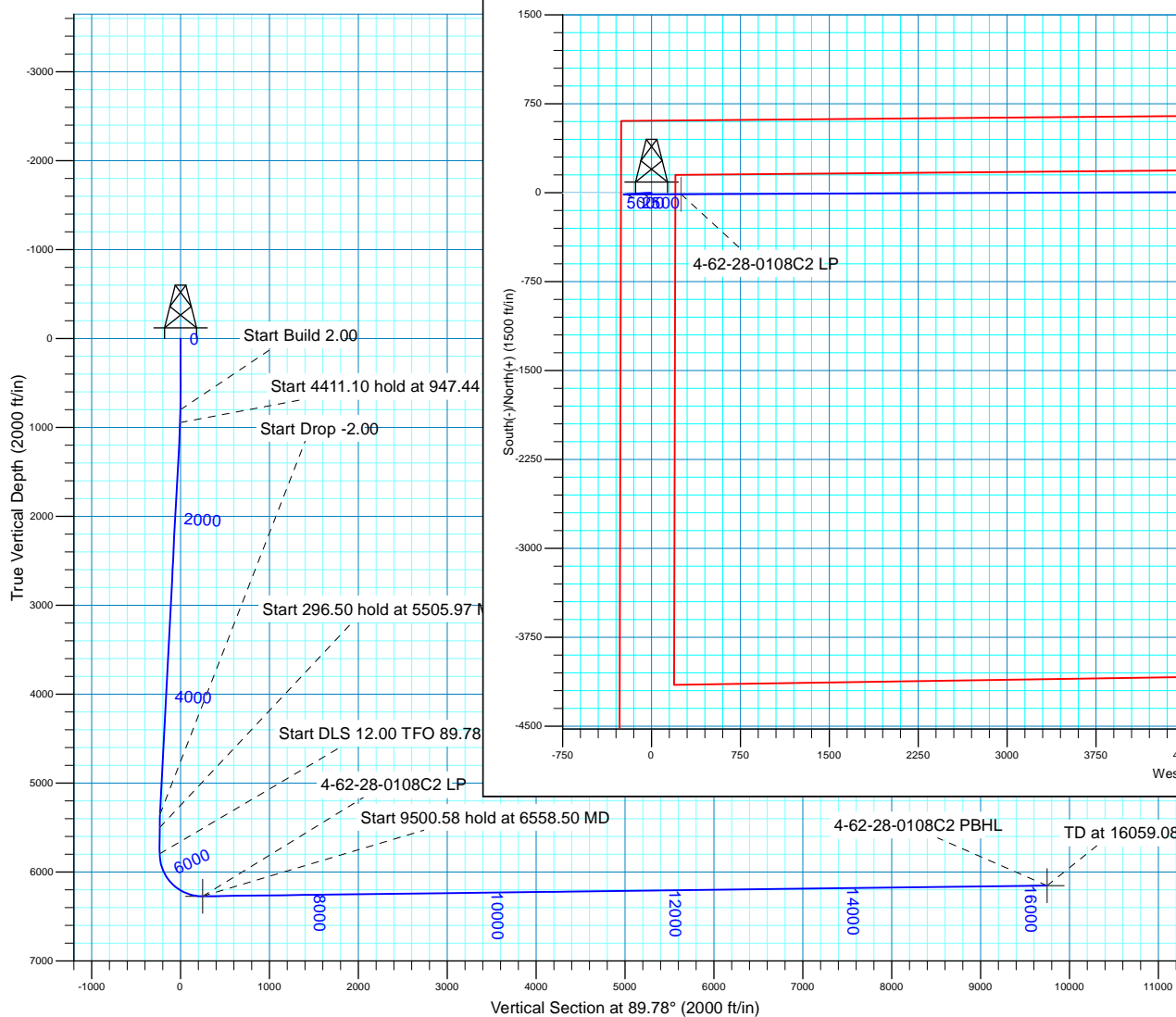
Created By: Seth Burstad Date: 10-5-2015

SECTION DETAILS

MD	Inc	Azi	TVD	+N/-S	+E/-W	Dleg	TFace	VSect
0.00	0.00	0.00	0.00	0.00	0.00	0.00	0.00	0.00
800.00	0.00	0.00	800.00	0.00	0.00	0.00	0.00	0.00
947.44	2.95	266.60	947.37	-0.23	-3.79	2.00	266.60	-3.79
5358.53	2.95	266.60	5352.63	-13.69	-230.30	0.00	0.00	-230.35
5505.97	0.00	0.00	5500.00	-13.92	-234.09	2.00	180.00	-234.14
5802.47	0.00	0.00	5796.50	-13.92	-234.09	0.00	0.00	-234.14
6558.50	90.72	89.78	6273.93	-12.02	249.40	12.00	89.78	249.35
16059.08	90.72	89.78	6154.00	25.24	9749.15	0.00	0.00	9749.17

WELL DETAILS: Anschuts Equus Farms 4-62-28-0108C2

+N/-S	+E/-W	Northing	Ground Level: Easting	4572.00 Latitude	Longitude
0.00	0.00	1350001.23	3324269.21	40° 17' 17.948 N	104° 20' 15.299 W





Bill Barrett Corporation

Bill Barrett Corp.

Weld County, CO NAD 83

Anschuts Equus Farms 4-62-28 NWNW Pad

Anschuts Equus Farms 4-62-28-0108C2

OH

Plan: Plan 1

Standard Planning Report

05 October, 2015



Scientific Drilling

www.scientificdrilling.com



Database:	Casper District	Local Co-ordinate Reference:	Well Anschuts Equus Farms 4-62-28-0108C2
Company:	Bill Barrett Corp.	TVD Reference:	GL 4572' & KB 16' @ 4588.00ft
Project:	Weld County, CO NAD 83	MD Reference:	GL 4572' & KB 16' @ 4588.00ft
Site:	Anschuts Equus Farms 4-62-28 NWNW Pad	North Reference:	True
Well:	Anschuts Equus Farms 4-62-28-0108C2	Survey Calculation Method:	Minimum Curvature
Wellbore:	OH		
Design:	Plan 1		

Project	Weld County, CO NAD 83		
Map System:	US State Plane 1983	System Datum:	Mean Sea Level
Geo Datum:	North American Datum 1983		
Map Zone:	Colorado Northern Zone		

Site		Anschuts Equus Farms 4-62-28 NWNW Pad			
Site Position:		Northing:	1,350,001.24 usft	Latitude:	40° 17' 17.948 N
From:	Lat/Long	Easting:	3,324,269.21 usft	Longitude:	104° 20' 15.299 W
Position Uncertainty:	0.00 ft	Slot Radius:	13.200 in	Grid Convergence:	0.75

Well	Anschuts Equus Farms 4-62-28-0108C2, 610' FNL 250' FWL Sec 28 T4N R62W					
Well Position	+N/-S	-0.01 ft	Northing:	1,350,001.23 usft	Latitude:	40° 17' 17.948 N
	+E/-W	0.00 ft	Easting:	3,324,269.21 usft	Longitude:	104° 20' 15.299 W
Position Uncertainty		0.00 ft	Wellhead Elevation:	0.00 ft	Ground Level:	4,572.00 ft

Wellbore	OH				
Magnetics	Model Name	Sample Date	Declination (°)	Dip Angle (°)	Field Strength (nT)
	BGGM2015	10/5/2015	8.28	66.95	52,599

Design	Plan 1			
Audit Notes:				
Version:	Phase:	PLAN	Tie On Depth:	0.00
Vertical Section:	Depth From (TVD) (ft)	+N/-S (ft)	+E/-W (ft)	Direction (°)
	0.00	0.00	0.00	89.78

Plan Sections										
Measured Depth (ft)	Inclination (°)	Azimuth (°)	Vertical Depth (ft)	+N/-S (ft)	+E/-W (ft)	Dogleg Rate (°/100ft)	Build Rate (°/100ft)	Turn Rate (°/100ft)	TFO (°)	Target
0.00	0.00	0.00	0.00	0.00	0.00	0.00	0.00	0.00	0.00	
800.00	0.00	0.00	800.00	0.00	0.00	0.00	0.00	0.00	0.00	
947.44	2.95	266.60	947.37	-0.23	-3.79	2.00	2.00	0.00	266.60	
5,358.53	2.95	266.60	5,352.63	-13.69	-230.30	0.00	0.00	0.00	0.00	
5,505.97	0.00	0.00	5,500.00	-13.92	-234.09	2.00	-2.00	0.00	180.00	
5,802.47	0.00	0.00	5,796.50	-13.92	-234.09	0.00	0.00	0.00	0.00	
6,558.50	90.72	89.78	6,273.93	-12.02	249.40	12.00	12.00	11.87	89.78	
16,059.08	90.72	89.78	6,154.00	25.24	9,749.15	0.00	0.00	0.00	0.00	4-62-28-0108C2 PBH

Database:	Casper District	Local Co-ordinate Reference:	Well Anschuts Equus Farms 4-62-28-0108C2
Company:	Bill Barrett Corp.	TVD Reference:	GL 4572' & KB 16' @ 4588.00ft
Project:	Weld County, CO NAD 83	MD Reference:	GL 4572' & KB 16' @ 4588.00ft
Site:	Anschuts Equus Farms 4-62-28 NWNW Pad	North Reference:	True
Well:	Anschuts Equus Farms 4-62-28-0108C2	Survey Calculation Method:	Minimum Curvature
Wellbore:	OH		
Design:	Plan 1		

Planned Survey									
Measured Depth (ft)	Inclination (°)	Azimuth (°)	Vertical Depth (ft)	+N/-S (ft)	+E/-W (ft)	Vertical Section (ft)	Dogleg Rate (°/100ft)	Build Rate (°/100ft)	Turn Rate (°/100ft)
0.00	0.00	0.00	0.00	0.00	0.00	0.00	0.00	0.00	0.00
100.00	0.00	0.00	100.00	0.00	0.00	0.00	0.00	0.00	0.00
200.00	0.00	0.00	200.00	0.00	0.00	0.00	0.00	0.00	0.00
300.00	0.00	0.00	300.00	0.00	0.00	0.00	0.00	0.00	0.00
400.00	0.00	0.00	400.00	0.00	0.00	0.00	0.00	0.00	0.00
500.00	0.00	0.00	500.00	0.00	0.00	0.00	0.00	0.00	0.00
600.00	0.00	0.00	600.00	0.00	0.00	0.00	0.00	0.00	0.00
700.00	0.00	0.00	700.00	0.00	0.00	0.00	0.00	0.00	0.00
800.00	0.00	0.00	800.00	0.00	0.00	0.00	0.00	0.00	0.00
Start Build 2.00									
900.00	2.00	266.60	899.98	-0.10	-1.74	-1.74	2.00	2.00	0.00
947.44	2.95	266.60	947.37	-0.23	-3.79	-3.79	2.00	2.00	0.00
Start 4411.10 hold at 947.44 MD									
1,000.00	2.95	266.60	999.87	-0.39	-6.49	-6.49	0.00	0.00	0.00
1,100.00	2.95	266.60	1,099.73	-0.69	-11.62	-11.62	0.00	0.00	0.00
1,200.00	2.95	266.60	1,199.60	-1.00	-16.76	-16.76	0.00	0.00	0.00
1,300.00	2.95	266.60	1,299.47	-1.30	-21.89	-21.90	0.00	0.00	0.00
1,400.00	2.95	266.60	1,399.34	-1.61	-27.03	-27.03	0.00	0.00	0.00
1,500.00	2.95	266.60	1,499.20	-1.91	-32.16	-32.17	0.00	0.00	0.00
1,600.00	2.95	266.60	1,599.07	-2.22	-37.30	-37.30	0.00	0.00	0.00
1,700.00	2.95	266.60	1,698.94	-2.52	-42.43	-42.44	0.00	0.00	0.00
1,800.00	2.95	266.60	1,798.81	-2.83	-47.57	-47.58	0.00	0.00	0.00
1,900.00	2.95	266.60	1,898.67	-3.13	-52.70	-52.71	0.00	0.00	0.00
2,000.00	2.95	266.60	1,998.54	-3.44	-57.84	-57.85	0.00	0.00	0.00
2,100.00	2.95	266.60	2,098.41	-3.74	-62.97	-62.99	0.00	0.00	0.00
2,200.00	2.95	266.60	2,198.28	-4.05	-68.11	-68.12	0.00	0.00	0.00
2,300.00	2.95	266.60	2,298.14	-4.36	-73.24	-73.26	0.00	0.00	0.00
2,400.00	2.95	266.60	2,398.01	-4.66	-78.38	-78.40	0.00	0.00	0.00
2,500.00	2.95	266.60	2,497.88	-4.97	-83.51	-83.53	0.00	0.00	0.00
2,600.00	2.95	266.60	2,597.75	-5.27	-88.65	-88.67	0.00	0.00	0.00
2,700.00	2.95	266.60	2,697.61	-5.58	-93.78	-93.80	0.00	0.00	0.00
2,800.00	2.95	266.60	2,797.48	-5.88	-98.92	-98.94	0.00	0.00	0.00
2,900.00	2.95	266.60	2,897.35	-6.19	-104.05	-104.08	0.00	0.00	0.00
3,000.00	2.95	266.60	2,997.22	-6.49	-109.19	-109.21	0.00	0.00	0.00
3,100.00	2.95	266.60	3,097.08	-6.80	-114.32	-114.35	0.00	0.00	0.00
3,200.00	2.95	266.60	3,196.95	-7.10	-119.46	-119.49	0.00	0.00	0.00
3,300.00	2.95	266.60	3,296.82	-7.41	-124.59	-124.62	0.00	0.00	0.00
3,400.00	2.95	266.60	3,396.69	-7.71	-129.73	-129.76	0.00	0.00	0.00
3,500.00	2.95	266.60	3,496.56	-8.02	-134.86	-134.89	0.00	0.00	0.00
3,600.00	2.95	266.60	3,596.42	-8.33	-140.00	-140.03	0.00	0.00	0.00
3,700.00	2.95	266.60	3,696.29	-8.63	-145.14	-145.17	0.00	0.00	0.00
3,800.00	2.95	266.60	3,796.16	-8.94	-150.27	-150.30	0.00	0.00	0.00
3,900.00	2.95	266.60	3,896.03	-9.24	-155.41	-155.44	0.00	0.00	0.00
4,000.00	2.95	266.60	3,995.89	-9.55	-160.54	-160.58	0.00	0.00	0.00
4,100.00	2.95	266.60	4,095.76	-9.85	-165.68	-165.71	0.00	0.00	0.00
4,200.00	2.95	266.60	4,195.63	-10.16	-170.81	-170.85	0.00	0.00	0.00
4,294.50	2.95	266.60	4,290.00	-10.45	-175.66	-175.70	0.00	0.00	0.00
SUSSEX									
4,300.00	2.95	266.60	4,295.50	-10.46	-175.95	-175.98	0.00	0.00	0.00
4,400.00	2.95	266.60	4,395.36	-10.77	-181.08	-181.12	0.00	0.00	0.00
4,500.00	2.95	266.60	4,495.23	-11.07	-186.22	-186.26	0.00	0.00	0.00
4,592.89	2.95	266.60	4,588.00	-11.36	-190.99	-191.03	0.00	0.00	0.00
BASE OF FOX HILLS									
4,600.00	2.95	266.60	4,595.10	-11.38	-191.35	-191.39	0.00	0.00	0.00

Database:	Casper District	Local Co-ordinate Reference:	Well Anschuts Equus Farms 4-62-28-0108C2
Company:	Bill Barrett Corp.	TVD Reference:	GL 4572' & KB 16' @ 4588.00ft
Project:	Weld County, CO NAD 83	MD Reference:	GL 4572' & KB 16' @ 4588.00ft
Site:	Anschuts Equus Farms 4-62-28 NWNW Pad	North Reference:	True
Well:	Anschuts Equus Farms 4-62-28-0108C2	Survey Calculation Method:	Minimum Curvature
Wellbore:	OH		
Design:	Plan 1		

Planned Survey									
Measured Depth (ft)	Inclination (°)	Azimuth (°)	Vertical Depth (ft)	+N/-S (ft)	+E/-W (ft)	Vertical Section (ft)	Dogleg Rate (°/100ft)	Build Rate (°/100ft)	Turn Rate (°/100ft)
4,700.00	2.95	266.60	4,694.97	-11.68	-196.49	-196.53	0.00	0.00	0.00
4,800.00	2.95	266.60	4,794.83	-11.99	-201.62	-201.67	0.00	0.00	0.00
4,900.00	2.95	266.60	4,894.70	-12.29	-206.76	-206.80	0.00	0.00	0.00
5,000.00	2.95	266.60	4,994.57	-12.60	-211.89	-211.94	0.00	0.00	0.00
5,100.00	2.95	266.60	5,094.44	-12.91	-217.03	-217.08	0.00	0.00	0.00
5,145.62	2.95	266.60	5,140.00	-13.04	-219.37	-219.42	0.00	0.00	0.00
SHANNON									
5,200.00	2.95	266.60	5,194.30	-13.21	-222.16	-222.21	0.00	0.00	0.00
5,300.00	2.95	266.60	5,294.17	-13.52	-227.30	-227.35	0.00	0.00	0.00
5,358.53	2.95	266.60	5,352.63	-13.69	-230.30	-230.35	0.00	0.00	0.00
Start Drop -2.00									
5,400.00	2.12	266.60	5,394.05	-13.80	-232.13	-232.19	2.00	-2.00	0.00
5,500.00	0.12	266.60	5,494.03	-13.92	-234.08	-234.14	2.00	-2.00	0.00
5,505.97	0.00	0.00	5,500.00	-13.92	-234.09	-234.14	2.00	-2.00	1,564.38
Start 296.50 hold at 5505.97 MD									
5,600.00	0.00	0.00	5,594.03	-13.92	-234.09	-234.14	0.00	0.00	0.00
5,700.00	0.00	0.00	5,694.03	-13.92	-234.09	-234.14	0.00	0.00	0.00
5,800.00	0.00	0.00	5,794.03	-13.92	-234.09	-234.14	0.00	0.00	0.00
5,802.47	0.00	0.00	5,796.50	-13.92	-234.09	-234.14	0.00	0.00	0.00
Start DLS 12.00 TFO 89.78									
5,900.00	11.70	89.78	5,893.35	-13.88	-224.16	-224.22	12.00	12.00	0.00
6,000.00	23.70	89.78	5,988.44	-13.76	-193.81	-193.86	12.00	12.00	0.00
6,028.30	27.10	89.78	6,014.00	-13.71	-181.67	-181.73	12.00	12.00	0.00
SHARON SPRINGS									
6,090.04	34.51	89.78	6,067.00	-13.59	-150.08	-150.13	12.00	12.00	0.00
NIORARA									
6,100.00	35.70	89.78	6,075.14	-13.57	-144.35	-144.40	12.00	12.00	0.00
6,147.13	41.36	89.78	6,112.00	-13.45	-115.00	-115.05	12.00	12.00	0.00
A CHALK									
6,200.00	47.70	89.78	6,149.67	-13.31	-77.94	-77.99	12.00	12.00	0.00
6,206.49	48.48	89.78	6,154.00	-13.29	-73.12	-73.17	12.00	12.00	0.00
TD (HORIZONTAL)									
6,223.42	50.51	89.78	6,165.00	-13.24	-60.24	-60.29	12.00	12.00	0.00
B CHALK									
6,300.00	59.70	89.78	6,208.76	-12.99	2.50	2.45	12.00	12.00	0.00
6,400.00	71.70	89.78	6,249.83	-12.63	93.48	93.43	12.00	12.00	0.00
6,424.81	74.68	89.78	6,257.00	-12.54	117.23	117.18	12.00	12.00	0.00
TOP "C" TARGET									
6,499.23	83.61	89.78	6,271.00	-12.26	190.25	190.20	12.00	12.00	0.00
LANDING POINT									
6,500.00	83.70	89.78	6,271.08	-12.25	191.01	190.96	12.00	12.00	0.00
6,558.50	90.72	89.78	6,273.93	-12.02	249.40	249.35	12.00	12.00	0.00
Start 9500.58 hold at 6558.50 MD									
6,600.00	90.72	89.78	6,273.40	-11.86	290.90	290.85	0.00	0.00	0.00
6,700.00	90.72	89.78	6,272.14	-11.47	390.89	390.84	0.00	0.00	0.00
6,800.00	90.72	89.78	6,270.88	-11.08	490.88	490.83	0.00	0.00	0.00
6,900.00	90.72	89.78	6,269.62	-10.68	590.87	590.83	0.00	0.00	0.00
7,000.00	90.72	89.78	6,268.35	-10.29	690.86	690.82	0.00	0.00	0.00
7,100.00	90.72	89.78	6,267.09	-9.90	790.85	790.81	0.00	0.00	0.00
7,200.00	90.72	89.78	6,265.83	-9.51	890.84	890.80	0.00	0.00	0.00
7,300.00	90.72	89.78	6,264.57	-9.11	990.84	990.79	0.00	0.00	0.00
7,400.00	90.72	89.78	6,263.30	-8.72	1,090.83	1,090.79	0.00	0.00	0.00

Database:	Casper District	Local Co-ordinate Reference:	Well Anschuts Equus Farms 4-62-28-0108C2
Company:	Bill Barrett Corp.	TVD Reference:	GL 4572' & KB 16' @ 4588.00ft
Project:	Weld County, CO NAD 83	MD Reference:	GL 4572' & KB 16' @ 4588.00ft
Site:	Anschuts Equus Farms 4-62-28 NWNW Pad	North Reference:	True
Well:	Anschuts Equus Farms 4-62-28-0108C2	Survey Calculation Method:	Minimum Curvature
Wellbore:	OH		
Design:	Plan 1		

Planned Survey									
Measured Depth (ft)	Inclination (°)	Azimuth (°)	Vertical Depth (ft)	+N/-S (ft)	+E/-W (ft)	Vertical Section (ft)	Dogleg Rate (°/100ft)	Build Rate (°/100ft)	Turn Rate (°/100ft)
7,500.00	90.72	89.78	6,262.04	-8.33	1,190.82	1,190.78	0.00	0.00	0.00
7,600.00	90.72	89.78	6,260.78	-7.94	1,290.81	1,290.77	0.00	0.00	0.00
7,700.00	90.72	89.78	6,259.52	-7.55	1,390.80	1,390.76	0.00	0.00	0.00
7,800.00	90.72	89.78	6,258.26	-7.15	1,490.79	1,490.75	0.00	0.00	0.00
7,900.00	90.72	89.78	6,256.99	-6.76	1,590.78	1,590.75	0.00	0.00	0.00
8,000.00	90.72	89.78	6,255.73	-6.37	1,690.77	1,690.74	0.00	0.00	0.00
8,100.00	90.72	89.78	6,254.47	-5.98	1,790.77	1,790.73	0.00	0.00	0.00
8,200.00	90.72	89.78	6,253.21	-5.58	1,890.76	1,890.72	0.00	0.00	0.00
8,300.00	90.72	89.78	6,251.94	-5.19	1,990.75	1,990.71	0.00	0.00	0.00
8,400.00	90.72	89.78	6,250.68	-4.80	2,090.74	2,090.71	0.00	0.00	0.00
8,500.00	90.72	89.78	6,249.42	-4.41	2,190.73	2,190.70	0.00	0.00	0.00
8,600.00	90.72	89.78	6,248.16	-4.02	2,290.72	2,290.69	0.00	0.00	0.00
8,700.00	90.72	89.78	6,246.89	-3.62	2,390.71	2,390.68	0.00	0.00	0.00
8,800.00	90.72	89.78	6,245.63	-3.23	2,490.70	2,490.67	0.00	0.00	0.00
8,900.00	90.72	89.78	6,244.37	-2.84	2,590.70	2,590.67	0.00	0.00	0.00
9,000.00	90.72	89.78	6,243.11	-2.45	2,690.69	2,690.66	0.00	0.00	0.00
9,100.00	90.72	89.78	6,241.85	-2.05	2,790.68	2,790.65	0.00	0.00	0.00
9,200.00	90.72	89.78	6,240.58	-1.66	2,890.67	2,890.64	0.00	0.00	0.00
9,300.00	90.72	89.78	6,239.32	-1.27	2,990.66	2,990.63	0.00	0.00	0.00
9,400.00	90.72	89.78	6,238.06	-0.88	3,090.65	3,090.63	0.00	0.00	0.00
9,500.00	90.72	89.78	6,236.80	-0.48	3,190.64	3,190.62	0.00	0.00	0.00
9,600.00	90.72	89.78	6,235.53	-0.09	3,290.63	3,290.61	0.00	0.00	0.00
9,700.00	90.72	89.78	6,234.27	0.30	3,390.63	3,390.60	0.00	0.00	0.00
9,800.00	90.72	89.78	6,233.01	0.69	3,490.62	3,490.59	0.00	0.00	0.00
9,900.00	90.72	89.78	6,231.75	1.08	3,590.61	3,590.59	0.00	0.00	0.00
10,000.00	90.72	89.78	6,230.48	1.48	3,690.60	3,690.58	0.00	0.00	0.00
10,100.00	90.72	89.78	6,229.22	1.87	3,790.59	3,790.57	0.00	0.00	0.00
10,200.00	90.72	89.78	6,227.96	2.26	3,890.58	3,890.56	0.00	0.00	0.00
10,300.00	90.72	89.78	6,226.70	2.65	3,990.57	3,990.55	0.00	0.00	0.00
10,400.00	90.72	89.78	6,225.44	3.05	4,090.56	4,090.55	0.00	0.00	0.00
10,500.00	90.72	89.78	6,224.17	3.44	4,190.56	4,190.54	0.00	0.00	0.00
10,600.00	90.72	89.78	6,222.91	3.83	4,290.55	4,290.53	0.00	0.00	0.00
10,700.00	90.72	89.78	6,221.65	4.22	4,390.54	4,390.52	0.00	0.00	0.00
10,800.00	90.72	89.78	6,220.39	4.61	4,490.53	4,490.51	0.00	0.00	0.00
10,900.00	90.72	89.78	6,219.12	5.01	4,590.52	4,590.51	0.00	0.00	0.00
11,000.00	90.72	89.78	6,217.86	5.40	4,690.51	4,690.50	0.00	0.00	0.00
11,100.00	90.72	89.78	6,216.60	5.79	4,790.50	4,790.49	0.00	0.00	0.00
11,200.00	90.72	89.78	6,215.34	6.18	4,890.49	4,890.48	0.00	0.00	0.00
11,300.00	90.72	89.78	6,214.07	6.58	4,990.49	4,990.47	0.00	0.00	0.00
11,400.00	90.72	89.78	6,212.81	6.97	5,090.48	5,090.47	0.00	0.00	0.00
11,500.00	90.72	89.78	6,211.55	7.36	5,190.47	5,190.46	0.00	0.00	0.00
11,600.00	90.72	89.78	6,210.29	7.75	5,290.46	5,290.45	0.00	0.00	0.00
11,700.00	90.72	89.78	6,209.03	8.14	5,390.45	5,390.44	0.00	0.00	0.00
11,800.00	90.72	89.78	6,207.76	8.54	5,490.44	5,490.43	0.00	0.00	0.00
11,900.00	90.72	89.78	6,206.50	8.93	5,590.43	5,590.43	0.00	0.00	0.00
12,000.00	90.72	89.78	6,205.24	9.32	5,690.43	5,690.42	0.00	0.00	0.00
12,100.00	90.72	89.78	6,203.98	9.71	5,790.42	5,790.41	0.00	0.00	0.00
12,200.00	90.72	89.78	6,202.71	10.11	5,890.41	5,890.40	0.00	0.00	0.00
12,300.00	90.72	89.78	6,201.45	10.50	5,990.40	5,990.39	0.00	0.00	0.00
12,400.00	90.72	89.78	6,200.19	10.89	6,090.39	6,090.39	0.00	0.00	0.00
12,500.00	90.72	89.78	6,198.93	11.28	6,190.38	6,190.38	0.00	0.00	0.00
12,600.00	90.72	89.78	6,197.66	11.68	6,290.37	6,290.37	0.00	0.00	0.00
12,700.00	90.72	89.78	6,196.40	12.07	6,390.36	6,390.36	0.00	0.00	0.00
12,800.00	90.72	89.78	6,195.14	12.46	6,490.36	6,490.36	0.00	0.00	0.00

Database:	Casper District	Local Co-ordinate Reference:	Well Anschuts Equus Farms 4-62-28-0108C2
Company:	Bill Barrett Corp.	TVD Reference:	GL 4572' & KB 16' @ 4588.00ft
Project:	Weld County, CO NAD 83	MD Reference:	GL 4572' & KB 16' @ 4588.00ft
Site:	Anschuts Equus Farms 4-62-28 NWNW Pad	North Reference:	True
Well:	Anschuts Equus Farms 4-62-28-0108C2	Survey Calculation Method:	Minimum Curvature
Wellbore:	OH		
Design:	Plan 1		

Planned Survey									
Measured Depth (ft)	Inclination (°)	Azimuth (°)	Vertical Depth (ft)	+N/-S (ft)	+E/-W (ft)	Vertical Section (ft)	Dogleg Rate (°/100ft)	Build Rate (°/100ft)	Turn Rate (°/100ft)
12,900.00	90.72	89.78	6,193.88	12.85	6,590.35	6,590.35	0.00	0.00	0.00
13,000.00	90.72	89.78	6,192.62	13.24	6,690.34	6,690.34	0.00	0.00	0.00
13,100.00	90.72	89.78	6,191.35	13.64	6,790.33	6,790.33	0.00	0.00	0.00
13,200.00	90.72	89.78	6,190.09	14.03	6,890.32	6,890.32	0.00	0.00	0.00
13,300.00	90.72	89.78	6,188.83	14.42	6,990.31	6,990.32	0.00	0.00	0.00
13,400.00	90.72	89.78	6,187.57	14.81	7,090.30	7,090.31	0.00	0.00	0.00
13,500.00	90.72	89.78	6,186.30	15.21	7,190.29	7,190.30	0.00	0.00	0.00
13,600.00	90.72	89.78	6,185.04	15.60	7,290.29	7,290.29	0.00	0.00	0.00
13,700.00	90.72	89.78	6,183.78	15.99	7,390.28	7,390.28	0.00	0.00	0.00
13,800.00	90.72	89.78	6,182.52	16.38	7,490.27	7,490.28	0.00	0.00	0.00
13,900.00	90.72	89.78	6,181.25	16.77	7,590.26	7,590.27	0.00	0.00	0.00
14,000.00	90.72	89.78	6,179.99	17.17	7,690.25	7,690.26	0.00	0.00	0.00
14,100.00	90.72	89.78	6,178.73	17.56	7,790.24	7,790.25	0.00	0.00	0.00
14,200.00	90.72	89.78	6,177.47	17.95	7,890.23	7,890.24	0.00	0.00	0.00
14,300.00	90.72	89.78	6,176.21	18.34	7,990.22	7,990.24	0.00	0.00	0.00
14,400.00	90.72	89.78	6,174.94	18.74	8,090.22	8,090.23	0.00	0.00	0.00
14,500.00	90.72	89.78	6,173.68	19.13	8,190.21	8,190.22	0.00	0.00	0.00
14,600.00	90.72	89.78	6,172.42	19.52	8,290.20	8,290.21	0.00	0.00	0.00
14,700.00	90.72	89.78	6,171.16	19.91	8,390.19	8,390.20	0.00	0.00	0.00
14,800.00	90.72	89.78	6,169.89	20.30	8,490.18	8,490.20	0.00	0.00	0.00
14,900.00	90.72	89.78	6,168.63	20.70	8,590.17	8,590.19	0.00	0.00	0.00
15,000.00	90.72	89.78	6,167.37	21.09	8,690.16	8,690.18	0.00	0.00	0.00
15,100.00	90.72	89.78	6,166.11	21.48	8,790.15	8,790.17	0.00	0.00	0.00
15,200.00	90.72	89.78	6,164.84	21.87	8,890.15	8,890.16	0.00	0.00	0.00
15,300.00	90.72	89.78	6,163.58	22.27	8,990.14	8,990.16	0.00	0.00	0.00
15,400.00	90.72	89.78	6,162.32	22.66	9,090.13	9,090.15	0.00	0.00	0.00
15,500.00	90.72	89.78	6,161.06	23.05	9,190.12	9,190.14	0.00	0.00	0.00
15,600.00	90.72	89.78	6,159.80	23.44	9,290.11	9,290.13	0.00	0.00	0.00
15,700.00	90.72	89.78	6,158.53	23.84	9,390.10	9,390.12	0.00	0.00	0.00
15,800.00	90.72	89.78	6,157.27	24.23	9,490.09	9,490.12	0.00	0.00	0.00
15,900.00	90.72	89.78	6,156.01	24.62	9,590.08	9,590.11	0.00	0.00	0.00
16,000.00	90.72	89.78	6,154.75	25.01	9,690.08	9,690.10	0.00	0.00	0.00
16,059.08	90.72	89.78	6,154.00	25.24	9,749.15	9,749.17	0.00	0.00	0.00
TD at 16059.08									

Design Targets									
Target Name	Dip Angle (°)	Dip Dir. (°)	TVD (ft)	+N/-S (ft)	+E/-W (ft)	Northing (usft)	Easting (usft)	Latitude	Longitude
4-62-28-0108C2 PBHL - hit/miss target - Shape - Point	0.00	0.00	6,154.00	25.24	9,749.15	1,350,154.26	3,334,017.17	40° 17' 18.179 N	104° 18' 9.490 W
4-62-28-0108C2 LP - plan misses target center by 0.07ft at 6558.50ft MD (6273.93 TVD, -12.02 N, 249.40 E) - Point	0.00	0.00	6,274.00	-12.01	249.40	1,349,992.49	3,324,518.75	40° 17' 17.830 N	104° 20' 12.080 W

Database:	Casper District	Local Co-ordinate Reference:	Well Anschuts Equus Farms 4-62-28-0108C2
Company:	Bill Barrett Corp.	TVD Reference:	GL 4572' & KB 16' @ 4588.00ft
Project:	Weld County, CO NAD 83	MD Reference:	GL 4572' & KB 16' @ 4588.00ft
Site:	Anschuts Equus Farms 4-62-28 NWNW Pad	North Reference:	True
Well:	Anschuts Equus Farms 4-62-28-0108C2	Survey Calculation Method:	Minimum Curvature
Wellbore:	OH		
Design:	Plan 1		

Casing Points					
Measured Depth (ft)	Vertical Depth (ft)	Name	Casing Diameter (in)	Hole Diameter (in)	
16,059.08	6,154.00	Case15	7.000	7.000	

Formations					
Measured Depth (ft)	Vertical Depth (ft)	Name	Lithology	Dip (°)	Dip Direction (°)
4,294.50	-298.00	SUSSEX		0.00	
4,592.89	0.00	BASE OF FOX HILLS		0.00	
3,589.00	0.00	BASE "C" TARGET		0.00	
5,145.62	552.00	SHANNON		0.00	
6,028.30	1,426.00	SHARON SPRINGS		0.00	
6,090.04	1,479.00	NIOBRARA		0.00	
6,147.13	1,524.00	A CHALK		0.00	
6,206.49	1,566.00	TD (HORIZONTAL)		0.00	
6,223.42	1,577.00	B CHALK		0.00	
6,424.81	1,669.00	TOP "C" TARGET		0.00	
6,499.23	1,683.00	LANDING POINT		0.00	

Plan Annotations				
Measured Depth (ft)	Vertical Depth (ft)	Local Coordinates		Comment
		+N/-S (ft)	+E/-W (ft)	
800.00	800.00	0.00	0.00	Start Build 2.00
947.44	947.37	-0.23	-3.79	Start 4411.10 hold at 947.44 MD
5,358.53	5,352.63	-13.69	-230.30	Start Drop -2.00
5,505.97	5,500.00	-13.92	-234.09	Start 296.50 hold at 5505.97 MD
5,802.47	5,796.50	-13.92	-234.09	Start DLS 12.00 TFO 89.78
6,558.50	6,273.93	-12.02	249.40	Start 9500.58 hold at 6558.50 MD
16,059.08	6,154.00	25.24	9,749.15	TD at 16059.08