

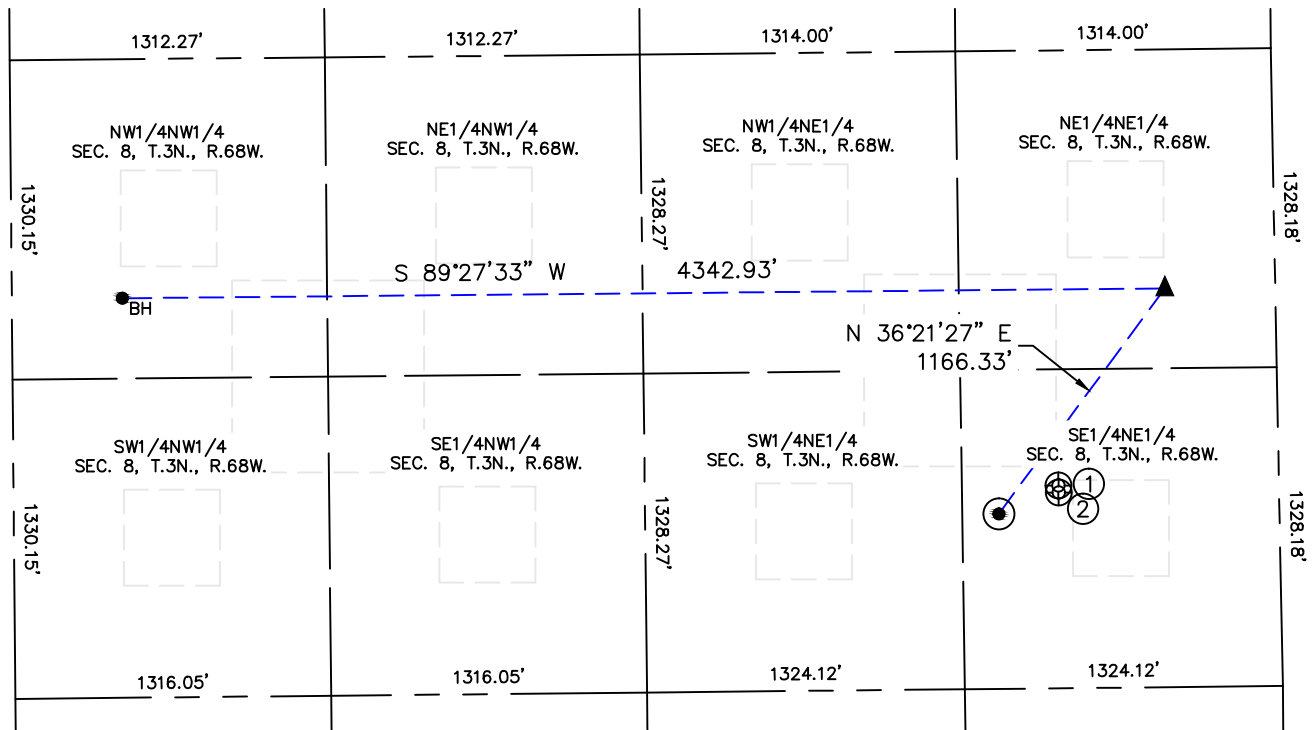


Lat40°, Inc. 6250 W. 10th Street, Unit 2, Greeley, CO 970-515-5294

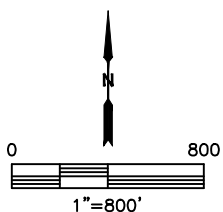
# SITE SKETCH

LITZENBERGER 5

SECTION: 8  
TOWNSHIP: 3N  
RANGE: 68W  
6TH. P.M.  
WELD COUNTY, CO



WELL NO.	WELL NAME	SHL FOOTAGE				SHL LAT°	SHL LONG°	PDOP	ELEV (FT.)	1/4/1/4
1	KINTZ 1	1812	FNL	919	FEL	40.24265	-105.02089	2.0	5078	SENE
2	KINTZ 2	1842	FNL	919	FEL	40.24257	-105.02089	1.3	5078	SENE



DATE: 6/17/2015  
PROJECT#: 2015065