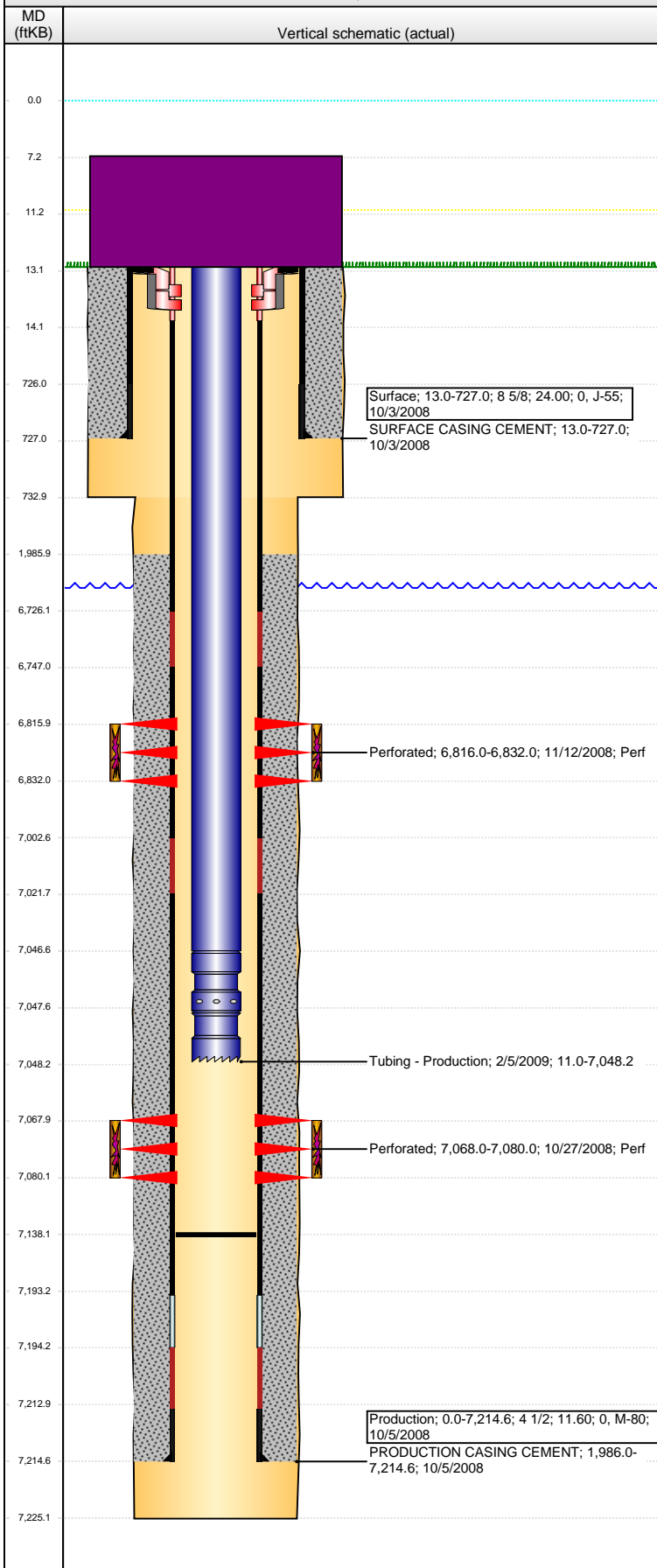


**Well Name: RIVA RED D31-06X**

VERTICAL - ORIGINAL HOLE, 10/15/2015 4:34:02 PM



## Well Header

API 05-123-29075	Business Unit DJ BASIN	District 15	Well Config VERTICAL
Original KB Elevation (ft) 4,823.00	KB - GL / MSL (ftKB) 13.00	Spud Date 10/2/2008	P & A Date
Comment			

## Directions To Well

WCR 30 & WCR 49, SOUTH 1.5 MILES, EAST INTO LOCATION.

## Congressional Location

Quarter 1	Quarter 2	Quarter 3	Quarter 4	Section	Township	Twnshp N...	Range	Rng E/W Dir
		SE	NW	31	3	N	64	W

## Bottom Hole Location

North-South Distance (ft)	From N or S Line	East-West Distance (ft)	From E or W Line

## Plug Back Total Depths

Date	Depth (ftKB)	Method	Com
10/5/2008	7,194.3	CASING TALLY	
10/27/2008	7,154.0	CASED HOLE LOG	
2/4/2009	7,138.0	TUBING TALLY	PUSH PLUG TO THIS POINT

## Wellbore Sections

Section Des	Size (in)	Act Top, MD (ftKB)	Act Btm, MD (ftKB)
SURFACE	12 1/4	13.0	733.0
PRODUCTION	7 7/8	733.0	7,225.0

## Zone Statuses

Zone Name	Status Date	Status	Fluid Type	Job	Prod Method
CODELL	11/13/2008	PR		DRILLING/CO...	
NIOBRARA	11/13/2008	PR		DRILLING/CO...	

## Casing Strings

### Surface, 727.0ftKB

Casing Description	Run Date	OD (in)	Wt/Len (l...	Grade	Top, MD (ft...	MD (ftKB)
Surface	10/3/2008	8 5/8	24.00	J-55	13.0	727.0

### Production, 7,214.6ftKB

Casing Description	Run Date	OD (in)	Wt/Len (l...	Grade	Top, MD (ft...	MD (ftKB)
Production	10/5/2008	4 1/2	11.60	M-80	0.0	7,214.6

## Cement

Description	Top Depth (ftKB)	Bottom Depth (ftKB)
SURFACE CASING CEMENT	13.0	727.0
Description	Top Depth (ftKB)	Bottom Depth (ftKB)
PRODUCTION CASING CEMENT	1,986.0	7,214.6

## Tubing Strings

Tubing Description	Run Date	String...	ID (in)	Wt (lb/ft)	Grade	Len (ft)	Set De...
Tubing - Production	2/5/2009	2 3/8	1.995	4.70	J-55	7,037.19	

## Tubing Components

Item Des	OD (in)	Wt (lb/ft)	Grade	Jts	Len (ft)	Btm (ftKB)	Btm (TVD) (ftKB)
Tubing	2 3/8	4.70	J-55	228	7,035.54	7,046.5	
Pump Seating Nipple	2 3/8	4.70	J-55	1	1.10	7,047.6	
Notched collar	2 3/8	4.70	J-55	1	0.55	7,048.2	

## Perforation Data

Zone	Bnch/St g	Entered Shot Total	Top (ftKB)	Btm (ftKB)	Date
NIOBRARA, ORIGINAL HOLE		32	6,816.00	6,832.00	11/12/2008
CODELL, ORIGINAL HOLE		48	7,068.00	7,080.00	10/27/2008

## Stimulations & Treatments

Date	Zone	Primary Job Type
11/12/2008	CODELL, ORIGINAL HOLE	DRILLING/COMPLETION - ORIGINAL
Technical Result	Tech Result Details	Tech Result Note
Success	According to Plan	

## Comment

PRE-ISIP = 3412 PSI, 5-MIN = 3117 PSI. 23 OF 48 PERFS OPEN, 80 NWB FRICTION, 66 PSI PERF FRICTION, AND 513 PSI TOTAL FRICTION. THE TREATMENT EXHIBITED A FLAT PRESSURE RESPONSE. POST JOB ISIP = 3577 PSI, 5-MIN = 3499 PSI.

**Well Name: RIVA RED D31-06X**

VERTICAL - ORIGINAL HOLE, 10/15/2015 4:34:05 PM

## Stimulations & Treatments

Date	Zone	Primary Job Type
11/12/2008	NIOBRARA, ORIGINAL HOLE	DRILLING/COMPLETION - ORIGINAL
Technical Result	Tech Result Details	Tech Result Note
Success	According to Plan	

Comment  
PRE-ISIP (281 BBL) = 3546 PSI. THE TREATMENT EXHIBITED A FLAT PRESSURE RESPONSE THROUGHOUT. POST-ISIP = 4001 PSI, 5-MIN = 3613 PSI. TURNED ON IN 53 MINUTES WITH 3200 PSI.

## Other In Hole

Run Date	Des	OD (in)	Top (ftKB)	Btm (ftKB)

## Logs

Date	Type	Top, MD (ftKB)	Btm, MD (ftKB)
10/5/2008	Caliper/Comp. Density/Neutron/GR/SP/ML	2,700.0	7,223.0
10/5/2008	DIL/GR/SP/Caliper	727.0	7,223.0
10/27/2008	CBL/CCL/GR	1,840.0	7,154.0
2/25/2011	GYRO	10.0	7,000.0

