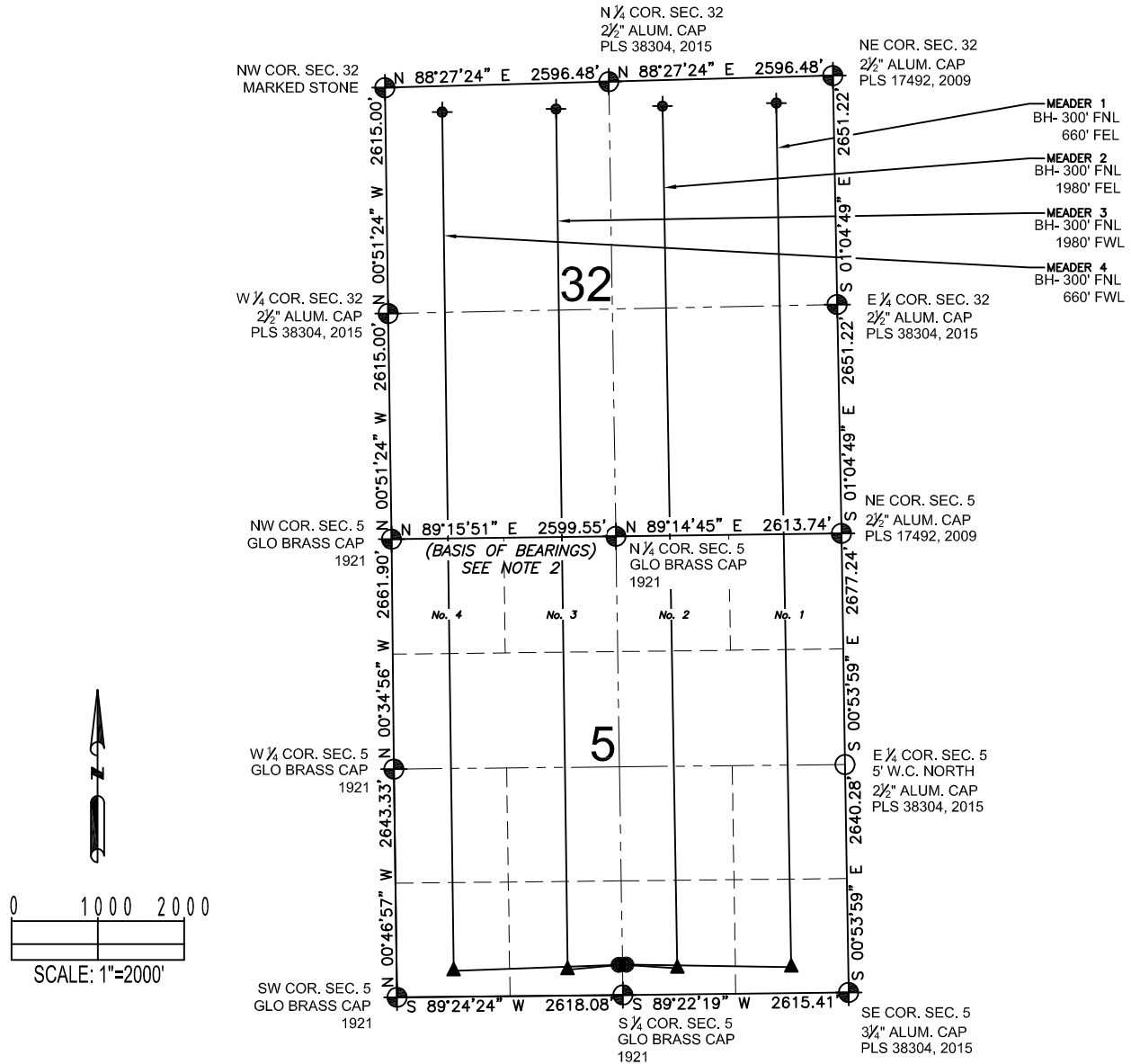


MEADER 5-N PAD MULTI-WELL PLAN



LEGEND

- ⊕ = EXISTING MONUMENT
- = CALCULATED POSITION
- = PROPOSED WELL
- ⬤ = BOTTOM HOLE
- ▲ = LANDING POINT
- LP = LANDING POINT
- BH = BOTTOM HOLE

NOTES:

- THIS FIELD SURVEY CONFORMS TO THE MINIMUM STANDARDS SET BY THE C.O.G.C.C., RULE NO. 215
- BEARINGS AND DISTANCE SHOWN HEREON ARE GRID AND BASED ON THE COLORADO STATE PLANE COORDINATE SYSTEM, NAD 83/2011 BETWEEN MONUMENTS AS LABELED HEREON AND ELEVATIONS SHOWN ARE NAVD 88, AS DERIVED BY GPS OBSERVATIONS.
- GRID DISTANCES ARE SHOWN, AS MEASURED IN THE FIELD, WITH TIES TO WELLS MEASURED PERPENDICULAR TO SECTION LINES.

NOTES:

- MEADER 1 TO BE AT 350' FSL, 2569' FEL.
- BOTTOM HOLE AT 300' FNL & 660' FEL, SEC 32, T12, R63.
- MEADER 2 TO BE AT 350' FSL, 2599' FEL.
- BOTTOM HOLE AT 300' FNL & 1980' FEL, SEC 32, T12, R63.
- MEADER 3 TO BE AT 350' FSL, 2604' FNL.
- BOTTOM HOLE AT 300' FNL & 1980' FNL, SEC 32, T12, R63.
- MEADER 4 TO BE AT 350' FSL, 2574' FNL.
- BOTTOM HOLE AT 300' FNL & 660' FNL, SEC 32, T12, R63.

PREPARED BY:



FIELD DATE:

06-24-15

SITE NAME:

MEADER 5-N PAD

DRAWING DATE:

09-24-15

SURFACE LOCATION:

SE 1/4 SW 1/4 SEC. 5, T11N, R63W, 6TH P.M.
WELD COUNTY, COLORADO

BY:

WDW

CHECKED BY:

SNC

PREPARED FOR:

