

WPX ENERGY ROCKY MOUNTAIN LLC-EBUS

RWF 531-23

Nabors 577

Post Job Summary

Cement Surface Casing

Date Prepared: 1/12/2015

Job Date: 01/05/2015

Submitted by: Aaron Katz – Grand Junction Cement Engineer

The Road to Excellence Starts with Safety

Sold To #: 300721	Ship To #: 3122907	Quote #:	Sales Order #: 0902003683
Customer: WPX ENERGY ROCKY MOUNTAIN LLC-EBUS	Customer Rep: VEARL TUCKER		
Well Name: MEAD -RWF-	Well #: 531-23	API/UWI #: 05-045-20051-00	
Field: RULISON	City (SAP): RIFLE	County/Parish: GARFIELD	State: COLORADO
Legal Description: NE SE-23-6S-94W-2303FSL-226FEL			
Contractor: NABORS DRLG	Rig/Platform Name/Num: NABORS 577		
Job BOM: 7521			
Well Type: DIRECTIONAL GAS			
Sales Person: HALAMERICA\HB50180	Srvc Supervisor: Christopher Kukus		

Job

Formation Name	
Formation Depth (MD)	Top
Form Type	BHST
Job depth MD	1220ft
Water Depth	Wk Ht Above Floor 5ft
Perforation Depth (MD)	From
	To

Well Data

Description	New / Used	Size in	ID in	Weight lbm/ft	Thread	Grade	Top MD ft	Bottom MD ft	Top TVD ft	Bottom TVD ft
Casing	0	9.625	9.001	32.3	8 RD (LT&C)	H-40	0	1220		0
Open Hole Section			13.5				0	1230		0

Tools and Accessories

Type	Size in	Qty	Make	Depth ft	Type	Size in	Qty	Make
Guide Shoe	9.625	1		1220	Top Plug	9.625	1	HES
Float Shoe	9.625				Bottom Plug	9.625		HES
Float Collar	9.625	1		1173	SSR plug set	9.625		HES
Insert Float	9.625				Plug Container	9.625	1	HES
Stage Tool	9.625				Centralizers	9.625		HES

Miscellaneous Materials

Gelling Agt	Conc	Surfactant	Conc	Acid Type	Qty	Conc
Treatment Fld	Conc	Inhibitor	Conc	Sand Type	Size	Qty

Fluid Data

Stage/Plug #: 1

Fluid #	Stage Type	Fluid Name	Qty	Qty UoM	Mixing Density lbm/gal	Yield ft3/sack	Mix Fluid Gal	Rate bbl/min	Total Mix Fluid Gal
1	Fresh Water	Fresh Water	20	bbl	8.34			4	

Fluid #	Stage Type	Fluid Name	Qty	Qty UoM	Mixing Density lbm/gal	Yield ft3/sack	Mix Fluid Gal	Rate bbl/min	Total Mix Fluid Gal
2	VariCem GJ1	VARICEM (TM) CEMENT	165	sack	12.3	2.38		7	13.77

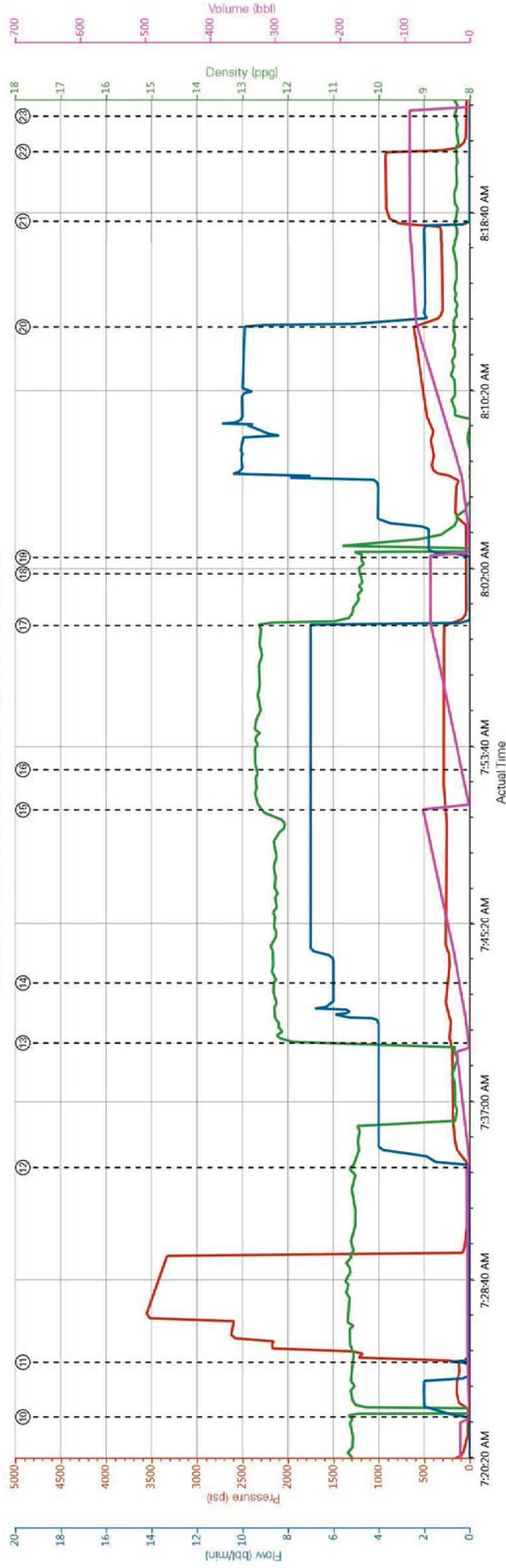
13.70 Gal		FRESH WATER							
0.25 lbm		POLY-E-FLAKE (101216940)							
Fluid #	Stage Type	Fluid Name	Qty	Qty UoM	Mixing Density lbm/gal	Yield ft3/sack	Mix Fluid Gal	Rate bbl/min	Total Mix Fluid Gal
3	VariCem GJ1	VARICEM (TM) CEMENT	165	sack	12.8	2.11		7	11.77
0.25 lbm		POLY-E-FLAKE (101216940)							
11.71 Gal		FRESH WATER							
Fluid #	Stage Type	Fluid Name	Qty	Qty UoM	Mixing Density lbm/gal	Yield ft3/sack	Mix Fluid Gal	Rate bbl/min	Total Mix Fluid Gal
4	Fresh Water Displacement	Fresh Water Displacement	92.3	bbl	8.34			10	
Cement Left In Pipe		Amount	47 ft		Reason		Shoe Joint		
Comment									

1.1 Job Event Log

Type	Seq. No.	Graph Label	Date	Time	Source	PS Pump Press (psi)	DH Density (ppg)	Comb Pump Rate (bbl/min)	Pump Stg Tot (bbl)	Comment
Event	1	Call Out	1/4/2015	19:30:30	USER					HES CREW CALLED OUT AT 19:30 WITH ON LOCATION 01:30
Event	2	Pre-Convoy Safety Meeting	1/4/2015	22:50:43	USER					ALL HES CREW MEMBERS
Event	3	Crew Leave Yard	1/4/2015	23:00:54	USER					HES CREW AND EQUIPMENT READY AND LEFT YARD AT 23:00
Event	4	Arrive at Location from Service Center	1/5/2015	01:30:01	USER					HES CREW ARRIVED 30 MINS EARLY AT 01:00 RIG WAS COMING OUT OF THE HOLE WITH DRILL PIPE HES CREW WAITED OFF LOCATION FOR RIG TO RUN CASING
Event	5	Assessment Of Location Safety Meeting	1/5/2015	05:00:09	USER					ALL HES CREW MEMBERS
Event	6	Pre-Rig Up Safety Meeting	1/5/2015	05:10:19	USER					ALL HES CREW MEMBERS
Event	7	Rig-Up Equipment	1/5/2015	05:15:28	USER					RIG UP IRON TO STAND PIPE, FRESH WATER TO UP RIGHT AND DAY TANK, BULK LINE TO BULK TRUCK
Event	8	Pre-Job Safety Meeting	1/5/2015	06:20:36	USER					ALL HES CREW MEMBERS AND RIG CREW
Event	9	Start Job	1/5/2015	07:16:16	COM5					TD: 1230 TP: 1220 SJ: 47 FC: 1173 CSG: 9 5/8 32.3# H-40 OH: 13 1/2 MUD: 9.6 VISC: 85 RIG CIRCULATED FOR 1 HOUR BEFORE CEMENT JOB
Event	10	Prime Lines	1/5/2015	07:22:23	COM5	140.0	10.65	2.0	2.0	PRIME LINES WITH 2 BBLS OF FRESH WATER
Event	11	Test Lines	1/5/2015	07:24:56	COM5	3550.0	8.34	0.30	2.0	PRESSURE TEST OK AT 3550 PSI KICK OUTS WORKING STALL OUT AT 2622 PSI
Event	12	Pump Spacer 1	1/5/2015	07:34:03	COM5	196.0	8.33	0.00	2.0	PUMP 20 BBLS OF FRESH WATER SPACER
Event	13	Pump Lead Cement	1/5/2015	07:39:53	COM5	218.00	12.33	7.0	69.9	VARICEM 165 SKS 12.3 PPG 2.38 YIELD 13.77 GAL/SK LEAD CEMENT WEIGHT VERIFIED BY MUD SCALE WET AND DRY SAMPLES WERE TAKEN TOTAL OF 69.9 BBLS OF LEAD AWAY
Event	14	Check weight	1/5/2015	07:42:41	COM5	234.00	12.32	6.00	16.4	LEAD CEMENT WEIGHT VERIFIED
Event	15	Pump Tail Cement	1/5/2015	07:50:50	COM5	271.00	12.82	7.00	60.0	VARICEM 165 SKS 12.8 PPG 2.11YIELD 11.77 GAL/SK TAIL CEMENT WEIGHT WAS VERIFIED BY MUD SCALE WET AND DRY SAMPLES WERE TAKEN TOTAL OF 60 BBLS OF TAIL AWAY

Event	16	Check weight	1/5/2015	07:52:43	COM5	282.00	12.83	7.00	13.2	TAIL CEMENT WEIGHT VERIFIED
Event	17	Shutdown	1/5/2015	07:59:28	USER	233.00	12.82	3.70	60.0	SHUTDOWN END OF CEMENT READY TANKS FOR DISPLACEMENT
Event	18	Drop Top Plug	1/5/2015	08:01:53	USER					TOP PLUG AWAY WITH NO ISSUES
Event	19	Pump Displacement	1/5/2015	08:02:39	COM5	510.0	8.42	10.0	92.3	PUMP 92.3 BBLS OF FRESH WATER DISPLACEMENT
Event	20	Slow Rate	1/5/2015	08:13:27	USER	650.0	8.36	6.90	82.3	SLOW RATE TO BUMP PLUG
Event	21	Bump Plug	1/5/2015	08:18:24	COM5	320.0	8.32	0.00	92.3	PLUG BUMP AT 320 PSI AND WAS TOOK UP TO 925 PSI
Event	22	Check Floats	1/5/2015	08:21:39	USER	925.0	8.29	0.00	92.3	FLOATS HELD WITH .5 BBL BACK
Event	23	End Job	1/5/2015	08:23:18	COM5					JOB WENT GOOD WITH NO ISSUES 40 LBS OF SUGAR WAS USED, 25 BBLS OF CEMENT TO SURFACE
Event	24	Post-Job Safety Meeting (Pre Rig-Down)	1/5/2015	08:30:25	USER					ALL HES CREW MEMBERS
Event	25	Pre-Rig Down Safety Meeting	1/5/2015	08:40:37	USER					ALL HES CREW MEMBERS
Event	26	Rig-Down Equipment	1/5/2015	08:50:54	USER					RIG DOWN FLOOR, GROUND IRON, FRESH WATER LINES, BULK LINES, WASH UP AND BLOW DOWN PUMP
Event	27	Pre-Convoy Safety Meeting	1/5/2015	09:20:03	USER					ALL HES CREW MEMBERS
Event	28	Crew Leave Location	1/5/2015	09:30:11	USER					THANK YOU FOR USING HALLIBURTON CEMENT CHRIS KUKUS AND CREW HAVE A NICE DAY

WPX ENERGY / MEAD-RWF 531-23 / 9 5/8 SURFACE CASING



PS Pump Press (psi) DH Density (ppg) Comb Pump Rate (bbl/min) Pump Stg Tot (bbl)

- | | | | |
|--|--------------------|---|--------------------------------|
| ① Call Out | ⑤ Start Job | ⑩ Shutdown | ②⑤ Pre-Rig Down Safety Meeting |
| ② Pre Convoy Safety Meeting | ⑥ Prime Lines | ⑪ Drop Top Plug | ②⑥ Rig Down Equipment |
| ③ Crew Leave Yard | ⑦ Test Lines | ⑫ Pump Displacement | ②⑦ Pre-Convoy Safety Meeting |
| ④ Arrive at Location from Service Center | ⑧ Pump Spacer 1 | ⑬ 20 Slow Rate | ②⑧ Crew Leave Location |
| ⑤ Assessment Of Location Safety Meeting | ⑨ Pump Lead Cement | ⑭ 21 Bump Plug | |
| ⑥ Pre Rig Up Safety Meeting | ⑪ Check weight | ⑮ 22 Check Floats | |
| ⑦ Rig-Up Equipment | ⑫ Pump Tail Cement | ⑯ 23 End Job | |
| ⑧ Pre-Job Safety Meeting | ⑬ Check weight | ⑰ 24 Post-Job Safety Meeting (Pre Rig Down) | |

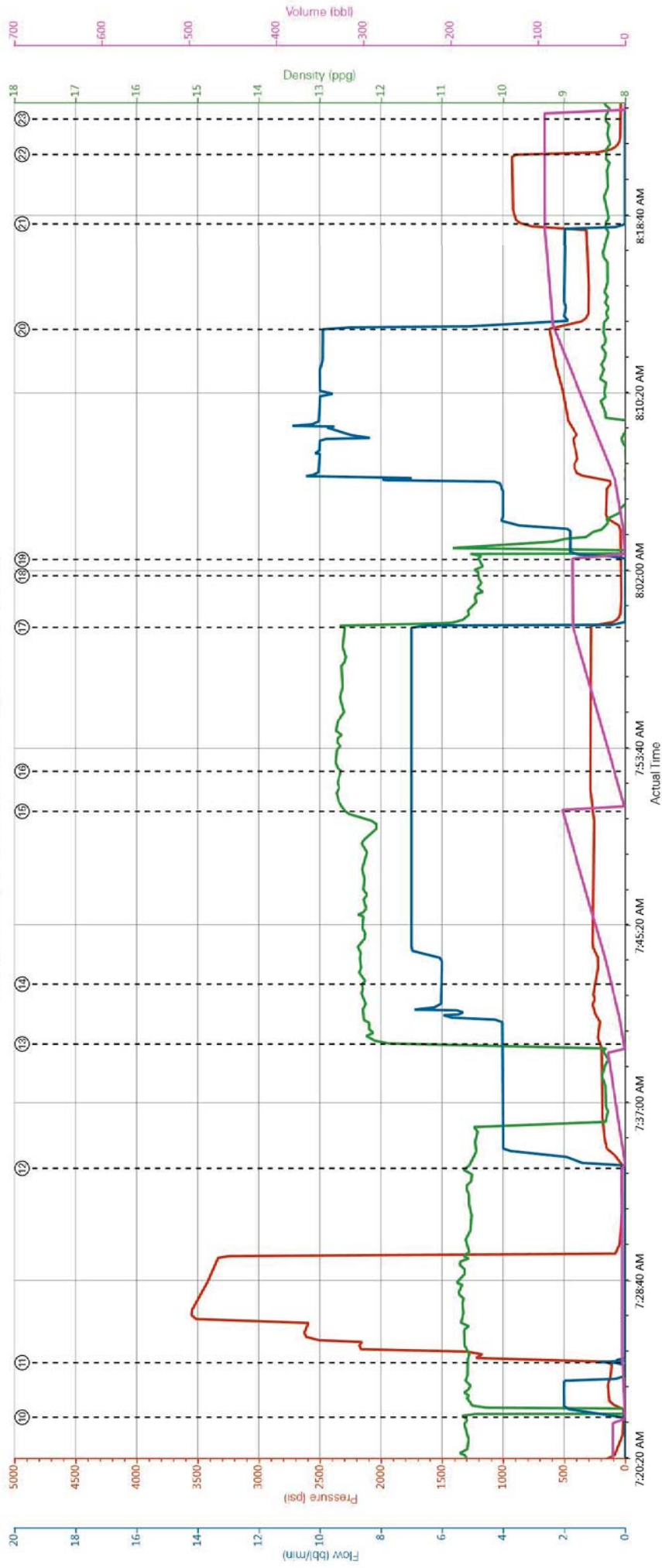
▼ HALLIBURTON | ICem® Service

Customer: WPX ENERGY LLC-EBUS
Representative: YEARL TUCKER

Job Date: 1/5/2015 6:07:30 AM
Sales Order #: 902003983

Well: MEAD-RWF 531-23
ELITE #3: ZACH DIAZ / CHRIS KUKUS

WPX ENERGY / MEAD-RWF 531-23 / 9 5/8 SURFACE CASING



PS Pump Press (psi) DH Density (ppg) Comb Pump Rate (bbl/min) Pump Stg Tot (bbl)

HALLIBURTON

Water Analysis Report

Company: WPX ENERGY

Submitted by: CHRIS KUKUS

Attention: LARRY COOKSEY

Lease MEAD-RWF

Well # 531-23

Date: 1/5/2015

Date Rec.: 1/5/2015

S.O.# 902003683

Job Type: SURFACE

Specific Gravity	<i>MAX</i>	1
pH	<i>8</i>	7
Potassium (K)	<i>5000</i>	0 Mg / L
Calcium (Ca)	<i>500</i>	120 Mg / L
Iron (FE2)	<i>300</i>	0 Mg / L
Chlorides (Cl)	<i>3000</i>	0 Mg / L
Sulfates (SO ₄)	<i>1500</i>	UNDER 400 Mg / L
Hardness		50 Mg / L
Temp	<i>40-80</i>	80 Deg
Total Dissolved Solids		130 Mg / L

Respectfully: CHRIS KUKUS

Title: CEMENTING SUPERVISOR

Location: GRAND JUNCTION , CO

NOTICE:

This report is limited to the described sample tested. Any person using or relying on this report agrees that Halliburton shall not be liable for any loss or damage whether due to act or omission resulting from such report or i

Sales Order #: 0902003683	Line Item: 10	Survey Conducted Date: 1/5/2015
Customer: WPX ENERGY ROCKY MOUNTAIN LLC-EBUS		Job Type (BOM): CMT SURFACE CASING BOM
Customer Representative: VERAL TUCKER		API / UWI: (leave blank if unknown) 05-045-20051-00
Well Name: MEAD -RWF-		Well Number: 0080124704
Well Type: DIRECTIONAL GAS	Well Country: USA	
H2S Present: No	Well State: COLORADO	Well County: GARFIELD

Dear Customer,

We hope that you were satisfied with the service quality of this job performed by Halliburton. It is the aim of our management and service personnel to deliver equipment and service of a standard unmatched in the service sector of the energy industry.

Please take the time to let us know if our performance met with your satisfaction. Please be as critical as possible to ensure we constantly improve our service. Your comments are of great value to us and are intended for the exclusive use of Halliburton.

CUSTOMER SATISFACTION SURVEY

CATEGORY	CUSTOMER SATISFACTION RESPONSE	
Survey Conducted Date	The date the survey was conducted	1/5/2015
Survey Interviewer	The survey interviewer is the person who initiated the survey.	HX35027
Customer Participation	Did the customer participate in this survey? (Y/N)	Yes
Customer Representative	Enter the Customer representative name	VERAL TUCKER
HSE	Was our HSE performance satisfactory? Circle Y or N	Yes
Equipment	Were you satisfied with our Equipment? Circle Y or N	Yes
Personnel	Were you satisfied with our people? Circle Y or N	Yes
Customer Comment	Customer's Comment	

CUSTOMER SIGNATURE

Sales Order #: 0902003683	Line Item: 10	Survey Conducted Date: 1/5/2015
Customer: WPX ENERGY ROCKY MOUNTAIN LLC-EBUS		Job Type (BOM): CMT SURFACE CASING BOM
Customer Representative: VERAL TUCKER		API / UWI: (leave blank if unknown) 05-045-20051-00
Well Name: MEAD -RWF-		Well Number: 0080124704
Well Type: DIRECTIONAL GAS	Well Country: USA	
H2S Present: No	Well State: COLORADO	Well County: GARFIELD

KEY PERFORMANCE INDICATORS

General	
Survey Conducted Date The date the survey was conducted	1/5/2015

Cementing KPI Survey	
Type of Job Select the type of job. (Cementing or Non-Cementing)	0
Select the Maximum Deviation range for this Job What is the highest deviation for the job you just completed? This may not be the maximum well deviation.	Vertical
Total Operating Time (hours) Total Operating Hours Including Rig-up, Pumping, Rig-down. Enter in decimal format.	3
HSE Incident, Accident, Injury HSE Incident, Accident, Injury. This should be recordable incidents only.	No
Was the job purpose achieved? Was the job delivered correctly as per customer agreed design?	Yes
Pumping Hours Total number of hours pumping fluid on this job. Enter in decimal format.	1.5
Type of Rig Classification Job Was Performed Type Of Rig (classification) Job Was Performed On	Drilling Rig (Portable)
Number Of JSAs Performed Number Of Jsas Performed	6
Was this a Primary Cement Job (Yes / No) Primary Cement Job= Casing job, Liner job, or Tie-back job.	Yes
Number of Unplanned Shutdowns Unplanned shutdown is when injection stops for any period of time.	0
Customer Non-Productive Rig Time (hrs)	0

Sales Order #: 0902003683	Line Item: 10	Survey Conducted Date: 1/5/2015
Customer: WPX ENERGY ROCKY MOUNTAIN LLC-EBUS		Job Type (BOM): CMT SURFACE CASING BOM
Customer Representative: VERAL TUCKER		API / UWI: (leave blank if unknown) 05-045-20051-00
Well Name: MEAD -RWF-		Well Number: 0080124704
Well Type: DIRECTIONAL GAS	Well Country: USA	
H2S Present: No	Well State: COLORADO	Well County: GARFIELD

Lost time due to Halliburton in the start, execution, or completion of an ordered service or product, or delays in a follow-on service. Enter in decimal format. 0 if none.	
Was the non productive time or the unplanned shutdown caused by a problem with a piece of equipment? Was the non productive time or the unplanned shutdown caused by a problem with a piece of equipment?	No
Did We Run Wiper Plugs? Did We Run Top And Bottom Casing Wiper Plugs?	Top
If a top plug was run, was the plug bumped? (Yes/No/N/A) If a top plug was run, was the plug bumped? (Yes/No/N/A)	Yes
If applicable, was Halliburton float equipment used? (Yes/No/N/A) If applicable, was Halliburton float equipment used? (Yes/No/N/A)	Not Available
If applicable, did the floats hold? (Yes/No/N/A) If applicable, did the floats hold? (Yes/No/N/A)	Yes
Mixing Density of Job Stayed in Designed Density Range (0-100%) Density Range defined as +/- .20 ppg. Calculation: Total BBLs cement mixed at designed density divided by total BBLs of cement multiplied by 100	80
Pump Rate (percent) of Job Stayed At Designed Pump Rate Pump Rate range defined as +/- 1bbl/min. Calculation: Total BBLs of fluid pumped at the designed rate divided by Total BBLs of fluid pumped, multiplied by 100	80
If applicable, were there returns throughout the job? (Yes/No/N/A) If applicable, were there returns throughout the job? (Yes/No/N/A)	Yes
Nbr of Remedial Plug Jobs Rqd - HES Number Of Remedial Plug Jobs Needed After Primary Plug Pumped By HES	0
Nbr of Remedial Sqz Jobs Rqd - HES Number Of Remedial Squeeze Jobs Required After Primary Job Performed By HES	0