

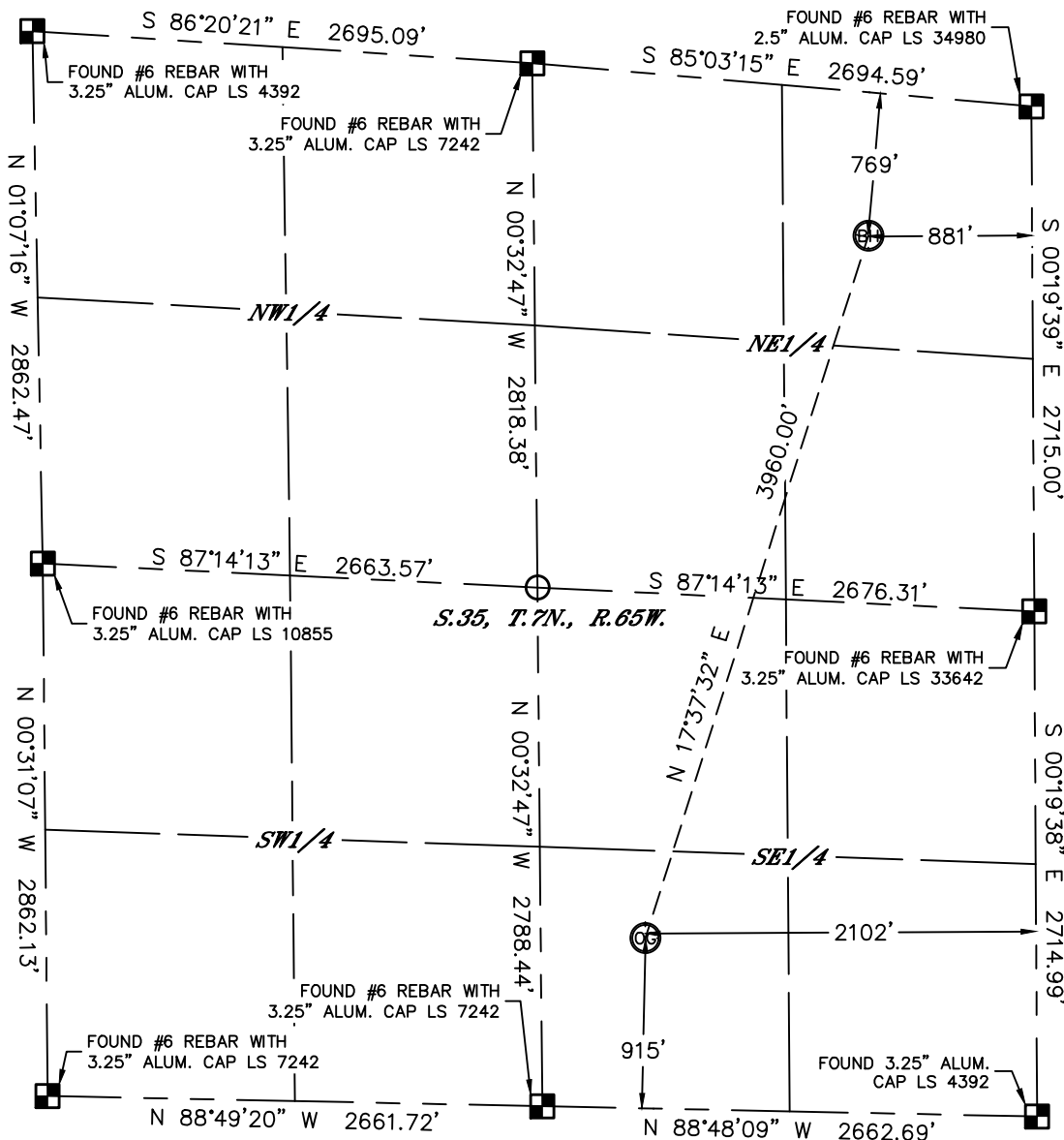


Lat40°, Inc. 6250 W. 10th Street, Unit 2, Greeley, CO 970-515-5294

WELL LOCATION CERTIFICATE

THIS MAP DOES NOT REPRESENT A BOUNDARY SURVEY

SECTION: 35
TOWNSHIP: 7N
RANGE: 65W



In accordance with a request from Derek Petrie with NGL WATER SOLUTIONS DJ Lat40°, Inc. has determined the surface location of the C-10A to be 915' from the SOUTH line and 2102' from the EAST line and the bottom hole to be 769' from the NORTH line and 881' from the EAST line as measured at right angles from the section lines of Section 35, Township 7 North, Range 65 West of the Sixth Principal Meridian, County of Weld, State of Colorado.

I hereby state that this Well Location Certificate was prepared by me, or under my direct supervision, that the fieldwork was completed on 10/27/2014, for and on behalf of NGL WATER SOLUTIONS DJ That this is not a Land Survey Plat or an Improvement Survey Plat, and that it is not to be relied upon for establishment of fence, building, or other future improvement lines.

SURFACE LOCATION

LAT: 40.52525N
LONG: 104.62813W
PDOP: 1.9
ELEV: 4808'
1/4,1/4: SWSE

BOTTOM HOLE

LAT: 40.53557N
LONG: 104.62368W

NOTE:

- 1) Bearings shown are Grid Bearings of the Colorado State Plane Coordinate System, North Zone, North American Datum 1983. The lineal dimensions as contained herein are based upon the "U.S. Survey Foot."
- 2) Ground elevations are based on an observed GPS elevation (NAVD 1988 DATUM).
- 3) IMPROVEMENTS: See LOCATION DRAWING for all visible improvements within 500' of disturbed area.
- 4) SURFACE USE: CROP LAND
- 5) INSTRUMENT OPERATOR: BRIAN ROTTINGHAUS
- 6) NEAREST CULTURAL ITEMS:
BUILDING: ±975' SW
BUILDING UNIT: ±1074' SW
HIGH OCCUPANCY BUILDING UNIT: 5280'+
DESIGNATED OUTSIDE ACTIVITY AREA: 5280'+
PUBLIC ROAD: ±901' S (CR 74)
ABOVEGROUND UTILITY: ±881' S
RAILROAD: 5280'+
PROPERTY LINE: ±787' NE

LEGEND

- = ALIQUOT MONUMENT AS DESCRIBED
○ = CALCULATED POSITION

Kyle E. Rutz—On behalf of Lat40°, Inc.
Colorado Licensed Professional
Land Surveyor No. 38307

DATE: 11/7/2014
PROJECT#: 2014178

