

LEGEND:

- = 90° SYMBOL
- = PROPOSED WELLHEAD.
- = TARGET BOTTOM HOLE.
- = SECTION CORNERS LOCATED.
- = PROPOSED TOP OF PRODUCTION

T10N, R58W, 6th P.M.

Target
Bottom Hole

R 58
W 57

1917 Brass Cap,
1.0' High
Lat: 40.817086°
Long: 103.803497°

N89°33'18"E - 2674.93' (Meas.)

N89°33'18"E - 2674.93' (Meas.)

2010 Alum. Cap,
0.3' High, N/E Fence
Lat: 40.816975°
Long: 103.822819°

2012 Alum. Cap,
0.4' High
Lat: 40.817031°
Long: 103.813158°

NOTE:
THE PROPOSED TARGET BOTTOM HOLE FOR
THIS WELL IS LOCATED IN THE NE 1/4 NE
1/4 OF SECTION 24, T10N, R58W, 6th P.M.
AT 100' FNL 330' FEL. IT BEARS
N01°01'50"E 9841.69' FROM THE PROPOSED
TOP OF PRODUCTION.

2012 Alum. Cap,
0.1' High
Lat: 40.809672°
Long: 103.822617°

2012 Alum. Cap,
Flush W/Ground
Lat: 40.809803°
Long: 103.803386°

| LINE TABLE | | |
|------------|-------------|---------|
| LINE | DIRECTION | LENGTH |
| L1 | N14°58'43"E | 357.40' |

25

Proposed
Top of
Production

RAZOR #25P-2448
Elev. Ungraded Ground = 4744.3'

2010 Alum. Cap,
Flush W/Ground,
N/W Fence
Lat: 40.802369°
Long: 103.822411°

S89°15'31"W - 2670.99' (Meas.)

2012 Alum. Cap,
0.2' High
Lat: 40.802461°
Long: 103.812767°

S89°15'31"W
2670.99' (Meas.)

2010 Alum. Cap,
Flush W/Ground
Lat: 40.802556°
Long: 103.803122°



PDOP = 1.3

| NAD 83 (SURFACE LOCATION) | NAD 83 (PROPOSED TOP OF PRODUCTION) |
|--|--|
| LATITUDE = 40°48'12.14" (40.803372) | LATITUDE = 40°48'15.55" (40.804319) |
| LONGITUDE = 103°48'18.76" (103.805211) | LONGITUDE = 103°48'17.56" (103.804878) |
| NAD 27 (SURFACE LOCATION) | NAD 27 (SURFACE LOCATION) |
| LATITUDE = 40°48'12.19" (40.803386) | LATITUDE = 40°48'15.60" (40.804333) |
| LONGITUDE = 103°48'16.95" (103.804708) | LONGITUDE = 103°48'15.75" (103.804375) |

BASIS OF BEARINGS

BASIS OF BEARINGS IS A G.P.S. OBSERVATION

BASIS OF ELEVATION

SPOT ELEVATION LOCATED AT THE NORTHEAST CORNER OF SECTION 15, T9N, R58W, 6th P.M. TAKEN FROM THE GATEHOOK SPRING, QUADRANGLE, COLORADO, WELD COUNTY, 7.5 MINUTE QUAD (TOPOGRAPHIC MAP) PUBLISHED BY THE UNITED STATES DEPARTMENT OF THE INTERIOR, GEOLOGICAL SURVEY. SAID ELEVATION IS MARKED AS BEING 4679 FEET.



CERTIFICATE
THIS IS TO CERTIFY THAT THE ABOVE PLAT WAS PREPARED FROM FIELD NOTES OF ACTUAL SURVEYS MADE BY ME OR UNDER MY SUPERVISION AND THAT THE SAME ARE TRUE AND CORRECT TO THE BEST OF MY KNOWLEDGE AND BELIEF.

REGISTERED LAND SURVEYOR
REGISTRATION NO. 28285
STATE OF COLORADO
08-24-15

WHITING OIL & GAS CORP.

RAZOR #25P-2448 (SURFACE LOCATION)
SE 1/4 SE 1/4, SECTION 25, T10N, R58W, 6th P.M.
WELD COUNTY, COLORADO

| | |
|--------------------------------|------------------------|
| SURVEYED BY: CHAD MEIERS, C.M. | DATE: 03-13-15 |
| DRAWN BY: J.A. | DATE DRAWN: 03-26-15 |
| SCALE: 1" = 1000' | REVISED: 08-19-15 B.A. |
| WELL LOCATION PLAT | |

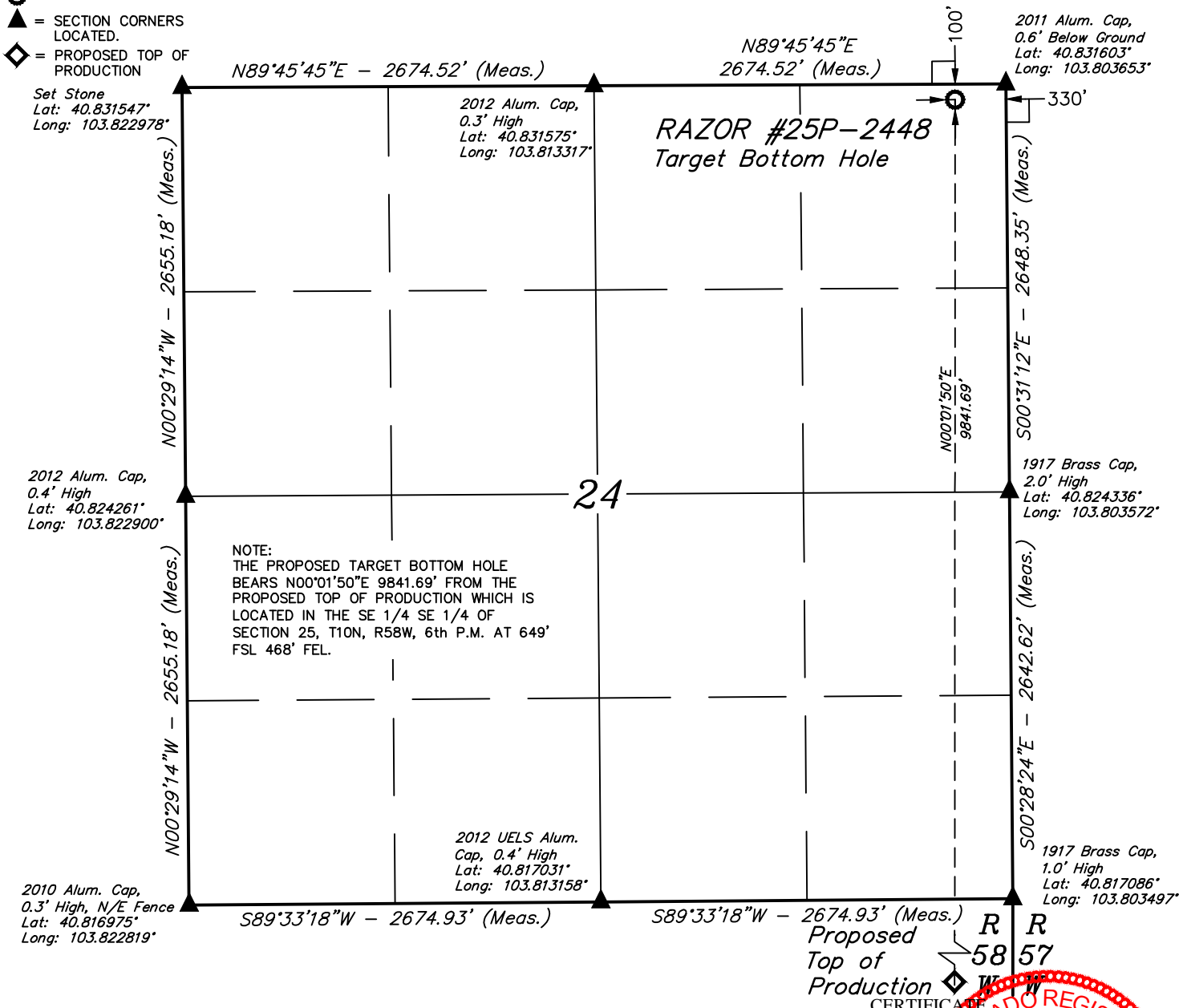


UELS, LLC
Corporate Office * 85 South 200 East
Vernal, UT 84078 * (435) 789-1017

LEGEND:

- = 90° SYMBOL
- = PROPOSED WELLHEAD.
- = TARGET BOTTOM HOLE.
- ▲ = SECTION CORNERS LOCATED.
- ◆ = PROPOSED TOP OF PRODUCTION

T10N, R58W, 6th P.M.



| |
|--|
| NAD 83 (TARGET BOTTOM HOLE) |
| LATITUDE = 40°49'52.77" (40.831325) |
| LONGITUDE = 103°48'17.44" (103.804844) |
| NAD 27 (TARGET BOTTOM HOLE) |
| LATITUDE = 40°49'52.82" (40.831339) |
| LONGITUDE = 103°48'15.63" (103.804342) |



THIS IS TO CERTIFY THAT THE ABOVE PLAT WAS PREPARED FROM FIELD NOTES OF ACTUAL SURVEYS MADE BY ME OR UNDER MY SUPERVISION AND THAT THE SAME ARE TRUE AND CORRECT TO THE BEST OF MY KNOWLEDGE AND BELIEF.

REGISTERED LAND SURVEYOR
REGISTRATION NO. 28285
STATE OF COLORADO
08-24-15

BASIS OF BEARINGS

BASIS OF BEARINGS IS A G.P.S. OBSERVATION

BASIS OF ELEVATION

SPOT ELEVATION LOCATED AT THE NORTHEAST CORNER OF SECTION 15, T9N, R58W, 6th P.M. TAKEN FROM THE GATEHOOK SPRING, QUADRANGLE, COLORADO, WELD COUNTY, 7.5 MINUTE QUAD (TOPOGRAPHIC MAP) PUBLISHED BY THE UNITED STATES DEPARTMENT OF THE INTERIOR, GEOLOGICAL SURVEY. SAID ELEVATION IS MARKED AS BEING 4679 FEET.



WHITING OIL & GAS CORP.

RAZOR #25P-2448 (TARGET BOTTOM HOLE)
NE 1/4 NE 1/4, SECTION 24, T10N, R58W, 6th P.M.
WELD COUNTY, COLORADO

| | |
|--------------------------------|------------------------|
| SURVEYED BY: CHAD MEIERS, C.M. | DATE: 03-13-15 |
| DRAWN BY: J.A. | DATE DRAWN: 03-26-15 |
| SCALE: 1" = 1000' | REVISED: 08-19-15 B.A. |
| WELL LOCATION PLAT | |



UELS, LLC
Corporate Office * 85 South 200 East
Vernal, UT 84078 * (435) 789-1017