



Project: Weld County, CO
Site: Sec 25-T10N-R58W
Well: Razor #25P-2415
Wellbore: Hz
Design: APD

PROJECT DETAILS: Weld County, CO
Geodetic System: US State Plane 1983
Datum: North American Datum 1983
Ellipsoid: GRS 1980
Zone: Colorado Northern Zone
System Datum: Mean Sea Level



Azimuths to True North
Magnetic North: 7.83°
Magnetic Field
Strength: 53020.8nT
Dip Angle: 67.38°
Date: 5/27/2015
Model: IGRF2010

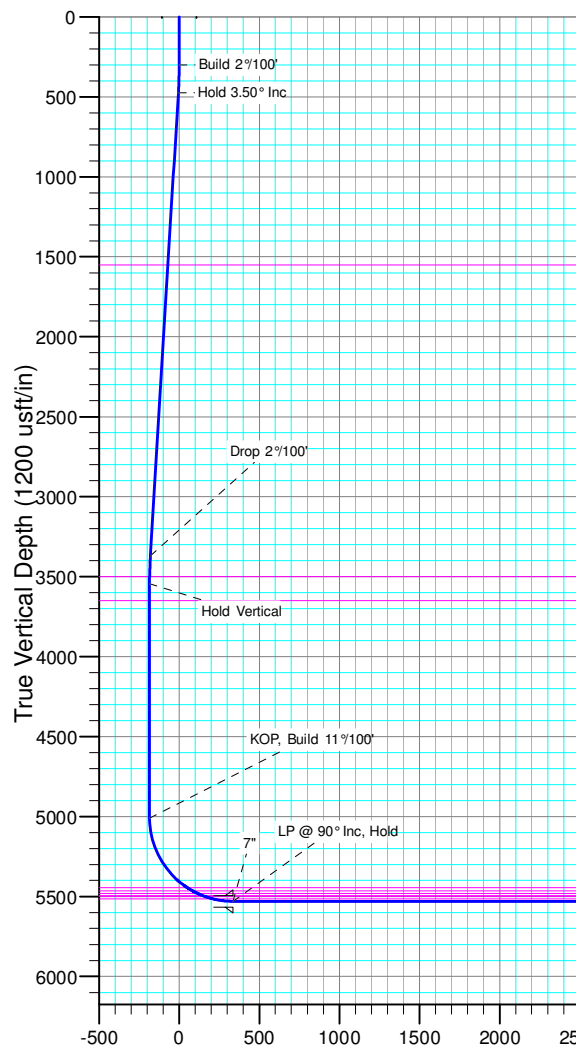
FORMATION TOP DETAILS		
TVDPath	MDPath	Formation
1550.00	1552.12	Upper Pierre
3500.00	3505.62	Hygiene
3650.00	3655.63	Lower Pierre
5444.00	5529.34	P200 Marker
5464.00	5567.87	P300 Marker
5480.00	5602.84	P350 Marker
5494.00	5638.14	Sharon Springs
5498.00	5649.40	Niobrara
5515.00	5707.62	Top A Chalk

WELL DETAILS: Razor #25P-2415

+N/-S	+E/-W	Northing	Ground Level:	4741.00	Eastings	4741.00	Latitude	4741.00	Longitude	Slot
0.00	0.00	1540048.03	3469147.33	40° 48'	12.630 N	103° 48'	19.160 W			

SECTION DETAILS

Sec	MD	Inc	Azi	TVD	+N/-S	+E/-W	Dleg	TFace	VSect	Target
1	0.00	0.00	0.00	0.00	0.00	0.00	0.00	0.00	0.00	
2	300.00	0.00	0.00	300.00	0.00	0.00	0.00	0.00	0.00	
3	475.00	3.50	190.00	474.89	-5.26	-0.93	2.00	190.00	-5.26	
4	3375.00	3.50	190.00	3369.48	-179.61	-31.67	0.00	0.00	-179.51	
5	3550.00	0.00	0.00	3544.37	-184.88	-32.60	2.00	180.00	-184.77	
6	5014.76	0.00	0.00	5009.13	-184.88	-32.60	0.00	0.00	-184.77	
7	5832.94	90.00	0.00	5530.00	335.99	-32.58	11.00	0.00	336.10	PBHL 2415
8	15631.67	90.00	0.00	5530.00	10134.73	-32.29	0.00	0.00	10134.78	PBHL 2415



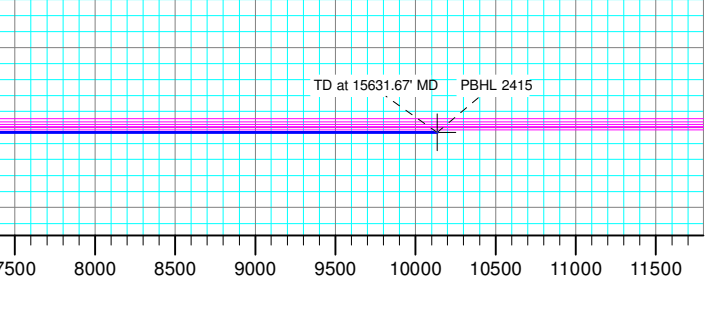
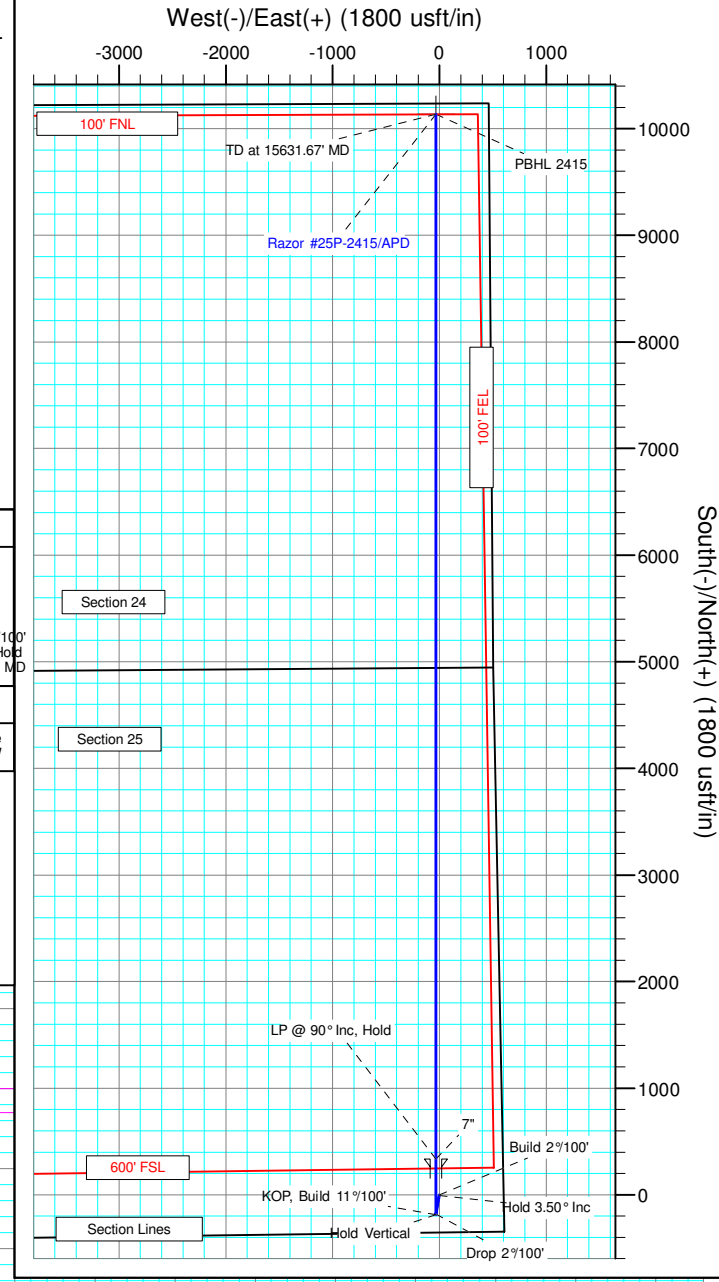
ANNOTATIONS									
TVD	MD	Inc	Azi	+N/-S	+E/-W	VSect	Departure	Annotation	
300.00	300.00	0.00	0.00	0.00	0.00	0.00	0.00	Build 2°/100'	
474.89	475.00	3.50	190.00	-5.26	-0.93	-5.26	5.34	Hold 3.50° Inc	
3369.48	3375.00	3.50	190.00	-179.61	-31.67	-179.51	182.38	Drop 2°/100'	
3544.37	3550.00	0.00	0.00	-184.88	-32.60	-184.77	187.73	Hold Vertical	
5009.13	5014.76	0.00	0.00	-184.88	-32.60	-184.77	187.73	KOP, Build 11°/100'	
5530.00	5832.94	90.00	0.00	335.99	-32.58	336.10	708.60	LP @ 90° Inc, Hold	
5530.00	15631.67	90.00	0.00	10134.73	-32.29	10134.78	10507.33	TD at 15631.67' MD	

DESIGN TARGET DETAILS							
Name	TVD	+N/-S	+E/-W	Northing	Eastings	Latitude	Longitude
PBHL 2415	5530.00	10134.73	-32.29	1550180.29	3468921.37	40° 49' 52.770 N	103° 48' 19.580 W

SHL:
355' FSL, 599' FEL
Sec25-T10N-R58W

BHL:
100' FNL, 495' FEL
Sec24-T10N-R58W

7":
691' FSL, 631' FEL
Sec25-T10N-R58W





Whiting Petroleum Corp.

**Weld County, CO
Sec 25-T10N-R58W
Razor #25P-2415**

Hz

Plan: APD

Standard Planning Report

27 May, 2015



WOG

Planning Report

Database:	LandmarkEDM	Local Co-ordinate Reference:	Well Razor #25P-2415
Company:	Whiting Petroleum Corp.	TVD Reference:	KBE @ 4762.00usft (Original Well Elev)
Project:	Weld County, CO	MD Reference:	KBE @ 4762.00usft (Original Well Elev)
Site:	Sec 25-T10N-R58W	North Reference:	True
Well:	Razor #25P-2415	Survey Calculation Method:	Minimum Curvature
Wellbore:	Hz		
Design:	APD		

Project	Weld County, CO		
Map System:	US State Plane 1983	System Datum:	Mean Sea Level
Geo Datum:	North American Datum 1983		
Map Zone:	Colorado Northern Zone		

Site		Sec 25-T10N-R58W			
Site Position:		Northing:	1,544,564.45 usft	Latitude:	40° 48' 58.050 N
From:	Lat/Long	Easting:	3,464,883.62 usft	Longitude:	103° 49' 13.480 W
Position Uncertainty:	0.00 usft	Slot Radius:	13.200 in	Grid Convergence:	1.09 °

Well		Razor #25P-2415				
Well Position	+N/-S	-4,596.36 usft	Northing:	1,540,048.03 usft	Latitude:	40° 48' 12.630 N
	+E/-W	4,177.40 usft	Easting:	3,469,147.32 usft	Longitude:	103° 48' 19.160 W
Position Uncertainty		0.00 usft	Wellhead Elevation:		Ground Level:	4,741.00 usft

Wellbore	Hz				
Magnetics	Model Name	Sample Date	Declination (°)	Dip Angle (°)	Field Strength (nT)
	IGRF2010	5/27/2015	7.83	67.38	53,021

Design	APD			
Audit Notes:				
Version:	Phase:	PROTOTYPE	Tie On Depth:	0.00
Vertical Section:	Depth From (TVD) (usft)	+N/-S (usft)	+E/-W (usft)	Direction (°)
	0.00	0.00	0.00	359.82

Plan Sections										
Measured Depth (usft)	Inclination (°)	Azimuth (°)	Vertical Depth (usft)	+N/-S (usft)	+E/-W (usft)	Dogleg Rate (°/100ft)	Build Rate (°/100ft)	Turn Rate (°/100ft)	TFO (°)	Target
0.00	0.00	0.00	0.00	0.00	0.00	0.00	0.00	0.00	0.00	
300.00	0.00	0.00	300.00	0.00	0.00	0.00	0.00	0.00	0.00	
475.00	3.50	190.00	474.89	-5.26	-0.93	2.00	2.00	0.00	190.00	
3,375.00	3.50	190.00	3,369.48	-179.61	-31.67	0.00	0.00	0.00	0.00	
3,550.00	0.00	0.00	3,544.37	-184.88	-32.60	2.00	-2.00	97.14	180.00	
5,014.76	0.00	0.00	5,009.13	-184.88	-32.60	0.00	0.00	0.00	0.00	
5,832.94	90.00	0.00	5,530.00	335.99	-32.58	11.00	11.00	0.00	0.00	PBHL 2415
15,631.67	90.00	0.00	5,530.00	10,134.73	-32.29	0.00	0.00	0.00	0.00	PBHL 2415



WOG

Planning Report

Database:	LandmarkEDM	Local Co-ordinate Reference:	Well Razor #25P-2415
Company:	Whiting Petroleum Corp.	TVD Reference:	KBE @ 4762.00usft (Original Well Elev)
Project:	Weld County, CO	MD Reference:	KBE @ 4762.00usft (Original Well Elev)
Site:	Sec 25-T10N-R58W	North Reference:	True
Well:	Razor #25P-2415	Survey Calculation Method:	Minimum Curvature
Wellbore:	Hz		
Design:	APD		

Planned Survey									
Measured Depth (usft)	Inclination (°)	Azimuth (°)	Vertical Depth (usft)	+N/-S (usft)	+E/-W (usft)	Vertical Section (usft)	Dogleg Rate (°/100ft)	Build Rate (°/100ft)	Turn Rate (°/100ft)
0.00	0.00	0.00	0.00	0.00	0.00	0.00	0.00	0.00	0.00
100.00	0.00	0.00	100.00	0.00	0.00	0.00	0.00	0.00	0.00
200.00	0.00	0.00	200.00	0.00	0.00	0.00	0.00	0.00	0.00
300.00	0.00	0.00	300.00	0.00	0.00	0.00	0.00	0.00	0.00
Build 2°/100'									
400.00	2.00	190.00	399.98	-1.72	-0.30	-1.72	2.00	2.00	0.00
475.00	3.50	190.00	474.89	-5.26	-0.93	-5.26	2.00	2.00	0.00
Hold 3.50° Inc									
500.00	3.50	190.00	499.84	-6.77	-1.19	-6.76	0.00	0.00	0.00
600.00	3.50	190.00	599.66	-12.78	-2.25	-12.77	0.00	0.00	0.00
700.00	3.50	190.00	699.47	-18.79	-3.31	-18.78	0.00	0.00	0.00
800.00	3.50	190.00	799.29	-24.80	-4.37	-24.79	0.00	0.00	0.00
900.00	3.50	190.00	899.10	-30.81	-5.43	-30.80	0.00	0.00	0.00
1,000.00	3.50	190.00	998.91	-36.83	-6.49	-36.80	0.00	0.00	0.00
1,100.00	3.50	190.00	1,098.73	-42.84	-7.55	-42.81	0.00	0.00	0.00
1,200.00	3.50	190.00	1,198.54	-48.85	-8.61	-48.82	0.00	0.00	0.00
1,300.00	3.50	190.00	1,298.35	-54.86	-9.67	-54.83	0.00	0.00	0.00
1,400.00	3.50	190.00	1,398.17	-60.87	-10.73	-60.84	0.00	0.00	0.00
1,500.00	3.50	190.00	1,497.98	-66.89	-11.79	-66.85	0.00	0.00	0.00
1,552.12	3.50	190.00	1,550.00	-70.02	-12.35	-69.98	0.00	0.00	0.00
Upper Pierre									
1,600.00	3.50	190.00	1,597.79	-72.90	-12.85	-72.86	0.00	0.00	0.00
1,700.00	3.50	190.00	1,697.61	-78.91	-13.91	-78.87	0.00	0.00	0.00
1,800.00	3.50	190.00	1,797.42	-84.92	-14.97	-84.87	0.00	0.00	0.00
1,900.00	3.50	190.00	1,897.23	-90.93	-16.03	-90.88	0.00	0.00	0.00
2,000.00	3.50	190.00	1,997.05	-96.95	-17.09	-96.89	0.00	0.00	0.00
2,100.00	3.50	190.00	2,096.86	-102.96	-18.15	-102.90	0.00	0.00	0.00
2,200.00	3.50	190.00	2,196.67	-108.97	-19.21	-108.91	0.00	0.00	0.00
2,300.00	3.50	190.00	2,296.49	-114.98	-20.27	-114.92	0.00	0.00	0.00
2,400.00	3.50	190.00	2,396.30	-121.00	-21.33	-120.93	0.00	0.00	0.00
2,500.00	3.50	190.00	2,496.11	-127.01	-22.39	-126.94	0.00	0.00	0.00
2,600.00	3.50	190.00	2,595.93	-133.02	-23.45	-132.94	0.00	0.00	0.00
2,700.00	3.50	190.00	2,695.74	-139.03	-24.52	-138.95	0.00	0.00	0.00
2,800.00	3.50	190.00	2,795.55	-145.04	-25.58	-144.96	0.00	0.00	0.00
2,900.00	3.50	190.00	2,895.37	-151.06	-26.64	-150.97	0.00	0.00	0.00
3,000.00	3.50	190.00	2,995.18	-157.07	-27.70	-156.98	0.00	0.00	0.00
3,100.00	3.50	190.00	3,095.00	-163.08	-28.76	-162.99	0.00	0.00	0.00
3,200.00	3.50	190.00	3,194.81	-169.09	-29.82	-169.00	0.00	0.00	0.00
3,300.00	3.50	190.00	3,294.62	-175.10	-30.88	-175.01	0.00	0.00	0.00
3,375.00	3.50	190.00	3,369.48	-179.61	-31.67	-179.51	0.00	0.00	0.00
Drop 2°/100'									
3,400.00	3.00	190.00	3,394.44	-181.01	-31.92	-180.91	2.00	-2.00	0.00
3,500.00	1.00	190.00	3,494.38	-184.45	-32.52	-184.34	2.00	-2.00	0.00
3,505.63	0.89	190.00	3,500.00	-184.54	-32.54	-184.43	2.00	-2.00	0.00
Hygiene									
3,550.00	0.00	0.00	3,544.37	-184.88	-32.60	-184.77	2.00	-2.00	383.10
Hold Vertical									
3,600.00	0.00	0.00	3,594.37	-184.88	-32.60	-184.77	0.00	0.00	0.00
3,655.63	0.00	0.00	3,650.00	-184.88	-32.60	-184.77	0.00	0.00	0.00
Lower Pierre									
3,700.00	0.00	0.00	3,694.37	-184.88	-32.60	-184.77	0.00	0.00	0.00
3,800.00	0.00	0.00	3,794.37	-184.88	-32.60	-184.77	0.00	0.00	0.00
3,900.00	0.00	0.00	3,894.37	-184.88	-32.60	-184.77	0.00	0.00	0.00



WOG

Planning Report

Database:	LandmarkEDM	Local Co-ordinate Reference:	Well Razor #25P-2415
Company:	Whiting Petroleum Corp.	TVD Reference:	KBE @ 4762.00usft (Original Well Elev)
Project:	Weld County, CO	MD Reference:	KBE @ 4762.00usft (Original Well Elev)
Site:	Sec 25-T10N-R58W	North Reference:	True
Well:	Razor #25P-2415	Survey Calculation Method:	Minimum Curvature
Wellbore:	Hz		
Design:	APD		

Planned Survey									
Measured Depth (usft)	Inclination (°)	Azimuth (°)	Vertical Depth (usft)	+N/-S (usft)	+E/-W (usft)	Vertical Section (usft)	Dogleg Rate (°/100ft)	Build Rate (°/100ft)	Turn Rate (°/100ft)
4,000.00	0.00	0.00	3,994.37	-184.88	-32.60	-184.77	0.00	0.00	0.00
4,100.00	0.00	0.00	4,094.37	-184.88	-32.60	-184.77	0.00	0.00	0.00
4,200.00	0.00	0.00	4,194.37	-184.88	-32.60	-184.77	0.00	0.00	0.00
4,300.00	0.00	0.00	4,294.37	-184.88	-32.60	-184.77	0.00	0.00	0.00
4,400.00	0.00	0.00	4,394.37	-184.88	-32.60	-184.77	0.00	0.00	0.00
4,500.00	0.00	0.00	4,494.37	-184.88	-32.60	-184.77	0.00	0.00	0.00
4,600.00	0.00	0.00	4,594.37	-184.88	-32.60	-184.77	0.00	0.00	0.00
4,700.00	0.00	0.00	4,694.37	-184.88	-32.60	-184.77	0.00	0.00	0.00
4,800.00	0.00	0.00	4,794.37	-184.88	-32.60	-184.77	0.00	0.00	0.00
4,900.00	0.00	0.00	4,894.37	-184.88	-32.60	-184.77	0.00	0.00	0.00
5,000.00	0.00	0.00	4,994.37	-184.88	-32.60	-184.77	0.00	0.00	0.00
5,014.76	0.00	0.00	5,009.13	-184.88	-32.60	-184.77	0.00	0.00	0.00
KOP, Build 11°/100'									
5,050.00	3.88	0.00	5,044.35	-183.68	-32.60	-183.58	11.00	11.00	0.00
5,100.00	9.38	0.00	5,093.99	-177.92	-32.60	-177.81	11.00	11.00	0.00
5,150.00	14.88	0.00	5,142.86	-167.42	-32.60	-167.31	11.00	11.00	0.00
5,200.00	20.38	0.00	5,190.49	-152.28	-32.60	-152.18	11.00	11.00	0.00
5,250.00	25.88	0.00	5,236.46	-132.65	-32.60	-132.55	11.00	11.00	0.00
5,300.00	31.38	0.00	5,280.33	-108.71	-32.60	-108.60	11.00	11.00	0.00
5,350.00	36.88	0.00	5,321.70	-80.67	-32.60	-80.56	11.00	11.00	0.00
5,400.00	42.38	0.00	5,360.20	-48.79	-32.59	-48.68	11.00	11.00	0.00
5,450.00	47.88	0.00	5,395.46	-13.37	-32.59	-13.26	11.00	11.00	0.00
5,500.00	53.38	0.00	5,427.17	25.27	-32.59	25.37	11.00	11.00	0.00
5,529.34	56.60	0.00	5,444.00	49.30	-32.59	49.40	11.00	11.00	0.00
P200 Marker									
5,550.00	58.88	0.00	5,455.03	66.77	-32.59	66.87	11.00	11.00	0.00
5,567.87	60.84	0.00	5,464.00	82.22	-32.59	82.32	11.00	11.00	0.00
P300 Marker									
5,600.00	64.38	0.00	5,478.78	110.74	-32.59	110.85	11.00	11.00	0.00
5,602.84	64.69	0.00	5,480.00	113.31	-32.59	113.41	11.00	11.00	0.00
P350 Marker									
5,638.14	68.57	0.00	5,494.00	145.71	-32.59	145.81	11.00	11.00	0.00
Sharon Springs									
5,649.40	69.81	0.00	5,498.00	156.23	-32.59	156.34	11.00	11.00	0.00
Niobrara									
5,650.00	69.88	0.00	5,498.21	156.79	-32.59	156.90	11.00	11.00	0.00
5,700.00	75.38	0.00	5,513.13	204.49	-32.59	204.60	11.00	11.00	0.00
5,707.62	76.22	0.00	5,515.00	211.88	-32.59	211.99	11.00	11.00	0.00
Top A Chalk									
5,750.00	80.88	0.00	5,523.41	253.40	-32.59	253.51	11.00	11.00	0.00
5,800.00	86.38	0.00	5,528.96	303.08	-32.58	303.18	11.00	11.00	0.00
5,832.94	90.00	0.00	5,530.00	335.99	-32.58	336.10	11.00	11.00	0.00
LP @ 90° Inc, Hold - 7"									
5,900.00	90.00	0.00	5,530.00	403.05	-32.58	403.16	0.00	0.00	0.00
6,000.00	90.00	0.00	5,530.00	503.05	-32.58	503.16	0.00	0.00	0.00
6,100.00	90.00	0.00	5,530.00	603.05	-32.57	603.16	0.00	0.00	0.00
6,200.00	90.00	0.00	5,530.00	703.05	-32.57	703.15	0.00	0.00	0.00
6,300.00	90.00	0.00	5,530.00	803.05	-32.57	803.15	0.00	0.00	0.00
6,400.00	90.00	0.00	5,530.00	903.05	-32.57	903.15	0.00	0.00	0.00
6,500.00	90.00	0.00	5,530.00	1,003.05	-32.56	1,003.15	0.00	0.00	0.00
6,600.00	90.00	0.00	5,530.00	1,103.05	-32.56	1,103.15	0.00	0.00	0.00
6,700.00	90.00	0.00	5,530.00	1,203.05	-32.56	1,203.15	0.00	0.00	0.00
6,800.00	90.00	0.00	5,530.00	1,303.05	-32.55	1,303.15	0.00	0.00	0.00



WOG

Planning Report

Database:	LandmarkEDM	Local Co-ordinate Reference:	Well Razor #25P-2415
Company:	Whiting Petroleum Corp.	TVD Reference:	KBE @ 4762.00usft (Original Well Elev)
Project:	Weld County, CO	MD Reference:	KBE @ 4762.00usft (Original Well Elev)
Site:	Sec 25-T10N-R58W	North Reference:	True
Well:	Razor #25P-2415	Survey Calculation Method:	Minimum Curvature
Wellbore:	Hz		
Design:	APD		

Planned Survey									
Measured Depth (usft)	Inclination (°)	Azimuth (°)	Vertical Depth (usft)	+N/-S (usft)	+E/-W (usft)	Vertical Section (usft)	Dogleg Rate (°/100ft)	Build Rate (°/100ft)	Turn Rate (°/100ft)
6,900.00	90.00	0.00	5,530.00	1,403.05	-32.55	1,403.15	0.00	0.00	0.00
7,000.00	90.00	0.00	5,530.00	1,503.05	-32.55	1,503.15	0.00	0.00	0.00
7,100.00	90.00	0.00	5,530.00	1,603.05	-32.54	1,603.15	0.00	0.00	0.00
7,200.00	90.00	0.00	5,530.00	1,703.05	-32.54	1,703.15	0.00	0.00	0.00
7,300.00	90.00	0.00	5,530.00	1,803.05	-32.54	1,803.15	0.00	0.00	0.00
7,400.00	90.00	0.00	5,530.00	1,903.05	-32.54	1,903.15	0.00	0.00	0.00
7,500.00	90.00	0.00	5,530.00	2,003.05	-32.53	2,003.15	0.00	0.00	0.00
7,600.00	90.00	0.00	5,530.00	2,103.05	-32.53	2,103.15	0.00	0.00	0.00
7,700.00	90.00	0.00	5,530.00	2,203.05	-32.53	2,203.15	0.00	0.00	0.00
7,800.00	90.00	0.00	5,530.00	2,303.05	-32.52	2,303.15	0.00	0.00	0.00
7,900.00	90.00	0.00	5,530.00	2,403.05	-32.52	2,403.15	0.00	0.00	0.00
8,000.00	90.00	0.00	5,530.00	2,503.05	-32.52	2,503.15	0.00	0.00	0.00
8,100.00	90.00	0.00	5,530.00	2,603.05	-32.51	2,603.15	0.00	0.00	0.00
8,200.00	90.00	0.00	5,530.00	2,703.05	-32.51	2,703.14	0.00	0.00	0.00
8,300.00	90.00	0.00	5,530.00	2,803.05	-32.51	2,803.14	0.00	0.00	0.00
8,400.00	90.00	0.00	5,530.00	2,903.05	-32.51	2,903.14	0.00	0.00	0.00
8,500.00	90.00	0.00	5,530.00	3,003.05	-32.50	3,003.14	0.00	0.00	0.00
8,600.00	90.00	0.00	5,530.00	3,103.05	-32.50	3,103.14	0.00	0.00	0.00
8,700.00	90.00	0.00	5,530.00	3,203.05	-32.50	3,203.14	0.00	0.00	0.00
8,800.00	90.00	0.00	5,530.00	3,303.05	-32.49	3,303.14	0.00	0.00	0.00
8,900.00	90.00	0.00	5,530.00	3,403.05	-32.49	3,403.14	0.00	0.00	0.00
9,000.00	90.00	0.00	5,530.00	3,503.05	-32.49	3,503.14	0.00	0.00	0.00
9,100.00	90.00	0.00	5,530.00	3,603.05	-32.48	3,603.14	0.00	0.00	0.00
9,200.00	90.00	0.00	5,530.00	3,703.05	-32.48	3,703.14	0.00	0.00	0.00
9,300.00	90.00	0.00	5,530.00	3,803.05	-32.48	3,803.14	0.00	0.00	0.00
9,400.00	90.00	0.00	5,530.00	3,903.05	-32.47	3,903.14	0.00	0.00	0.00
9,500.00	90.00	0.00	5,530.00	4,003.05	-32.47	4,003.14	0.00	0.00	0.00
9,600.00	90.00	0.00	5,530.00	4,103.05	-32.47	4,103.14	0.00	0.00	0.00
9,700.00	90.00	0.00	5,530.00	4,203.05	-32.47	4,203.14	0.00	0.00	0.00
9,800.00	90.00	0.00	5,530.00	4,303.05	-32.46	4,303.14	0.00	0.00	0.00
9,900.00	90.00	0.00	5,530.00	4,403.05	-32.46	4,403.14	0.00	0.00	0.00
10,000.00	90.00	0.00	5,530.00	4,503.05	-32.46	4,503.14	0.00	0.00	0.00
10,100.00	90.00	0.00	5,530.00	4,603.05	-32.45	4,603.13	0.00	0.00	0.00
10,200.00	90.00	0.00	5,530.00	4,703.05	-32.45	4,703.13	0.00	0.00	0.00
10,300.00	90.00	0.00	5,530.00	4,803.05	-32.45	4,803.13	0.00	0.00	0.00
10,400.00	90.00	0.00	5,530.00	4,903.05	-32.44	4,903.13	0.00	0.00	0.00
10,500.00	90.00	0.00	5,530.00	5,003.05	-32.44	5,003.13	0.00	0.00	0.00
10,600.00	90.00	0.00	5,530.00	5,103.05	-32.44	5,103.13	0.00	0.00	0.00
10,700.00	90.00	0.00	5,530.00	5,203.05	-32.44	5,203.13	0.00	0.00	0.00
10,800.00	90.00	0.00	5,530.00	5,303.05	-32.43	5,303.13	0.00	0.00	0.00
10,900.00	90.00	0.00	5,530.00	5,403.05	-32.43	5,403.13	0.00	0.00	0.00
11,000.00	90.00	0.00	5,530.00	5,503.05	-32.43	5,503.13	0.00	0.00	0.00
11,100.00	90.00	0.00	5,530.00	5,603.05	-32.42	5,603.13	0.00	0.00	0.00
11,200.00	90.00	0.00	5,530.00	5,703.05	-32.42	5,703.13	0.00	0.00	0.00
11,300.00	90.00	0.00	5,530.00	5,803.05	-32.42	5,803.13	0.00	0.00	0.00
11,400.00	90.00	0.00	5,530.00	5,903.05	-32.41	5,903.13	0.00	0.00	0.00
11,500.00	90.00	0.00	5,530.00	6,003.05	-32.41	6,003.13	0.00	0.00	0.00
11,600.00	90.00	0.00	5,530.00	6,103.05	-32.41	6,103.13	0.00	0.00	0.00
11,700.00	90.00	0.00	5,530.00	6,203.05	-32.41	6,203.13	0.00	0.00	0.00
11,800.00	90.00	0.00	5,530.00	6,303.05	-32.40	6,303.13	0.00	0.00	0.00
11,900.00	90.00	0.00	5,530.00	6,403.05	-32.40	6,403.13	0.00	0.00	0.00
12,000.00	90.00	0.00	5,530.00	6,503.05	-32.40	6,503.12	0.00	0.00	0.00
12,100.00	90.00	0.00	5,530.00	6,603.05	-32.39	6,603.12	0.00	0.00	0.00
12,200.00	90.00	0.00	5,530.00	6,703.05	-32.39	6,703.12	0.00	0.00	0.00



WOG

Planning Report

Database:	LandmarkEDM	Local Co-ordinate Reference:	Well Razor #25P-2415
Company:	Whiting Petroleum Corp.	TVD Reference:	KBE @ 4762.00usft (Original Well Elev)
Project:	Weld County, CO	MD Reference:	KBE @ 4762.00usft (Original Well Elev)
Site:	Sec 25-T10N-R58W	North Reference:	True
Well:	Razor #25P-2415	Survey Calculation Method:	Minimum Curvature
Wellbore:	Hz		
Design:	APD		

Planned Survey									
Measured Depth (usft)	Inclination (°)	Azimuth (°)	Vertical Depth (usft)	+N/-S (usft)	+E/-W (usft)	Vertical Section (usft)	Dogleg Rate (°/100ft)	Build Rate (°/100ft)	Turn Rate (°/100ft)
12,300.00	90.00	0.00	5,530.00	6,803.05	-32.39	6,803.12	0.00	0.00	0.00
12,400.00	90.00	0.00	5,530.00	6,903.05	-32.38	6,903.12	0.00	0.00	0.00
12,500.00	90.00	0.00	5,530.00	7,003.05	-32.38	7,003.12	0.00	0.00	0.00
12,600.00	90.00	0.00	5,530.00	7,103.05	-32.38	7,103.12	0.00	0.00	0.00
12,700.00	90.00	0.00	5,530.00	7,203.05	-32.37	7,203.12	0.00	0.00	0.00
12,800.00	90.00	0.00	5,530.00	7,303.05	-32.37	7,303.12	0.00	0.00	0.00
12,900.00	90.00	0.00	5,530.00	7,403.05	-32.37	7,403.12	0.00	0.00	0.00
13,000.00	90.00	0.00	5,530.00	7,503.05	-32.37	7,503.12	0.00	0.00	0.00
13,100.00	90.00	0.00	5,530.00	7,603.05	-32.36	7,603.12	0.00	0.00	0.00
13,200.00	90.00	0.00	5,530.00	7,703.05	-32.36	7,703.12	0.00	0.00	0.00
13,300.00	90.00	0.00	5,530.00	7,803.05	-32.36	7,803.12	0.00	0.00	0.00
13,400.00	90.00	0.00	5,530.00	7,903.05	-32.35	7,903.12	0.00	0.00	0.00
13,500.00	90.00	0.00	5,530.00	8,003.05	-32.35	8,003.12	0.00	0.00	0.00
13,600.00	90.00	0.00	5,530.00	8,103.05	-32.35	8,103.12	0.00	0.00	0.00
13,700.00	90.00	0.00	5,530.00	8,203.05	-32.34	8,203.12	0.00	0.00	0.00
13,800.00	90.00	0.00	5,530.00	8,303.05	-32.34	8,303.12	0.00	0.00	0.00
13,900.00	90.00	0.00	5,530.00	8,403.05	-32.34	8,403.12	0.00	0.00	0.00
14,000.00	90.00	0.00	5,530.00	8,503.05	-32.34	8,503.11	0.00	0.00	0.00
14,100.00	90.00	0.00	5,530.00	8,603.05	-32.33	8,603.11	0.00	0.00	0.00
14,200.00	90.00	0.00	5,530.00	8,703.05	-32.33	8,703.11	0.00	0.00	0.00
14,300.00	90.00	0.00	5,530.00	8,803.05	-32.33	8,803.11	0.00	0.00	0.00
14,400.00	90.00	0.00	5,530.00	8,903.05	-32.32	8,903.11	0.00	0.00	0.00
14,500.00	90.00	0.00	5,530.00	9,003.05	-32.32	9,003.11	0.00	0.00	0.00
14,600.00	90.00	0.00	5,530.00	9,103.05	-32.32	9,103.11	0.00	0.00	0.00
14,700.00	90.00	0.00	5,530.00	9,203.05	-32.31	9,203.11	0.00	0.00	0.00
14,800.00	90.00	0.00	5,530.00	9,303.05	-32.31	9,303.11	0.00	0.00	0.00
14,900.00	90.00	0.00	5,530.00	9,403.05	-32.31	9,403.11	0.00	0.00	0.00
15,000.00	90.00	0.00	5,530.00	9,503.05	-32.31	9,503.11	0.00	0.00	0.00
15,100.00	90.00	0.00	5,530.00	9,603.05	-32.30	9,603.11	0.00	0.00	0.00
15,200.00	90.00	0.00	5,530.00	9,703.05	-32.30	9,703.11	0.00	0.00	0.00
15,300.00	90.00	0.00	5,530.00	9,803.05	-32.30	9,803.11	0.00	0.00	0.00
15,400.00	90.00	0.00	5,530.00	9,903.05	-32.29	9,903.11	0.00	0.00	0.00
15,500.00	90.00	0.00	5,530.00	10,003.05	-32.29	10,003.11	0.00	0.00	0.00
15,600.00	90.00	0.00	5,530.00	10,103.05	-32.29	10,103.11	0.00	0.00	0.00
15,631.67	90.00	0.00	5,530.00	10,134.73	-32.29	10,134.78	0.00	0.00	0.00
TD at 15631.67' MD									

Design Targets									
Target Name	Dip Angle (°)	Dip Dir. (°)	TVD (usft)	+N/-S (usft)	+E/-W (usft)	Northing (usft)	Easting (usft)	Latitude	Longitude
- hit/miss target									
- Shape									
PBHL 2415	0.00	0.00	5,530.00	10,134.73	-32.29	1,550,180.30	3,468,921.37	40° 49' 52.770 N	103° 48' 19.580 W
- plan hits target center									
- Point									

Casing Points					
Measured Depth (usft)	Vertical Depth (usft)	Name	Casing Diameter (in)	Hole Diameter (in)	
5,832.94	5,530.00	7"	7.000	8.750	



WOG Planning Report

Database:	LandmarkEDM	Local Co-ordinate Reference:	Well Razor #25P-2415
Company:	Whiting Petroleum Corp.	TVD Reference:	KBE @ 4762.00usft (Original Well Elev)
Project:	Weld County, CO	MD Reference:	KBE @ 4762.00usft (Original Well Elev)
Site:	Sec 25-T10N-R58W	North Reference:	True
Well:	Razor #25P-2415	Survey Calculation Method:	Minimum Curvature
Wellbore:	Hz		
Design:	APD		

Formations						
Measured Depth (usft)	Vertical Depth (usft)	Name	Lithology	Dip (°)	Dip Direction (°)	
1,552.12	1,550.00	Upper Pierre				
3,505.63	3,500.00	Hygiene				
3,655.63	3,650.00	Lower Pierre				
5,529.34	5,444.00	P200 Marker				
5,567.87	5,464.00	P300 Marker				
5,602.84	5,480.00	P350 Marker				
5,638.14	5,494.00	Sharon Springs				
5,649.40	5,498.00	Niobrara				
5,707.62	5,515.00	Top A Chalk				

Plan Annotations				
Measured Depth (usft)	Vertical Depth (usft)	Local Coordinates		Comment
		+N/-S (usft)	+E/-W (usft)	
300.00	300.00	0.00	0.00	Build 2°/100'
475.00	474.89	-5.26	-0.93	Hold 3.50° Inc
3,375.00	3,369.48	-179.61	-31.67	Drop 2°/100'
3,550.00	3,544.37	-184.88	-32.60	Hold Vertical
5,014.76	5,009.13	-184.88	-32.60	KOP, Build 11°/100'
5,832.94	5,530.00	335.99	-32.58	LP @ 90° Inc, Hold
15,631.67	5,530.00	10,134.73	-32.29	TD at 15631.67' MD