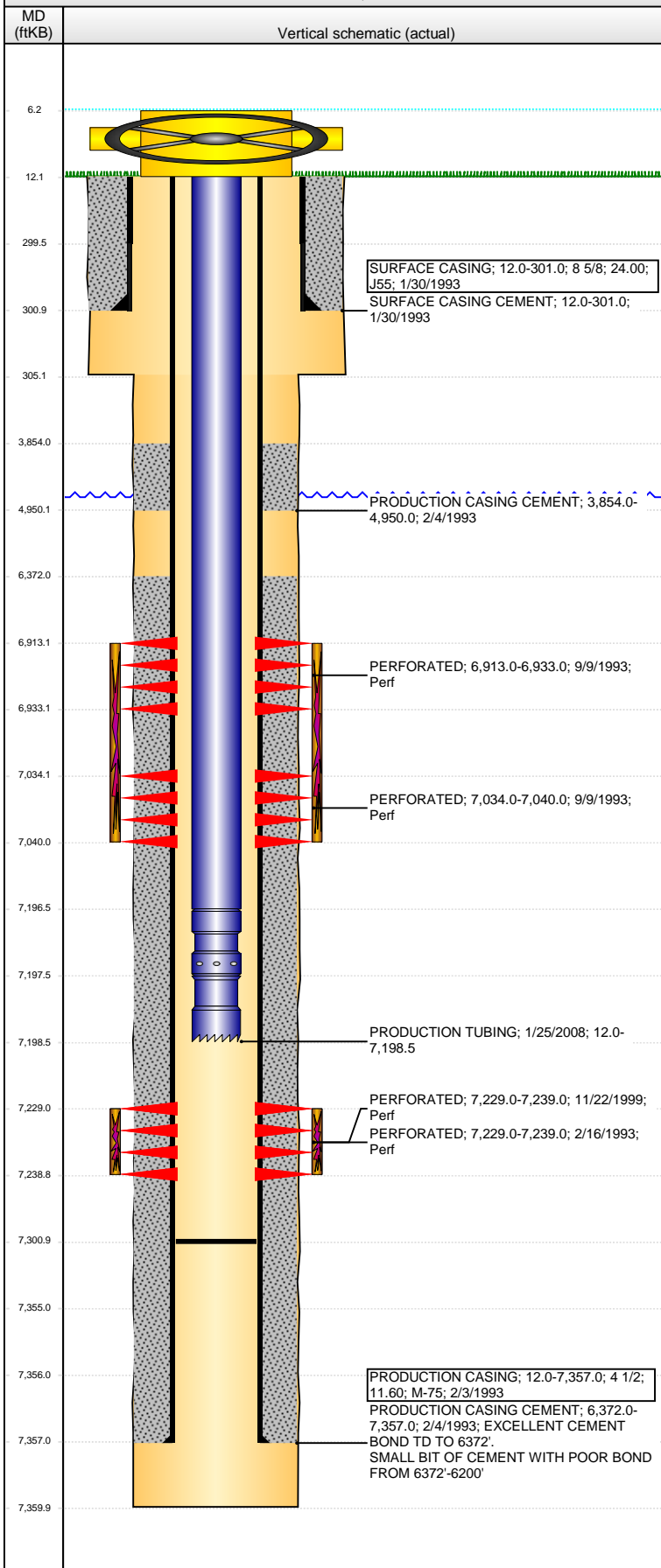


Well Name: API 41-15

VERTICAL - ORIGINAL HOLE, 10/8/2015 9:54:04 AM



## Well Header

API	Business Unit	District	Well Config
05-123-16562	DJ BASIN	15	VERTICAL
Original KB Elevation (ft)	KB - GL / MSL (ftKB)	Spud Date	P & A Date
4,740.00	12.00	1/29/1993	
Comment			

## Directions To Well

## Congressional Location

Quarter 1	Quarter 2	Quarter 3	Quarter 4	Section	Township	Twship N...	Range	Rng E/W Dir
		NE	NE	15	4	N	66	W

## Bottom Hole Location

North-South Distance (ft)	From N or S Line	East-West Distance (ft)	From E or W Line

## Plug Back Total Depths

Date	Depth (ftKB)	Method	Com
2/4/1993	7,321.0	CASING TALLY	
2/15/1993	7,296.0	CASED HOLE LOG	DEPTH LOGGER ON CBL
8/25/2005	7,301.0	TAG	MOST RECENT CLEANOUT

## Wellbore Sections

Section Des	Size (in)	Act Top, MD (ftKB)	Act Btm, MD (ftKB)
SURFACE	12 1/4	12.0	305.0
PRODUCTION	7 7/8	305.0	7,360.0

## Zone Statuses

Zone Name	Status Date	Status	Fluid Type	Job	Prod Method
NIOBRARA	10/27/1993	PR		RECOMPLETI...	
CODELL	2/26/1993	PR		DRILLING/CO...	
CODELL	12/3/1999	PR		RE-FRAC, 11/2...	

## Casing Strings

### SURFACE CASING, 301.0ftKB

Casing Description	Run Date	OD (in)	Wt/Len (l...	Grade	Top, MD (ft...	MD (ftKB)
SURFACE CASING	1/30/1993	8 5/8	24.00	J55	12.0	301.0

### PRODUCTION CASING, 7,357.0ftKB

Casing Description	Run Date	OD (in)	Wt/Len (l...	Grade	Top, MD (ft...	MD (ftKB)
PRODUCTION CASING	2/3/1993	4 1/2	11.60	M-75	12.0	7,357.0

## Cement

Description	Top Depth (ftKB)	Bottom Depth (ftKB)
SURFACE CASING CEMENT	12.0	301.0
PRODUCTION CASING CEMENT	3,854.0	4,950.0
PRODUCTION CASING CEMENT	6,372.0	7,357.0

## Tubing Strings

Tubing Description	Run Date	String...	ID (in)	Wt (lb/ft)	Grade	Len (ft)	Set De...
PRODUCTION TUBING	8/25/2005	2 3/8		4.70	J55	7,188.00	
Tubing Description	Run Date	String...	ID (in)	Wt (lb/ft)	Grade	Len (ft)	Set De...
PRODUCTION TUBING	1/25/2008	2 3/8	1.995	4.70	J-55	7,186.51	

## Tubing Components

Item Des	OD (in)	Wt (lb/ft)	Grade	Jts	Len (ft)	Btm (ftKB)	Btm (TVD) (ftKB)
Tubing	2 3/8	4.70	J-55	231	7,184.51	7,196.5	
Seal Nipple	2 3/8		J55	1	1.00	7,197.5	
Notched collar	2 3/8		J55	1	1.00	7,198.5	

## Perforation Data

Zone	Bnch/St g	Entered Shot Total	Top (ftKB)	Btm (ftKB)	Date
CODELL, ORIGINAL HOLE	A	20	6,913.00	6,933.00	9/9/1993
NIOBRARA, ORIGINAL HOLE	B	6	7,034.00	7,040.00	9/9/1993
CODELL, ORIGINAL HOLE		20	7,229.00	7,239.00	2/16/1993
CODELL, ORIGINAL HOLE		40	7,229.00	7,239.00	11/22/1999

## Stimulations & Treatments

Date	Zone	Primary Job Type
2/18/1993	CODELL, ORIGINAL HOLE	DRILLING/COMPLETION - ORIGINAL
Technical Result	Tech Result Details	Tech Result Note

Comment

**Well Name: API 41-15**

VERTICAL - ORIGINAL HOLE, 10/8/2015 9:54:07 AM

## Stimulations & Treatments

Date 9/10/1993	Zone NIOBRARA, ORIGINAL HOLE	Primary Job Type RECOMPLETION
Technical Result	Tech Result Details	Tech Result Note
Comment		

Date 11/29/1999	Zone CODELL, ORIGINAL HOLE	Primary Job Type RE-FRAC
Technical Result	Tech Result Details	Tech Result Note
Comment		

## Other In Hole

Run Date	Des	OD (in)	Top (ftKB)	Btm (ftKB)

## Logs

Date	Type	Top, MD (ftKB)	Btm, MD (ftKB)
2/3/1993			

