

1801 Broadway
Suite 500
Denver, Colorado 80202



Callie Fiddes
Regulatory Technician
Tel: 303.398.0550
E-mail: cfiddes@gwogco.com

March 24, 2014

Colorado Oil and Gas Conservation Commission
1120 Lincoln Street, Suite 801
Denver, Colorado 80203

RE: **Proposed Wellbore Spacing Unit**
Kodak North FD 27-062HN

Niobrara New Drill
Township 6 North, Range 67 West, 6th P.M.
Section 26
Weld County, Colorado

Dear Director:

Great Western Operating Company, LLC is planning to drill the above captioned well in accordance with the provisions of COGCC Rule 318(l)e(2).

Great Western proposed wellbore spacing unit consists of:

N2 NW/4 Sec 26
N2N2 Sec 27

240 acres

Great Western Operating Company, LLC respectfully requests that the COGCC review the enclosed map illustrating the proposed wellbore spacing unit.

Respectfully,

Callie Fiddes

Callie Fiddes
Regulatory Technician
Great Western Operating Company, LLC

N2NE Sec 26 N2N2 Sec 27 240

T6N, R67W, 6th P.M.

GREAT WESTERN OIL & GAS COMPANY

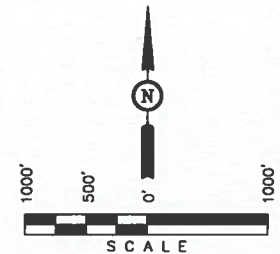
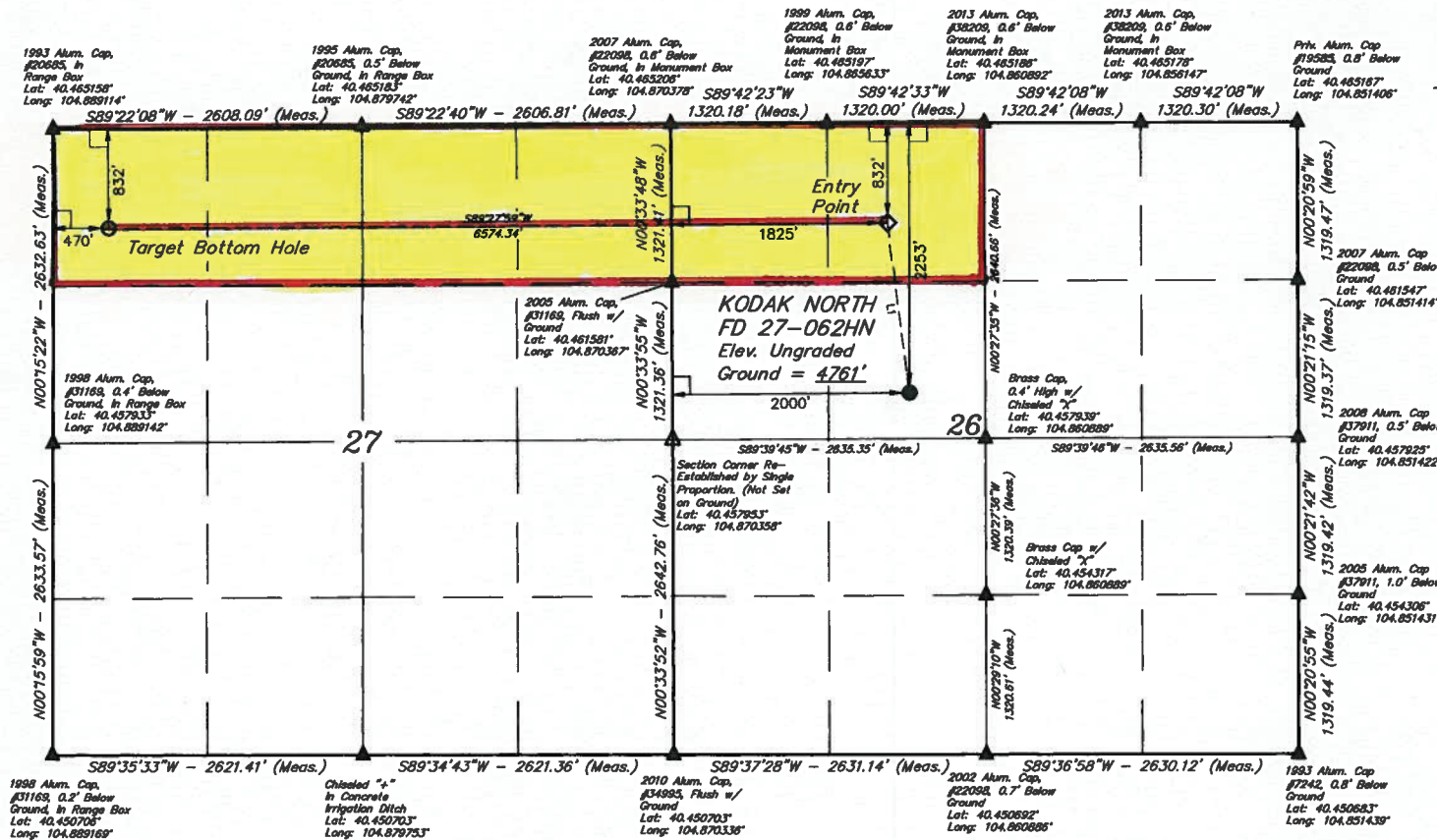
Well location, KODAK NORTH FD 27-062HN, located as shown in the SE 1/4 NW 1/4 of Section 26, T6N, R67W, 6th P.M., Weld County, Colorado.

BASIS OF ELEVATION

USGS COOPERATIVE BASE NETWORK CONTROL STATION, DESIGNATION 'VERMILYEA'. NGS DATA SHEET LISTS THE NAVD 88 ELEVATION AS BEING 5026 FEET

BASIS OF BEARINGS

BASIS OF BEARINGS IS A G.P.S. OBSERVATION.



LINE TABLE		
LINE	DIRECTION	LENGTH
L1	N07°34'19\"W	1432.05'

LEGEND:

- └─ = 90° SYMBOL
- = PROPOSED WELL HEAD.
- = TARGET BOTTOM HOLE.
- ◆ = ENTRY POINT.
- ▲ = SECTION CORNERS LOCATED.
- △ = SECTION CORNERS RE-ESTABLISHED. (Not Set on Ground.)

NAVD 88 (TARGET BOTTOM HOLE)	NAVD 88 (ENTRY POINT)	NAVD 88 (SURFACE LOCATION)
LATITUDE = 40°27'46.36\" (40.462878)	LATITUDE = 40°27'46.47\" (40.462908)	LATITUDE = 40°27'32.44\" (40.459011)
LONGITUDE = 104°53'14.76\" (104.887433)	LONGITUDE = 104°51'48.73\" (104.863814)	LONGITUDE = 104°51'47.43\" (104.863175)
NAVD 88 (TARGET BOTTOM HOLE)	NAVD 88 (ENTRY POINT)	NAVD 88 (SURFACE LOCATION)
LATITUDE = 40°27'46.43\" (40.462887)	LATITUDE = 40°27'46.54\" (40.462898)	LATITUDE = 40°27'32.56\" (40.459028)
LONGITUDE = 104°53'12.86\" (104.886906)	LONGITUDE = 104°51'47.83\" (104.863286)	LONGITUDE = 104°51'48.54\" (104.862650)

CERTIFICATE OF RECORD
THIS IS TO CERTIFY THAT THE ABOVE MAP WAS PREPARED FROM FIELD NOTES OF ACTUAL SURVEYING MADE BY ME OR UNDER MY SUPERVISION AND THAT THE SAME ARE TRUE AND CORRECT TO THE BEST OF MY KNOWLEDGE AND BELIEF.
REGISTERED LAND SURVEYOR
RECORDING NO. 28285
STATE OF COLORADO
JUL 13 2013

UTAH ENGINEERING & LAND SURVEYING
85 SOUTH 200 EAST - VERNAL, UTAH 84078
(435) 789-1017

SCALE 1" = 1000'	DATE SURVEYED: 10-21-13	DATE DRAWN: 10-30-13
PARTY D.N. C.M. G.W. J.W.	REFERENCES G.L.O. PLAT	WEATHER COOL
FILE GREAT WESTERN OIL & GAS COMPANY		