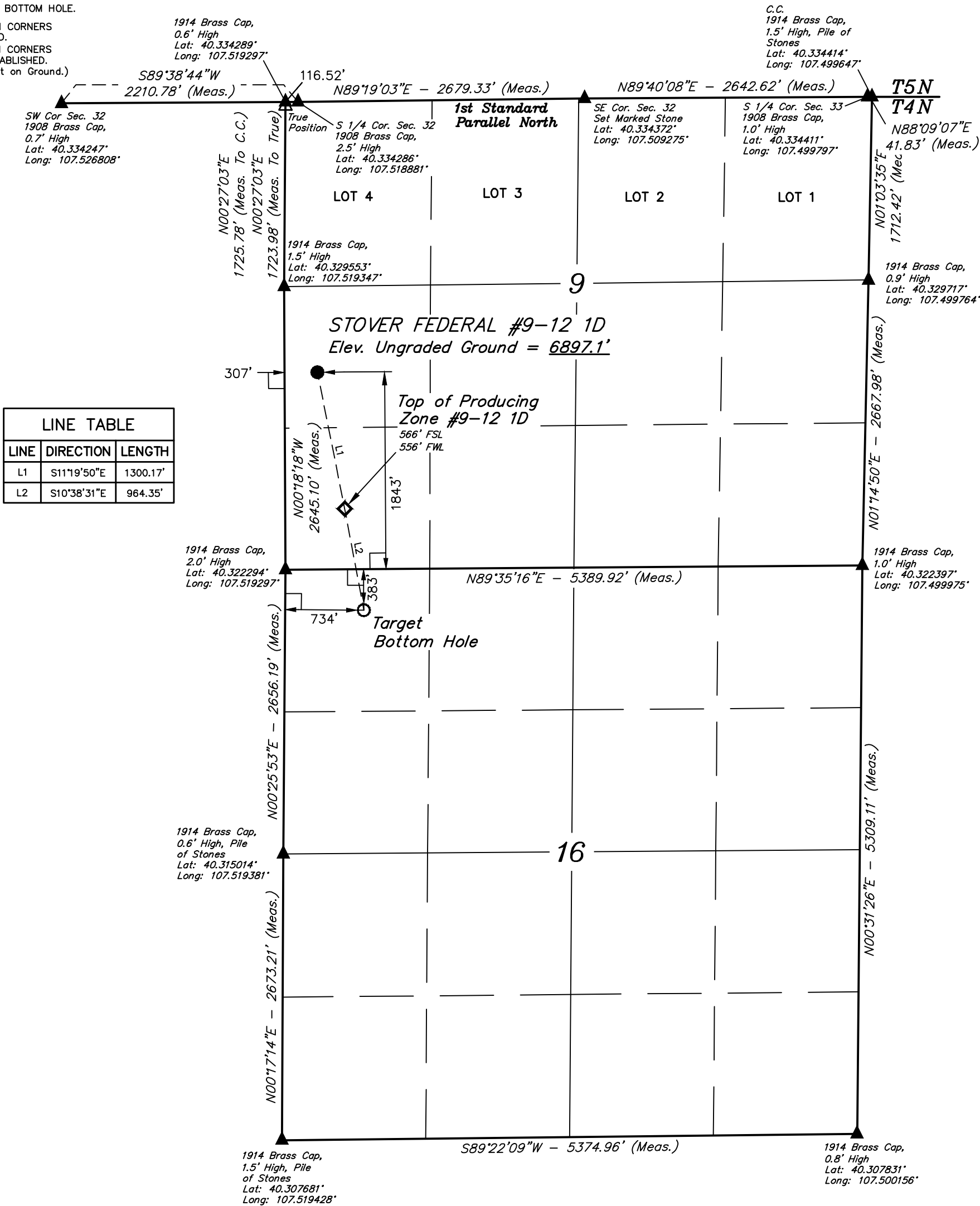


LEGEND:

- = 90° SYMBOL
- = PROPOSED WELLHEAD.
- = LANDING POINT
- = TARGET BOTTOM HOLE.
- = SECTION CORNERS LOCATED.
- = SECTION CORNERS RE-ESTABLISHED. (Not Set on Ground.)

T4N, R90W, 6th P.M.



LINE TABLE		
LINE	DIRECTION	LENGTH
L1	S11°19'50"E	1300.17'
L2	S10°38'31"E	964.35'



PDOP = 2.0

NAD 83 (TARGET BOTTOM HOLE)	NAD 83 (TOP OF PRODUCING ZONE)	NAD 83 (SURFACE LOCATION)
LATITUDE = 40°19'16.53" (40.321258)	LATITUDE = 40°19'25.89" (40.323858)	LATITUDE = 40°19'38.48" (40.327356)
LONGITUDE = 107°31'00.04" (107.516678)	LONGITUDE = 107°31'02.34" (107.517317)	LONGITUDE = 107°31'05.63" (107.518231)
NAD 27 (TARGET BOTTOM HOLE)	NAD 27 (TOP OF PRODUCING ZONE)	NAD 27 (SURFACE LOCATION)
LATITUDE = 40°19'16.62" (40.321283)	LATITUDE = 40°19'25.98" (40.323883)	LATITUDE = 40°19'38.58" (40.327383)
LONGITUDE = 107°30'57.81" (107.516058)	LONGITUDE = 107°31'00.11" (107.516697)	LONGITUDE = 107°31'03.41" (107.517614)
STATE PLANE NAD 83 (CO. NORTH)	STATE PLANE NAD 83 (CO. NORTH)	STATE PLANE NAD 83 (CO. NORTH)
N: 1366268.93 E: 2437730.50	N: 1367220.21 E: 2437574.20	N: 1368500.08 E: 2437348.07
STATE PLANE NAD 27 (CO. NORTH)	STATE PLANE NAD 27 (CO. NORTH)	STATE PLANE NAD 27 (CO. NORTH)
N: 366267.89 E: 1437888.13	N: 367219.17 E: 1437731.83	N: 368499.05 E: 1437505.70

CERTIFICATE

THIS IS TO CERTIFY THAT THE ABOVE PLAT WAS PREPARED FROM FIELD NOTES OF ACTUAL SURVEYS MADE BY ME OR UNDER MY SUPERVISION AND THAT THE SAME ARE TRUE AND CORRECT TO THE BEST OF MY KNOWLEDGE AND BELIEF.

REGISTERED LAND SURVEYOR  
REGISTRATION NO. 38130  
STATE OF COLORADO

BASIS OF BEARINGS

BASIS OF BEARINGS IS A G.P.S. OBSERVATION

BASIS OF ELEVATION

SPOT ELEVATION AT THE NORTHEAST CORNER OF SECTION 31, T5N, R90W, 6th P.M. TAKEN FROM THE HAMILTON QUADRANGLE, COLORADO, MOFFAT COUNTY, 7.5 MINUTE QUAD (TOPOGRAPHIC MAP) PUBLISHED BY THE UNITED STATES DEPARTMENT OF THE INTERIOR, GEOLOGICAL SURVEY. SAID ELEVATION IS MARKED AS BEING 6664 FEET.

GRMR OIL & GAS

STOVER FEDERAL #9-12 1D  
NW 1/4 SW 1/4, SECTION 9, T4N, R90W, 6th P.M.  
MOFFAT COUNTY, COLORADO

SURVEYED BY: MARTIN PIERCE, J.L.	DATE: 04-06-15
DRAWN BY: T.B.	DATE DRAWN: 04-07-15
SCALE: 1" = 1000'	REVISED: 09-04-15 J.M.C.

WELL LOCATION PLAT



UELS, LLC  
Corporate Office \* 85 South 200 East  
Vernal, UT 84078 \* (435) 789-1017

