

September 30, 2015



410 17th Street, Suite 1500
Denver, CO 80202
(720) 440-6100 phone
(720) 279-2331 fax

Bonanzacrk.com

Colorado Oil and Gas Conservation Commission
The Chancery Building
1120 Lincoln Street, Suite 801
Denver, CO 80203

Attn: Matthew Lepore, Director

Re: Notice of 318A.a.(4).D Well Proposal
State Pronghorn W-32-31MRLNB
SHL: NENE 1306' FNL & 753' FEL, Section 32, Township 5N, Range 61W
Top of Production: SENE 2649' FSL & 631' FEL, Section 32-T5N-R61W
Bottom of Production: NESE 2650' FSL & 860' FEL, Section 31-T5N-R61W, Weld
County, Colorado

Director Lepore:

Bonanza Creek Energy Operating Company, LLC. (Bonanza) intends to permit, drill and operate the referenced Niobrara Horizontal Well. As defined by Colorado Oil and Gas Conservation Commission (COGCC) Rule 318A.a.(4)D., Bonanza proposes the following wellbore spacing unit:

S2/N2 Section 32-T5N-R61W 6th PM, Weld County, CO – containing 160 Acres more or less
N2/S2 Section 32-T5N-R61W 6th PM, Weld County, CO – containing 160 Acres more or less
SE/NE4 Section 31-T5N-R61W 6th PM, Weld County, CO – containing 40 Acres more or less
NE/SE4 Section 31-T5N-R61W 6th PM, Weld County, CO – containing 40 Acres more or less

Bonanza has notified the other owners in the unit and no objections were received. Copies of the notifications are maintained in Bonanza's files.

Bonanza respectfully requests that you review the enclosed wellbore spacing unit documentation and approve the referenced Application for Permit to Drill.

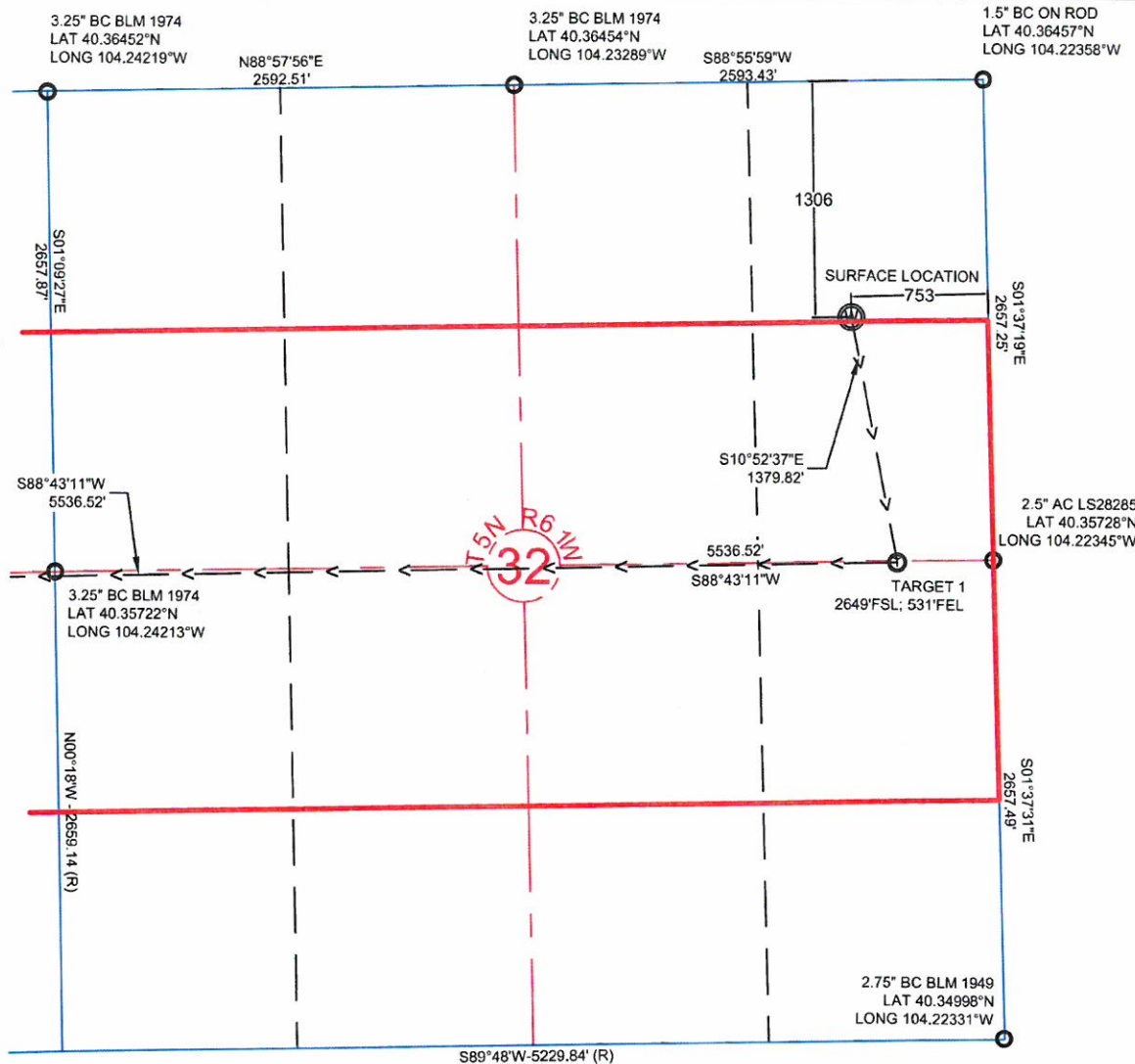
Sincerely,


Julie L. Vigil

Sr. Regulatory Specialist

BONANZA CREEK ENERGY OPERATING COMPANY, LLC.

NOTE: UNDER COLORADO LAW, YOU MUST COMMENCE ANY LEGAL ACTION BASED ON ANY DEFECT IN THIS CERTIFICATE WITHIN THREE YEARS AFTER DEFECT IS DISCOVERED. IN NO EVENT MAY ANY ACTION BASED UPON ANY DEFECT IN THIS SURVEY BE COMMENCED MORE THAN TEN YEARS AFTER DATE OF THIS CERTIFICATE SHOWN HEREON. (13-60105 C.R.S.)



NOTES:

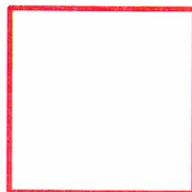
- ALL BEARINGS ARE GRID BASED UPON THE COLORADO STATE PLANE COORDINATE SYSTEM, NORTH ZONE, NAD83(2011) DERIVED FROM POST-PROCESSED STATIC GPS OBSERVATIONS.
- DISTANCES ARE ON GRID
- VERTICAL DATUM IS NAVD88 BASED UPON GPS OBSERVATIONS
- PDOP VALUE EQUALS 1.3.
- GPS OPERATOR: MIKE JOHNSON.
- UNDISTURBED GROUND ELEVATION AT WELLHEAD = 4565'
- ALL SECTION LENGTHS ARE MEASURED DISTANCES UNLESS NOTED BY (R), RECORD BEARING AND DISTANCE.
- NEAREST CULTURAL DISTANCES

CERTIFICATE OF SURVEYOR:

I, DAVID A. FEHRINGER OF LANDER, WYOMING HEREBY CERTIFY THAT THIS WELL LOCATION CERTIFICATE WAS PREPARED FROM NOTES TAKEN DURING AN ACTUAL SURVEY ON AUGUST 26, 2015; AND THAT IT CORRECTLY SHOWS THE DRILLING LOCATION OF BONANZA CREEK ENERGY, INC., STATE PRONGHORN W-32-31MRLNB AS STAKED DURING SAID SURVEY. THIS MAP DOES NOT REPRESENT A BOUNDARY SURVEY OR AN IMPROVEMENT LOCATION PLAT AND SHOULD NOT BE USED FOR THE ESTABLISHMENT OF



**BONANZA
CREEK**



Wellbore Spacing Unit Outline

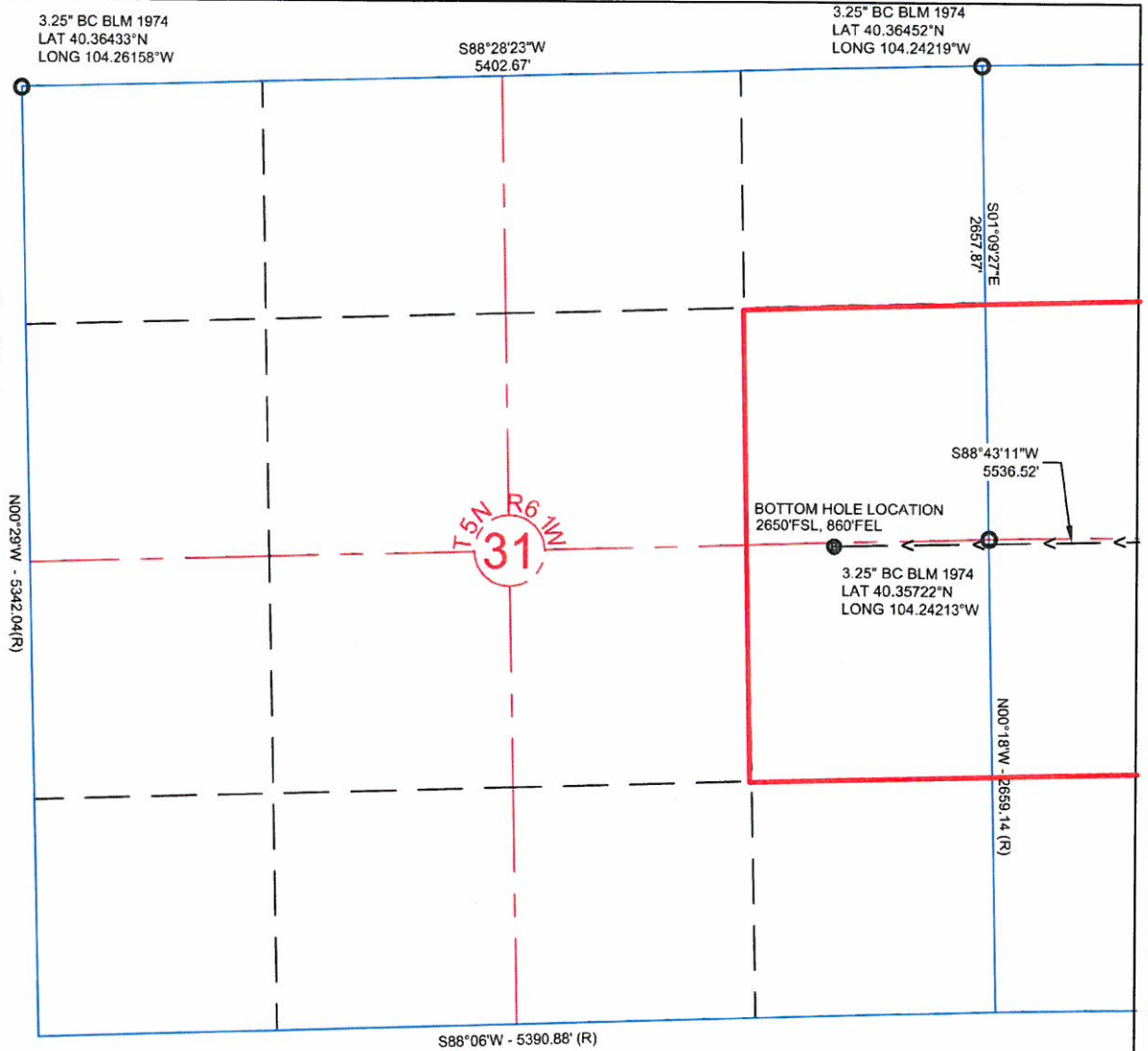


Wellbore Spacing Unit Map

02 September 2015 ksc

State Pronghorn W-32-31MRLNB p1/2
S2/N2 & N2/S2 Sec 32-T5N-R61W 6th PM
SE/NE4 & NE/SE4 Sec 31-T5N-R61W 6th PM
Weld County, Colorado

NOTE: UNDER COLORADO LAW, YOU MUST COMMENCE ANY LEGAL ACTION BASED ON ANY DEFECT IN THIS CERTIFICATE WITHIN THREE YEARS AFTER DEFECT IS DISCOVERED. IN NO EVENT MAY ANY ACTION BASED UPON ANY DEFECT IN THIS SURVEY BE COMMENCED MORE THAN TEN YEARS AFTER DATE OF THIS CERTIFICATE SHOWN HEREON. (13-80105 C.R.S.)



NOTES:

- ALL BEARINGS ARE GRID BASED UPON THE COLORADO STATE PLANE COORDINATE SYSTEM, NORTH ZONE, NAD83(2011) DERIVED FROM POST-PROCESSED STATIC GPS OBSERVATIONS.
- DISTANCES ARE ON GRID
- VERTICAL DATUM IS NAVD88 BASED UPON GPS OBSERVATIONS
- PDOP VALUE EQUALS 1.3.
- GPS OPERATOR: MIKE JOHNSON.
- UNDISTURBED GROUND ELEVATION AT WELLHEAD = 4565'
- ALL SECTION LENGTHS ARE MEASURED DISTANCES UNLESS NOTED BY (R), RECORD BEARING AND DISTANCE.
- NEAREST CULTURAL DISTANCES

CERTIFICATE OF SURVEYOR:

I, DAVID A. FEHRINGER OF LANDER, WYOMING HEREBY CERTIFY THAT THIS WELL LOCATION CERTIFICATE WAS PREPARED FROM NOTES TAKEN DURING AN ACTUAL SURVEY ON AUGUST 26, 2015; AND THAT IT CORRECTLY SHOWS THE DRILLING LOCATION OF BONANZA CREEK ENERGY, INC., STATE PRONGHORN W-32-31MRLNB AS STAKED DURING SAID SURVEY. THIS MAP DOES NOT REPRESENT A BOUNDARY SURVEY OR AN IMPROVEMENT LOCATION PLAT AND SHOULD NOT BE USED FOR THE ESTABLISHMENT OF



**BONANZA
CREEK**



Wellbore Spacing Unit Outline



Wellbore Spacing Unit Map

02 September 2015 ksc

State Pronghorn W-32-31MRLNB p2/2
S2/N2 & N2/S2 Sec 32-T5N-R61W 6th PM
SE/NE4 & NE/SE4 Sec 31-T5N-R61W 6th PM
Weld County, Colorado