

BONANZA CREEK ENERGY INC.

WELD COUNTY, COLORADO (NAD 83)

NE NE SEC. 32 T5N R61W 6th P.M.

STATE PRONGHORN W-32-31MRLNB

ORIGINAL WELLBORE

05 September, 2015

Plan: PROPOSAL #1

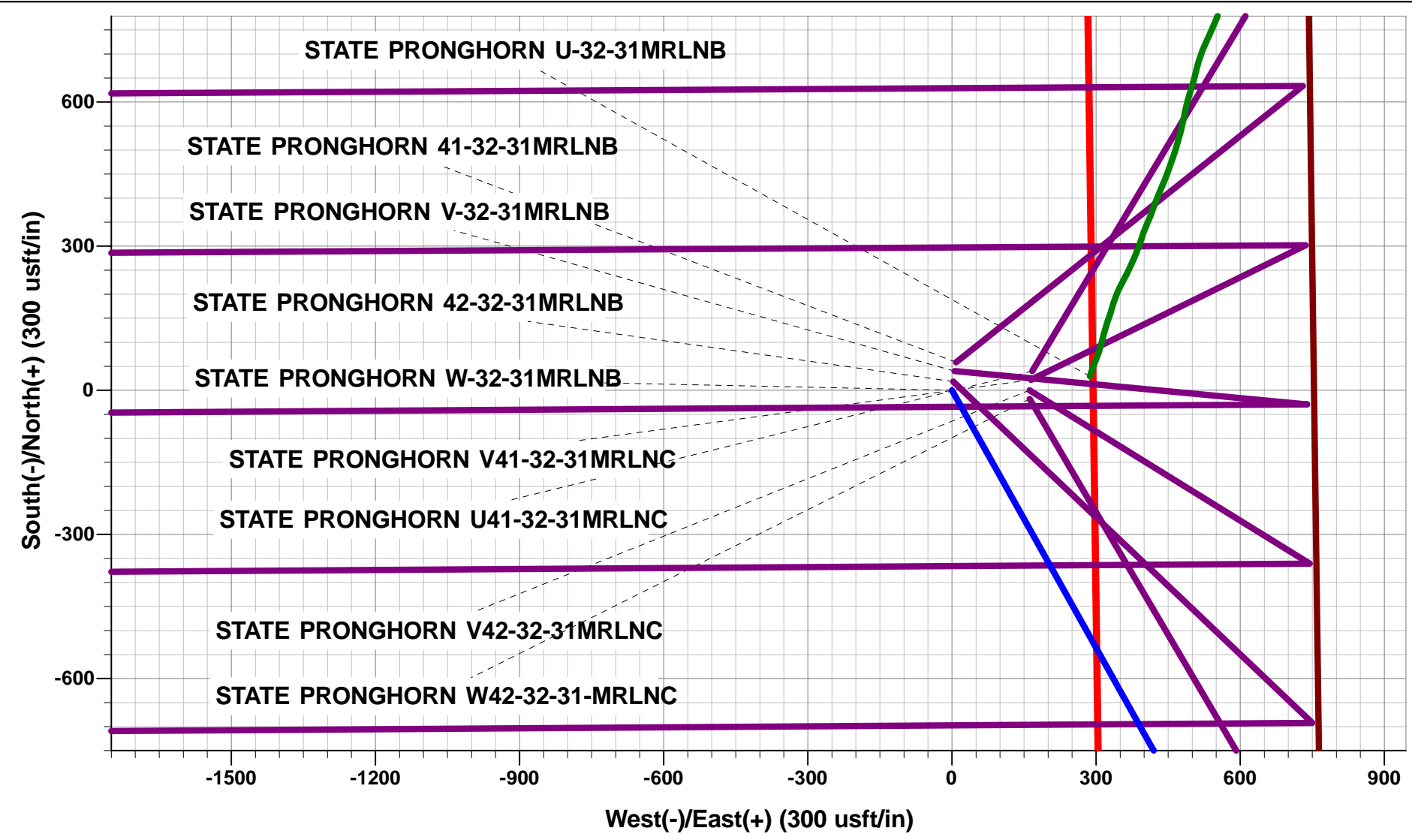




Project: WELD COUNTY, COLORADO (NAD 83)
Site: NE NE SEC. 32 T5N R61W 6th P.M.
Well: STATE PRONGHORN W-32-31MRLNB
Wellbore: ORIGINAL WELLBORE
Design: PROPOSAL #1

ANNOTATIONS								
TVD	MD	Inc	Azi	+N/-S	+E/-W	VSec	Dep	Annotation
900.0	900.0	0.00	0.00	0.0	0.0	0.0	0.0	START NUDGE (2°/100ft BUR)
2122.9	2163.4	25.27	150.76	-239.2	133.9	-68.2	274.1	EOB TO 25.27° INC
4250.8	4516.5	25.27	150.76	-1115.6	624.6	-318.2	1278.6	END OF TANGENT
5473.7	5780.0	0.00	0.00	-1354.8	758.5	-386.5	1552.7	EOD TO VERTICAL
5503.7	5810.0	0.00	0.00	-1354.8	758.5	-386.5	1552.7	KOP (12°/100ft BUR)
5964.9	6435.0	75.00	269.55	-1357.6	404.6	-43.7	1906.6	START OF TANGENT
5990.8	6535.0	75.00	269.55	-1358.3	308.0	49.9	2003.2	END OF TANGENT
6007.0	6660.0	90.00	269.55	-1359.3	184.5	169.6	2126.7	7" ICP *NEW* - STATE PRONGHORN W-32-31MRLNB
6007.0	12139.9	90.00	269.56	-1402.0	-5295.3	5477.7	7606.6	BHL - STATE PRONGHORN W-32-31MRLNB

WELLBORE TARGET DETAILS (LAT/LONG)					
Name	TVD	+N/-S	+E/-W	Latitude	Longitude
KOP - STATE PRONGHORN W-32-31MRLNB	5503.7	-1354.8	758.5	40.357261	-104.223498
BHL - STATE PRONGHORN W-32-31MRLNB	6007.0	-1402.0	-5295.3	40.357130	-104.245220
7" ICP *NEW* - STATE PRONGHORN W-32-31MRLNB	6007.0	-1359.3	184.5	40.357249	-104.225558

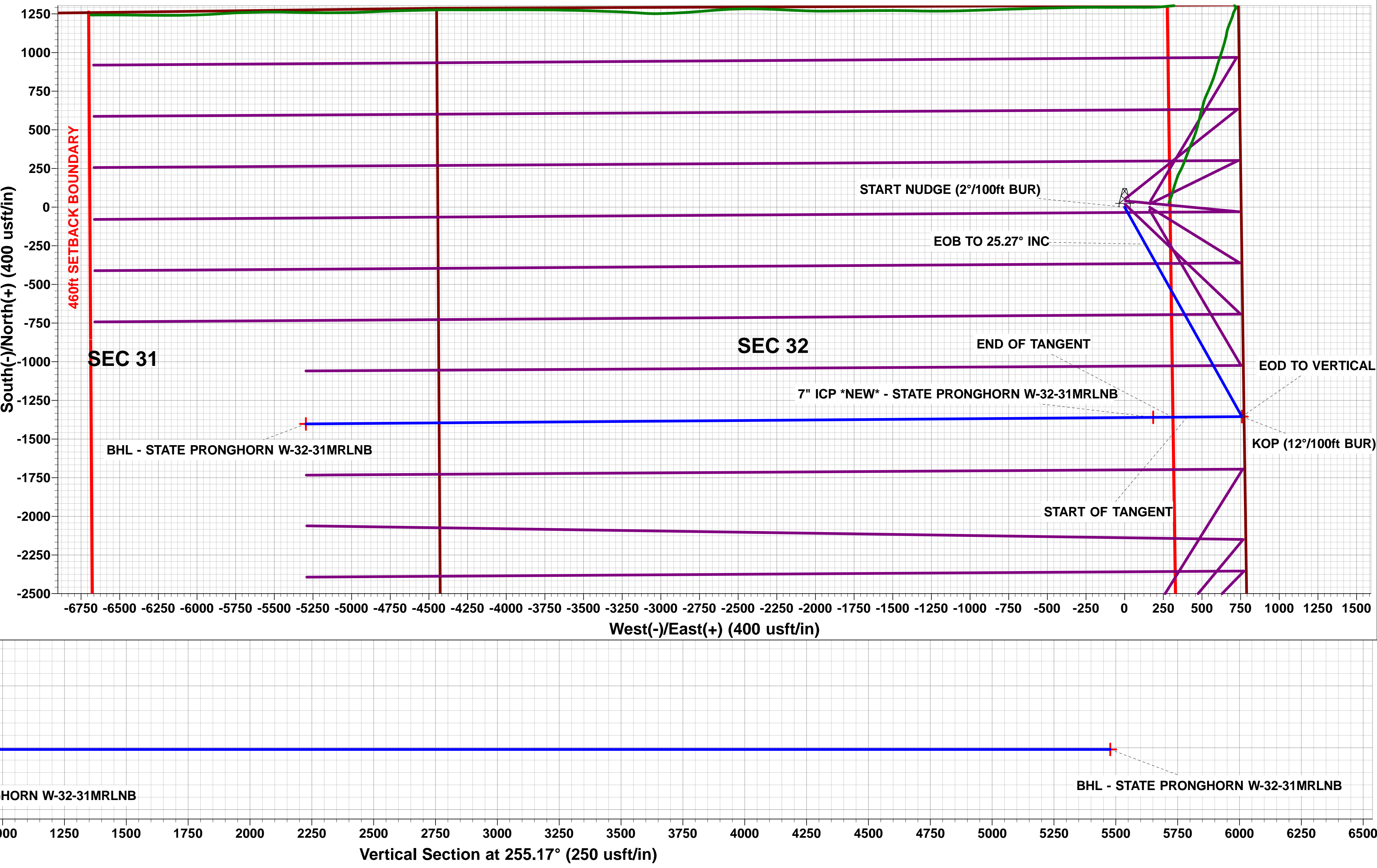
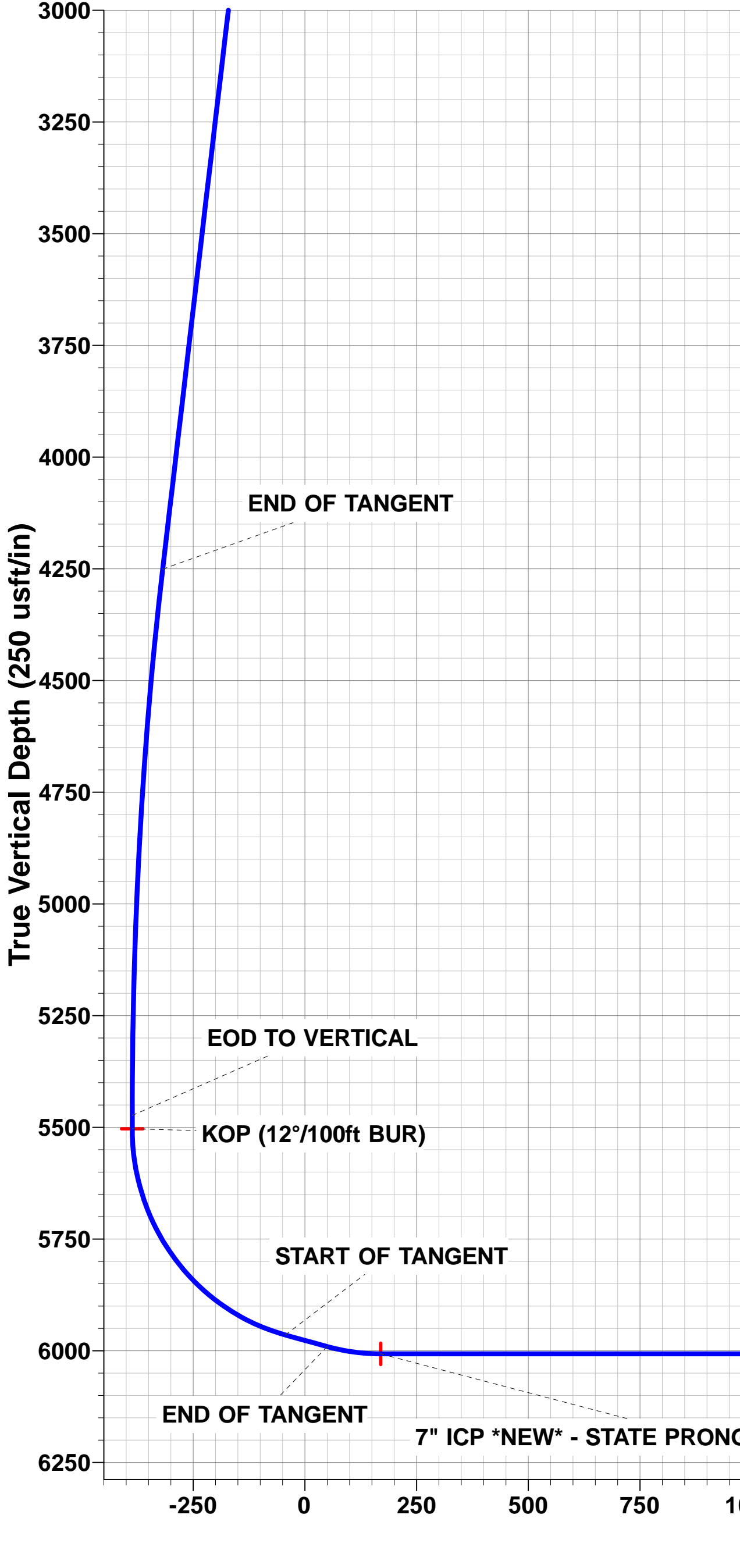
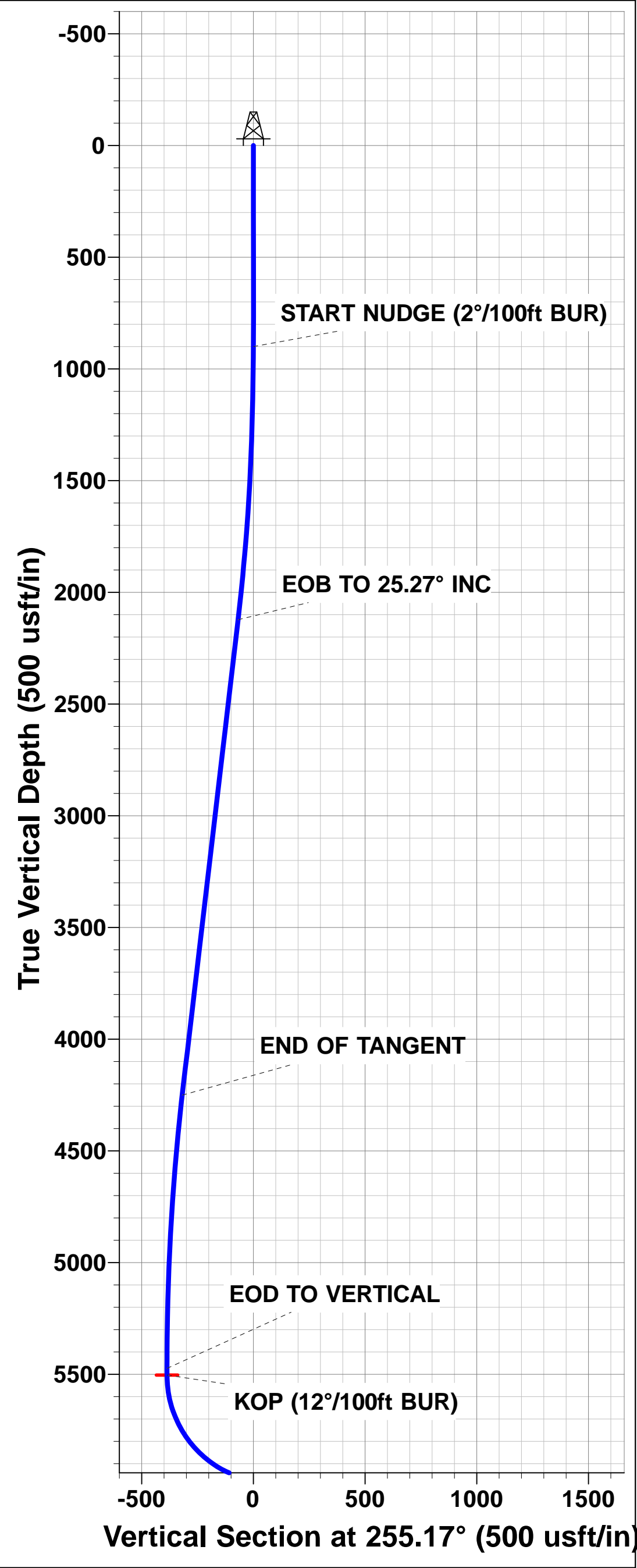


PROPOSED LOCAL COORDINATES:
SHL: 1306ft FNL & 753ft FEL of Sec 32
7" ICP *NEW*: 2649ft FSL & 589ft FEL of Sec 32
BHL: 2650ft FSL & 860ft FEL of Sec 31

T
M

Azimuths to True North
Magnetic North: 8.11°

Magnetic Field
Strength: 52633.8snT
Dip Angle: 66.95°
Date: 04/09/2015
Model: IGRF2015



Database:	EDM 5000.1 Single User Db	Local Co-ordinate Reference:	Well STATE PRONGHORN W-32-31MRLNB
Company:	BONANZA CREEK ENERGY INC.	TVD Reference:	KB-EST @ 4582.0usft (Original Well Elev)
Project:	WELD COUNTY, COLORADO (NAD 83)	MD Reference:	KB-EST @ 4582.0usft (Original Well Elev)
Site:	NE NE SEC. 32 T5N R61W 6th P.M.	North Reference:	True
Well:	STATE PRONGHORN W-32-31MRLNB	Survey Calculation Method:	Minimum Curvature
Wellbore:	ORIGINAL WELLBORE		
Design:	PROPOSAL #1		

Project	WELD COUNTY, COLORADO (NAD 83)		
Map System:	US State Plane 1983	System Datum:	Mean Sea Level
Geo Datum:	North American Datum 1983		
Map Zone:	Colorado Northern Zone		Using geodetic scale factor

Site	NE NE SEC. 32 T5N R61W 6th P.M.		
Site Position:		Northing:	1,376,924.91 usft
From:	Lat/Long	Easting:	3,355,259.04 usft
Position Uncertainty:	0.0 usft	Slot Radius:	1.10000ft
		Latitude:	40.361050
		Longitude:	-104.225120
		Grid Convergence:	0.82 °

Well	STATE PRONGHORN W-32-31MRLNB					
Well Position	+N/-S	-25.5 usft	Northing:	1,376,895.00 usfi	Latitude:	40.360980
	+E/-W	-306.6 usft	Easting:	3,354,952.90 usfi	Longitude:	-104.226220
Position Uncertainty		0.0 usft	Wellhead Elevation:	usfi	Ground Level:	4,565.0 usft

Wellbore	ORIGINAL WELLBORE				
Magnetics	Model Name	Sample Date	Declination (°)	Dip Angle (°)	Field Strength (nT)
	IGRF2015	04/09/2015	8.11	66.95	52,634

Design	PROPOSAL #1			
Audit Notes:				
Version:	Phase:	PROTOTYPE	Tie On Depth:	0.0
Vertical Section:	Depth From (TVD) (usft)	+N/-S (usft)	+E/-W (usft)	Direction (°)
	0.0	0.0	0.0	255.17

Plan Sections											
MD (usft)	Inc (°)	Azi (°)	Vertical Depth	SS (usft)	+N/-S (usft)	+E/-W (usft)	Dogleg Rate (°/100usf)	Build Rate (°/100usf)	Turn Rate (°/100usf)	TFO (°)	Target
0.0	0.00	0.00	0.0	-4,582.0	0.0	0.0	0.00	0.00	0.00	0.00	
900.0	0.00	0.00	900.0	-3,682.0	0.0	0.0	0.00	0.00	0.00	0.00	
2,163.4	25.27	150.76	2,122.9	-2,459.1	-239.2	133.9	2.00	2.00	0.00	150.76	
4,516.5	25.27	150.76	4,250.8	-331.2	-1,115.6	624.6	0.00	0.00	0.00	0.00	
5,780.0	0.00	0.00	5,473.7	891.7	-1,354.8	758.5	2.00	-2.00	0.00	180.00	
5,810.0	0.00	0.00	5,503.7	921.7	-1,354.8	758.5	0.00	0.00	0.00	0.00	KOP - STATE PRO
6,435.0	75.00	269.55	5,964.9	1,382.9	-1,357.6	404.6	12.00	12.00	0.00	269.55	
6,535.0	75.00	269.55	5,990.8	1,408.8	-1,358.3	308.0	0.00	0.00	0.00	0.00	
6,660.0	90.00	269.55	6,007.0	1,425.0	-1,359.3	184.5	12.00	12.00	0.00	0.00	
12,139.9	90.00	269.56	6,007.0	1,425.0	-1,402.0	-5,295.3	0.00	0.00	0.00	82.06	BHL - STATE PROI

Database:	EDM 5000.1 Single User Db	Local Co-ordinate Reference:	Well STATE PRONGHORN W-32-31MRLNB
Company:	BONANZA CREEK ENERGY INC.	TVD Reference:	KB-EST @ 4582.0usft (Original Well Elev)
Project:	WELD COUNTY, COLORADO (NAD 83)	MD Reference:	KB-EST @ 4582.0usft (Original Well Elev)
Site:	NE NE SEC. 32 T5N R61W 6th P.M.	North Reference:	True
Well:	STATE PRONGHORN W-32-31MRLNB	Survey Calculation Method:	Minimum Curvature
Wellbore:	ORIGINAL WELLBORE		
Design:	PROPOSAL #1		

Planned Survey

MD (usft)	Inc (°)	Azi (°)	TVD (usft)	SS (usft)	+N/-S (usft)	+E/-W (usft)	Vertical Section (usft)	Dogleg Rate (°/100usft)	Build Rate (°/100usft)	Turn Rate (°/100usft)
0.0	0.00	0.00	0.0	4,582.00	0.0	0.0	0.0	0.00	0.00	0.00
100.0	0.00	0.00	100.0	4,482.00	0.0	0.0	0.0	0.00	0.00	0.00
200.0	0.00	0.00	200.0	4,382.00	0.0	0.0	0.0	0.00	0.00	0.00
300.0	0.00	0.00	300.0	4,282.00	0.0	0.0	0.0	0.00	0.00	0.00
400.0	0.00	0.00	400.0	4,182.00	0.0	0.0	0.0	0.00	0.00	0.00
500.0	0.00	0.00	500.0	4,082.00	0.0	0.0	0.0	0.00	0.00	0.00
600.0	0.00	0.00	600.0	3,982.00	0.0	0.0	0.0	0.00	0.00	0.00
700.0	0.00	0.00	700.0	3,882.00	0.0	0.0	0.0	0.00	0.00	0.00
800.0	0.00	0.00	800.0	3,782.00	0.0	0.0	0.0	0.00	0.00	0.00
START NUDGE (2°/100ft BUR)										
900.0	0.00	0.00	900.0	3,682.00	0.0	0.0	0.0	0.00	0.00	0.00
1,000.0	2.00	150.76	1,000.0	3,582.02	-1.5	0.9	-0.4	2.00	2.00	0.00
1,100.0	4.00	150.76	1,099.8	3,482.16	-6.1	3.4	-1.7	2.00	2.00	0.00
1,200.0	6.00	150.76	1,199.5	3,382.55	-13.7	7.7	-3.9	2.00	2.00	0.00
1,300.0	8.00	150.76	1,298.7	3,283.30	-24.3	13.6	-6.9	2.00	2.00	0.00
1,400.0	10.00	150.76	1,397.5	3,184.53	-38.0	21.3	-10.8	2.00	2.00	0.00
1,500.0	12.00	150.76	1,495.6	3,086.38	-54.6	30.6	-15.6	2.00	2.00	0.00
1,600.0	14.00	150.76	1,593.1	2,988.94	-74.3	41.6	-21.2	2.00	2.00	0.00
1,700.0	16.00	150.76	1,689.6	2,892.36	-96.8	54.2	-27.6	2.00	2.00	0.00
1,800.0	18.00	150.76	1,785.3	2,796.73	-122.3	68.5	-34.9	2.00	2.00	0.00
1,900.0	20.00	150.76	1,879.8	2,702.18	-150.7	84.4	-43.0	2.00	2.00	0.00
2,000.0	22.00	150.76	1,973.2	2,608.83	-182.0	101.9	-51.9	2.00	2.00	0.00
2,100.0	24.00	150.76	2,065.2	2,516.79	-216.1	121.0	-61.6	2.00	2.00	0.00
EOB TO 25.27° INC										
2,163.4	25.27	150.76	2,122.9	2,459.13	-239.2	133.9	-68.2	2.00	2.00	0.00
2,200.0	25.27	150.76	2,155.9	2,426.06	-252.8	141.5	-72.1	0.00	0.00	0.00
2,300.0	25.27	150.76	2,246.4	2,335.63	-290.0	162.4	-82.7	0.00	0.00	0.00
2,400.0	25.27	150.76	2,336.8	2,245.20	-327.3	183.2	-93.4	0.00	0.00	0.00
2,500.0	25.27	150.76	2,427.2	2,154.76	-364.5	204.1	-104.0	0.00	0.00	0.00
2,600.0	25.27	150.76	2,517.7	2,064.33	-401.8	224.9	-114.6	0.00	0.00	0.00
2,700.0	25.27	150.76	2,608.1	1,973.90	-439.0	245.8	-125.2	0.00	0.00	0.00
2,800.0	25.27	150.76	2,698.5	1,883.47	-476.3	266.6	-135.9	0.00	0.00	0.00
2,900.0	25.27	150.76	2,789.0	1,793.04	-513.5	287.5	-146.5	0.00	0.00	0.00
3,000.0	25.27	150.76	2,879.4	1,702.60	-550.8	308.4	-157.1	0.00	0.00	0.00
3,100.0	25.27	150.76	2,969.8	1,612.17	-588.0	329.2	-167.7	0.00	0.00	0.00
3,200.0	25.27	150.76	3,060.3	1,521.74	-625.3	350.1	-178.4	0.00	0.00	0.00
3,300.0	25.27	150.76	3,150.7	1,431.31	-662.5	370.9	-189.0	0.00	0.00	0.00
3,400.0	25.27	150.76	3,241.1	1,340.88	-699.8	391.8	-199.6	0.00	0.00	0.00
3,500.0	25.27	150.76	3,331.6	1,250.45	-737.0	412.6	-210.2	0.00	0.00	0.00
3,600.0	25.27	150.76	3,422.0	1,160.01	-774.2	433.5	-220.9	0.00	0.00	0.00
3,700.0	25.27	150.76	3,512.4	1,069.58	-811.5	454.3	-231.5	0.00	0.00	0.00
3,800.0	25.27	150.76	3,602.8	979.15	-848.7	475.2	-242.1	0.00	0.00	0.00
3,900.0	25.27	150.76	3,693.3	888.72	-886.0	496.0	-252.7	0.00	0.00	0.00
4,000.0	25.27	150.76	3,783.7	798.29	-923.2	516.9	-263.4	0.00	0.00	0.00
4,100.0	25.27	150.76	3,874.1	707.86	-960.5	537.7	-274.0	0.00	0.00	0.00
4,200.0	25.27	150.76	3,964.6	617.42	-997.7	558.6	-284.6	0.00	0.00	0.00
4,300.0	25.27	150.76	4,055.0	526.99	-1,035.0	579.4	-295.2	0.00	0.00	0.00
4,400.0	25.27	150.76	4,145.4	436.56	-1,072.2	600.3	-305.9	0.00	0.00	0.00
4,500.0	25.27	150.76	4,235.9	346.13	-1,109.5	621.1	-316.5	0.00	0.00	0.00
END OF TANGENT										
4,516.5	25.27	150.76	4,250.8	331.17	-1,115.6	624.6	-318.2	0.00	0.00	0.00
4,600.0	23.60	150.76	4,326.8	255.19	-1,145.7	641.5	-326.8	2.00	-2.00	0.00
4,700.0	21.60	150.76	4,419.1	162.87	-1,179.3	660.2	-336.4	2.00	-2.00	0.00

Database:	EDM 5000.1 Single User Db	Local Co-ordinate Reference:	Well STATE PRONGHORN W-32-31MRLNB
Company:	BONANZA CREEK ENERGY INC.	TVD Reference:	KB-EST @ 4582.0usft (Original Well Elev)
Project:	WELD COUNTY, COLORADO (NAD 83)	MD Reference:	KB-EST @ 4582.0usft (Original Well Elev)
Site:	NE NE SEC. 32 T5N R61W 6th P.M.	North Reference:	True
Well:	STATE PRONGHORN W-32-31MRLNB	Survey Calculation Method:	Minimum Curvature
Wellbore:	ORIGINAL WELLBORE		
Design:	PROPOSAL #1		

Planned Survey

MD (usft)	Inc (°)	Azi (°)	TVD (usft)	SS (usft)	+N/-S (usft)	+E/-W (usft)	Vertical Section (usft)	Dogleg Rate (°/100usft)	Build Rate (°/100usft)	Turn Rate (°/100usft)
4,800.0	19.60	150.76	4,512.7	69.27	-1,210.0	677.4	-345.2	2.00	-2.00	0.00
4,900.0	17.60	150.76	4,607.5	-25.50	-1,237.8	693.0	-353.1	2.00	-2.00	0.00
5,000.0	15.60	150.76	4,703.3	-121.33	-1,262.7	707.0	-360.2	2.00	-2.00	0.00
5,100.0	13.60	150.76	4,800.1	-218.10	-1,284.7	719.3	-366.5	2.00	-2.00	0.00
5,200.0	11.60	150.76	4,897.7	-315.68	-1,303.7	729.9	-371.9	2.00	-2.00	0.00
5,300.0	9.60	150.76	4,996.0	-413.97	-1,319.8	738.9	-376.5	2.00	-2.00	0.00
5,400.0	7.60	150.76	5,094.8	-512.84	-1,332.8	746.2	-380.2	2.00	-2.00	0.00
5,500.0	5.60	150.76	5,194.2	-612.17	-1,342.9	751.8	-383.1	2.00	-2.00	0.00
5,600.0	3.60	150.76	5,293.8	-711.85	-1,349.9	755.7	-385.1	2.00	-2.00	0.00
5,700.0	1.60	150.76	5,393.7	-811.74	-1,353.8	758.0	-386.2	2.00	-2.00	0.00
EOD TO VERTICAL										
5,780.0	0.00	0.00	5,473.7	-891.70	-1,354.8	758.5	-386.5	2.00	-2.00	0.00
5,800.0	0.00	0.00	5,493.7	-911.73	-1,354.8	758.5	-386.5	0.00	0.00	0.00
KOP (12°/100ft BUR)										
5,810.0	0.00	0.00	5,503.7	-921.70	-1,354.8	758.5	-386.5	0.00	0.00	0.00
5,900.0	10.80	269.55	5,593.2	-1,011.20	-1,354.9	750.0	-378.3	12.00	12.00	0.00
6,000.0	22.80	269.55	5,688.8	-1,106.75	-1,355.1	721.2	-350.3	12.00	12.00	0.00
6,100.0	34.80	269.55	5,776.2	-1,194.22	-1,355.5	673.1	-303.7	12.00	12.00	0.00
6,200.0	46.80	269.55	5,851.8	-1,269.78	-1,356.0	607.9	-240.6	12.00	12.00	0.00
6,300.0	58.80	269.55	5,912.1	-1,330.12	-1,356.6	528.4	-163.5	12.00	12.00	0.00
6,400.0	70.80	269.55	5,954.6	-1,372.62	-1,357.3	438.0	-76.0	12.00	12.00	0.00
START OF TANGENT										
6,435.0	75.00	269.55	5,964.9	-1,382.90	-1,357.6	404.6	-43.7	12.00	12.00	0.00
6,500.0	75.00	269.55	5,981.7	-1,399.73	-1,358.1	341.8	17.2	0.00	0.00	0.00
END OF TANGENT										
6,535.0	75.00	269.55	5,990.8	-1,408.78	-1,358.3	308.0	49.9	0.00	0.00	0.00
6,600.0	82.80	269.55	6,003.3	-1,421.29	-1,358.8	244.3	111.7	12.00	12.00	0.00
7" ICP *NEW* - STATE PRONGHORN W-32-31MRLNB										
6,660.0	90.00	269.55	6,007.0	-1,425.05	-1,359.3	184.5	169.6	12.00	12.00	0.00
6,700.0	90.00	269.55	6,007.0	-1,425.05	-1,359.6	144.4	208.4	0.00	0.00	0.00
6,800.0	90.00	269.55	6,007.0	-1,425.05	-1,360.4	44.4	305.2	0.00	0.00	0.00
6,900.0	90.00	269.55	6,007.0	-1,425.05	-1,361.2	-55.6	402.1	0.00	0.00	0.00
7,000.0	90.00	269.55	6,007.0	-1,425.05	-1,362.0	-155.6	499.0	0.00	0.00	0.00
7,100.0	90.00	269.55	6,007.0	-1,425.05	-1,362.8	-255.6	595.8	0.00	0.00	0.00
7,200.0	90.00	269.55	6,007.0	-1,425.05	-1,363.5	-355.6	692.7	0.00	0.00	0.00
7,300.0	90.00	269.55	6,007.0	-1,425.05	-1,364.3	-455.5	789.6	0.00	0.00	0.00
7,400.0	90.00	269.55	6,007.0	-1,425.05	-1,365.1	-555.5	886.4	0.00	0.00	0.00
7,500.0	90.00	269.55	6,007.0	-1,425.05	-1,365.9	-655.5	983.3	0.00	0.00	0.00
7,600.0	90.00	269.55	6,007.0	-1,425.05	-1,366.7	-755.5	1,080.2	0.00	0.00	0.00
7,700.0	90.00	269.55	6,007.0	-1,425.05	-1,367.5	-855.5	1,177.0	0.00	0.00	0.00
7,800.0	90.00	269.55	6,007.0	-1,425.04	-1,368.2	-955.5	1,273.9	0.00	0.00	0.00
7,900.0	90.00	269.55	6,007.0	-1,425.04	-1,369.0	-1,055.5	1,370.8	0.00	0.00	0.00
8,000.0	90.00	269.55	6,007.0	-1,425.04	-1,369.8	-1,155.5	1,467.6	0.00	0.00	0.00
8,100.0	90.00	269.55	6,007.0	-1,425.04	-1,370.6	-1,255.5	1,564.5	0.00	0.00	0.00
8,200.0	90.00	269.55	6,007.0	-1,425.04	-1,371.4	-1,355.5	1,661.4	0.00	0.00	0.00
8,300.0	90.00	269.55	6,007.0	-1,425.04	-1,372.2	-1,455.5	1,758.2	0.00	0.00	0.00
8,400.0	90.00	269.55	6,007.0	-1,425.04	-1,372.9	-1,555.5	1,855.1	0.00	0.00	0.00
8,500.0	90.00	269.55	6,007.0	-1,425.04	-1,373.7	-1,655.5	1,952.0	0.00	0.00	0.00
8,600.0	90.00	269.55	6,007.0	-1,425.04	-1,374.5	-1,755.5	2,048.8	0.00	0.00	0.00
8,700.0	90.00	269.55	6,007.0	-1,425.04	-1,375.3	-1,855.5	2,145.7	0.00	0.00	0.00
8,800.0	90.00	269.55	6,007.0	-1,425.04	-1,376.1	-1,955.5	2,242.6	0.00	0.00	0.00
8,900.0	90.00	269.55	6,007.0	-1,425.04	-1,376.8	-2,055.5	2,339.4	0.00	0.00	0.00
9,000.0	90.00	269.55	6,007.0	-1,425.04	-1,377.6	-2,155.5	2,436.3	0.00	0.00	0.00
9,100.0	90.00	269.55	6,007.0	-1,425.04	-1,378.4	-2,255.5	2,533.2	0.00	0.00	0.00

Database:	EDM 5000.1 Single User Db	Local Co-ordinate Reference:	Well STATE PRONGHORN W-32-31MRLNB
Company:	BONANZA CREEK ENERGY INC.	TVD Reference:	KB-EST @ 4582.0usft (Original Well Elev)
Project:	WELD COUNTY, COLORADO (NAD 83)	MD Reference:	KB-EST @ 4582.0usft (Original Well Elev)
Site:	NE NE SEC. 32 T5N R61W 6th P.M.	North Reference:	True
Well:	STATE PRONGHORN W-32-31MRLNB	Survey Calculation Method:	Minimum Curvature
Wellbore:	ORIGINAL WELLBORE		
Design:	PROPOSAL #1		

Planned Survey

MD (usft)	Inc (°)	Azi (°)	TVD (usft)	SS (usft)	+N/-S (usft)	+E/-W (usft)	Vertical Section (usft)	Dogleg Rate (°/100usft)	Build Rate (°/100usft)	Turn Rate (°/100usft)
9,200.0	90.00	269.55	6,007.0	-1,425.04	-1,379.2	-2,355.5	2,630.0	0.00	0.00	0.00
9,300.0	90.00	269.55	6,007.0	-1,425.04	-1,380.0	-2,455.5	2,726.9	0.00	0.00	0.00
9,400.0	90.00	269.55	6,007.0	-1,425.04	-1,380.7	-2,555.5	2,823.8	0.00	0.00	0.00
9,500.0	90.00	269.55	6,007.0	-1,425.03	-1,381.5	-2,655.5	2,920.6	0.00	0.00	0.00
9,600.0	90.00	269.55	6,007.0	-1,425.03	-1,382.3	-2,755.5	3,017.5	0.00	0.00	0.00
9,700.0	90.00	269.55	6,007.0	-1,425.03	-1,383.1	-2,855.5	3,114.4	0.00	0.00	0.00
9,800.0	90.00	269.55	6,007.0	-1,425.03	-1,383.9	-2,955.5	3,211.2	0.00	0.00	0.00
9,900.0	90.00	269.55	6,007.0	-1,425.03	-1,384.6	-3,055.5	3,308.1	0.00	0.00	0.00
10,000.0	90.00	269.55	6,007.0	-1,425.03	-1,385.4	-3,155.5	3,405.0	0.00	0.00	0.00
10,100.0	90.00	269.55	6,007.0	-1,425.03	-1,386.2	-3,255.5	3,501.8	0.00	0.00	0.00
10,200.0	90.00	269.55	6,007.0	-1,425.03	-1,387.0	-3,355.5	3,598.7	0.00	0.00	0.00
10,300.0	90.00	269.55	6,007.0	-1,425.03	-1,387.8	-3,455.5	3,695.5	0.00	0.00	0.00
10,400.0	90.00	269.55	6,007.0	-1,425.02	-1,388.5	-3,555.5	3,792.4	0.00	0.00	0.00
10,500.0	90.00	269.55	6,007.0	-1,425.02	-1,389.3	-3,655.5	3,889.3	0.00	0.00	0.00
10,600.0	90.00	269.56	6,007.0	-1,425.02	-1,390.1	-3,755.4	3,986.1	0.00	0.00	0.00
10,700.0	90.00	269.56	6,007.0	-1,425.02	-1,390.9	-3,855.4	4,083.0	0.00	0.00	0.00
10,800.0	90.00	269.56	6,007.0	-1,425.02	-1,391.6	-3,955.4	4,179.9	0.00	0.00	0.00
10,900.0	90.00	269.56	6,007.0	-1,425.02	-1,392.4	-4,055.4	4,276.7	0.00	0.00	0.00
11,000.0	90.00	269.56	6,007.0	-1,425.02	-1,393.2	-4,155.4	4,373.6	0.00	0.00	0.00
11,100.0	90.00	269.56	6,007.0	-1,425.02	-1,394.0	-4,255.4	4,470.5	0.00	0.00	0.00
11,200.0	90.00	269.56	6,007.0	-1,425.01	-1,394.7	-4,355.4	4,567.3	0.00	0.00	0.00
11,300.0	90.00	269.56	6,007.0	-1,425.01	-1,395.5	-4,455.4	4,664.2	0.00	0.00	0.00
11,400.0	90.00	269.56	6,007.0	-1,425.01	-1,396.3	-4,555.4	4,761.1	0.00	0.00	0.00
11,500.0	90.00	269.56	6,007.0	-1,425.01	-1,397.1	-4,655.4	4,857.9	0.00	0.00	0.00
11,600.0	90.00	269.56	6,007.0	-1,425.01	-1,397.8	-4,755.4	4,954.8	0.00	0.00	0.00
11,700.0	90.00	269.56	6,007.0	-1,425.01	-1,398.6	-4,855.4	5,051.7	0.00	0.00	0.00
11,800.0	90.00	269.56	6,007.0	-1,425.01	-1,399.4	-4,955.4	5,148.5	0.00	0.00	0.00
11,900.0	90.00	269.56	6,007.0	-1,425.00	-1,400.2	-5,055.4	5,245.4	0.00	0.00	0.00
12,000.0	90.00	269.56	6,007.0	-1,425.00	-1,400.9	-5,155.4	5,342.2	0.00	0.00	0.00
12,100.0	90.00	269.56	6,007.0	-1,425.00	-1,401.7	-5,255.4	5,439.1	0.00	0.00	0.00
BHL - STATE PRONGHORN W-32-31MRLNB										
12,139.9	90.00	269.56	6,007.0	-1,425.00	-1,402.0	-5,295.3	5,477.7	0.00	0.00	0.00

Plan Annotations

MD (usft)	TVD (usft)	Local Coordinates		Comment
		+N/-S (usft)	+E/-W (usft)	
900.0	900.0	0.0	0.0	START NUDGE (2°/100ft BUR)
2,163.4	2,122.9	-239.2	133.9	EOB TO 25.27° INC
4,516.5	4,250.8	-1,115.6	624.6	END OF TANGENT
5,780.0	5,473.7	-1,354.8	758.5	EOD TO VERTICAL
5,810.0	5,503.7	-1,354.8	758.5	KOP (12°/100ft BUR)
6,435.0	5,964.9	-1,357.6	404.6	START OF TANGENT
6,535.0	5,990.8	-1,358.3	308.0	END OF TANGENT
6,660.0	6,007.0	-1,359.3	184.5	7" ICP *NEW* - STATE PRONGHORN W-32-31MRLNB
12,139.9	6,007.0	-1,402.0	-5,295.3	BHL - STATE PRONGHORN W-32-31MRLNB