

BONANZA CREEK ENERGY INC.

WELD COUNTY, COLORADO (NAD 83)

NE NE SEC. 32 T5N R61W 6th P.M.

STATE PRONGHORN 41-32-31MRLNB

ORIGINAL WELLBORE

04 September, 2015

Plan: PROPOSAL #1

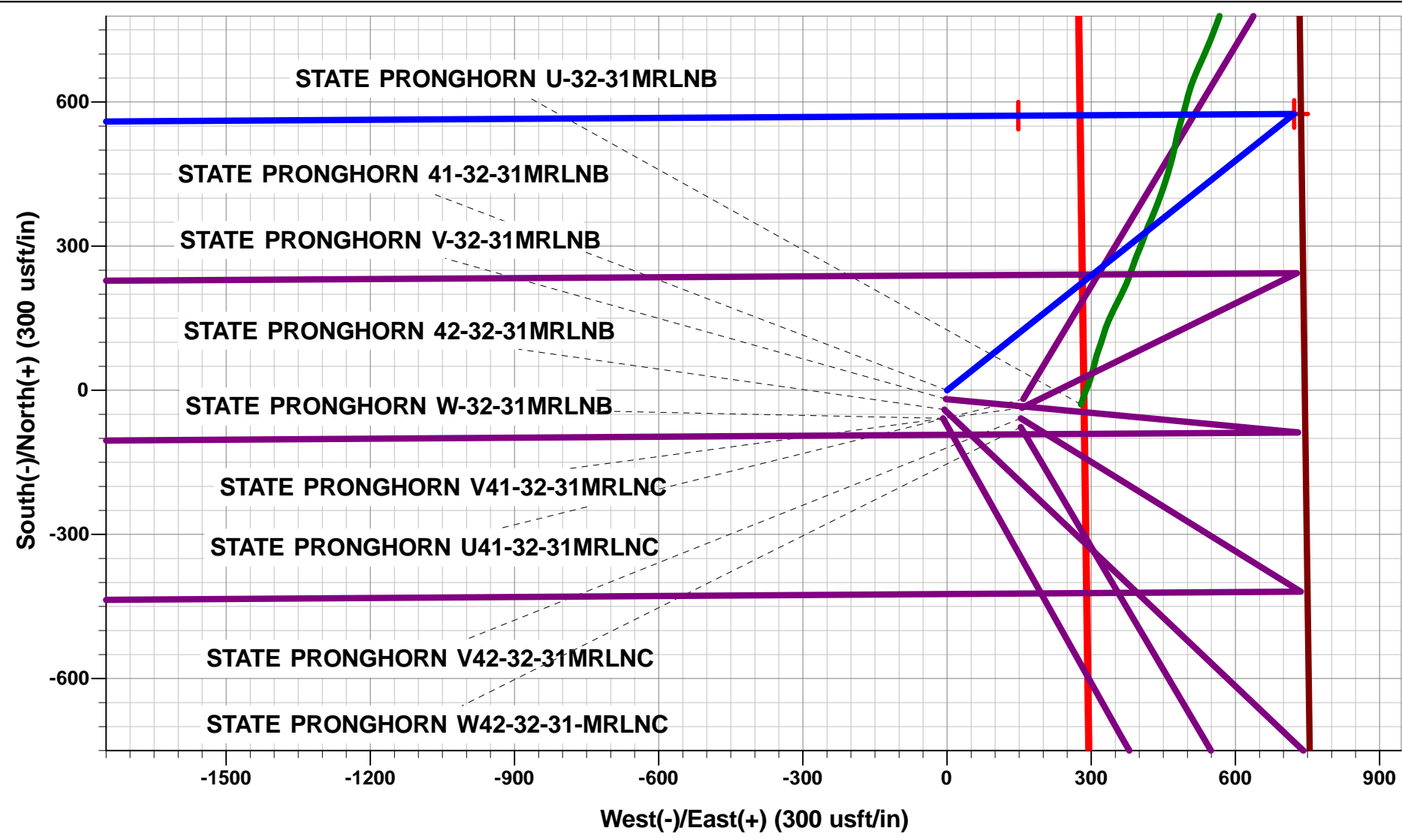




Project: WELD COUNTY, COLORADO (NAD 83)
Site: NE NE SEC. 32 T5N R61W 6th P.M.
Well: STATE PRONGHORN 41-32-31MRLNB
Wellbore: ORIGINAL WELLBORE
Design: PROPOSAL #1

ANNOTATIONS								
TVD	MD	Inc	Azi	+N/-S	+E/-W	VSec	Dep	Annotation
1100.0	1100.0	0.00	0.00	0.0	0.0	0.0	0.0	START NUDGE (2°/100ft BUR)
1800.2	1807.4	14.15	51.46	54.1	68.0	-63.5	86.9	EOB TO 14.15° INC
4773.5	4873.6	14.15	51.46	521.1	654.2	-611.0	836.4	END OF TANGENT
5473.7	5581.0	0.00	0.00	575.2	722.2	-674.5	923.3	EOD TO VERTICAL
5503.7	5611.0	0.00	0.00	575.2	722.2	-674.5	923.3	KOP (12°/100ft BUR)
5964.9	6236.0	75.00	269.64	573.0	368.3	-321.9	1277.2	START OF TANGENT
5990.8	6336.0	75.00	269.64	572.4	271.7	-225.6	1373.8	END OF TANGENT
6007.0	6461.0	90.00	269.64	571.6	148.2	-102.5	1497.3	7" ICP *NEW* - STATE PRONGHORN 41-32-31MRLNB
6007.0	13283.6	90.00	269.65	529.2	-6674.3	6695.2	8319.9	BHL - STATE PRONGHORN 41-32-31MRLNB

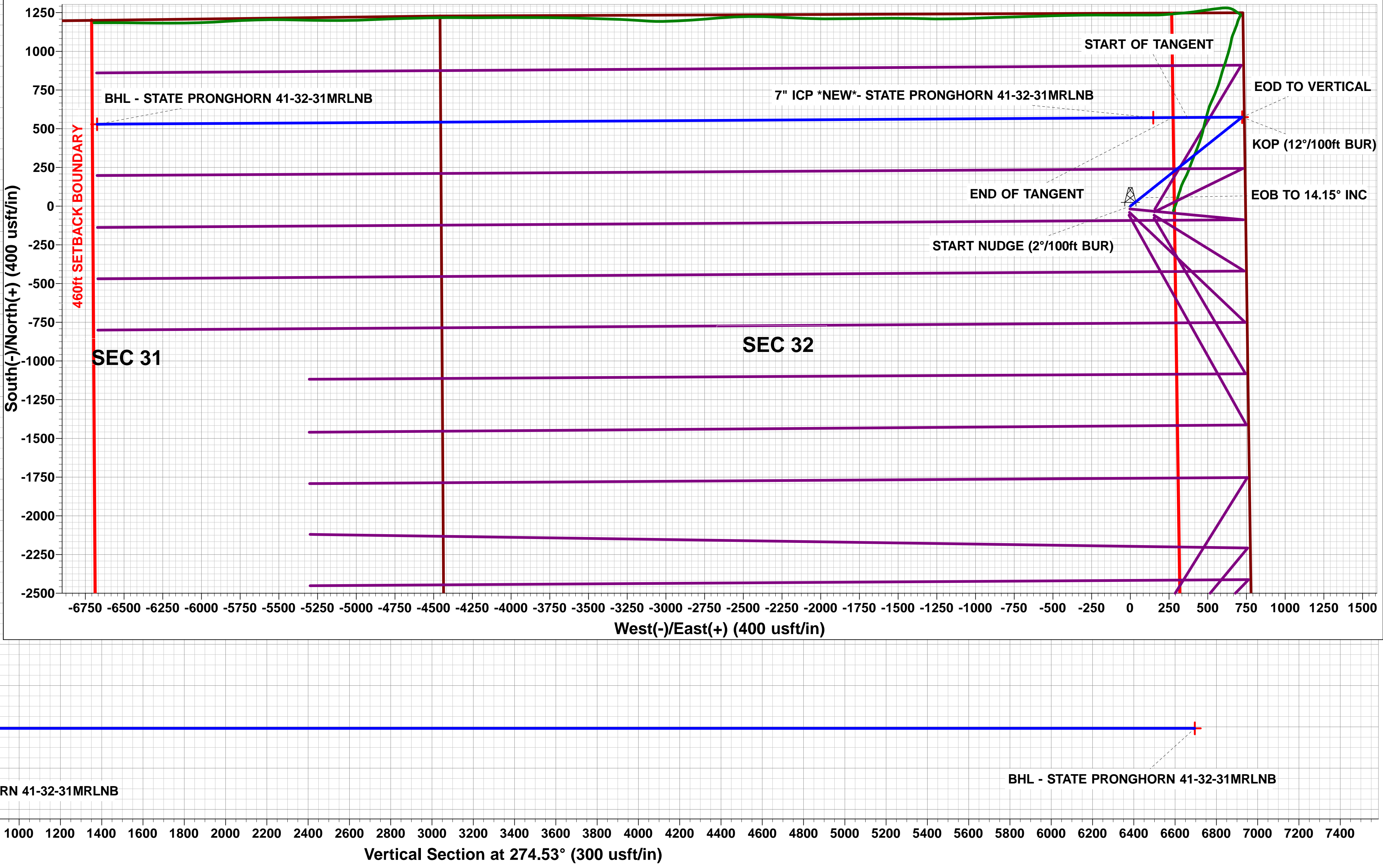
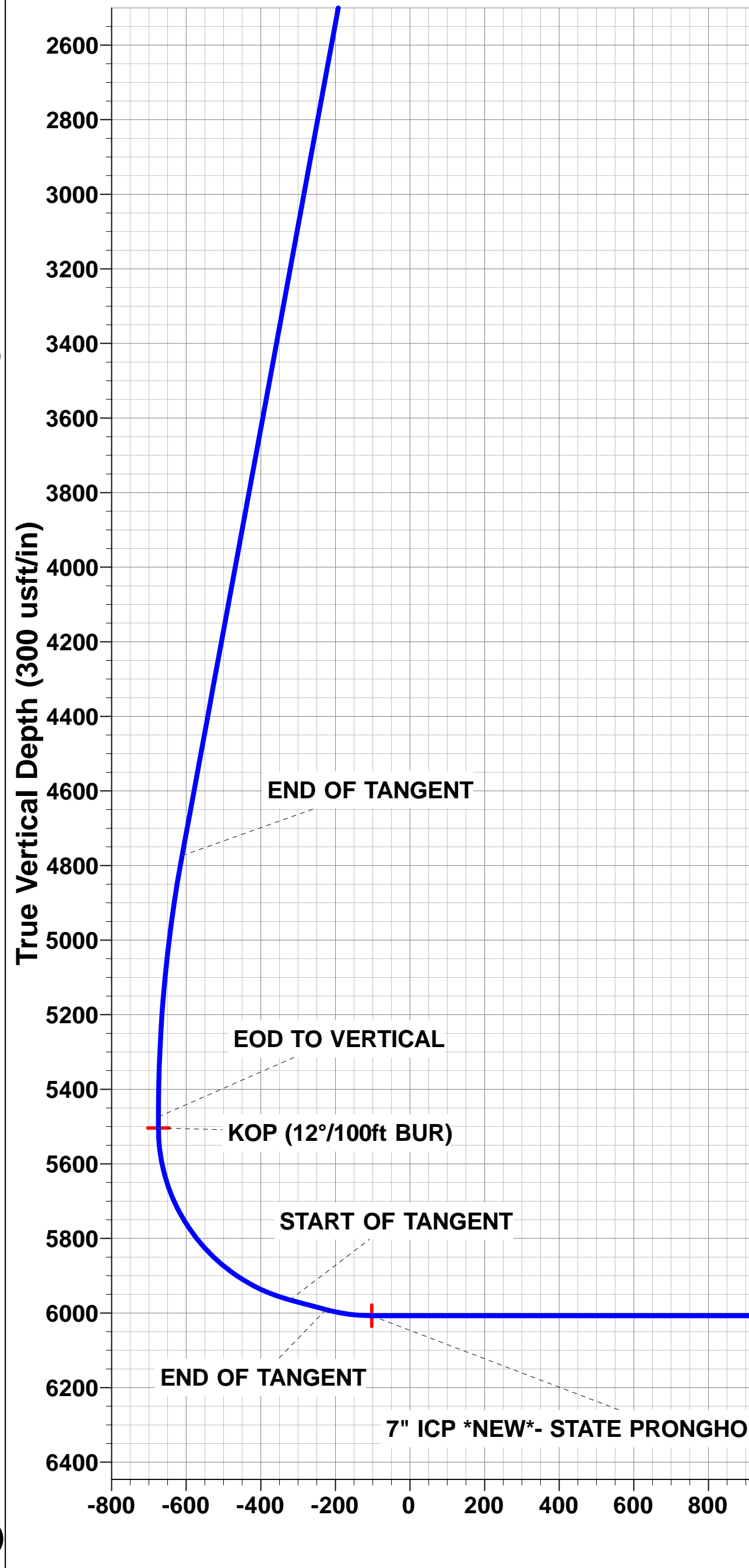
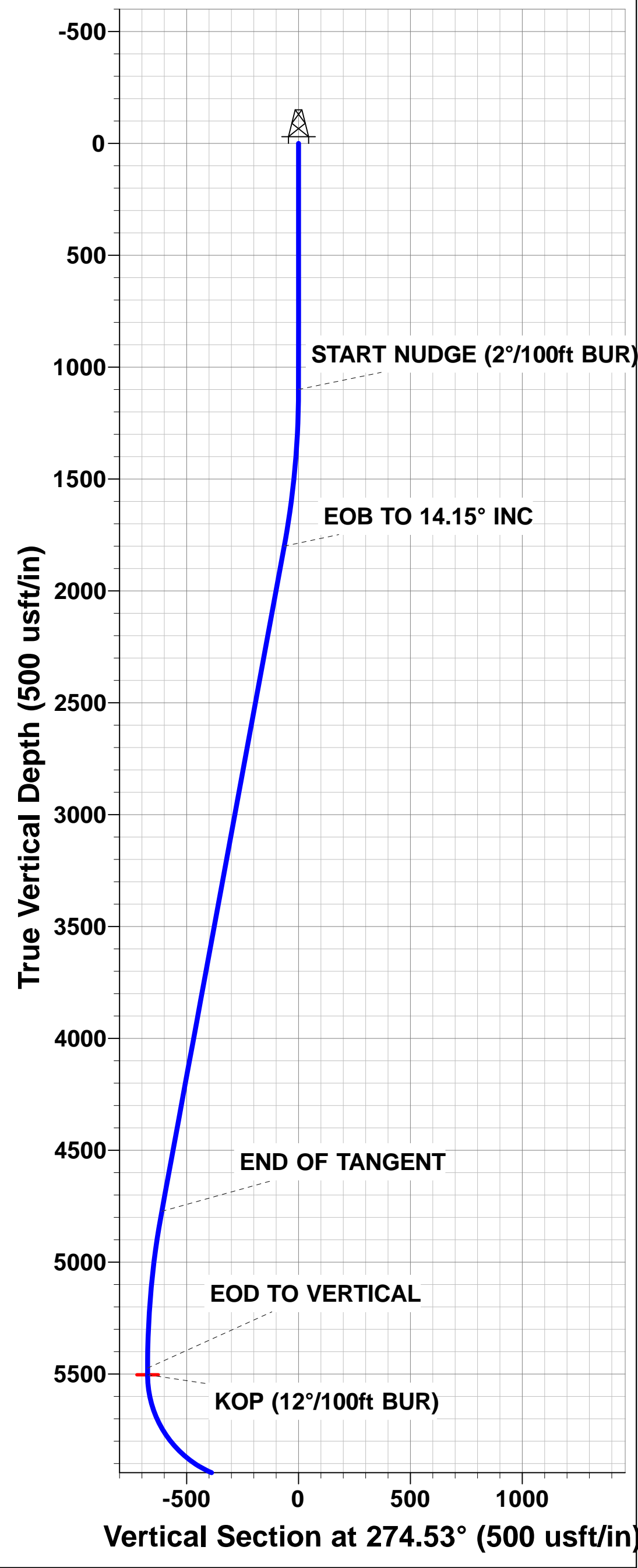
WELLBORE TARGET DETAILS (LAT/LONG)					
Name	TVD	+N/-S	+E/-W	Latitude	Longitude
KOP - STATE PRONGHORN 41-32-31MRLNB	5503.7	575.2	722.2	40.362719	-104.223598
BHL - STATE PRONGHORN 41-32-31MRLNB	6007.0	529.2	-6674.3	40.362590	-104.250140
7" ICP *NEW*- STATE PRONGHORN 41-32-31MRLNB	6007.0	571.6	148.2	40.362709	-104.225658



PROPOSED LOCAL COORDINATES:
SHL: 1246ft FNL & 745ft FEL of Sec 32
7" ICP *NEW*: 674ft FSL & 589ft FEL of Sec 32
BHL: 674ft FNL & 2221ft FEL of Sec 31

Azimuths to True North
Magnetic North: 8.11°

Magnetic Field
Strength: 52633.9snT
Dip Angle: 66.95°
Date: 04/09/2015
Model: IGRF2015



Database:	EDM 5000.1 Single User Db	Local Co-ordinate Reference:	Well STATE PRONGHORN 41-32-31MRLNB
Company:	BONANZA CREEK ENERGY INC.	TVD Reference:	KB-EST @ 4582.0usft (Original Well Elev)
Project:	WELD COUNTY, COLORADO (NAD 83)	MD Reference:	KB-EST @ 4582.0usft (Original Well Elev)
Site:	NE NE SEC. 32 T5N R61W 6th P.M.	North Reference:	True
Well:	STATE PRONGHORN 41-32-31MRLNB	Survey Calculation Method:	Minimum Curvature
Wellbore:	ORIGINAL WELLBORE		
Design:	PROPOSAL #1		

Project	WELD COUNTY, COLORADO (NAD 83)		
Map System:	US State Plane 1983	System Datum:	Mean Sea Level
Geo Datum:	North American Datum 1983		
Map Zone:	Colorado Northern Zone		Using geodetic scale factor

Site	NE NE SEC. 32 T5N R61W 6th P.M.		
Site Position:		Northing:	1,376,924.91 usft
From:	Lat/Long	Easting:	3,355,259.04 usft
Position Uncertainty:	0.0 usft	Slot Radius:	1.10000ft
		Latitude:	40.361050
		Longitude:	-104.225120
		Grid Convergence:	0.82 °

Well	STATE PRONGHORN 41-32-31MRLNB					
Well Position	+N/-S	32.8 usft	Northing:	1,376,953.40 usft	Latitude:	40.361140
	+E/-W	-298.2 usft	Easting:	3,354,960.43 usft	Longitude:	-104.226190
Position Uncertainty		0.0 usft	Wellhead Elevation:	usft	Ground Level:	4,565.0 usft

Wellbore	ORIGINAL WELLBORE				
Magnetics	Model Name	Sample Date	Declination (°)	Dip Angle (°)	Field Strength (nT)
	IGRF2015	04/09/2015	8.11	66.95	52,634

Design	PROPOSAL #1			
Audit Notes:				
Version:	Phase:	PROTOTYPE	Tie On Depth:	0.0
Vertical Section:	Depth From (TVD) (usft)	+N/-S (usft)	+E/-W (usft)	Direction (°)
	6,007.0	0.0	0.0	274.53

Plan Sections											
MD (usft)	Inc (°)	Azi (°)	Vertical Depth	SS (usft)	+N/-S (usft)	+E/-W (usft)	Dogleg Rate (°/100usf)	Build Rate (°/100usf)	Turn Rate (°/100usf)	TFO (°)	Target
0.0	0.00	0.00	0.0	-4,582.0	0.0	0.0	0.00	0.00	0.00	0.00	
1,100.0	0.00	0.00	1,100.0	-3,482.0	0.0	0.0	0.00	0.00	0.00	0.00	
1,807.4	14.15	51.46	1,800.2	-2,781.8	54.1	68.0	2.00	2.00	0.00	51.46	
4,873.6	14.15	51.46	4,773.5	191.5	521.1	654.2	0.00	0.00	0.00	0.00	
5,581.0	0.00	0.00	5,473.7	891.7	575.2	722.2	2.00	-2.00	0.00	180.00	
5,611.0	0.00	0.00	5,503.7	921.7	575.2	722.2	0.00	0.00	0.00	0.00	KOP - STATE PRO
6,236.0	75.00	269.64	5,964.9	1,382.9	573.0	368.3	12.00	12.00	0.00	269.64	
6,336.0	75.00	269.64	5,990.8	1,408.8	572.4	271.7	0.00	0.00	0.00	0.00	
6,461.0	90.00	269.64	6,007.0	1,425.0	571.6	148.2	12.00	12.00	0.00	0.00	
13,283.6	90.00	269.65	6,007.0	1,425.0	529.2	-6,674.3	0.00	0.00	0.00	83.82	BHL - STATE PROI

Database:	EDM 5000.1 Single User Db	Local Co-ordinate Reference:	Well STATE PRONGHORN 41-32-31MRLNB
Company:	BONANZA CREEK ENERGY INC.	TVD Reference:	KB-EST @ 4582.0usft (Original Well Elev)
Project:	WELD COUNTY, COLORADO (NAD 83)	MD Reference:	KB-EST @ 4582.0usft (Original Well Elev)
Site:	NE NE SEC. 32 T5N R61W 6th P.M.	North Reference:	True
Well:	STATE PRONGHORN 41-32-31MRLNB	Survey Calculation Method:	Minimum Curvature
Wellbore:	ORIGINAL WELLBORE		
Design:	PROPOSAL #1		

Planned Survey

MD (usft)	Inc (°)	Azi (°)	TVD (usft)	SS (usft)	+N/-S (usft)	+E/-W (usft)	Vertical Section (usft)	Dogleg Rate (°/100usft)	Build Rate (°/100usft)	Turn Rate (°/100usft)
0.0	0.00	0.00	0.0	4,582.00	0.0	0.0	0.0	0.00	0.00	0.00
100.0	0.00	0.00	100.0	4,482.00	0.0	0.0	0.0	0.00	0.00	0.00
200.0	0.00	0.00	200.0	4,382.00	0.0	0.0	0.0	0.00	0.00	0.00
300.0	0.00	0.00	300.0	4,282.00	0.0	0.0	0.0	0.00	0.00	0.00
400.0	0.00	0.00	400.0	4,182.00	0.0	0.0	0.0	0.00	0.00	0.00
500.0	0.00	0.00	500.0	4,082.00	0.0	0.0	0.0	0.00	0.00	0.00
600.0	0.00	0.00	600.0	3,982.00	0.0	0.0	0.0	0.00	0.00	0.00
700.0	0.00	0.00	700.0	3,882.00	0.0	0.0	0.0	0.00	0.00	0.00
800.0	0.00	0.00	800.0	3,782.00	0.0	0.0	0.0	0.00	0.00	0.00
900.0	0.00	0.00	900.0	3,682.00	0.0	0.0	0.0	0.00	0.00	0.00
1,000.0	0.00	0.00	1,000.0	3,582.00	0.0	0.0	0.0	0.00	0.00	0.00
START NUDGE (2°/100ft BUR)										
1,100.0	0.00	0.00	1,100.0	3,482.00	0.0	0.0	0.0	0.00	0.00	0.00
1,200.0	2.00	51.46	1,200.0	3,382.02	1.1	1.4	-1.3	2.00	2.00	0.00
1,300.0	4.00	51.46	1,299.8	3,282.16	4.3	5.5	-5.1	2.00	2.00	0.00
1,400.0	6.00	51.46	1,399.5	3,182.55	9.8	12.3	-11.5	2.00	2.00	0.00
1,500.0	8.00	51.46	1,498.7	3,083.30	17.4	21.8	-20.4	2.00	2.00	0.00
1,600.0	10.00	51.46	1,597.5	2,984.53	27.1	34.0	-31.8	2.00	2.00	0.00
1,700.0	12.00	51.46	1,695.6	2,886.38	39.0	49.0	-45.7	2.00	2.00	0.00
1,800.0	14.00	51.46	1,793.1	2,788.94	53.0	66.6	-62.2	2.00	2.00	0.00
EOB TO 14.15° INC										
1,807.4	14.15	51.46	1,800.2	2,781.76	54.1	68.0	-63.5	2.00	2.00	0.00
1,900.0	14.15	51.46	1,890.0	2,691.98	68.2	85.7	-80.0	0.00	0.00	0.00
2,000.0	14.15	51.46	1,987.0	2,595.01	83.5	104.8	-97.9	0.00	0.00	0.00
2,100.0	14.15	51.46	2,084.0	2,498.04	98.7	123.9	-115.7	0.00	0.00	0.00
2,200.0	14.15	51.46	2,180.9	2,401.08	113.9	143.0	-133.6	0.00	0.00	0.00
2,300.0	14.15	51.46	2,277.9	2,304.11	129.1	162.2	-151.4	0.00	0.00	0.00
2,400.0	14.15	51.46	2,374.9	2,207.14	144.4	181.3	-169.3	0.00	0.00	0.00
2,500.0	14.15	51.46	2,471.8	2,110.18	159.6	200.4	-187.2	0.00	0.00	0.00
2,600.0	14.15	51.46	2,568.8	2,013.21	174.8	219.5	-205.0	0.00	0.00	0.00
2,700.0	14.15	51.46	2,665.8	1,916.24	190.1	238.6	-222.9	0.00	0.00	0.00
2,800.0	14.15	51.46	2,762.7	1,819.28	205.3	257.8	-240.7	0.00	0.00	0.00
2,900.0	14.15	51.46	2,859.7	1,722.31	220.5	276.9	-258.6	0.00	0.00	0.00
3,000.0	14.15	51.46	2,956.7	1,625.34	235.7	296.0	-276.4	0.00	0.00	0.00
3,100.0	14.15	51.46	3,053.6	1,528.38	251.0	315.1	-294.3	0.00	0.00	0.00
3,200.0	14.15	51.46	3,150.6	1,431.41	266.2	334.2	-312.1	0.00	0.00	0.00
3,300.0	14.15	51.46	3,247.6	1,334.44	281.4	353.4	-330.0	0.00	0.00	0.00
3,400.0	14.15	51.46	3,344.5	1,237.47	296.7	372.5	-347.9	0.00	0.00	0.00
3,500.0	14.15	51.46	3,441.5	1,140.51	311.9	391.6	-365.7	0.00	0.00	0.00
3,600.0	14.15	51.46	3,538.5	1,043.54	327.1	410.7	-383.6	0.00	0.00	0.00
3,700.0	14.15	51.46	3,635.4	946.57	342.3	429.8	-401.4	0.00	0.00	0.00
3,800.0	14.15	51.46	3,732.4	849.61	357.6	449.0	-419.3	0.00	0.00	0.00
3,900.0	14.15	51.46	3,829.4	752.64	372.8	468.1	-437.1	0.00	0.00	0.00
4,000.0	14.15	51.46	3,926.3	655.67	388.0	487.2	-455.0	0.00	0.00	0.00
4,100.0	14.15	51.46	4,023.3	558.71	403.3	506.3	-472.9	0.00	0.00	0.00
4,200.0	14.15	51.46	4,120.3	461.74	418.5	525.4	-490.7	0.00	0.00	0.00
4,300.0	14.15	51.46	4,217.2	364.77	433.7	544.5	-508.6	0.00	0.00	0.00
4,400.0	14.15	51.46	4,314.2	267.81	448.9	563.7	-526.4	0.00	0.00	0.00
4,500.0	14.15	51.46	4,411.2	170.84	464.2	582.8	-544.3	0.00	0.00	0.00
4,600.0	14.15	51.46	4,508.1	73.87	479.4	601.9	-562.1	0.00	0.00	0.00
4,700.0	14.15	51.46	4,605.1	-23.09	494.6	621.0	-580.0	0.00	0.00	0.00
4,800.0	14.15	51.46	4,702.1	-120.06	509.8	640.1	-597.8	0.00	0.00	0.00
END OF TANGENT										

Database:	EDM 5000.1 Single User Db	Local Co-ordinate Reference:	Well STATE PRONGHORN 41-32-31MRLNB
Company:	BONANZA CREEK ENERGY INC.	TVD Reference:	KB-EST @ 4582.0usft (Original Well Elev)
Project:	WELD COUNTY, COLORADO (NAD 83)	MD Reference:	KB-EST @ 4582.0usft (Original Well Elev)
Site:	NE NE SEC. 32 T5N R61W 6th P.M.	North Reference:	True
Well:	STATE PRONGHORN 41-32-31MRLNB	Survey Calculation Method:	Minimum Curvature
Wellbore:	ORIGINAL WELLBORE		
Design:	PROPOSAL #1		

Planned Survey

MD (usft)	Inc (°)	Azi (°)	TVD (usft)	SS (usft)	+N/-S (usft)	+E/-W (usft)	Vertical Section (usft)	Dogleg Rate (°/100usft)	Build Rate (°/100usft)	Turn Rate (°/100usft)
4,873.6	14.15	51.46	4,773.5	-191.46	521.1	654.2	-611.0	0.00	0.00	0.00
4,900.0	13.62	51.46	4,799.1	-217.06	525.0	659.2	-615.6	2.00	-2.00	0.00
5,000.0	11.62	51.46	4,896.6	-314.63	538.6	676.3	-631.6	2.00	-2.00	0.00
5,100.0	9.62	51.46	4,994.9	-412.92	550.1	690.7	-645.0	2.00	-2.00	0.00
5,200.0	7.62	51.46	5,093.8	-511.78	559.4	702.4	-656.0	2.00	-2.00	0.00
5,300.0	5.62	51.46	5,193.1	-611.11	566.6	711.4	-664.4	2.00	-2.00	0.00
5,400.0	3.62	51.46	5,292.8	-710.78	571.6	717.7	-670.3	2.00	-2.00	0.00
5,500.0	1.62	51.46	5,392.7	-810.67	574.5	721.3	-673.6	2.00	-2.00	0.00
EOD TO VERTICAL										
5,581.0	0.00	0.00	5,473.7	-891.70	575.2	722.2	-674.5	2.00	-2.00	0.00
5,600.0	0.00	0.00	5,492.7	-910.66	575.2	722.2	-674.5	0.00	0.00	0.00
KOP (12°/100ft BUR)										
5,611.0	0.00	0.00	5,503.7	-921.70	575.2	722.2	-674.5	0.00	0.00	0.00
5,700.0	10.68	269.64	5,592.1	-1,010.14	575.1	713.9	-666.2	12.00	12.00	0.00
5,800.0	22.68	269.64	5,687.8	-1,105.76	575.0	685.3	-637.7	12.00	12.00	0.00
5,900.0	34.68	269.64	5,775.3	-1,193.34	574.7	637.4	-590.0	12.00	12.00	0.00
6,000.0	46.68	269.64	5,851.0	-1,269.04	574.3	572.3	-525.2	12.00	12.00	0.00
6,100.0	58.68	269.64	5,911.6	-1,329.57	573.8	493.0	-446.1	12.00	12.00	0.00
6,200.0	70.68	269.64	5,954.3	-1,372.26	573.2	402.7	-356.2	12.00	12.00	0.00
START OF TANGENT										
6,236.0	75.00	269.64	5,964.9	-1,382.90	573.0	368.3	-321.9	12.00	12.00	0.00
6,300.0	75.00	269.64	5,981.4	-1,399.45	572.6	306.5	-260.3	0.00	0.00	0.00
END OF TANGENT										
6,336.0	75.00	269.64	5,990.8	-1,408.78	572.4	271.7	-225.6	0.00	0.00	0.00
6,400.0	82.68	269.64	6,003.2	-1,421.15	572.0	209.0	-163.2	12.00	12.00	0.00
7" ICP *NEW* - STATE PRONGHORN 41-32-31MRLNB										
6,461.0	90.00	269.64	6,007.0	-1,425.05	571.6	148.2	-102.5	12.00	12.00	0.00
6,500.0	90.00	269.64	6,007.0	-1,425.05	571.3	109.2	-63.7	0.00	0.00	0.00
6,600.0	90.00	269.64	6,007.0	-1,425.05	570.7	9.2	35.9	0.00	0.00	0.00
6,700.0	90.00	269.64	6,007.0	-1,425.05	570.1	-90.8	135.6	0.00	0.00	0.00
6,800.0	90.00	269.64	6,007.0	-1,425.05	569.5	-190.8	235.2	0.00	0.00	0.00
6,900.0	90.00	269.64	6,007.0	-1,425.05	568.8	-290.8	334.8	0.00	0.00	0.00
7,000.0	90.00	269.64	6,007.0	-1,425.05	568.2	-390.8	434.5	0.00	0.00	0.00
7,100.0	90.00	269.64	6,007.0	-1,425.05	567.6	-490.8	534.1	0.00	0.00	0.00
7,200.0	90.00	269.64	6,007.0	-1,425.05	567.0	-590.8	633.8	0.00	0.00	0.00
7,300.0	90.00	269.64	6,007.0	-1,425.05	566.3	-690.8	733.4	0.00	0.00	0.00
7,400.0	90.00	269.64	6,007.0	-1,425.05	565.7	-790.8	833.0	0.00	0.00	0.00
7,500.0	90.00	269.64	6,007.0	-1,425.05	565.1	-890.8	932.7	0.00	0.00	0.00
7,600.0	90.00	269.64	6,007.0	-1,425.05	564.4	-990.8	1,032.3	0.00	0.00	0.00
7,700.0	90.00	269.64	6,007.0	-1,425.05	563.8	-1,090.8	1,131.9	0.00	0.00	0.00
7,800.0	90.00	269.64	6,007.0	-1,425.04	563.2	-1,190.8	1,231.6	0.00	0.00	0.00
7,900.0	90.00	269.64	6,007.0	-1,425.04	562.6	-1,290.8	1,331.2	0.00	0.00	0.00
8,000.0	90.00	269.64	6,007.0	-1,425.04	561.9	-1,390.8	1,430.8	0.00	0.00	0.00
8,100.0	90.00	269.64	6,007.0	-1,425.04	561.3	-1,490.8	1,530.5	0.00	0.00	0.00
8,200.0	90.00	269.64	6,007.0	-1,425.04	560.7	-1,590.8	1,630.1	0.00	0.00	0.00
8,300.0	90.00	269.64	6,007.0	-1,425.04	560.1	-1,690.8	1,729.7	0.00	0.00	0.00
8,400.0	90.00	269.64	6,007.0	-1,425.04	559.4	-1,790.8	1,829.4	0.00	0.00	0.00
8,500.0	90.00	269.64	6,007.0	-1,425.04	558.8	-1,890.8	1,929.0	0.00	0.00	0.00
8,600.0	90.00	269.64	6,007.0	-1,425.04	558.2	-1,990.8	2,028.7	0.00	0.00	0.00
8,700.0	90.00	269.64	6,007.0	-1,425.04	557.6	-2,090.8	2,128.3	0.00	0.00	0.00
8,800.0	90.00	269.64	6,007.0	-1,425.04	556.9	-2,190.8	2,227.9	0.00	0.00	0.00
8,900.0	90.00	269.64	6,007.0	-1,425.04	556.3	-2,290.8	2,327.6	0.00	0.00	0.00
9,000.0	90.00	269.64	6,007.0	-1,425.04	555.7	-2,390.8	2,427.2	0.00	0.00	0.00
9,100.0	90.00	269.64	6,007.0	-1,425.04	555.1	-2,490.8	2,526.8	0.00	0.00	0.00

Database:	EDM 5000.1 Single User Db	Local Co-ordinate Reference:	Well STATE PRONGHORN 41-32-31MRLNB
Company:	BONANZA CREEK ENERGY INC.	TVD Reference:	KB-EST @ 4582.0usft (Original Well Elev)
Project:	WELD COUNTY, COLORADO (NAD 83)	MD Reference:	KB-EST @ 4582.0usft (Original Well Elev)
Site:	NE NE SEC. 32 T5N R61W 6th P.M.	North Reference:	True
Well:	STATE PRONGHORN 41-32-31MRLNB	Survey Calculation Method:	Minimum Curvature
Wellbore:	ORIGINAL WELLBORE		
Design:	PROPOSAL #1		

Planned Survey

MD (usft)	Inc (°)	Azi (°)	TVD (usft)	SS (usft)	+N/-S (usft)	+E/-W (usft)	Vertical Section (usft)	Dogleg Rate (°/100usft)	Build Rate (°/100usft)	Turn Rate (°/100usft)
9,200.0	90.00	269.64	6,007.0	-1,425.04	554.5	-2,590.8	2,626.5	0.00	0.00	0.00
9,300.0	90.00	269.64	6,007.0	-1,425.04	553.8	-2,690.7	2,726.1	0.00	0.00	0.00
9,400.0	90.00	269.64	6,007.0	-1,425.04	553.2	-2,790.7	2,825.7	0.00	0.00	0.00
9,500.0	90.00	269.64	6,007.0	-1,425.04	552.6	-2,890.7	2,925.4	0.00	0.00	0.00
9,600.0	90.00	269.64	6,007.0	-1,425.04	552.0	-2,990.7	3,025.0	0.00	0.00	0.00
9,700.0	90.00	269.64	6,007.0	-1,425.04	551.3	-3,090.7	3,124.6	0.00	0.00	0.00
9,800.0	90.00	269.64	6,007.0	-1,425.04	550.7	-3,190.7	3,224.3	0.00	0.00	0.00
9,900.0	90.00	269.64	6,007.0	-1,425.03	550.1	-3,290.7	3,323.9	0.00	0.00	0.00
10,000.0	90.00	269.64	6,007.0	-1,425.03	549.5	-3,390.7	3,423.6	0.00	0.00	0.00
10,100.0	90.00	269.64	6,007.0	-1,425.03	548.9	-3,490.7	3,523.2	0.00	0.00	0.00
10,200.0	90.00	269.64	6,007.0	-1,425.03	548.2	-3,590.7	3,622.8	0.00	0.00	0.00
10,300.0	90.00	269.64	6,007.0	-1,425.03	547.6	-3,690.7	3,722.5	0.00	0.00	0.00
10,400.0	90.00	269.64	6,007.0	-1,425.03	547.0	-3,790.7	3,822.1	0.00	0.00	0.00
10,500.0	90.00	269.64	6,007.0	-1,425.03	546.4	-3,890.7	3,921.7	0.00	0.00	0.00
10,600.0	90.00	269.64	6,007.0	-1,425.03	545.7	-3,990.7	4,021.4	0.00	0.00	0.00
10,700.0	90.00	269.64	6,007.0	-1,425.03	545.1	-4,090.7	4,121.0	0.00	0.00	0.00
10,800.0	90.00	269.64	6,007.0	-1,425.03	544.5	-4,190.7	4,220.6	0.00	0.00	0.00
10,900.0	90.00	269.64	6,007.0	-1,425.03	543.9	-4,290.7	4,320.3	0.00	0.00	0.00
11,000.0	90.00	269.64	6,007.0	-1,425.03	543.3	-4,390.7	4,419.9	0.00	0.00	0.00
11,100.0	90.00	269.64	6,007.0	-1,425.03	542.6	-4,490.7	4,519.6	0.00	0.00	0.00
11,200.0	90.00	269.65	6,007.0	-1,425.02	542.0	-4,590.7	4,619.2	0.00	0.00	0.00
11,300.0	90.00	269.65	6,007.0	-1,425.02	541.4	-4,690.7	4,718.8	0.00	0.00	0.00
11,400.0	90.00	269.65	6,007.0	-1,425.02	540.8	-4,790.7	4,818.5	0.00	0.00	0.00
11,500.0	90.00	269.65	6,007.0	-1,425.02	540.2	-4,890.7	4,918.1	0.00	0.00	0.00
11,600.0	90.00	269.65	6,007.0	-1,425.02	539.5	-4,990.7	5,017.7	0.00	0.00	0.00
11,700.0	90.00	269.65	6,007.0	-1,425.02	538.9	-5,090.7	5,117.4	0.00	0.00	0.00
11,800.0	90.00	269.65	6,007.0	-1,425.02	538.3	-5,190.7	5,217.0	0.00	0.00	0.00
11,900.0	90.00	269.65	6,007.0	-1,425.02	537.7	-5,290.7	5,316.6	0.00	0.00	0.00
12,000.0	90.00	269.65	6,007.0	-1,425.02	537.1	-5,390.7	5,416.3	0.00	0.00	0.00
12,100.0	90.00	269.65	6,007.0	-1,425.01	536.5	-5,490.7	5,515.9	0.00	0.00	0.00
12,200.0	90.00	269.65	6,007.0	-1,425.01	535.8	-5,590.7	5,615.6	0.00	0.00	0.00
12,300.0	90.00	269.65	6,007.0	-1,425.01	535.2	-5,690.7	5,715.2	0.00	0.00	0.00
12,400.0	90.00	269.65	6,007.0	-1,425.01	534.6	-5,790.7	5,814.8	0.00	0.00	0.00
12,500.0	90.00	269.65	6,007.0	-1,425.01	534.0	-5,890.7	5,914.5	0.00	0.00	0.00
12,600.0	90.00	269.65	6,007.0	-1,425.01	533.4	-5,990.7	6,014.1	0.00	0.00	0.00
12,700.0	90.00	269.65	6,007.0	-1,425.01	532.8	-6,090.7	6,113.7	0.00	0.00	0.00
12,800.0	90.00	269.65	6,007.0	-1,425.01	532.1	-6,190.7	6,213.4	0.00	0.00	0.00
12,900.0	90.00	269.65	6,007.0	-1,425.01	531.5	-6,290.7	6,313.0	0.00	0.00	0.00
13,000.0	90.00	269.65	6,007.0	-1,425.00	530.9	-6,390.7	6,412.6	0.00	0.00	0.00
13,100.0	90.00	269.65	6,007.0	-1,425.00	530.3	-6,490.7	6,512.3	0.00	0.00	0.00
13,200.0	90.00	269.65	6,007.0	-1,425.00	529.7	-6,590.7	6,611.9	0.00	0.00	0.00
BHL - STATE PRONGHORN 41-32-31MRLNB										
13,283.6	90.00	269.65	6,007.0	-1,425.00	529.2	-6,674.3	6,695.2	0.00	0.00	0.00

Database:	EDM 5000.1 Single User Db	Local Co-ordinate Reference:	Well STATE PRONGHORN 41-32-31MRLNB
Company:	BONANZA CREEK ENERGY INC.	TVD Reference:	KB-EST @ 4582.0usft (Original Well Elev)
Project:	WELD COUNTY, COLORADO (NAD 83)	MD Reference:	KB-EST @ 4582.0usft (Original Well Elev)
Site:	NE NE SEC. 32 T5N R61W 6th P.M.	North Reference:	True
Well:	STATE PRONGHORN 41-32-31MRLNB	Survey Calculation Method:	Minimum Curvature
Wellbore:	ORIGINAL WELLBORE		
Design:	PROPOSAL #1		

Plan Annotations

MD (usft)	TVD (usft)	Local Coordinates		Comment
		+N/-S (usft)	+E/-W (usft)	
1,100.0	1,100.0	0.0	0.0	START NUDGE (2°/100ft BUR)
1,807.4	1,800.2	54.1	68.0	EOB TO 14.15° INC
4,873.6	4,773.5	521.1	654.2	END OF TANGENT
5,581.0	5,473.7	575.2	722.2	EOD TO VERTICAL
5,611.0	5,503.7	575.2	722.2	KOP (12°/100ft BUR)
6,236.0	5,964.9	573.0	368.3	START OF TANGENT
6,336.0	5,990.8	572.4	271.7	END OF TANGENT
6,461.0	6,007.0	571.6	148.2	7" ICP *NEW* - STATE PRONGHORN 41-32-31MRLNB
13,283.6	6,007.0	529.2	-6,674.3	BHL - STATE PRONGHORN 41-32-31MRLNB