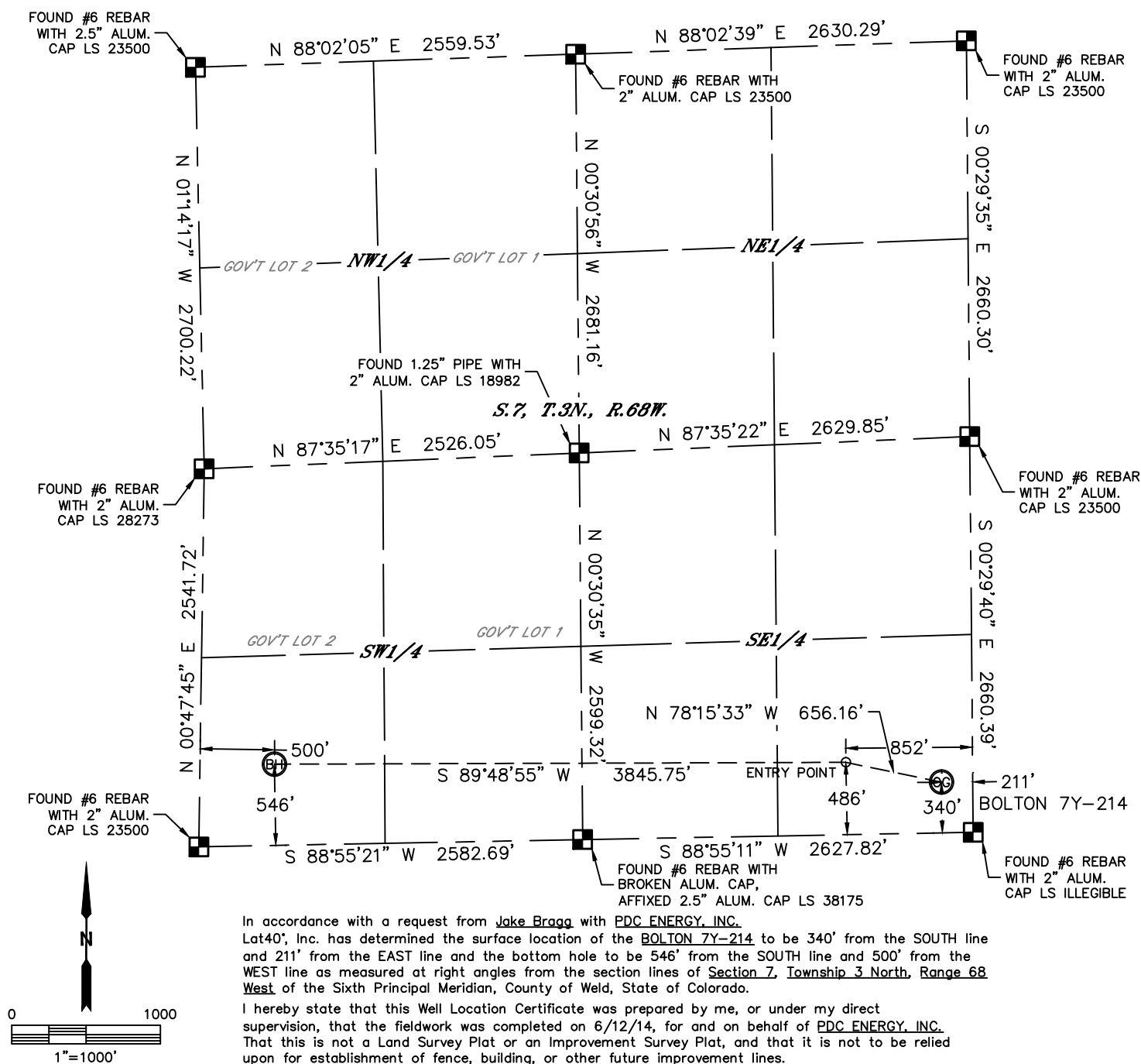


Lat40°, Inc. 1635 Foxtrail Drive, Suite 325 Loveland, CO 970-776-3321

WELL LOCATION CERTIFICATE

THIS MAP DOES NOT REPRESENT A BOUNDARY SURVEY



SECTION: 7
TOWNSHIP: 3N
RANGE: 68W



In accordance with a request from Jake Bragg with PDC ENERGY, INC. Lat40', Inc. has determined the surface location of the BOLTON 7Y-214 to be 340' from the SOUTH line and 211' from the EAST line and the bottom hole to be 546' from the SOUTH line and 500' from the WEST line as measured at right angles from the section lines of Section 7, Township 3 North, Range 68 West of the Sixth Principal Meridian, County of Weld, State of Colorado.

I hereby state that this Well Location Certificate was prepared by me, or under my direct supervision, that the fieldwork was completed on 6/12/14, for and on behalf of PDC ENERGY, INC. That this is not a Land Survey Plat or an Improvement Survey Plat, and that it is not to be relied upon for establishment of fence, building, or other future improvement lines.

NOTE:

- 1) Bearings shown are Grid Bearings of the Colorado State Plane Coordinate System, North Zone, North American Datum 1983. The lineal dimensions as contained herein are based upon the "U.S. Survey Foot."
- 2) Ground elevations are based on an observed GPS elevation (NAVD 1988 DATUM).
- 3) IMPROVEMENTS: See LOCATION DRAWING for all visible improvements within 500' of disturbed area.
- 4) SURFACE USE: PASTURE
- 5) INSTRUMENT OPERATOR: ADAM KELLY
- 6) NEAREST CULTURAL ITEMS:
- BUILDING: 580' NE
- BUILDING UNIT: 604' N
- HIGH OCCUPANCY BUILDING UNIT: 5280'+
- DESIGNATED OUTSIDE ACTIVITY AREA: 5280'+
- PUBLIC ROAD: 200' E (CR 3)
- ABOVEGROUND UTILITY: 235' E
- RAILROAD: 5280'+
- PROPERTY LINE: 211' E
- LEGEND
-  = ALIQUOT MONUMENT AS DE
-  = CALCULATED POSITION

SURFACE LOCATION

LAT: 40.23390°N
LONG: 105.03719°W
PDOP: 1.9
ELEV: 5151'
1/4,1/4: SESE


BOTTOM HOLE

LAT: 40.23430°N
LONG: 105.05326°W

ENTRY POINT

LAT: 40.23428°N
LONG: 105.03949°W

LEGEND

- = ALIQUOT MONUMENT AS DESCRIBED
 = CALCULATED POSITION

Brian T. Brinkman - On behalf of Lat40, Inc.

Colorado Licensed Professional
Land Surveyor No. 38175

DATE: 1/20/2015
PROJECT#: 2014102

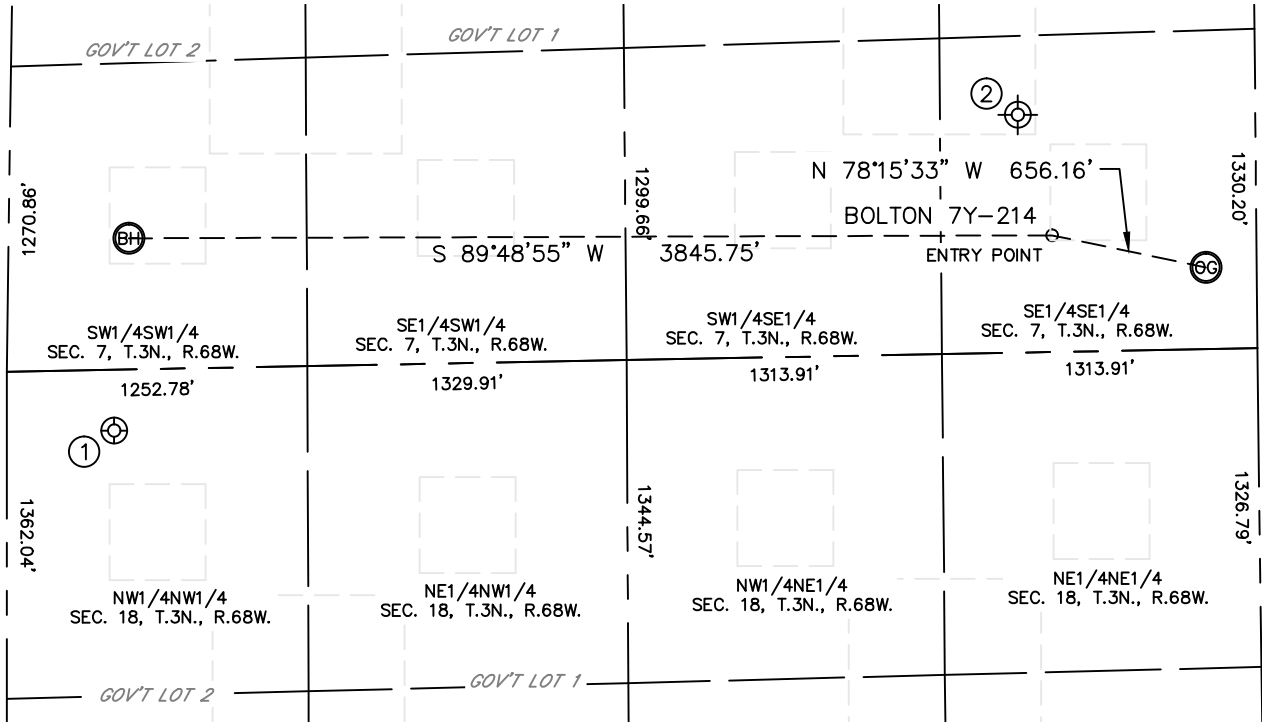


Lat40°, Inc. 1635 Foxtrail Drive, Suite 325 Loveland, CO 970-776-3321

SITE SKETCH

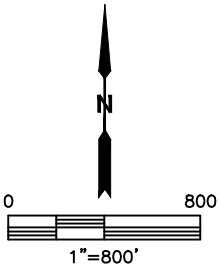
BOLTON 7Y-214

SECTION: 7
TOWNSHIP: 3N
RANGE: 68W



WELL NO.	WELL NAME	SHL FOOTAGE				SHL LAT°	SHL LONG°	PDOP	ELEV (FT.)	1/4/1/4
1	BILLINGS 22-18	253	FNL	447	FWL	40.23210	-105.05349	2.4	5213	NWNW
2	RADIO TOWER 1	990	FSL	990	FEL	40.23563	105.04006	NA	5154	SESE

NOTE: THE ABANDONED WELL DATA SHOWN IN RED ABOVE WAS OBTAINED FROM COGCC SCOUT CARDS.



DATE: 1/20/2015
PROJECT#: 2014102