

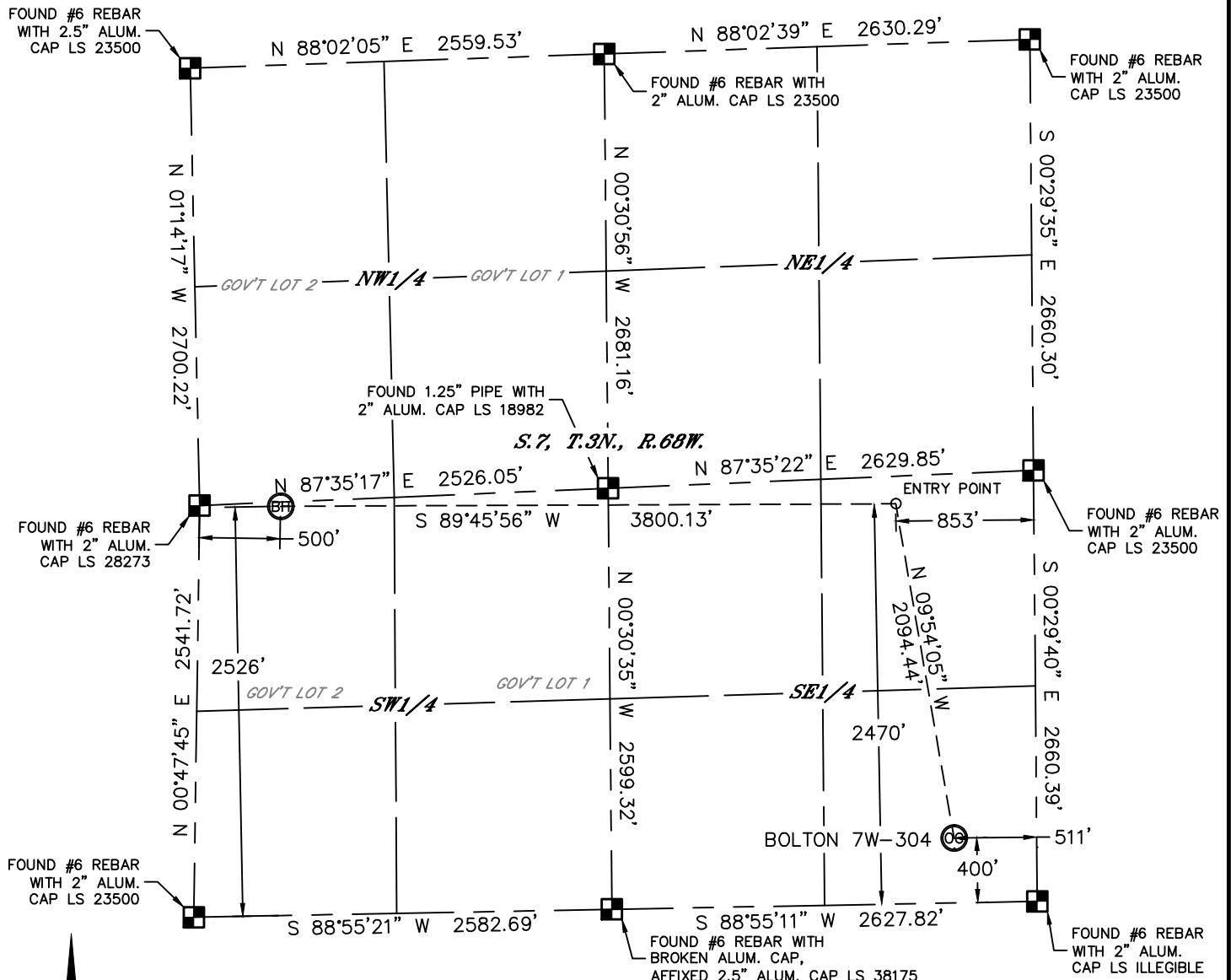


Lat40°, Inc. 1635 Foxtrail Drive, Suite 325 Loveland, CO 970-776-3321

WELL LOCATION CERTIFICATE

THIS MAP DOES NOT REPRESENT A BOUNDARY SURVEY

SECTION: 7
TOWNSHIP: 3N
RANGE: 68W



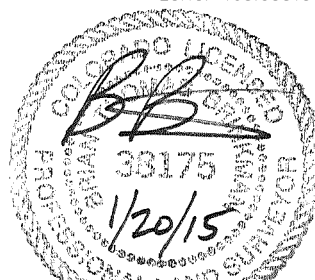
In accordance with a request from Jake Bragg with PDC ENERGY Lat40°, Inc. has determined the surface location of the BOLTON 7W-304 to be 400' from the SOUTH line and 511' from the EAST line and the bottom hole to be 2526' from the SOUTH line and 500' from the WEST line as measured at right angles from the section lines of Section 7, Township 3 North, Range 68 West of the Sixth Principal Meridian, County of Weld, State of Colorado.

I hereby state that this Well Location Certificate was prepared by me, or under my direct supervision, that the fieldwork was completed on 7/28/14, for and on behalf of PDC ENERGY. That this is not a Land Survey Plat or an Improvement Survey Plat, and that it is not to be relied upon for establishment of fence, building, or other future improvement lines.

SURFACE LOCATION
LAT: 40.23405°N
LONG: 105.03827°W
PDOP: 1.5
ELEV: 5152'
1/4,1/4: SESE

BOTTOM HOLE
LAT: 40.23973°N
LONG: 105.05313°W

ENTRY POINT
LAT: 40.23972°N
LONG: 105.03952°W



Brian T. Brinkman, on behalf of Lat40°, Inc.
Colorado Licensed Professional
Land Surveyor No. 38175
DATE: 1/20/2015
PROJECT#: 2014102

NOTE:

- 1) Bearings shown are Grid Bearings of the Colorado State Plane Coordinate System, North Zone, North American Datum 1983. The lineal dimensions as contained herein are based upon the "U.S. Survey Foot."
- 2) Ground elevations are based on an observed GPS elevation (NAVD 1988 DATUM).
- 3) IMPROVEMENTS: See LOCATION DRAWING for all visible improvements within 500' of disturbed area.
- 4) SURFACE USE: PASTURE
- 5) INSTRUMENT OPERATOR: BRIAN ROTTINGHAUS
- 6) NEAREST CULTURAL ITEMS:
BUILDING: ±653' NE
BUILDING UNIT: ±618' NE
HIGH OCCUPANCY BUILDING UNIT: 5280'+
DESIGNATED OUTSIDE ACTIVITY AREA: 5280'+
PUBLIC ROAD: ±338' S (CR 34)
ABOVEGROUND UTILITY: ±534' E
RAILROAD: 5280'+
PROPERTY LINE: ±323' NE

LEGEND

- = ALIQUOT MONUMENT AS DESCRIBED
○ = CALCULATED POSITION

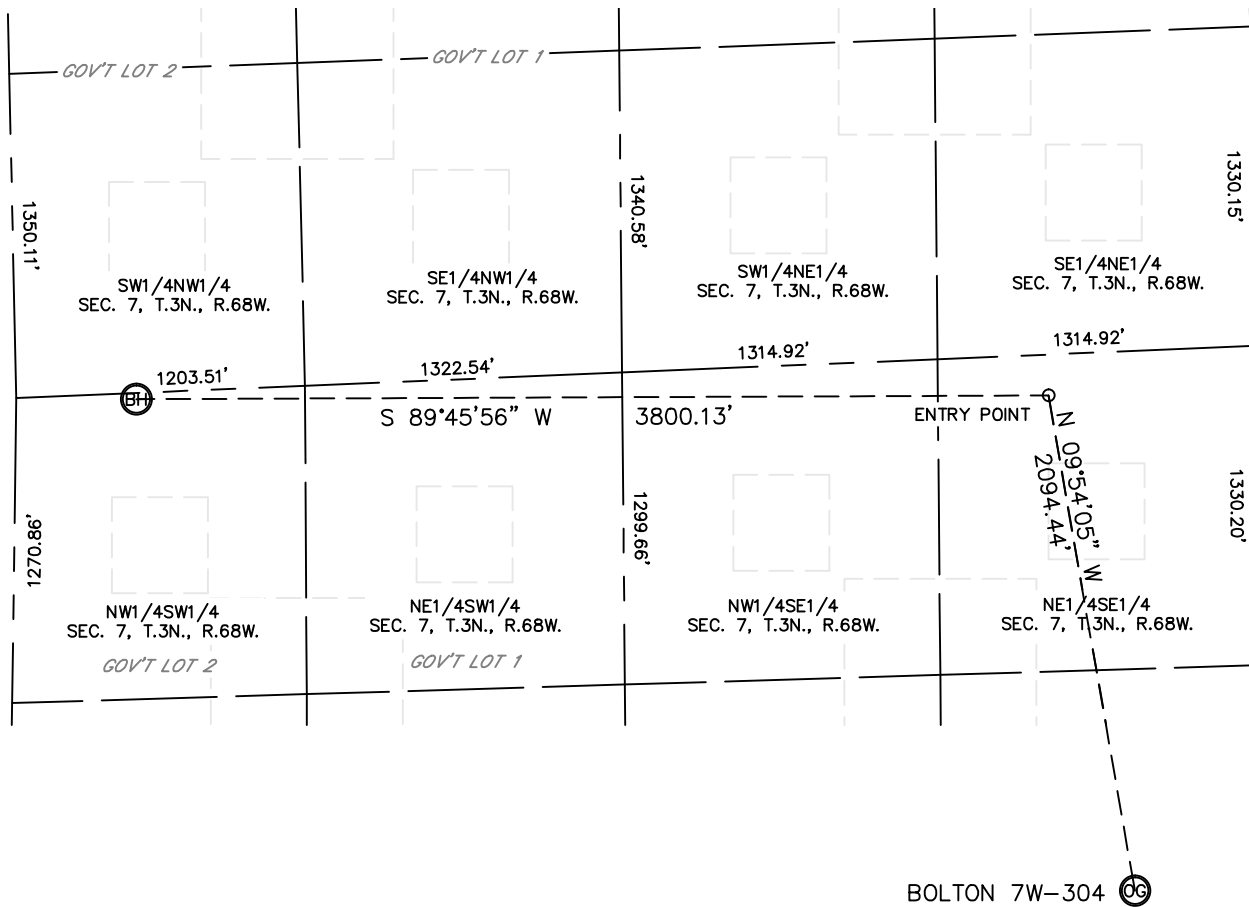


Lat40°, Inc. 1635 Foxtrail Drive, Suite 325 Loveland, CO 970-776-3321

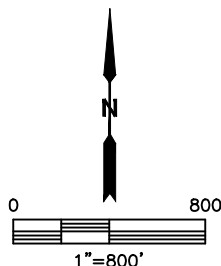
SITE SKETCH

BOLTON 7W-304

SECTION: 7
TOWNSHIP: 3N
RANGE: 68W



NOTE: NO EXISTING WELLS ADJACENT TO PROPOSED WELL BORE.



DATE: 1/20/2015
PROJECT#: 2014102