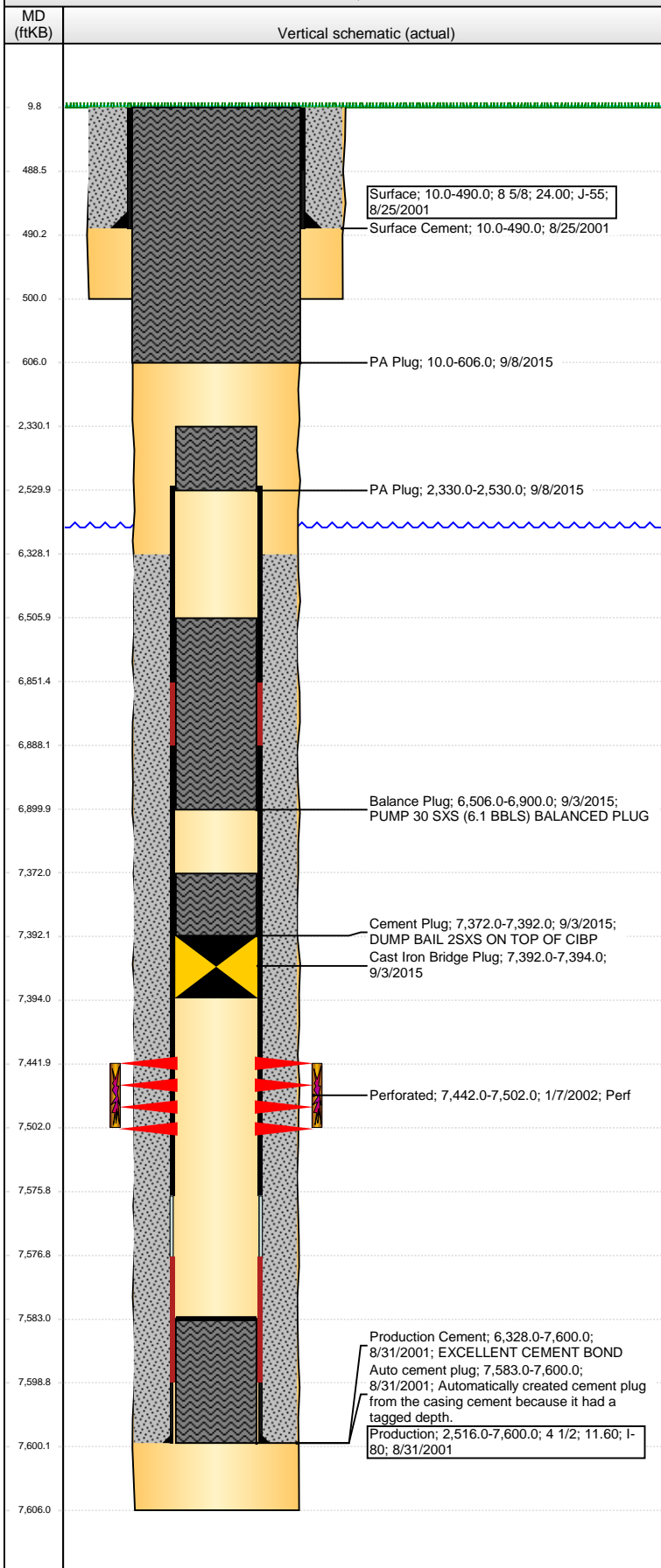


Well Name: NIKOLORIC C05-05

VERTICAL - ORIGINAL HOLE, 9/29/2015 10:53:56 AM



Well Header

API 05-123-20235	Business Unit DJ BASIN	District 15	Well Config VERTICAL
Original KB Elevation (ft) 4,763.00	KB - GL / MSL (ftKB) 10.00	Spud Date 8/25/2001	P & A Date 9/3/2015

Comment

PUMPING UNIT REMOVED 7/03.

Directions To Well

WCR 50 & WCR 51, SOUTH 1/2 MILE, EAST INTO

Congressional Location

Quarter 1	Quarter 2	Quarter 3	Quarter 4	Section	Township	Twnshp N...	Range	Rng E/W Dir
		SW	NW	5	4	N	64	W

Bottom Hole Location

North-South Distance (ft)	From N or S Line	East-West Distance (ft)	From E or W Line

Plug Back Total Depths

Date	Depth (ftKB)	Method	Com
8/21/2002	7,497.0	TAG	CO TO 7575
2/5/2003	7,480.0	TAG	
7/28/2003	7,583.0	TAG	

Wellbore Sections

Section Des	Size (in)	Act Top, MD (ftKB)	Act Btm, MD (ftKB)
SURFACE	12 1/4	10.0	500.0
PRODUCTION	7 7/8	500.0	7,606.0

Zone Statuses

Zone Name	Status Date	Status	Fluid Type	Job	Prod Method
J SAND	1/14/2002	PR	Gas	DRILLING/CO...	
J SAND	9/3/2015	AB	Gas	ABANDON WE...	

Casing Strings

Surface, 490.0ftKB

Casing Description	Run Date	OD (in)	Wt/Len (l...	Grade	Top, MD (ft...	MD (ftKB)
Surface	8/25/2001	8 5/8	24.00	J-55	10.0	490.0

Production, 7,600.0ftKB

Casing Description	Run Date	OD (in)	Wt/Len (l...	Grade	Top, MD (ft...	MD (ftKB)
Production	8/31/2001	4 1/2	11.60	I-80	10.0	7,600.0

Cement

Description	Top Depth (ftKB)	Bottom Depth (ftKB)
Surface Cement	10.0	490.0
Production Cement	6,328.0	7,600.0
Cement Plug	7,372.0	7,392.0
Balance Plug	6,506.0	6,900.0
PA Plug	2,330.0	2,530.0
PA Plug	10.0	606.0

Tubing Strings

Tubing Description	Run Date	String...	ID (in)	Wt (lb/ft)	Grade	Len (ft)	Set De...
Tubing - Production	7/29/2003	2 3/8	1.995	4.70	J-55	7,424.99	

Perforation Data

Zone	Bnch/St g	Entered Shot Total	Top (ftKB)	Btm (ftKB)	Date
J SAND, ORIGINAL HOLE		90	7,442.00	7,502.00	1/7/2002

Stimulations & Treatments

Date	Zone	Primary Job Type
1/8/2002	J SAND, ORIGINAL HOLE	DRILLING/COMPLETION - ORIGINAL
Technical Result	Tech Result Details	Tech Result Note

Comment

Other In Hole

Run Date	Des	OD (in)	Top (ftKB)	Btm (ftKB)
9/3/2015	Cast Iron Bridge Plug	3.99	7,392.0	7,394.0

Logs

Date	Type	Top, MD (ftKB)	Btm, MD (ftKB)
8/31/2001	CBL/CCL/GR	6,193.0	7,568.0
8/31/2001	COMPENSATED DENSITY	4,300.0	7,588.0

Well Name: NIKOLORIC C05-05

VERTICAL - ORIGINAL HOLE, 9/29/2015 10:53:59 AM

Logs

