



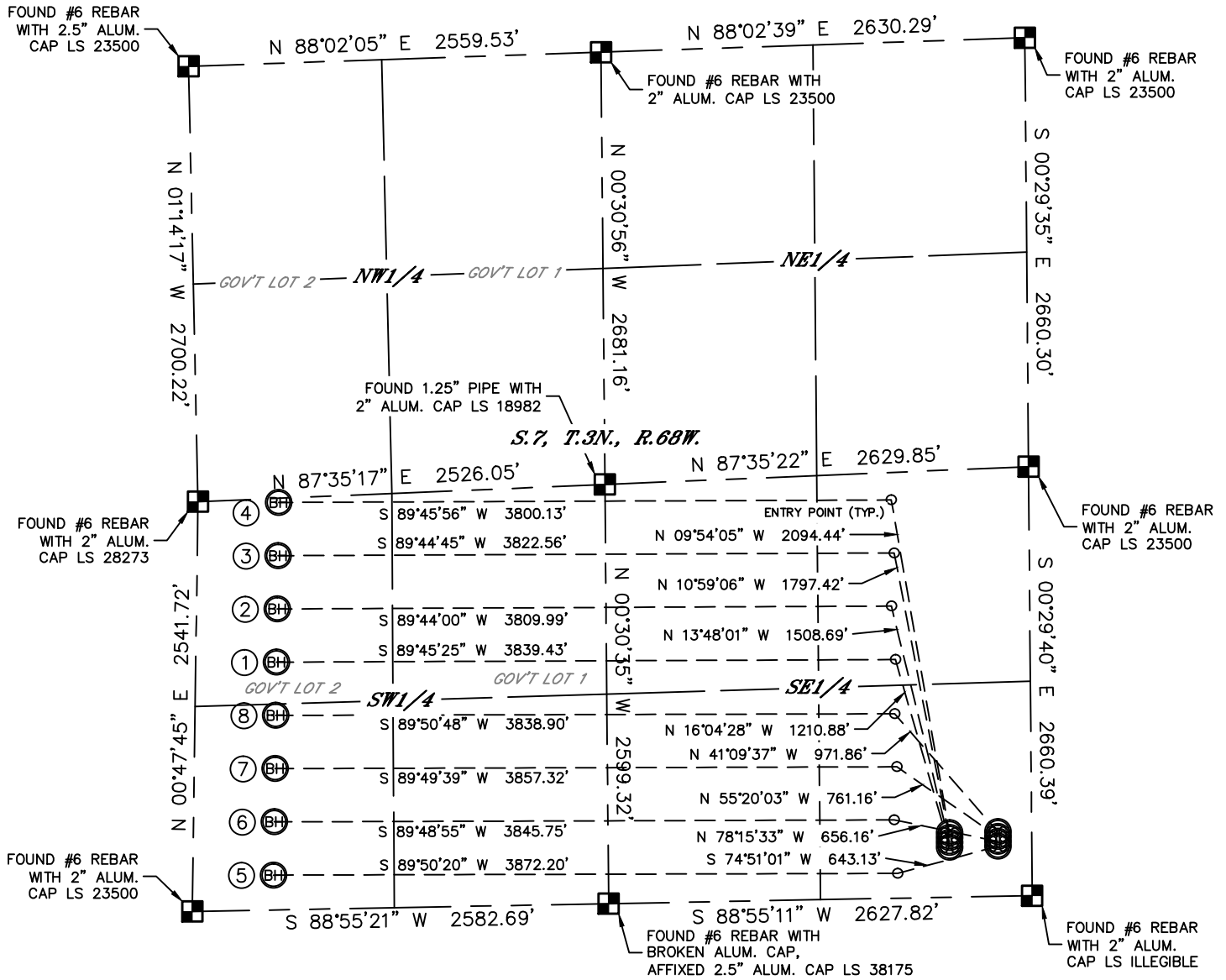
Lat40°, Inc. 1635 Foxtrail Drive, Suite 325 Loveland, CO 970-776-3321

MULTI-WELL PLAN

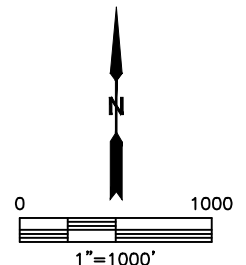
BOLTON 3N68W7TY PAD

THIS MAP DOES NOT REPRESENT A BOUNDARY SURVEY

SECTION: 7
TOWNSHIP: 3N
RANGE: 68W



| # | WELL NAME | BHL FOOTAGE | | | BHL LAT ° | BHL LONG ° | 1/4/1/4 |
|---|---------------|-------------|-----|---------|-----------|------------|---------|
| 1 | BOLTON 7X-404 | 1536 | FSL | 500 FWL | 40.23701 | -105.05320 | NWSW |
| 2 | BOLTON 7X-214 | 1866 | FSL | 500 FWL | 40.23792 | -105.05317 | NWSW |
| 3 | BOLTON 7W-434 | 2196 | FSL | 500 FWL | 40.23883 | -105.05315 | NWSW |
| 4 | BOLTON 7W-304 | 2526 | FSL | 500 FWL | 40.23973 | -105.05313 | NWSW |
| 5 | BOLTON 7Y-404 | 216 | FSL | 500 FWL | 40.23339 | -105.05329 | SWSW |
| 6 | BOLTON 7Y-214 | 546 | FSL | 500 FWL | 40.23430 | -105.05326 | SWSW |
| 7 | BOLTON 7X-434 | 876 | FSL | 500 FWL | 40.23520 | -105.05324 | SWSW |
| 8 | BOLTON 7X-304 | 1206 | FSL | 500 FWL | 40.23611 | -105.05322 | SWSW |



SHEET 1 OF 2

DATE: 1/20/2015
PROJECT#: 2014102



MULTI-WELL PLAN
BOLTON 3N68W7TY PAD

SECTION: 7
TOWNSHIP: 3N
RANGE: 68W

